



Where energy meets innovation.

Actual Wellpath Report

Big 464 516785 AWP Proj: 16223'

Page 1 of 9



REFERENCE WELLPATH IDENTIFICATION

Operator	EQT	Slot	Slot 516785
Area	Wetzel County, WV	Well	Big 464 516785
Field	Wetzel	Wellbore	Big 464 516785 AWB
Facility	Big 464 Pad		

REPORT SETUP INFORMATION

Projection System	NAD27 / Lambert West Virginia SP, Northern Zone (4701), US feet	Software System	WellArchitect® 5.1
North Reference	Grid	User	Jacostec
Scale	0.999941	Report Generated	7/24/2018 at 10:28:42 AM
Convergence at slot	0.65° West	Database/Source file	WA_MPL_EASTERNUS_Defn/Big_464_516785_AWP_Proj_16223_.xml

WELLPATH LOCATION

	Local coordinates		Grid coordinates		Geographic coordinates	
	North[ft]	East[ft]	Easting[US ft]	Northing[US ft]	Latitude	Longitude
Slot Location	-11.69	7.70	1713406.24	390410.47	39°34'02.829"N	80°30'59.844"W
Facility Reference Pt			1713398.54	390422.16	39°34'02.944"N	80°30'59.944"W
Field Reference Pt			1688243.35	385255.46	39°33'08.944"N	80°36'20.337"W

WELLPATH DATUM

Calculation method	Minimum curvature	Precision 539 (RKB) to Facility Vertical Datum	1265.00ft
Horizontal Reference Pt	Slot	Precision 539 (RKB) to Mean Sea Level	1265.00ft
Vertical Reference Pt	Precision 539 (RKB)	Precision 539 (RKB) to Mud Line at Slot (Slot 516785)	18.00ft
MD Reference Pt	Precision 539 (RKB)	Section Origin	N 0.00, E 0.00 ft
Field Vertical Reference	Mean Sea Level	Section Azimuth	146.75°

RECEIVED
Office of Oil and Gas
NOV 28 2018
WV Department of
Environmental Protection



Where energy meets innovation.

Actual Wellpath Report

Big 464 516785 AWP Proj: 16223'

Page 2 of 9

05/03/2019



REFERENCE WELLPATH IDENTIFICATION			
Operator	EQT	Slot	Slot 516785
Area	Wetzel County, WV	Well	Big 464 516785
Field	Wetzel	Wellbore	Big 464 516785 AWB
Facility	Big 464 Pad		

WELLPATH DATA (198 stations) † = interpolated/extrapolated station										
MD [ft]	Inclination [°]	Azimuth [°]	TVD [ft]	TVDSS [ft]	Vert Sect [ft]	North [ft]	East [ft]	DLS ["/100ft]	Build Rate ["/100ft]	Turn Rate ["/100ft]
0.00†	0.000	223.100	0.00	-1265.00	0.00	0.00	0.00	0.00	0.00	0.00
18.00	0.000	223.100	18.00	-1247.00	0.00	0.00	0.00	0.00	0.00	0.00
105.00	0.240	223.100	105.00	-1160.00	0.04	-0.13	-0.12	0.28	0.28	-157.36
205.00	0.280	218.390	205.00	-1060.00	0.17	-0.48	-0.42	0.05	0.04	-4.71
305.00	0.170	204.440	305.00	-960.00	0.33	-0.80	-0.63	0.12	-0.11	-13.95
405.00	0.110	139.560	405.00	-860.00	0.50	-1.01	-0.63	0.16	-0.06	-64.88
505.00	0.150	112.670	505.00	-760.00	0.70	-1.14	-0.45	0.07	0.04	-26.89
605.00	0.120	108.910	605.00	-660.00	0.89	-1.22	-0.23	0.03	-0.03	-3.76
705.00	0.120	109.010	705.00	-560.00	1.06	-1.29	-0.03	0.00	0.00	0.10
805.00	0.150	102.480	805.00	-460.00	1.24	-1.35	0.20	0.03	0.03	-6.53
905.00	0.130	113.880	905.00	-360.00	1.43	-1.42	0.43	0.03	-0.02	11.40
1005.00	0.150	61.970	1005.00	-260.00	1.53	-1.41	0.65	0.12	0.02	-51.91
1105.00	0.260	71.950	1105.00	-160.00	1.60	-1.28	0.98	0.12	0.11	9.98
1205.00	0.290	69.610	1204.99	-60.01	1.72	-1.12	1.43	0.03	0.03	-2.34
1305.00	0.390	69.910	1304.99	39.99	1.85	-0.91	1.99	0.10	0.10	0.30
1405.00	0.470	83.350	1404.99	139.99	2.12	-0.75	2.72	0.13	0.08	13.44
1505.00	0.490	94.760	1504.99	239.99	2.56	-0.74	3.55	0.10	0.02	11.41
1605.00	0.600	106.910	1604.98	339.98	3.23	-0.93	4.48	0.16	0.11	12.15
1705.00	0.780	116.890	1704.97	439.97	4.22	-1.39	5.58	0.22	0.18	9.98
1805.00	0.840	118.310	1804.96	539.96	5.45	-2.04	6.84	0.06	0.06	1.42
1905.00	0.870	115.710	1904.95	639.95	6.75	-2.72	8.17	0.05	0.03	-2.60
2005.00	0.830	117.430	2004.94	739.94	8.03	-3.38	9.49	0.05	-0.04	1.72
2105.00	0.790	117.870	2104.93	839.93	9.27	-4.04	10.74	0.04	-0.04	0.44
2205.00	0.680	115.540	2204.92	939.92	10.38	-4.61	11.89	0.11	-0.11	-2.33
2305.00	0.660	117.600	2304.92	1039.92	11.39	-5.14	12.94	0.03	-0.02	2.06
2405.00	0.600	124.550	2404.91	1139.91	12.38	-5.70	13.88	0.10	-0.06	6.95
2505.00	0.400	122.130	2504.91	1239.91	13.18	-6.18	14.60	0.20	-0.20	-2.42
2605.00	0.280	115.670	2604.91	1339.91	13.71	-6.48	15.12	0.13	-0.12	-6.46
2705.00	0.260	120.980	2704.90	1439.90	14.12	-6.70	15.53	0.03	-0.02	5.31
2805.00	0.240	109.770	2804.90	1539.90	14.49	-6.89	15.93	0.05	-0.02	-11.21

RECEIVED
Office of Oil and Gas
NOV 28 2018
WV Department of
Environmental Protection



Actual Wellpath Report

Big 464 516785 AWP Proj: 16223'

Page 3 of 9

05/03/2019



Where energy meets innovation.

REFERENCE WELLPATH IDENTIFICATION			
Operator	EQT	Slot	Slot 516785
Area	Wetzel County, WV	Well	Big 464 516785
Field	Wetzel	Wellbore	Big 464 516785 AWB
Facility	Big 464 Pad		

WELLPATH DATA (198 stations)										
MD [ft]	Inclination [°]	Azimuth [°]	TVD [ft]	TVSS [ft]	Vert Sect [ft]	North [ft]	East [ft]	DLS [°/100ft]	Build Rate [°/100ft]	Turn Rate [°/100ft]
2905.00	0.270	97.130	2904.90	1639.90	14.81	-8.99	16.36	0.06	0.03	-12.64
3005.00	0.430	89.580	3004.90	1739.90	15.17	-7.01	16.97	0.17	0.16	-7.55
3105.00	0.420	86.700	3104.90	1839.90	15.55	-6.99	17.71	0.02	-0.01	-2.88
3205.00	0.250	77.050	3204.90	1939.90	15.81	-6.92	18.29	0.18	-0.17	-9.65
3305.00	0.230	97.110	3304.90	2039.90	16.02	-6.89	18.70	0.09	-0.02	-20.06
3405.00	0.310	120.170	3404.89	2139.89	16.39	-7.06	19.13	0.13	0.08	23.06
3505.00	0.290	119.140	3504.89	2239.89	16.86	-7.31	19.59	0.02	-0.02	-1.03
3605.00	0.230	106.780	3604.89	2339.89	17.23	-7.50	20.00	0.08	-0.06	-12.36
3705.00	0.300	101.270	3704.89	2439.89	17.57	-7.60	20.45	0.07	0.07	-5.51
3805.00	0.120	117.230	3804.89	2539.89	17.85	-7.70	20.80	0.19	-0.18	15.96
3905.00	0.110	109.290	3904.89	2639.89	18.01	-7.78	20.98	0.02	-0.01	-7.94
4005.00	0.130	86.850	4004.89	2739.89	18.11	-7.77	21.18	0.09	0.02	-42.44
4105.00	0.140	47.830	4104.89	2839.89	18.11	-7.64	21.37	0.05	0.01	-19.02
4205.00	0.240	74.270	4204.89	2939.89	18.15	-7.50	21.66	0.13	0.10	26.44
4305.00	0.310	58.900	4304.89	3039.89	18.23	-7.31	22.10	0.10	0.07	-15.37
4348.00	0.470	60.310	4347.89	3082.89	18.24	-7.16	22.35	0.37	0.37	3.28
4399.00	0.550	48.020	4398.88	3133.88	18.22	-6.89	22.71	0.26	0.16	-24.10
4443.00	1.100	91.240	4442.88	3177.88	18.43	-6.76	23.29	1.80	1.25	98.23
4487.00	5.080	113.470	4486.81	3221.81	20.29	-7.55	25.50	9.28	9.05	50.52
4531.00	8.860	108.630	4530.48	3265.48	24.59	-9.41	30.50	8.69	8.59	-11.00
4576.00	12.570	106.730	4574.68	3309.68	31.07	-11.92	38.48	8.28	8.24	-4.22
4619.00	15.610	108.150	4616.39	3351.39	39.18	-15.07	48.46	7.11	7.07	3.30
4663.00	18.600	111.700	4658.44	3393.44	49.55	-19.51	60.61	7.19	6.80	8.07
4707.00	21.440	111.850	4699.77	3434.77	61.89	-25.10	74.59	6.46	6.45	0.34
4751.00	23.300	111.620	4740.46	3475.46	75.60	-31.30	90.15	4.23	4.23	-0.52
4795.00	25.030	111.340	4780.60	3515.60	90.31	-37.90	108.91	3.94	3.93	-0.64
4839.00	27.600	110.340	4820.04	3555.04	106.10	-44.83	125.14	5.93	5.84	-2.27
4883.00	30.890	109.150	4858.43	3593.43	123.26	-52.08	145.37	7.59	7.48	-2.70
4926.00	33.900	107.220	4894.73	3629.73	141.26	-59.25	167.26	7.40	7.00	-4.49
4971.00	37.360	106.660	4931.30	3666.30	161.39	-66.88	192.33	7.72	7.69	-1.24

RECEIVED
Office of Oil and Gas
NOV 28 2018
WV Department of
Environmental Protection



Where energy meets innovation.

Actual Wellpath Report

Big 464 516785 AWP Proj: 16223'

Page 4 of 9

05/03/2019



REFERENCE WELLPATH IDENTIFICATION			
Operator	EQT	Slot	Slot 516785
Area	Wetzel County, WV	Well	Big 464 516785
Field	Wetzel	Wellbore	Big 464 516785 AWB
Facility	Big 464 Pad		

WELLPATH DATA (198 stations)										
MD [ft]	Inclination [°]	Azimuth [°]	TVD [ft]	TVDSS [ft]	Vert Sect [ft]	North [ft]	East [ft]	DLS [°/100ft]	Build Rate [°/100ft]	Turn Rate [°/100ft]
5015.00	40.470	110.210	4965.54	3700.54	183.08	-75.64	218.53	8.70	7.07	8.07
5059.00	41.050	111.630	4998.87	3733.87	206.37	-85.90	245.36	2.49	1.32	3.23
5103.00	41.660	112.160	5031.89	3766.89	230.23	-96.74	272.34	1.60	1.39	1.20
5190.00	41.350	108.830	5097.05	3832.05	276.71	-116.93	326.32	2.56	-0.36	-3.83
5278.00	41.310	107.970	5163.14	3898.14	322.28	-135.27	381.47	0.65	-0.05	-0.98
5366.00	42.640	108.430	5228.56	3963.56	368.31	-153.66	437.38	1.55	1.51	0.52
5455.00	41.970	110.710	5294.38	4029.38	416.03	-173.71	493.81	1.88	-0.75	2.56
5543.00	40.080	112.320	5360.77	4095.77	463.19	-194.88	547.55	2.46	-2.15	1.83
5630.00	44.700	113.510	5425.01	4160.01	511.91	-217.74	601.55	5.39	5.31	1.37
5719.00	41.750	109.890	5489.87	4224.87	561.82	-240.31	658.14	4.33	-3.31	-4.07
5806.00	42.590	108.600	5554.35	4289.35	608.15	-259.56	713.28	1.39	0.97	-1.48
5893.00	41.460	110.420	5618.98	4353.98	654.50	-279.00	768.17	1.91	-1.30	2.09
5980.00	39.510	110.210	5685.14	4420.14	699.95	-298.61	821.14	2.25	-2.24	-0.24
6068.00	39.990	108.640	5752.80	4487.80	744.69	-317.32	874.21	1.26	0.55	-1.78
6153.00	40.670	110.580	5817.60	4552.60	788.54	-335.78	926.02	1.68	0.80	2.28
6239.00	41.120	111.090	5882.61	4617.61	834.14	-355.81	978.64	0.65	0.52	0.59
6325.00	38.420	109.170	5948.71	4683.71	878.30	-374.76	1030.27	3.45	-3.14	-2.23
6370.00	37.120	107.570	5984.28	4719.28	899.91	-383.46	1056.43	3.62	-2.89	-3.56
6416.00	37.640	108.360	6020.83	4755.83	921.68	-392.07	1082.99	1.54	1.13	1.72
6505.00	39.310	109.960	6090.51	4825.51	965.56	-410.25	1135.29	2.18	1.88	1.80
6595.00	39.470	110.410	6160.06	4895.06	1011.43	-429.96	1188.89	0.36	0.18	0.50
6684.00	39.430	109.930	6228.79	4963.79	1056.84	-449.46	1241.97	0.35	-0.04	-0.54
6774.00	39.420	109.700	6298.31	5033.31	1102.53	-468.84	1295.75	0.16	-0.01	-0.26
6864.00	39.440	109.680	6367.83	5102.83	1148.15	-488.10	1349.57	0.03	0.02	-0.02
6953.00	39.530	110.180	6436.52	5171.52	1193.45	-507.39	1402.77	0.37	0.10	0.56
7043.00	39.490	112.340	6505.96	5240.96	1240.06	-528.15	1456.12	1.53	-0.04	2.40
7132.00	39.520	113.300	6574.63	5309.63	1287.04	-550.10	1508.31	0.69	0.03	1.08
7222.00	39.530	112.860	6644.05	5379.05	1334.71	-572.56	1561.00	0.31	0.01	-0.49
7312.00	39.510	110.510	6713.48	5448.48	1381.58	-593.72	1614.21	1.66	-0.02	-2.61
7401.00	39.600	110.060	6782.10	5517.10	1427.16	-613.37	1667.37	0.34	0.10	-0.51

RECEIVED
Office of Oil and Gas
NOV 28 2018
WV Department of
Environmental Protection



Where energy meets innovation.

Actual Wellpath Report

Big 464 516785 AWP Proj: 16223'

Page 5 of 9

05/03/2019



REFERENCE WELLPATH IDENTIFICATION			
Operator	EQT	Slot	Slot 516785
Area	Wetzel County, WV	Well	Big 464 516785
Field	Wetzel	Wellbore	Big 464 516785 AWB
Facility	Big 464 Pad		

WELLPATH DATA (198 stations)										
MD [ft]	Inclination [°]	Azimuth [°]	TVD [ft]	TVDSS [ft]	Vert Sect [ft]	North [ft]	East [ft]	DLS [°/100ft]	Build Rate [°/100ft]	Turn Rate [°/100ft]
7491.00	39.490	110.300	6851.50	5586.50	1473.18	-633.13	1721.16	0.21	-0.12	0.27
7580.00	39.560	110.040	6920.15	5655.15	1518.66	-652.66	1774.32	0.20	0.08	-0.29
7670.00	39.540	110.040	6989.54	5724.54	1564.60	-672.30	1828.16	0.02	-0.02	0.00
7759.00	39.530	111.230	7058.19	5793.19	1610.37	-692.27	1881.18	0.85	-0.01	1.34
7849.00	39.590	111.300	7127.57	5862.57	1657.04	-713.05	1934.59	0.08	0.07	0.08
7938.00	39.510	110.800	7196.20	5931.20	1703.06	-733.41	1987.48	0.37	-0.09	-0.56
7983.00	39.550	110.740	7230.91	5965.91	1726.24	-743.57	2014.26	0.12	0.09	-0.13
8028.00	40.590	115.070	7265.35	6000.35	1750.29	-754.85	2040.93	6.61	2.31	9.62
8073.00	43.240	120.640	7298.84	6033.84	1776.61	-768.91	2067.46	10.15	5.89	12.38
8117.00	46.950	125.650	7329.91	6064.91	1805.16	-785.97	2093.51	11.66	8.43	11.39
8162.00	50.830	130.120	7359.50	6094.50	1837.23	-806.81	2120.23	11.41	8.62	9.93
8207.00	56.270	133.540	7386.23	6121.23	1872.20	-830.96	2147.16	13.54	12.09	7.60
8251.00	61.220	136.060	7409.06	6144.06	1908.98	-857.47	2173.82	12.27	11.25	5.73
8296.00	65.060	137.750	7429.38	6164.38	1948.53	-886.79	2201.24	9.17	8.53	3.76
8341.00	69.260	139.570	7446.85	6181.85	1989.58	-917.92	2228.61	10.05	9.33	4.04
8386.00	72.550	141.680	7461.57	6196.57	2031.85	-950.79	2255.58	8.55	7.31	4.69
8431.00	76.290	143.550	7473.65	6208.65	2075.08	-985.23	2281.89	9.22	8.31	4.16
8476.00	77.110	144.570	7484.01	6219.01	2118.82	-1020.69	2307.59	2.86	1.82	2.27
8520.00	78.970	145.930	7493.12	6228.12	2161.85	-1056.05	2332.12	5.20	4.23	3.09
8565.00	81.000	147.550	7500.95	6235.95	2206.16	-1093.11	2356.42	5.74	4.51	3.60
8610.00	82.440	149.860	7507.43	6242.43	2250.66	-1131.15	2379.55	6.00	3.20	5.13
8655.00	85.250	153.250	7512.26	6247.26	2295.23	-1170.49	2400.85	9.75	6.24	7.53
8744.00	85.650	160.430	7519.33	6254.33	2382.52	-1252.00	2435.72	8.05	0.45	8.07
8834.00	85.380	162.010	7526.37	6261.37	2469.40	-1336.95	2464.60	1.78	-0.30	1.76
8924.00	85.780	158.030	7533.30	6268.30	2556.71	-1421.26	2495.26	4.43	0.44	-4.42
9014.00	85.750	158.640	7539.95	6274.95	2644.64	-1504.67	2528.40	0.68	-0.03	0.68
9103.00	85.690	158.310	7546.59	6281.59	2731.54	-1587.24	2560.96	0.38	-0.07	-0.37
9193.00	85.840	158.670	7553.24	6288.24	2819.42	-1670.74	2593.87	0.43	0.17	0.40
9282.00	85.780	159.190	7559.74	6294.74	2906.18	-1753.57	2625.78	0.59	-0.07	0.58
9372.00	85.810	159.080	7566.34	6301.34	2993.85	-1837.44	2657.75	0.13	0.03	-0.12

RECEIVED
Office of Oil and Gas
NOV 28 2018
WV Department of
Environmental Protection



Where energy meets innovation.

Actual Wellpath Report

Big 464 516785 AWP Proj: 16223'

Page 6 of 9

05/03/2019



REFERENCE WELLPATH IDENTIFICATION			
Operator	EQT	Slot	Slot 516785
Area	Wetzel County, WV	Well	Big 464 516785
Field	Wetzel	Wellbore	Big 464 516785 AWB
Facility	Big 464 Pad		

WELLPATH DATA (198 stations)										
MD [ft]	Inclination [°]	Azimuth [°]	TVD [ft]	TVDSS [ft]	Vert Sect [ft]	North [ft]	East [ft]	DLS [°/100ft]	Build Rate [°/100ft]	Turn Rate [°/100ft]
9462.00	85.780	159.100	7572.94	6307.94	3081.53	-1921.28	2689.78	0.04	-0.03	0.02
9551.00	85.720	157.620	7579.54	6314.54	3168.47	-2003.78	2722.51	1.66	-0.07	-1.66
9641.00	85.970	158.030	7586.06	6321.06	3256.56	-2086.91	2756.39	0.53	0.28	0.46
9731.00	86.270	159.470	7592.15	6327.15	3344.39	-2170.59	2788.94	1.63	0.33	1.60
9820.00	86.920	159.500	7597.43	6332.43	3431.05	-2253.80	2820.07	0.73	0.73	0.03
9910.00	86.800	154.610	7602.37	6337.37	3519.44	-2336.53	2855.09	5.43	-0.13	-5.43
10000.00	86.680	151.060	7607.49	6342.49	3608.77	-2416.46	2896.11	3.94	-0.13	-3.94
10089.00	86.520	151.540	7612.76	6347.76	3697.33	-2494.39	2938.77	0.57	-0.18	0.54
10179.00	86.670	153.070	7618.11	6353.11	3786.75	-2573.93	2980.53	1.71	0.17	1.70
10269.00	86.830	154.380	7623.21	6358.21	3875.94	-2654.50	3020.30	1.46	0.18	1.46
10358.00	87.040	157.410	7627.97	6362.97	3963.67	-2735.62	3056.60	3.41	0.24	3.40
10448.00	88.060	158.420	7631.82	6366.82	4051.88	-2818.93	3090.40	1.59	1.13	1.12
10537.00	88.000	157.090	7634.88	6369.88	4139.19	-2901.26	3124.07	1.50	-0.07	-1.49
10627.00	88.430	154.720	7637.68	6372.68	4228.00	-2983.37	3160.80	2.68	0.48	-2.63
10717.00	88.280	152.770	7640.27	6375.27	4317.29	-3064.05	3200.59	2.17	-0.17	-2.17
10806.00	88.340	154.300	7642.89	6377.89	4405.62	-3143.69	3240.24	1.72	0.07	1.72
10896.00	88.400	153.660	7645.45	6380.45	4494.87	-3224.53	3279.70	0.71	0.07	-0.71
10986.00	88.430	155.660	7647.94	6382.94	4583.97	-3305.84	3318.20	2.22	0.03	2.22
11075.00	89.540	158.540	7649.52	6384.52	4671.50	-3387.80	3352.83	3.47	1.25	3.24
11165.00	89.350	162.600	7650.39	6385.39	4758.87	-3472.65	3382.76	4.52	-0.21	4.51
11254.00	89.320	162.710	7651.42	6386.42	4844.46	-3557.60	3409.29	0.13	-0.03	0.12
11344.00	89.280	159.030	7652.54	6387.54	4931.72	-3642.61	3438.77	4.09	-0.07	-4.09
11434.00	89.660	157.140	7653.39	6388.39	5019.96	-3726.10	3472.36	2.15	0.44	-2.10
11523.00	89.690	156.270	7653.89	6388.89	5107.61	-3807.84	3507.56	0.98	0.03	-0.98
11613.00	89.720	154.760	7654.36	6389.36	5196.56	-3889.74	3544.86	1.68	0.03	-1.68
11703.00	90.400	157.370	7654.26	6389.26	5285.36	-3972.00	3581.37	3.00	0.76	2.90
11792.00	91.450	160.540	7652.82	6387.82	5372.33	-4055.04	3613.32	3.75	1.18	3.56
11882.00	92.770	161.490	7649.51	6384.51	5459.49	-4140.08	3642.58	1.81	1.47	1.06
11971.00	93.450	160.560	7644.68	6379.68	5545.62	-4224.12	3671.47	1.29	0.76	-1.04
12061.00	94.130	156.810	7638.73	6373.73	5633.46	-4307.76	3704.11	4.23	0.76	-4.17

RECEIVED
Office of Oil and Gas
NOV 28 2018
WV Department of
Environmental Protection



Where energy meets innovation.

Actual Wellpath Report

Big 464 516785 AWP Proj: 16223'

Page 7 of 9

05/03/2019



REFERENCE WELLPATH IDENTIFICATION			
Operator	EQT	Slot	Slot 516785
Area	Wetzel County, WV	Well	Big 464 516785
Field	Wetzel	Wellbore	Big 464 516785 AWB
Facility	Big 464 Pad		

WELLPATH DATA (198 stations)										
MD [ft]	Inclination [°]	Azimuth [°]	TVD [ft]	TVDSS [ft]	Vert Sect [ft]	North [ft]	East [ft]	DLS [°/100ft]	Build Rate [°/100ft]	Turn Rate [°/100ft]
12151.00	93.910	153.860	7632.42	6367.42	5722.22	-4389.34	3741.57	3.28	-0.24	-3.28
12240.00	93.940	153.920	7626.33	6361.33	5810.33	-4469.07	3780.65	0.08	0.03	0.07
12330.00	93.910	154.940	7620.17	6355.17	5899.31	-4550.07	3819.40	1.13	-0.03	1.13
12419.00	94.010	155.350	7614.02	6349.02	5987.14	-4630.63	3856.72	0.47	0.11	0.46
12509.00	95.430	155.750	7606.62	6341.62	6075.78	-4712.28	3893.84	1.64	1.58	0.44
12599.00	97.030	156.150	7596.85	6331.85	6164.10	-4793.98	3930.30	1.83	1.78	0.44
12688.00	97.870	156.680	7585.31	6320.31	6251.09	-4874.85	3965.61	1.11	0.94	0.60
12778.00	97.870	158.410	7572.98	6307.98	6338.66	-4957.24	3999.66	1.90	0.00	1.92
12867.00	97.970	158.660	7560.72	6295.72	6424.95	-5039.28	4031.92	0.30	0.11	0.28
12957.00	97.220	157.990	7548.83	6283.83	6512.35	-5122.18	4064.87	1.11	-0.83	-0.74
13047.00	97.350	156.510	7537.41	6272.41	6600.13	-5204.51	4099.39	1.64	0.14	-1.64
13136.00	94.620	156.120	7528.13	6263.13	6687.40	-5285.56	4134.95	3.10	-3.07	-0.44
13226.00	94.400	155.580	7521.06	6256.06	6775.99	-5367.43	4171.65	0.65	-0.24	-0.60
13316.00	92.520	156.450	7515.63	6250.63	6864.65	-5449.50	4208.17	2.30	-2.09	0.97
13405.00	92.400	156.660	7511.81	6248.81	6952.27	-5531.08	4243.55	0.27	-0.13	0.24
13495.00	90.920	158.270	7509.20	6244.20	7040.66	-5614.17	4278.02	2.43	-1.64	1.79
13584.00	89.880	158.190	7508.58	6243.58	7127.88	-5696.81	4311.03	1.17	-1.17	-0.09
13674.00	89.850	157.070	7508.79	6243.79	7216.26	-5780.04	4345.28	1.24	-0.03	-1.24
13764.00	89.480	155.860	7509.32	6244.32	7304.96	-5862.55	4381.22	1.41	-0.41	-1.34
13853.00	89.380	156.020	7510.20	6245.20	7392.82	-5943.81	4417.50	0.21	-0.11	0.18
13943.00	89.940	158.470	7510.73	6245.73	7481.30	-6026.80	4452.31	2.79	0.62	2.72
14032.00	89.540	155.830	7511.14	6246.14	7568.83	-6108.81	4486.87	3.00	-0.45	-2.97
14122.00	89.260	155.720	7512.08	6247.08	7657.71	-6190.88	4523.79	0.33	-0.31	-0.12
14211.00	89.480	156.380	7513.06	6248.06	7745.54	-6272.21	4559.92	0.78	0.25	0.74
14301.00	89.420	164.310	7513.92	6248.92	7832.94	-6356.90	4590.17	8.81	-0.07	8.81
14391.00	90.180	159.110	7514.24	6249.24	7919.86	-6442.32	4618.40	5.84	0.84	-5.78
14480.00	90.150	154.890	7513.98	6248.98	8007.42	-6524.22	4653.17	4.74	-0.03	-4.74
14570.00	89.850	157.140	7513.98	6248.98	8096.24	-6606.45	4689.75	2.52	-0.33	2.50
14660.00	91.230	156.140	7513.13	6248.13	8184.89	-6689.06	4725.43	1.89	1.53	-1.11
14749.00	90.860	155.600	7511.61	6246.61	8272.75	-6770.27	4761.81	0.74	-0.42	-0.61

RECEIVED
Office of Oil and Gas
NOV 28 2018
WV Department of
Environmental Protection



Where energy meets innovation.

Actual Wellpath Report

Big 464 516785 AWP Proj: 16223'

Page 8 of 9

05/03/2019



REFERENCE WELLPATH IDENTIFICATION			
Operator	EQT	Slot	Slot 516785
Area	Wetzel County, WV	Well	Big 464 516785
Field	Wetzel	Wellbore	Big 464 516785 AWB
Facility	Big 464 Pad		

WELLPATH DATA (198 stations)										
MD [ft]	Inclination [°]	Azimuth [°]	TVD [ft]	TVDSS [ft]	Vert Sect [ft]	North [ft]	East [ft]	DLS [°/100ft]	Build Rate [°/100ft]	Turn Rate [°/100ft]
14839.00	90.710	155.710	7510.28	6245.28	8361.66	-6852.26	4798.91	0.21	-0.17	0.12
14928.00	89.450	156.420	7510.15	6245.15	8449.48	-6933.61	4835.01	1.63	-1.42	0.80
15018.00	89.420	156.460	7511.04	6246.04	8538.20	-7016.10	4870.99	0.06	-0.03	0.04
15107.00	88.550	156.940	7512.62	6247.62	8625.84	-7097.83	4906.18	1.12	-0.98	0.54
15197.00	88.430	155.610	7514.99	6249.99	8714.57	-7180.19	4942.38	1.48	-0.13	-1.48
15287.00	87.940	156.180	7517.84	6252.84	8803.38	-7262.30	4979.12	0.83	-0.54	0.63
15376.00	87.660	158.350	7521.26	6256.26	8890.82	-7344.32	5013.49	2.46	-0.31	2.44
15466.00	87.230	160.750	7525.27	6260.27	8978.48	-7428.56	5044.90	2.71	-0.48	2.67
15555.00	87.450	159.340	7529.40	6264.40	9065.00	-7512.12	5075.24	1.60	0.25	-1.58
15645.00	87.440	159.630	7533.41	6268.41	9152.70	-7596.33	5106.75	0.32	-0.01	0.32
15735.00	87.480	158.870	7537.40	6272.40	9240.48	-7680.41	5138.60	0.84	0.04	-0.84
15824.00	87.880	160.620	7541.00	6276.00	9327.13	-7763.83	5169.39	2.02	0.45	1.97
15914.00	87.750	159.510	7544.44	6279.44	9414.64	-7848.38	5200.05	1.24	-0.14	-1.23
16003.00	87.880	160.890	7547.83	6282.83	9501.14	-7932.05	5230.18	1.56	0.15	1.55
16093.00	88.310	158.210	7550.82	6285.82	9588.84	-8016.33	5261.60	3.01	0.48	-2.98
16183.00	88.460	156.030	7553.36	6288.36	9677.33	-8099.21	5296.58	2.43	0.17	-2.42
16198.00	88.340	156.380	7553.78	6288.78	9692.12	-8112.93	5302.63	2.47	-0.80	2.33
16223.00	88.340	156.380	7554.50	6289.50	9716.76	-8135.82	5312.64	0.00	0.00	0.00

RECEIVED
Office of Oil and Gas
NOV 28 2018
WV Department of
Environmental Protection



Where energy meets innovation.

Actual Wellpath Report

Big 464 516785 AWP Proj: 16223'

Page 9 of 9

05/03/2019



REFERENCE WELLPATH IDENTIFICATION			
Operator	EQT	Slot	Slot 516785
Area	Wetzel County, WV	Well	Big 464 516785
Field	Wetzel	Wellbore	Big 464 516785 AWB
Facility	Big 464 Pad		

HOLE & CASING SECTIONS - Ref Wellbore: Big 464 516785 AWB Ref Wellpath: Big 464 516785 AWP Proj: 16223'									
String/Diameter	Start MD [ft]	End MD [ft]	Interval [ft]	Start TVD [ft]	End TVD [ft]	Start N/S [ft]	Start E/W [ft]	End N/S [ft]	End E/W [ft]
17.5in Open Hole	18.00	1025.00	1007.00	18.00	1025.00	0.00	0.00	-1.38	0.70
13.375in Casing Surface	18.00	1025.00	1007.00	18.00	1025.00	0.00	0.00	-1.38	0.70
12.25in Open Hole	1025.00	2847.00	1822.00	1025.00	2846.90	-1.38	0.70	-6.94	16.10
9.625in Casing Intermediate	18.00	2847.00	2829.00	18.00	2846.90	0.00	0.00	-6.94	16.10
8.75in Open Hole	2847.00	6444.00	3597.00	2846.90	6042.93	-6.94	16.10	-397.56	1099.29
8.5in Open Hole	6444.00	16223.00	9779.00	6042.93	7554.50	-397.56	1099.29	-8135.82	5312.64
5.5in Casing Production	18.00	16223.00	16205.00	18.00	7554.50	0.00	0.00	-8135.82	5312.64

TARGETS								
Name	TVD [ft]	North [ft]	East [ft]	Grid East [US ft]	Grid North [US ft]	Latitude	Longitude	Shape
Big 464 516785 BHL Rev-2	7504.57	-8129.09	5330.64	1718736.55	382281.88	39°32'43.083"N	80°29'50.629"W	point
Big 464 516785 LP Rev-2	7518.00	-1124.95	2357.55	1715763.65	389285.59	39°33'51.974"N	80°30'29.581"W	point
Big 464 HL	7800.00	-17.40	-13.69	1713392.55	390393.07	39°34'02.656"N	80°31'00.017"W	polygon

WELLPATH COMPOSITION - Ref Wellbore: Big 464 516785 AWB Ref Wellpath: Big 464 516785 AWP Proj: 16223'					
Start MD [ft]	End MD [ft]	Positional Uncertainty Model	Log Name/Comment	Wellbore	
18.00	4348.00	Gyrodata standard - Drop gyro or Multi-shot	01 Gyrodata MS Gyro <12-1/4">(105'-4348')	Big 464 516785 AWB	
4348.00	6370.00	OWSG MWD rev2 - Standard	02 SDI MWD <8-3/4">(4348')(4399'-6370')	Big 464 516785 AWB	
6370.00	16198.00	OWSG MWD rev2 + IFR1 + Multi-Station Correction	03 BH AT Curve + MagVar MSA <8-1/2">(6370')(6416'-16198')	Big 464 516785 AWB	
16198.00	16223.00	Blind Drilling (std)	Projection to bit	Big 464 516785 AWB	

RECEIVED
Office of Oil and Gas

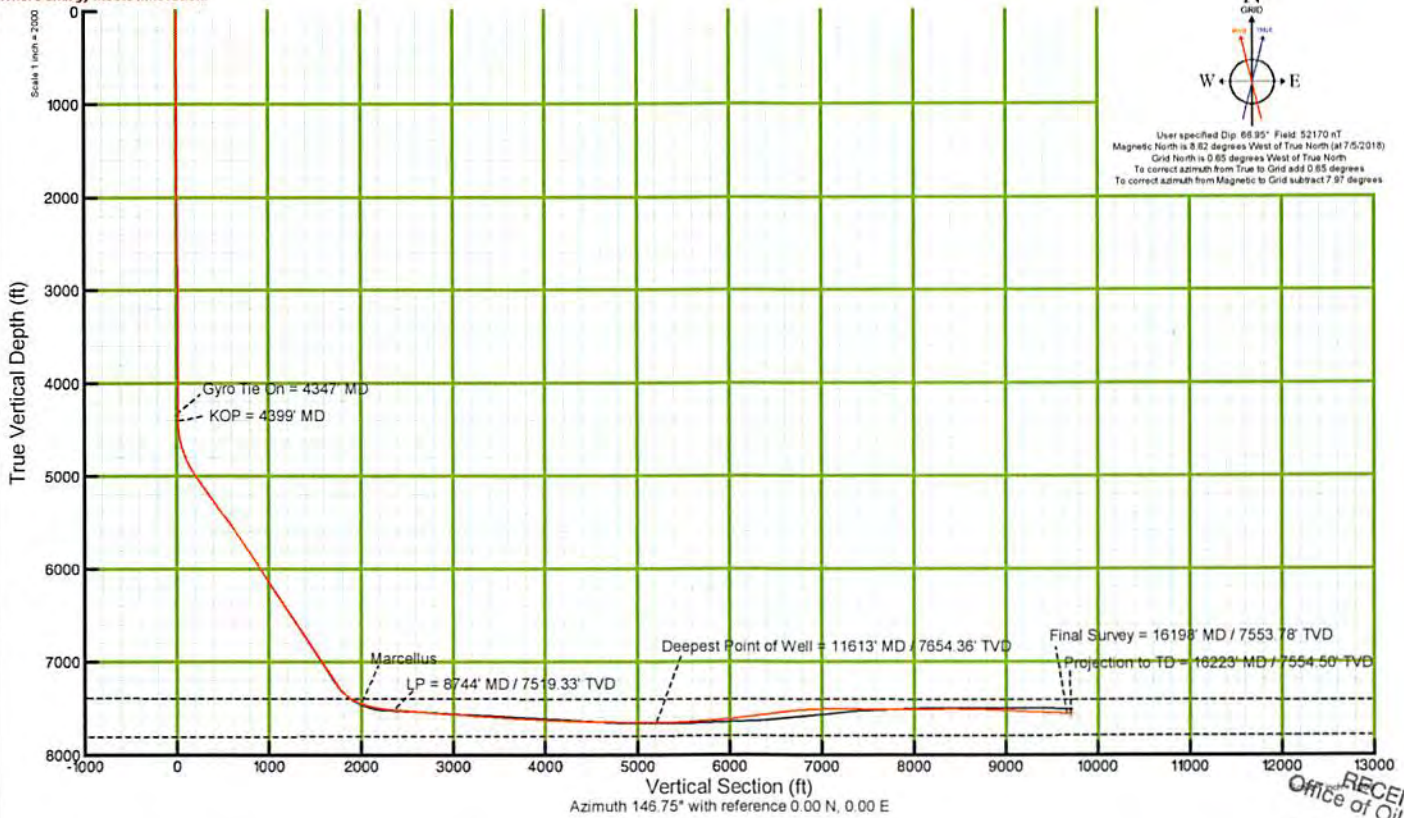
NOV 28 2018

WV Department of
Environmental Protection

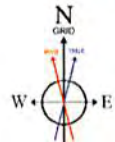


KB elevation = 1265ft
 Ground elevation = 1247ft
 All measurements taken from KB elevation

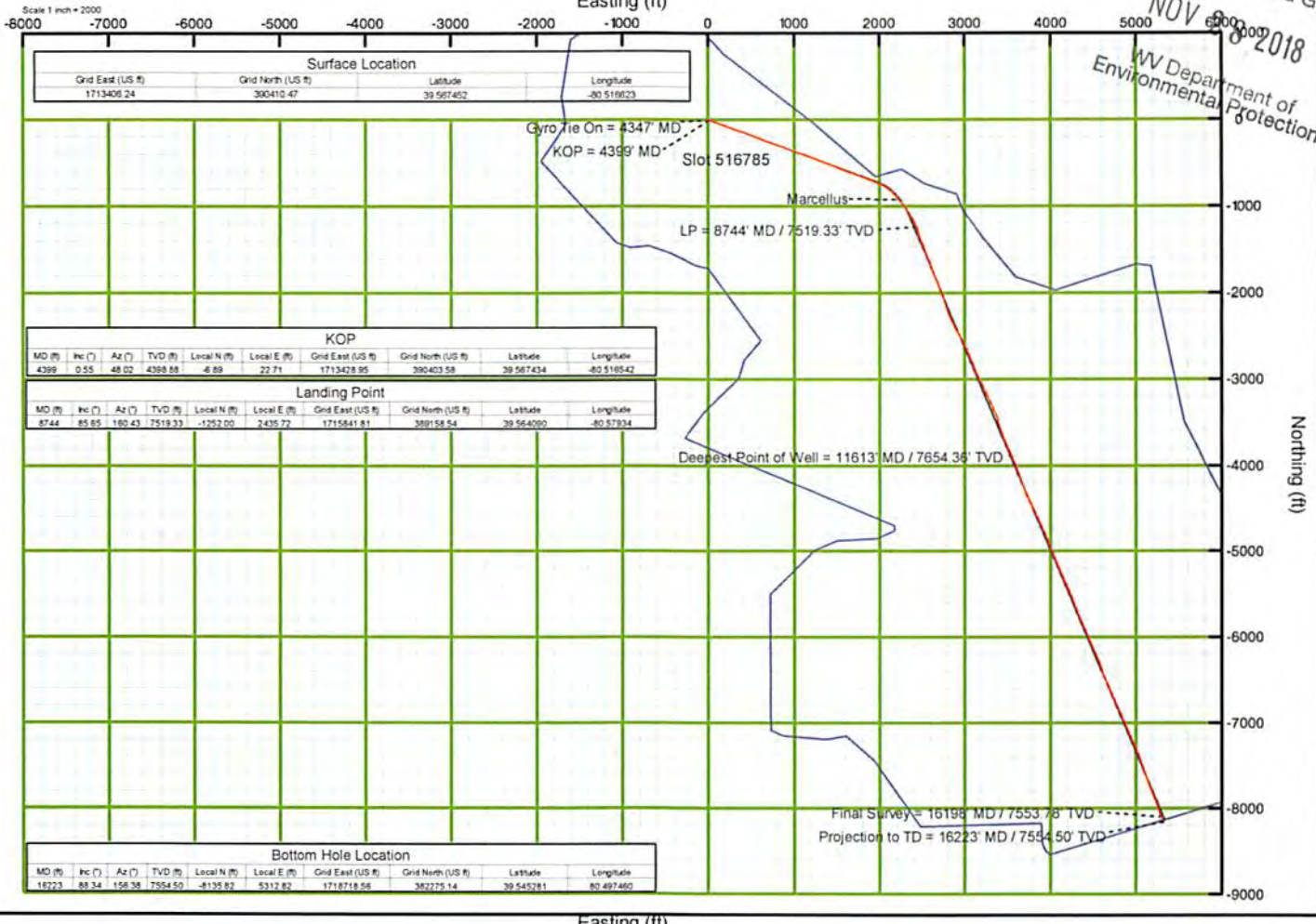
Where energy meets innovation.



User specified Dip: 68.95° Field: 52170 nT
 Magnetic North is 8.82 degrees West of True North (at 7/5/2018)
 Grid North is 0.85 degrees West of True North
 To correct azimuth from True to Grid add 0.85 degrees
 To correct azimuth from Magnetic to Grid subtract 7.97 degrees



RECEIVED
 Office of Oil and Gas
 NOV 8 2018
 WV Department of Environmental Protection



Surface Location			
Grid East (US ft)	Grid North (US ft)	Latitude	Longitude
1713406.24	390410.47	39.567452	-80.516623

KOP									
MD (ft)	Inc (°)	Az (°)	TVD (ft)	Local N (ft)	Local E (ft)	Grid East (US ft)	Grid North (US ft)	Latitude	Longitude
4399	0.55	48.02	4399.85	-6.89	22.71	1713428.95	390403.58	39.567434	-80.516542

Landing Point									
MD (ft)	Inc (°)	Az (°)	TVD (ft)	Local N (ft)	Local E (ft)	Grid East (US ft)	Grid North (US ft)	Latitude	Longitude
8744	85.85	180.43	7519.33	-1252.00	2435.72	1715841.81	389158.54	39.564080	-80.57834

Bottom Hole Location									
MD (ft)	Inc (°)	Az (°)	TVD (ft)	Local N (ft)	Local E (ft)	Grid East (US ft)	Grid North (US ft)	Latitude	Longitude
16223	85.34	156.36	7554.50	-8135.82	5312.82	1718718.56	387225.14	39.545281	-80.497460

Easting (ft)