

WW-7
8-30-06



West Virginia Department of Environmental Protection
Office of Oil and Gas

WELL LOCATION FORM: GPS

API: 47-103-71050 WELL NO.: 7221

FARM NAME: H. L. SMITH

RESPONSIBLE PARTY NAME: CONSOLIDATION COAL COMPANY

COUNTY: WETZEL DISTRICT: GRANT

QUADRANGLE: FOLSOM WV 7.5'

SURFACE OWNER: COASTAL FOREST RESOURCES COMPANY

ROYALTY OWNER: _____

UTM GPS NORTHING: 4,371,964 m (211.12')

UTM GPS EASTING: 539,859 m GPS ELEVATION: 369 m

The Responsible Party named above has chosen to submit GPS coordinates in lieu of preparing a new well location plat for a plugging permit or assigned API number on the above well. The Office of Oil and Gas will not accept GPS coordinates that do not meet the following requirements:

1. Datum: NAD 1983, Zone: 17 North, Coordinate Units: meters, Altitude: height above mean sea level (MSL) – meters.
2. Accuracy to Datum – 3.05 meters
3. Data Collection Method:

Survey grade GPS _____ : Post Processed Differential _____

Real-Time Differential _____

Mapping Grade GPS X : Post Processed Differential X

Real-Time Differential _____

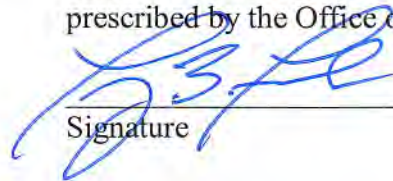
RECEIVED
Office of Oil and Gas

APR 01 2019

WV Department of
Environmental Protection

4. **Letter size copy of the topography map showing the well location.**

I the undersigned, hereby certify this data is correct to the best of my knowledge and belief and shows all the information required by law and the regulations issued and prescribed by the Office of Oil and Gas.



Signature

Professional Surveyor

Title

MARCH 28, 2019

Date

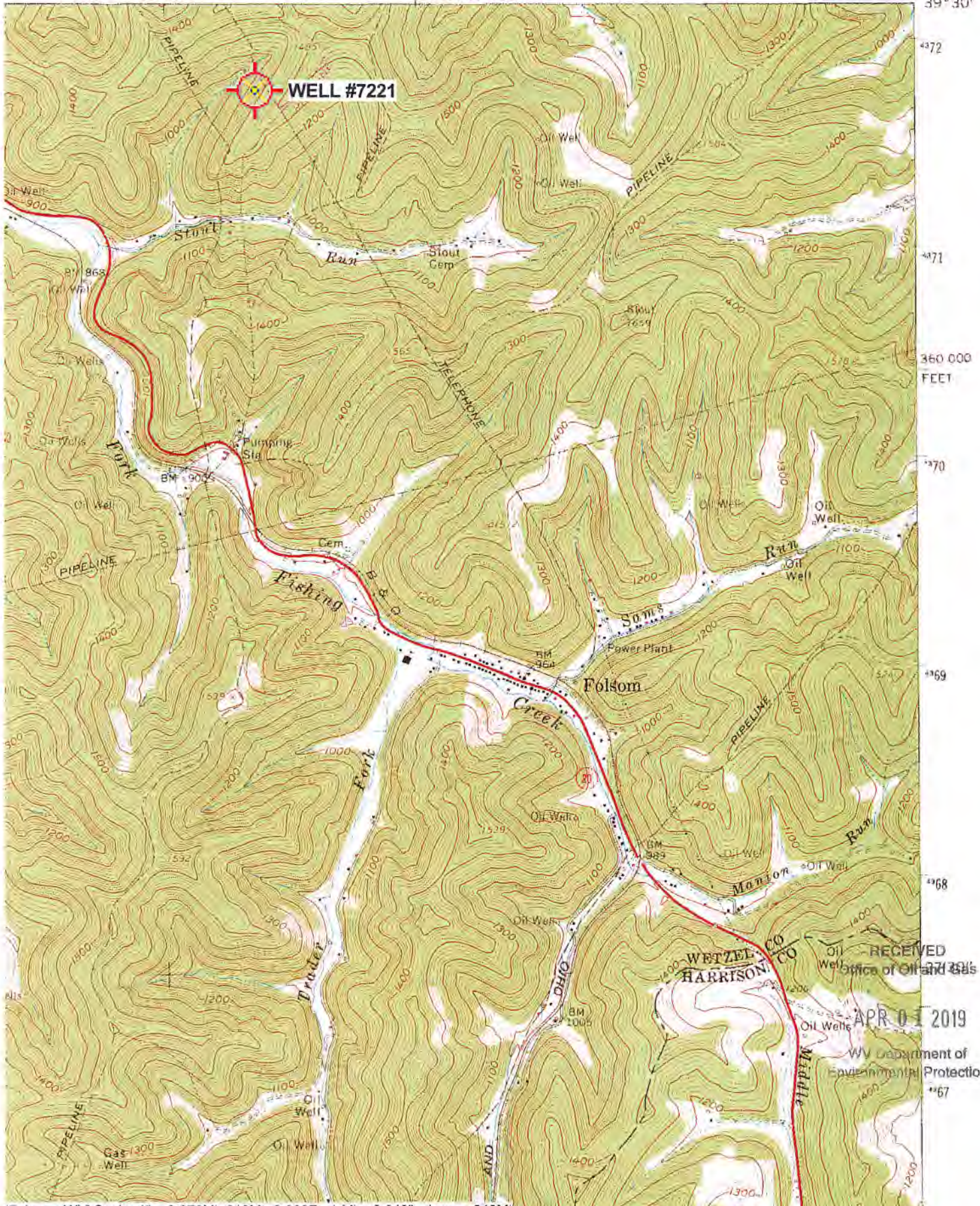
47 10 30 33 07 P

FOLSOM QUADRANGLE
WEST VIRGINIA
7.5 MINUTE SERIES (TOPOGRAPHIC)
NE/4 CENTER POINT 15' QUADRANGLE

1963 III SW
(GLOVER GAP)

EY

139 32'30" 540 1 710 000 FEET 542 80° 30' 39° 30'



Folsom; WV Scale: 1" = 0.379Mi 610M 2,000Ft, 1 Mi = 2.640" , 1 cm = 240M

RECEIVED
Office of Oil and Gas
APR 01 2019
WV Department of
Environmental Protection
1167

Well# 7221
FOLSOM WV 7.5' Quad
Scale: 1" = 500'



1400
PIPELINE

1485

Well# 7221

1000

1200

PIPELINE

RECEIVED
Office of Oil and Gas

APR 01 2019

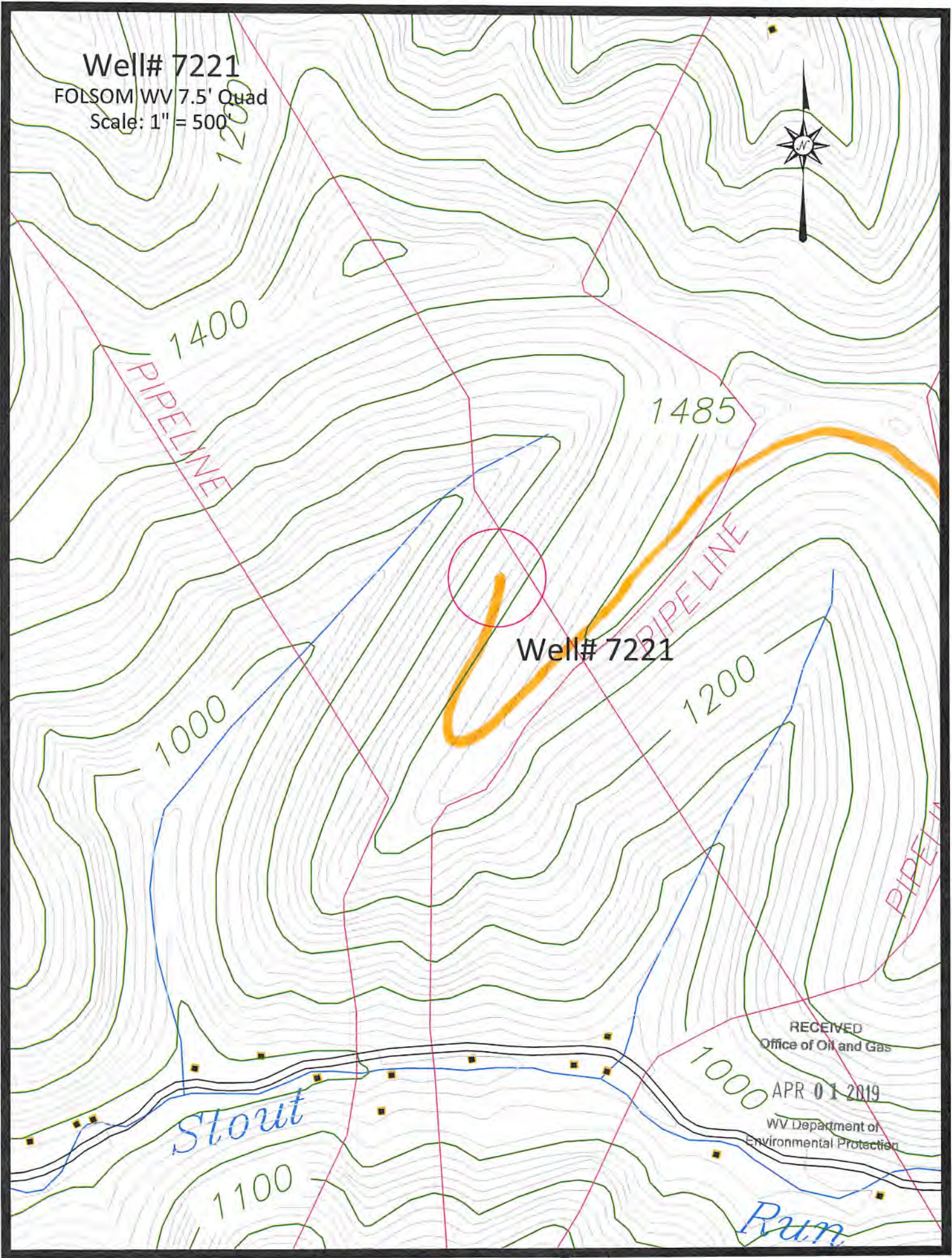
WV Department of
Environmental Protection

Stout

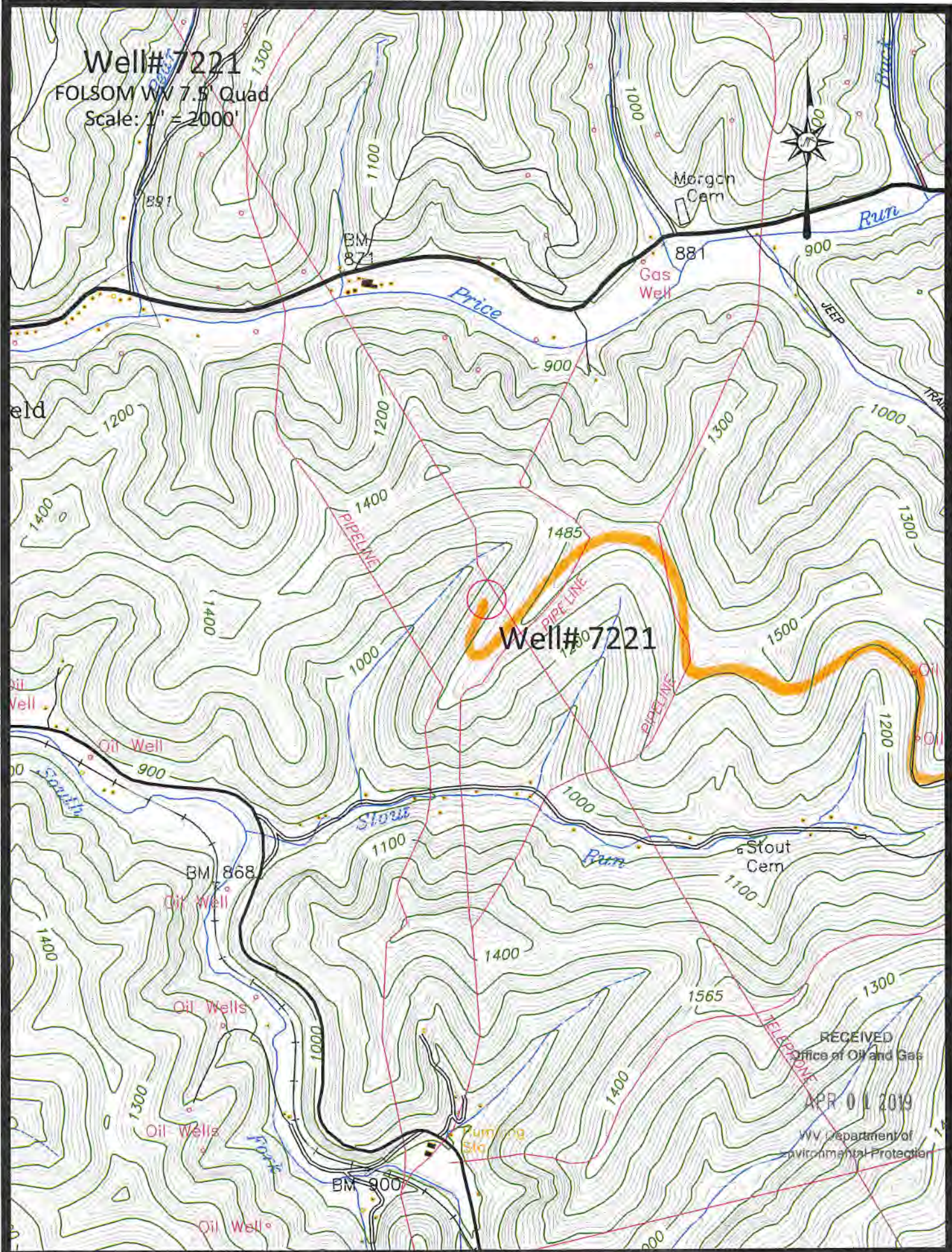
1100

Run

Access Road



Well# 7221
FOLSOM WV 7.5' Quad
Scale: 1" = 2000'



RECEIVED
Office of Oil and Gas
APR 01 2019
WV Department of
Environmental Protection

Access Road