

WW-7
8-30-06



West Virginia Department of Environmental Protection
Office of Oil and Gas
WELL LOCATION FORM: GPS

API: 47-103-70969 WELL NO.: 7206

FARM NAME: P. EDGELL HEIRS

RESPONSIBLE PARTY NAME: CONSOLIDATION COAL COMPANY

COUNTY: WETZEL DISTRICT: GRANT

QUADRANGLE: FOLSOM WV 7.5'

SURFACE OWNER: SHELIA JEAN & JOHN CHARLES TEDROW

ROYALTY OWNER: _____

UTM GPS NORTHING: 4,371,548 m

UTM GPS EASTING: 539,582 m GPS ELEVATION: 340 m (1115')

The Responsible Party named above has chosen to submit GPS coordinates in lieu of preparing a new well location plat for a plugging permit or assigned API number on the above well. The Office of Oil and Gas will not accept GPS coordinates that do not meet the following requirements:

1. Datum: NAD 1983, Zone: 17 North, Coordinate Units: meters, Altitude: height above mean sea level (MSL) – meters.
2. Accuracy to Datum – 3.05 meters
3. Data Collection Method:

Survey grade GPS _____: Post Processed Differential _____

Real-Time Differential _____

Mapping Grade GPS : Post Processed Differential

Real-Time Differential _____

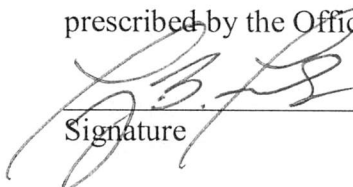
4. **Letter size copy of the topography map showing the well location.**

I the undersigned, hereby certify this data is correct to the best of my knowledge and belief and shows all the information required by law and the regulations issued and prescribed by the Office of Oil and Gas.

RECEIVED
Office of Oil and Gas

AUG 19 2019

WV Department of
Environmental Protection


Signature

Professional Surveyor
Title

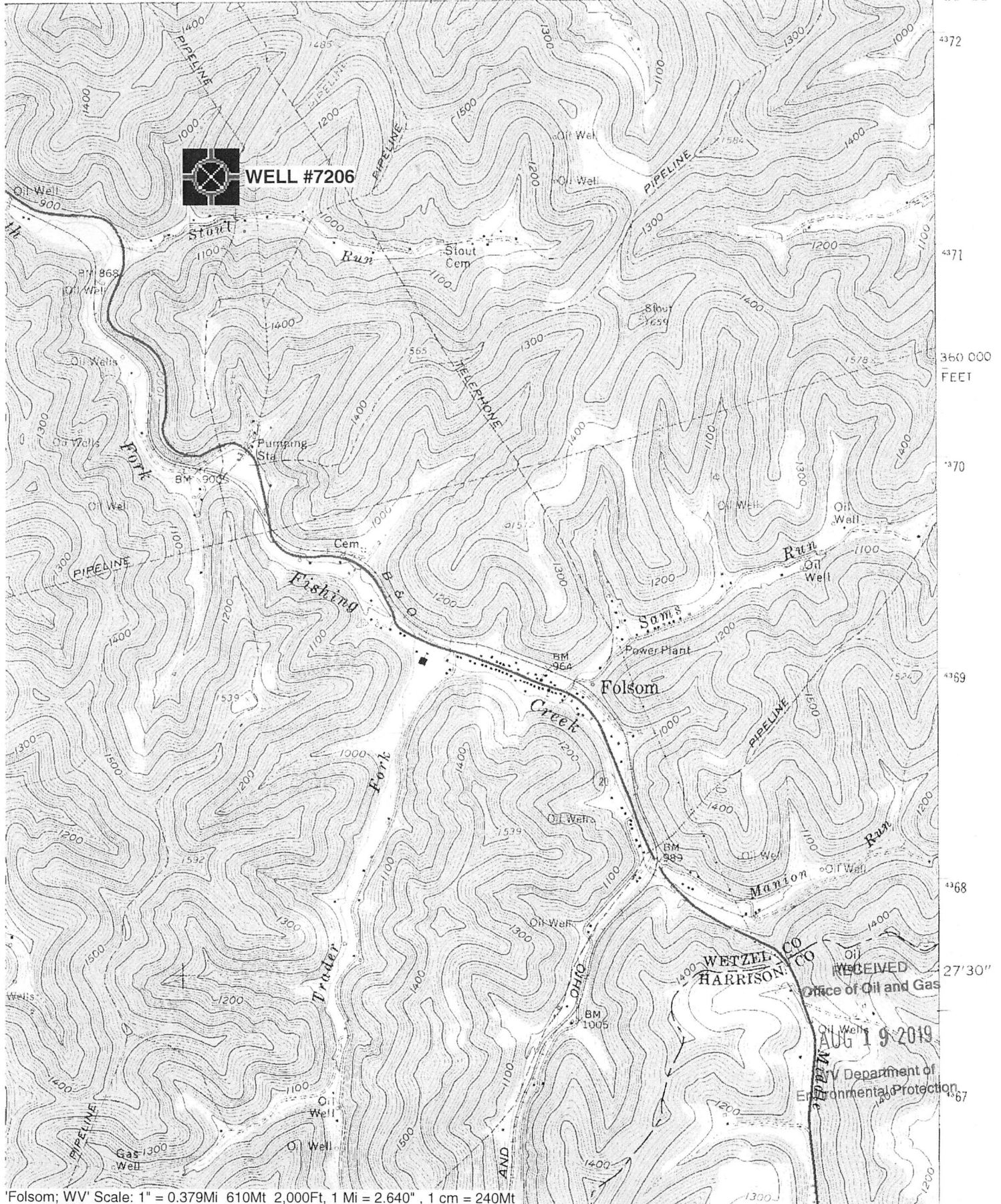
JUNE 27, 2019
Date

47 10303 326 F

FOLSOM QUADRANGLE
WEST VIRGINIA
7.5 MINUTE SERIES (TOPOGRAPHIC)
NE/4 CENTER POINT 15' QUADRANGLE

1963 III SW
(GLOVER GAP)

39 32'30" 40 1 710 000 FEET 42 80° 30' 39° 30'



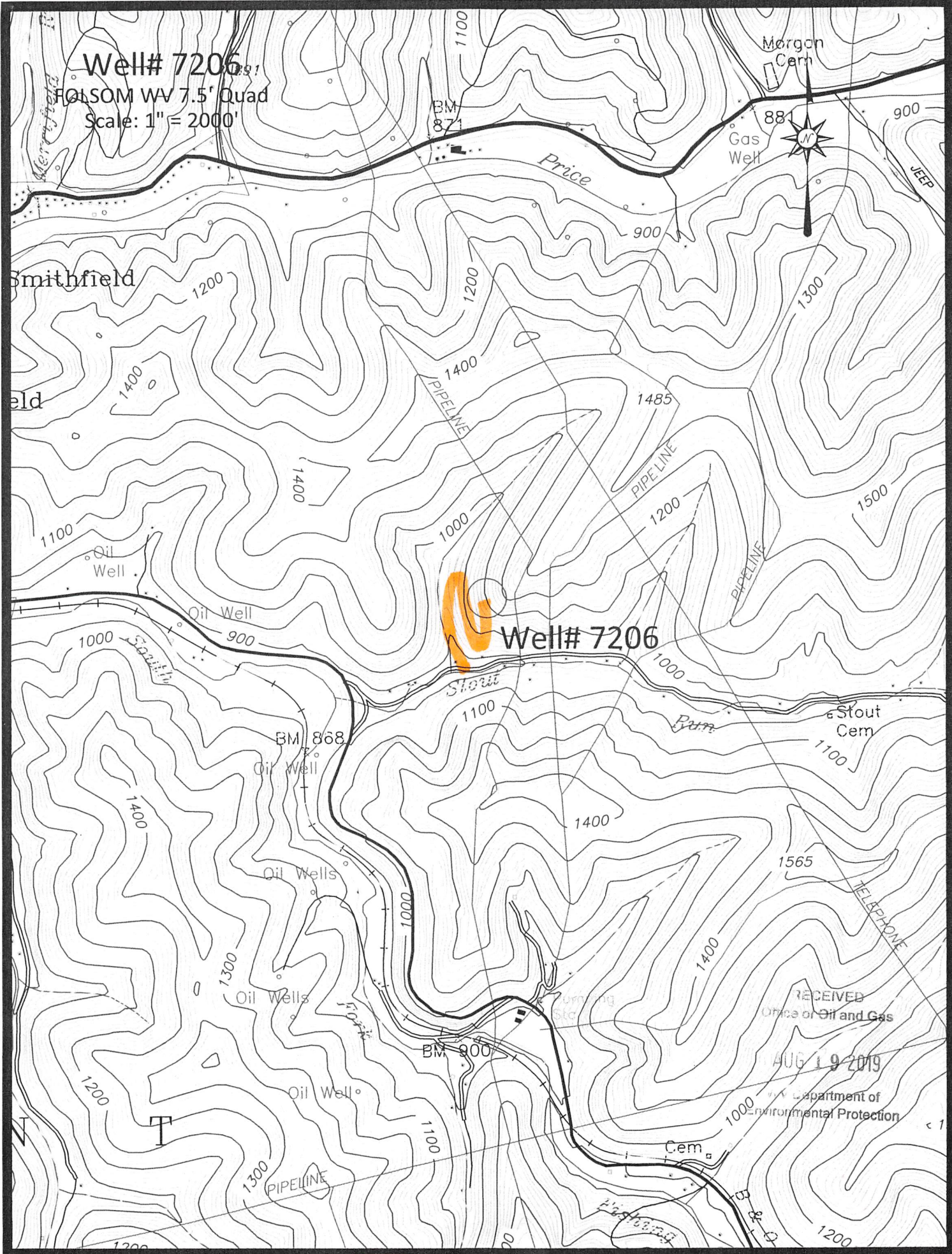
Folsom; WV Scale: 1" = 0.379Mi 610Mt 2,000Ft, 1 Mi = 2.640", 1 cm = 240Mt

RECEIVED
Office of Oil and Gas
AUG 19 2019
U.S. Department of
Environmental Protection

Well# 7206

FOLSOM WV 7.5' Quad

Scale: 1" = 2000'



Well# 7206

RECEIVED
Office of Oil and Gas

AUG 19 2019

Department of
Environmental Protection

Access Road

Well# 7206

FOLSOM WV 7.5' Quad

Scale: 1" = 500'

1485



PIPELINE

PIPELINE

1000

1200

Well# 7206

Stout

1100

1000


868

RECEIVED
Office of Oil and Gas

AUG 19 2019

WV Department of
Environmental Protection

1400

 *Drill*