



Actual Wellpath Report

Michael Kuhn 8H AWP Proj: 25409'

Page 1 of 12



REFERENCE WELLPATH IDENTIFICATION			
Operator	EQT PRODUCTION COMPANY	Well	Michael Kuhn 8H (L-003950)
Field	Wetzel	API/Legal	
Facility	Big 467 Pad	Wellbore	Michael Kuhn 8H AWB
Slot	Slot 8H		

REPORT SETUP INFORMATION			
Projection System	NAD27 / Lambert West Virginia SP, Northern Zone (4701), US feet	Software System	WellArchitect® 6.0
North Reference	Grid	User	Manajohj
Scale	0.999941	Report Generated	2/16/2022 at 10:27:19 PM
Convergence at slot	0.66° West	Database	WA_MPL_EASTERNUS_Defn

WELLPATH LOCATION						
	Local coordinates		Grid coordinates		Geographic coordinates	
	North[ft]	East[ft]	Easting[US ft]	Northing[US ft]	Latitude	Longitude
Slot Location	-14.61	43.50	1709479.01	407839.28	39°36'54.6384"N	80°31'52.5462"W
Facility Reference Pt			1709435.51	407853.89	39°36'54.7779"N	80°31'53.1042"W
Field Reference Pt			1688243.35	385255.46	39°33'8.9436"N	80°36'20.3370"W

WELLPATH DATUM			
Calculation method	Minimum curvature	Patterson 294 (RKB) to Facility Vertical Datum	1536.00ft
Horizontal Reference Pt	Slot	Patterson 294 (RKB) to Mean Sea Level	1536.00ft
Vertical Reference Pt	Patterson 294 (RKB)	Patterson 294 (RKB) to Ground Level at Slot (Slot 8H)	28.00ft
MD Reference Pt	Patterson 294 (RKB)	Section Origin	N 0.00, E 0.00 ft
Field Vertical Reference	Mean Sea Level	Section Azimuth	149.00°

RECEIVED
 Office of Oil and Gas
 JUL 31 2023
 WV Department of
 Environmental Protection



Actual Wellpath Report

Michael Kuhn 8H AWP Proj: 25409'

Page 2 of 12



REFERENCE WELLPATH IDENTIFICATION			
Operator	EQT PRODUCTION COMPANY	Well	Michael Kuhn 8H (L-003950)
Field	Wetzel	API/Legal	
Facility	Big 467 Pad	Wellbore	Michael Kuhn 8H AWB
Slot	Slot 8H		

WELLPATH DATA (266 stations) † = interpolated, ‡ = extrapolated station

MD [ft]	Inclination [°]	Azimuth [°]	TVD [ft]	Vert Sect [ft]	North [ft]	East [ft]	Grid East [US ft]	Grid North [US ft]	Latitude	Longitude	Closure Dist [ft]	Closure Dir [°]	DLS [°/100ft]	Build Rate [°/100ft]	Turn Rate [°/100ft]
0.00†	0.000	289.400	0.00	0.00	0.00	0.00	1709479.01	407839.28	39°36'54.6384"N	80°31'52.5462"W	0.00	0.000	0.00	0.00	0.00
28.00	0.000	289.400	28.00	0.00	0.00	0.00	1709479.01	407839.28	39°36'54.6384"N	80°31'52.5462"W	0.00	0.000	0.00	0.00	0.00
115.00	0.230	289.400	115.00	-0.13	0.06	-0.16	1709478.85	407839.34	39°36'54.6390"N	80°31'52.5483"W	0.17	289.400	0.26	0.26	0.00
215.00	0.210	287.260	215.00	-0.43	0.18	-0.53	1709478.48	407839.46	39°36'54.6401"N	80°31'52.5530"W	0.56	288.698	0.02	-0.02	-2.14
315.00	0.110	295.010	315.00	-0.64	0.27	-0.79	1709478.22	407839.55	39°36'54.6410"N	80°31'52.5564"W	0.84	289.106	0.10	-0.10	7.75
415.00	0.110	310.450	415.00	-0.81	0.38	-0.95	1709478.06	407839.66	39°36'54.6420"N	80°31'52.5584"W	1.02	291.616	0.03	0.00	15.44
515.00	0.110	308.770	515.00	-0.99	0.50	-1.10	1709477.91	407839.78	39°36'54.6432"N	80°31'52.5603"W	1.21	294.432	0.00	0.00	-1.68
615.00	0.110	317.650	615.00	-1.18	0.63	-1.24	1709477.77	407839.91	39°36'54.6445"N	80°31'52.5621"W	1.39	296.973	0.02	0.00	8.88
715.00	0.100	335.820	715.00	-1.36	0.78	-1.34	1709477.67	407840.06	39°36'54.6460"N	80°31'52.5634"W	1.55	300.252	0.03	-0.01	18.17
815.00	0.100	341.200	815.00	-1.53	0.94	-1.40	1709477.61	407840.22	39°36'54.6476"N	80°31'52.5643"W	1.69	303.913	0.01	0.00	5.38
915.00	0.120	348.610	915.00	-1.71	1.13	-1.45	1709477.56	407840.41	39°36'54.6494"N	80°31'52.5649"W	1.84	307.859	0.02	0.02	7.41
1015.00	0.110	341.200	1015.00	-1.91	1.32	-1.50	1709477.51	407840.60	39°36'54.6513"N	80°31'52.5656"W	2.00	311.328	0.02	-0.01	-7.41
1115.00	0.110	348.040	1115.00	-2.09	1.51	-1.55	1709477.46	407840.79	39°36'54.6531"N	80°31'52.5663"W	2.16	314.114	0.01	0.00	6.84
1215.00	0.120	340.170	1215.00	-2.29	1.70	-1.61	1709477.40	407840.98	39°36'54.6550"N	80°31'52.5670"W	2.34	316.552	0.02	0.01	-7.87
1315.00	0.100	346.620	1315.00	-2.47	1.88	-1.67	1709477.34	407841.16	39°36'54.6568"N	80°31'52.5678"W	2.51	318.506	0.02	-0.02	6.45
1415.00	0.350	355.760	1415.00	-2.83	2.27	-1.71	1709477.30	407841.55	39°36'54.6607"N	80°31'52.5684"W	2.84	323.067	0.25	0.25	9.14
1515.00	1.590	19.450	1514.98	-3.98	3.88	-1.27	1709477.74	407843.16	39°36'54.6767"N	80°31'52.5630"W	4.09	341.917	1.28	1.24	23.69
1615.00	2.810	43.310	1614.91	-5.53	6.98	0.87	1709479.88	407846.26	39°36'54.7075"N	80°31'52.5361"W	7.03	7.148	1.50	1.22	23.86
1715.00	3.190	44.700	1714.77	-6.88	10.74	4.51	1709483.52	407850.02	39°36'54.7450"N	80°31'52.4901"W	11.65	22.798	0.39	0.38	1.39
1815.00	2.790	37.730	1814.63	-8.45	14.64	7.96	1709486.97	407853.92	39°36'54.7840"N	80°31'52.4467"W	16.66	28.532	0.54	-0.40	-6.97
1915.00	2.380	27.840	1914.53	-10.41	18.40	10.42	1709489.43	407857.68	39°36'54.8214"N	80°31'52.4158"W	21.15	29.518	0.60	-0.41	-9.89
2015.00	2.430	23.400	2014.44	-12.72	22.18	12.23	1709491.24	407861.46	39°36'54.8590"N	80°31'52.3932"W	25.33	28.870	0.19	0.05	-4.44
2115.00	2.960	24.270	2114.33	-15.42	26.48	14.13	1709493.14	407865.76	39°36'54.9017"N	80°31'52.3695"W	30.02	28.089	0.53	0.53	0.87
2215.00	3.060	26.990	2214.19	-18.31	31.21	16.41	1709495.42	407870.49	39°36'54.9488"N	80°31'52.3412"W	35.26	27.726	0.17	0.10	2.72
2315.00	2.210	44.750	2314.09	-20.20	34.96	18.98	1709497.98	407874.24	39°36'54.9861"N	80°31'52.3089"W	39.78	28.490	1.17	-0.85	17.76
2415.00	2.130	55.310	2414.02	-20.79	37.39	21.86	1709500.87	407876.67	39°36'55.0104"N	80°31'52.2724"W	43.31	30.314	0.41	-0.08	10.56
2515.00	1.600	54.150	2513.97	-21.03	39.26	24.52	1709503.53	407878.54	39°36'55.0292"N	80°31'52.2387"W	46.29	31.984	0.53	-0.53	-1.16
2615.00	1.220	2.110	2613.94	-22.04	41.15	25.69	1709504.70	407880.42	39°36'55.0480"N	80°31'52.2240"W	48.51	31.980	1.28	-0.38	-52.04
2715.00	1.400	347.130	2713.91	-24.09	43.40	25.46	1709504.47	407882.68	39°36'55.0702"N	80°31'52.2273"W	50.32	30.395	0.39	0.18	-14.98
2815.00	1.460	345.410	2813.88	-26.47	45.83	24.87	1709503.87	407885.10	39°36'55.0941"N	80°31'52.2352"W	52.14	28.485	0.07	0.06	-1.72

RECEIVED
 Office of Oil and Gas
 Environmental Protection
 JUL 31 2023
 WV Department of Environmental Protection



Actual Wellpath Report

Michael Kuhn 8H AWP Proj: 25409'

Page 3 of 12



REFERENCE WELLPATH IDENTIFICATION			
Operator	EQT PRODUCTION COMPANY	Well	Michael Kuhn 8H (L-003950)
Field	Wetzel	API/Legal	
Facility	Big 467 Pad	Wellbore	Michael Kuhn 8H AWB
Slot	Slot 8H		

WELLPATH DATA (266 stations)																
MD [ft]	Inclination [°]	Azimuth [°]	TVD [ft]	Vert Sect [ft]	North [ft]	East [ft]	Grid East [US ft]	Grid North [US ft]	Latitude	Longitude	Closure Dist [ft]	Closure Dir [°]	DLS [°/100ft]	Build Rate [°/100ft]	Turn Rate [°/100ft]	
2915.00	1.750	341.870	2913.84	-29.18	48.51	24.07	1709503.08	407887.79	39°36'55.1205"N	80°31'52.2458"W	54.15	26.390	0.31	0.29	-3.54	
3015.00	1.670	322.520	3013.80	-32.12	51.12	22.71	1709501.72	407890.39	39°36'55.1461"N	80°31'52.2636"W	55.93	23.952	0.58	-0.08	-19.35	
3115.00	2.080	290.290	3113.75	-34.98	52.90	20.12	1709499.13	407892.18	39°36'55.1635"N	80°31'52.2969"W	56.60	20.822	1.11	0.41	-32.23	
3215.00	3.520	285.690	3213.63	-38.63	54.36	15.46	1709494.47	407893.64	39°36'55.1774"N	80°31'52.3566"W	56.52	15.876	1.46	1.44	-4.60	
3315.00	4.180	289.190	3313.40	-43.67	56.39	9.06	1709488.07	407895.67	39°36'55.1967"N	80°31'52.4387"W	57.11	9.131	0.70	0.66	3.50	
3415.00	4.240	289.350	3413.13	-49.31	58.81	2.13	1709481.14	407898.09	39°36'55.2199"N	80°31'52.5276"W	58.85	2.077	0.06	0.06	0.16	
3515.00	4.160	287.180	3512.86	-54.86	61.11	-4.82	1709474.19	407900.39	39°36'55.2418"N	80°31'52.6168"W	61.30	355.490	0.18	-0.08	-2.17	
3615.00	4.020	285.700	3612.61	-60.12	63.13	-11.66	1709467.35	407902.40	39°36'55.2610"N	80°31'52.7044"W	64.20	349.536	0.18	-0.14	-1.48	
3715.00	4.050	285.940	3712.36	-65.25	65.05	-18.43	1709460.58	407904.32	39°36'55.2791"N	80°31'52.7912"W	67.61	344.181	0.03	0.03	0.24	
3815.00	3.970	285.120	3812.11	-70.32	66.92	-25.17	1709453.84	407906.20	39°36'55.2969"N	80°31'52.8776"W	71.50	339.390	0.10	-0.08	-0.82	
3915.00	3.990	284.140	3911.87	-75.28	68.67	-31.88	1709447.13	407907.95	39°36'55.3135"N	80°31'52.9637"W	75.71	335.096	0.07	0.02	-0.98	
4015.00	3.950	282.640	4011.63	-80.13	70.28	-38.62	1709440.40	407909.55	39°36'55.3285"N	80°31'53.0499"W	80.19	331.211	0.11	-0.04	-1.50	
4115.00	3.950	281.290	4111.40	-84.82	71.70	-45.36	1709433.66	407910.98	39°36'55.3419"N	80°31'53.1362"W	84.84	327.685	0.09	0.00	-1.35	
4215.00	4.130	288.730	4211.15	-89.89	73.54	-52.14	1709426.87	407912.81	39°36'55.3592"N	80°31'53.2232"W	90.15	324.660	0.55	0.18	7.44	
4315.00	4.260	289.020	4310.88	-95.48	75.90	-59.07	1709419.95	407915.18	39°36'55.3818"N	80°31'53.3120"W	96.18	322.111	0.13	0.13	0.29	
4415.00	4.380	288.670	4410.60	-101.24	78.33	-66.19	1709412.82	407917.61	39°36'55.4050"N	80°31'53.4035"W	102.56	319.802	0.12	0.12	-0.35	
4515.00	4.440	287.130	4510.30	-107.03	80.70	-73.51	1709405.50	407919.97	39°36'55.4276"N	80°31'53.4973"W	109.16	317.668	0.13	0.06	-1.54	
4615.00	4.430	286.000	4610.00	-112.74	82.90	-80.92	1709398.09	407922.18	39°36'55.4485"N	80°31'53.5923"W	115.85	315.692	0.09	-0.01	-1.13	
4715.00	4.020	283.420	4709.73	-118.02	84.78	-88.04	1709390.97	407924.05	39°36'55.4663"N	80°31'53.6836"W	122.23	313.918	0.45	-0.41	-2.58	
4815.00	3.560	280.770	4809.51	-122.54	86.17	-94.50	1709384.51	407925.45	39°36'55.4793"N	80°31'53.7663"W	127.89	312.360	0.49	-0.46	-2.65	
4915.00	3.260	279.480	4909.33	-126.45	87.22	-100.36	1709378.66	407926.50	39°36'55.4890"N	80°31'53.8413"W	132.96	310.994	0.31	-0.30	-1.29	
5015.00	3.400	279.680	5009.16	-130.23	88.19	-106.09	1709372.93	407927.46	39°36'55.4979"N	80°31'53.9146"W	137.95	309.737	0.14	0.14	0.20	
5115.00	3.480	279.120	5108.98	-134.12	89.17	-112.01	1709367.01	407928.44	39°36'55.5069"N	80°31'53.9904"W	143.17	308.523	0.09	0.08	-0.56	
5215.00	4.060	283.950	5208.77	-138.58	90.50	-118.44	1709360.58	407929.78	39°36'55.5194"N	80°31'54.0728"W	149.06	307.385	0.66	0.58	4.83	
5315.00	4.580	286.150	5308.48	-144.00	92.47	-125.71	1709353.31	407931.74	39°36'55.5380"N	80°31'54.1660"W	156.05	306.337	0.55	0.52	2.20	
5415.00	5.100	290.240	5408.13	-150.40	95.12	-133.71	1709345.30	407934.39	39°36'55.5632"N	80°31'54.2686"W	164.09	305.425	0.62	0.52	4.09	
5515.00	5.050	292.380	5507.73	-157.40	98.33	-141.95	1709337.06	407937.60	39°36'55.5940"N	80°31'54.3744"W	172.68	304.709	0.20	-0.05	2.14	
5615.00	4.520	291.950	5607.38	-164.07	101.48	-149.68	1709329.34	407940.75	39°36'55.6243"N	80°31'54.4736"W	180.84	304.136	0.53	-0.53	-0.43	
5715.00	3.940	290.240	5707.11	-169.90	104.14	-156.56	1709322.46	407943.41	39°36'55.6498"N	80°31'54.5618"W	188.03	303.631	0.59	-0.58	-1.71	
5815.00	4.110	286.970	5806.86	-175.24	106.37	-163.21	1709315.81	407945.65	39°36'55.6711"N	80°31'54.6471"W	194.81	303.095	0.29	0.17	-3.27	

RECEIVED
 Office of Oil and Gas
 WV Department of Environmental Protection
 JUL 31 2023



Actual Wellpath Report

Michael Kuhn 8H AWP Proj: 25409'
Page 4 of 12



REFERENCE WELLPATH IDENTIFICATION			
Operator	EQT PRODUCTION COMPANY	Well	Michael Kuhn 8H (L-003950)
Field	Wetzel	API/Legal	
Facility	Big 467 Pad	Wellbore	Michael Kuhn 8H AWB
Slot	Slot 8H		

WELLPATH DATA (266 stations)															
MD [ft]	Inclination [°]	Azimuth [°]	TVD [ft]	Vert Sect [ft]	North [ft]	East [ft]	Grid East [US ft]	Grid North [US ft]	Latitude	Longitude	Closure Dist [ft]	Closure Dir [°]	DLS [°/100ft]	Build Rate [°/100ft]	Turn Rate [°/100ft]
5915.00	4.270	287.380	5906.60	-180.68	108.53	-170.19	1709308.83	407947.80	39°36'55.6917"N	80°31'54.7366"W	201.85	302.526	0.16	0.16	0.41
6015.00	3.510	301.340	6006.37	-186.18	111.24	-176.36	1709302.66	407950.51	39°36'55.7177"N	80°31'54.8158"W	208.51	302.241	1.21	-0.76	13.96
6115.00	3.590	304.490	6106.18	-191.74	114.60	-181.55	1709297.47	407953.87	39°36'55.7503"N	80°31'54.8827"W	214.70	302.261	0.21	0.08	3.15
6215.00	3.730	303.270	6205.97	-197.52	118.16	-186.85	1709292.17	407957.43	39°36'55.7849"N	80°31'54.9510"W	221.08	302.308	0.16	0.14	-1.22
6315.00	4.000	299.900	6305.75	-203.49	121.68	-192.59	1709286.43	407960.95	39°36'55.8191"N	80°31'55.0249"W	227.81	302.285	0.35	0.27	-3.37
6415.00	4.330	299.340	6405.48	-209.82	125.27	-198.91	1709280.11	407964.54	39°36'55.8538"N	80°31'55.1061"W	235.07	302.202	0.33	0.33	-0.56
6515.00	4.210	301.520	6505.20	-216.36	129.04	-205.33	1709273.69	407968.31	39°36'55.8903"N	80°31'55.1886"W	242.51	302.147	0.20	-0.12	2.18
6615.00	4.400	303.030	6604.92	-223.06	133.05	-211.67	1709267.35	407972.32	39°36'55.9292"N	80°31'55.2703"W	250.02	302.151	0.22	0.19	1.51
6656.00	4.760	303.170	6645.79	-226.01	134.84	-214.42	1709264.61	407974.11	39°36'55.9466"N	80°31'55.3056"W	253.29	302.164	0.88	0.88	0.34
6691.00	4.850	303.160	6680.67	-228.65	136.44	-216.87	1709262.15	407975.71	39°36'55.9622"N	80°31'55.3372"W	256.22	302.175	0.26	0.26	-0.03
6737.00	5.320	301.070	6726.49	-232.28	138.60	-220.32	1709258.70	407977.88	39°36'55.9832"N	80°31'55.3817"W	260.30	302.174	1.10	1.02	-4.54
6779.00	5.790	300.380	6768.29	-235.86	140.68	-223.82	1709255.20	407979.95	39°36'56.0033"N	80°31'55.4266"W	264.36	302.151	1.13	1.12	-1.64
6874.00	9.190	325.550	6862.49	-247.65	149.36	-232.25	1709246.77	407988.64	39°36'56.0881"N	80°31'55.5356"W	276.13	302.746	4.89	3.58	26.49
6969.00	14.060	341.060	6955.53	-266.52	166.55	-240.29	1709238.73	408005.82	39°36'56.2571"N	80°31'55.6409"W	292.37	304.726	6.05	5.13	16.33
7064.00	5.610	0.780	7049.08	-281.78	182.14	-243.98	1709235.04	408021.41	39°36'56.4107"N	80°31'55.6903"W	304.47	306.742	9.45	-8.89	20.76
7159.00	6.180	90.360	7143.74	-283.07	186.76	-238.80	1709240.23	408026.03	39°36'56.4569"N	80°31'55.6248"W	303.16	308.028	8.75	0.60	94.29
7254.00	12.090	131.250	7237.58	-270.91	180.15	-226.18	1709252.84	408019.42	39°36'56.3931"N	80°31'55.4626"W	289.16	308.537	8.88	6.22	43.04
7349.00	18.090	139.990	7329.27	-246.85	162.28	-209.20	1709269.82	408001.55	39°36'56.2184"N	80°31'55.2430"W	264.76	307.801	6.74	6.32	9.20
7444.00	27.390	142.900	7416.79	-210.47	133.49	-186.49	1709292.53	407972.76	39°36'55.9364"N	80°31'54.9486"W	229.34	305.595	9.86	9.79	3.06
7539.00	39.660	141.890	7495.84	-158.46	92.05	-154.47	1709324.55	407931.32	39°36'55.5305"N	80°31'54.5334"W	179.82	300.790	12.93	12.92	-1.06
7634.00	48.760	140.640	7563.86	-92.90	40.47	-113.02	1709365.99	407879.75	39°36'55.0255"N	80°31'53.9962"W	120.05	289.700	9.62	9.58	-1.32
7730.00	54.690	142.110	7623.31	-18.23	-18.41	-66.03	1709412.98	407820.88	39°36'54.4490"N	80°31'53.3872"W	68.55	254.425	6.29	6.18	1.53
7825.00	62.640	140.230	7672.67	62.08	-81.53	-15.16	1709463.86	407757.76	39°36'53.8310"N	80°31'52.7279"W	82.92	190.531	8.54	8.37	-1.98
7920.00	71.650	140.490	7709.53	148.54	-148.87	40.63	1709519.64	407690.41	39°36'53.1718"N	80°31'52.0052"W	154.32	164.735	9.49	9.48	0.27
8016.00	81.160	140.530	7732.07	240.72	-220.80	99.90	1709578.91	407618.49	39°36'52.4677"N	80°31'51.2374"W	242.35	155.656	9.91	9.91	0.04
8111.00	88.180	144.160	7740.89	334.60	-295.64	157.63	1709636.63	407543.66	39°36'51.7346"N	80°31'50.4889"W	335.04	151.935	8.31	7.39	3.82
8207.00	86.700	143.010	7745.18	430.07	-372.81	214.56	1709693.55	407466.49	39°36'50.9784"N	80°31'49.7502"W	430.15	150.080	1.95	-1.54	-1.20
8302.00	89.010	146.190	7748.74	524.70	-450.18	269.54	1709748.53	407389.12	39°36'50.2200"N	80°31'49.0364"W	524.70	149.090	4.14	2.43	3.35
8398.00	87.630	148.830	7751.55	620.62	-531.11	321.08	1709800.07	407308.20	39°36'49.4261"N	80°31'48.3660"W	620.62	148.846	3.10	-1.44	2.75
8493.00	89.940	148.660	7753.57	715.59	-612.30	370.35	1709849.34	407227.01	39°36'48.6293"N	80°31'47.7245"W	715.59	148.832	2.44	2.43	-0.18

RECEIVED
 Office of Oil and Gas
 Environmental Protection
 JUL 31 2025



Actual Wellpath Report

Michael Kuhn 8H AWP Proj: 25409'

Page 5 of 12



REFERENCE WELLPATH IDENTIFICATION			
Operator	EQT PRODUCTION COMPANY	Well	Michael Kuhn 8H (L-003950)
Field	Wetzel	API/Legal	
Facility	Big 467 Pad	Wellbore	Michael Kuhn 8H AWB
Slot	Slot 8H		

WELLPATH DATA (266 stations)

MD [ft]	Inclination [°]	Azimuth [°]	TVD [ft]	Vert Sect [ft]	North [ft]	East [ft]	Grid East [US ft]	Grid North [US ft]	Latitude	Longitude	Closure Dist [ft]	Closure Dir [°]	DLS [°/100ft]	Build Rate [°/100ft]	Turn Rate [°/100ft]
8588.00	89.660	147.960	7753.90	810.58	-693.14	420.26	1709899.24	407146.19	39°36'47.8361"N	80°31'47.0751"W	810.59	148.771	0.79	-0.29	-0.74
8684.00	90.830	149.330	7753.49	906.58	-775.11	470.21	1709949.19	407064.21	39°36'47.0316"N	80°31'46.4249"W	906.58	148.758	1.88	1.22	1.43
8779.00	88.250	147.950	7754.25	1001.56	-856.22	519.64	1709998.62	406983.11	39°36'46.2357"N	80°31'45.7814"W	1001.57	148.747	3.08	-2.72	-1.45
8874.00	89.110	147.440	7756.44	1096.51	-936.50	570.40	1710049.37	406902.84	39°36'45.4481"N	80°31'45.1212"W	1096.53	148.656	1.05	0.91	-0.54
8970.00	91.200	148.800	7756.18	1192.49	-1018.01	621.09	1710100.06	406821.33	39°36'44.6483"N	80°31'44.4615"W	1192.52	148.612	2.60	2.18	1.42
9065.00	88.460	148.100	7756.46	1287.48	-1098.96	670.80	1710149.76	406740.39	39°36'43.8540"N	80°31'43.8146"W	1287.51	148.600	2.98	-2.88	-0.74
9160.00	91.290	148.420	7756.67	1382.46	-1179.74	720.77	1710199.73	406659.61	39°36'43.0613"N	80°31'43.1644"W	1382.50	148.577	3.00	2.98	0.34
9255.00	89.910	144.560	7755.67	1477.34	-1258.93	773.20	1710252.16	406580.43	39°36'42.2846"N	80°31'42.4829"W	1477.41	148.443	4.31	-1.45	-4.06
9350.00	88.610	148.000	7756.90	1572.21	-1337.93	825.93	1710304.88	406501.43	39°36'41.5099"N	80°31'41.7977"W	1572.32	148.312	3.87	-1.37	3.62
9445.00	90.060	148.600	7758.00	1667.19	-1418.75	875.84	1710354.80	406420.62	39°36'40.7168"N	80°31'41.1481"W	1667.31	148.312	1.65	1.53	0.63
9540.00	90.550	149.440	7757.50	1762.19	-1500.19	924.74	1710403.69	406339.18	39°36'39.9175"N	80°31'40.5115"W	1762.30	148.350	1.02	0.52	0.88
9636.00	88.770	148.260	7758.07	1858.18	-1582.34	974.39	1710453.34	406257.03	39°36'39.1112"N	80°31'39.8651"W	1858.29	148.376	2.22	-1.85	-1.23
9731.00	91.260	149.730	7758.04	1953.17	-1663.76	1023.32	1710502.27	406175.62	39°36'38.3121"N	80°31'39.2280"W	1953.28	148.406	3.04	2.62	1.55
9826.00	88.090	148.300	7758.58	2048.16	-1745.19	1072.22	1710551.17	406094.19	39°36'37.5129"N	80°31'38.5914"W	2048.26	148.434	3.66	-3.34	-1.51
9922.00	90.310	149.430	7759.92	2144.14	-1827.35	1121.85	1710600.79	406012.04	39°36'36.7066"N	80°31'37.9453"W	2144.24	148.453	2.59	2.31	1.18
10016.00	88.400	148.390	7760.98	2238.13	-1907.84	1170.39	1710649.32	405931.56	39°36'35.9167"N	80°31'37.3135"W	2238.22	148.472	2.31	-2.03	-1.11
10111.00	89.320	148.210	7762.87	2333.10	-1988.65	1220.30	1710699.23	405850.75	39°36'35.1237"N	80°31'36.6640"W	2333.20	148.465	0.99	0.97	-0.19
10206.00	90.430	152.530	7763.08	2428.05	-2071.20	1267.25	1710746.18	405768.20	39°36'34.3132"N	80°31'36.0521"W	2428.13	148.540	4.69	1.17	4.55
10302.00	91.690	149.060	7761.30	2523.97	-2154.97	1314.08	1710793.01	405684.44	39°36'33.4906"N	80°31'35.4416"W	2524.02	148.626	3.84	1.31	-3.61
10397.00	88.740	150.060	7760.94	2618.95	-2236.87	1362.20	1710841.13	405602.55	39°36'32.6867"N	80°31'34.8148"W	2619.00	148.660	3.28	-3.11	1.05
10491.00	89.630	147.390	7762.28	2712.93	-2317.19	1410.99	1710889.91	405522.23	39°36'31.8984"N	80°31'34.1797"W	2712.98	148.662	2.99	0.95	-2.84
10587.00	90.150	151.810	7762.47	2808.90	-2399.97	1459.56	1710938.48	405439.46	39°36'31.0858"N	80°31'33.5472"W	2808.94	148.694	4.64	0.54	4.60
10682.00	89.380	147.700	7762.86	2903.87	-2482.02	1507.40	1710986.32	405357.41	39°36'30.2804"N	80°31'32.9240"W	2903.91	148.729	4.40	-0.81	-4.33
10776.00	88.920	151.430	7764.25	2997.84	-2563.04	1555.00	1711033.92	405276.39	39°36'29.4850"N	80°31'32.3040"W	2997.87	148.755	4.00	-0.49	3.97
10872.00	88.980	147.470	7766.01	3093.80	-2645.69	1603.78	1711082.69	405193.75	39°36'28.6738"N	80°31'31.6688"W	3093.83	148.776	4.12	0.06	-4.13
10967.00	90.000	151.000	7766.86	3188.78	-2727.30	1652.36	1711131.27	405112.15	39°36'27.8727"N	80°31'31.0362"W	3188.80	148.790	3.87	1.07	3.72
11062.00	89.350	148.670	7767.40	3283.76	-2809.43	1700.09	1711179.00	405030.02	39°36'27.0665"N	80°31'30.4144"W	3283.78	148.820	2.55	-0.68	-2.45
11157.00	89.420	148.910	7768.42	3378.76	-2890.68	1749.32	1711228.22	404948.78	39°36'26.2691"N	80°31'29.7737"W	3378.77	148.819	0.26	0.07	0.25
11252.00	89.850	149.540	7769.02	3473.75	-2972.30	1797.93	1711276.83	404867.17	39°36'25.4680"N	80°31'29.1408"W	3473.77	148.830	0.80	0.45	0.66
11347.00	89.660	149.810	7769.43	3568.75	-3054.30	1845.89	1711324.79	404785.17	39°36'24.6630"N	80°31'28.5161"W	3568.76	148.853	0.35	-0.20	0.28

RECEIVED
 Office of Oil and Gas
 Environmental Protection
 JUL 31 2023
 WV Department of Environmental Protection



Actual Wellpath Report

Michael Kuhn 8H AWP Proj: 25409'

Page 6 of 12



REFERENCE WELLPATH IDENTIFICATION

Operator	EQT PRODUCTION COMPANY	Well	Michael Kuhn 8H (L-003950)
Field	Wetzel	API/Legal	
Facility	Big 467 Pad	Wellbore	Michael Kuhn 8H AWB
Slot	Slot 8H		

WELLPATH DATA (266 stations)

MD [ft]	Inclination [°]	Azimuth [°]	TVD [ft]	Vert Sect [ft]	North [ft]	East [ft]	Grid East [US ft]	Grid North [US ft]	Latitude	Longitude	Closure Dist [ft]	Closure Dir [°]	DLS [°/100ft]	Build Rate [°/100ft]	Turn Rate [°/100ft]
11442.00	90.250	150.370	7769.50	3663.73	-3136.64	1893.26	1711372.16	404702.83	39°36'23.8545"N	80°31'27.8989"W	3663.74	148.885	0.86	0.62	0.59
11537.00	89.970	149.770	7769.32	3758.71	-3218.97	1940.66	1711419.55	404620.51	39°36'23.0463"N	80°31'27.2814"W	3758.72	148.915	0.70	-0.29	-0.63
11632.00	90.460	150.240	7768.96	3853.70	-3301.25	1988.15	1711467.04	404538.23	39°36'22.2385"N	80°31'26.6627"W	3853.70	148.942	0.71	0.52	0.49
11727.00	90.180	149.610	7768.43	3948.68	-3383.46	2035.76	1711514.64	404456.03	39°36'21.4315"N	80°31'26.0425"W	3948.68	148.965	0.73	-0.29	-0.66
11822.00	90.490	149.790	7767.88	4043.67	-3465.48	2083.69	1711562.57	404374.02	39°36'20.6263"N	80°31'25.4183"W	4043.67	148.983	0.38	0.33	0.19
11917.00	90.770	150.500	7766.83	4138.65	-3547.86	2130.98	1711609.86	404291.63	39°36'19.8174"N	80°31'24.8021"W	4138.65	149.009	0.80	0.29	0.75
12013.00	90.340	150.040	7765.90	4234.62	-3631.22	2178.58	1711657.46	404208.28	39°36'18.9990"N	80°31'24.1818"W	4234.62	149.038	0.66	-0.45	-0.48
12107.00	90.180	149.820	7765.48	4328.61	-3712.57	2225.68	1711704.55	404126.94	39°36'18.2003"N	80°31'23.5683"W	4328.61	149.057	0.29	-0.17	-0.23
12202.00	90.340	149.500	7765.04	4423.60	-3794.56	2273.67	1711752.54	404044.95	39°36'17.3955"N	80°31'22.9433"W	4423.60	149.070	0.38	0.17	-0.34
12297.00	90.090	149.760	7764.69	4518.59	-3876.52	2321.70	1711800.57	403962.99	39°36'16.5909"N	80°31'22.3178"W	4518.60	149.082	0.38	-0.26	0.27
12487.00	89.170	147.410	7765.92	4708.57	-4038.65	2420.72	1711899.58	403800.87	39°36'14.9998"N	80°31'21.0292"W	4708.57	149.062	1.33	-0.48	-1.24
12582.00	91.080	151.100	7765.71	4803.54	-4120.28	2469.28	1711948.14	403719.25	39°36'14.1985"N	80°31'20.3971"W	4803.55	149.066	4.37	2.01	3.88
12678.00	89.450	149.450	7765.26	4899.51	-4203.65	2516.87	1711995.73	403635.89	39°36'13.3800"N	80°31'19.7769"W	4899.52	149.090	2.42	-1.70	-1.72
12773.00	90.220	149.940	7765.54	4994.51	-4285.66	2564.81	1712043.66	403553.88	39°36'12.5749"N	80°31'19.1526"W	4994.51	149.101	0.96	0.81	0.52
12868.00	90.310	149.980	7765.10	5089.49	-4367.90	2612.37	1712091.22	403471.65	39°36'11.7675"N	80°31'18.5331"W	5089.50	149.117	0.10	0.09	0.04
12963.00	89.880	149.500	7764.94	5184.48	-4449.96	2660.24	1712139.09	403389.60	39°36'10.9620"N	80°31'17.9096"W	5184.50	149.128	0.68	-0.45	-0.51
13058.00	90.180	149.790	7764.89	5279.48	-4531.93	2708.25	1712187.09	403307.62	39°36'10.1572"N	80°31'17.2844"W	5279.49	149.138	0.44	0.32	0.31
13153.00	90.400	150.190	7764.41	5374.46	-4614.20	2755.76	1712234.60	403225.37	39°36'9.3496"N	80°31'16.6655"W	5374.48	149.153	0.48	0.23	0.42
13248.00	89.940	149.940	7764.13	5469.44	-4696.52	2803.17	1712282.01	403143.05	39°36'8.5414"N	80°31'16.0479"W	5469.47	149.169	0.55	-0.48	-0.26
13343.00	90.000	149.170	7764.18	5564.44	-4778.42	2851.31	1712330.14	403061.15	39°36'7.7374"N	80°31'15.4211"W	5564.46	149.175	0.81	0.06	-0.81
13438.00	91.630	149.490	7762.83	5659.42	-4860.12	2899.76	1712378.59	402979.46	39°36'6.9354"N	80°31'14.7903"W	5659.45	149.178	1.75	1.72	0.34
13533.00	90.580	150.170	7760.99	5754.39	-4942.24	2947.49	1712426.32	402897.35	39°36'6.1293"N	80°31'14.1686"W	5754.43	149.189	1.32	-1.11	0.72
13629.00	91.020	149.670	7759.65	5850.37	-5025.30	2995.60	1712474.43	402814.29	39°36'5.3138"N	80°31'13.5419"W	5850.41	149.201	0.69	0.46	-0.52
13723.00	90.370	145.870	7758.51	5944.33	-5104.79	3045.72	1712524.55	402734.80	39°36'4.5338"N	80°31'12.8901"W	5944.35	149.178	4.10	-0.69	-4.04
13819.00	91.170	147.710	7757.22	6040.24	-5185.10	3098.29	1712577.11	402654.49	39°36'3.7461"N	80°31'12.2069"W	6040.26	149.140	2.09	0.83	1.92
13914.00	90.830	147.430	7755.57	6135.20	-5265.27	3149.23	1712628.05	402574.33	39°36'2.9595"N	80°31'11.5446"W	6135.21	149.116	0.46	-0.36	-0.29
14009.00	90.370	147.580	7754.57	6230.16	-5345.40	3200.27	1712679.08	402494.21	39°36'2.1734"N	80°31'10.8810"W	6230.17	149.091	0.51	-0.48	0.16
14104.00	90.950	148.660	7753.48	6325.14	-5426.06	3250.44	1712729.25	402413.55	39°36'1.3819"N	80°31'10.2285"W	6325.14	149.077	1.29	0.61	1.14
14199.00	90.250	145.530	7752.48	6420.07	-5505.80	3302.03	1712780.84	402333.81	39°36'0.5996"N	80°31'9.5578"W	6420.07	149.047	3.38	-0.74	-3.29
14295.00	91.020	147.940	7751.42	6515.98	-5586.06	3354.68	1712833.49	402253.56	39°35'59.8123"N	80°31'8.8736"W	6515.98	149.013	2.64	0.80	2.51

RECEIVED
 Department of
 Environmental Protection
 JUL 31 2023
 Division of Oil and Gas



Actual Wellpath Report

Michael Kuhn 8H AWP Proj: 25409'
Page 7 of 12



REFERENCE WELLPATH IDENTIFICATION			
Operator	EQT PRODUCTION COMPANY	Well	Michael Kuhn 8H (L-003950)
Field	Wetzel	API/Legal	
Facility	Big 467 Pad	Wellbore	Michael Kuhn 8H AWB
Slot	Slot 8H		

WELLPATH DATA (266 stations)															
MD [ft]	Inclination [°]	Azimuth [°]	TVD [ft]	Vert Sect [ft]	North [ft]	East [ft]	Grid East [US ft]	Grid North [US ft]	Latitude	Longitude	Closure Dist [ft]	Closure Dir [°]	DLS [°/100ft]	Build Rate [°/100ft]	Turn Rate [°/100ft]
14485.00	89.510	146.250	7750.54	6705.86	-5745.57	3457.89	1712936.69	402094.06	39°35'58.2476"N	80°31'7.5320"W	6705.86	148.959	1.19	-0.79	-0.89
14580.00	91.850	149.420	7749.41	6800.82	-5825.97	3508.45	1712987.25	402013.67	39°35'57.4587"N	80°31'6.8745"W	6800.82	148.943	4.15	2.46	3.34
14675.00	90.680	147.530	7747.31	6895.78	-5906.92	3558.11	1713036.90	401932.72	39°35'56.6642"N	80°31'6.2285"W	6895.79	148.937	2.34	-1.23	-1.99
14770.00	91.110	147.250	7745.83	6990.73	-5986.93	3609.30	1713088.09	401852.71	39°35'55.8792"N	80°31'5.5630"W	6990.74	148.916	0.54	0.45	-0.29
14865.00	90.650	147.610	7744.37	7085.69	-6066.98	3660.44	1713139.22	401772.67	39°35'55.0938"N	80°31'4.8982"W	7085.70	148.896	0.61	-0.48	0.38
14959.00	90.680	147.770	7743.28	7179.65	-6146.43	3710.68	1713189.46	401693.23	39°35'54.3144"N	80°31'4.2449"W	7179.67	148.880	0.17	0.03	0.17
15055.00	90.090	147.610	7742.63	7275.63	-6227.56	3761.99	1713240.77	401612.10	39°35'53.5183"N	80°31'3.5777"W	7275.65	148.864	0.64	-0.61	-0.17
15149.00	90.430	148.100	7742.21	7369.61	-6307.15	3812.00	1713290.78	401532.52	39°35'52.7374"N	80°31'2.9274"W	7369.63	148.851	0.63	0.36	0.52
15244.00	90.950	147.520	7741.06	7464.58	-6387.54	3862.61	1713341.38	401452.13	39°35'51.9486"N	80°31'2.2693"W	7464.61	148.838	0.82	0.55	-0.61
15339.00	90.990	146.980	7739.46	7559.52	-6467.43	3913.99	1713392.76	401372.25	39°35'51.1648"N	80°31'1.6014"W	7559.56	148.818	0.57	0.04	-0.57
15434.00	91.480	150.640	7737.41	7654.48	-6548.66	3963.17	1713441.94	401291.02	39°35'50.3675"N	80°31'0.9614"W	7654.52	148.818	3.89	0.52	3.85
15529.00	91.510	148.280	7734.93	7749.44	-6630.45	4011.42	1713490.19	401209.24	39°35'49.5647"N	80°31'0.3332"W	7749.48	148.826	2.48	0.03	-2.48
15624.00	91.510	149.860	7732.42	7844.40	-6711.91	4060.23	1713539.00	401127.78	39°35'48.7651"N	80°30'59.6979"W	7844.44	148.829	1.66	0.00	1.66
15719.00	91.970	149.870	7729.54	7939.35	-6794.03	4107.91	1713586.66	401045.67	39°35'47.9588"N	80°30'59.0771"W	7939.38	148.841	0.48	0.48	0.01
15814.00	91.290	149.200	7726.84	8034.30	-6875.88	4156.05	1713634.81	400963.82	39°35'47.1553"N	80°30'58.4503"W	8034.33	148.850	1.00	-0.72	-0.71
15909.00	92.120	149.980	7724.01	8129.26	-6957.77	4204.12	1713682.87	400881.93	39°35'46.3514"N	80°30'57.8245"W	8129.28	148.858	1.20	0.87	0.82
16004.00	90.740	150.170	7721.64	8224.21	-7040.08	4251.49	1713730.24	400799.63	39°35'45.5433"N	80°30'57.2075"W	8224.23	148.872	1.47	-1.45	0.20
16098.00	91.880	150.420	7719.49	8318.16	-7121.70	4298.06	1713776.81	400718.01	39°35'44.7418"N	80°30'56.6008"W	8318.17	148.888	1.24	1.21	0.27
16194.00	91.850	149.930	7716.37	8414.09	-7204.94	4345.78	1713824.53	400634.78	39°35'43.9245"N	80°30'55.9793"W	8414.10	148.903	0.51	-0.03	-0.51
16288.00	91.480	149.990	7713.64	8508.03	-7286.28	4392.82	1713871.56	400553.44	39°35'43.1260"N	80°30'55.3667"W	8508.04	148.915	0.40	-0.39	0.06
16383.00	91.230	150.400	7711.39	8602.99	-7368.69	4440.02	1713918.76	400471.04	39°35'42.3168"N	80°30'54.7518"W	8602.99	148.929	0.51	-0.26	0.43
16478.00	90.060	149.050	7710.32	8697.97	-7450.73	4487.91	1713966.65	400389.01	39°35'41.5114"N	80°30'54.1283"W	8697.97	148.938	1.88	-1.23	-1.42
16573.00	91.540	149.220	7708.99	8792.96	-7532.26	4536.64	1714015.38	400307.48	39°35'40.7111"N	80°30'53.4940"W	8792.96	148.940	1.57	1.56	0.18
16668.00	90.550	149.600	7707.26	8887.94	-7614.03	4584.98	1714063.71	400225.72	39°35'39.9085"N	80°30'52.8648"W	8887.94	148.945	1.12	-1.04	0.40
16763.00	90.120	147.420	7706.71	8982.93	-7695.03	4634.60	1714113.33	400144.72	39°35'39.1135"N	80°30'52.2194"W	8982.93	148.940	2.34	-0.45	-2.29
16858.00	92.620	150.510	7704.43	9077.88	-7776.39	4683.56	1714162.28	400063.36	39°35'38.3149"N	80°30'51.5823"W	9077.88	148.940	4.18	2.63	3.25
16953.00	89.510	148.390	7702.67	9172.84	-7858.18	4731.83	1714210.55	399981.59	39°35'37.5120"N	80°30'50.9539"W	9172.85	148.946	3.96	-3.27	-2.23
17048.00	91.540	149.740	7701.80	9267.83	-7939.65	4780.66	1714259.37	399900.11	39°35'36.7123"N	80°30'50.3185"W	9267.84	148.947	2.57	2.14	1.42
17143.00	89.970	148.480	7700.55	9362.82	-8021.17	4829.42	1714308.14	399818.61	39°35'35.9122"N	80°30'49.6838"W	9362.82	148.948	2.12	-1.65	-1.33
17238.00	90.580	150.870	7700.09	9457.80	-8103.16	4877.38	1714356.10	399736.62	39°35'35.1072"N	80°30'49.0594"W	9457.81	148.956	2.60	0.64	2.52

RECEIVED
 Office of Oil and Gas
 JUL 31 2013
 Environmental Protection
 Department of



Actual Wellpath Report

Michael Kuhn 8H AWP Proj: 25409'
Page 8 of 12



REFERENCE WELLPATH IDENTIFICATION			
Operator	EQT PRODUCTION COMPANY	Well	Michael Kuhn 8H (L-003950)
Field	Wetzel	API/Legal	
Facility	Big 467 Pad	Wellbore	Michael Kuhn 8H AWB
Slot	Slot 8H		

WELLPATH DATA (266 stations)																
MD [ft]	Inclination [°]	Azimuth [°]	TVD [ft]	Vert Sect [ft]	North [ft]	East [ft]	Grid East [US ft]	Grid North [US ft]	Latitude	Longitude	Closure Dist [ft]	Closure Dir [°]	DLS [°/100ft]	Build Rate [°/100ft]	Turn Rate [°/100ft]	
17332.00	91.450	150.580	7698.43	9551.74	-8185.14	4923.34	1714402.05	399654.64	39°35'34.3021"N	80°30'48.4606"W	9551.75	148.973	0.98	0.93	-0.31	
17427.00	90.370	148.380	7696.92	9646.72	-8266.96	4971.58	1714450.28	399572.82	39°35'33.4989"N	80°30'47.8327"W	9646.72	148.978	2.58	-1.14	-2.32	
17522.00	91.690	149.370	7695.21	9741.70	-8348.27	5020.68	1714499.38	399491.52	39°35'32.7009"N	80°30'47.1938"W	9741.70	148.977	1.74	1.39	1.04	
17616.00	91.200	150.580	7692.84	9835.66	-8429.63	5067.69	1714546.39	399410.17	39°35'31.9021"N	80°30'46.5816"W	9835.66	148.987	1.39	-0.52	1.29	
17711.00	91.260	150.530	7690.80	9930.60	-8512.34	5114.38	1714593.08	399327.46	39°35'31.0899"N	80°30'45.9733"W	9930.60	149.002	0.08	0.06	-0.05	
17805.00	89.970	149.970	7689.79	10024.57	-8593.94	5161.03	1714639.72	399245.86	39°35'30.2886"N	80°30'45.3658"W	10024.57	149.013	1.50	-1.37	-0.60	
17900.00	90.000	148.270	7689.81	10119.57	-8675.47	5209.78	1714688.47	399164.34	39°35'29.4883"N	80°30'44.7313"W	10119.57	149.014	1.79	0.03	-1.79	
17995.00	90.920	149.090	7689.05	10214.56	-8756.62	5259.16	1714737.85	399083.19	39°35'28.6918"N	80°30'44.0889"W	10214.56	149.011	1.30	0.97	0.86	
18090.00	90.060	147.940	7688.24	10309.55	-8837.63	5308.77	1714787.46	399002.19	39°35'27.8968"N	80°30'43.4436"W	10309.55	149.007	1.51	-0.91	-1.21	
18185.00	90.920	148.940	7687.43	10404.54	-8918.58	5358.49	1714837.18	398921.25	39°35'27.1024"N	80°30'42.7969"W	10404.54	149.002	1.39	0.91	1.05	
18280.00	91.450	148.570	7685.46	10499.52	-8999.78	5407.76	1714886.44	398840.05	39°35'26.3054"N	80°30'42.1560"W	10499.52	148.999	0.68	0.56	-0.39	
18375.00	91.390	148.750	7683.11	10594.49	-9080.89	5457.16	1714935.83	398758.94	39°35'25.5093"N	80°30'41.5134"W	10594.49	148.996	0.20	-0.06	0.19	
18470.00	90.920	148.660	7681.19	10689.47	-9162.06	5506.49	1714985.17	398677.79	39°35'24.7127"N	80°30'40.8715"W	10689.47	148.994	0.50	-0.49	-0.09	
18565.00	90.550	148.460	7679.97	10784.46	-9243.10	5556.04	1715034.71	398596.74	39°35'23.9172"N	80°30'40.2270"W	10784.46	148.990	0.44	-0.39	-0.21	
18661.00	90.740	148.660	7678.89	10880.45	-9325.00	5606.11	1715084.78	398514.86	39°35'23.1134"N	80°30'39.5757"W	10880.45	148.986	0.29	0.20	0.21	
18756.00	90.460	148.130	7677.90	10975.44	-9405.91	5655.89	1715134.56	398433.95	39°35'22.3194"N	80°30'38.9283"W	10975.44	148.981	0.63	-0.29	-0.56	
18851.00	91.350	149.240	7676.40	11070.42	-9487.06	5705.26	1715183.92	398352.81	39°35'21.5229"N	80°30'38.2861"W	11070.42	148.978	1.50	0.94	1.17	
18944.00	89.820	148.720	7675.45	11163.41	-9566.75	5753.18	1715231.84	398273.12	39°35'20.7407"N	80°30'37.6625"W	11163.41	148.978	1.74	-1.65	-0.56	
19039.00	90.340	148.060	7675.32	11258.41	-9647.65	5802.98	1715281.63	398192.22	39°35'19.9467"N	80°30'37.0150"W	11258.41	148.973	0.88	0.55	-0.69	
19134.00	90.400	148.240	7674.70	11353.39	-9728.35	5853.11	1715331.76	398111.53	39°35'19.1548"N	80°30'36.3631"W	11353.40	148.967	0.20	0.06	0.19	
19229.00	89.780	148.980	7674.55	11448.39	-9809.44	5902.59	1715381.24	398030.44	39°35'18.3588"N	80°30'35.7195"W	11448.39	148.964	1.02	-0.65	0.78	
19325.00	90.150	148.900	7674.61	11544.39	-9891.68	5952.12	1715430.76	397948.21	39°35'17.5516"N	80°30'35.0751"W	11544.39	148.963	0.39	0.39	-0.08	
19419.00	89.540	146.880	7674.87	11638.37	-9971.29	6002.08	1715480.72	397868.60	39°35'16.7704"N	80°30'34.4255"W	11638.37	148.955	2.24	-0.65	-2.15	
19514.00	90.800	149.710	7674.58	11733.35	-10052.11	6052.00	1715530.64	397787.79	39°35'15.9773"N	80°30'33.7763"W	11733.35	148.949	3.26	1.33	2.98	
19610.00	90.770	149.870	7673.27	11829.33	-10135.06	6100.30	1715578.94	397704.84	39°35'15.1629"N	80°30'33.1475"W	11829.33	148.956	0.17	-0.03	0.17	
19705.00	89.910	148.620	7672.71	11924.32	-10216.70	6148.88	1715627.51	397623.21	39°35'14.3615"N	80°30'32.5154"W	11924.33	148.959	1.60	-0.91	-1.32	
19800.00	90.490	148.660	7672.37	12019.32	-10297.82	6198.32	1715676.95	397542.09	39°35'13.5653"N	80°30'31.8723"W	12019.33	148.956	0.61	0.61	0.04	
19895.00	90.800	149.760	7671.30	12114.31	-10379.42	6246.94	1715725.57	397460.49	39°35'12.7642"N	80°30'31.2396"W	12114.32	148.958	1.20	0.33	1.16	
19990.00	90.030	148.740	7670.62	12209.31	-10461.06	6295.51	1715774.14	397378.86	39°35'11.9628"N	80°30'30.6075"W	12209.31	148.960	1.35	-0.81	-1.07	
20084.00	90.060	149.270	7670.54	12303.31	-10541.64	6343.92	1715822.54	397298.29	39°35'11.1719"N	80°30'29.9777"W	12303.31	148.961	0.56	0.03	0.56	

RECEIVED
Office of Oil and Gas
Department of
Environmental Protection
JUL 31 2023



Actual Wellpath Report

Michael Kuhn 8H AWP Proj: 25409'
Page 9 of 12



REFERENCE WELLPATH IDENTIFICATION			
Operator	EQT PRODUCTION COMPANY	Well	Michael Kuhn 8H (L-003950)
Field	Wetzel	API/Legal	
Facility	Big 467 Pad	Wellbore	Michael Kuhn 8H AWB
Slot	Slot 8H		

WELLPATH DATA (266 stations)																
MD [ft]	Inclination [°]	Azimuth [°]	TVD [ft]	Vert Sect [ft]	North [ft]	East [ft]	Grid East [US ft]	Grid North [US ft]	Latitude	Longitude	Closure Dist [ft]	Closure Dir [°]	DLS [°/100ft]	Build Rate [°/100ft]	Turn Rate [°/100ft]	
20179.00	90.550	149.450	7670.04	12398.30	-10623.37	6392.34	1715870.95	397216.56	39°35'10.3695"N	80°30'29.3477"W	12398.31	148.964	0.55	0.52	0.19	
20274.00	88.680	149.560	7670.68	12493.29	-10705.23	6440.54	1715919.16	397134.71	39°35'9.5659"N	80°30'28.7203"W	12493.30	148.968	1.97	-1.97	0.12	
20369.00	90.120	148.850	7671.67	12588.29	-10786.83	6489.17	1715967.79	397053.12	39°35'8.7649"N	80°30'28.0875"W	12588.29	148.970	1.69	1.52	-0.75	
20464.00	89.290	149.030	7672.16	12683.28	-10868.20	6538.19	1716016.80	396971.74	39°35'7.9661"N	80°30'27.4498"W	12683.29	148.969	0.89	-0.87	0.19	
20560.00	87.630	148.580	7674.74	12779.24	-10950.29	6587.89	1716066.50	396889.66	39°35'7.1604"N	80°30'26.8033"W	12779.25	148.968	1.79	-1.73	-0.47	
20655.00	88.250	148.380	7678.15	12874.18	-11031.22	6637.52	1716116.13	396808.74	39°35'6.3661"N	80°30'26.1578"W	12874.18	148.965	0.69	0.65	-0.21	
20750.00	88.580	150.360	7680.78	12969.14	-11112.93	6685.90	1716164.50	396727.03	39°35'5.5639"N	80°30'25.5282"W	12969.14	148.967	2.11	0.35	2.08	
20845.00	88.580	149.060	7683.14	13064.10	-11194.93	6733.80	1716212.40	396645.03	39°35'4.7588"N	80°30'24.9047"W	13064.10	148.973	1.37	0.00	-1.37	
20940.00	89.320	150.130	7684.88	13159.07	-11276.85	6781.88	1716260.47	396563.12	39°35'3.9546"N	80°30'24.2790"W	13159.07	148.977	1.37	0.76	1.13	
21035.00	89.140	149.090	7686.15	13254.06	-11358.79	6829.93	1716308.52	396481.18	39°35'3.1501"N	80°30'23.6536"W	13254.06	148.982	1.11	-0.19	-1.09	
21130.00	89.260	149.890	7687.48	13349.05	-11440.63	6878.15	1716356.74	396399.35	39°35'2.3467"N	80°30'23.0260"W	13349.05	148.986	0.85	0.13	0.84	
21225.00	89.570	150.330	7688.45	13444.02	-11522.99	6925.49	1716404.08	396317.00	39°35'1.5380"N	80°30'22.4096"W	13444.02	148.993	0.57	0.33	0.46	
21320.00	89.170	149.060	7689.49	13539.01	-11605.00	6973.43	1716452.01	396234.99	39°35'0.7328"N	80°30'21.7857"W	13539.01	148.998	1.40	-0.42	-1.34	
21415.00	89.290	149.000	7690.77	13634.00	-11686.45	7022.31	1716500.89	396153.55	39°34'59.9333"N	80°30'21.1498"W	13634.00	148.999	0.14	0.13	-0.06	
21510.00	89.170	149.530	7692.05	13728.99	-11768.10	7070.86	1716549.43	396071.90	39°34'59.1318"N	80°30'20.5181"W	13728.99	149.000	0.57	-0.13	0.56	
21606.00	89.940	150.030	7692.79	13824.98	-11851.05	7119.17	1716597.75	395988.96	39°34'58.3174"N	80°30'19.8892"W	13824.98	149.006	0.96	0.80	0.52	
21701.00	88.250	148.380	7694.29	13919.96	-11932.64	7167.80	1716646.37	395907.37	39°34'57.5164"N	80°30'19.2585"W	13919.96	149.007	2.49	-1.78	-1.74	
21797.00	88.000	150.130	7697.44	14015.90	-12015.10	7216.85	1716695.42	395824.92	39°34'56.7069"N	80°30'18.6183"W	14015.90	149.009	1.84	-0.26	1.82	
21891.00	86.740	149.710	7701.75	14109.79	-12096.35	7263.91	1716742.48	395743.67	39°34'55.9092"N	80°30'18.0057"W	14109.79	149.015	1.41	-1.34	-0.45	
21987.00	88.370	148.610	7705.84	14205.89	-12178.70	7313.08	1716791.64	395661.33	39°34'55.1008"N	80°30'17.3660"W	14205.70	149.016	2.05	1.70	-1.15	
22082.00	88.150	148.800	7708.73	14300.65	-12259.84	7362.40	1716840.96	395580.19	39°34'54.3044"N	80°30'16.7245"W	14300.65	149.014	0.31	-0.23	0.20	
22177.00	88.740	149.520	7711.31	14395.61	-12341.37	7411.09	1716889.64	395498.66	39°34'53.5040"N	80°30'16.0911"W	14395.61	149.015	0.98	0.62	0.76	
22272.00	86.710	149.300	7715.08	14490.53	-12423.08	7459.39	1716937.94	395416.96	39°34'52.7018"N	80°30'15.4626"W	14490.53	149.017	2.15	-2.14	-0.23	
22367.00	88.180	148.990	7719.31	14585.43	-12504.55	7508.06	1716986.61	395335.49	39°34'51.9020"N	80°30'14.8294"W	14585.43	149.018	1.58	1.55	-0.33	
22462.00	87.940	150.120	7722.53	14680.37	-12586.41	7556.17	1717034.72	395253.64	39°34'51.0984"N	80°30'14.2033"W	14680.37	149.022	1.22	-0.25	1.19	
22557.00	86.860	149.850	7726.84	14775.26	-12668.58	7603.64	1717082.19	395171.47	39°34'50.2916"N	80°30'13.5853"W	14775.26	149.028	1.17	-1.14	-0.28	
22651.00	87.910	149.300	7731.13	14869.16	-12749.55	7651.20	1717129.74	395090.51	39°34'49.4966"N	80°30'12.9665"W	14869.16	149.031	1.26	1.12	-0.59	
22746.00	87.510	150.100	7734.92	14964.07	-12831.51	7699.09	1717177.63	395008.56	39°34'48.6920"N	80°30'12.3432"W	14964.07	149.036	0.94	-0.42	0.84	
22841.00	86.950	148.620	7739.51	15058.96	-12913.15	7747.44	1717225.98	394926.92	39°34'47.8905"N	80°30'11.7140"W	15058.96	149.038	1.66	-0.59	-1.56	
23032.00	86.520	149.550	7750.39	15249.64	-13076.74	7845.41	1717323.94	394763.34	39°34'46.2846"N	80°30'10.4395"W	15249.65	149.038	0.54	-0.23	0.49	

RECEIVED
Office of Oil and Gas
Department of
Environmental Protection
JUL 31 2023



Actual Wellpath Report

Michael Kuhn 8H AWP Proj: 25409'

Page 10 of 12



REFERENCE WELLPATH IDENTIFICATION			
Operator	EQT PRODUCTION COMPANY	Well	Michael Kuhn 8H (L-003950)
Field	Wetzel	API/Legal	
Facility	Big 467 Pad	Wellbore	Michael Kuhn 8H AWB
Slot	Slot 8H		

WELLPATH DATA (266 stations) † = interpolated, ‡ = extrapolated station

MD [ft]	Inclination [°]	Azimuth [°]	TVD [ft]	Vert Sect [ft]	North [ft]	East [ft]	Grid East [US ft]	Grid North [US ft]	Latitude	Longitude	Closure Dist [ft]	Closure Dir [°]	DLS [°/100ft]	Build Rate [°/100ft]	Turn Rate [°/100ft]
23127.00	86.830	148.000	7755.90	15344.48	-13157.84	7894.58	1717373.10	394682.24	39°34'45.4885"N	80°30'9.8001"W	15344.48	149.037	1.66	0.33	-1.63
23222.00	87.320	149.380	7760.75	15439.35	-13238.90	7943.88	1717422.40	394601.19	39°34'44.6929"N	80°30'9.1590"W	15439.35	149.035	1.54	0.52	1.45
23317.00	87.350	149.800	7765.17	15534.24	-13320.74	7991.91	1717470.44	394519.36	39°34'43.8894"N	80°30'8.5339"W	15534.25	149.038	0.44	0.03	0.44
23412.00	87.110	147.370	7769.76	15629.12	-13401.71	8041.37	1717519.89	394438.39	39°34'43.0946"N	80°30'7.8908"W	15629.13	149.035	2.57	-0.25	-2.56
23506.00	87.230	148.810	7774.40	15722.99	-13481.41	8091.00	1717569.51	394358.70	39°34'42.3125"N	80°30'7.2457"W	15723.00	149.030	1.54	0.13	1.53
23602.00	85.930	148.280	7780.13	15818.82	-13563.15	8141.00	1717619.51	394276.96	39°34'41.5101"N	80°30'6.5955"W	15818.82	149.027	1.46	-1.35	-0.55
23696.00	85.010	150.550	7787.55	15912.51	-13643.82	8188.68	1717667.19	394196.30	39°34'40.7182"N	80°30'5.9751"W	15912.52	149.029	2.60	-0.98	2.41
23792.00	84.260	147.640	7796.53	16008.08	-13725.82	8237.76	1717716.27	394114.30	39°34'39.9133"N	80°30'5.3366"W	16008.08	149.029	3.12	-0.78	-3.03
23887.00	83.560	147.770	7806.61	16102.52	-13805.67	8288.23	1717766.73	394034.46	39°34'39.1297"N	80°30'4.6808"W	16102.52	149.022	0.75	-0.74	0.14
23981.00	84.480	147.270	7816.40	16195.98	-13884.53	8338.43	1717816.93	393955.60	39°34'38.3558"N	80°30'4.0284"W	16195.98	149.013	1.11	0.98	-0.53
24076.00	83.520	147.770	7826.33	16290.42	-13964.23	8389.17	1717867.67	393875.90	39°34'37.5738"N	80°30'3.3692"W	16290.42	149.004	1.14	-1.01	0.53
24171.00	85.040	148.640	7835.80	16384.94	-14044.57	8438.97	1717917.46	393795.57	39°34'36.7853"N	80°30'2.7218"W	16384.94	149.000	1.84	1.60	0.92
24266.00	85.590	148.980	7843.56	16479.62	-14125.57	8488.01	1717966.50	393714.58	39°34'35.9903"N	80°30'2.0841"W	16479.62	148.998	0.68	0.58	0.36
24361.00	85.220	148.240	7851.17	16574.31	-14206.40	8537.33	1718015.81	393633.75	39°34'35.1968"N	80°30'1.4428"W	16574.31	148.996	0.87	-0.39	-0.78
24456.00	85.320	149.410	7859.00	16668.99	-14287.40	8586.34	1718064.82	393552.75	39°34'34.4017"N	80°30'0.8054"W	16668.99	148.995	1.23	0.11	1.23
24550.00	85.010	148.810	7866.93	16762.65	-14367.78	8634.42	1718112.90	393472.38	39°34'33.6126"N	80°30'0.1799"W	16762.65	148.996	0.72	-0.33	-0.64
24645.00	85.660	147.980	7874.65	16857.33	-14448.42	8684.04	1718162.52	393391.74	39°34'32.8212"N	80°29'59.5348"W	16857.33	148.993	1.11	0.68	-0.87
24740.00	87.010	149.380	7880.73	16952.13	-14529.41	8733.32	1718211.80	393310.76	39°34'32.0262"N	80°29'58.8940"W	16952.13	148.991	2.05	1.42	1.47
24835.00	87.780	149.680	7885.04	17047.03	-14611.20	8781.44	1718259.92	393228.97	39°34'31.2232"N	80°29'58.2679"W	17047.03	148.994	0.87	0.81	0.32
24930.00	85.810	148.440	7890.36	17141.87	-14692.55	8830.21	1718308.68	393147.63	39°34'30.4246"N	80°29'57.6337"W	17141.87	148.994	2.45	-2.07	-1.31
25025.00	85.660	150.070	7897.42	17236.60	-14773.97	8878.64	1718357.10	393066.21	39°34'29.6253"N	80°29'57.0037"W	17236.60	148.996	1.72	-0.16	1.72
25120.00	84.700	149.420	7905.40	17331.26	-14855.74	8926.33	1718404.80	392984.45	39°34'28.8224"N	80°29'56.3830"W	17331.26	149.000	1.22	-1.01	-0.68
25215.00	85.010	149.740	7913.92	17425.87	-14937.33	8974.24	1718452.70	392902.86	39°34'28.0213"N	80°29'55.7596"W	17425.87	149.003	0.47	0.33	0.34
25310.00	86.090	149.280	7921.29	17520.58	-15018.95	9022.30	1718500.75	392821.25	39°34'27.2201"N	80°29'55.1344"W	17520.58	149.006	1.24	1.14	-0.48
25384.00	90.150	149.150	7923.72	17594.52	-15082.47	9060.14	1718538.60	392757.73	39°34'26.5964"N	80°29'54.6421"W	17594.52	149.006	5.49	5.49	-0.18
25409.00‡	90.150	149.150	7923.66	17619.52	-15103.94	9072.96	1718551.42	392736.27	39°34'26.3857"N	80°29'54.4754"W	17619.52	149.007	0.00	0.00	0.00

RECEIVED
 Office of Oil and Gas
 JUL 31 2023
 WV Department of
 Environmental Protection



Actual Wellpath Report

Michael Kuhn 8H AWP Proj: 25409'

Page 11 of 12



REFERENCE WELLPATH IDENTIFICATION			
Operator	EQT PRODUCTION COMPANY	Well	Michael Kuhn 8H (L-003950)
Field	Wetzel	API/Legal	
Facility	Big 467 Pad	Wellbore	Michael Kuhn 8H AWB
Slot	Slot 8H		

HOLE & CASING SECTIONS - Ref Wellbore: Michael Kuhn 8H AWB Ref Wellpath: Michael Kuhn 8H AWP Proj: 25409'									
String/Diameter	Start MD [ft]	End MD [ft]	Interval [ft]	Start TVD [ft]	End TVD [ft]	Start N/S [ft]	Start E/W [ft]	End N/S [ft]	End E/W [ft]
17.5in Open Hole	28.00	1355.00	1327.00	28.00	1355.00	0.00	0.00	1.99	-1.68
13.375in Casing Surface	28.00	1355.00	1327.00	28.00	1355.00	0.00	0.00	1.99	-1.68
12.25in Open Hole	1355.00	2860.00	1505.00	1355.00	2858.87	1.99	-1.68	46.98	24.55
9.625in Casing Intermediate	28.00	2860.00	2832.00	28.00	2858.87	0.00	0.00	46.98	24.55
8.75in Open Hole	2860.00	6812.00	3952.00	2858.87	6801.09	46.98	24.55	142.83	-226.71
8.5in Open Hole	6812.00	25409.00	18597.00	6801.09	7923.66	142.83	-226.71	-15103.94	9072.96
5.5in Casing Production	28.00	25379.00	25351.00	28.00	7923.72	0.00	0.00	-15078.18	9057.58

TARGETS								
Name	TVD [ft]	North [ft]	East [ft]	Grid East [US ft]	Grid North [US ft]	Latitude	Longitude	Shape
Michael Kuhn 8H LP Rev-2	7735.00	-293.61	155.01	1709634.01	407545.69	39°36'51.7544"N	80°31'50.5226"W	point
Michael Kuhn 8H BHL Rev-2	7885.90	-15102.65	9075.57	1718554.02	392737.56	39°34'26.3987"N	80°29'54.4423"W	point
Michael Kuhn Hardline 1	9000.00	-656.42	-1822.38	1707656.74	407182.91	39°36'47.9440"N	80°32'15.7340"W	polygon
	2D Polygon: dimensions not calculated							
Michael Kuhn Hardline 2	9000.00	-11660.20	11268.51	1720746.83	396179.79	39°35'0.6591"N	80°29'26.9243"W	point
Michael Kuhn Hardline 3	9000.00	-14802.31	9828.58	1719306.99	393037.88	39°34'29.4495"N	80°29'44.8692"W	polygon
	2D Polygon: dimensions not calculated							
Michael Kuhn Hardline 4	9000.00	-15205.66	8904.13	1718382.59	392634.55	39°34'25.3618"N	80°29'56.6168"W	polygon
	2D Polygon: dimensions not calculated							
Michael Kuhn Hardline 5	9000.00	-16780.96	8684.07	1718162.55	391059.35	39°34'9.7696"N	80°29'59.2029"W	polygon
	2D Polygon: dimensions not calculated							
Michael Kuhn Hardline 6	9000.00	-18067.17	7567.96	1717046.50	389773.22	39°33'56.9355"N	80°30'13.2708"W	polygon
	2D Polygon: dimensions not calculated							

RECEIVED
 Office of Oil and Gas
 WV Department of Environmental Protection
 JUL 31 2023

TARGETS								
Name	TVD [ft]	North [ft]	East [ft]	Grid East [US ft]	Grid North [US ft]	Latitude	Longitude	Shape
Michael Kuhn L&A 1	9000.00	-1935.57	300.28	1709779.27	405903.83	39°36'35.5441"N	80°31'48.4260"W	polygon
	2D Polygon: dimensions not calculated							
Michael Kuhn L&A 2	9000.00	-14499.62	9742.98	1719221.39	393340.54	39°34'32.4314"N	80°29'46.0051"W	polygon
	2D Polygon: dimensions not calculated							
Michael Kuhn L&A 3	9000.00	-9017.85	8991.66	1718470.12	398821.98	39°35'26.5231"N	80°29'56.3778"W	polygon
	2D Polygon: dimensions not calculated							
Michael Kuhn L&A 4	9000.00	-8918.41	10227.93	1719706.31	398921.42	39°35'27.6415"N	80°29'40.6015"W	polygon
	2D Polygon: dimensions not calculated							
Michael Kuhn L&A 5	9000.00	-16392.57	8843.76	1718322.23	391447.72	39°34'13.6255"N	80°29'57.2191"W	polygon
	2D Polygon: dimensions not calculated							
Michael Kuhn Temp 2	9000.00	-16881.40	7020.06	1716498.64	390958.91	39°34'8.5934"N	80°30'20.4358"W	polygon
	2D Polygon: dimensions not calculated							
Michael Kuhn Temp 3	9000.00	-2342.37	4777.64	1714256.36	405497.05	39°36'32.0274"N	80°30'51.1642"W	polygon
	2D Polygon: dimensions not calculated							
Michael Kuhn Temp 4	9000.00	-4715.18	7447.53	1716926.08	403124.39	39°36'8.8745"N	80°30'16.7149"W	polygon
	2D Polygon: dimensions not calculated							

TARGETS								
Name	TVD [ft]	North [ft]	East [ft]	Grid East [US ft]	Grid North [US ft]	Latitude	Longitude	Shape
Michael Kuhn Temp 5	9000.00	-8780.93	9013.25	1718491.71	399058.88	39°35'28.8669"N	80°29'56.1357"W	polygon
	2D Polygon: dimensions not calculated							

WELLPATH COMPOSITION - Ref Wellbore: Michael Kuhn 8H AWB Ref Wellpath: Michael Kuhn 8H AWP Proj: 25409'								
Start MD [ft]	End MD [ft]	Positional Uncertainty Model	Log Name/Comment			Wellbore	Survey Date	
28.00	1315.00	Gyrodata 2015 - CT+WIR+ALC	01_Gyro Data [CT+WIR+ALC] (115'-1315')			Michael Kuhn 8H AWB	1/21/2022	
1315.00	6737.00	OWSG MWD rev2 - Standard	02_SDI MWD [OWSG MWD Rev.2-Standard] (1315') (1415'-6737')			Michael Kuhn 8H AWB	1/21/2022	
6737.00	25409.00	OWSG MWD rev2 + IFR1 + Multi-Station Correction	03_ATK Curve [OWSG MWD Rev.2+IFR1+MS] <8.5"> (6737')(6779'-25384')			Michael Kuhn 8H AWB	1/31/2022	

RECEIVED
 Office of Oil and Gas
 WV Department of
 Environmental Protection
 JUL 31 2023



Actual Wellpath Report

Michael Kuhn 8H AWP Proj: 25409'
Page 12 of 12



REFERENCE WELLPATH IDENTIFICATION

Operator	EQT PRODUCTION COMPANY	Well	Michael Kuhn 8H (L-003950)
Field	Wetzel	API/Legal	
Facility	Big 467 Pad	Wellbore	Michael Kuhn 8H AWB
Slot	Slot 8H		

COMMENTS

Wellpath general comments

API: 47-103-03362-0000

BH Job #: 111204411

Rig: Patterson 294

Duration: 02/03/2022 - 02/10/2022

01_Gyro Data [CT+WIR+ALC] (115'-1315')

02_SDI MWD [OWSG MWD Rev.2-Standard] (1315') (1415'-6737')

03_ATK Curve [OWSG MWD Rev.2+IFR1+MS] <8.5"> (6737')(6779'-25384')

Final Survey MD at: 25384'

Projected MD at TD: 25409'

KOP = 1315' MD / 1315' TVD

Tie on to SDI MWD = 6737' MD / 6726.49' TVD

Marcellus 70°Inc = 7902.60' MD

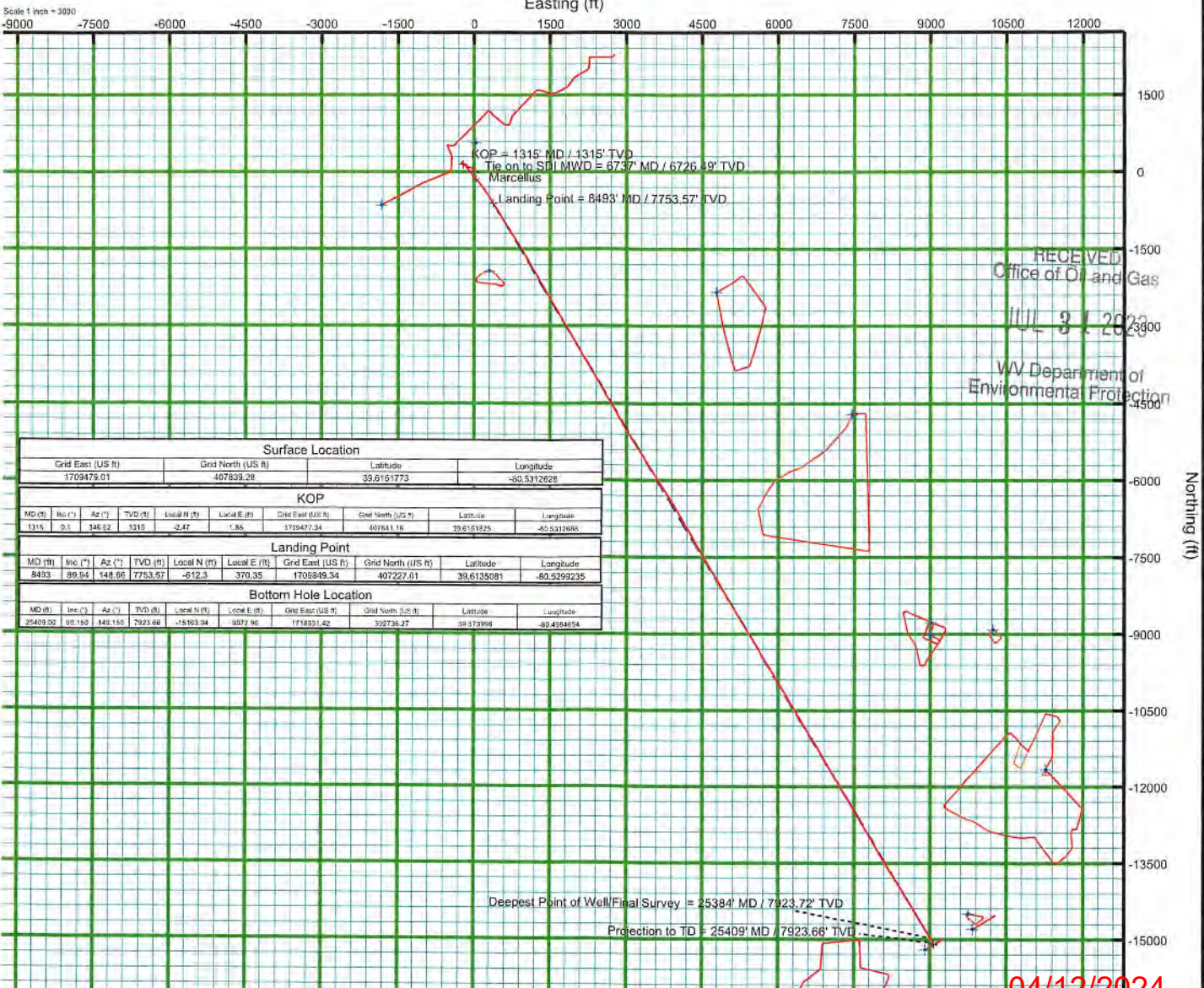
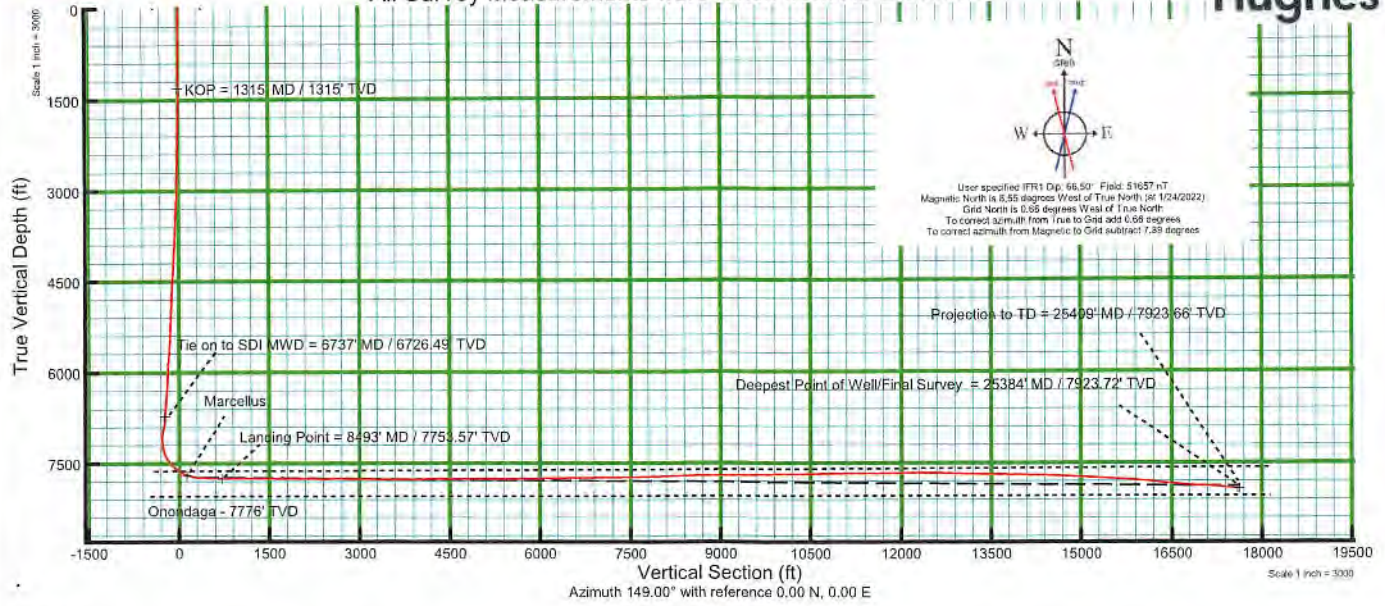
Landing Point = 8493' MD / 7753.57' TVD

Deepest Point of Well/Final Survey = 25384' MD / 7923.72' TVD

Projection to TD = 25409' MD / 7923.66' TVD



KB Elevation=1536 FT
 Ground Elevation=1508 FT
 All Survey Measurements were taken from KB Elevation



RECEIVED
 Office of Oil and Gas
 JUL 31 2023
 WV Department of
 Environmental Protection

Surface Location									
Grid East (US ft)		Grid North (US ft)		Latitude	Longitude				
1709475.01		407839.28		39.6151773	-80.5312626				
KOP									
MD (ft)	Incl. (°)	Az. (°)	TVD (ft)	Local N (ft)	Local E (ft)	Grid East (US ft)	Grid North (US ft)	Latitude	Longitude
1315	0.1	146.82	1315	-2.87	-1.85	1709477.34	407641.16	39.6151625	-80.5312688
Landing Point									
MD (ft)	Incl. (°)	Az. (°)	TVD (ft)	Local N (ft)	Local E (ft)	Grid East (US ft)	Grid North (US ft)	Latitude	Longitude
8493	89.94	148.86	7753.57	-612.3	370.35	1708849.34	407227.01	39.6135081	-80.5299235
Bottom Hole Location									
MD (ft)	Incl. (°)	Az. (°)	TVD (ft)	Local N (ft)	Local E (ft)	Grid East (US ft)	Grid North (US ft)	Latitude	Longitude
25409.00	90.160	149.160	7923.66	-15303.34	3927.96	1718531.42	392736.27	39.6139998	-80.4984634

04/12/2024