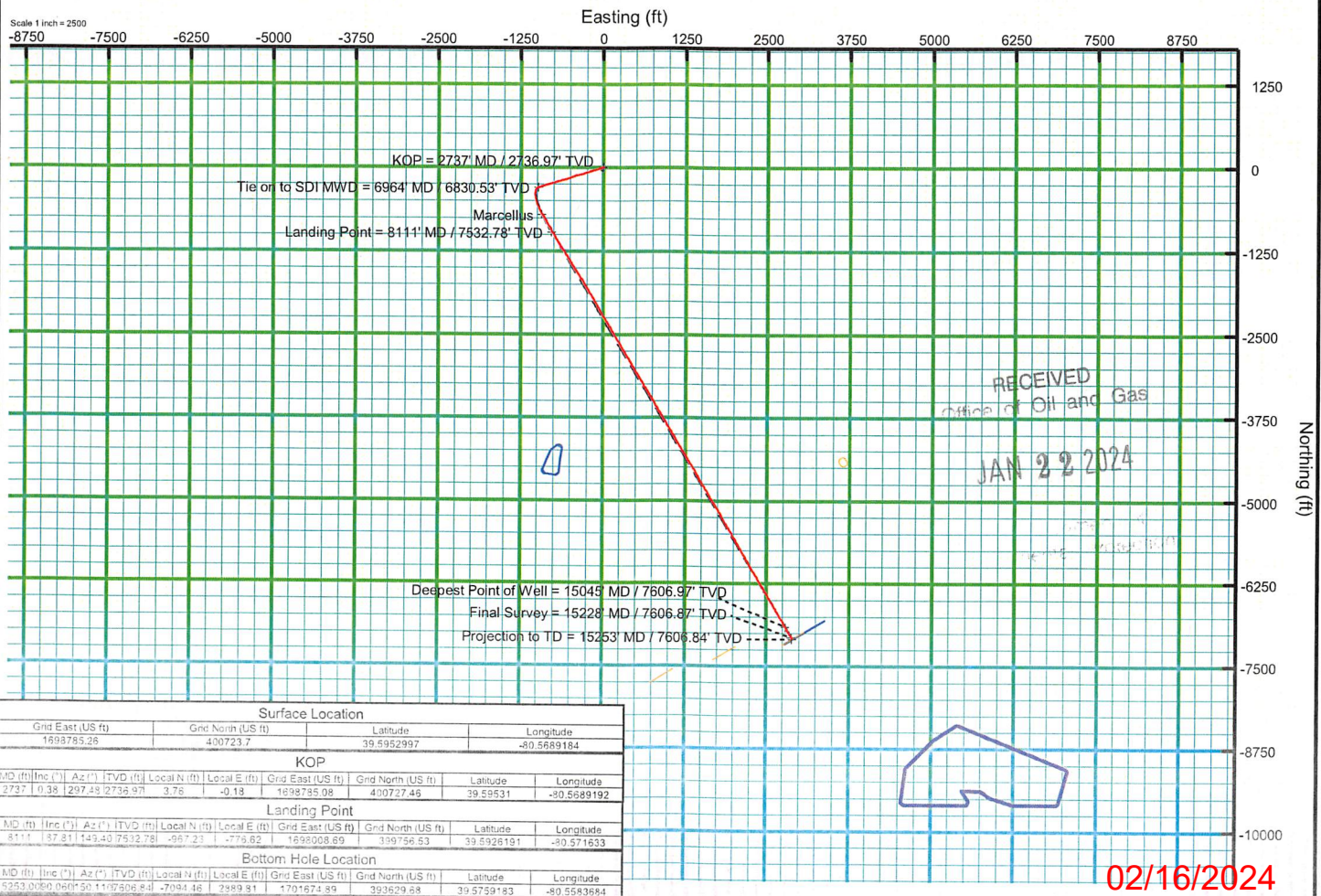
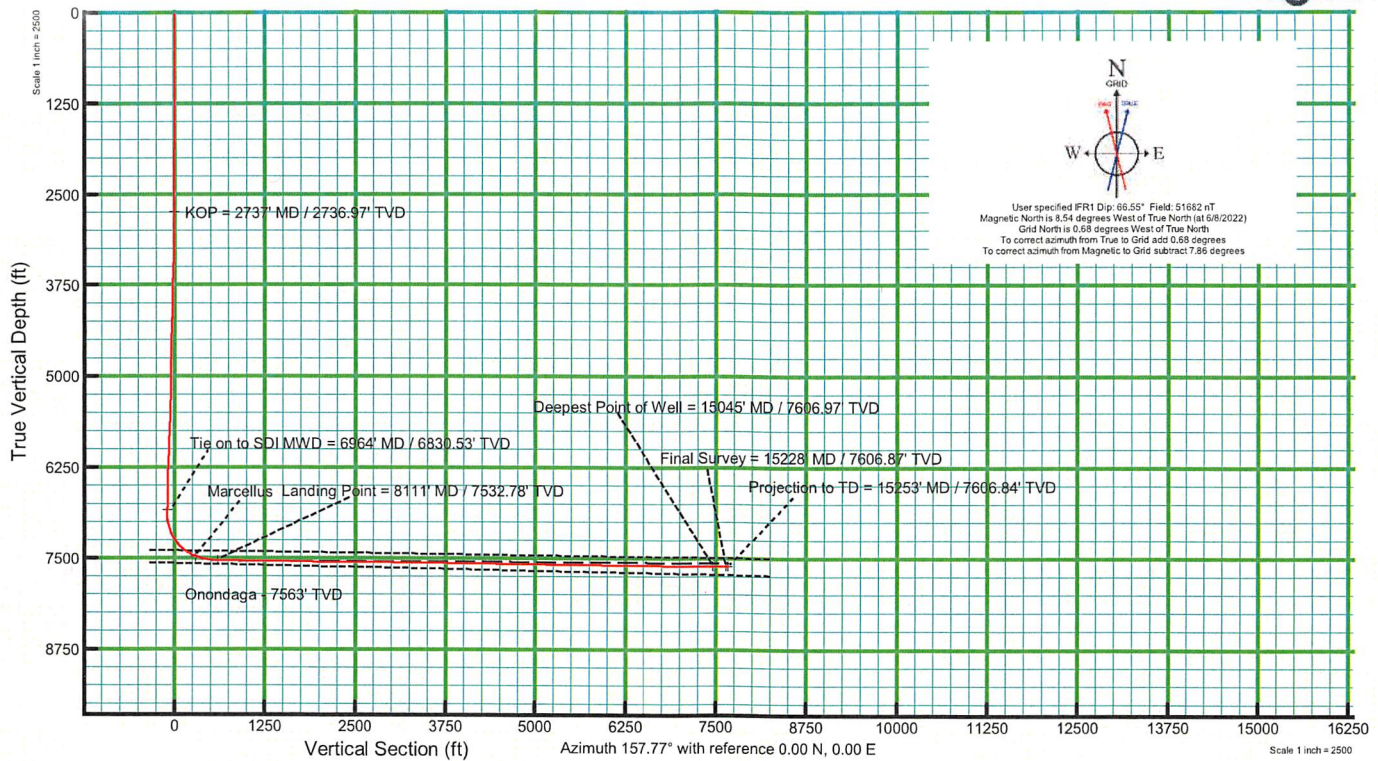




KB Elevation=1458 FT  
 Ground Elevation=1430 FT  
 All Survey Measurements were taken from KB Elevation



02/16/2024





RECEIVED  
Office of Oil and Gas

JAN 22 2024

WV Department of  
Environmental Protection

# Actual Wellpath Report

BIG 245 106H AWP Proj: 15253'

Page 1 of 9



## REFERENCE WELLPATH IDENTIFICATION

Operator	EQT PRODUCTION COMPANY	Well	BIG 245 106H (L-003509)
Field	Wetzel	API	47-103-03442-00-00
Facility	Big 245 Pad	Wellbore	BIG 245 106H AWB
Slot	Slot #106		

## REPORT SETUP INFORMATION

Projection System	NAD27 / Lambert West Virginia SP, Northern Zone (4701), US feet	Software System	WellArchitect® 6.0
North Reference	Grid	User	Manajohj
Scale	0.999941	Report Generated	6/28/2022 at 3:59:39 PM
Convergence at slot	0.68° West	Database	WA_MPL_EASTERNUS_Defn

## WELLPATH LOCATION

	Local coordinates		Grid coordinates		Geographic coordinates	
	North[ft]	East[ft]	Easting[US ft]	Northing[US ft]	Latitude	Longitude
Slot Location	0.04	-0.02	1698785.26	400723.70	39°35'43.0789"N	80°34'8.1063"W
Facility Reference Pt			1698785.28	400723.66	39°35'43.0785"N	80°34'8.1061"W
Field Reference Pt			1688243.35	385255.46	39°33'8.9436"N	80°36'20.3370"W

## WELLPATH DATUM

Calculation method	Minimum curvature	Patterson 292 (RKB) to Facility Vertical Datum	1458.00ft
Horizontal Reference Pt	Slot	Patterson 292 (RKB) to Mean Sea Level	1458.00ft
Vertical Reference Pt	Patterson 292 (RKB)	Patterson 292 (RKB) to Ground Level at Slot (Slot #106)	28.00ft
MD Reference Pt	Patterson 292 (RKB)	Section Origin	N 0.00, E 0.00 ft
Field Vertical Reference	Mean Sea Level	Section Azimuth	157.77°





RECEIVED  
Office of Oil and Gas  
JAN 22 2024

# Actual Wellpath Report

BIG 245 106H AWP Proj: 15253'

Page 2 of 9



WV Department of  
Protection

REFERENCE WELLPATH IDENTIFICATION			
Operator	EQT PRODUCTION COMPANY	Well	BIG 245 106H (L-003509)
Field	Wetzel	API	47-103-03442-00-00
Facility	Big 245 Pad	Wellbore	BIG 245 106H AWB
Slot	Slot #106		

**WELLPATH DATA (166 stations)** † = interpolated, ‡ = extrapolated station

MD [ft]	Inclination [°]	Azimuth [°]	TVD [ft]	Vert Sect [ft]	North [ft]	East [ft]	Grid East [US ft]	Grid North [US ft]	Latitude	Longitude	Closure Dist [ft]	Closure Dir [°]	DLS [°/100ft]	Build Rate [°/100ft]	Turn Rate [°/100ft]
0.00†	0.000	100.950	0.00	0.00	0.00	0.00	1698785.26	400723.70	39°35'43.0789"N	80°34'8.1063"W	0.00	0.000	0.00	0.00	0.00
28.00	0.000	100.950	28.00	0.00	0.00	0.00	1698785.26	400723.70	39°35'43.0789"N	80°34'8.1063"W	0.00	0.000	0.00	0.00	0.00
115.00	0.540	100.950	115.00	0.22	-0.08	0.40	1698785.66	400723.62	39°35'43.0782"N	80°34'8.1012"W	0.41	100.950	0.62	0.62	0.00
215.00	0.370	104.010	215.00	0.67	-0.25	1.18	1698786.44	400723.45	39°35'43.0767"N	80°34'8.0912"W	1.20	101.770	0.17	-0.17	3.06
315.00	0.280	106.180	314.99	1.02	-0.39	1.73	1698786.99	400723.31	39°35'43.0753"N	80°34'8.0842"W	1.77	102.787	0.09	-0.09	2.17
415.00	0.200	108.750	414.99	1.28	-0.52	2.13	1698787.39	400723.18	39°35'43.0741"N	80°34'8.0791"W	2.19	103.640	0.08	-0.08	2.57
515.00	0.070	148.590	514.99	1.46	-0.62	2.32	1698787.58	400723.08	39°35'43.0730"N	80°34'8.0765"W	2.41	105.039	0.15	-0.13	39.84
615.00	0.040	45.680	614.99	1.50	-0.65	2.38	1698787.64	400723.05	39°35'43.0728"N	80°34'8.0758"W	2.47	105.318	0.09	-0.03	-102.91
715.00	0.080	307.570	714.99	1.43	-0.59	2.35	1698787.61	400723.12	39°35'43.0734"N	80°34'8.0762"W	2.42	103.980	0.09	0.04	-98.11
815.00	0.190	248.470	814.99	1.37	-0.60	2.14	1698787.40	400723.10	39°35'43.0732"N	80°34'8.0789"W	2.22	105.742	0.16	0.11	-59.10
915.00	0.040	190.000	914.99	1.40	-0.70	1.98	1698787.24	400723.00	39°35'43.0723"N	80°34'8.0809"W	2.10	109.433	0.17	-0.15	-58.47
1015.00	0.070	165.800	1014.99	1.49	-0.79	1.99	1698787.25	400722.91	39°35'43.0713"N	80°34'8.0808"W	2.14	111.716	0.04	0.03	-24.20
1115.00	0.200	175.670	1114.99	1.71	-1.03	2.02	1698787.28	400722.67	39°35'43.0690"N	80°34'8.0804"W	2.26	116.946	0.13	0.13	9.87
1215.00	0.060	179.930	1214.99	1.93	-1.25	2.03	1698787.29	400722.45	39°35'43.0668"N	80°34'8.0802"W	2.39	121.655	0.14	-0.14	4.26
1315.00	0.200	312.590	1314.99	1.82	-1.19	1.90	1698787.16	400722.51	39°35'43.0674"N	80°34'8.0818"W	2.24	121.948	0.24	0.14	132.66
1415.00	0.300	330.220	1414.99	1.40	-0.84	1.64	1698786.90	400722.86	39°35'43.0708"N	80°34'8.0852"W	1.85	117.092	0.13	0.10	17.63
1515.00	0.470	345.630	1514.99	0.73	-0.22	1.41	1698786.67	400723.48	39°35'43.0770"N	80°34'8.0883"W	1.43	98.706	0.20	0.17	15.41
1615.00	0.530	339.430	1614.98	-0.13	0.61	1.15	1698786.41	400724.31	39°35'43.0851"N	80°34'8.0918"W	1.30	61.838	0.08	0.06	-6.20
1715.00	0.470	341.880	1714.98	-1.01	1.44	0.86	1698786.12	400725.14	39°35'43.0932"N	80°34'8.0956"W	1.67	30.817	0.06	-0.06	2.45
1815.00	0.460	319.240	1814.98	-1.80	2.13	0.47	1698785.73	400725.83	39°35'43.1001"N	80°34'8.1007"W	2.18	12.376	0.18	-0.01	-22.64
1915.00	0.250	354.840	1914.98	-2.38	2.65	0.19	1698785.45	400726.35	39°35'43.1052"N	80°34'8.1043"W	2.66	4.009	0.30	-0.21	35.60
2015.00	0.060	194.970	2014.98	-2.55	2.82	0.15	1698785.41	400726.52	39°35'43.1068"N	80°34'8.1048"W	2.82	3.101	0.31	-0.19	-159.87
2115.00	0.090	280.950	2114.98	-2.55	2.78	0.06	1698785.32	400726.48	39°35'43.1065"N	80°34'8.1059"W	2.78	1.278	0.10	0.03	85.98
2215.00	0.150	37.680	2214.98	-2.66	2.90	0.06	1698785.32	400726.60	39°35'43.1076"N	80°34'8.1059"W	2.90	1.283	0.21	0.06	116.73
2315.00	0.090	33.820	2314.97	-2.77	3.07	0.19	1698785.45	400726.77	39°35'43.1093"N	80°34'8.1044"W	3.08	3.517	0.06	-0.06	-3.86
2415.00	0.080	346.640	2414.97	-2.88	3.20	0.22	1698785.48	400726.90	39°35'43.1106"N	80°34'8.1040"W	3.21	3.862	0.07	-0.01	-47.18
2515.00	0.190	25.660	2514.97	-3.06	3.42	0.27	1698785.53	400727.12	39°35'43.1128"N	80°34'8.1034"W	3.43	4.545	0.14	0.11	39.02
2566.00	0.160	333.980	2565.97	-3.19	3.56	0.28	1698785.54	400727.26	39°35'43.1142"N	80°34'8.1033"W	3.57	4.453	0.30	-0.06	-101.33
2705.00	0.190	264.310	2704.97	-3.45	3.71	-0.04	1698785.22	400727.41	39°35'43.1156"N	80°34'8.1074"W	3.71	359.427	0.14	0.02	-50.12
2737.00	0.380	297.480	2736.97	-3.55	3.76	-0.18	1698785.08	400727.46	39°35'43.1160"N	80°34'8.1092"W	3.76	357.195	0.76	0.59	103.66





RECEIVED  
Office of Oil and Gas  
JAN 22 2024

# Actual Wellpath Report

BIG 245 106H AWP Proj: 15253'

Page 3 of 9



## REFERENCE WELLPATH IDENTIFICATION

Operator	EQT PRODUCTION COMPANY	Well	BIG 245 106H (L-003509)
Field	Wetzel	API	47-103-03442-00-00
Facility	Big 245 Pad	Wellbore	BIG 245 106H AWB
Slot	Slot #106		

## WELLPATH DATA (166 stations)

MD [ft]	Inclination [°]	Azimuth [°]	TVD [ft]	Vert Sect [ft]	North [ft]	East [ft]	Grid East [US ft]	Grid North [US ft]	Latitude	Longitude	Closure Dist [ft]	Closure Dir [°]	DLS [°/100ft]	Build Rate [°/100ft]	Turn Rate [°/100ft]
2768.00	0.640	263.500	2767.97	-3.67	3.78	-0.45	1698784.81	400727.48	39°35'43.1163"N	80°34'8.1126"W	3.81	353.259	1.25	0.84	-109.61
2800.00	1.500	265.150	2799.97	-3.85	3.73	-1.04	1698784.22	400727.43	39°35'43.1157"N	80°34'8.1202"W	3.87	344.384	2.69	2.69	5.16
2831.00	2.320	256.040	2830.95	-4.06	3.54	-2.06	1698783.20	400727.24	39°35'43.1137"N	80°34'8.1331"W	4.10	329.881	2.81	2.65	-29.39
2863.00	3.230	256.840	2862.91	-4.29	3.18	-3.56	1698781.70	400726.88	39°35'43.1100"N	80°34'8.1523"W	4.78	311.773	2.85	2.84	2.50
2894.00	4.080	251.940	2893.85	-4.51	2.64	-5.46	1698779.80	400726.34	39°35'43.1044"N	80°34'8.1765"W	6.07	295.809	2.92	2.74	-15.81
2925.00	5.010	255.210	2924.75	-4.77	1.95	-7.82	1698777.44	400725.65	39°35'43.0973"N	80°34'8.2065"W	8.06	284.029	3.11	3.00	10.55
3020.00	6.820	252.570	3019.24	-5.78	-0.80	-17.21	1698768.05	400722.90	39°35'43.0691"N	80°34'8.3260"W	17.23	267.354	1.93	1.91	-2.78
3114.00	9.020	249.970	3112.34	-6.53	-4.99	-29.46	1698755.80	400718.71	39°35'43.0261"N	80°34'8.4819"W	29.88	260.384	2.37	2.34	-2.77
3208.00	10.340	248.760	3205.00	-6.95	-10.57	-44.25	1698741.02	400713.13	39°35'42.9693"N	80°34'8.6699"W	45.49	256.563	1.42	1.40	-1.29
3302.00	11.980	249.780	3297.22	-7.44	-17.00	-61.27	1698724.00	400706.70	39°35'42.9037"N	80°34'8.8863"W	63.58	254.492	1.76	1.74	1.09
3395.00	13.600	253.270	3387.91	-8.83	-23.48	-80.80	1698704.47	400700.22	39°35'42.8374"N	80°34'9.1348"W	84.14	253.793	1.93	1.74	3.75
3490.00	15.390	256.340	3479.88	-11.78	-29.68	-103.74	1698681.52	400694.02	39°35'42.7735"N	80°34'9.4270"W	107.91	254.036	2.05	1.88	3.23
3585.00	15.730	256.430	3571.40	-15.60	-35.68	-128.51	1698656.76	400688.03	39°35'42.7113"N	80°34'9.7424"W	133.37	254.485	0.36	0.36	0.09
3678.00	15.870	253.360	3660.89	-18.73	-42.27	-152.95	1698632.32	400681.43	39°35'42.6432"N	80°34'10.0536"W	158.68	254.549	0.91	0.15	-3.30
3773.00	15.460	251.520	3752.36	-20.83	-50.01	-177.40	1698607.87	400673.70	39°35'42.5639"N	80°34'10.3647"W	184.32	254.258	0.68	-0.43	-1.94
3867.00	15.110	250.370	3843.03	-22.20	-58.09	-200.83	1698584.45	400665.61	39°35'42.4812"N	80°34'10.6627"W	209.06	253.866	0.49	-0.37	-1.22
3961.00	14.760	248.880	3933.86	-22.99	-66.53	-223.54	1698561.74	400657.18	39°35'42.3952"N	80°34'10.9515"W	233.23	253.427	0.55	-0.37	-1.59
4055.00	15.150	249.230	4024.68	-23.53	-75.20	-246.19	1698539.08	400648.51	39°35'42.3069"N	80°34'11.2395"W	257.42	253.015	0.43	0.41	0.37
4150.00	15.460	251.950	4116.31	-24.77	-83.52	-269.84	1698515.44	400640.18	39°35'42.2218"N	80°34'11.5403"W	282.47	252.801	0.82	0.33	2.86
4245.00	15.310	255.570	4207.91	-27.40	-90.57	-294.02	1698491.26	400633.14	39°35'42.1493"N	80°34'11.8482"W	307.66	252.879	1.02	-0.16	3.81
4340.00	15.280	256.780	4299.54	-31.06	-96.56	-318.36	1698466.92	400627.15	39°35'42.0872"N	80°34'12.1581"W	332.68	253.127	0.34	-0.03	1.27
4436.00	15.070	255.360	4392.19	-34.69	-102.61	-342.74	1698442.54	400621.10	39°35'42.0246"N	80°34'12.4687"W	357.77	253.334	0.44	-0.22	-1.48
4527.00	14.170	253.170	4480.25	-37.30	-108.82	-364.85	1698420.43	400614.89	39°35'41.9606"N	80°34'12.7501"W	380.74	253.392	1.16	-0.99	-2.41
4622.00	13.430	254.320	4572.50	-39.65	-115.17	-386.60	1698398.68	400608.54	39°35'41.8953"N	80°34'13.0270"W	403.39	253.411	0.83	-0.78	1.21
4715.00	12.540	253.660	4663.12	-41.92	-120.93	-406.69	1698378.59	400602.78	39°35'41.8360"N	80°34'13.2827"W	424.29	253.440	0.97	-0.96	-0.71
4809.00	12.400	251.990	4754.91	-43.71	-126.92	-426.08	1698359.20	400596.79	39°35'41.7745"N	80°34'13.5295"W	444.58	253.412	0.41	-0.15	-1.78
4903.00	12.900	251.020	4846.63	-45.05	-133.45	-445.60	1698339.68	400590.26	39°35'41.7077"N	80°34'13.7778"W	465.16	253.328	0.58	0.53	-1.03
4998.00	13.050	248.990	4939.20	-45.88	-140.75	-465.64	1698319.65	400582.96	39°35'41.6332"N	80°34'14.0327"W	486.45	253.182	0.51	0.16	-2.14
5092.00	13.940	248.700	5030.60	-46.29	-148.67	-486.10	1698299.19	400575.04	39°35'41.5525"N	80°34'14.2928"W	508.32	252.995	0.95	0.95	-0.31
5188.00	14.790	251.180	5123.60	-47.20	-156.82	-508.47	1698276.82	400566.89	39°35'41.4693"N	80°34'14.5773"W	532.11	252.860	1.09	0.89	2.58



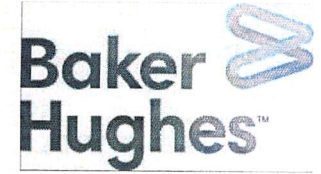


RECEIVED  
Office of Oil and Gas  
JAN 22 2024

# Actual Wellpath Report

BIG 245 106H AWP Proj: 15253'

Page 4 of 9



## REFERENCE WELLPATH IDENTIFICATION

Operator	EQT PRODUCTION COMPANY	Well	BIG 245 106H (L-003509)
Field	Wetzel	API	47-103-03442-00-00
Facility	Big 245 Pad	Wellbore	BIG 245 106H AWB
Slot	Slot #106		

## WELLPATH DATA (166 stations)

MD [ft]	Inclination [°]	Azimuth [°]	TVD [ft]	Vert Sect	North [ft]	East [ft]	Grid East [US ft]	Grid North [US ft]	Latitude	Longitude	Closure Dist [ft]	Closure Dir [°]	DLS [°/100ft]	Build Rate [°/100ft]	Turn Rate [°/100ft]
5283.00	14.930	253.470	5215.43	-49.14	-164.21	-531.68	1698253.61	400559.50	39°35'41.3935"N	80°34'14.8726"W	556.46	252.836	0.64	0.15	2.41
5376.00	15.510	253.600	5305.16	-51.59	-171.13	-555.10	1698230.20	400552.58	39°35'41.3224"N	80°34'15.1707"W	580.88	252.866	0.62	0.62	0.14
5471.00	15.850	253.050	5396.63	-54.08	-178.50	-579.69	1698205.61	400545.21	39°35'41.2467"N	80°34'15.4837"W	606.55	252.885	0.39	0.36	-0.58
5566.00	16.210	251.100	5487.94	-56.04	-186.58	-604.65	1698180.65	400537.13	39°35'41.1639"N	80°34'15.8012"W	632.78	252.851	0.68	0.38	-2.05
5662.00	16.780	254.660	5579.99	-58.48	-194.58	-630.69	1698154.61	400529.13	39°35'41.0817"N	80°34'16.1326"W	660.02	252.854	1.21	0.59	3.71
5757.00	17.730	256.630	5670.71	-62.36	-201.56	-657.99	1698127.31	400522.15	39°35'41.0096"N	80°34'16.4803"W	688.16	252.969	1.17	1.00	2.07
5852.00	17.590	255.870	5761.23	-66.61	-208.41	-685.98	1698099.32	400515.31	39°35'40.9386"N	80°34'16.8368"W	716.94	253.101	0.28	-0.15	-0.80
5947.00	16.960	252.230	5851.95	-69.71	-216.14	-713.10	1698072.21	400507.57	39°35'40.8590"N	80°34'17.1820"W	745.13	253.138	1.32	-0.66	-3.83
6042.00	17.240	251.480	5942.75	-71.70	-224.84	-739.64	1698045.67	400498.87	39°35'40.7699"N	80°34'17.5197"W	773.06	253.091	0.38	0.29	-0.79
6137.00	16.610	256.460	6033.64	-74.66	-232.49	-766.19	1698019.12	400491.22	39°35'40.6911"N	80°34'17.8577"W	800.69	253.120	1.66	-0.66	5.24
6232.00	16.230	258.400	6124.77	-79.16	-238.34	-792.40	1697992.91	400485.37	39°35'40.6302"N	80°34'18.1915"W	827.46	253.260	0.70	-0.40	2.04
6327.00	15.950	255.880	6216.05	-83.45	-244.19	-818.06	1697967.25	400479.52	39°35'40.5694"N	80°34'18.5184"W	853.73	253.379	0.79	-0.29	-2.65
6420.00	15.770	253.590	6305.51	-86.53	-250.88	-842.58	1697942.74	400472.83	39°35'40.5004"N	80°34'18.8305"W	879.13	253.419	0.70	-0.19	-2.46
6515.00	15.730	249.540	6396.94	-88.24	-259.03	-867.02	1697918.29	400464.69	39°35'40.4170"N	80°34'19.1416"W	904.89	253.366	1.16	-0.04	-4.26
6610.00	15.380	247.850	6488.46	-88.66	-268.28	-890.76	1697894.56	400455.43	39°35'40.3227"N	80°34'19.4433"W	930.28	253.239	0.60	-0.37	-1.78
6704.00	14.850	249.390	6579.21	-89.01	-277.22	-913.58	1697871.74	400446.50	39°35'40.2317"N	80°34'19.7335"W	954.71	253.120	0.71	-0.56	1.64
6799.00	14.720	251.370	6671.07	-90.12	-285.36	-936.41	1697848.91	400438.35	39°35'40.1486"N	80°34'20.0239"W	978.93	253.052	0.55	-0.14	2.08
6894.00	14.800	256.050	6762.94	-92.62	-292.14	-959.62	1697825.69	400431.57	39°35'40.0788"N	80°34'20.3193"W	1003.11	253.068	1.26	0.08	4.93
6964.00	15.350	255.060	6830.53	-95.08	-296.69	-977.25	1697808.07	400427.03	39°35'40.0318"N	80°34'20.5438"W	1021.30	253.112	0.87	0.79	-1.41
7066.00	16.870	245.350	6928.54	-96.17	-306.34	-1003.75	1697781.57	400417.38	39°35'39.9333"N	80°34'20.8809"W	1049.46	253.028	3.03	1.49	-9.52
7161.00	16.230	207.480	7019.86	-86.98	-323.92	-1022.46	1697762.86	400399.80	39°35'39.7574"N	80°34'21.1171"W	1072.55	252.422	11.18	-0.67	-39.86
7256.00	21.290	189.410	7109.86	-63.68	-352.76	-1031.42	1697753.90	400370.97	39°35'39.4713"N	80°34'21.2272"W	1090.08	251.119	8.05	5.33	-19.02
7351.00	28.510	182.210	7195.99	-28.30	-392.49	-1035.12	1697750.20	400331.24	39°35'39.0782"N	80°34'21.2684"W	1107.03	249.235	8.23	7.60	-7.58
7446.00	35.910	173.760	7276.36	19.22	-442.93	-1032.96	1697752.36	400280.79	39°35'38.5800"N	80°34'21.2331"W	1123.92	246.790	9.10	7.79	-8.89
7541.00	46.130	162.480	7348.04	80.37	-503.53	-1019.57	1697765.75	400220.20	39°35'37.9827"N	80°34'21.0528"W	1137.13	243.717	13.25	10.76	-11.87
7636.00	55.400	157.760	7408.08	153.78	-572.55	-994.40	1697790.92	400151.19	39°35'37.3036"N	80°34'20.7208"W	1147.45	240.068	10.48	9.76	-4.97
7730.00	64.240	152.570	7455.31	234.83	-646.11	-960.18	1697825.14	400077.63	39°35'36.5807"N	80°34'20.2724"W	1157.32	236.063	10.54	9.40	-5.52
7826.00	72.290	148.380	7490.85	323.17	-723.57	-916.20	1697869.12	400000.17	39°35'35.8203"N	80°34'19.6989"W	1167.47	231.700	9.31	8.39	-4.36
7921.00	78.780	149.520	7514.56	414.02	-802.34	-868.79	1697916.52	399921.40	39°35'35.0475"N	80°34'19.0813"W	1182.60	227.277	6.93	6.83	1.20
8016.00	85.690	152.120	7527.39	507.40	-884.48	-822.94	1697962.37	399839.27	39°35'34.2412"N	80°34'18.4832"W	1208.11	222.936	7.76	7.27	2.74

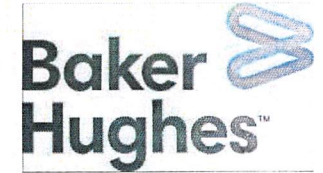




RECEIVED  
Office of Oil and Gas  
JAN 22 2024

# Actual Wellpath Report

BIG 245 106H AWP Proj: 15253'  
Page 5 of 9



REFERENCE WELLPATH IDENTIFICATION			
Operator	EQT PRODUCTION COMPANY	Well	BIG 245 106H (L-003509)
Field	Wetzel	API	47-103-03442-00-00
Facility	Big 245 Pad	Wellbore	BIG 245 106H AWB
Slot	Slot #106		

WELLPATH DATA (166 stations)															
MD [ft]	Inclination [°]	Azimuth [°]	TVD [ft]	Vert Sect [ft]	North [ft]	East [ft]	Grid East [US ft]	Grid North [US ft]	Latitude	Longitude	Closure Dist [ft]	Closure Dir [°]	DLS [°/100ft]	Build Rate [°/100ft]	Turn Rate [°/100ft]
8111.00	87.810	149.400	7532.78	601.52	-967.23	-776.62	1698008.69	399756.53	39°35'33.4289"N	80°34'17.8789"W	1240.43	218.762	3.63	2.23	-2.86
8205.00	89.820	150.600	7534.72	694.63	-1048.61	-729.63	1698055.67	399675.15	39°35'32.6301"N	80°34'17.2664"W	1277.48	214.831	2.49	2.14	1.28
8300.00	89.140	147.360	7535.59	788.50	-1130.01	-680.68	1698104.62	399593.76	39°35'31.8315"N	80°34'16.6288"W	1319.19	211.064	3.48	-0.72	-3.41
8395.00	89.350	147.090	7536.84	881.89	-1209.88	-629.26	1698156.04	399513.89	39°35'31.0482"N	80°34'15.9598"W	1363.74	207.479	0.36	0.22	-0.28
8490.00	89.600	147.810	7537.71	975.35	-1289.95	-578.15	1698207.14	399433.83	39°35'30.2629"N	80°34'15.2948"W	1413.59	204.142	0.80	0.26	0.76
8585.00	88.370	147.630	7539.39	1068.87	-1370.26	-527.42	1698257.87	399353.53	39°35'29.4753"N	80°34'14.6347"W	1468.26	201.052	1.31	-1.29	-0.19
8680.00	89.420	147.800	7541.22	1162.39	-1450.55	-476.69	1698308.60	399273.23	39°35'28.6877"N	80°34'13.9744"W	1526.87	198.192	1.12	1.11	0.18
8775.00	89.480	146.400	7542.14	1255.74	-1530.31	-425.09	1698360.19	399193.48	39°35'27.9056"N	80°34'13.3033"W	1588.26	195.524	1.47	0.06	-1.47
8870.00	89.350	148.850	7543.11	1349.25	-1610.53	-374.23	1698411.05	399113.26	39°35'27.1188"N	80°34'12.6414"W	1653.44	193.081	2.58	-0.14	2.58
8965.00	88.770	149.040	7544.66	1443.11	-1691.91	-325.23	1698460.05	399031.90	39°35'26.3204"N	80°34'12.0032"W	1722.88	190.881	0.64	-0.61	0.20
9059.00	90.250	149.300	7545.47	1536.05	-1772.62	-277.06	1698508.22	398951.19	39°35'25.5284"N	80°34'11.3757"W	1794.14	188.883	1.60	1.57	0.28
9155.00	88.520	148.960	7546.50	1630.95	-1855.01	-227.81	1698557.46	398868.80	39°35'24.7200"N	80°34'10.7341"W	1868.95	187.001	1.84	-1.80	-0.35
9250.00	89.380	147.930	7548.24	1724.67	-1935.95	-178.10	1698607.17	398787.87	39°35'23.9260"N	80°34'10.0869"W	1944.12	185.256	1.41	0.91	-1.08
9345.00	87.140	147.040	7551.12	1818.10	-2016.02	-127.07	1698658.20	398707.81	39°35'23.1407"N	80°34'9.4229"W	2020.02	183.607	2.54	-2.36	-0.94
9440.00	89.290	150.660	7554.08	1911.88	-2097.26	-77.96	1698707.30	398626.57	39°35'22.3436"N	80°34'8.7833"W	2098.71	182.129	4.43	2.26	3.81
9535.00	89.850	149.810	7554.80	2006.06	-2179.72	-30.80	1698754.46	398544.11	39°35'21.5342"N	80°34'8.1685"W	2179.94	180.810	1.07	0.59	-0.89
9630.00	88.400	147.500	7556.25	2099.84	-2260.84	18.61	1698803.86	398463.00	39°35'20.7384"N	80°34'7.5251"W	2260.92	179.528	2.87	-1.53	-2.43
9724.00	90.580	149.750	7557.08	2192.63	-2341.08	67.54	1698852.79	398382.76	39°35'19.9511"N	80°34'6.8879"W	2342.06	178.348	3.33	2.32	2.39
9819.00	89.110	148.370	7557.34	2286.53	-2422.56	116.38	1698901.63	398301.29	39°35'19.1517"N	80°34'6.2518"W	2425.36	177.250	2.12	-1.55	-1.45
9914.00	90.650	149.590	7557.54	2380.41	-2503.97	165.33	1698950.58	398219.88	39°35'18.3529"N	80°34'5.6141"W	2509.42	176.222	2.07	1.62	1.28
10009.00	89.510	149.420	7557.41	2474.42	-2585.83	213.54	1698998.79	398138.03	39°35'17.5496"N	80°34'4.9860"W	2594.63	175.279	1.21	-1.20	-0.18
10104.00	89.880	149.590	7557.91	2568.43	-2667.69	261.75	1699046.99	398056.18	39°35'16.7463"N	80°34'4.3579"W	2680.50	174.396	0.43	0.39	0.18
10199.00	90.370	149.290	7557.71	2662.43	-2749.49	310.05	1699095.29	397974.38	39°35'15.9435"N	80°34'3.7285"W	2766.92	173.566	0.60	0.52	-0.32
10294.00	89.140	149.420	7558.11	2756.40	-2831.22	358.47	1699143.71	397892.65	39°35'15.1415"N	80°34'3.0977"W	2853.82	172.784	1.30	-1.29	0.14
10389.00	89.020	149.070	7559.64	2850.34	-2912.85	407.05	1699192.28	397811.03	39°35'14.3405"N	80°34'2.4649"W	2941.15	172.045	0.39	-0.13	-0.37
10484.00	88.830	149.060	7561.42	2944.23	-2994.32	455.87	1699241.11	397729.56	39°35'13.5411"N	80°34'1.8289"W	3028.82	171.343	0.20	-0.20	-0.01
10579.00	89.420	149.590	7562.87	3038.19	-3076.02	504.33	1699289.56	397647.87	39°35'12.7394"N	80°34'1.1976"W	3117.09	170.689	0.83	0.62	0.56
10674.00	88.740	148.430	7564.40	3132.07	-3157.44	553.24	1699338.47	397566.45	39°35'11.9405"N	80°34'0.5607"W	3205.55	170.062	1.42	-0.72	-1.22
10768.00	89.910	149.900	7565.50	3225.00	-3238.15	601.42	1699386.64	397485.75	39°35'11.1486"N	80°33'59.9331"W	3293.53	169.478	2.00	1.24	1.56
10863.00	88.770	147.100	7566.60	3318.74	-3319.13	651.04	1699436.26	397404.77	39°35'10.3540"N	80°33'59.2870"W	3382.38	168.902	3.18	-1.20	-2.95



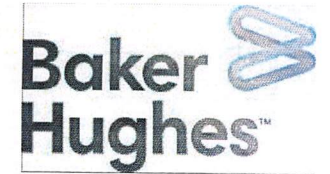


RECEIVED  
Office of Oil and Gas  
JAN 22 2024  
Department of  
Protection

# Actual Wellpath Report

BIG 245 106H AWP Proj: 15253'

Page 6 of 9



## REFERENCE WELLPATH IDENTIFICATION

Operator	EQT PRODUCTION COMPANY	Well	BIG 245 106H (L-003509)
Field	Wetzel	API	47-103-03442-00-00
Facility	Big 245 Pad	Wellbore	BIG 245 106H AWB
Slot	Slot #106		

## WELLPATH DATA (166 stations)

MD [ft]	Inclination [°]	Azimuth [°]	TVD [ft]	Vert Sect [ft]	North [ft]	East [ft]	Grid East [US ft]	Grid North [US ft]	Latitude	Longitude	Closure Dist [ft]	Closure Dir [°]	DLS [°/100ft]	Build Rate [°/100ft]	Turn Rate [°/100ft]
10958.00	89.660	149.840	7567.90	3412.47	-3400.09	700.71	1699485.93	397323.81	39°35'9.5598"N	80°33'58.6404"W	3471.55	168.355	3.03	0.94	2.88
11053.00	89.660	149.100	7568.46	3506.47	-3481.92	748.97	1699534.19	397241.99	39°35'8.7568"N	80°33'58.0116"W	3561.56	167.860	0.78	0.00	-0.78
11149.00	89.510	149.580	7569.16	3601.43	-3564.50	797.92	1699583.14	397159.42	39°35'7.9465"N	80°33'57.3739"W	3652.72	167.382	0.52	-0.16	0.50
11339.00	89.230	149.050	7571.25	3789.36	-3727.89	894.88	1699680.08	396996.04	39°35'6.3432"N	80°33'56.1109"W	3833.79	166.502	0.32	-0.15	-0.28
11434.00	89.820	147.870	7572.04	3883.10	-3808.85	944.57	1699729.77	396915.09	39°35'5.5489"N	80°33'55.4640"W	3924.22	166.072	1.39	0.62	-1.24
11529.00	89.510	149.880	7572.59	3976.95	-3890.17	993.67	1699778.87	396833.77	39°35'4.7510"N	80°33'54.8246"W	4015.07	165.671	2.14	-0.33	2.12
11624.00	89.230	148.900	7573.64	4070.93	-3971.92	1042.04	1699827.24	396752.02	39°35'3.9487"N	80°33'54.1945"W	4106.34	165.300	1.07	-0.29	-1.03
11718.00	89.420	149.780	7574.74	4163.91	-4052.77	1089.97	1699875.17	396671.17	39°35'3.1553"N	80°33'53.5701"W	4196.79	164.947	0.96	0.20	0.94
11813.00	89.450	149.270	7575.68	4257.92	-4134.65	1138.15	1699923.34	396589.31	39°35'2.3518"N	80°33'52.9424"W	4288.44	164.609	0.54	0.03	-0.54
11908.00	89.080	149.510	7576.90	4351.90	-4216.40	1186.52	1699971.71	396507.56	39°35'1.5496"N	80°33'52.3123"W	4380.17	164.283	0.46	-0.39	0.25
12003.00	87.940	146.820	7579.37	4445.52	-4297.07	1236.61	1700021.79	396426.89	39°35'0.7582"N	80°33'51.6604"W	4471.47	163.945	3.07	-1.20	-2.83
12098.00	88.710	150.210	7582.15	4539.23	-4378.04	1286.19	1700071.38	396345.93	39°34'59.9638"N	80°33'51.0149"W	4563.06	163.628	3.66	0.81	3.57
12193.00	88.920	147.470	7584.11	4633.05	-4459.31	1335.33	1700120.51	396264.66	39°34'59.1664"N	80°33'50.3750"W	4654.95	163.330	2.89	0.22	-2.88
12288.00	90.340	150.820	7584.73	4726.96	-4540.85	1384.05	1700169.22	396183.13	39°34'58.3663"N	80°33'49.7406"W	4747.09	163.049	3.83	1.49	3.53
12383.00	88.060	149.340	7586.05	4821.09	-4623.17	1431.42	1700216.60	396100.81	39°34'57.5583"N	80°33'49.1231"W	4839.70	162.796	2.86	-2.40	-1.56
12478.00	90.920	151.230	7586.90	4915.26	-4705.66	1478.50	1700263.67	396018.32	39°34'56.7486"N	80°33'48.5093"W	4932.47	162.557	3.61	3.01	1.99
12573.00	90.120	145.970	7586.03	5009.01	-4786.72	1527.98	1700313.15	395937.27	39°34'55.9533"N	80°33'47.8652"W	5024.68	162.296	5.60	-0.84	-5.54
12668.00	88.800	148.790	7586.93	5102.44	-4866.72	1579.18	1700364.35	395857.28	39°34'55.1687"N	80°33'47.1992"W	5116.52	162.022	3.28	-1.39	2.97
12763.00	89.690	148.970	7588.18	5196.29	-4948.04	1628.28	1700413.44	395775.96	39°34'54.3708"N	80°33'46.5600"W	5209.07	161.785	0.96	0.94	0.19
12858.00	89.200	149.270	7589.10	5290.20	-5029.57	1677.03	1700462.19	395694.44	39°34'53.5708"N	80°33'45.9250"W	5301.79	161.560	0.60	-0.52	0.32
12953.00	88.550	147.930	7590.97	5383.97	-5110.64	1726.52	1700511.67	395613.37	39°34'52.7754"N	80°33'45.2808"W	5394.40	161.334	1.57	-0.68	-1.41
13049.00	90.150	149.240	7592.06	5478.72	-5192.56	1776.55	1700561.70	395531.46	39°34'51.9717"N	80°33'44.6295"W	5488.06	161.112	2.15	1.67	1.36
13144.00	89.820	150.370	7592.08	5572.81	-5274.67	1824.33	1700609.48	395449.36	39°34'51.1658"N	80°33'44.0069"W	5581.24	160.921	1.24	-0.35	1.19
13239.00	89.420	147.070	7592.71	5666.61	-5355.84	1873.65	1700658.79	395368.18	39°34'50.3694"N	80°33'43.3648"W	5674.12	160.719	3.50	-0.42	-3.47
13334.00	89.170	150.010	7593.88	5760.36	-5436.86	1923.22	1700708.36	395287.17	39°34'49.5745"N	80°33'42.7195"W	5767.00	160.519	3.11	-0.26	3.09
13429.00	89.320	149.680	7595.13	5854.44	-5519.00	1970.94	1700756.08	395205.04	39°34'48.7683"N	80°33'42.0978"W	5860.37	160.347	0.38	0.16	-0.35
13524.00	89.480	149.820	7596.13	5948.51	-5601.06	2018.79	1700803.93	395122.98	39°34'47.9629"N	80°33'41.4742"W	5953.77	160.179	0.22	0.17	0.15
13619.00	90.030	150.040	7596.53	6042.62	-5683.27	2066.39	1700851.53	395040.77	39°34'47.1560"N	80°33'40.8539"W	6047.28	160.019	0.62	0.58	0.23
13714.00	88.830	150.380	7597.48	6136.79	-5765.71	2113.59	1700898.72	394958.34	39°34'46.3468"N	80°33'40.2388"W	6140.91	159.868	1.31	-1.26	0.36
13809.00	89.010	148.560	7599.27	6230.77	-5847.53	2161.84	1700946.96	394876.53	39°34'45.5439"N	80°33'39.6103"W	6234.35	159.711	1.92	0.19	-1.92





# Actual Wellpath Report

BIG 245 106H AWP Proj: 15253'

Page 7 of 9



REFERENCE WELLPATH IDENTIFICATION			
Operator	EQT PRODUCTION COMPANY	Well	BIG 245 106H (L-003509)
Field	Wetzel	API	47-103-03442-00-00
Facility	Big 245 Pad	Wellbore	BIG 245 106H AWB
Slot	Slot #106		

## WELLPATH DATA (166 stations) † = interpolated, ‡ = extrapolated station

MD [ft]	Inclination [°]	Azimuth [°]	TVD [ft]	Vert Sect [ft]	North [ft]	East [ft]	Grid East [US ft]	Grid North [US ft]	Latitude	Longitude	Closure Dist [ft]	Closure Dir [°]	DLS [°/100ft]	Build Rate [°/100ft]	Turn Rate [°/100ft]
13904.00	90.250	151.460	7599.88	6324.89	-5929.79	2209.31	1700994.44	394794.27	39°34'44.7365"N	80°33'38.9916"W	6328.00	159.566	3.32	1.31	3.05
13999.00	88.430	148.860	7600.98	6419.03	-6012.18	2256.58	1701041.70	394711.88	39°34'43.9278"N	80°33'38.3756"W	6421.72	159.427	3.34	-1.92	-2.74
14094.00	90.060	149.610	7602.23	6512.97	-6093.80	2305.16	1701090.28	394630.27	39°34'43.1268"N	80°33'37.7428"W	6515.23	159.279	1.89	1.72	0.79
14189.00	89.290	150.680	7602.77	6607.13	-6176.19	2352.45	1701137.57	394547.88	39°34'42.3181"N	80°33'37.1265"W	6609.04	159.149	1.39	-0.81	1.13
14284.00	89.570	147.860	7603.71	6701.07	-6257.84	2400.99	1701186.10	394466.24	39°34'41.5169"N	80°33'36.4944"W	6702.64	159.009	2.98	0.29	-2.97
14379.00	88.740	149.740	7605.11	6794.89	-6339.09	2450.19	1701235.30	394385.00	39°34'40.7197"N	80°33'35.8538"W	6796.14	158.867	2.16	-0.87	1.98
14475.00	89.880	149.860	7606.27	6889.96	-6422.05	2498.48	1701283.59	394302.04	39°34'39.9055"N	80°33'35.2247"W	6890.95	158.742	1.19	1.19	0.13
14570.00	89.820	150.080	7606.52	6984.08	-6504.30	2546.02	1701331.13	394219.80	39°34'39.0982"N	80°33'34.6052"W	6984.85	158.623	0.24	-0.06	0.23
14665.00	89.850	149.320	7606.79	7078.13	-6586.32	2593.95	1701379.05	394137.78	39°34'38.2932"N	80°33'33.9808"W	7078.71	158.504	0.80	0.03	-0.80
14760.00	90.340	150.200	7606.64	7172.21	-6668.39	2641.80	1701426.89	394055.72	39°34'37.4877"N	80°33'33.3574"W	7172.62	158.388	1.06	0.52	0.93
14855.00	90.090	150.100	7606.28	7266.37	-6750.79	2689.08	1701474.18	393973.33	39°34'36.6789"N	80°33'32.7412"W	7266.66	158.281	0.28	-0.26	-0.11
14950.00	89.510	149.270	7606.61	7360.42	-6832.80	2737.03	1701522.12	393891.32	39°34'35.8741"N	80°33'32.1165"W	7360.60	158.170	1.07	-0.61	-0.87
15045.00	90.060	149.770	7606.97	7454.44	-6914.67	2785.22	1701570.31	393809.46	39°34'35.0706"N	80°33'31.4889"W	7454.53	158.060	0.78	0.58	0.53
15140.00	90.000	149.610	7606.92	7548.49	-6996.68	2833.16	1701618.25	393727.45	39°34'34.2657"N	80°33'30.8643"W	7548.53	157.956	0.18	-0.06	-0.17
15228.00	90.060	150.110	7606.87	7635.66	-7072.78	2877.35	1701662.43	393651.35	39°34'33.5187"N	80°33'30.2886"W	7635.67	157.863	0.57	0.07	0.57
15253.00†	90.060	150.110	7606.84	7660.43	-7094.46	2889.81	1701674.89	393629.68	39°34'33.3060"N	80°33'30.1262"W	7660.44	157.837	0.00	0.00	0.00

## HOLE & CASING SECTIONS - Ref Wellbore: BIG 245 106H AWB Ref Wellpath: BIG 245 106H AWP Proj: 15253'

String/Diameter	Start MD [ft]	End MD [ft]	Interval [ft]	Start TVD [ft]	End TVD [ft]	Start N/S [ft]	Start E/W [ft]	End N/S [ft]	End E/W [ft]
17.5in Open Hole	28.00	1243.00	1215.00	28.00	1242.99	0.00	0.00	-1.27	2.02
13.375in Casing Surface	28.00	1213.00	1185.00	28.00	1212.99	0.00	0.00	-1.25	2.03
12.25in Open Hole	1243.00	2699.00	1456.00	1242.99	2698.97	-1.27	2.02	3.71	-0.02
9.625in Casing Intermediate	28.00	2669.00	2641.00	28.00	2668.97	0.00	0.00	3.71	0.07
8.75in Open Hole	2699.00	7041.00	4342.00	2698.97	6904.59	3.71	-0.02	-303.48	-997.18
8.5in Open Hole	7041.00	15253.00	8212.00	6904.59	7606.84	-303.48	-997.18	-7094.46	2889.81
5.5in Casing Production	28.00	15223.00	15195.00	28.00	7606.88	0.00	0.00	-7068.45	2874.86

RECEIVED  
Office of Oil and Gas

JAN 22 2024

WV Department of  
Environmental Protection

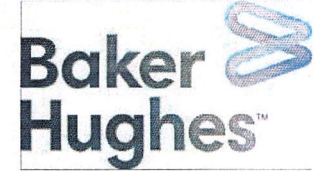




# Actual Wellpath Report

BIG 245 106H AWP Proj: 15253'

Page 8 of 9



REFERENCE WELLPATH IDENTIFICATION			
Operator	EQT PRODUCTION COMPANY	Well	BIG 245 106H (L-003509)
Field	Wetzel	API	47-103-03442-00-00
Facility	Big 245 Pad	Wellbore	BIG 245 106H AWB
Slot	Slot #106		

TARGETS								
Name	TVD [ft]	North [ft]	East [ft]	Grid East [US ft]	Grid North [US ft]	Latitude	Longitude	Shape
BIG 245 106H LP Rev-1	7536.00	-929.21	-803.98	1697981.33	399794.55	39°35'33.8014"N	80°34'18.2342"W	point
BIG 245 106H BHL Rev-1	7567.40	-7091.98	2899.16	1701684.24	393632.15	39°34'33.3315"N	80°33'30.0072"W	point
BIG 245 Hardline 3	9000.00	-6988.98	3070.59	1701855.66	393735.15	39°34'34.3694"N	80°33'27.8335"W	rectangle
	2D Rectangle 700 x 2.							
BIG 245 L&A 1 Rev-0	9000.00	-4181.13	-700.03	1698085.27	396542.82	39°35'1.6765"N	80°34'16.4112"W	polygon
	2D Polygon: dimensions not calculated							

WELLPATH COMPOSITION - Ref Wellbore: BIG 245 106H AWB Ref Wellpath: BIG 245 106H AWP Proj: 15253'					
Start MD [ft]	End MD [ft]	Positional Uncertainty Model	Log Name/Comment	Wellbore	Survey Date
28.00	1115.00	Gyrodata 2015 - CT+WIR+ALC	01 <17.5">Gyrodata [CT+WIR+ALC] (115'-1115')	BIG 245 106H AWB	6/1/2022
1115.00	2566.00	Gyrodata 2015 - CT+WIR+ALC	02 <12.25">Gyrodata [CT+WIR+ALC] (1115')(1215'- 2566')	BIG 245 106H AWB	6/1/2022
2566.00	6964.00	OWSG MWD rev2 - Standard	03 <8.75"> OWSG MWD REV.2 [STANDARD] (2566')(2705'-6964')	BIG 245 106H AWB	6/1/2022
6964.00	15253.00	OWSG MWD rev2 + IFR1 + Multi-Station Correction	04 <8.5">OWSG MWD REV.2 [IFR1+MSA] (6964')(7066'-15228')	BIG 245 106H AWB	6/1/2022

RECEIVED  
Office of Oil and Gas

JAN 22 2024

WV Department of  
Environmental Protection

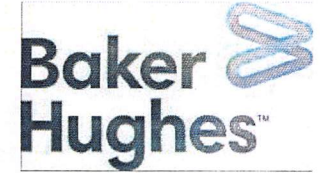




# Actual Wellpath Report

BIG 245 106H AWP Proj: 15253'

Page 9 of 9



## REFERENCE WELLPATH IDENTIFICATION

Operator	EQT PRODUCTION COMPANY	Well	BIG 245 106H (L-003509)
Field	Wetzel	API	47-103-03442-00-00
Facility	Big 245 Pad	Wellbore	BIG 245 106H AWB
Slot	Slot #106		

## COMMENTS

### Wellpath general comments

API: 47103034420000

BH Job #: 111368347

Rig: Patterson 292

Duration: 06/21/2022 - 06/22/2022

01\_<17.5">Gyrodata [CT+WIR+ALC] (115'-1115')

02\_<12.25">Gyrodata [CT+WIR+ALC] (1115')(1215'- 2566')

03\_<8.75"> OWSG MWD REV.2 [STANDARD] (2566')(2705'-6964')

04\_<8.5">OWSG MWD REV.2 [IFR1+MSA] (6964')(7066'-15228')

KOP = 2737' MD / 2736.97' TVD

Tie on to SDI MWD = 6964' MD / 6830.53' TVD

Marcellus

Landing Point = 8111' MD / 7532.78' TVD

Deepest Point of Well = 15045' MD / 7606.97' TVD

Final Survey = 15228' MD / 7606.87' TVD

Projection to TD = 15253' MD / 7606.84' TVD

RECEIVED  
Office of Oil and Gas  
JAN 22 2024  
WV Department of  
Environmental Protection