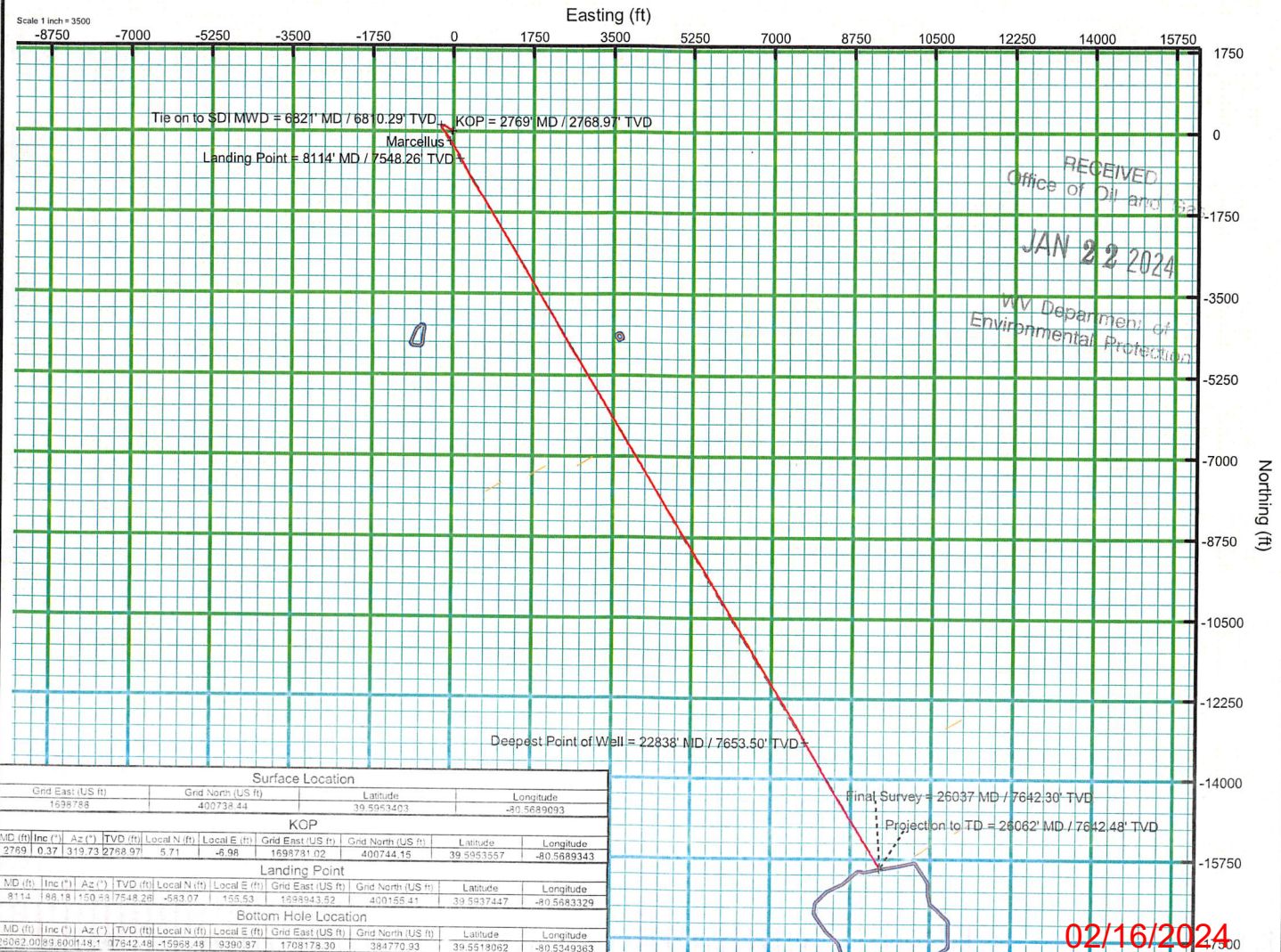
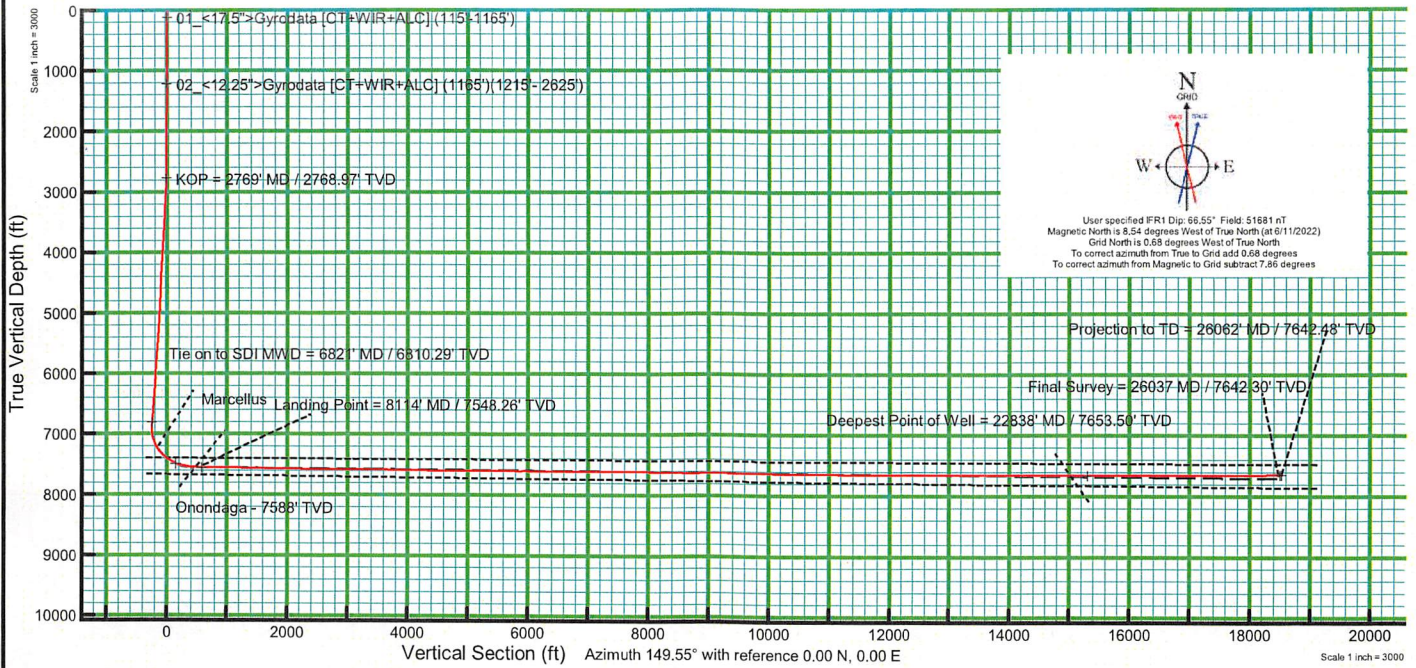




KB Elevation=1458 FT
 Ground Elevation=1430 FT
 All Survey Measurements were taken from KB Elevation



Surface Location									
Grid East (US ft)		Grid North (US ft)		Latitude		Longitude			
1698788		400738.44		39.5953403		-80.5689693			
KOP									
MD (ft)	Incl (°)	Az (°)	TVD (ft)	Local N (ft)	Local E (ft)	Grid East (US ft)	Grid North (US ft)	Latitude	Longitude
2769	0.37	319.73	2768.97	5.71	-5.98	1698781.02	400744.15	39.5953557	-80.5689343
Landing Point									
MD (ft)	Incl (°)	Az (°)	TVD (ft)	Local N (ft)	Local E (ft)	Grid East (US ft)	Grid North (US ft)	Latitude	Longitude
8114	188.18	160.88	7548.26	-563.07	155.53	1698943.52	400155.41	39.5937447	-80.5683329
Bottom Hole Location									
MD (ft)	Incl (°)	Az (°)	TVD (ft)	Local N (ft)	Local E (ft)	Grid East (US ft)	Grid North (US ft)	Latitude	Longitude
26062.00	89.600	18.1	77842.48	-15968.48	9390.87	1708178.30	384770.93	39.5518062	-80.5349363

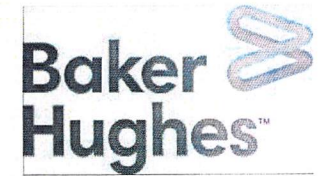
02/16/2024



Actual Wellpath Report

BIG 245 108H AWP Proj: 26062'

Page 1 of 14



REFERENCE WELLPATH IDENTIFICATION

Operator	EQT PRODUCTION COMPANY	Well	BIG 245 108H (L-003000)
Field	Wetzel	API	47-103-03443-00-00
Facility	Big 245 Pad	Wellbore	BIG 245 108H AWB
Slot	Slot #108		

REPORT SETUP INFORMATION

Projection System	NAD27 / Lambert West Virginia SP, Northern Zone (4701), US feet	Software System	WellArchitect® 6.0
North Reference	Grid	User	Manajohj
Scale	0.999941	Report Generated	8/4/2022 at 1:52:42 PM
Convergence at slot	0.68° West	Database	WA_MPL_EASTERNUS_Defn

WELLPATH LOCATION

	Local coordinates		Grid coordinates		Geographic coordinates	
	North[ft]	East[ft]	Easting[US ft]	Northing[US ft]	Latitude	Longitude
Slot Location	14.78	2.72	1698788.00	400738.44	39°35'43.2249"N	80°34'8.0736"W
Facility Reference Pt			1698785.28	400723.66	39°35'43.0785"N	80°34'8.1061"W
Field Reference Pt			1688243.35	385255.46	39°33'8.9436"N	80°36'20.3370"W

WELLPATH DATUM

Calculation method	Minimum curvature	Patterson 292 (RKB) to Facility Vertical Datum	1458.00ft
Horizontal Reference Pt	Slot	Patterson 292 (RKB) to Mean Sea Level	1458.00ft
Vertical Reference Pt	Patterson 292 (RKB)	Patterson 292 (RKB) to Ground Level at Slot (Slot #108)	28.00ft
MD Reference Pt	Patterson 292 (RKB)	Section Origin	N 0.00, E 0.00 ft
Field Vertical Reference	Mean Sea Level	Section Azimuth	149.55°

RECEIVED
 Office of Oil and Gas
 WV Department of
 Environmental Protection
 JAN 22 2024



Actual Wellpath Report

BIG 245 108H AWP Proj: 26062'

Page 2 of 14



REVIEWED
 Oil and Gas
 Department of
 Environmental Protection
 JAN 2 2024

REFERENCE WELLPATH IDENTIFICATION			
Operator	EQT PRODUCTION COMPANY	Well	BIG 245 108H (L-003000)
Field	Wetzel	API	47-103-03443-00-00
Facility	Big 245 Pad	Wellbore	BIG 245 108H AWB
Slot	Slot #108		

WELLPATH DATA (303 stations) † = interpolated, ‡ = extrapolated station

MD [ft]	Inclination [°]	Azimuth [°]	TVD [ft]	Vert Sect [ft]	North [ft]	East [ft]	Grid East [US ft]	Grid North [US ft]	Latitude	Longitude	Closure Dist [ft]	Closure Dir [°]	DLS [°/100ft]	Build Rate [°/100ft]	Turn Rate [°/100ft]
0.00†	0.000	282.910	0.00	0.00	0.00	0.00	1698788.00	400738.44	39°35'43.2249"N	80°34'8.0736"W	0.00	0.000	0.00	0.00	0.00
28.00	0.000	282.910	28.00	0.00	0.00	0.00	1698788.00	400738.44	39°35'43.2249"N	80°34'8.0736"W	0.00	0.000	0.00	0.00	0.00
115.00	0.540	282.910	115.00	-0.28	0.09	-0.40	1698787.60	400738.53	39°35'43.2258"N	80°34'8.0787"W	0.41	282.910	0.62	0.62	0.00
165.00	0.480	280.850	165.00	-0.58	0.18	-0.83	1698787.17	400738.62	39°35'43.2267"N	80°34'8.0842"W	0.85	282.405	0.13	-0.12	-4.12
215.00	0.310	241.270	215.00	-0.72	0.16	-1.16	1698786.84	400738.60	39°35'43.2264"N	80°34'8.0884"W	1.17	277.764	0.62	-0.34	-79.16
265.00	0.250	250.310	265.00	-0.75	0.06	-1.38	1698786.62	400738.50	39°35'43.2253"N	80°34'8.0912"W	1.38	272.335	0.15	-0.12	18.08
315.00	0.510	308.680	314.99	-0.98	0.16	-1.66	1698786.34	400738.60	39°35'43.2296"N	80°34'8.0947"W	1.66	275.468	0.87	0.52	116.74
365.00	0.640	314.270	364.99	-1.45	0.49	-2.03	1698785.97	400738.93	39°35'43.2296"N	80°34'8.0996"W	2.09	283.636	0.28	0.26	11.18
415.00	0.490	327.960	414.99	-1.94	0.87	-2.34	1698785.66	400739.31	39°35'43.2332"N	80°34'8.1036"W	2.50	290.336	0.40	-0.30	27.38
465.00	0.360	324.200	464.99	-2.31	1.18	-2.55	1698785.45	400739.62	39°35'43.2363"N	80°34'8.1063"W	2.81	294.790	0.27	-0.26	-7.52
515.00	0.190	323.290	514.99	-2.55	1.37	-2.69	1698785.31	400739.81	39°35'43.2382"N	80°34'8.1081"W	3.02	297.004	0.34	-0.34	-1.82
565.00	0.120	295.160	564.99	-2.67	1.46	-2.79	1698785.21	400739.90	39°35'43.2390"N	80°34'8.1094"W	3.15	297.642	0.20	-0.14	-56.26
615.00	0.200	309.920	614.99	-2.80	1.54	-2.90	1698785.10	400739.98	39°35'43.2398"N	80°34'8.1109"W	3.28	297.926	0.18	0.16	29.52
665.00	0.160	344.720	664.99	-2.95	1.66	-2.99	1698785.01	400740.10	39°35'43.2410"N	80°34'8.1120"W	3.42	299.083	0.23	-0.08	69.60
715.00	0.080	334.350	714.99	-3.05	1.76	-3.02	1698784.98	400740.20	39°35'43.2420"N	80°34'8.1124"W	3.50	300.231	0.17	-0.16	-20.74
765.00	0.230	302.290	764.99	-3.17	1.85	-3.12	1698784.88	400740.29	39°35'43.2428"N	80°34'8.1137"W	3.63	300.598	0.34	0.30	-64.12
815.00	0.290	302.540	814.99	-3.37	1.97	-3.31	1698784.69	400740.41	39°35'43.2440"N	80°34'8.1162"W	3.85	300.705	0.12	0.12	0.50
865.00	0.330	298.540	864.98	-3.61	2.10	-3.55	1698784.45	400740.54	39°35'43.2453"N	80°34'8.1192"W	4.12	300.686	0.09	0.08	-8.00
915.00	0.420	302.570	914.98	-3.90	2.27	-3.83	1698784.17	400740.71	39°35'43.2469"N	80°34'8.1228"W	4.45	300.694	0.19	0.18	8.06
965.00	0.280	314.530	964.98	-4.18	2.46	-4.07	1698783.93	400740.90	39°35'43.2487"N	80°34'8.1259"W	4.75	301.119	0.31	-0.28	23.92
1015.00	0.190	309.810	1014.98	-4.37	2.59	-4.22	1698783.78	400741.03	39°35'43.2501"N	80°34'8.1278"W	4.95	301.592	0.18	-0.18	-9.44
1065.00	0.080	271.210	1064.98	-4.47	2.65	-4.32	1698783.68	400741.09	39°35'43.2506"N	80°34'8.1291"W	5.06	301.526	0.27	-0.22	-77.20
1115.00	0.100	266.340	1114.98	-4.51	2.65	-4.40	1698783.60	400741.09	39°35'43.2506"N	80°34'8.1301"W	5.13	301.048	0.04	0.04	-9.74
1165.00	0.080	258.790	1164.98	-4.54	2.64	-4.47	1698783.53	400741.08	39°35'43.2505"N	80°34'8.1311"W	5.19	300.515	0.05	-0.04	-15.10
1215.00	0.080	255.810	1214.98	-4.56	2.62	-4.54	1698783.46	400741.06	39°35'43.2503"N	80°34'8.1320"W	5.24	299.993	0.01	0.00	-5.96
1265.00	0.110	159.070	1264.98	-4.52	2.57	-4.56	1698783.44	400741.01	39°35'43.2498"N	80°34'8.1322"W	5.23	299.395	0.29	0.06	-193.48
1315.00	0.150	169.400	1314.98	-4.42	2.46	-4.53	1698783.47	400740.90	39°35'43.2487"N	80°34'8.1318"W	5.15	298.497	0.09	0.08	20.66
1365.00	0.120	247.010	1364.98	-4.36	2.37	-4.57	1698783.43	400740.81	39°35'43.2479"N	80°34'8.1322"W	5.15	297.475	0.34	-0.06	155.22
1415.00	0.080	252.510	1414.98	-4.37	2.34	-4.65	1698783.35	400740.78	39°35'43.2475"N	80°34'8.1333"W	5.20	296.759	0.08	-0.08	11.00
1465.00	0.150	324.420	1464.98	-4.45	2.39	-4.72	1698783.28	400740.83	39°35'43.2480"N	80°34'8.1342"W	5.29	296.825	0.29	0.14	143.82

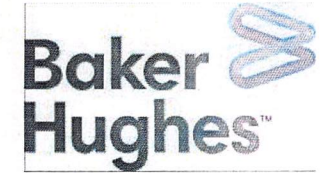


RECEIVED
 Office of Oil and Gas
 JAN 22 2024
 WV Department of
 Environmental Protection

Actual Wellpath Report

BIG 245 108H AWP Proj: 26062'

Page 3 of 14



REFERENCE WELLPATH IDENTIFICATION

Operator	EQT PRODUCTION COMPANY	Well	BIG 245 108H (L-003000)
Field	Wetzel	API	47-103-03443-00-00
Facility	Big 245 Pad	Wellbore	BIG 245 108H AWB
Slot	Slot #108		

WELLPATH DATA (303 stations)

MD [ft]	Inclination [°]	Azimuth [°]	TVD [ft]	Vert Sect [ft]	North [ft]	East [ft]	Grid East [US ft]	Grid North [US ft]	Latitude	Longitude	Closure Dist [ft]	Closure Dir [°]	DLS [°/100ft]	Build Rate [°/100ft]	Turn Rate [°/100ft]
1515.00	0.290	354.530	1514.98	-4.63	2.57	-4.77	1698783.23	400741.00	39°35'43.2497"N	80°34'8.1349"W	5.41	298.277	0.35	0.28	60.22
1565.00	0.570	350.000	1564.98	-4.98	2.94	-4.82	1698783.18	400741.38	39°35'43.2534"N	80°34'8.1356"W	5.65	301.327	0.56	0.56	-9.06
1615.00	0.530	327.460	1614.98	-5.44	3.38	-4.99	1698783.01	400741.82	39°35'43.2577"N	80°34'8.1378"W	6.03	304.073	0.44	-0.08	-45.08
1665.00	0.610	331.250	1664.98	-5.94	3.80	-5.24	1698782.76	400742.24	39°35'43.2619"N	80°34'8.1411"W	6.48	305.960	0.18	0.16	7.58
1715.00	0.670	331.830	1714.97	-6.49	4.30	-5.51	1698782.49	400742.73	39°35'43.2667"N	80°34'8.1446"W	6.99	307.939	0.12	0.12	1.16
1765.00	0.550	342.680	1764.97	-7.02	4.78	-5.72	1698782.28	400743.22	39°35'43.2715"N	80°34'8.1473"W	7.45	309.901	0.33	-0.24	21.70
1815.00	0.400	316.020	1814.97	-7.42	5.14	-5.91	1698782.09	400743.58	39°35'43.2750"N	80°34'8.1498"W	7.83	310.987	0.53	-0.30	-53.32
1865.00	0.130	303.880	1864.97	-7.64	5.29	-6.08	1698781.92	400743.73	39°35'43.2765"N	80°34'8.1520"W	8.06	311.046	0.55	-0.54	-24.28
1915.00	0.070	299.250	1914.97	-7.72	5.34	-6.15	1698781.85	400743.78	39°35'43.2770"N	80°34'8.1530"W	8.15	310.953	0.12	-0.12	-9.26
1965.00	0.040	253.580	1964.97	-7.75	5.35	-6.20	1698781.80	400743.79	39°35'43.2771"N	80°34'8.1535"W	8.19	310.806	0.10	-0.06	-91.34
2015.00	0.050	293.690	2014.97	-7.77	5.35	-6.23	1698781.77	400743.79	39°35'43.2771"N	80°34'8.1540"W	8.22	310.659	0.06	0.02	80.22
2065.00	0.130	202.510	2064.97	-7.76	5.31	-6.28	1698781.72	400743.75	39°35'43.2767"N	80°34'8.1545"W	8.22	310.239	0.28	0.16	-182.36
2115.00	0.080	211.550	2114.97	-7.71	5.23	-6.32	1698781.68	400743.67	39°35'43.2759"N	80°34'8.1550"W	8.20	309.621	0.11	-0.10	18.08
2165.00	0.120	233.970	2164.97	-7.69	5.17	-6.38	1698781.62	400743.61	39°35'43.2753"N	80°34'8.1558"W	8.21	309.025	0.11	0.08	44.84
2215.00	0.160	258.120	2214.97	-7.70	5.12	-6.49	1698781.51	400743.56	39°35'43.2748"N	80°34'8.1572"W	8.27	308.299	0.14	0.08	48.30
2265.00	0.030	303.930	2264.97	-7.74	5.12	-6.57	1698781.43	400743.56	39°35'43.2747"N	80°34'8.1582"W	8.32	307.923	0.28	-0.26	91.62
2315.00	0.080	295.300	2314.97	-7.78	5.14	-6.61	1698781.39	400743.58	39°35'43.2749"N	80°34'8.1587"W	8.37	307.864	0.10	0.10	-17.26
2365.00	0.040	300.390	2364.97	-7.82	5.16	-6.65	1698781.35	400743.60	39°35'43.2752"N	80°34'8.1593"W	8.42	307.797	0.08	-0.08	10.18
2415.00	0.040	323.200	2414.97	-7.85	5.18	-6.68	1698781.32	400743.62	39°35'43.2754"N	80°34'8.1597"W	8.46	307.814	0.03	0.00	45.62
2465.00	0.100	333.630	2464.97	-7.92	5.24	-6.71	1698781.29	400743.68	39°35'43.2759"N	80°34'8.1601"W	8.51	307.973	0.12	0.12	20.86
2515.00	0.040	54.330	2514.97	-7.96	5.29	-6.72	1698781.28	400743.73	39°35'43.2764"N	80°34'8.1601"W	8.55	308.212	0.20	-0.12	161.40
2565.00	0.160	24.380	2564.97	-8.00	5.36	-6.67	1698781.33	400743.80	39°35'43.2771"N	80°34'8.1596"W	8.56	308.778	0.25	0.24	-59.90
2615.00	0.060	14.360	2614.97	-8.06	5.45	-6.64	1698781.36	400743.89	39°35'43.2780"N	80°34'8.1592"W	8.59	309.388	0.20	-0.20	-20.04
2625.00	0.120	320.720	2624.97	-8.08	5.46	-6.64	1698781.36	400743.90	39°35'43.2781"N	80°34'8.1592"W	8.60	309.433	0.97	0.60	-536.40
2738.00	0.170	291.610	2737.97	-8.32	5.62	-6.87	1698781.13	400744.06	39°35'43.2796"N	80°34'8.1622"W	8.88	309.251	0.08	0.04	-25.76
2769.00	0.370	319.730	2768.97	-8.46	5.71	-6.98	1698781.02	400744.15	39°35'43.2805"N	80°34'8.1636"W	9.02	309.278	0.76	0.65	90.71
2800.00	0.830	310.000	2799.96	-8.77	5.93	-7.22	1698780.78	400744.37	39°35'43.2827"N	80°34'8.1666"W	9.34	309.407	1.51	1.48	-31.39
2832.00	2.240	306.870	2831.95	-9.57	6.45	-7.90	1698780.11	400744.89	39°35'43.2878"N	80°34'8.1754"W	10.20	309.265	4.41	4.41	-9.78
2863.00	3.790	311.890	2862.91	-11.10	7.50	-9.14	1698778.86	400745.94	39°35'43.2980"N	80°34'8.1915"W	11.83	309.370	5.07	5.00	16.19
2895.00	5.110	309.840	2894.81	-13.45	9.12	-11.02	1698776.98	400747.56	39°35'43.3138"N	80°34'8.2158"W	14.31	309.603	4.15	4.12	-6.41

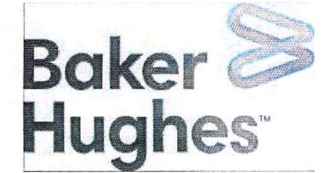


RECEIVED
Office of Oil and Gas
JAN 22 2024
WV Department of
Environmental Protection

Actual Wellpath Report

BIG 245 108H AWP Proj: 26062'

Page 4 of 14



REFERENCE WELLPATH IDENTIFICATION

Operator	EQT PRODUCTION COMPANY	Well	BIG 245 108H (L-003000)
Field	Wetzel	API	47-103-03443-00-00
Facility	Big 245 Pad	Wellbore	BIG 245 108H AWB
Slot	Slot #108		

WELLPATH DATA (303 stations)

MD [ft]	Inclination [°]	Azimuth [°]	TVD [ft]	Vert Sect [ft]	North [ft]	East [ft]	Grid East [US ft]	Grid North [US ft]	Latitude	Longitude	Closure Dist [ft]	Closure Dir [°]	DLS [°/100ft]	Build Rate [°/100ft]	Turn Rate [°/100ft]
2989.00	5.150	309.570	2988.43	-21.36	14.49	-17.49	1698770.51	400752.93	39°35'43.3661"N	80°34'8.2992"W	22.71	309.640	0.05	0.04	-0.29
3083.00	4.210	299.860	3082.12	-28.32	18.90	-23.74	1698764.27	400757.33	39°35'43.4089"N	80°34'8.3796"W	30.34	308.524	1.30	-1.00	-10.33
3177.00	3.800	293.260	3175.89	-33.83	21.84	-29.59	1698758.41	400760.28	39°35'43.4373"N	80°34'8.4548"W	36.78	306.436	0.66	-0.44	-7.02
3271.00	3.630	286.820	3269.69	-38.52	23.94	-35.30	1698752.70	400762.37	39°35'43.4573"N	80°34'8.5281"W	42.65	304.139	0.48	-0.18	-6.85
3364.00	3.330	281.970	3362.52	-42.51	25.35	-40.76	1698747.24	400763.79	39°35'43.4706"N	80°34'8.5981"W	48.00	301.876	0.45	-0.32	-5.22
3459.00	3.440	288.280	3457.36	-46.51	26.81	-46.17	1698741.84	400765.25	39°35'43.4845"N	80°34'8.6673"W	53.39	300.149	0.41	0.12	6.64
3554.00	3.950	293.740	3552.16	-51.31	29.02	-51.87	1698736.14	400767.46	39°35'43.5057"N	80°34'8.7405"W	59.44	299.231	0.65	0.54	5.75
3648.00	4.150	292.650	3645.93	-56.65	31.64	-57.97	1698730.03	400770.08	39°35'43.5308"N	80°34'8.8188"W	66.04	298.624	0.23	0.21	-1.16
3742.00	4.350	293.030	3739.67	-62.24	34.34	-64.39	1698723.61	400772.78	39°35'43.5568"N	80°34'8.9012"W	72.98	298.074	0.21	0.21	0.40
3836.00	4.330	290.910	3833.40	-67.87	37.00	-70.99	1698717.02	400775.44	39°35'43.5823"N	80°34'8.9859"W	80.05	297.532	0.17	-0.02	-2.26
3931.00	4.620	287.950	3928.11	-73.54	39.46	-77.98	1698710.03	400777.90	39°35'43.6058"N	80°34'9.0756"W	87.39	296.844	0.39	0.31	-3.12
4024.00	4.760	285.350	4020.80	-79.10	41.64	-85.26	1698702.75	400780.08	39°35'43.6264"N	80°34'9.1689"W	94.88	296.030	0.27	0.15	-2.80
4119.00	4.150	286.400	4115.51	-84.44	43.65	-92.36	1698695.65	400782.09	39°35'43.6455"N	80°34'9.2599"W	102.15	295.298	0.65	-0.64	1.11
4214.00	4.070	285.580	4210.26	-89.37	45.53	-98.90	1698689.10	400783.97	39°35'43.6632"N	80°34'9.3438"W	108.88	294.718	0.10	-0.08	-0.86
4310.00	3.870	293.360	4306.04	-94.44	47.73	-105.16	1698682.85	400786.17	39°35'43.6842"N	80°34'9.4240"W	115.48	294.412	0.60	-0.21	8.10
4405.00	3.630	297.890	4400.83	-99.59	50.41	-110.76	1698677.25	400788.84	39°35'43.7100"N	80°34'9.4960"W	121.69	294.470	0.40	-0.25	4.77
4497.00	3.410	300.910	4492.66	-104.47	53.17	-115.68	1698672.33	400791.61	39°35'43.7368"N	80°34'9.5593"W	127.32	294.686	0.31	-0.24	3.28
4592.00	3.040	304.450	4587.51	-109.23	56.05	-120.18	1698667.82	400794.49	39°35'43.7647"N	80°34'9.6172"W	132.61	295.003	0.44	-0.39	3.73
4684.00	2.530	313.680	4679.40	-113.39	58.83	-123.66	1698664.34	400797.27	39°35'43.7918"N	80°34'9.6621"W	136.94	295.443	0.74	-0.55	10.03
4778.00	2.860	315.370	4773.30	-117.66	61.93	-126.81	1698661.20	400800.37	39°35'43.8221"N	80°34'9.7028"W	141.13	296.031	0.36	0.35	1.80
4873.00	2.710	317.020	4868.18	-122.15	65.26	-130.01	1698658.00	400803.70	39°35'43.8546"N	80°34'9.7441"W	145.47	296.657	0.18	-0.16	1.74
4969.00	2.150	329.310	4964.10	-126.16	68.47	-132.47	1698655.53	400806.91	39°35'43.8860"N	80°34'9.7761"W	149.12	297.334	0.79	-0.58	12.80
5064.00	2.650	322.830	5059.01	-130.13	71.76	-134.71	1698653.30	400810.19	39°35'43.9182"N	80°34'9.8052"W	152.63	298.043	0.60	0.53	-6.82
5157.00	3.430	313.600	5151.88	-134.94	75.39	-138.02	1698649.98	400813.82	39°35'43.9537"N	80°34'9.8480"W	157.27	298.643	0.99	0.84	-9.92
5252.00	3.750	311.780	5246.70	-140.63	79.42	-142.40	1698645.61	400817.85	39°35'43.9930"N	80°34'9.9045"W	163.05	299.149	0.36	0.34	-1.92
5345.00	3.890	308.130	5339.49	-146.46	83.39	-147.15	1698640.86	400821.83	39°35'44.0317"N	80°34'9.9658"W	169.13	299.541	0.30	0.15	-3.92
5440.00	4.480	297.140	5434.24	-152.59	87.07	-152.98	1698635.02	400825.51	39°35'44.0674"N	80°34'10.0409"W	176.03	299.647	1.05	0.62	-11.57
5535.00	4.650	293.860	5528.94	-158.85	90.32	-159.81	1698628.20	400828.76	39°35'44.0988"N	80°34'10.1286"W	183.57	299.475	0.33	0.18	-3.45
5631.00	5.200	294.110	5624.58	-165.56	93.67	-167.34	1698620.67	400832.11	39°35'44.1310"N	80°34'10.2253"W	191.77	299.240	0.57	0.57	0.26
5725.00	5.160	292.710	5718.20	-172.41	97.05	-175.13	1698612.89	400835.48	39°35'44.1634"N	80°34'10.3252"W	200.22	298.993	0.14	-0.04	-1.49

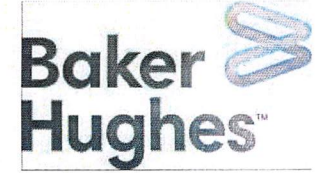


RECEIVED
Office of Oil and Gas
JAN 22 2024

Actual Wellpath Report

BIG 245 108H AWP Proj: 26062'

Page 5 of 14



REFERENCE WELLPATH IDENTIFICATION			
Operator	EQT PRODUCTION COMPANY	Well	BIG 245 108H (L-003000)
Field	Wetzel	API	47-103-03443-00-00
Facility	Big 245 Pad	Wellbore	BIG 245 108H AWB
Slot	Slot #108		

WELLPATH DATA (303 stations)															
MD [ft]	Inclination [°]	Azimuth [°]	TVD [ft]	Vert Sect [ft]	North [ft]	East [ft]	Grid East [US ft]	Grid North [US ft]	Latitude	Longitude	Closure Dist [ft]	Closure Dir [°]	DLS [°/100ft]	Build Rate [°/100ft]	Turn Rate [°/100ft]
5821.00	5.140	290.960	5813.81	-179.23	100.25	-183.12	1698604.89	400838.69	39°35'44.1941"N	80°34'10.4279"W	208.77	298.699	0.16	-0.02	-1.82
5916.00	4.340	292.250	5908.48	-185.41	103.14	-190.42	1698597.59	400841.57	39°35'44.2218"N	80°34'10.5216"W	216.56	298.440	0.85	-0.84	1.36
6011.00	4.310	291.390	6003.21	-191.08	105.80	-197.07	1698590.94	400844.23	39°35'44.2473"N	80°34'10.6069"W	223.68	298.229	0.08	-0.03	-0.91
6106.00	4.450	292.870	6097.94	-196.84	108.53	-203.79	1698584.22	400846.97	39°35'44.2735"N	80°34'10.6932"W	230.89	298.038	0.19	0.15	1.56
6201.00	4.650	293.220	6192.64	-202.90	111.48	-210.73	1698577.28	400849.92	39°35'44.3019"N	80°34'10.7822"W	238.40	297.880	0.21	0.21	0.37
6295.00	5.090	296.020	6286.30	-209.45	114.81	-217.98	1698570.04	400853.25	39°35'44.3339"N	80°34'10.8753"W	246.37	297.777	0.53	0.47	2.98
6389.00	5.080	293.220	6379.93	-216.28	118.28	-225.55	1698562.46	400856.72	39°35'44.3674"N	80°34'10.9726"W	254.68	297.674	0.26	-0.01	-2.98
6484.00	5.550	290.080	6474.52	-223.21	121.52	-233.73	1698554.28	400859.95	39°35'44.4258"N	80°34'11.0775"W	263.43	297.471	0.58	0.49	-3.31
6579.00	4.960	288.460	6569.12	-229.85	124.40	-241.94	1698546.07	400862.83	39°35'44.4258"N	80°34'11.1829"W	272.05	297.211	0.64	-0.62	-1.71
6672.00	4.620	289.160	6661.79	-235.73	126.90	-249.29	1698538.72	400865.33	39°35'44.4497"N	80°34'11.2771"W	279.73	296.978	0.37	-0.37	0.75
6767.00	4.720	288.250	6756.48	-241.58	129.38	-256.62	1698531.40	400867.81	39°35'44.4733"N	80°34'11.3711"W	287.39	296.756	0.13	0.11	-0.96
6821.00	4.990	287.980	6810.29	-245.01	130.80	-260.96	1698527.05	400869.23	39°35'44.4869"N	80°34'11.4268"W	291.91	296.621	0.50	0.50	-0.50
6877.00	5.400	287.750	6866.06	-248.80	132.36	-265.79	1698522.23	400870.79	39°35'44.5017"N	80°34'11.4887"W	296.92	296.472	0.73	0.73	-0.41
6972.00	6.360	219.130	6960.66	-250.30	129.63	-273.37	1698514.64	400868.07	39°35'44.4739"N	80°34'11.5852"W	302.55	295.370	7.02	1.01	-72.23
7068.00	13.150	174.210	7055.33	-238.49	114.61	-275.63	1698512.38	400853.04	39°35'44.3251"N	80°34'11.6117"W	298.51	292.578	10.13	7.07	-46.79
7162.00	21.840	154.750	7144.97	-211.28	88.08	-267.07	1698520.94	400826.52	39°35'44.0640"N	80°34'11.4984"W	281.22	288.253	11.03	9.24	-20.70
7257.00	31.410	147.270	7229.82	-168.84	51.18	-246.10	1698541.92	400789.62	39°35'43.7018"N	80°34'11.2248"W	251.36	281.748	10.66	10.07	-7.87
7353.00	41.370	144.420	7307.01	-112.10	4.21	-214.03	1698573.98	400742.65	39°35'43.2414"N	80°34'10.8081"W	214.07	271.128	10.52	10.37	-2.97
7448.00	49.300	143.730	7373.74	-44.90	-50.44	-174.40	1698613.62	400688.00	39°35'42.7060"N	80°34'10.2935"W	181.54	253.869	8.36	8.35	-0.73
7543.00	57.400	143.200	7430.40	30.82	-111.62	-129.05	1698658.96	400626.83	39°35'42.1067"N	80°34'9.7049"W	170.62	229.142	8.54	8.53	-0.56
7638.00	65.300	148.790	7475.94	113.93	-180.72	-82.61	1698705.39	400557.73	39°35'41.4292"N	80°34'9.1013"W	198.71	204.566	9.78	8.32	5.88
7733.00	77.090	148.950	7506.51	203.69	-257.57	-36.20	1698751.80	400480.89	39°35'40.6753"N	80°34'8.4969"W	260.10	188.001	12.41	12.41	0.17
7829.00	79.630	147.720	7525.88	297.69	-337.58	13.15	1698801.15	400400.88	39°35'39.8903"N	80°34'7.8542"W	337.84	177.769	2.93	2.65	-1.28
7923.00	84.640	150.210	7538.74	390.76	-417.34	61.13	1698849.13	400321.12	39°35'39.1077"N	80°34'7.2293"W	421.80	171.667	5.94	5.33	2.65
8019.00	87.880	150.220	7545.00	486.54	-500.47	108.71	1698896.70	400238.00	39°35'38.2918"N	80°34'6.6089"W	512.14	167.745	3.38	3.37	0.01
8114.00	86.180	150.680	7548.26	581.47	-583.07	155.53	1698943.52	400155.41	39°35'37.4811"N	80°34'5.9983"W	603.46	165.064	0.58	0.32	0.48
8208.00	90.650	152.360	7549.22	675.40	-665.68	200.35	1698988.34	400072.80	39°35'36.6699"N	80°34'5.4133"W	695.18	163.250	3.18	2.63	1.79
8304.00	89.010	152.600	7549.51	771.27	-750.81	244.71	1699032.69	399987.67	39°35'35.8338"N	80°34'4.8338"W	789.68	161.948	1.73	-1.71	0.25
8399.00	89.260	152.740	7550.94	866.12	-835.20	288.32	1699076.30	399903.29	39°35'35.0050"N	80°34'4.2640"W	883.56	160.955	0.30	0.26	0.15
8494.00	92.060	152.520	7549.85	960.96	-919.55	331.98	1699119.96	399818.95	39°35'34.1765"N	80°34'3.6934"W	977.64	160.149	2.96	2.95	-0.23



RECEIVED
Office of Oil and Gas
JAN 22 2024
WV Department
Environmental

Actual Wellpath Report

BIG 245 108H AWP Proj: 26062'

Page 6 of 14



REFERENCE WELLPATH IDENTIFICATION

Operator	EQT PRODUCTION COMPANY	Well	BIG 245 108H (L-003000)
Field	Wetzel	API	47-103-03443-00-00
Facility	Big 245 Pad	Wellbore	BIG 245 108H AWB
Slot	Slot #108		

WELLPATH DATA (303 stations)

MD [ft]	Inclination [°]	Azimuth [°]	TVD [ft]	Vert Sect [ft]	North [ft]	East [ft]	Grid East [US ft]	Grid North [US ft]	Latitude	Longitude	Closure Dist [ft]	Closure Dir [°]	DLS [°/100ft]	Build Rate [°/100ft]	Turn Rate [°/100ft]
8588.00	89.110	149.340	7548.89	1054.91	-1001.69	377.64	1699165.62	399736.82	39°35'33.3702"N	80°34'3.0977"W	1070.51	159.343	4.61	-3.14	-3.38
8683.00	87.970	149.060	7551.31	1149.88	-1083.26	426.27	1699214.25	399655.25	39°35'32.5697"N	80°34'2.4642"W	1164.11	158.520	1.24	-1.20	-0.29
8779.00	88.580	147.960	7554.20	1245.81	-1165.08	476.39	1699264.37	399573.43	39°35'31.7670"N	80°34'1.8116"W	1258.72	157.761	1.31	0.64	-1.15
8874.00	89.260	147.720	7555.99	1340.75	-1245.49	526.95	1699314.92	399493.03	39°35'30.9783"N	80°34'1.1537"W	1352.38	157.067	0.76	0.72	-0.25
8969.00	88.770	145.570	7557.62	1435.61	-1324.83	579.17	1699367.14	399413.70	39°35'30.2004"N	80°34'0.4746"W	1445.89	156.386	2.32	-0.52	-2.26
9064.00	88.490	146.610	7559.89	1530.41	-1403.64	632.16	1699420.12	399334.88	39°35'29.4277"N	80°33'59.7859"W	1539.43	155.755	1.13	-0.29	1.09
9159.00	86.370	148.860	7564.15	1625.26	-1483.88	682.82	1699470.77	399254.65	39°35'28.6407"N	80°33'59.1267"W	1633.45	155.290	3.25	-2.23	2.37
9254.00	88.950	151.040	7568.03	1720.16	-1566.03	730.34	1699518.30	399172.50	39°35'27.8344"N	80°33'58.5073"W	1727.96	154.997	3.55	2.72	2.29
9349.00	89.970	148.810	7568.93	1815.15	-1648.23	777.94	1699565.89	399090.31	39°35'27.0276"N	80°33'57.8868"W	1822.60	154.733	2.58	1.07	-2.35
9444.00	89.880	147.920	7569.05	1910.13	-1729.12	827.77	1699615.72	399009.43	39°35'26.2341"N	80°33'57.2381"W	1917.04	154.418	0.94	-0.09	-0.94
9538.00	87.470	148.330	7571.23	2004.06	-1808.92	877.39	1699665.34	398929.64	39°35'25.4513"N	80°33'56.5922"W	2010.47	154.125	2.60	-2.56	0.44
9633.00	90.400	149.350	7572.99	2099.03	-1890.19	926.53	1699714.48	398848.37	39°35'24.6540"N	80°33'55.9523"W	2105.06	153.887	3.27	3.08	1.07
9729.00	89.380	149.950	7573.18	2195.03	-1973.03	975.04	1699762.98	398765.53	39°35'23.8410"N	80°33'55.3202"W	2200.80	153.702	1.23	-1.06	0.62
9823.00	88.980	148.600	7574.52	2289.01	-2053.82	1023.06	1699811.00	398684.74	39°35'23.0481"N	80°33'54.6946"W	2294.52	153.521	1.50	-0.43	-1.44
9918.00	88.740	148.280	7576.41	2383.98	-2134.75	1072.77	1699860.71	398603.82	39°35'22.2541"N	80°33'54.0474"W	2389.15	153.319	0.42	-0.25	-0.34
10013.00	89.350	149.070	7578.00	2478.95	-2215.89	1122.15	1699910.08	398522.68	39°35'21.4581"N	80°33'53.4044"W	2483.83	153.142	1.05	0.64	0.83
10108.00	90.000	149.910	7578.53	2573.95	-2297.47	1170.38	1699958.31	398440.84	39°35'20.6549"N	80°33'52.7761"W	2578.64	153.007	1.12	0.68	0.88
10203.00	90.280	148.800	7578.30	2668.95	-2379.47	1218.80	1700006.73	398359.12	39°35'19.8528"N	80°33'52.1452"W	2673.45	152.878	1.21	0.29	-1.17
10298.00	90.550	148.870	7577.61	2763.94	-2460.76	1267.97	1700055.89	398277.83	39°35'19.0553"N	80°33'51.5050"W	2768.22	152.739	0.29	0.28	0.07
10393.00	89.260	148.550	7577.77	2858.92	-2541.94	1317.30	1700105.22	398196.66	39°35'18.2588"N	80°33'50.8626"W	2862.99	152.606	1.40	-1.36	-0.34
10488.00	90.580	150.420	7577.90	2953.92	-2623.77	1365.54	1700153.46	398114.83	39°35'17.4557"N	80°33'50.2342"W	2957.85	152.505	2.41	1.39	1.97
10583.00	88.520	148.640	7578.65	3048.91	-2705.64	1413.71	1700201.62	398032.96	39°35'16.6522"N	80°33'49.6066"W	3052.72	152.413	2.87	-2.17	-1.87
10678.00	90.430	150.640	7579.52	3143.89	-2787.60	1461.71	1700249.63	397951.01	39°35'15.8479"N	80°33'48.9810"W	3147.59	152.329	2.91	2.01	2.11
10773.00	89.970	149.110	7579.19	3238.89	-2869.77	1509.39	1700297.30	397868.85	39°35'15.0415"N	80°33'48.3597"W	3242.51	152.257	1.68	-0.48	-1.61
10868.00	89.630	149.360	7579.52	3333.88	-2951.40	1557.99	1700345.89	397787.22	39°35'14.2404"N	80°33'47.7267"W	3337.38	152.171	0.44	-0.36	0.26
10963.00	89.540	148.800	7580.21	3428.88	-3032.90	1606.80	1700394.70	397705.73	39°35'13.4407"N	80°33'47.0909"W	3432.24	152.086	0.60	-0.09	-0.59
11153.00	88.860	148.800	7582.86	3618.84	-3195.40	1705.21	1700493.11	397543.24	39°35'11.8463"N	80°33'45.8094"W	3621.92	151.914	0.36	-0.36	0.00
11248.00	88.950	148.880	7584.68	3713.82	-3276.68	1754.36	1700542.25	397461.96	39°35'11.0488"N	80°33'45.1695"W	3716.77	151.835	0.13	0.09	0.08
11343.00	89.080	148.830	7586.31	3808.80	-3357.97	1803.49	1700591.38	397380.67	39°35'10.2512"N	80°33'44.5298"W	3811.63	151.761	0.15	0.14	-0.05
11438.00	89.510	149.270	7587.48	3903.79	-3439.44	1852.34	1700640.23	397299.21	39°35'9.4518"N	80°33'43.8935"W	3906.52	151.695	0.65	0.45	0.46



RECEIVED
Office of Oil and Gas

JAN 22 2024

WV Dept
Energy

Actual Wellpath Report

BIG 245 108H AWP Proj: 26062'

Page 7 of 14



REFERENCE WELLPATH IDENTIFICATION

Operator	EQT PRODUCTION COMPANY	Well	BIG 245 108H (L-003000)
Field	Wetzel	API	47-103-03443-00-00
Facility	Big 245 Pad	Wellbore	BIG 245 108H AWB
Slot	Slot #108		

WELLPATH DATA (303 stations)

MD [ft]	Inclination [°]	Azimuth [°]	TVD [ft]	Vert Sect [ft]	North [ft]	East [ft]	Grid East [US ft]	Grid North [US ft]	Latitude	Longitude	Closure Dist [ft]	Closure Dir [°]	DLS [°/100ft]	Build Rate [°/100ft]	Turn Rate [°/100ft]
11533.00	89.750	148.810	7588.09	3998.78	-3520.90	1901.21	1700689.10	397217.75	39°35'8.6524"N	80°33'43.2571"W	4001.42	151.632	0.55	0.25	-0.48
11628.00	89.750	149.100	7588.51	4093.77	-3602.29	1950.21	1700738.09	397136.37	39°35'7.8538"N	80°33'42.6191"W	4096.32	151.570	0.31	0.00	0.31
11723.00	89.450	149.640	7589.17	4188.77	-3684.04	1998.61	1700786.48	397054.63	39°35'7.0516"N	80°33'41.9886"W	4191.25	151.520	0.65	-0.32	0.57
11818.00	86.980	148.360	7592.13	4283.71	-3765.42	2047.50	1700835.38	396973.25	39°35'6.2531"N	80°33'41.3518"W	4286.10	151.464	2.93	-2.60	-1.35
11913.00	89.380	151.030	7595.15	4378.65	-3847.39	2095.41	1700883.28	396891.29	39°35'5.4486"N	80°33'40.7276"W	4380.99	151.426	3.78	2.53	2.81
12008.00	89.350	148.580	7596.20	4473.63	-3929.48	2143.18	1700931.05	396809.20	39°35'4.6429"N	80°33'40.1051"W	4475.94	151.391	2.58	-0.03	-2.58
12102.00	89.230	149.160	7597.36	4567.62	-4091.34	2191.77	1700979.64	396728.74	39°35'3.8534"N	80°33'39.4724"W	4569.85	151.340	0.63	-0.13	0.62
12197.00	89.780	148.780	7598.19	4662.61	-4091.34	2240.74	1701028.61	396647.35	39°35'3.0547"N	80°33'38.8347"W	4664.76	151.291	0.70	0.58	-0.40
12293.00	88.740	149.730	7599.43	4758.60	-4173.84	2289.82	1701077.68	396564.85	39°35'2.2451"N	80°33'38.1956"W	4760.69	151.250	1.47	-1.08	0.99
12388.00	90.430	148.640	7600.11	4853.59	-4255.42	2338.48	1701126.33	396483.28	39°35'1.4446"N	80°33'37.5618"W	4855.63	151.210	2.12	1.78	-1.15
12482.00	89.970	149.580	7599.79	4947.58	-4336.09	2386.73	1701174.59	396402.62	39°35'0.6530"N	80°33'36.9333"W	4949.56	151.170	1.11	-0.49	1.00
12577.00	89.570	148.080	7600.17	5042.57	-4417.37	2435.90	1701223.75	396321.34	39°34'59.8555"N	80°33'36.2931"W	5044.48	151.126	1.63	-0.42	-1.58
12672.00	91.350	150.780	7599.40	5137.56	-4499.15	2484.21	1701272.06	396239.56	39°34'59.0529"N	80°33'35.6639"W	5139.42	151.095	3.40	1.87	2.84
12767.00	89.110	148.690	7599.02	5232.54	-4581.19	2532.09	1701319.93	396157.53	39°34'58.2477"N	80°33'35.0401"W	5234.39	151.070	3.22	-2.36	-2.20
12862.00	90.980	148.610	7598.95	5327.53	-4662.32	2581.51	1701369.35	396076.40	39°34'57.4517"N	80°33'34.3967"W	5329.30	151.027	1.97	1.97	-0.08
12957.00	89.910	147.030	7598.21	5422.48	-4742.72	2632.10	1701419.94	395996.01	39°34'56.6631"N	80°33'33.7385"W	5424.15	150.971	2.01	-1.13	-1.66
13052.00	89.600	149.190	7598.62	5517.44	-4823.38	2682.28	1701470.12	395915.36	39°34'55.8718"N	80°33'33.0854"W	5519.02	150.922	2.30	-0.33	2.27
13147.00	89.970	145.890	7598.97	5612.37	-4903.52	2733.26	1701521.10	395835.22	39°34'55.0857"N	80°33'32.4223"W	5613.85	150.864	3.50	0.39	-3.47
13242.00	87.630	148.010	7600.96	5707.24	-4983.12	2785.06	1701572.89	395755.62	39°34'54.3051"N	80°33'31.7489"W	5708.60	150.799	3.32	-2.46	2.23
13337.00	89.200	150.370	7603.59	5802.19	-5064.68	2833.69	1701621.52	395674.07	39°34'53.5048"N	80°33'31.1155"W	5803.51	150.773	2.98	1.65	2.48
13432.00	90.680	148.820	7603.69	5897.18	-5146.61	2881.77	1701669.59	395592.15	39°34'52.7007"N	80°33'30.4892"W	5898.49	150.754	2.26	1.56	-1.63
13527.00	89.420	148.450	7603.61	5992.17	-5227.72	2931.21	1701719.03	395511.04	39°34'51.9049"N	80°33'29.8455"W	5993.42	150.720	1.38	-1.33	-0.39
13622.00	90.340	148.580	7603.81	6087.15	-5308.73	2980.83	1701768.65	395430.03	39°34'51.1100"N	80°33'29.1997"W	6088.35	150.686	0.98	0.97	0.14
13717.00	89.850	149.320	7603.65	6182.15	-5390.12	3029.83	1701817.64	395348.65	39°34'50.3114"N	80°33'28.5617"W	6183.31	150.659	0.93	-0.52	0.78
13811.00	89.230	149.270	7604.40	6276.14	-5470.94	3077.82	1701865.64	395267.83	39°34'49.5183"N	80°33'27.9366"W	6277.28	150.639	0.66	-0.66	-0.05
13906.00	90.000	149.620	7605.04	6371.14	-5552.75	3126.12	1701913.93	395186.03	39°34'48.7155"N	80°33'27.3076"W	6372.25	150.621	0.89	0.81	0.37
14001.00	89.720	148.980	7605.27	6466.14	-5634.43	3174.62	1701962.42	395104.35	39°34'47.9139"N	80°33'26.6759"W	6467.23	150.602	0.74	-0.29	-0.67
14096.00	89.510	148.170	7605.91	6561.12	-5715.50	3224.15	1702011.95	395023.29	39°34'47.1185"N	80°33'26.0312"W	6562.17	150.572	0.88	-0.22	-0.85
14191.00	88.610	150.020	7607.47	6656.10	-5796.99	3272.93	1702060.73	394941.80	39°34'46.3188"N	80°33'25.3960"W	6657.12	150.551	2.17	-0.95	1.95
14286.00	90.770	150.150	7607.98	6751.09	-5879.33	3320.31	1702108.10	394859.47	39°34'45.5106"N	80°33'24.7786"W	6752.11	150.545	2.28	2.27	0.14



RECEIVED
Office of Oil and Gas
JAN 22 2024
WV Department of Environmental Protection

Actual Wellpath Report

BIG 245 108H AWP Proj: 26062'

Page 8 of 14



REFERENCE WELLPATH IDENTIFICATION			
Operator	EQT PRODUCTION COMPANY	Well	BIG 245 108H (L-003000)
Field	Wetzel	API	47-103-03443-00-00
Facility	Big 245 Pad	Wellbore	BIG 245 108H AWB
Slot	Slot #108		

WELLPATH DATA (303 stations)

MD [ft]	Inclination [°]	Azimuth [°]	TVD [ft]	Vert Sect [ft]	North [ft]	East [ft]	Grid East [US ft]	Grid North [US ft]	Latitude	Longitude	Closure Dist [ft]	Closure Dir [°]	DLS [°/100ft]	Build Rate [°/100ft]	Turn Rate [°/100ft]
14381.00	89.080	149.010	7608.11	6846.08	-5961.25	3368.41	1702156.20	394777.56	39°34'44.7066"N	80°33'24.1521"W	6847.09	150.531	2.15	-1.78	-1.20
14476.00	90.550	149.440	7608.42	6941.08	-6042.87	3417.01	1702204.80	394695.94	39°34'43.9057"N	80°33'23.5191"W	6942.06	150.513	1.61	1.55	0.45
14571.00	89.880	148.150	7608.06	7036.07	-6124.12	3466.23	1702254.02	394614.70	39°34'43.1084"N	80°33'22.8784"W	7037.02	150.490	1.53	-0.71	-1.36
14666.00	90.180	148.900	7608.01	7131.05	-6205.14	3515.83	1702303.62	394533.68	39°34'42.3135"N	80°33'22.2328"W	7131.96	150.464	0.85	0.32	0.79
14761.00	90.000	148.880	7607.86	7226.05	-6286.48	3564.92	1702352.70	394452.35	39°34'41.5154"N	80°33'21.5937"W	7226.92	150.443	0.19	-0.19	-0.02
14856.00	88.980	149.100	7608.71	7321.04	-6367.89	3613.86	1702401.64	394370.93	39°34'40.7164"N	80°33'20.9565"W	7321.89	150.425	1.10	-1.07	0.23
14951.00	89.540	149.150	7609.93	7416.02	-6449.43	3662.60	1702450.38	394289.41	39°34'39.9164"N	80°33'20.3218"W	7416.86	150.408	0.59	0.59	0.05
15047.00	88.950	148.630	7611.20	7512.01	-6531.61	3712.20	1702499.97	394207.23	39°34'39.1099"N	80°33'19.6761"W	7512.81	150.389	0.82	-0.61	-0.54
15142.00	91.230	150.550	7611.05	7607.00	-6613.53	3760.28	1702548.05	394125.31	39°34'38.3059"N	80°33'19.0498"W	7607.79	150.379	3.14	2.40	2.02
15236.00	88.980	147.540	7610.88	7700.98	-6694.13	3808.62	1702596.39	394044.72	39°34'37.5150"N	80°33'18.4204"W	7701.75	150.362	4.00	-2.39	-3.20
15331.00	89.110	149.200	7612.46	7795.94	-6775.00	3858.44	1702646.20	393963.85	39°34'36.7216"N	80°33'17.7722"W	7796.68	150.338	1.75	0.14	1.75
15426.00	90.830	148.020	7612.51	7890.92	-6856.09	3907.92	1702695.68	393882.77	39°34'35.9259"N	80°33'17.1282"W	7891.63	150.317	2.20	1.81	-1.24
15520.00	88.650	146.520	7612.94	7984.84	-6935.16	3958.74	1702746.49	393803.70	39°34'35.1504"N	80°33'16.4674"W	7985.49	150.281	2.82	-2.32	-1.60
15615.00	88.120	148.720	7615.61	8079.74	-7015.35	4009.59	1702797.34	393723.52	39°34'34.3638"N	80°33'15.8060"W	8080.34	150.250	2.38	-0.56	2.32
15710.00	88.310	148.480	7618.57	8174.68	-7096.40	4059.06	1702846.81	393642.47	39°34'33.5686"N	80°33'15.1621"W	8175.26	150.231	0.32	0.20	-0.25
15805.00	89.630	149.650	7620.28	8269.66	-7177.87	4107.89	1702895.63	393561.01	39°34'32.7692"N	80°33'14.5264"W	8270.22	150.218	1.86	1.39	1.23
15900.00	88.950	148.310	7621.46	8364.65	-7259.28	4156.84	1702944.58	393479.61	39°34'31.9703"N	80°33'13.8891"W	8365.19	150.204	1.58	-0.72	-1.41
15995.00	89.570	149.550	7622.69	8459.63	-7340.64	4205.86	1702993.60	393398.25	39°34'31.1720"N	80°33'13.2509"W	8460.16	150.189	1.46	0.65	1.31
16090.00	89.480	149.680	7623.47	8554.63	-7422.59	4253.91	1703041.65	393316.31	39°34'30.3677"N	80°33'12.6250"W	8555.15	150.183	0.17	-0.09	0.14
16186.00	89.970	148.550	7623.93	8650.62	-7504.97	4303.19	1703090.92	393233.93	39°34'29.5592"N	80°33'11.9835"W	8651.13	150.171	1.28	0.51	-1.18
16280.00	89.690	149.640	7624.21	8744.62	-7585.62	4351.47	1703139.20	393153.28	39°34'28.7677"N	80°33'11.3549"W	8745.11	150.159	1.20	-0.30	1.16
16376.00	90.980	148.970	7623.65	8840.61	-7668.17	4400.47	1703188.20	393070.74	39°34'27.9577"N	80°33'10.7168"W	8841.10	150.150	1.51	1.34	-0.70
16471.00	89.940	148.890	7622.89	8935.60	-7749.54	4449.49	1703237.22	392989.38	39°34'27.1592"N	80°33'10.0786"W	8936.07	150.137	1.10	-1.09	-0.08
16566.00	90.400	148.610	7622.61	9030.59	-7830.75	4498.78	1703286.50	392908.16	39°34'26.3623"N	80°33'9.4371"W	9031.04	150.123	0.57	0.48	-0.29
16661.00	89.750	148.900	7622.48	9125.58	-7911.97	4548.05	1703335.78	392826.95	39°34'25.5653"N	80°33'8.7957"W	9126.01	150.108	0.75	-0.68	0.31
16756.00	90.030	148.670	7622.66	9220.57	-7993.22	4597.29	1703385.01	392745.71	39°34'24.7681"N	80°33'8.1549"W	9220.99	150.095	0.38	0.29	-0.24
16851.00	88.280	149.170	7624.07	9315.55	-8074.57	4646.32	1703434.04	392664.36	39°34'23.9699"N	80°33'7.5166"W	9315.95	150.083	1.92	-1.84	0.53
16947.00	90.400	148.270	7625.17	9411.53	-8156.61	4696.16	1703483.87	392582.33	39°34'23.1649"N	80°33'6.8679"W	9411.91	150.069	2.40	2.21	-0.94
17041.00	88.460	147.730	7626.11	9505.48	-8236.31	4745.97	1703533.68	392502.63	39°34'22.3829"N	80°33'6.2200"W	9505.84	150.048	2.14	-2.06	-0.57
17136.00	88.920	147.950	7628.28	9600.42	-8316.72	4796.52	1703584.23	392422.23	39°34'21.5942"N	80°33'5.5624"W	9600.75	150.027	0.54	0.48	0.23



RECEIVED
Office of Oil and Gas
JAN 22 2024
WV Department
Environmental Protection

Actual Wellpath Report

BIG 245 108H AWP Proj: 26062'

Page 9 of 14



REFERENCE WELLPATH IDENTIFICATION

Operator	EQT PRODUCTION COMPANY	Well	BIG 245 108H (L-003000)
Field	Wetzel	API	47-103-03443-00-00
Facility	Big 245 Pad	Wellbore	BIG 245 108H AWB
Slot	Slot #108		

WELLPATH DATA (303 stations)

MD [ft]	Inclination [°]	Azimuth [°]	TVD [ft]	Vert Sect [ft]	North [ft]	East [ft]	Grid East [US ft]	Grid North [US ft]	Latitude	Longitude	Closure Dist [ft]	Closure Dir [°]	DLS [°/100ft]	Build Rate [°/100ft]	Turn Rate [°/100ft]
17231.00	90.860	148.710	7628.46	9695.39	-8397.56	4846.40	1703634.10	392341.39	39°34'20.8010"N	80°33'4.9135"W	9695.70	150.010	2.19	2.04	0.80
17326.00	88.890	148.650	7628.67	9790.37	-8478.72	4895.78	1703683.48	392260.24	39°34'20.0047"N	80°33'4.2708"W	9790.67	149.997	2.07	-2.07	-0.06
17421.00	89.350	148.860	7630.13	9885.35	-8559.93	4945.05	1703732.74	392179.04	39°34'19.2078"N	80°33'3.6296"W	9885.64	149.985	0.53	0.48	0.22
17516.00	88.680	149.030	7631.76	9980.33	-8641.30	4994.05	1703781.74	392097.67	39°34'18.4093"N	80°33'2.9917"W	9980.61	149.975	0.73	-0.71	0.18
17612.00	88.890	147.790	7633.80	10076.29	-8723.05	5044.32	1703832.01	392015.92	39°34'17.6072"N	80°33'2.3375"W	10076.55	149.960	1.31	0.22	-1.29
17707.00	89.510	149.260	7635.12	10171.26	-8804.07	5093.92	1703881.61	391934.91	39°34'16.8123"N	80°33'1.6922"W	10171.51	149.947	1.68	0.65	1.55
17802.00	88.280	148.210	7636.95	10266.23	-8885.25	5143.21	1703930.90	391853.73	39°34'16.0157"N	80°33'1.0506"W	10266.47	149.936	1.70	-1.29	-1.11
17896.00	90.000	149.290	7638.37	10360.21	-8965.60	5191.97	1703979.65	391773.39	39°34'15.2273"N	80°33'0.4161"W	10360.43	149.925	2.16	1.83	1.15
18087.00	89.230	149.110	7639.65	10551.20	-9129.66	5289.77	1704077.44	391609.34	39°34'13.6173"N	80°32'59.1428"W	10551.41	149.912	0.41	-0.40	-0.09
18182.00	89.720	148.840	7640.52	10646.19	-9211.06	5338.73	1704126.40	391527.94	39°34'12.8184"N	80°32'58.5055"W	10646.39	149.903	0.59	0.52	-0.28
18277.00	90.090	149.280	7640.68	10741.19	-9292.54	5387.57	1704175.24	391446.46	39°34'12.0188"N	80°32'57.8697"W	10741.38	149.896	0.61	0.39	0.46
18372.00	88.770	148.440	7641.62	10836.17	-9373.85	5436.69	1704224.36	391365.16	39°34'11.2210"N	80°32'57.2303"W	10836.36	149.887	1.65	-1.39	-0.88
18467.00	89.880	148.990	7642.74	10931.15	-9455.03	5486.02	1704273.69	391283.99	39°34'10.4244"N	80°32'56.5883"W	10931.33	149.877	1.30	1.17	0.58
18563.00	89.910	149.070	7642.92	11027.15	-9537.34	5535.42	1704323.08	391201.68	39°34'9.6167"N	80°32'55.9453"W	11027.32	149.869	0.09	0.03	0.08
18657.00	89.600	148.530	7643.32	11121.14	-9617.74	5584.12	1704371.78	391121.28	39°34'8.8277"N	80°32'55.3116"W	11121.30	149.860	0.66	-0.33	-0.57
18752.00	89.320	148.870	7644.21	11216.12	-9698.91	5633.47	1704421.12	391040.12	39°34'8.0312"N	80°32'54.6693"W	11216.28	149.850	0.46	-0.29	0.36
18847.00	89.630	148.960	7645.08	11311.11	-9780.27	5682.52	1704470.17	390958.77	39°34'7.2329"N	80°32'54.0309"W	11311.26	149.843	0.34	0.33	0.09
18942.00	89.200	148.520	7646.05	11406.10	-9861.47	5731.81	1704519.46	390877.57	39°34'6.4361"N	80°32'53.3894"W	11406.24	149.833	0.65	-0.45	-0.46
19132.00	89.660	148.950	7647.94	11596.07	-10023.87	5830.41	1704618.06	390715.18	39°34'4.8425"N	80°32'52.1062"W	11596.19	149.815	0.33	0.24	0.23
19228.00	90.520	149.560	7647.79	11692.07	-10106.38	5879.49	1704667.13	390632.68	39°34'4.0328"N	80°32'51.4673"W	11692.19	149.811	1.10	0.90	0.64
19323.00	89.380	148.940	7647.88	11787.06	-10188.02	5928.06	1704715.70	390551.04	39°34'3.2316"N	80°32'50.8350"W	11787.18	149.806	1.37	-1.20	-0.65
19418.00	89.450	148.730	7648.85	11882.05	-10269.30	5977.22	1704764.86	390469.76	39°34'2.4339"N	80°32'50.1952"W	11882.16	149.799	0.23	0.07	-0.22
19513.00	89.260	148.780	7649.92	11977.04	-10350.52	6026.50	1704814.13	390388.55	39°34'1.6370"N	80°32'49.5540"W	11977.14	149.790	0.21	-0.20	0.05
19608.00	89.780	148.890	7650.71	12072.03	-10431.81	6075.66	1704863.29	390307.27	39°34'0.8393"N	80°32'48.9142"W	12072.13	149.783	0.56	0.55	0.12
19703.00	90.030	148.860	7650.87	12167.02	-10513.13	6124.76	1704912.39	390225.95	39°34'0.0413"N	80°32'48.2751"W	12167.11	149.776	0.27	0.26	-0.03
19798.00	89.780	149.040	7651.03	12262.01	-10594.52	6173.76	1704961.39	390144.57	39°33'59.2426"N	80°32'47.6373"W	12262.10	149.769	0.32	-0.26	0.19
19893.00	89.970	149.230	7651.23	12357.01	-10676.06	6222.50	1705010.12	390063.03	39°33'58.4424"N	80°32'47.0029"W	12357.10	149.764	0.28	0.20	0.20
19988.00	89.690	149.020	7651.52	12452.01	-10757.60	6271.25	1705058.87	389981.50	39°33'57.6422"N	80°32'46.3684"W	12452.09	149.760	0.37	-0.29	-0.22
20083.00	91.200	149.610	7650.78	12547.00	-10839.29	6319.73	1705107.34	389899.81	39°33'56.8404"N	80°32'45.7373"W	12547.08	149.756	1.71	1.59	0.62
20178.00	89.570	148.580	7650.14	12641.99	-10920.80	6368.52	1705156.13	389818.31	39°33'56.0405"N	80°32'45.1022"W	12642.07	149.751	2.03	-1.72	-1.08



Actual Wellpath Report

BIG 245 108H AWP Proj: 26062'

Page 10 of 14



REFERENCE WELLPATH IDENTIFICATION

Operator	EQT PRODUCTION COMPANY	Well	BIG 245 108H (L-003000)
Field	Wetzel	API	47-103-03443-00-00
Facility	Big 245 Pad	Wellbore	BIG 245 108H AWB
Slot	Slot #108		

WELLPATH DATA (303 stations)

MD [ft]	Inclination [°]	Azimuth [°]	TVD [ft]	Vert Sect [ft]	North [ft]	East [ft]	Grid East [US ft]	Grid North [US ft]	Latitude	Longitude	Closure Dist [ft]	Closure Dir [°]	DLS [°/100ft]	Build Rate [°/100ft]	Turn Rate [°/100ft]
20274.00	89.970	148.900	7650.53	12737.98	-11002.86	6418.33	1705205.94	389736.25	39°33'55.2353"N	80°32'44.4540"W	12738.05	149.744	0.53	0.42	0.33
20369.00	89.850	148.760	7650.67	12832.97	-11084.15	6467.50	1705255.11	389654.97	39°33'54.4376"N	80°32'43.8141"W	12833.04	149.737	0.19	-0.13	-0.15
20464.00	89.660	148.550	7651.08	12927.96	-11165.28	6516.92	1705304.52	389573.84	39°33'53.6415"N	80°32'43.1711"W	12928.02	149.729	0.30	-0.20	-0.22
20559.00	90.370	149.630	7651.06	13022.95	-11246.79	6565.72	1705353.32	389492.34	39°33'52.8416"N	80°32'42.5359"W	13023.02	149.724	1.36	0.75	1.14
20654.00	90.220	148.810	7650.57	13117.95	-11328.40	6614.33	1705401.93	389410.73	39°33'52.0406"N	80°32'41.9031"W	13118.01	149.721	0.88	-0.16	-0.86
20749.00	89.570	149.070	7650.74	13212.95	-11409.78	6663.35	1705450.94	389329.35	39°33'51.2420"N	80°32'41.2652"W	13213.00	149.715	0.74	-0.68	0.27
20844.00	89.720	148.570	7651.33	13307.94	-11491.06	6712.53	1705500.12	389248.08	39°33'50.4445"N	80°32'40.6252"W	13307.99	149.709	0.55	0.16	-0.53
20939.00	90.250	149.220	7651.35	13402.93	-11572.40	6761.61	1705549.20	389166.75	39°33'49.6463"N	80°32'39.9865"W	13402.98	149.703	0.88	0.56	0.68
21034.00	90.060	149.010	7651.10	13497.92	-11653.93	6810.37	1705597.96	389085.23	39°33'48.8462"N	80°32'39.3518"W	13497.97	149.699	0.30	-0.20	-0.22
21129.00	89.850	148.960	7651.17	13592.92	-11735.35	6859.32	1705646.90	389003.81	39°33'48.0472"N	80°32'38.7148"W	13592.96	149.694	0.23	-0.22	-0.05
21224.00	89.480	148.440	7651.73	13687.91	-11816.52	6908.68	1705696.25	388922.65	39°33'47.2506"N	80°32'38.0726"W	13687.95	149.687	0.67	-0.39	-0.55
21319.00	90.370	149.450	7651.85	13782.90	-11897.90	6957.68	1705745.26	388841.27	39°33'46.4520"N	80°32'37.4349"W	13782.94	149.682	1.42	0.94	1.06
21414.00	89.720	148.660	7651.78	13877.90	-11979.38	7006.53	1705794.10	388759.80	39°33'45.6524"N	80°32'36.7991"W	13877.93	149.677	1.08	-0.68	-0.83
21509.00	89.690	148.950	7652.27	13972.89	-12060.64	7055.74	1705843.31	388678.54	39°33'44.8550"N	80°32'36.1588"W	13972.92	149.671	0.31	-0.03	0.31
21604.00	90.000	149.620	7652.52	14067.88	-12142.31	7104.26	1705891.82	388596.87	39°33'44.0534"N	80°32'35.5272"W	14067.91	149.669	0.78	0.33	0.71
21699.00	90.180	148.900	7652.37	14162.88	-12223.96	7152.82	1705940.38	388515.22	39°33'43.2521"N	80°32'34.8952"W	14162.91	149.666	0.78	0.19	-0.76
21794.00	90.460	148.430	7651.84	14257.87	-12305.10	7202.22	1705989.78	388434.09	39°33'42.4558"N	80°32'34.2524"W	14257.89	149.659	0.58	0.29	-0.49
21889.00	89.690	148.640	7651.72	14352.85	-12386.13	7251.81	1706039.36	388353.06	39°33'41.6607"N	80°32'33.6073"W	14352.88	149.652	0.84	-0.81	0.22
21984.00	90.180	149.390	7651.83	14447.85	-12467.58	7300.71	1706088.27	388271.62	39°33'40.8615"N	80°32'32.9708"W	14447.87	149.648	0.94	0.52	0.79
22078.00	90.060	149.250	7651.63	14541.85	-12548.42	7348.68	1706136.23	388190.79	39°33'40.0680"N	80°32'32.3465"W	14541.87	149.646	0.20	-0.13	-0.15
22173.00	89.970	148.690	7651.61	14636.84	-12629.82	7397.65	1706185.20	388109.39	39°33'39.2692"N	80°32'31.7092"W	14636.86	149.641	0.60	-0.09	-0.59
22268.00	89.820	148.650	7651.78	14731.83	-12710.97	7447.04	1706234.59	388028.24	39°33'38.4729"N	80°32'31.0666"W	14731.85	149.635	0.16	-0.16	-0.04
22363.00	90.430	148.960	7651.57	14826.82	-12792.24	7496.25	1706283.79	387946.99	39°33'37.6754"N	80°32'30.4263"W	14826.84	149.630	0.72	0.64	0.33
22458.00	90.280	149.920	7650.98	14921.82	-12874.04	7544.55	1706332.09	387865.19	39°33'36.8726"N	80°32'29.7976"W	14921.83	149.628	1.02	-0.16	1.01
22553.00	89.170	150.180	7651.44	15016.81	-12956.35	7591.98	1706379.51	387782.88	39°33'36.0645"N	80°32'29.1799"W	15016.83	149.631	1.20	-1.17	0.27
22648.00	89.450	150.120	7652.58	15111.80	-13038.74	7639.26	1706426.79	387700.50	39°33'35.2557"N	80°32'28.5641"W	15111.82	149.634	0.30	0.29	-0.06
22743.00	89.660	150.090	7653.32	15206.79	-13121.10	7686.61	1706474.14	387618.15	39°33'34.4472"N	80°32'27.9474"W	15206.81	149.637	0.22	0.22	-0.03
22838.00	90.120	150.240	7653.50	15301.79	-13203.50	7733.87	1706521.40	387535.74	39°33'33.6383"N	80°32'27.3318"W	15301.81	149.641	0.51	0.48	0.16
22933.00	90.150	150.380	7653.28	15396.78	-13286.03	7780.92	1706568.45	387453.22	39°33'32.8281"N	80°32'26.7189"W	15396.80	149.645	0.15	0.03	0.15
23029.00	90.090	150.070	7653.08	15492.77	-13369.36	7828.60	1706616.12	387369.90	39°33'32.0100"N	80°32'26.0979"W	15492.79	149.648	0.33	0.06	-0.32

RECEIVED
 Office of Oil and Gas
 JAN 22 2024
 Environmental Department of



Actual Wellpath Report

BIG 245 108H AWP Proj: 26062'

Page 11 of 14



REFERENCE WELLPATH IDENTIFICATION			
Operator	EQT PRODUCTION COMPANY	Well	BIG 245 108H (L-003000)
Field	Wetzel	API	47-103-03443-00-00
Facility	Big 245 Pad	Wellbore	BIG 245 108H AWB
Slot	Slot #108		

WELLPATH DATA (303 stations)

MD [ft]	Inclination [°]	Azimuth [°]	TVD [ft]	Vert Sect [ft]	North [ft]	East [ft]	Grid East [US ft]	Grid North [US ft]	Latitude	Longitude	Closure Dist [ft]	Closure Dir [°]	DLS [°/100ft]	Build Rate [°/100ft]	Turn Rate [°/100ft]
23124.00	90.120	150.240	7652.90	15587.77	-13451.76	7875.87	1706663.39	387287.50	39°33'31.2011"N	80°32'25.4822"W	15587.79	149.651	0.18	0.03	0.18
23219.00	90.520	150.040	7652.37	15682.76	-13534.15	7923.17	1706710.69	387205.12	39°33'30.3923"N	80°32'24.8662"W	15682.78	149.654	0.47	0.42	-0.21
23314.00	90.650	149.830	7651.40	15777.75	-13616.36	7970.76	1706758.27	387122.91	39°33'29.5853"N	80°32'24.2465"W	15777.78	149.656	0.26	0.14	-0.22
23409.00	89.850	149.970	7650.99	15872.75	-13698.55	8018.40	1706805.91	387040.73	39°33'28.7785"N	80°32'23.6261"W	15872.78	149.658	0.85	-0.84	0.15
23504.00	90.490	150.280	7650.71	15967.74	-13780.92	8065.72	1706853.23	386958.36	39°33'27.9698"N	80°32'23.0098"W	15967.77	149.660	0.75	0.67	0.33
23600.00	89.880	149.980	7650.40	16063.74	-13864.17	8113.53	1706901.04	386875.12	39°33'27.1526"N	80°32'22.3871"W	16063.77	149.663	0.71	-0.64	-0.31
23694.00	90.000	151.480	7650.50	16157.71	-13946.17	8159.49	1706946.99	386793.13	39°33'26.3475"N	80°32'21.7883"W	16157.75	149.669	1.60	0.13	1.60
23790.00	89.820	150.980	7650.65	16253.67	-14030.31	8205.70	1706993.19	386708.98	39°33'25.5212"N	80°32'21.1860"W	16253.71	149.679	0.55	-0.19	-0.52
23885.00	90.000	150.780	7650.80	16348.65	-14113.31	8251.93	1707039.42	386626.00	39°33'24.7063"N	80°32'20.5836"W	16348.69	149.686	0.28	0.19	-0.21
23980.00	89.850	149.150	7650.92	16443.64	-14195.55	8299.48	1707086.97	386543.76	39°33'23.8990"N	80°32'19.9644"W	16443.69	149.687	1.72	-0.16	-1.72
24074.00	89.850	148.700	7651.17	16537.63	-14276.06	8347.99	1707135.48	386463.26	39°33'23.1089"N	80°32'19.3331"W	16537.68	149.683	0.48	0.00	-0.48
24170.00	89.780	148.170	7651.48	16633.61	-14357.85	8398.25	1707185.73	386381.47	39°33'22.3063"N	80°32'18.6795"W	16633.65	149.676	0.56	-0.07	-0.55
24265.00	90.650	148.570	7651.12	16728.59	-14438.74	8448.07	1707235.55	386300.58	39°33'21.5126"N	80°32'18.0316"W	16728.63	149.668	1.01	0.92	0.42
24360.00	90.550	148.560	7650.13	16823.57	-14519.79	8497.61	1707285.09	386219.54	39°33'20.7173"N	80°32'17.3871"W	16823.61	149.662	0.11	-0.11	-0.01
24455.00	90.250	148.230	7649.46	16918.55	-14600.70	8547.39	1707334.87	386138.63	39°33'19.9234"N	80°32'16.7396"W	16918.58	149.655	0.47	-0.32	-0.35
24550.00	89.820	147.900	7649.40	17013.52	-14681.32	8597.64	1707385.12	386058.02	39°33'19.1324"N	80°32'16.0863"W	17013.54	149.646	0.57	-0.45	-0.35
24645.00	90.150	148.750	7649.43	17108.50	-14762.17	8647.53	1707435.00	385977.17	39°33'18.3391"N	80°32'15.4375"W	17108.52	149.639	0.96	0.35	0.89
24740.00	90.180	148.360	7649.16	17203.48	-14843.22	8697.09	1707484.56	385896.13	39°33'17.5438"N	80°32'14.7929"W	17203.50	149.633	0.41	0.03	-0.41
24835.00	90.030	148.120	7648.98	17298.46	-14923.99	8747.09	1707534.56	385815.36	39°33'16.7512"N	80°32'14.1426"W	17298.47	149.625	0.30	-0.16	-0.25
24930.00	90.220	148.800	7648.77	17393.44	-15004.96	8796.79	1707584.25	385734.40	39°33'15.9567"N	80°32'13.4963"W	17393.45	149.619	0.74	0.20	0.72
25025.00	90.090	148.470	7648.52	17488.43	-15086.07	8846.23	1707633.69	385653.29	39°33'15.1607"N	80°32'12.8531"W	17488.44	149.613	0.37	-0.14	-0.35
25120.00	90.060	148.650	7648.39	17583.41	-15167.13	8895.78	1707683.24	385572.24	39°33'14.3654"N	80°32'12.2086"W	17583.42	149.608	0.19	-0.03	0.19
25215.00	89.910	147.550	7648.42	17678.38	-15247.78	8945.99	1707733.44	385491.59	39°33'13.5740"N	80°32'11.5559"W	17678.39	149.600	1.17	-0.16	-1.16
25310.00	90.370	149.070	7648.19	17773.35	-15328.61	8995.89	1707783.34	385410.77	39°33'12.7809"N	80°32'10.9069"W	17773.36	149.593	1.67	0.48	1.60
25405.00	90.280	148.480	7647.65	17868.34	-15409.85	9045.14	1707832.58	385329.54	39°33'11.9837"N	80°32'10.2663"W	17868.35	149.588	0.63	-0.09	-0.62
25500.00	90.920	148.370	7646.65	17963.32	-15490.78	9094.88	1707882.32	385248.61	39°33'11.1895"N	80°32'9.6194"W	17963.32	149.582	0.68	0.67	-0.12
25595.00	90.400	148.370	7645.56	18058.29	-15571.66	9144.69	1707932.14	385167.73	39°33'10.3959"N	80°32'8.9716"W	18058.29	149.576	0.55	-0.55	0.00
25690.00	90.740	148.270	7644.61	18153.27	-15652.50	9194.58	1707982.02	385086.90	39°33'9.6027"N	80°32'8.3228"W	18153.27	149.569	0.37	0.36	-0.11
25785.00	90.340	147.900	7643.72	18248.23	-15733.14	9244.80	1708032.24	385006.27	39°33'8.8115"N	80°32'7.6698"W	18248.23	149.561	0.57	-0.42	-0.39
25880.00	90.740	148.230	7642.82	18343.19	-15813.75	9295.05	1708082.48	384925.65	39°33'8.0205"N	80°32'7.0165"W	18343.19	149.554	0.55	0.42	0.35

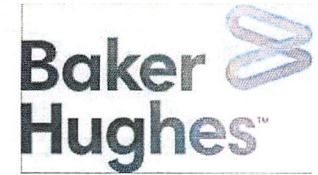
RECEIVED
 and Gas
 2024



Actual Wellpath Report

BIG 245 108H AWP Proj: 26062'

Page 12 of 14



REFERENCE WELLPATH IDENTIFICATION

Operator	EQT PRODUCTION COMPANY	Well	BIG 245 108H (L-003000)
Field	Wetzel	API	47-103-03443-00-00
Facility	Big 245 Pad	Wellbore	BIG 245 108H AWB
Slot	Slot #108		

WELLPATH DATA (303 stations) † = interpolated, ‡ = extrapolated station

MD [ft]	Inclination [°]	Azimuth [°]	TVD [ft]	Vert Sect [ft]	North [ft]	East [ft]	Grid East [US ft]	Grid North [US ft]	Latitude	Longitude	Closure Dist [ft]	Closure Dir [°]	DLS [°/100ft]	Build Rate [°/100ft]	Turn Rate [°/100ft]
25975.00	90.090	148.270	7642.13	18438.17	-15894.53	9345.04	1708132.47	384844.88	39°33'7.2279"N	80°32'6.3665"W	18438.17	149.547	0.69	-0.68	0.04
26037.00	89.600	148.180	7642.30	18500.15	-15947.24	9377.69	1708165.12	384792.17	39°33'6.7107"N	80°32'5.9420"W	18500.15	149.543	0.80	-0.79	-0.15
26062.00‡	89.600	148.180	7642.48	18525.14	-15968.48	9390.87	1708178.30	384770.93	39°33'6.5023"N	80°32'5.7706"W	18525.14	149.541	0.00	0.00	0.00

HOLE & CASING SECTIONS - Ref Wellbore: BIG 245 108H AWB Ref Wellpath: BIG 245 108H AWP Proj: 26062'

String/Diameter	Start MD [ft]	End MD [ft]	Interval [ft]	Start TVD [ft]	End TVD [ft]	Start N/S [ft]	Start E/W [ft]	End N/S [ft]	End E/W [ft]
17.5in Open Hole	28.00	1242.00	1214.00	28.00	1241.98	0.00	0.00	2.60	-4.56
13.375in Casing Surface	28.00	1212.00	1184.00	28.00	1211.98	0.00	0.00	2.62	-4.54
12.25in Open Hole	1242.00	2718.00	1476.00	1241.98	2717.97	2.60	-4.56	5.59	-6.82
9.625in Casing Intermediate	28.00	2688.00	2660.00	28.00	2687.97	0.00	0.00	5.56	-6.75
8.75in Open Hole	2718.00	6900.00	4182.00	2717.97	6888.96	5.59	-6.82	132.70	-267.80
8.5in Open Hole	6900.00	26062.00	19162.00	6888.96	7642.48	132.70	-267.80	-15968.48	9390.87
5.5in Casing Production	28.00	26032.00	26004.00	28.00	7642.27	0.00	0.00	-15942.99	9375.05

RECEIVED
 Office of Oil and Gas
 WV Department of
 Environmental Protection
 JAN 22 2024



Actual Wellpath Report

BIG 245 108H AWP Proj: 26062'

Page 13 of 14



REFERENCE WELLPATH IDENTIFICATION			
Operator	EQT PRODUCTION COMPANY	Well	BIG 245 108H (L-003000)
Field	Wetzel	API	47-103-03443-00-00
Facility	Big 245 Pad	Wellbore	BIG 245 108H AWB
Slot	Slot #108		

TARGETS								
Name	TVD [ft]	North [ft]	East [ft]	Grid East [US ft]	Grid North [US ft]	Latitude	Longitude	Shape
BIG 245 108H LP Rev-1	7544.00	-428.91	50.46	1698838.46	400309.56	39°35'38.9922"N	80°34'7.3638"W	point
BIG 245 108H BHL Rev-1	7702.20	-15971.02	9389.50	1708176.93	384768.40	39°33'6.4771"N	80°32'5.7877"W	point
BIG 245 Hardline 4	9000.00	-16679.12	8018.01	1706805.52	384060.34	39°32'59.3227"N	80°32'23.1907"W	polygon
	2D Polygon: dimensions not calculated							
BIG 245 L&A 1 Rev-0	9000.00	-4195.87	-702.77	1698085.27	396542.82	39°35'1.6765"N	80°34'16.4112"W	polygon
	2D Polygon: dimensions not calculated							
BIG 245 L&A 2 Rev-0	9000.00	-4419.63	3568.09	1702355.87	396319.08	39°34'59.9649"N	80°33'21.8335"W	polygon
	2D Polygon: dimensions not calculated							

WELLPATH COMPOSITION - Ref Wellbore: BIG 245 108H AWB Ref Wellpath: BIG 245 108H AWP Proj: 26062'					
Start MD [ft]	End MD [ft]	Positional Uncertainty Model	Log Name/Comment	Wellbore	Survey Date
28.00	1165.00	Gyrodata 2015 - CT+WIR+ALC	01 <17.5">Gyrodata [CT+WIR+ALC] (115'-1165')	BIG 245 108H AWB	6/1/2022
1165.00	2625.00	Gyrodata 2015 - CT+WIR+ALC	02 <12.25">Gyrodata [CT+WIR+ALC] (1165')(1215'- 2625')	BIG 245 108H AWB	6/1/2022
2625.00	6821.00	OWSG MWD rev2 - Standard	03 <8.75"> OWSG MWD REV.2 [STANDARD] (2625')(2738'-6821')	BIG 245 108H AWB	6/1/2022
6821.00	26062.00	OWSG MWD rev2 + IFR1 + Multi-Station Correction	04 <8.5">OWSG MWD REV.2 [IFR1+MSA] (6821')(6877'-26037')	BIG 245 108H AWB	6/1/2022



Actual Wellpath Report

BIG 245 108H AWP Proj: 26062'

Page 14 of 14



REFERENCE WELLPATH IDENTIFICATION

Operator	EQT PRODUCTION COMPANY	Well	BIG 245 108H (L-003000)
Field	Wetzel	API	47-103-03443-00-00
Facility	Big 245 Pad	Wellbore	BIG 245 108H AWB
Slot	Slot #108		

COMMENTS

Wellpath general comments

API: 47103034430000

BH Job #: 111434803

Rig: Patterson 292

Duration: 7/22/2022 - 7/28/2022

01_<17.5">Gyrodata [CT+WIR+ALC] (115'-1165')

02_<12.25">Gyrodata [CT+WIR+ALC] (1165')(1215'- 2625')

03_<8.75"> OWSG MWD REV.2 [STANDARD] (2625')(2738'-6821')

04_<8.5">OWSG MWD REV.2 [IFR1+MSA] (6821')(6877'-26037')

KOP = 2769' MD / 2768.97' TVD

Tie on to SDI MWD = 6821' MD / 6810.29' TVD

Marcellus

Landing Point = 8114' MD / 7548.26' TVD

Deepest Point of Well = 22838' MD / 7653.50' TVD

Final Survey = 26037 MD / 7642.30' TVD

Projection to TD = 26062' MD / 7642.48' TVD

RECEIVED
Office of Oil and Gas
JAN 22 2024
WV Department of
Environmental Protection