

10,027' to Top Hole

1,032' to Bottom Hole

LATITUDE 39 - 35 - 00

TDP HOLE LONGITUDE 80 - 42 - 30

BTM HOLE LONGITUDE 80 - 45 - 00

3,873' to Bottom Hole

Antero Resources Well No. Trader 1H

Antero Resources Corporation



ID	TM/Par	Owner	Bk/Pg	Acres
1	16-26	Antero Resources Corporation	474/713	47.50
2	16-25	Antero Resources Corporation	474/713	39.00
3	17-22	Perry D. Bucher	411/759	37.65
4	17-58	Pennie Baker	411/735	42.41
5	16-15	Donald L. Smith II, et ux	451/925	36.45
6	16-16	Donald L. Smith II, et ux	451/925	80.75
7	16-12	Donald L. Smith II, et ux	451/925	2.30
8	16-4	Donald L. Smith II, et ux	451/925	38.00
9	16-13	Donald L. Smith II, et ux	451/925	35.00
10	13-67	Gerold F. & Debra D. Richard	399/544	63.27
11	13-67.3	Dana Stuart Straight	369/19	1.42
12	13-67.2	Floyd M. Amos Est.	W68/309	5.00
13	13-41.1	Albert D. & Michelle D. Hornback	357/701	2.92
14	13-87.5	Julie A. & Aaron E. Hinderman	398/322	16.44
15	13-41	Shari D. Burgess	432/665	95.08
16	13-27	Donald P. Vandyke & Mark L. Vandyke	410/241	123.80
17	12-58	Donald P. Vandyke & Mark L. Vandyke	425/472	46.00
18	12-33	Kevin E. & Carol L. Cunningham	397/533	84.68
19	13-18	Coastal Forest Resources Co.	444/105	119.00

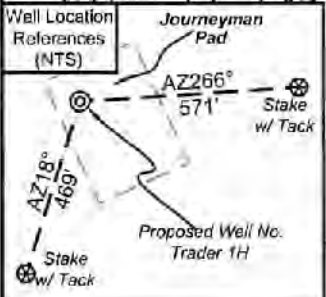
Notes
West Virginia Coordinate System of 1927, North Zone based upon Differential GPS Measurements. Well No. Trader Unit 1H Top Hole coordinates are N: 384,204.36' Latitude: 39°32'53.52" E: 1,649,244.02' Longitude: 80°44'38.01" Bottom Hole coordinates are N: 393,166.52' Latitude: 39°34'21.73" E: 1,648,613.19' Longitude: 80°45'13.19" UTM Zone 17, NAD 1983
Top Hole Coordinates Bottom Hole Coordinates
N: 4,377,653.889m N: 4,380,370.883m
E: 522,019.891m E: 521,172.910m
Plat orientation and corner and well references are based upon the grid north meridian. Well location references are based upon the magnetic meridian.

Notes:
Well No. Trader Unit 1H UTM Zone 17, NAD 1927
Top Hole Coordinates
N: 14,361,837.40'
E: 1,712,612.19'
Point of Entry Coordinates
N: 14,363,159.86'
E: 1,712,356.99'
Bottom Hole Coordinates
N: 14,370,551.41'
E: 1,709,833.06'

	Bearing	Dist.
L1	S 83°58' E	1,549.5'
L2	S 11°31' W	756.7'
L3	S 25°49' W	1,642.4'
L4	S 70°09' W	980.3'
L5	N 08°34' W	1,544.2'

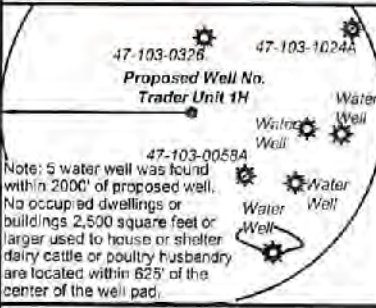
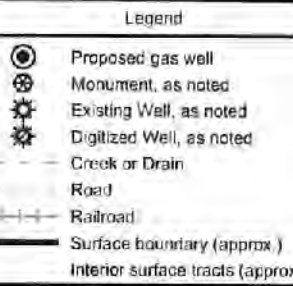
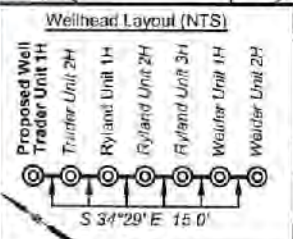
Leases

A	Pamela Ann Palmer Emch
B	William R. Stalnaker
C	BRC Appalachian Minerals I, LLC
D	Dianne K. Howell
E	David E. Bowyer
F	Acropolis, Inc.
G	Melinda Debnar
H	Acropolis, Inc.
I	Acropolis, Inc.
J	Acropolis, Inc.
K	P & P Fujimo, LLC
L	Black Rock Enterprises
M	Shiben Estates, Inc.
N	WVDNR
O	Chesapeake Appalachia, LLC
P	BRC Appalachian Minerals I, LLC
Q	Bounty Minerals, LLC



I, the undersigned, hereby certify that this plat is correct to the best of my knowledge and belief and shows all the information required by law and the rules issued and prescribed by the Department of Environmental Protection.

Bradley D. Miller
Bradley D. Miller, P.S. 2167



FILE NO: 133-34-G-16
DRAWING NO: Trader 1H Well Plat
SCALE: 1" = 2000'
MINIMUM DEGREE OF ACCURACY: Submeter
PROVEN SOURCE OF ELEVATION: CORS, Monroe County, OH

STATE OF WEST VIRGINIA
DEPARTMENT OF ENVIRONMENTAL PROTECTION
OIL AND GAS DIVISION

DATE: August 30 2021
OPERATOR'S WELL NO. Trader Unit 1H
API WELL NO
47 - 103 - 05459
STATE COUNTY PERMIT

WELL TYPE: OIL GAS LIQUID INJECTION WASTE DISPOSAL
(IF GAS) PRODUCTION: STORAGE DEEP SHALLOW
LOCATION: ELEVATION: Existing 1,175' Proposed 1,154' WATERSHED: Fishing Creek QUADRANGLE: TOP Hole: Pine Groves BTM Hole: Porter Falls
DISTRICT: Green Antero Resources COUNTY: Wayne
SURFACE OWNER: Corporation Bounty Minerals, LLC; WVDNR; ACREAGE: 47.5 47.5; 38.78333; 33; 45.5; 22; 100.925;
ROYALTY OWNER: Pamela Ann Palmer Emch; Dianne K. Howell; Melinda Debnar; Acropolis, Inc. (2) LEASE NO: ACREAGE: 13; 123.8; 113.53;
PROPOSED WORK: DRILL CONVERT DRILL DEEPER FRACTURE OR STIMULATE PLUG OFF OLD FORMATION
 PERFORATE NEW FORMATION OTHER PHYSICAL CHANGE IN WELL (SPECIFY)
 PLUG AND ABANDON CLEAN OUT AND REPLUG TARGET FORMATION: Marcellus Shale ESTIMATED DEPTH: 7,400' TVD 17,200' MD

WELL OPERATOR: Antero Resources Corporation DESIGNATED AGENT: Dianna Stamper - CT Corporation System
ADDRESS: 1615 Wynkoop Street ADDRESS: 5400 D Big Tyler Road
Denver, CO 80202 Charleston, WV 25313

12,797' to Top Hole

10,027' to Top Hole

1,032' to Bottom Hole

LATITUDE 39 - 35 - 00

LONGITUDE 80 - 42 - 30

LONGITUDE 80 - 45 - 00

LONGITUDE 80 - 45 - 00

LONGITUDE 80 - 45 - 00

LONGITUDE 80 - 45 - 00

LONGITUDE 80 - 45 - 00

LONGITUDE 80 - 45 - 00

LONGITUDE 80 - 45 - 00

LONGITUDE 80 - 45 - 00

LONGITUDE 80 - 45 - 00

LONGITUDE 80 - 45 - 00

LONGITUDE 80 - 45 - 00

LONGITUDE 80 - 45 - 00

LONGITUDE 80 - 45 - 00

LONGITUDE 80 - 45 - 00

LONGITUDE 80 - 45 - 00

LONGITUDE 80 - 45 - 00

LONGITUDE 80 - 45 - 00

LONGITUDE 80 - 45 - 00

LONGITUDE 80 - 45 - 00

LONGITUDE 80 - 45 - 00

LONGITUDE 80 - 45 - 00

LONGITUDE 80 - 45 - 00

LONGITUDE 80 - 45 - 00

LONGITUDE 80 - 45 - 00

LONGITUDE 80 - 45 - 00

LONGITUDE 80 - 45 - 00

LONGITUDE 80 - 45 - 00

LONGITUDE 80 - 45 - 00

LONGITUDE 80 - 45 - 00

LONGITUDE 80 - 45 - 00

LONGITUDE 80 - 45 - 00

LONGITUDE 80 - 45 - 00

LONGITUDE 80 - 45 - 00

LONGITUDE 80 - 45 - 00

LONGITUDE 80 - 45 - 00

LONGITUDE 80 - 45 - 00

LONGITUDE 80 - 45 - 00

LONGITUDE 80 - 45 - 00

LONGITUDE 80 - 45 - 00

LONGITUDE 80 - 45 - 00

LONGITUDE 80 - 45 - 00

LONGITUDE 80 - 45 - 00

LONGITUDE 80 - 45 - 00

LONGITUDE 80 - 45 - 00

LONGITUDE 80 - 45 - 00

LONGITUDE 80 - 45 - 00

LONGITUDE 80 - 45 - 00

LONGITUDE 80 - 45 - 00

LONGITUDE 80 - 45 - 00

LONGITUDE 80 - 45 - 00

LONGITUDE 80 - 45 - 00

LONGITUDE 80 - 45 - 00

LONGITUDE 80 - 45 - 00

LONGITUDE 80 - 45 - 00

LONGITUDE 80 - 45 - 00

LONGITUDE 80 - 45 - 00

LONGITUDE 80 - 45 - 00

LONGITUDE 80 - 45 - 00

LONGITUDE 80 - 45 - 00

LONGITUDE 80 - 45 - 00

LONGITUDE 80 - 45 - 00

LONGITUDE 80 - 45 - 00

LONGITUDE 80 - 45 - 00

LONGITUDE 80 - 45 - 00

LONGITUDE 80 - 45 - 00

LONGITUDE 80 - 45 - 00

LONGITUDE 80 - 45 - 00

LONGITUDE 80 - 45 - 00

LONGITUDE 80 - 45 - 00

LONGITUDE 80 - 45 - 00

LONGITUDE 80 - 45 - 00

LONGITUDE 80 - 45 - 00

LONGITUDE 80 - 45 - 00

LONGITUDE 80 - 45 - 00

LONGITUDE 80 - 45 - 00

LONGITUDE 80 - 45 - 00

LONGITUDE 80 - 45 - 00

LONGITUDE 80 - 45 - 00

LONGITUDE 80 - 45 - 00

LONGITUDE 80 - 45 - 00

LONGITUDE 80 - 45 - 00

LONGITUDE 80 - 45 - 00

LONGITUDE 80 - 45 - 00

LONGITUDE 80 - 45 - 00

LONGITUDE 80 - 45 - 00

Antero Resources Well No. Trader 1H

Antero Resources Corporation



ID	TM/Par	Owner	Bk/Pg	Acres
1	16-26	Antero Resources Corporation	474/713	47.50
2	16-25	Antero Resources Corporation	474/713	39.00
3	17-22	Perry D. Bucher	411/759	37.65
4	17-58	Pennie Baker	411/735	42.41
5	18-15	Donald L. Smith II, et ux	451/925	36.45
6	18-16	Donald L. Smith II, et ux	451/925	60.75
7	16-12	Donald L. Smith II, et ux	451/925	2.30
8	16-4	Donald L. Smith II, et ux	451/925	38.00
9	16-13	Donald L. Smith II, et ux	451/925	35.00
10	13-67	Gerold F. & Debra D. Richard	398/544	63.27
11	13-67.3	Dana Stuart Straight	368/19	1.42
12	13-67.2	Floyd M. Amos Est.	W66/309	5.00
13	13-41.1	Albert D. & Michelle D. Hornbeck	357/701	2.92
14	13-67.5	Julie A. & Aaron E. Hinderman	398/322	16.44
15	13-41	Shar D. Burgess	432/665	95.08
16	13-27	Donald P. Vandyke & Mark L. Vandyke	410/241	123.80
17	12-58	Donald P. Vandyke & Mark L. Vandyke	425/472	46.00
18	12-33	Kevin E. & Carol L. Cunningham	397/533	84.66
19	13-18	Coastal Forest Resources Co.	444/105	119.00

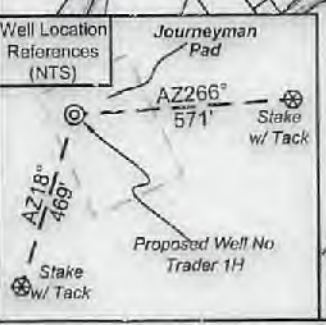
Notes
 West Virginia Coordinate System of 1927, North Zone based upon Differential GPS Measurements.
 Well No. Trader Unit 1H Top Hole coordinates are:
 N: 384,204.36' Latitude: 39°32'53.52"
 E: 1,649,244.02' Longitude: 80°44'38.01"
 Bottom Hole coordinates are:
 N: 393,166.52' Latitude: 39°34'21.73"
 E: 1,645,613.19' Longitude: 80°45'13.19"
 UTM Zone 17, NAD 1983
 Top Hole Coordinates: N: 4,377,653.869m E: 522,019.891m
 Bottom Hole Coordinates: N: 4,380,370.883m E: 521,172.910m
 Plat orientation and corner and well references are based upon the grid north meridian.
 Well location references are based upon the magnetic meridian.

Notes:
 Well No. Trader Unit 1H UTM Zone 17, NAD 1927
 Top Hole Coordinates: N: 14,361,637.40' E: 1,712,612.19'
 Point of Entry Coordinates: N: 14,363,159.86' E: 1,712,356.99'
 Bottom Hole Coordinates: N: 14,370,551.41' E: 1,709,833.06'

	Bearing	Dist.
L1	S 83°58' E	1,549.5'
L2	S 11°31' W	756.7'
L3	S 25°49' W	1,642.4'
L4	S 70°09' W	980.3'
L5	N 08°34' W	1,544.2'

Leases

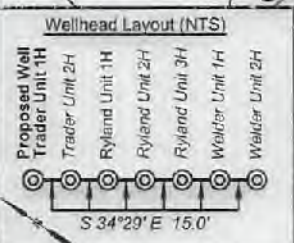
A	Pamela Ann Palmer Emch
B	William R. Stalaker
C	BRC Appalachian Minerals I, LLC
D	Dianne K. Howell
E	David E. Bowyer
F	Acropolis, Inc.
G	Melinda Debner
H	Acropolis, Inc.
I	Acropolis, Inc.
J	Acropolis, Inc.
K	P & P Fujino, LLC
L	Black Rock Enterprises
M	Shiben Estates, Inc.
N	WVDNR
O	Chesapeake Appalachia, LLC
P	BRC Appalachian Minerals I, LLC
Q	Bounty Minerals, LLC



I, the undersigned, hereby certify that this plat is correct to the best of my knowledge and belief and shows all the information required by law and the rules issued and prescribed by the Department of Environmental Protection.

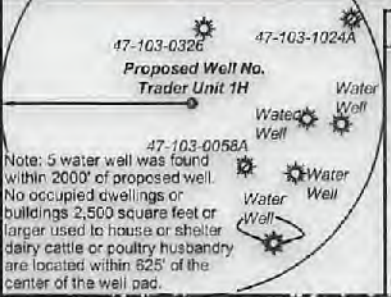
Bradley D. Miller

Bradley D. Miller, P.S. 2167



Legend

- Proposed gas well
- Monument, as noted
- Existing Well, as noted
- Digitized Well, as noted
- Creek or Drain
- Road
- Railroad
- Surface boundary (approx.)
- Interior surface tracts (approx.)



FILE NO: 133-34-G-18
 DRAWING NO: Trader 1H Well Plat
 SCALE: 1" = 2000'
 MINIMUM DEGREE OF ACCURACY: Submeter
 PROVEN SOURCE OF ELEVATION: CORS, Monroe County, OH

STATE OF WEST VIRGINIA
 DEPARTMENT OF ENVIRONMENTAL PROTECTION
OIL AND GAS DIVISION

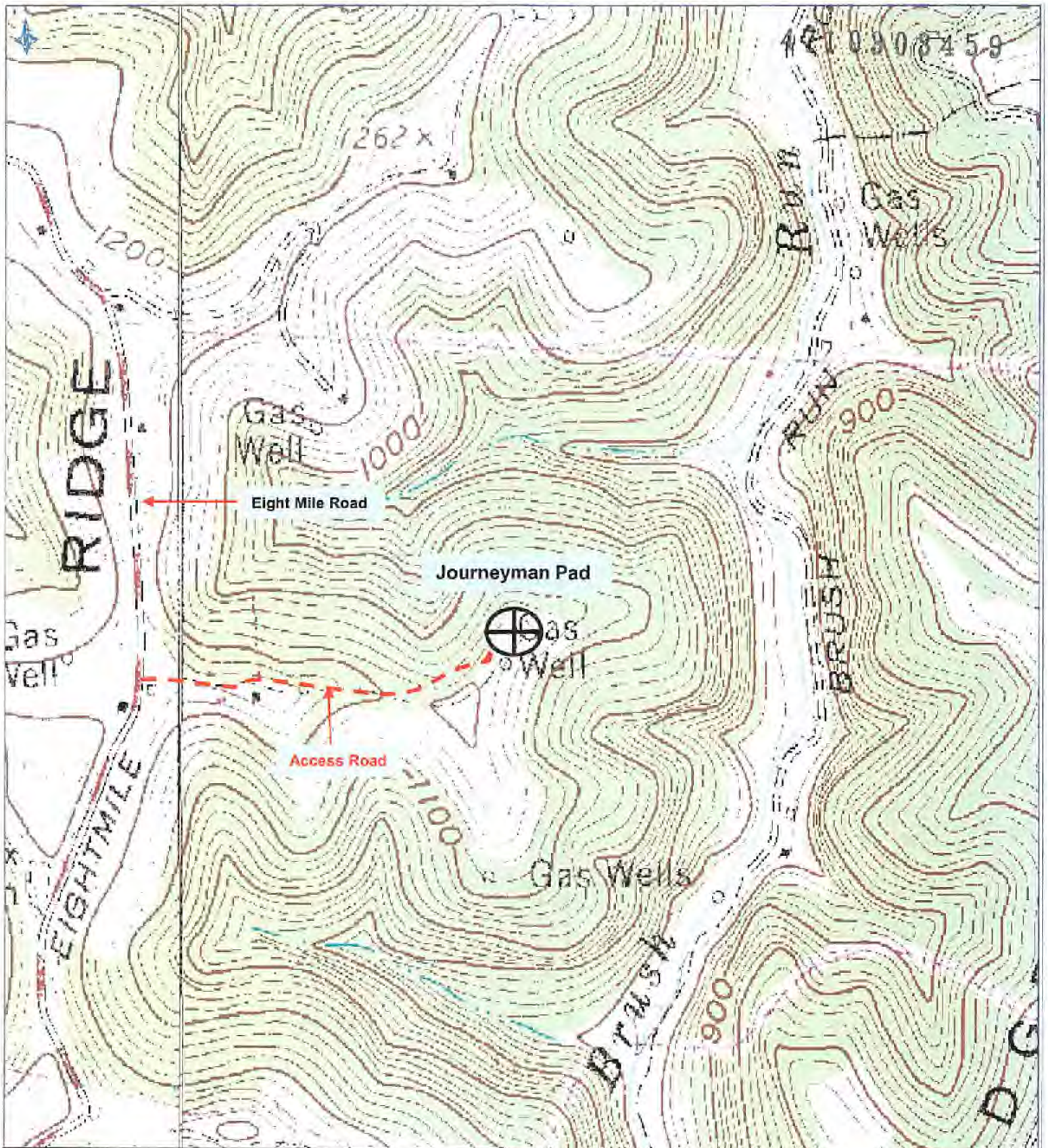
DATE: August 30 2021
 OPERATOR'S WELL NO. Trader Unit 1H
 API WELL NO
 47 - 103 - 03459
 STATE COUNTY PERMIT

WELL TYPE: OIL GAS LIQUID INJECTION WASTE DISPOSAL
 (IF GAS) PRODUCTION: STORAGE DEEP SHALLOW
 LOCATION: ELEVATION: Existing 1,175' Proposed 1,154' WATERSHED: Fishing Creek QUADRANGLE: Pine Grove
 DISTRICT: Green Antero Resources COUNTY: Wayne
 SURFACE OWNER: Corporation Bounty Minerals, LLC; WVDNR; ACREAGE: 47.5
 ROYALTY OWNER: Pamela Ann Palmer Emch; Dianne K. Howell; Melinda Debner; Acropolis, Inc. (2) LEASE NO: ACREAGE: 13; 123.8; 113.53;
 PROPOSED WORK: DRILL CONVERT DRILL DEEPER FRACTURE OR STIMULATE PLUG OFF OLD FORMATION
 PERFORATE NEW FORMATION OTHER PHYSICAL CHANGE IN WELL (SPECIFY) _____
 PLUG AND ABANDON CLEAN OUT AND REPLUG TARGET FORMATION: Marcellus Shale ESTIMATED DEPTH: 7,400' TVD 17,200' MD

WELL OPERATOR: Antero Resources Corporation DESIGNATED AGENT: Dianna Stamper - CT Corporation System
 ADDRESS: 1615 Wynkoop Street ADDRESS: 5400 D Big Tyler Road
 Denver, CO 80202 Charleston, WV 25313

10/29/2021

12,797' to Top Hole



Antero Resources Corporation
Appalachian Basin
Journeyman Pad
Wetzel County

Quadrangle: Pine Grove
Watershed: Fishing Creek
District: Green
Date: 10-10-2019

10/29/2021

500 FEET