



# ANTERO RESOURCES CORPORATION



Location: Wetzel County, WV  
 Field: Wetzel  
 Facility: Red Lady Pad

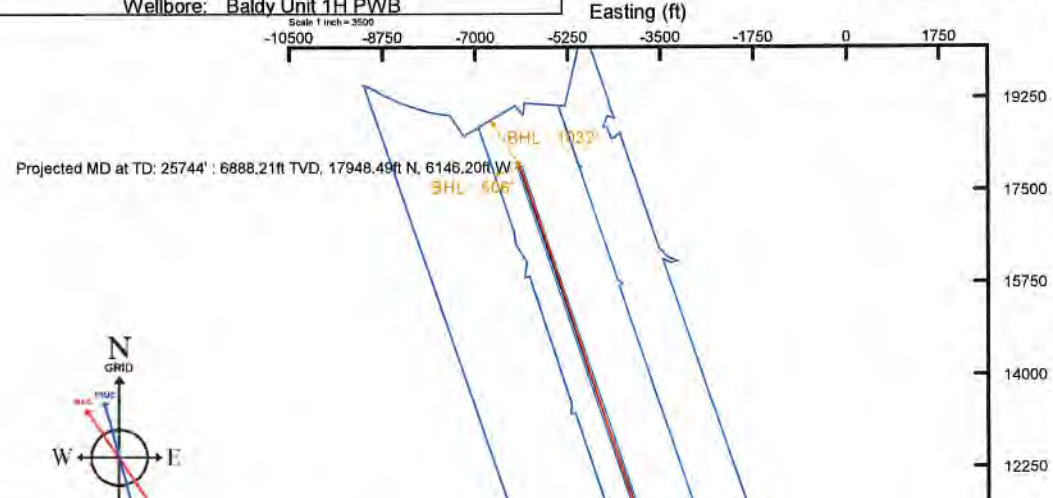
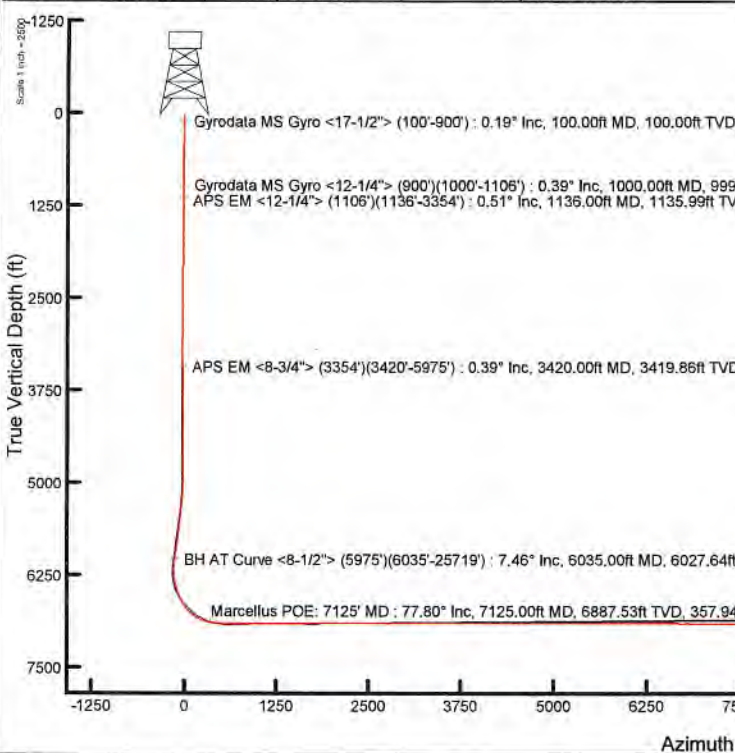
Slot: Slot C  
 Well: Baldy Unit 1H  
 Wellbore: Baldy Unit 1H PWB

Plot reference wellpath is Baldy Unit 1H PWB Rev-B.0	Grid System: NAD27 / UTM Zone 17 North, US feet
True vertical depths are referenced to H&P 317 (RKB)	North Reference: Grid north
Reference wellpath measured depths are referenced to H&P 317 (RKB)	Scale: True distance
H&P 317 (RKB) to Mean Sea Level: 1232.5 feet	Coordinates are in feet referenced to Slot
Mean Sea Level to Ground level (At Slot: Slot C): -1207 feet	Depths are in feet
Offset wellpath MDs are referenced to each path's default MD datum	Created by: sbrayner on 2022-07-21; Database: WA_MPL_EASTERNUS_Data

Location Information					
Facility Name	Grid East (US ft)	Grid North (US ft)	Latitude	Longitude	
Red Lady Pad	1707525.450	14353573.910	39°31'33.9280"N	80°45'43.2459"W	
Slot	Local N (ft)	Local E (ft)	Grid East (US ft)	Grid North (US ft)	Latitude
Slot C	-29.94	1.88	1707527.330	14353543.980	39°31'33.6320"N
Comment: Baldy Unit 1H					
H&P 317 (RKB) to Ground level (At Slot: Slot C)					25.5ft
Mean Sea Level to Ground level (At Slot: Slot C)					-1207ft
H&P 317 (RKB) to Mean Sea Level					1232.5ft

Well Profile Data								
Design Comment	MD (ft)	Inc (°)	Az (°)	TVD (ft)	Local N (ft)	Local E (ft)	DLS (°/100ft)	VS (ft)
Tie On	3354.00	0.150	88.940	3353.86	-20.25	-4.18	1.30	-17.83
Proj. to Bottom	3432.00	0.150	88.940	3431.86	-20.24	-3.98	0.00	-17.89
KOP 1	5000.15	0.150	88.940	5000.00	-20.17	0.13	0.00	-19.14
End of 3D Arc	5399.70	7.998	175.687	5398.26	-47.92	2.75	2.00	-46.26
Curve KOP	6110.95	7.998	175.687	6102.59	-146.61	10.19	0.00	-142.09
POE	7142.97	74.809	341.232	6890.00	340.69	-178.46	8.00	379.99
Landing Pt.	7339.12	80.600	341.232	6915.00	524.30	-240.86	8.00	573.92
BHL	25740.46	90.500	341.232	8754.42	17946.57	-6161.02	0.00	18974.58

Well Data			
Slot	Well	Wellbore	Wellpath
Slot C	Baldy Unit 1H	Baldy Unit 1H AWP	Baldy Unit 1H AWP Proj: 25744'
Slot C	Baldy Unit 1H	Baldy Unit 1H PWB	Baldy Unit 1H PWB Rev-B.0



User specified (HDGM) Dip: 66.43° Field: 51787 nT  
 Magnetic North is 7.66 degrees West of True North (at 6/29/2022)  
 Grid North is 0.15 degrees East of True North  
 To correct azimuth from True to Grid subtract 0.15 degrees  
 To correct azimuth from Magnetic to Grid subtract 7.81 degrees

API: 47-103-03478-0000  
 BH Job #: 111354385  
 Rig: H&P 317  
 Duration: 7/3/2022-7/9/2022

RECEIVED  
 Office of Oil and Gas  
 FEB 9 4 2023  
 WV Department of Environmental Protection

Marcellus POE: 7125' MD: 6887.53ft TVD, 329.44ft N, 143.01ft W  
 BH AT Curve <8-1/2> (5975°-6035°-25719°) : 6027.64ft TVD, 122.43ft S, 23.42ft E  
 APS EM <8-3/4> (3354°-3420°-5975°) : 3419.86ft TVD, 20.10ft S, 4.27ft W  
 APS EM <12-1/4> (1106°-1136°-3354°) : 1135.99ft TVD, 3.20ft S, 1.83ft W  
 Gyrodatta MS Gyro <12-1/4> (900°-1000°-1106°) : 999.99ft TVD, 2.50ft S, 0.84ft W  
 Gyrodatta MS Gyro <17-1/2> (100°-900°) : 100.00ft TVD, 0.07ft S, 0.10ft W

Projected MD at TD: 25744' : 90.28° Inc, 25744.00ft MD, 6888.21ft TVD, 18971.61ft VS

Vertical Section (ft)  
 Azimuth 341.23° with reference 0.00 N, 0.00 E



# Actual Wellpath Report

Baldy Unit 1H AWP Proj: 25744'  
Page 1 of 14



REFERENCE WELLPATH IDENTIFICATION			
Operator	ANTERO RESOURCES CORPORATION	Well	Baldy Unit 1H
Field	Wetzel	API	47-103-03478-0000
Facility	Red Lady Pad	Wellbore	Baldy Unit 1H AWB
Slot	Slot C		

REPORT SETUP INFORMATION			
Projection System	NAD27 / UTM Zone 17 North, US feet	Software System	WellArchitect® 6.0
North Reference	Grid	User	Edsaryar
Scale	0.999605	Report Generated	7/21/2022 at 4:39:10 PM
Convergence at slot	0.15° East	Database	WA_MPL_EASTERNUS_Defn

WELLPATH LOCATION						
	Local coordinates		Grid coordinates		Geographic coordinates	
	North[ft]	East[ft]	Easting[US ft]	Northing[US ft]	Latitude	Longitude
Slot Location	-29.94	1.88	1707527.33	14353543.98	39°31'33.6320"N	80°45'43.2229"W
Facility Reference Pt			1707525.45	14353573.91	39°31'33.9280"N	80°45'43.2459"W
Field Reference Pt			0.00	0.00	0°00'0.0000"	85°29'19.3013"W

WELLPATH DATUM			
Calculation method	Minimum curvature	H&P 317 (RKB) to Facility Vertical Datum	1232.50ft
Horizontal Reference Pt	Slot	H&P 317 (RKB) to Mean Sea Level	1232.50ft
Vertical Reference Pt	H&P 317 (RKB)	H&P 317 (RKB) to Ground Level at Slot (Slot C)	25.50ft
MD Reference Pt	H&P 317 (RKB)	Section Origin	N 0.00, E 0.00 ft
Field Vertical Reference	Mean Sea Level	Section Azimuth	341.23°

RECEIVED  
 Office of Oil and Gas  
 FEB 24 2023  
 WV Department of  
 Environmental Protection



# Actual Wellpath Report

Baldy Unit 1H AWP Proj: 25744'

Page 2 of 14



## REFERENCE WELLPATH IDENTIFICATION

Operator	ANTERO RESOURCES CORPORATION	Well	Baldy Unit 1H
Field	Wetzel	API	47-103-03478-0000
Facility	Red Lady Pad	Wellbore	Baldy Unit 1H AWB
Slot	Slot C		

## WELLPATH DATA (286 stations) † = interpolated, ‡ = extrapolated station

MD [ft]	Inclination [°]	Azimuth [°]	TVD [ft]	Vert Sect [ft]	North [ft]	East [ft]	Grid East [US ft]	Grid North [US ft]	Latitude	Longitude	Closure Dist [ft]	Closure Dir [°]	DLS [°/100ft]	Build Rate [°/100ft]	Turn Rate [°/100ft]	Comments
0.00	0.00	233.470	0.00	0.00	0.00	0.00	1707527.33	14353543.98	39°31'33.6320"N	80°45'43.2229"W	0.00	0.000	0.00	0.00	0.00	
25.50	0.000	233.470	25.50	0.00	0.00	0.00	1707527.33	14353543.98	39°31'33.6320"N	80°45'43.2229"W	0.00	0.000	0.00	0.00	0.00	
100.00	0.190	233.470	100.00	-0.04	-0.07	-0.10	1707527.23	14353543.91	39°31'33.6313"N	80°45'43.2242"W	0.12	233.470	0.26	0.26	0.00	Gyrodata MS Gyro <17-1/2"> (100'-900')
200.00	0.180	228.650	200.00	-0.15	-0.28	-0.35	1707526.98	14353543.70	39°31'33.6293"N	80°45'43.2274"W	0.45	231.774	0.02	-0.01	-4.82	
300.00	0.280	157.070	300.00	-0.44	-0.59	-0.38	1707526.95	14353543.39	39°31'33.6262"N	80°45'43.2278"W	0.70	212.835	0.27	0.08	-71.58	
399.00	0.260	156.320	399.00	-0.88	-1.00	-0.20	1707527.13	14353542.98	39°31'33.6222"N	80°45'43.2256"W	1.02	191.416	0.00	0.00	-0.76	
400.00	0.260	155.980	400.00	-0.89	-1.01	-0.20	1707527.13	14353542.97	39°31'33.6221"N	80°45'43.2255"W	1.03	191.270	0.15	0.00	-34.00	
500.00	0.140	178.860	500.00	-1.23	-1.33	-0.11	1707527.22	14353542.65	39°31'33.6189"N	80°45'43.2243"W	1.34	184.522	0.14	-0.12	22.88	
600.00	0.040	240.700	600.00	-1.35	-1.47	-0.13	1707527.20	14353542.51	39°31'33.6175"N	80°45'43.2247"W	1.48	185.178	0.13	-0.10	61.84	
700.00	0.110	164.670	700.00	-1.45	-1.58	-0.14	1707527.19	14353542.40	39°31'33.6164"N	80°45'43.2248"W	1.59	185.003	0.11	0.07	-76.03	
800.00	0.170	195.960	800.00	-1.67	-1.82	-0.15	1707527.18	14353542.16	39°31'33.6141"N	80°45'43.2250"W	1.83	184.841	0.10	0.06	31.29	
900.00	0.290	225.200	900.00	-1.91	-2.14	-0.37	1707526.96	14353541.84	39°31'33.6109"N	80°45'43.2278"W	2.17	189.925	0.16	0.12	29.24	
1000.00	0.390	237.300	999.99	-2.10	-2.50	-0.84	1707526.49	14353541.48	39°31'33.6073"N	80°45'43.2338"W	2.64	198.566	0.12	0.10	12.10	Gyrodata MS Gyro <12-1/4"> (900')(1000'-1106')
1100.00	0.600	232.190	1099.99	-2.35	-3.01	-1.54	1707525.79	14353540.97	39°31'33.6024"N	80°45'43.2427"W	3.38	207.126	0.21	0.21	-5.11	
1106.00	0.590	234.380	1105.99	-2.37	-3.04	-1.59	1707525.74	14353540.94	39°31'33.6020"N	80°45'43.2433"W	3.43	207.584	0.41	-0.17	36.50	
1136.00	0.510	242.110	1135.99	-2.44	-3.20	-1.83	1707525.50	14353540.78	39°31'33.6005"N	80°45'43.2465"W	3.69	209.844	0.36	-0.27	25.77	APS EM <12-1/4"> (1106')(1136'-3354')
1231.00	0.600	243.340	1230.98	-2.57	-3.62	-2.65	1707524.68	14353540.36	39°31'33.5964"N	80°45'43.2569"W	4.49	216.246	0.10	0.09	1.29	
1325.00	0.760	231.300	1324.98	-2.85	-4.23	-3.58	1707523.75	14353539.75	39°31'33.5903"N	80°45'43.2688"W	5.54	220.243	0.23	0.17	-12.81	
1420.00	0.820	219.900	1419.97	-3.42	-5.14	-4.51	1707522.83	14353538.84	39°31'33.5813"N	80°45'43.2806"W	6.84	221.221	0.18	0.06	-12.00	
1514.00	0.840	222.110	1513.96	-4.11	-6.17	-5.40	1707521.93	14353537.81	39°31'33.5712"N	80°45'43.2921"W	8.20	221.188	0.04	0.02	2.35	
1608.00	0.840	216.850	1607.95	-4.83	-7.23	-6.28	1707521.06	14353536.75	39°31'33.5607"N	80°45'43.3033"W	9.58	220.942	0.08	0.00	-5.60	
1702.00	1.040	213.260	1701.94	-5.74	-8.50	-7.16	1707520.18	14353535.49	39°31'33.5482"N	80°45'43.3146"W	11.11	220.100	0.22	0.21	-3.82	
1797.00	0.980	214.400	1796.92	-6.76	-9.89	-8.09	1707519.25	14353534.09	39°31'33.5345"N	80°45'43.3265"W	12.78	219.278	0.07	-0.06	1.20	
1891.00	0.580	212.200	1890.91	-7.54	-10.96	-8.80	1707518.54	14353533.03	39°31'33.5240"N	80°45'43.3356"W	14.05	218.760	0.43	-0.43	-2.34	
1985.00	0.640	181.250	1984.91	-8.34	-11.88	-9.06	1707518.27	14353532.10	39°31'33.5148"N	80°45'43.3390"W	14.94	217.326	0.35	0.06	-32.93	
2079.00	0.720	171.550	2078.90	-9.41	-12.99	-8.99	1707518.35	14353530.99	39°31'33.5039"N	80°45'43.3380"W	15.80	214.668	0.15	0.09	-10.32	
2173.00	0.660	160.210	2172.89	-10.53	-14.09	-8.72	1707518.62	14353529.90	39°31'33.4931"N	80°45'43.3346"W	16.56	211.747	0.16	-0.06	-12.06	
2268.00	0.600	169.440	2267.89	-11.57	-15.09	-8.44	1707518.89	14353528.90	39°31'33.4831"N	80°45'43.3311"W	17.29	209.217	0.12	-0.06	9.72	
2362.00	0.570	135.910	2361.88	-12.48	-15.91	-8.02	1707519.31	14353528.08	39°31'33.4750"N	80°45'43.3259"W	17.82	206.763	0.36	-0.03	-35.67	
2456.00	0.630	153.510	2455.88	-13.42	-16.71	-7.47	1707519.87	14353527.28	39°31'33.4671"N	80°45'43.3188"W	18.30	204.083	0.21	0.06	18.72	

RECEIVED  
 Office of Oil and Gas  
 FEB 24 2023  
 WV Department of  
 Environmental Protection



# Actual Wellpath Report

Baldy Unit 1H AWP Proj: 25744'

Page 3 of 14



## REFERENCE WELLPATH IDENTIFICATION

Operator	ANTERO RESOURCES CORPORATION	Well	Baldy Unit 1H
Field	Wetzel	API	47-103-03478-0000
Facility	Red Lady Pad	Wellbore	Baldy Unit 1H AWB
Slot	Slot C		

## WELLPATH DATA (286 stations)

MD [ft]	Inclination [°]	Azimuth [°]	TVD [ft]	Vert Sect [ft]	North [ft]	East [ft]	Grid East [US ft]	Grid North [US ft]	Latitude	Longitude	Closure Dist [ft]	Closure Dir [°]	DLS [°/100ft]	Build Rate [°/100ft]	Turn Rate [°/100ft]	Comments
2551.00	0.570	144.090	2550.87	-14.38	-17.56	-6.96	1707520.38	14353526.43	39°31'33.4587"N	80°45'43.3123"W	18.89	201.617	0.12	-0.06	-9.92	
2650.00	0.510	139.190	2649.87	-15.26	-18.29	-6.38	1707520.95	14353525.70	39°31'33.4514"N	80°45'43.3050"W	19.37	199.232	0.08	-0.06	-4.95	
2745.00	0.450	135.690	2744.87	-15.99	-18.88	-5.84	1707521.49	14353525.11	39°31'33.4456"N	80°45'43.2982"W	19.76	197.201	0.07	-0.06	-3.68	
2839.00	0.470	125.120	2838.86	-16.64	-19.36	-5.27	1707522.06	14353524.63	39°31'33.4408"N	80°45'43.2909"W	20.07	195.227	0.09	0.02	-11.24	
2934.00	0.300	117.560	2933.86	-17.13	-19.70	-4.73	1707522.60	14353524.29	39°31'33.4374"N	80°45'43.2840"W	20.26	193.503	0.19	-0.18	-7.96	
3029.00	0.330	126.880	3028.86	-17.54	-19.98	-4.29	1707523.04	14353524.01	39°31'33.4347"N	80°45'43.2784"W	20.44	192.123	0.06	0.03	9.81	
3123.00	0.240	146.700	3122.86	-17.95	-20.31	-3.97	1707523.36	14353523.68	39°31'33.4314"N	80°45'43.2743"W	20.69	191.054	0.14	-0.10	21.09	
3218.00	0.100	33.080	3217.86	-18.09	-20.40	-3.81	1707523.52	14353523.58	39°31'33.4305"N	80°45'43.2723"W	20.76	190.584	0.31	-0.15	-119.60	
3312.00	0.400	280.620	3311.86	-17.88	-20.28	-4.09	1707523.24	14353523.71	39°31'33.4318"N	80°45'43.2758"W	20.68	191.406	0.18	0.32	-119.64	
3354.00	0.150	88.940	3353.86	-17.83	-20.25	-4.18	1707523.15	14353523.74	39°31'33.4320"N	80°45'43.2770"W	20.67	191.664	1.30	-0.60	400.76	
3420.00	0.390	309.280	3419.86	-17.66	-20.10	-4.27	1707523.06	14353523.88	39°31'33.4335"N	80°45'43.2781"W	20.55	191.984	0.78	0.36	-211.61	APS EM <8-3/4"> (3354')(3420'-5975')
3515.00	0.390	22.870	3514.85	-17.15	-19.60	-4.39	1707522.94	14353524.39	39°31'33.4384"N	80°45'43.2797"W	20.09	192.629	0.49	0.00	77.46	
3610.00	0.790	77.030	3609.85	-16.97	-19.16	-3.63	1707523.70	14353524.83	39°31'33.4428"N	80°45'43.2699"W	19.50	190.724	0.68	0.42	57.01	
3704.00	0.070	96.670	3703.85	-17.06	-19.02	-2.94	1707524.39	14353524.97	39°31'33.4442"N	80°45'43.2611"W	19.24	188.786	0.77	-0.77	20.89	
3798.00	0.440	32.010	3797.85	-16.86	-18.72	-2.69	1707524.64	14353525.27	39°31'33.4471"N	80°45'43.2579"W	18.91	188.181	0.44	0.39	-68.79	
3893.00	0.400	355.670	3892.84	-16.31	-18.08	-2.52	1707524.81	14353525.91	39°31'33.4534"N	80°45'43.2557"W	18.25	187.944	0.28	-0.04	-38.25	
3988.00	0.170	313.640	3987.84	-15.86	-17.65	-2.65	1707524.68	14353526.34	39°31'33.4577"N	80°45'43.2574"W	17.85	188.538	0.31	-0.24	-44.24	
4082.00	0.120	315.880	4081.84	-15.65	-17.48	-2.82	1707524.51	14353526.50	39°31'33.4593"N	80°45'43.2595"W	17.71	189.160	0.05	-0.05	2.38	
4177.00	0.760	316.000	4176.84	-14.99	-16.96	-3.33	1707524.01	14353527.03	39°31'33.4645"N	80°45'43.2660"W	17.28	191.097	0.67	0.67	0.13	
4272.00	0.860	297.260	4271.83	-13.90	-16.18	-4.40	1707522.93	14353527.81	39°31'33.4723"N	80°45'43.2796"W	16.77	195.206	0.30	0.11	-19.73	
4366.00	0.420	336.840	4365.82	-13.05	-15.54	-5.16	1707522.17	14353528.45	39°31'33.4786"N	80°45'43.2893"W	16.37	198.370	0.64	-0.47	42.11	
4460.00	0.820	324.390	4459.82	-12.06	-14.68	-5.69	1707521.64	14353529.31	39°31'33.4871"N	80°45'43.2960"W	15.74	201.183	0.45	0.43	-13.24	
4555.00	0.140	350.290	4554.81	-11.30	-14.01	-6.10	1707521.23	14353529.98	39°31'33.4938"N	80°45'43.3013"W	15.28	203.540	0.73	-0.72	27.26	
4649.00	0.210	313.990	4648.81	-11.03	-13.78	-6.25	1707521.09	14353530.21	39°31'33.4961"N	80°45'43.3031"W	15.13	204.390	0.14	0.07	-38.62	
4744.00	0.150	315.530	4743.81	-10.77	-13.57	-6.46	1707520.87	14353530.42	39°31'33.4981"N	80°45'43.3058"W	15.02	205.458	0.06	-0.06	1.62	
4838.00	0.620	335.910	4837.81	-10.15	-13.01	-6.75	1707520.58	14353530.97	39°31'33.5036"N	80°45'43.3096"W	14.66	207.422	0.51	0.50	21.68	
4933.00	0.510	314.540	4932.81	-9.26	-12.25	-7.26	1707520.07	14353531.74	39°31'33.5112"N	80°45'43.3160"W	14.24	210.669	0.25	-0.12	-22.49	
5027.00	1.620	128.210	5026.80	-10.00	-12.78	-6.52	1707520.82	14353531.21	39°31'33.5059"N	80°45'43.3065"W	14.34	207.026	2.26	1.18	184.76	
5124.00	4.370	150.860	5123.66	-14.79	-16.85	-3.64	1707523.69	14353527.13	39°31'33.4656"N	80°45'43.2700"W	17.24	192.187	3.03	2.84	23.35	
5218.00	5.520	157.820	5217.31	-22.82	-24.17	-0.19	1707527.14	14353519.82	39°31'33.3932"N	80°45'43.2262"W	24.17	180.448	1.38	1.22	7.40	

RECEIVED  
Office of Oil and Gas  
FEB 24 2023  
WV Department of  
Environmental Protection



# Actual Wellpath Report

Baldy Unit 1H AWP Proj: 25744'

Page 4 of 14



REFERENCE WELLPATH IDENTIFICATION				
Operator	ANTERO RESOURCES CORPORATION		Well	Baldy Unit 1H
Field	Wetzel		API	47-103-03478-0000
Facility	Red Lady Pad		Wellbore	Baldy Unit 1H AWB
Slot	Slot C			

WELLPATH DATA (286 stations) † = interpolated, ‡ = extrapolated station																
MD [ft]	Inclination [°]	Azimuth [°]	TVD [ft]	Vert Sect [ft]	North [ft]	East [ft]	Grid East [US ft]	Grid North [US ft]	Latitude	Longitude	Closure Dist [ft]	Closure Dir [°]	DLS [°/100ft]	Build Rate [°/100ft]	Turn Rate [°/100ft]	Comments
5313.00	5.280	162.620	5311.89	-31.75	-32.57	2.84	1707530.17	14353511.42	39°31'33.3101"N	80°45'43.1878"W	32.69	175.014	0.54	-0.25	5.05	
5407.00	7.210	151.270	5405.33	-41.89	-41.87	6.97	1707534.30	14353502.12	39°31'33.2180"N	80°45'43.1354"W	42.45	170.550	2.43	2.05	-12.07	
5502.00	6.410	152.720	5499.66	-53.00	-51.81	12.27	1707539.59	14353492.19	39°31'33.1196"N	80°45'43.0682"W	53.25	166.681	0.86	-0.84	1.53	
5597.00	7.300	164.570	5593.98	-64.28	-62.35	16.30	1707543.63	14353481.66	39°31'33.0154"N	80°45'43.0170"W	64.44	165.346	1.75	0.94	12.47	
5691.00	6.670	158.150	5687.28	-75.69	-73.17	19.92	1707547.25	14353470.84	39°31'32.9084"N	80°45'42.9712"W	75.83	164.768	1.07	-0.67	-6.83	
5786.00	8.510	170.950	5781.45	-88.13	-85.23	23.08	1707550.40	14353458.78	39°31'32.7891"N	80°45'42.9313"W	88.30	164.847	2.62	1.94	13.47	
5880.00	9.360	182.580	5874.32	-102.10	-99.74	23.83	1707551.15	14353444.28	39°31'32.6457"N	80°45'42.9222"W	102.55	166.561	2.12	0.90	12.37	
5975.00	8.220	180.820	5968.20	-115.70	-114.25	23.39	1707550.71	14353429.78	39°31'32.5023"N	80°45'42.9283"W	116.62	168.431	1.23	-1.20	-1.85	
6035.00	7.460	178.670	6027.64	-123.45	-122.43	23.42	1707550.74	14353421.60	39°31'32.4214"N	80°45'42.9282"W	124.65	169.172	1.36	-1.27	-3.58	BH AT Curve <8-1/2"> (5975')(6035'-25719')
6084.00	7.520	192.670	6076.23	-129.23	-128.74	22.79	1707550.11	14353415.29	39°31'32.3591"N	80°45'42.9365"W	130.74	169.962	3.72	0.12	28.57	
6179.00	7.580	250.000	6170.53	-134.67	-136.96	15.53	1707542.85	14353407.08	39°31'32.2780"N	80°45'43.0294"W	137.84	173.532	7.61	0.06	60.35	
6273.00	7.400	290.110	6263.79	-131.00	-137.00	4.01	1707531.34	14353407.04	39°31'32.2779"N	80°45'43.1764"W	137.06	178.324	5.45	-0.19	42.67	
6368.00	10.830	335.070	6357.69	-118.27	-126.79	-5.51	1707521.82	14353417.24	39°31'32.3791"N	80°45'43.2976"W	126.91	182.490	8.04	3.61	47.33	
6462.00	17.680	347.200	6448.76	-95.26	-104.83	-12.41	1707514.93	14353439.19	39°31'32.5963"N	80°45'43.3848"W	105.56	186.750	7.91	7.29	12.90	
6557.00	24.800	335.340	6537.29	-61.03	-72.60	-23.94	1707503.40	14353471.41	39°31'32.9152"N	80°45'43.5309"W	76.44	198.248	8.72	7.49	-12.48	
6592.00†	27.374	337.248	6568.72	-45.70	-58.50	-30.11	1707497.23	14353485.50	39°31'33.0546"N	80°45'43.6092"W	65.80	207.235	7.73	7.35	5.45	Sycamore: 6592' MD
6651.00	31.760	339.810	6620.03	-16.63	-31.41	-40.72	1707486.62	14353512.59	39°31'33.3227"N	80°45'43.7437"W	51.43	232.359	7.73	7.43	4.34	
6737.00†	39.391	344.698	6689.94	33.32	16.24	-55.76	1707471.59	14353560.21	39°31'33.7940"N	80°45'43.9340"W	58.08	286.235	9.46	8.87	5.68	Middlesex: 6737' MD
6745.00	40.110	345.070	6696.09	38.42	21.18	-57.09	1707470.26	14353565.15	39°31'33.8428"N	80°45'43.9508"W	60.89	290.349	9.46	8.98	4.65	
6840.00	49.830	346.330	6783.22	105.27	86.17	-73.60	1707453.76	14353630.12	39°31'34.4856"N	80°45'44.1592"W	113.32	319.500	10.27	10.23	1.33	
6885.00†	53.773	345.638	6791.04	140.50	120.47	-82.17	1707445.20	14353664.40	39°31'34.8249"N	80°45'44.2674"W	145.82	325.705	8.84	8.76	-1.54	Burkett: 6885' MD
6934.00	58.070	344.960	6818.49	180.98	159.72	-92.47	1707434.90	14353703.63	39°31'35.2130"N	80°45'44.3976"W	184.55	329.931	8.84	8.77	-1.38	
6935.00†	58.201	344.951	6819.02	181.83	160.54	-92.69	1707434.68	14353704.45	39°31'35.2211"N	80°45'44.4004"W	185.37	329.999	13.13	13.11	-0.86	Tully: 6935' MD
6981.00	64.230	344.580	6841.16	222.05	199.42	-103.28	1707424.09	14353743.32	39°31'35.6056"N	80°45'44.5342"W	224.58	332.620	13.13	13.11	-0.81	
7028.00	68.920	343.580	6859.84	265.11	240.88	-115.11	1707412.26	14353784.76	39°31'36.0157"N	80°45'44.6839"W	266.97	334.457	10.17	9.98	-2.13	
7034.00†	69.473	343.445	6861.97	270.71	246.25	-116.71	1707410.67	14353790.14	39°31'36.0689"N	80°45'44.7040"W	272.51	334.643	9.46	9.22	-2.25	Hamilton: 7034' MD
7123.00	77.690	341.540	6887.11	355.98	327.59	-142.39	1707384.99	14353871.44	39°31'36.8734"N	80°45'45.0291"W	357.20	336.507	9.46	9.23	-2.14	
7125.00†	77.799	341.484	6887.53	357.94	329.44	-143.01	1707384.37	14353873.29	39°31'36.8917"N	80°45'45.0369"W	359.14	336.534	6.12	5.47	-2.81	Marcellus POE: 7125' MD
7217.00	82.840	338.940	6903.00	448.58	414.74	-173.72	1707353.68	14353958.55	39°31'37.7355"N	80°45'45.4259"W	449.65	337.273	6.12	5.48	-2.76	
7312.00	89.050	339.440	6909.71	543.23	503.27	-207.36	1707320.05	14354047.05	39°31'38.6114"N	80°45'45.8523"W	544.32	337.607	6.56	6.54	0.53	



# Actual Wellpath Report

Baldy Unit 1H AWP Proj: 25744'

Page 5 of 14



REFERENCE WELLPATH IDENTIFICATION				
Operator	ANTERO RESOURCES CORPORATION		Well	Baldy Unit 1H
Field	Wetzel		API	47-103-03478-0000
Facility	Red Lady Pad		Wellbore	Baldy Unit 1H AWB
Slot	Slot C			

WELLPATH DATA (286 stations)																
MD [ft]	Inclination [°]	Azimuth [°]	TVD [ft]	Vert Sect [ft]	North [ft]	East [ft]	Grid East [US ft]	Grid North [US ft]	Latitude	Longitude	Closure Dist [ft]	Closure Dir [°]	DLS ["/100ft]	Build Rate ["/100ft]	Turn Rate ["/100ft]	Comments
7407.00	90.430	339.030	6910.14	638.17	592.10	-241.04	1707286.38	14354135.84	39°31'39.4902"N	80°45'46.2791"W	639.28	337.849	1.52	1.45	-0.43	
7501.00	90.430	339.130	6909.44	732.10	679.90	-274.61	1707252.83	14354223.61	39°31'40.3588"N	80°45'46.7045"W	733.26	338.007	0.11	0.00	0.11	
7595.00	89.080	338.880	6909.84	826.03	767.66	-308.29	1707219.17	14354311.33	39°31'41.2270"N	80°45'47.1313"W	827.25	338.120	1.46	-1.44	-0.27	
7691.00	89.820	340.440	6910.76	921.98	857.66	-341.65	1707185.81	14354401.30	39°31'42.1175"N	80°45'47.5541"W	923.21	338.280	1.80	0.77	1.62	
7785.00	89.850	340.920	6911.03	1015.98	946.37	-372.75	1707154.73	14354489.97	39°31'42.9950"N	80°45'47.9480"W	1017.13	338.502	0.51	0.03	0.51	
7879.00	90.310	342.070	6910.90	1109.98	1035.51	-402.58	1707124.91	14354579.08	39°31'43.8767"N	80°45'48.3258"W	1111.01	338.755	1.32	0.49	1.22	
7973.00	90.620	340.770	6910.14	1203.97	1124.60	-432.53	1707094.97	14354668.14	39°31'44.7581"N	80°45'48.7050"W	1204.91	338.963	1.42	0.33	-1.38	
8068.00	90.280	341.140	6909.39	1298.97	1214.40	-463.53	1707063.98	14354757.90	39°31'45.6464"N	80°45'49.0976"W	1299.86	339.108	0.53	-0.36	0.39	
8163.00	92.430	341.430	6907.15	1393.93	1304.35	-494.00	1707033.52	14354847.81	39°31'46.5361"N	80°45'49.4835"W	1394.76	339.257	2.28	2.26	0.31	
8257.00	90.460	340.550	6904.77	1487.90	1393.19	-524.61	1707002.93	14354936.61	39°31'47.4149"N	80°45'49.8711"W	1488.69	339.366	2.30	-2.10	-0.94	
8352.00	90.150	340.790	6904.27	1582.89	1482.83	-556.06	1706971.49	14355026.22	39°31'48.3017"N	80°45'50.2694"W	1583.66	339.444	0.41	-0.33	0.25	
8446.00	90.430	341.100	6903.79	1676.89	1571.68	-586.74	1706940.82	14355115.03	39°31'49.1806"N	80°45'50.6581"W	1677.63	339.528	0.44	0.30	0.33	
8541.00	90.740	341.230	6902.82	1771.88	1661.59	-617.41	1706910.16	14355204.91	39°31'50.0700"N	80°45'51.0465"W	1772.59	339.616	0.35	0.33	0.14	
8635.00	90.250	341.080	6902.01	1865.88	1750.54	-647.77	1706879.81	14355293.83	39°31'50.9500"N	80°45'51.4310"W	1866.55	339.693	0.55	-0.52	-0.16	
8729.00	90.460	340.570	6901.43	1959.88	1839.33	-678.65	1706848.95	14355382.58	39°31'51.8283"N	80°45'51.8221"W	1960.53	339.748	0.59	0.22	-0.54	
8824.00	90.800	341.250	6900.38	2054.87	1929.10	-709.72	1706817.89	14355472.31	39°31'52.7163"N	80°45'52.2156"W	2055.51	339.801	0.80	0.36	0.72	
8919.00	89.660	340.780	6900.00	2149.86	2018.93	-740.62	1706787.00	14355562.10	39°31'53.6049"N	80°45'52.6070"W	2150.48	339.855	1.30	-1.20	-0.49	
9014.00	90.120	341.400	6900.19	2244.86	2108.80	-771.41	1706756.23	14355651.94	39°31'54.4939"N	80°45'52.9969"W	2245.46	339.907	0.81	0.48	0.65	
9108.00	89.780	341.180	6900.27	2338.86	2197.83	-801.56	1706726.09	14355740.94	39°31'55.3746"N	80°45'53.3788"W	2339.44	339.963	0.43	-0.36	-0.23	
9203.00	89.600	340.930	6900.78	2433.86	2287.68	-832.40	1706695.26	14355830.75	39°31'56.2635"N	80°45'53.7694"W	2434.42	340.005	0.32	-0.19	-0.26	
9297.00	90.030	341.510	6901.09	2527.86	2376.88	-862.67	1706665.01	14355919.71	39°31'57.1438"N	80°45'54.1527"W	2528.40	340.051	0.77	0.46	0.62	
9392.00	89.110	340.940	6901.80	2622.86	2466.62	-893.24	1706634.44	14356009.62	39°31'58.0335"N	80°45'54.5399"W	2623.37	340.093	1.14	-0.97	-0.60	
9486.00	89.010	340.100	6903.34	2716.84	2555.22	-924.58	1706603.11	14356098.19	39°31'58.9100"N	80°45'54.9369"W	2717.36	340.108	0.90	-0.11	-0.89	
9581.00	90.460	341.370	6903.78	2811.83	2644.90	-955.93	1706571.78	14356187.83	39°31'59.7971"N	80°45'55.3340"W	2812.35	340.129	2.03	1.53	1.34	
9676.00	89.690	340.340	6903.66	2906.82	2734.64	-987.08	1706540.64	14356277.54	39°32'0.6849"N	80°45'55.7286"W	2907.34	340.153	1.35	-0.81	-1.08	
9770.00	90.740	341.050	6903.30	3000.82	2823.36	-1018.16	1706509.58	14356366.21	39°32'1.5624"N	80°45'56.1223"W	3001.33	340.170	1.35	1.12	0.76	
9864.00	90.490	340.010	6902.29	3094.80	2911.97	-1049.49	1706478.26	14356454.80	39°32'2.4391"N	80°45'56.5192"W	3095.32	340.181	1.14	-0.27	-1.11	
9959.00	89.570	340.320	6902.24	3189.78	3001.34	-1081.72	1706446.04	14356544.13	39°32'3.3231"N	80°45'56.9276"W	3190.32	340.180	1.02	-0.97	0.33	
10053.00	91.420	342.030	6901.43	3283.77	3090.30	-1112.05	1706415.72	14356633.05	39°32'4.2031"N	80°45'57.3118"W	3284.29	340.209	2.68	1.97	1.82	
10147.00	90.550	339.220	6899.82	3377.74	3178.95	-1143.22	1706384.56	14356721.67	39°32'5.0801"N	80°45'57.7067"W	3378.27	340.220	3.13	-0.93	-2.99	

RECEIVED  
Office of Oil and Gas  
FEB 24 2023  
WV Department of  
Environmental Protection



# Actual Wellpath Report

Baldy Unit 1H AWP Proj: 25744'

Page 6 of 14



REFERENCE WELLPATH IDENTIFICATION				
Operator	ANTERO RESOURCES CORPORATION		Well	Baldy Unit 1H
Field	Wetzel		API	47-103-03478-0000
Facility	Red Lady Pad		Wellbore	Baldy Unit 1H AWB
Slot	Slot C			

WELLPATH DATA (286 stations)																
MD [ft]	Inclination [°]	Azimuth [°]	TVD [ft]	Vert Sect [ft]	North [ft]	East [ft]	Grid East [US ft]	Grid North [US ft]	Latitude	Longitude	Closure Dist [ft]	Closure Dir [°]	DLS ["/100ft]	Build Rate ["/100ft]	Turn Rate ["/100ft]	Comments
10242.00	90.180	338.190	6899.21	3472.65	3267.46	-1177.72	1706350.07	14356810.15	39°32'5.9558"N	80°45'58.1441"W	3473.23	340.179	1.15	-0.39	-1.08	
10337.00	90.180	338.410	6898.91	3567.52	3355.73	-1212.85	1706314.96	14356898.38	39°32'6.8290"N	80°45'58.5895"W	3568.18	340.129	0.23	0.00	0.23	
10431.00	89.820	339.310	6898.91	3661.44	3443.40	-1246.75	1706281.07	14356986.02	39°32'7.6964"N	80°45'59.0193"W	3662.16	340.096	1.03	-0.38	0.96	
10526.00	89.080	340.760	6899.82	3756.41	3532.69	-1279.19	1706248.65	14357075.26	39°32'8.5797"N	80°45'59.4303"W	3757.15	340.095	1.71	-0.78	1.53	
10620.00	89.690	342.490	6900.83	3850.40	3621.88	-1308.81	1706219.03	14357164.43	39°32'9.4620"N	80°45'59.8055"W	3851.11	340.132	1.95	0.65	1.84	
10715.00	91.600	340.900	6899.76	3945.38	3712.06	-1338.65	1706189.21	14357254.57	39°32'10.3540"N	80°46'0.1833"W	3946.06	340.170	2.62	2.01	-1.67	
10809.00	90.770	339.050	6897.82	4039.34	3800.36	-1370.83	1706157.05	14357342.83	39°32'11.2275"N	80°46'0.5911"W	4040.04	340.165	2.16	-0.88	-1.97	
10904.00	89.660	335.710	6897.46	4134.11	3888.04	-1407.36	1706120.53	14357430.47	39°32'12.0950"N	80°46'1.0545"W	4134.91	340.101	3.70	-1.17	-3.52	
10998.00	89.380	337.050	6898.25	4227.77	3974.16	-1445.02	1706082.88	14357516.56	39°32'12.9471"N	80°46'1.5323"W	4228.71	340.019	1.46	-0.30	1.43	
11093.00	89.630	340.040	6899.07	4322.65	4062.56	-1479.76	1706048.15	14357604.93	39°32'13.8217"N	80°46'1.9728"W	4323.67	339.986	3.16	0.26	3.15	
11187.00	89.600	342.440	6899.70	4416.64	4151.56	-1509.99	1706017.94	14357693.89	39°32'14.7020"N	80°46'2.3557"W	4417.63	340.013	2.55	-0.03	2.55	
11282.00	89.420	342.130	6900.52	4511.62	4242.05	-1538.90	1705989.04	14357784.34	39°32'15.5971"N	80°46'2.7217"W	4512.56	340.061	0.38	-0.19	-0.33	
11376.00	90.650	341.790	6900.46	4605.61	4331.43	-1568.01	1705959.95	14357873.69	39°32'16.4812"N	80°46'3.0903"W	4606.51	340.099	1.36	1.31	-0.36	
11471.00	89.720	342.000	6900.15	4700.60	4421.72	-1597.53	1705930.44	14357963.95	39°32'17.3744"N	80°46'3.4641"W	4701.46	340.136	1.00	-0.98	0.22	
11565.00	90.550	340.940	6899.93	4794.60	4510.84	-1627.40	1705900.57	14358053.03	39°32'18.2560"N	80°46'3.8424"W	4795.43	340.162	1.43	0.88	-1.13	
11660.00	89.480	342.810	6899.90	4889.59	4601.13	-1656.95	1705871.03	14358143.28	39°32'19.1490"N	80°46'4.2166"W	4890.38	340.195	2.27	-1.13	1.97	
11754.00	90.950	341.710	6899.55	4983.57	4690.65	-1685.59	1705842.41	14358232.77	39°32'20.0345"N	80°46'4.5793"W	4984.32	340.234	1.95	1.56	-1.17	
11849.00	89.820	342.170	6898.91	5078.55	4780.97	-1715.04	1705812.97	14358323.05	39°32'20.9279"N	80°46'4.9522"W	5079.27	340.266	1.28	-1.19	0.48	
11944.00	89.540	343.430	6899.44	5173.52	4871.72	-1743.13	1705784.89	14358413.76	39°32'21.8255"N	80°46'5.3078"W	5174.18	340.312	1.36	-0.29	1.33	
12038.00	90.710	341.840	6899.24	5267.48	4961.43	-1771.19	1705756.85	14358503.44	39°32'22.7128"N	80°46'5.6629"W	5268.10	340.354	2.10	1.24	-1.69	
12133.00	88.740	342.300	6899.70	5362.47	5051.81	-1800.43	1705727.61	14358593.78	39°32'23.6068"N	80°46'6.0332"W	5363.05	340.384	2.13	-2.07	0.48	
12227.00	90.340	341.830	6900.45	5456.45	5141.23	-1829.38	1705698.68	14358683.17	39°32'24.4914"N	80°46'6.3997"W	5457.00	340.413	1.77	1.70	-0.50	
12322.00	90.060	342.690	6900.12	5551.43	5231.71	-1858.32	1705669.75	14358773.62	39°32'25.3864"N	80°46'6.7662"W	5551.95	340.445	0.95	-0.29	0.91	
12417.00	89.110	341.370	6900.81	5646.42	5322.07	-1887.63	1705640.45	14358863.94	39°32'26.2802"N	80°46'7.1373"W	5646.91	340.471	1.71	-1.00	-1.39	
12511.00	90.710	342.650	6900.95	5740.40	5411.47	-1916.66	1705611.43	14358953.31	39°32'27.1645"N	80°46'7.5049"W	5740.87	340.497	2.18	1.70	1.36	
12606.00	89.140	341.200	6901.08	5835.39	5501.78	-1946.13	1705581.97	14359043.58	39°32'28.0578"N	80°46'7.8782"W	5835.84	340.520	2.25	-1.65	-1.53	
12700.00	90.090	342.610	6901.71	5929.38	5591.13	-1975.33	1705552.79	14359132.89	39°32'28.9415"N	80°46'8.2479"W	5929.81	340.542	1.81	1.01	1.50	
12795.00	89.350	342.030	6902.17	6024.36	5681.64	-2004.18	1705523.95	14359223.36	39°32'29.8368"N	80°46'8.6132"W	6024.76	340.570	0.99	-0.78	-0.61	
12890.00	90.180	342.560	6902.56	6119.34	5772.14	-2033.07	1705495.07	14359313.82	39°32'30.7319"N	80°46'8.9790"W	6119.72	340.597	1.04	0.87	0.56	
12985.00	89.420	341.460	6902.90	6214.33	5862.49	-2062.41	1705465.74	14359404.14	39°32'31.6257"N	80°46'9.3505"W	6214.68	340.618	1.41	-0.80	-1.16	

RECEIVED  
 Office of Oil and Gas  
 FEB 24 2023  
 WV Department of  
 Environmental Protection



# Actual Wellpath Report

Baldy Unit 1H AWP Proj: 25744'

Page 7 of 14



REFERENCE WELLPATH IDENTIFICATION			
Operator	ANTERO RESOURCES CORPORATION	Well	Baldy Unit 1H
Field	Wetzel	API	47-103-03478-0000
Facility	Red Lady Pad	Wellbore	Baldy Unit 1H AWP
Slot	Slot C		

WELLPATH DATA (286 stations)																
MD [ft]	Inclination [°]	Azimuth [°]	TVD [ft]	Vert Sect [ft]	North [ft]	East [ft]	Grid East [US ft]	Grid North [US ft]	Latitude	Longitude	Closure Dist [ft]	Closure Dir [°]	DLS ["/100ft]	Build Rate ["/100ft]	Turn Rate ["/100ft]	Comments
13079.00	90.180	342.380	6903.22	6308.32	5951.84	-2091.58	1705436.58	14359493.46	39°32'32.5095"N	80°46'9.7200"W	6308.66	340.638	1.27	0.81	0.98	
13174.00	89.570	342.440	6903.43	6403.30	6042.40	-2120.29	1705407.88	14359583.98	39°32'33.4053"N	80°46'10.0835"W	6403.61	340.664	0.65	-0.64	0.06	
13268.00	90.680	342.150	6903.23	6497.28	6131.95	-2148.88	1705379.31	14359673.49	39°32'34.2910"N	80°46'10.4454"W	6497.57	340.688	1.22	1.18	-0.31	
13363.00	89.380	340.490	6903.18	6592.28	6221.94	-2179.30	1705348.89	14359763.45	39°32'35.1812"N	80°46'10.8308"W	6592.56	340.697	2.22	-1.37	-1.75	
13458.00	89.850	343.070	6903.81	6687.26	6312.17	-2209.00	1705319.21	14359853.64	39°32'36.0737"N	80°46'11.2070"W	6687.53	340.712	2.76	0.49	2.72	
13552.00	90.090	341.140	6903.86	6781.25	6401.61	-2237.88	1705290.34	14359943.05	39°32'36.9584"N	80°46'11.5728"W	6781.50	340.731	2.07	0.26	-2.05	
13647.00	89.660	342.830	6904.07	6876.23	6491.95	-2267.26	1705260.97	14360033.36	39°32'37.8520"N	80°46'11.9448"W	6876.48	340.749	1.84	-0.45	1.78	
13741.00	88.800	341.660	6905.33	6970.21	6581.47	-2295.92	1705232.32	14360122.83	39°32'38.7374"N	80°46'12.3078"W	6970.43	340.769	1.54	-0.91	-1.24	
13836.00	90.550	342.180	6905.87	7065.20	6671.77	-2325.40	1705202.85	14360213.10	39°32'39.6307"N	80°46'12.6811"W	7065.41	340.784	1.92	1.84	0.55	
13931.00	89.050	341.720	6906.20	7160.18	6762.09	-2354.84	1705173.43	14360303.39	39°32'40.5241"N	80°46'13.0539"W	7160.39	340.800	1.65	-1.58	-0.48	
14025.00	90.250	342.190	6906.78	7254.17	6851.48	-2383.96	1705144.32	14360392.72	39°32'41.4081"N	80°46'13.4227"W	7254.36	340.815	1.37	1.28	0.50	
14119.00	88.460	341.410	6907.84	7348.16	6940.75	-2413.31	1705114.98	14360481.98	39°32'42.2913"N	80°46'13.7945"W	7348.34	340.827	2.08	-1.90	-0.83	
14214.00	89.540	341.950	6909.49	7443.14	7030.92	-2443.17	1705085.13	14360572.11	39°32'43.1832"N	80°46'14.1727"W	7443.31	340.838	1.27	1.14	0.57	
14308.00	88.740	342.250	6910.91	7537.12	7120.36	-2472.06	1705056.26	14360661.51	39°32'44.0679"N	80°46'14.5385"W	7537.28	340.854	0.91	-0.85	0.32	
14403.00	90.060	341.670	6911.90	7632.10	7210.68	-2501.47	1705026.85	14360751.80	39°32'44.9613"N	80°46'14.9111"W	7632.25	340.868	1.52	1.39	-0.61	
14498.00	89.510	342.540	6912.26	7727.09	7301.08	-2530.66	1704997.67	14360842.17	39°32'45.8555"N	80°46'15.2808"W	7727.23	340.883	1.08	-0.58	0.92	
14592.00	90.120	343.210	6912.56	7821.05	7390.92	-2558.34	1704970.00	14360931.96	39°32'46.7440"N	80°46'15.6312"W	7821.17	340.907	0.96	0.65	0.71	
14686.00	89.260	342.070	6913.07	7915.02	7480.63	-2586.39	1704941.97	14361021.64	39°32'47.6314"N	80°46'15.9863"W	7915.13	340.927	1.52	-0.91	-1.21	
14781.00	90.650	342.260	6913.14	8010.00	7571.06	-2615.48	1704912.88	14361112.04	39°32'48.5259"N	80°46'16.3548"W	8010.10	340.942	1.48	1.46	0.20	
14876.00	89.570	340.990	6912.96	8105.00	7661.22	-2645.43	1704882.95	14361202.15	39°32'49.4177"N	80°46'16.7341"W	8105.09	340.950	1.75	-1.14	-1.34	
14970.00	89.450	341.300	6913.77	8198.99	7750.17	-2675.81	1704852.59	14361291.07	39°32'50.2976"N	80°46'17.1190"W	8199.09	340.952	0.35	-0.13	0.33	
15065.00	89.750	339.990	6914.43	8293.98	7839.79	-2707.29	1704821.11	14361380.66	39°32'51.1841"N	80°46'17.5180"W	8294.08	340.949	1.41	0.32	-1.38	
15160.00	89.380	340.850	6915.15	8388.97	7929.30	-2739.13	1704789.29	14361470.13	39°32'52.0695"N	80°46'17.9215"W	8389.07	340.943	0.99	-0.39	0.91	
15255.00	89.480	340.650	6916.09	8483.96	8018.98	-2770.44	1704757.98	14361559.78	39°32'52.9567"N	80°46'18.3184"W	8484.07	340.941	0.24	0.11	-0.21	
15349.00	89.820	340.040	6916.67	8577.95	8107.50	-2802.06	1704726.38	14361648.26	39°32'53.8323"N	80°46'18.7191"W	8578.06	340.934	0.74	0.36	-0.65	
15444.00	89.970	342.090	6916.84	8672.94	8197.36	-2832.89	1704695.57	14361738.08	39°32'54.7212"N	80°46'19.1097"W	8673.06	340.936	2.16	0.16	2.16	
15539.00	90.090	341.820	6916.79	8767.93	8287.68	-2862.31	1704666.15	14361828.37	39°32'55.6146"N	80°46'19.4824"W	8768.04	340.947	0.31	0.13	-0.28	
15633.00	89.540	340.720	6917.10	8861.93	8376.70	-2892.50	1704635.98	14361917.36	39°32'56.4952"N	80°46'19.8649"W	8862.04	340.950	1.31	-0.59	-1.17	
15728.00	90.340	341.590	6917.20	8956.93	8466.61	-2923.18	1704605.31	14362007.23	39°32'57.3845"N	80°46'20.2537"W	8957.03	340.952	1.24	0.84	0.92	
15823.00	90.090	338.940	6916.84	9051.91	8556.02	-2955.26	1704573.24	14362096.61	39°32'58.2690"N	80°46'20.6803"W	9052.02	340.945	2.80	-0.26	-2.79	

RECEIVED  
 Office of Oil and Gas  
 FEB 24 2023  
 WV Department of  
 Environmental Protection





# Actual Wellpath Report

Baldy Unit 1H AWP Proj: 25744'  
Page 8 of 14



REFERENCE WELLPATH IDENTIFICATION			
Operator	ANTERO RESOURCES CORPORATION	Well	Baldy Unit 1H
Field	Wetzel	API	47-103-03478-0000
Facility	Red Lady Pad	Wellbore	Baldy Unit 1H AWB
Slot	Slot C		

WELLPATH DATA (286 stations)																
MD [ft]	Inclination [°]	Azimuth [°]	TVD [ft]	Vert Sect [ft]	North [ft]	East [ft]	Grid East [US ft]	Grid North [US ft]	Latitude	Longitude	Closure Dist [ft]	Closure Dir [°]	DLS [°/100ft]	Build Rate [°/100ft]	Turn Rate [°/100ft]	Comments
15918.00	89.260	340.030	6917.38	9146.86	8644.99	-2988.55	1704539.97	14362185.54	39°32'59.1492"N	80°46'21.0824"W	9146.98	340.930	1.44	-0.87	1.15	
16012.00	91.020	341.870	6917.15	9240.85	8733.84	-3019.23	1704509.30	14362274.35	39°33'0.0280"N	80°46'21.4712"W	9240.98	340.930	2.71	1.87	1.96	
16107.00	89.630	340.200	6916.61	9335.84	8823.67	-3050.10	1704478.44	14362364.15	39°33'0.9166"N	80°46'21.8624"W	9335.97	340.931	2.29	-1.46	-1.76	
16202.00	90.430	340.340	6916.56	9430.83	8913.10	-3082.17	1704446.38	14362453.54	39°33'1.8012"N	80°46'22.2689"W	9430.96	340.924	0.85	0.84	0.15	
16297.00	90.120	340.750	6916.10	9525.82	9002.67	-3113.81	1704414.75	14362543.08	39°33'2.6873"N	80°46'22.6699"W	9525.96	340.921	0.54	-0.33	0.43	
16391.00	89.750	341.090	6916.21	9619.82	9091.51	-3144.54	1704384.04	14362631.88	39°33'3.5661"N	80°46'23.0594"W	9619.96	340.921	0.53	-0.39	0.36	
16486.00	90.460	341.680	6916.04	9714.82	9181.53	-3174.86	1704353.73	14362721.87	39°33'4.4566"N	80°46'23.4436"W	9714.95	340.925	0.97	0.75	0.62	
16581.00	89.600	340.730	6915.99	9809.81	9271.47	-3205.47	1704323.13	14362811.77	39°33'5.3462"N	80°46'23.8314"W	9809.95	340.928	1.35	-0.91	-1.00	
16675.00	90.220	340.670	6916.13	9903.81	9360.18	-3236.54	1704292.08	14362900.45	39°33'6.2238"N	80°46'24.2252"W	9903.95	340.926	0.66	0.66	-0.06	
16770.00	90.310	341.090	6915.70	9998.81	9449.94	-3267.66	1704260.97	14362990.17	39°33'7.1116"N	80°46'24.6195"W	9998.95	340.925	0.45	0.09	0.44	
16865.00	89.850	340.940	6915.56	10093.81	9539.77	-3298.56	1704230.08	14363079.97	39°33'8.0002"N	80°46'25.0112"W	10093.95	340.926	0.51	-0.48	-0.16	
16959.00	90.680	340.980	6915.13	10187.80	9628.63	-3329.23	1704199.43	14363168.79	39°33'8.8792"N	80°46'25.3998"W	10187.95	340.926	0.88	0.88	0.04	
17054.00	90.460	340.990	6914.18	10282.80	9718.44	-3360.18	1704168.49	14363258.56	39°33'9.7676"N	80°46'25.7921"W	10282.94	340.927	0.23	-0.23	0.01	
17149.00	89.970	341.480	6913.83	10377.80	9808.39	-3390.74	1704137.94	14363348.48	39°33'10.6573"N	80°46'26.1793"W	10377.94	340.930	0.73	-0.52	0.52	
17243.00	89.290	341.060	6914.43	10471.79	9897.41	-3420.92	1704107.77	14363437.46	39°33'11.5379"N	80°46'26.5618"W	10471.93	340.933	0.85	-0.72	-0.45	
17338.00	90.920	340.170	6914.26	10566.78	9987.02	-3452.45	1704076.25	14363527.04	39°33'12.4243"N	80°46'26.9615"W	10566.93	340.930	1.95	1.72	-0.94	
17432.00	92.030	343.040	6911.84	10660.74	10076.18	-3482.10	1704046.61	14363616.16	39°33'13.3062"N	80°46'27.3371"W	10660.88	340.936	3.27	1.18	3.05	
17527.00	90.920	339.700	6909.39	10755.69	10166.15	-3512.43	1704016.29	14363706.10	39°33'14.1962"N	80°46'27.7215"W	10755.83	340.940	3.70	-1.17	-3.52	
17623.00	91.140	339.540	6907.67	10851.64	10256.13	-3545.86	1703982.88	14363796.04	39°33'15.0863"N	80°46'28.1454"W	10851.79	340.928	0.28	0.23	-0.17	
17718.00	91.790	339.470	6905.24	10946.56	10345.09	-3579.11	1703949.64	14363884.96	39°33'15.9663"N	80°46'28.5670"W	10946.73	340.916	0.69	0.68	-0.07	
17812.00	92.220	339.170	6901.95	11040.45	10432.98	-3612.29	1703916.48	14363972.82	39°33'16.8358"N	80°46'28.9878"W	11040.63	340.902	0.56	0.46	-0.32	
17907.00	91.510	340.210	6898.86	11135.37	10522.02	-3645.24	1703883.53	14364061.83	39°33'17.7166"N	80°46'29.4057"W	11135.56	340.892	1.33	-0.75	1.09	
18001.00	90.370	340.020	6897.32	11229.34	10610.40	-3677.21	1703851.58	14364150.17	39°33'18.5909"N	80°46'29.8110"W	11229.54	340.885	1.23	-1.21	-0.20	
18095.00	90.770	340.730	6896.38	11323.32	10698.94	-3708.78	1703820.02	14364238.67	39°33'19.4667"N	80°46'30.2112"W	11323.53	340.881	0.87	0.43	0.76	
18190.00	91.110	340.310	6894.82	11418.30	10788.49	-3740.46	1703788.36	14364328.19	39°33'20.3525"N	80°46'30.6127"W	11418.51	340.878	0.57	0.36	-0.44	
18284.00	90.800	340.500	6893.26	11512.28	10877.03	-3771.98	1703756.85	14364416.69	39°33'21.2284"N	80°46'31.0123"W	11512.50	340.874	0.39	-0.33	0.20	
18379.00	90.770	340.840	6891.95	11607.26	10966.67	-3803.42	1703725.42	14364506.30	39°33'22.1151"N	80°46'31.4109"W	11607.49	340.873	0.36	-0.03	0.36	
18473.00	90.000	340.030	6891.32	11701.25	11055.24	-3834.90	1703693.96	14364594.83	39°33'22.9912"N	80°46'31.8099"W	11701.48	340.869	1.19	-0.82	-0.86	
18568.00	89.780	340.180	6891.51	11796.23	11144.57	-3867.22	1703661.64	14364684.12	39°33'23.8749"N	80°46'32.2198"W	11796.47	340.863	0.28	-0.23	0.16	
18663.00	89.940	340.790	6891.74	11891.22	11234.11	-3898.96	1703629.92	14364773.63	39°33'24.7606"N	80°46'32.6221"W	11891.47	340.860	0.65	0.17	0.64	

RECEIVED  
Office of Oil and Gas  
FEB 24 2023  
WV Department of  
Environmental Protection



# Actual Wellpath Report

Baldy Unit 1H AWP Proj: 25744'  
Page 9 of 14



REFERENCE WELLPATH IDENTIFICATION				
Operator	ANTERO RESOURCES CORPORATION		Well	Baldy Unit 1H
Field	Wetzel		API	47-103-03478-0000
Facility	Red Lady Pad		Wellbore	Baldy Unit 1H AWB
Slot	Slot C			

WELLPATH DATA (286 stations)																
MD [ft]	Inclination [°]	Azimuth [°]	TVD [ft]	Vert Sect [ft]	North [ft]	East [ft]	Grid East [US ft]	Grid North [US ft]	Latitude	Longitude	Closure Dist [ft]	Closure Dir [°]	DLS [°/100ft]	Build Rate [°/100ft]	Turn Rate [°/100ft]	Comments
18758.00	89.940	340.790	6891.84	11986.22	11323.82	-3930.22	1703598.67	14364863.31	39°33'25.6480"N	80°46'33.0184"W	11986.47	340.859	0.00	0.00	0.00	
18852.00	89.880	341.380	6891.98	12080.22	11412.74	-3960.69	1703568.21	14364952.19	39°33'26.5276"N	80°46'33.4046"W	12080.47	340.861	0.63	-0.06	0.63	
18947.00	90.030	341.610	6892.06	12175.22	11502.83	-3990.84	1703538.07	14365042.25	39°33'27.4187"N	80°46'33.7867"W	12175.46	340.866	0.29	0.16	0.24	
19041.00	90.120	341.650	6891.94	12269.22	11592.04	-4020.46	1703508.46	14365131.42	39°33'28.3011"N	80°46'34.1620"W	12269.46	340.872	0.10	0.10	0.04	
19136.00	89.780	341.580	6892.02	12364.21	11682.19	-4050.43	1703478.51	14365221.54	39°33'29.1929"N	80°46'34.5417"W	12364.45	340.878	0.37	-0.36	-0.07	
19230.00	89.880	341.730	6892.30	12458.21	11771.41	-4080.01	1703448.94	14365310.72	39°33'30.0754"N	80°46'34.9166"W	12458.44	340.884	0.19	0.11	0.16	
19325.00	89.630	341.690	6892.70	12553.21	11861.61	-4109.83	1703419.13	14365400.89	39°33'30.9676"N	80°46'35.2944"W	12553.43	340.890	0.27	-0.26	-0.04	
19419.00	89.720	341.670	6893.24	12647.20	11950.85	-4139.37	1703389.60	14365490.08	39°33'31.8502"N	80°46'35.6688"W	12647.42	340.896	0.10	0.10	-0.02	
19514.00	89.780	341.570	6893.65	12742.20	12041.00	-4169.33	1703359.66	14365580.20	39°33'32.7420"N	80°46'36.0484"W	12742.41	340.901	0.12	0.06	-0.11	
19608.00	89.630	341.680	6894.14	12836.19	12130.21	-4198.96	1703330.04	14365669.37	39°33'33.6243"N	80°46'36.4239"W	12836.40	340.906	0.20	-0.16	0.12	
19703.00	89.200	341.650	6895.11	12931.19	12220.38	-4228.84	1703300.17	14365759.51	39°33'34.5163"N	80°46'36.8026"W	12931.39	340.912	0.45	-0.45	-0.03	
19798.00	89.510	341.630	6896.18	13026.18	12310.54	-4258.76	1703270.26	14365849.63	39°33'35.4081"N	80°46'37.1817"W	13026.37	340.917	0.33	0.33	-0.02	
19893.00	89.290	342.100	6897.17	13121.17	12400.81	-4288.33	1703240.70	14365939.87	39°33'36.3010"N	80°46'37.5564"W	13121.35	340.924	0.55	-0.23	0.49	
19987.00	89.630	341.680	6898.06	13215.16	12490.15	-4317.55	1703211.49	14366029.17	39°33'37.1847"N	80°46'37.9266"W	13215.34	340.931	0.57	0.36	-0.45	
20082.00	89.630	342.270	6898.67	13310.15	12580.49	-4346.94	1703182.11	14366119.47	39°33'38.0782"N	80°46'38.2991"W	13310.32	340.938	0.62	0.00	0.62	
20176.00	90.310	343.060	6898.72	13404.11	12670.22	-4374.95	1703154.11	14366209.17	39°33'38.9657"N	80°46'38.6538"W	13404.27	340.951	1.11	0.72	0.84	
20271.00	89.630	343.410	6898.77	13499.06	12761.18	-4402.35	1703126.72	14366300.09	39°33'39.8654"N	80°46'39.0008"W	13499.20	340.967	0.81	-0.72	0.37	
20365.00	89.420	341.990	6899.55	13593.02	12850.92	-4430.31	1703098.78	14366389.80	39°33'40.7530"N	80°46'39.3549"W	13593.15	340.979	1.53	-0.22	-1.51	
20460.00	89.290	341.820	6900.62	13688.01	12941.22	-4459.81	1703069.29	14366480.06	39°33'41.6461"N	80°46'39.7287"W	13688.13	340.985	0.23	-0.14	-0.18	
20554.00	89.230	342.000	6901.83	13781.99	13030.56	-4489.00	1703040.12	14366569.37	39°33'42.5299"N	80°46'40.0986"W	13782.11	340.991	0.20	-0.06	0.19	
20649.00	89.350	341.580	6903.01	13876.98	13120.80	-4518.68	1703010.44	14366659.57	39°33'43.4224"N	80°46'40.4747"W	13877.10	340.997	0.46	0.13	-0.44	
20744.00	89.320	341.680	6904.11	13971.97	13210.95	-4548.62	1702980.52	14366749.69	39°33'44.3141"N	80°46'40.8541"W	13972.08	341.001	0.11	-0.03	0.11	
20838.00	89.570	341.760	6905.02	14065.96	13300.20	-4578.10	1702951.05	14366838.90	39°33'45.1969"N	80°46'41.2278"W	14066.07	341.006	0.28	0.27	0.09	
20933.00	89.290	341.920	6905.97	14160.95	13390.46	-4607.71	1702921.45	14366929.13	39°33'46.0898"N	80°46'41.6030"W	14161.06	341.011	0.34	-0.29	0.17	
21027.00	89.290	341.660	6907.13	14254.94	13479.75	-4637.08	1702892.09	14367018.38	39°33'46.9729"N	80°46'41.9752"W	14255.04	341.017	0.28	0.00	-0.28	
21121.00	89.320	341.660	6908.27	14348.93	13568.97	-4666.66	1702862.53	14367107.56	39°33'47.8554"N	80°46'42.3500"W	14349.03	341.021	0.03	0.03	0.00	
21216.00	89.230	341.870	6909.47	14443.92	13659.19	-4696.38	1702832.81	14367197.75	39°33'48.7478"N	80°46'42.7267"W	14444.01	341.026	0.24	-0.09	0.22	
21310.00	89.660	342.510	6910.38	14537.90	13748.68	-4725.13	1702804.07	14367287.20	39°33'49.6329"N	80°46'43.0910"W	14537.99	341.033	0.82	0.46	0.68	
21405.00	89.780	341.500	6910.85	14632.89	13839.03	-4754.48	1702774.74	14367377.52	39°33'50.5266"N	80°46'43.4629"W	14632.97	341.040	1.07	0.13	-1.06	
21499.00	90.030	341.400	6911.00	14726.89	13928.15	-4784.38	1702744.85	14367466.60	39°33'51.4081"N	80°46'43.8419"W	14726.97	341.042	0.29	0.27	-0.11	

RECEIVED  
 Office of Oil and Gas  
 FEB 24 2023  
 WV Department of Environmental Protection



# Actual Wellpath Report

Baldy Unit 1H AWP Proj: 25744'

Page 10 of 14



REFERENCE WELLPATH IDENTIFICATION				
Operator	ANTERO RESOURCES CORPORATION		Well	Baldy Unit 1H
Field	Wetzel		API	47-103-03478-0000
Facility	Red Lady Pad		Wellbore	Baldy Unit 1H AWP
Slot	Slot C			

WELLPATH DATA (286 stations)																
MD [ft]	Inclination [°]	Azimuth [°]	TVD [ft]	Vert Sect [ft]	North [ft]	East [ft]	Grid East [US ft]	Grid North [US ft]	Latitude	Longitude	Closure Dist [ft]	Closure Dir [°]	DLS [°/100ft]	Build Rate [°/100ft]	Turn Rate [°/100ft]	Comments
21594.00	89.750	341.500	6911.19	14821.89	14018.21	-4814.60	1702714.64	14367556.63	39°33'52.2990"N	80°46'44.2250"W	14821.97	341.045	0.31	-0.29	0.11	
21689.00	90.120	341.800	6911.29	14916.89	14108.38	-4844.51	1702684.74	14367646.76	39°33'53.1908"N	80°46'44.6040"W	14916.96	341.049	0.50	0.39	0.32	
21783.00	90.090	341.650	6911.12	15010.88	14197.64	-4873.99	1702655.28	14367735.99	39°33'54.0737"N	80°46'44.9776"W	15010.95	341.053	0.16	-0.03	-0.16	
21878.00	89.940	341.650	6911.10	15105.88	14287.81	-4903.90	1702625.38	14367826.12	39°33'54.9656"N	80°46'45.3566"W	15105.95	341.057	0.16	-0.16	0.00	
21973.00	90.000	341.450	6911.15	15200.88	14377.93	-4933.96	1702595.33	14367916.20	39°33'55.8570"N	80°46'45.7377"W	15200.95	341.060	0.22	0.06	-0.21	
22067.00	90.220	342.000	6910.97	15294.87	14467.18	-4963.44	1702565.86	14368005.42	39°33'56.7399"N	80°46'46.1113"W	15294.94	341.064	0.63	0.23	0.59	
22162.00	90.710	341.890	6910.20	15389.86	14557.50	-4992.88	1702536.43	14368095.71	39°33'57.6332"N	80°46'46.4844"W	15389.92	341.069	0.53	0.52	-0.12	
22256.00	90.310	342.010	6909.36	15483.85	14646.87	-5022.01	1702507.32	14368185.04	39°33'58.5172"N	80°46'46.8535"W	15483.91	341.075	0.44	-0.43	0.13	
22351.00	90.000	341.750	6909.10	15578.85	14737.16	-5051.55	1702477.78	14368275.29	39°33'59.4102"N	80°46'47.2279"W	15578.90	341.079	0.43	-0.33	-0.27	
22445.00	90.520	342.400	6908.68	15672.83	14826.60	-5080.48	1702448.87	14368364.69	39°34'0.2949"N	80°46'47.5946"W	15672.88	341.085	0.89	0.56	0.69	
22540.00	89.940	341.830	6908.29	15767.82	14917.00	-5109.66	1702419.70	14368455.06	39°34'1.1891"N	80°46'47.9643"W	15767.87	341.092	0.86	-0.61	-0.60	
22634.00	89.540	341.660	6908.72	15861.82	15006.27	-5139.10	1702390.27	14368544.30	39°34'2.0720"N	80°46'48.3375"W	15861.86	341.096	0.46	-0.43	-0.18	
22729.00	90.400	341.960	6908.77	15956.81	15096.52	-5168.76	1702360.63	14368634.51	39°34'2.9647"N	80°46'48.7133"W	15956.85	341.100	0.96	0.91	0.32	
22824.00	90.680	342.040	6907.87	16051.80	15186.87	-5198.11	1702331.28	14368724.82	39°34'3.8584"N	80°46'49.0853"W	16051.83	341.105	0.31	0.29	0.08	
22918.00	90.770	341.350	6906.89	16145.79	15276.11	-5227.63	1702301.77	14368814.02	39°34'4.7410"N	80°46'49.4595"W	16145.82	341.109	0.74	0.10	-0.73	
23012.00	90.950	341.410	6905.27	16239.77	15365.18	-5257.64	1702271.77	14368903.06	39°34'5.6220"N	80°46'49.8399"W	16239.81	341.110	0.20	0.19	0.06	
23107.00	90.550	340.970	6904.03	16334.77	15455.09	-5288.27	1702241.16	14368992.94	39°34'6.5114"N	80°46'50.2282"W	16334.80	341.111	0.63	-0.42	-0.46	
23201.00	90.860	341.510	6902.87	16428.76	15544.09	-5318.50	1702210.94	14369081.90	39°34'7.3918"N	80°46'50.6114"W	16428.79	341.111	0.66	0.33	0.57	
23296.00	91.200	341.980	6901.17	16523.74	15634.30	-5348.25	1702181.20	14369172.07	39°34'8.2840"N	80°46'50.9886"W	16523.77	341.115	0.61	0.36	0.49	
23390.00	90.740	341.640	6899.58	16617.72	15723.59	-5377.59	1702151.87	14369261.33	39°34'9.1672"N	80°46'51.3604"W	16617.75	341.119	0.61	-0.49	-0.36	
23484.00	90.830	341.410	6898.29	16711.71	15812.73	-5407.38	1702122.10	14369350.44	39°34'10.0489"N	80°46'51.7380"W	16711.74	341.121	0.26	0.10	-0.24	
23578.00	90.090	341.700	6897.53	16805.70	15901.90	-5437.12	1702092.37	14369439.57	39°34'10.9309"N	80°46'52.1150"W	16805.73	341.124	0.85	-0.79	0.31	
23673.00	90.180	341.370	6897.31	16900.70	15992.01	-5467.21	1702062.29	14369529.64	39°34'11.8222"N	80°46'52.4964"W	16900.73	341.126	0.36	0.09	-0.35	
23767.00	90.250	341.670	6896.96	16994.70	16081.16	-5497.00	1702032.51	14369618.76	39°34'12.7040"N	80°46'52.8741"W	16994.73	341.128	0.33	0.07	0.32	
23862.00	90.090	341.300	6896.67	17089.70	16171.24	-5527.17	1702002.36	14369708.81	39°34'13.5951"N	80°46'53.2566"W	17089.73	341.130	0.42	-0.17	-0.39	
23956.00	90.400	340.960	6896.27	17183.70	16260.19	-5557.57	1701971.97	14369797.72	39°34'14.4749"N	80°46'53.6420"W	17183.72	341.130	0.49	0.33	-0.36	
24051.00	90.150	340.770	6895.82	17278.69	16349.94	-5588.71	1701940.84	14369887.43	39°34'15.3626"N	80°46'54.0369"W	17278.72	341.129	0.33	-0.26	-0.20	
24145.00	90.310	340.600	6895.44	17372.69	16438.65	-5619.80	1701909.76	14369976.11	39°34'16.2401"N	80°46'54.4312"W	17372.72	341.126	0.25	0.17	-0.18	
24240.00	90.400	341.440	6894.85	17467.69	16528.48	-5650.70	1701878.88	14370065.90	39°34'17.1287"N	80°46'54.8229"W	17467.72	341.126	0.89	0.09	0.88	
24335.00	90.180	340.820	6894.37	17562.68	16618.37	-5681.42	1701848.16	14370155.76	39°34'18.0178"N	80°46'55.2125"W	17562.71	341.126	0.69	-0.23	-0.65	

RECEIVED  
Office of Oil and Gas  
FEB 24 2023  
WV Department of  
Environmental Protection



# Actual Wellpath Report

Baldy Unit 1H AWP Proj: 25744'

Page 11 of 14



REFERENCE WELLPATH IDENTIFICATION				
Operator	ANTERO RESOURCES CORPORATION		Well	Baldy Unit 1H
Field	Wetzel		API	47-103-03478-0000
Facility	Red Lady Pad		Wellbore	Baldy Unit 1H AWB
Slot	Slot C			

WELLPATH DATA (286 stations) † = interpolated, ‡ = extrapolated station																
MD [ft]	Inclination [°]	Azimuth [°]	TVD [ft]	Vert Sect [ft]	North [ft]	East [ft]	Grid East [US ft]	Grid North [US ft]	Latitude	Longitude	Closure Dist [ft]	Closure Dir [°]	DLS ["/100ft]	Build Rate ["/100ft]	Turn Rate ["/100ft]	Comments
24429.00	90.370	340.680	6893.92	17656.68	16707.12	-5712.41	1701817.18	14370244.47	39°34'18.8957"N	80°46'55.6055"W	17656.71	341.124	0.25	0.20	-0.15	
24524.00	90.250	340.890	6893.40	17751.68	16796.82	-5743.68	1701785.93	14370334.14	39°34'19.7830"N	80°46'56.0020"W	17751.71	341.122	0.25	-0.13	0.22	
24619.00	90.310	340.960	6892.94	17846.67	16886.61	-5774.72	1701754.90	14370423.88	39°34'20.6711"N	80°46'56.3956"W	17846.71	341.121	0.10	0.06	0.07	
24713.00	90.550	340.680	6892.23	17940.67	16975.39	-5805.61	1701724.03	14370512.63	39°34'21.5492"N	80°46'56.7873"W	17940.70	341.119	0.39	0.26	-0.30	
24808.00	90.000	340.410	6891.78	18035.66	17064.96	-5837.25	1701692.40	14370602.17	39°34'22.4353"N	80°46'57.1885"W	18035.70	341.116	0.64	-0.58	-0.28	
24902.00	90.280	340.600	6891.55	18129.65	17153.57	-5868.62	1701661.04	14370690.74	39°34'23.3118"N	80°46'57.5864"W	18129.69	341.113	0.36	0.30	0.20	
24997.00	90.220	340.500	6891.13	18224.64	17243.15	-5900.25	1701629.42	14370780.29	39°34'24.1979"N	80°46'57.9876"W	18224.68	341.110	0.12	-0.06	-0.11	
25091.00	90.090	340.730	6890.88	18318.64	17331.82	-5931.45	1701598.23	14370868.92	39°34'25.0750"N	80°46'58.3833"W	18318.68	341.108	0.28	-0.14	0.24	
25186.00	90.250	340.470	6890.60	18413.63	17421.42	-5963.00	1701566.69	14370958.49	39°34'25.9613"N	80°46'58.7835"W	18413.68	341.105	0.32	0.17	-0.27	
25281.00	90.220	340.770	6890.21	18508.63	17511.04	-5994.53	1701535.18	14371048.07	39°34'26.8477"N	80°46'59.1833"W	18508.67	341.102	0.32	-0.03	0.32	
25375.00	90.280	341.150	6889.80	18602.62	17599.90	-6025.19	1701504.53	14371136.89	39°34'27.7267"N	80°46'59.5722"W	18602.67	341.102	0.41	0.06	0.40	
25470.00	90.250	340.560	6889.36	18697.62	17689.64	-6056.35	1701473.38	14371226.60	39°34'28.6144"N	80°46'59.9673"W	18697.67	341.100	0.62	-0.03	-0.62	
25564.00	90.180	340.770	6889.01	18791.61	17778.34	-6087.47	1701442.27	14371315.26	39°34'29.4917"N	80°47'0.3620"W	18791.66	341.098	0.24	-0.07	0.22	
25659.00	90.280	340.870	6888.63	18886.61	17868.07	-6118.68	1701411.08	14371404.95	39°34'30.3792"N	80°47'0.7578"W	18886.66	341.097	0.15	0.11	0.11	
25719.00	90.280	341.240	6888.33	18946.61	17924.81	-6138.16	1701391.60	14371461.68	39°34'30.9406"N	80°47'1.0048"W	18946.66	341.097	0.62	0.00	0.62	
25744.00‡	90.280	341.240	6888.21	18971.61	17948.49	-6146.20	1701383.57	14371485.34	39°34'31.1747"N	80°47'1.1068"W	18971.66	341.097	0.00	0.00	0.00	Projected MD at TD: 25744'

RECEIVED  
 Office of Oil and Gas  
 FEB 24 2023  
 WV Department of  
 Environmental Protection



# Actual Wellpath Report

Baldy Unit 1H AWP Proj: 25744'

Page 12 of 14



REFERENCE WELLPATH IDENTIFICATION			
Operator	ANTERO RESOURCES CORPORATION	Well	Baldy Unit 1H
Field	Wetzel	API	47-103-03478-0000
Facility	Red Lady Pad	Wellbore	Baldy Unit 1H AWB
Slot	Slot C		

HOLE & CASING SECTIONS - Ref Wellbore: Baldy Unit 1H AWB Ref Wellpath: Baldy Unit 1H AWP Proj: 25744'									
String/Diameter	Start MD [ft]	End MD [ft]	Interval [ft]	Start TVD [ft]	End TVD [ft]	Start N/S [ft]	Start E/W [ft]	End N/S [ft]	End E/W [ft]
20in Conductor	25.50	126.00	100.50	25.50	126.00	0.00	0.00	-0.13	-0.17
17.5in Open Hole	126.00	958.00	832.00	126.00	957.99	-0.13	-0.17	-2.35	-0.62
13.375in Casing Surface	25.50	938.00	912.50	25.50	938.00	0.00	0.00	-2.28	-0.53
12.25in Open Hole	958.00	3432.00	2474.00	957.99	3431.86	-2.35	-0.62	-20.05	-4.32
9.625in Casing Intermediate	25.50	3412.00	3386.50	25.50	3411.86	0.00	0.00	-20.14	-4.23
8.75in Open Hole	3432.00	6049.00	2617.00	3431.86	6041.52	-20.05	-4.32	-124.24	23.40
8.5in Open Hole	6049.00	25744.00	19695.00	6041.52	6888.21	-124.24	23.40	17948.49	-6146.20
5.5in Casing Production	25.50	25724.00	25698.50	25.50	6888.31	0.00	0.00	17929.55	-6139.77

RECEIVED  
 Office of Oil and Gas  
 FEB 24 2023  
 WV Department of  
 Environmental Protection



# Actual Wellpath Report

Baldy Unit 1H AWP Proj: 25744'

Page 13 of 14



## REFERENCE WELLPATH IDENTIFICATION

Operator	ANTERO RESOURCES CORPORATION	Well	Baldy Unit 1H
Field	Wetzel	API	47-103-03478-0000
Facility	Red Lady Pad	Wellbore	Baldy Unit 1H AWB
Slot	Slot C		

## TARGETS

Name	TVD [ft]	North [ft]	East [ft]	Grid East [US ft]	Grid North [US ft]	Latitude	Longitude	Shape
Baldy Unit 1H BHL Rev-3	6754.42	17946.57	-6161.01	1701368.76	14371483.42	39°34'31.1561"N	80°47'1.2960"W	point
Baldy Unit 1H POE Rev-2	6890.00	340.69	-178.46	1707348.94	14353884.53	39°31'37.0038"N	80°45'45.4889"W	point
Baldy Unit 1H LP Rev-2	6915.00	524.30	-240.85	1707286.57	14354068.08	39°31'38.8202"N	80°45'46.2790"W	point
Baldy Unit 1H BHL Rev-2	6931.00	18893.40	-6482.75	1701047.15	14372429.88	39°34'40.5215"N	80°47'5.3758"W	point
Baldy Unit 1H 50' L/R Hard Line Rev-2	7250.00	9143.63	-3169.74	1704358.85	14362683.98	39°33'4.0818"N	80°46'23.3794"W	rectangle
2D Rectangle 18594.6 x 100.								

## WELLPATH COMPOSITION - Ref Wellbore: Baldy Unit 1H AWB Ref Wellpath: Baldy Unit 1H AWP Proj: 25744'

Start MD [ft]	End MD [ft]	Positional Uncertainty Model	Log Name/Comment	Wellbore	Survey Date
25.50	900.00	Gyrodata 2015 - GC+WIR+DPIPE	01 Gyrodata MS Gyro <17-1/2"> (100'-900')	Baldy Unit 1H AWB	5/24/2022
900.00	1106.00	Gyrodata 2015 - GC+WIR+DPIPE	02 Gyrodata MS Gyro <12-1/4"> (900')(1000'-1106')	Baldy Unit 1H AWB	5/27/2022
1106.00	3354.00	BH NaviTrak (2019) (Axial Corr+HRGM)	03 APS EM <12-1/4"> (1106')(1136'-3354')	Baldy Unit 1H AWB	5/24/2022
3354.00	5975.00	BH NaviTrak (2019) (Axial Corr+HRGM)	04 APS EM <8-3/4"> (3354')(3420'-5975')	Baldy Unit 1H AWB	6/29/2022
5975.00	25744.00	BH AutoTrak Curve/eXpress (2019) (HRGM, Short spacing)	05 BH AT Curve <8-1/2"> (5975')(6035'-25719')	Baldy Unit 1H AWB	6/29/2022

RECEIVED  
 Office of Oil and Gas  
 FEB 24 2023  
 WV Department of  
 Environmental Protection



# Actual Wellpath Report

Baldy Unit 1H AWP Proj: 25744'

Page 14 of 14



## REFERENCE WELLPATH IDENTIFICATION

Operator	ANTERO RESOURCES CORPORATION	Well	Baldy Unit 1H
Field	Wetzel	API	47-103-03478-0000
Facility	Red Lady Pad	Wellbore	Baldy Unit 1H AWB
Slot	Slot C		

## COMMENTS

### Wellpath general comments

API: 47-103-03478-0000  
BH Job #: 111354385  
Rig: H&P 317  
Duration: 7/3/2022-7/9/2022  
Gyrodata MS Gyro <17-1/2"> (100'-900')  
Gyrodata MS Gyro <12-1/4"> (900')(1000'-1106')  
APS EM <12-1/4"> (1106')(1136'-3354')  
APS EM <8-3/4"> (3354')(3420'-5975')  
BH AT Curve <8-1/2"> (5975')(6035'-25719')  
Sycamore: 6592' MD  
Middlesex: 6737' MD  
Burkett: 6885' MD  
Tully: 6935' MD  
Hamilton: 7034' MD  
Marcellus POE: 7125' MD  
Projected MD at TD: 25744'

WV Department of  
Environmental Protection

FEB 24 2023

RECEIVED  
Office of Oil and Gas