



# ANTERO RESOURCES CORPORATION



Location: Wetzel County, WV  
Field: Wetzel  
Facility: Red Lady Pad

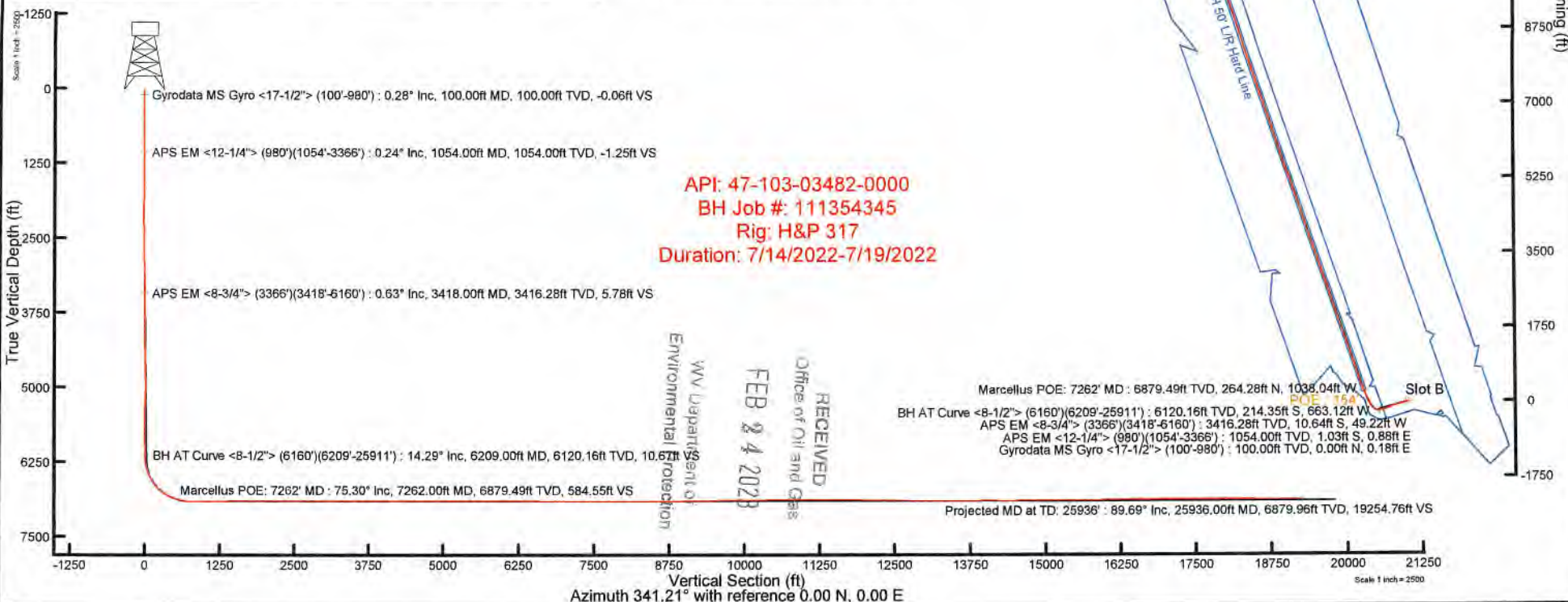
Slot: Slot B  
Well: Cavatica Unit 2H  
Wellbore: Cavatica Unit 2H PWB

Plot reference wellbore is Cavatica Unit 2H PWP Rev-B.0	Grid System: NAD27 / UTM Zone 17 North, US feet
True vertical depths are referenced to H&P 317 (RKB)	North Reference: Grid north
Reference wellbore measured depths are referenced to H&P 317 (RKB)	Scale: True distance
H&P 317 (RKB) to Mean Sea Level: 1232.5 feet	Coordinates are in feet referenced to Slot
Mean Sea Level to Ground level (At Slot: Slot B): -1207 feet	Depths are in feet
Offset wellbore MDs are referenced to each plot's default MD datum	Created by: rebsaynar on 2022-07-21; Database: WA_MPL_EASTERNUS_Data

Location Information					
Facility Name	Grid East (US ft)	Grid North (US ft)	Latitude	Longitude	
Red Lady Pad	1707526.450	14353573.010	39°31'33.9280"N	80°45'43.2459"W	
Slot	Local N (ft)	Local E (ft)	Grid East (US ft)	Grid North (US ft)	Latitude
Slot B	-14.08	0.97	1707526.420	14353559.940	39°31'33.7800"N
Comment: Cavatica Unit 2H					
H&P 317 (RKB) to Ground level (At Slot: Slot B)					25.5ft
Mean Sea Level to Ground level (At Slot: Slot B)					-1207ft
H&P 317 (RKB) to Mean Sea Level					1232.5ft

Well Profile Data								
Design Comment	MD (ft)	Inc. (")	Az (°)	TVD (ft)	Local N (ft)	Local E (ft)	DLS ("/100ft)	VS (ft)
Tie On	3366.00	0.550	331.760	3364.28	-11.03	-48.87	0.59	5.30
Proj. to Bottom	3440.00	0.550	331.760	3438.28	-10.40	-49.20	0.00	6.00
KOP 1	3520.00	0.550	331.760	3518.27	-9.72	-49.56	0.00	6.76
End of 3D Arc	4351.32	16.728	253.336	4337.74	-40.73	-166.89	2.00	15.13
Curve KOP	6307.81	16.728	253.336	6211.43	-202.22	-706.39	0.00	36.09
POE	7243.59	74.617	341.208	6980.00	253.39	-1027.98	8.00	571.00
Landing Pt.	7433.38	90.000	341.208	6905.00	430.97	-1089.40	8.00	758.57
BHL	26470.21	90.000	341.208	6905.00	18453.00	-7220.88	0.00	19795.41

Well Data			
Slot	Well	Wellbore	Wellpath
Slot B	Cavatica Unit 2H	Cavatica Unit 2H AWB	Cavatica Unit 2H AWP Proj: 25936
Slot B	Cavatica Unit 2H	Cavatica Unit 2H PWB	Cavatica Unit 2H PWP Rev-B.0





# Actual Wellpath Report

Cavatica Unit 2H AWP Proj: 25936'  
Page 1 of 14



REFERENCE WELLPATH IDENTIFICATION			
Operator	ANTERO RESOURCES CORPORATION	Well	Cavatica Unit 2H
Field	Wetzel	API	47-103-03482-0000
Facility	Red Lady Pad	Wellbore	Cavatica Unit 2H AWB
Slot	Slot B		

REPORT SETUP INFORMATION			
Projection System	NAD27 / UTM Zone 17 North, US feet	Software System	WellArchitect® 6.0
North Reference	Grid	User	Edsaryar
Scale	0.999605	Report Generated	7/21/2022 at 5:46:17 PM
Convergence at slot	0.15° East	Database	WA_MPL_EASTERNUS_Defn

WELLPATH LOCATION						
	Local coordinates		Grid coordinates		Geographic coordinates	
	North[ft]	East[ft]	Easting[US ft]	Northing[US ft]	Latitude	Longitude
Slot Location	-14.98	0.97	1707526.42	14353558.94	39°31'33.7800"N	80°45'43.2341"W
Facility Reference Pt			1707525.45	14353573.91	39°31'33.9280"N	80°45'43.2459"W
Field Reference Pt			0.00	0.00	0°00'0.0000"	85°29'19.3013"W

WELLPATH DATUM			
Calculation method	Minimum curvature	H&P 317 (RKB) to Facility Vertical Datum	1232.50ft
Horizontal Reference Pt	Slot	H&P 317 (RKB) to Mean Sea Level	1232.50ft
Vertical Reference Pt	H&P 317 (RKB)	H&P 317 (RKB) to Ground Level at Slot (Slot B)	25.50ft
MD Reference Pt	H&P 317 (RKB)	Section Origin	N 0.00, E 0.00 ft
Field Vertical Reference	Mean Sea Level	Section Azimuth	341.21°

RECEIVED  
 Office of Oil and Gas  
 FEB 24 2023  
 WV Department of  
 Environmental Protection



# Actual Wellpath Report

Cavatica Unit 2H AWP Proj: 25936'  
Page 2 of 14



REFERENCE WELLPATH IDENTIFICATION			
Operator	ANTERO RESOURCES CORPORATION	Well	Cavatica Unit 2H
Field	Wetzel	API	47-103-03482-0000
Facility	Red Lady Pad	Wellbore	Cavatica Unit 2H AWB
Slot	Slot B		

WELLPATH DATA (285 stations) † = interpolated, ‡ = extrapolated station																
MD [ft]	Inclination [°]	Azimuth [°]	TVD [ft]	Vert Sect [ft]	North [ft]	East [ft]	Grid East [US ft]	Grid North [US ft]	Latitude	Longitude	Closure Dist [ft]	Closure Dir [°]	DLS ["/100ft]	Build Rate ["/100ft]	Turn Rate ["/100ft]	Comments
0.00†	0.000	90.630	0.00	0.00	0.00	0.00	1707526.42	14353558.94	39°31'33.7800"N	80°45'43.2341"W	0.00	0.000	0.00	0.00	0.00	
25.50	0.000	90.630	25.50	0.00	0.00	0.00	1707526.42	14353558.94	39°31'33.7800"N	80°45'43.2341"W	0.00	0.000	0.00	0.00	0.00	
100.00	0.280	90.630	100.00	-0.06	0.00	0.18	1707526.60	14353558.94	39°31'33.7800"N	80°45'43.2317"W	0.18	90.630	0.38	0.38	0.00	Gyrodata MS Gyro <17-1/2"> (100'-980')
200.00	0.100	65.340	200.00	-0.13	0.03	0.51	1707526.93	14353558.97	39°31'33.7803"N	80°45'43.2276"W	0.51	86.410	0.19	-0.18	-25.29	
300.00	0.150	102.210	300.00	-0.19	0.04	0.71	1707527.13	14353558.98	39°31'33.7804"N	80°45'43.2250"W	0.71	86.753	0.09	0.09	36.87	
400.00	0.170	101.700	400.00	-0.33	-0.02	0.99	1707527.41	14353558.92	39°31'33.7798"N	80°45'43.2215"W	0.99	91.006	0.02	0.02	-0.51	
500.00	0.140	118.850	500.00	-0.50	-0.11	1.24	1707527.66	14353558.83	39°31'33.7789"N	80°45'43.2183"W	1.24	94.909	0.05	-0.03	17.15	
600.00	0.170	123.670	600.00	-0.71	-0.25	1.47	1707527.89	14353558.69	39°31'33.7775"N	80°45'43.2153"W	1.49	99.566	0.03	0.03	4.82	
700.00	0.200	167.430	700.00	-1.00	-0.50	1.63	1707528.05	14353558.44	39°31'33.7750"N	80°45'43.2133"W	1.71	107.055	0.14	0.03	43.76	
800.00	0.230	195.390	800.00	-1.34	-0.86	1.62	1707528.03	14353558.08	39°31'33.7714"N	80°45'43.2135"W	1.83	118.146	0.11	0.03	27.96	
900.00	0.160	289.960	900.00	-1.42	-1.01	1.43	1707527.85	14353557.93	39°31'33.7700"N	80°45'43.2158"W	1.75	125.220	0.29	-0.07	94.57	
980.00	0.230	272.530	980.00	-1.29	-0.96	1.17	1707527.58	14353557.98	39°31'33.7704"N	80°45'43.2192"W	1.51	129.622	0.11	0.09	-21.79	
1054.00	0.240	243.780	1054.00	-1.25	-1.03	0.88	1707527.30	14353557.91	39°31'33.7698"N	80°45'43.2229"W	1.35	139.470	0.16	0.01	-38.85	APS EM <12-1/4"> (980')(1054'-3366')
1149.00	1.980	259.020	1148.97	-1.06	-1.43	-0.91	1707525.51	14353567.51	39°31'33.7659"N	80°45'43.2457"W	1.69	212.582	1.84	1.83	16.04	
1243.00	3.510	255.860	1242.86	-0.80	-2.44	-5.30	1707521.13	14353556.50	39°31'33.7560"N	80°45'43.3017"W	5.83	245.272	1.63	1.63	-3.36	
1337.00	5.020	252.370	1336.60	-0.29	-4.39	-12.01	1707514.42	14353554.55	39°31'33.7369"N	80°45'43.3874"W	12.78	249.925	1.63	1.61	-3.71	
1431.00	5.250	247.870	1430.22	-0.45	-7.25	-19.91	1707506.52	14353551.69	39°31'33.7088"N	80°45'43.4884"W	21.19	249.982	0.49	0.24	-4.79	
1525.00	4.990	245.830	1523.85	-1.09	-10.55	-27.62	1707498.81	14353548.40	39°31'33.6765"N	80°45'43.5869"W	29.57	249.101	0.34	-0.28	-2.17	
1620.00	3.480	237.550	1618.59	-2.16	-13.79	-33.83	1707492.61	14353545.16	39°31'33.6446"N	80°45'43.6662"W	36.53	247.826	1.71	-1.59	-8.72	
1714.00	2.180	220.970	1712.47	-3.73	-16.67	-37.41	1707489.03	14353542.28	39°31'33.6162"N	80°45'43.7120"W	40.95	245.983	1.62	-1.38	-17.64	
1808.00	1.450	196.530	1806.43	-5.60	-19.16	-38.92	1707487.52	14353539.79	39°31'33.5917"N	80°45'43.7313"W	43.38	243.791	1.12	-0.78	-26.00	
1902.00	0.370	161.380	1900.41	-6.88	-20.59	-39.16	1707487.28	14353538.36	39°31'33.5775"N	80°45'43.7345"W	44.24	242.269	1.24	-1.15	-37.39	
1996.00	0.700	122.450	1994.41	-7.63	-21.18	-38.58	1707487.86	14353537.77	39°31'33.5716"N	80°45'43.7271"W	44.01	241.231	0.50	0.35	-41.41	
2090.00	0.610	154.870	2088.40	-8.57	-21.94	-37.88	1707488.55	14353537.01	39°31'33.5641"N	80°45'43.7182"W	43.78	239.918	0.40	-0.10	34.49	
2185.00	0.780	331.320	2183.40	-8.44	-21.83	-37.98	1707488.46	14353537.12	39°31'33.5652"N	80°45'43.7194"W	43.80	240.105	1.46	0.18	185.74	
2279.00	1.220	320.970	2277.39	-6.87	-20.49	-38.91	1707487.52	14353538.45	39°31'33.5784"N	80°45'43.7313"W	43.98	242.226	0.50	0.47	-11.01	
2374.00	1.050	317.230	2372.37	-5.12	-19.07	-40.14	1707486.29	14353539.88	39°31'33.5926"N	80°45'43.7470"W	44.44	244.589	0.20	-0.18	-3.94	
2468.00	0.870	323.930	2466.35	-3.66	-17.86	-41.15	1707485.29	14353541.09	39°31'33.6045"N	80°45'43.7597"W	44.86	246.536	0.23	-0.19	7.13	
2562.00	0.660	312.990	2560.35	-2.50	-16.91	-41.96	1707484.47	14353542.03	39°31'33.6139"N	80°45'43.7701"W	45.24	248.046	0.27	-0.22	-11.64	
2656.00	0.970	314.280	2654.34	-1.31	-15.99	-42.93	1707483.51	14353542.96	39°31'33.6231"N	80°45'43.7824"W	45.81	249.571	0.33	0.33	1.37	

RECEIVED  
Office of Oil and Gas  
FEB 24 2023  
Environmental Protection  
Environmental Protection



# Actual Wellpath Report

Cavatica Unit 2H AWP Proj: 25936'  
Page 3 of 14



REFERENCE WELLPATH IDENTIFICATION			
Operator	ANTERO RESOURCES CORPORATION	Well	Cavatica Unit 2H
Field	Wetzel	API	47-103-03482-0000
Facility	Red Lady Pad	Wellbore	Cavatica Unit 2H AWB
Slot	Slot B		

WELLPATH DATA (285 stations)																
MD [ft]	Inclination [°]	Azimuth [°]	TVD [ft]	Vert Sect [ft]	North [ft]	East [ft]	Grid East [US ft]	Grid North [US ft]	Latitude	Longitude	Closure Dist [ft]	Closure Dir [°]	DLS ["/100ft]	Build Rate ["/100ft]	Turn Rate ["/100ft]	Comments
2750.00	0.930	318.820	2748.32	0.10	-14.86	-44.00	1707482.44	14353544.09	39°31'33.6343"N	80°45'43.7961"W	46.44	251.339	0.09	-0.04	4.83	
2845.00	0.880	277.990	2843.31	1.15	-14.18	-45.23	1707481.21	14353544.77	39°31'33.6410"N	80°45'43.8117"W	47.40	252.595	0.67	-0.05	-42.98	
2939.00	1.020	283.000	2937.30	1.91	-13.89	-46.76	1707479.68	14353545.06	39°31'33.6439"N	80°45'43.8313"W	48.78	253.456	0.17	0.15	5.33	
3033.00	0.210	2.920	3031.29	2.51	-13.53	-47.57	1707478.87	14353545.42	39°31'33.6475"N	80°45'43.8415"W	49.45	254.122	1.07	-0.86	85.02	
3127.00	0.570	345.490	3125.29	3.14	-12.90	-47.67	1707478.76	14353546.04	39°31'33.6537"N	80°45'43.8429"W	49.39	254.854	0.40	0.38	-18.54	
3221.00	0.640	333.350	3219.29	4.13	-11.98	-48.03	1707478.41	14353546.96	39°31'33.6628"N	80°45'43.8474"W	49.50	255.990	0.15	0.07	-12.91	
3316.00	0.440	299.130	3314.28	4.92	-11.33	-48.58	1707477.86	14353547.61	39°31'33.6693"N	80°45'43.8544"W	49.89	256.871	0.39	-0.21	-36.02	
3366.00	0.550	331.760	3364.28	5.30	-11.03	-48.87	1707477.57	14353547.92	39°31'33.6723"N	80°45'43.8580"W	50.09	257.284	0.59	0.22	65.26	
3418.00	0.630	304.870	3416.28	5.78	-10.64	-49.22	1707477.22	14353548.30	39°31'33.6761"N	80°45'43.8625"W	50.36	257.798	0.55	0.15	-51.71	APS EM <8-3/4"> (3366')(3418'-6160')
3512.00	2.360	248.890	3510.25	6.12	-11.04	-51.45	1707474.99	14353547.90	39°31'33.6722"N	80°45'43.8910"W	52.62	257.884	2.21	1.84	-59.55	
3607.00	4.480	233.840	3605.07	4.93	-13.94	-56.27	1707470.17	14353545.01	39°31'33.6437"N	80°45'43.9526"W	57.97	256.087	2.40	2.23	-15.84	
3701.00	4.930	251.440	3698.76	3.85	-17.39	-63.06	1707463.38	14353541.56	39°31'33.6097"N	80°45'44.0394"W	65.42	254.583	1.60	0.48	18.72	
3796.00	5.010	249.640	3793.40	3.75	-20.13	-70.82	1707455.63	14353538.81	39°31'33.5828"N	80°45'44.1385"W	73.63	254.130	0.18	0.08	-1.89	
3890.00	7.030	248.590	3886.88	3.38	-23.66	-80.03	1707446.43	14353535.29	39°31'33.5482"N	80°45'44.2561"W	83.45	253.528	2.15	2.15	-1.12	
3985.00	9.230	256.460	3980.92	3.81	-27.57	-92.85	1707433.61	14353531.38	39°31'33.5099"N	80°45'44.4198"W	96.85	253.463	2.59	2.32	8.28	
4080.00	12.180	257.290	4074.26	5.57	-31.56	-110.03	1707416.43	14353527.39	39°31'33.4710"N	80°45'44.6393"W	114.47	253.997	3.11	3.11	0.87	
4174.00	11.670	254.980	4166.23	7.24	-36.20	-128.89	1707397.58	14353522.75	39°31'33.4255"N	80°45'44.8801"W	133.88	254.311	0.74	-0.54	-2.46	
4269.00	12.370	255.300	4259.15	8.60	-41.28	-148.01	1707378.47	14353517.68	39°31'33.3759"N	80°45'45.1243"W	153.66	254.418	0.74	0.74	0.34	
4363.00	13.400	254.810	4350.78	10.00	-46.68	-168.26	1707358.22	14353512.27	39°31'33.3230"N	80°45'45.3829"W	174.82	254.493	1.10	1.10	-0.52	
4458.00	14.890	253.890	4442.90	11.26	-52.96	-190.61	1707335.88	14353506.00	39°31'33.2616"N	80°45'45.6684"W	197.83	254.474	1.59	1.57	-0.97	
4552.00	16.090	254.840	4533.48	12.65	-59.71	-214.79	1707311.71	14353499.25	39°31'33.1954"N	80°45'45.9771"W	222.94	254.463	1.30	1.28	1.01	
4647.00	14.270	252.890	4625.16	13.83	-66.60	-238.69	1707287.83	14353492.36	39°31'33.1280"N	80°45'46.2823"W	247.81	254.409	1.99	-1.92	-2.05	
4742.00	13.660	256.530	4717.36	15.21	-72.66	-260.79	1707265.73	14353486.31	39°31'33.0687"N	80°45'46.5646"W	270.72	254.431	1.13	-0.64	3.83	
4836.00	13.940	256.740	4808.64	17.33	-77.84	-282.60	1707243.93	14353481.13	39°31'33.0180"N	80°45'46.8431"W	293.13	254.600	0.30	0.30	0.22	
4931.00	16.440	252.790	4900.32	18.81	-84.45	-306.59	1707219.95	14353474.53	39°31'32.9534"N	80°45'47.1494"W	318.00	254.600	2.85	2.63	-4.16	
5025.00	18.010	250.740	4990.10	19.05	-93.18	-333.01	1707193.54	14353465.80	39°31'32.8678"N	80°45'47.4869"W	345.80	254.369	1.79	1.67	-2.18	
5120.00	15.840	246.650	5080.98	17.90	-103.16	-358.79	1707167.78	14353455.82	39°31'32.7698"N	80°45'47.8161"W	373.32	253.959	2.60	-2.28	-4.31	
5215.00	15.500	245.000	5172.45	15.50	-113.66	-382.19	1707144.38	14353445.32	39°31'32.6666"N	80°45'48.1152"W	398.74	253.438	0.59	-0.36	-1.74	
5310.00	17.360	243.040	5263.57	12.11	-125.45	-406.33	1707120.25	14353433.54	39°31'32.5507"N	80°45'48.4237"W	425.26	252.842	2.04	1.96	-2.06	
5404.00	18.300	245.190	5353.06	8.57	-138.01	-432.23	1707094.36	14353420.99	39°31'32.4273"N	80°45'48.7546"W	453.73	252.292	1.22	1.00	2.29	

RECEIVED  
 Office of Oil and Gas  
 FEB 24 2023  
 Environmental Protection  
 WV Department of



# Actual Wellpath Report

Cavatica Unit 2H AWP Proj: 25936'  
Page 4 of 14



REFERENCE WELLPATH IDENTIFICATION				
Operator	ANTERO RESOURCES CORPORATION		Well	Cavatica Unit 2H
Field	Wetzel		API	47-103-03482-0000
Facility	Red Lady Pad		Wellbore	Cavatica Unit 2H AWB
Slot	Slot B			

**WELLPATH DATA (285 stations)** † = interpolated, ‡ = extrapolated station

MD [ft]	Inclination [°]	Azimuth [°]	TVD [ft]	Vert Sect [ft]	North [ft]	East [ft]	Grid East [US ft]	Grid North [US ft]	Latitude	Longitude	Closure Dist [ft]	Closure Dir [°]	DLS ["/100ft]	Build Rate ["/100ft]	Turn Rate ["/100ft]	Comments
5498.00	18.340	247.840	5442.29	6.15	-149.78	-459.32	1707067.28	14353409.22	39°31'32.3117"N	80°45'49.1007"W	483.12	251.940	0.89	0.04	2.82	
5592.00	17.940	253.080	5531.63	5.76	-159.57	-486.87	1707039.74	14353399.43	39°31'32.2156"N	80°45'49.4528"W	512.35	251.854	1.79	-0.43	5.57	
5687.00	19.160	251.340	5621.69	6.27	-168.82	-515.64	1707010.99	14353390.19	39°31'32.1249"N	80°45'49.8200"W	542.57	251.872	1.41	1.28	-1.83	
5782.00	19.680	252.570	5711.29	6.68	-178.59	-545.67	1706980.96	14353380.42	39°31'32.0291"N	80°45'50.2036"W	574.15	251.877	0.70	0.55	1.29	
5877.00	16.960	253.370	5801.46	7.59	-187.35	-574.22	1706952.43	14353371.68	39°31'31.9432"N	80°45'50.5682"W	604.01	251.930	2.88	-2.86	0.84	
5971.00	16.960	254.700	5891.37	8.94	-194.90	-600.58	1706926.08	14353364.12	39°31'31.8694"N	80°45'50.9048"W	631.41	252.021	0.41	0.00	1.41	
6065.00	16.530	252.820	5981.39	10.15	-202.46	-626.58	1706900.09	14353356.56	39°31'31.7953"N	80°45'51.2369"W	658.48	252.093	0.74	-0.46	-2.00	
6160.00	15.190	251.480	6072.77	10.59	-210.41	-651.29	1706875.39	14353348.62	39°31'31.7174"N	80°45'51.5525"W	684.44	252.096	1.46	-1.41	-1.41	
6209.00	14.290	251.700	6120.16	10.87	-214.35	-663.12	1706863.56	14353344.68	39°31'31.6788"N	80°45'51.7036"W	696.90	252.087	1.84	-1.84	0.45	BH AT Curve <8-1/2"> (6160')(6209'-25911')
6270.00	15.950	262.250	6179.06	12.34	-217.84	-678.58	1706848.11	14353341.19	39°31'31.6446"N	80°45'51.9010"W	712.69	252.202	5.26	2.72	17.30	
6365.00	18.820	280.110	6269.77	22.25	-216.91	-706.62	1706820.08	14353342.12	39°31'31.6546"N	80°45'52.2588"W	739.16	252.935	6.34	3.02	18.80	
6459.00	22.580	296.070	6357.76	42.33	-206.31	-737.79	1706788.92	14353352.72	39°31'31.7602"N	80°45'52.6563"W	766.10	254.378	7.18	4.00	16.98	
6554.00	26.700	306.390	6444.13	72.75	-185.61	-771.39	1706755.34	14353373.40	39°31'31.9656"N	80°45'53.0843"W	793.40	256.471	6.26	4.34	10.86	
6649.00	32.130	315.300	6526.89	113.04	-154.95	-806.38	1706720.36	14353404.05	39°31'32.2695"N	80°45'53.5298"W	821.13	259.123	7.33	5.72	9.38	
6694.00†	34.802	319.127	6564.43	135.71	-136.73	-823.21	1706703.54	14353422.26	39°31'32.4500"N	80°45'53.7439"W	834.49	260.589	7.56	5.94	8.50	Sycamore: 6694' MD
6743.00	37.830	322.740	6603.91	162.93	-114.19	-841.46	1706685.29	14353444.79	39°31'32.6732"N	80°45'53.9761"W	849.17	262.272	7.56	6.18	7.37	
6838.00	43.200	327.570	6676.13	222.22	-63.51	-876.57	1706650.20	14353495.46	39°31'33.1750"N	80°45'54.4225"W	878.87	265.858	6.54	5.65	5.08	
6849.00†	44.225	328.191	6684.08	229.62	-57.07	-880.61	1706646.16	14353501.89	39°31'33.2388"N	80°45'54.4739"W	882.46	266.292	10.10	9.32	5.65	Middlesex: 6849' MD
6932.00	52.050	332.250	6739.44	290.25	-3.42	-911.16	1706615.62	14353555.52	39°31'33.7899"N	80°45'54.8619"W	911.17	269.785	10.10	9.43	4.89	
7009.00†	58.646	333.619	6783.20	352.90	52.97	-939.94	1706586.86	14353611.89	39°31'34.3279"N	80°45'55.2273"W	941.43	273.225	8.69	8.57	1.78	Burkett: 7009' MD
7027.00	60.190	333.910	6792.35	368.27	66.87	-946.79	1706580.01	14353625.78	39°31'34.4654"N	80°45'55.3142"W	949.15	274.040	8.69	8.58	1.62	
7066.00†	62.986	334.271	6810.91	402.30	97.72	-961.77	1706565.03	14353656.62	39°31'34.7707"N	80°45'55.5045"W	966.73	275.802	7.21	7.17	0.92	Tully: 7066' MD
7121.00	66.930	334.750	6834.18	451.78	142.69	-983.21	1706543.60	14353701.58	39°31'35.2157"N	80°45'55.7765"W	993.51	278.258	7.21	7.17	0.87	
7174.00†	70.215	335.493	6853.54	500.83	187.45	-1003.96	1706522.86	14353746.31	39°31'35.6586"N	80°45'56.0398"W	1021.31	280.576	6.33	6.20	1.40	Hamilton: 7174' MD
7216.00	72.820	336.060	6866.86	540.48	223.77	-1020.30	1706506.52	14353782.62	39°31'36.0180"N	80°45'56.2472"W	1044.55	282.370	6.33	6.20	1.35	
7262.00†	75.295	336.629	6879.49	584.55	264.28	-1038.04	1706488.79	14353823.12	39°31'36.4188"N	80°45'56.4723"W	1071.16	284.284	5.51	5.38	1.24	Marcellus POE: 7262' MD
7310.00	77.880	337.210	6890.62	631.11	307.23	-1056.35	1706470.49	14353866.05	39°31'36.8438"N	80°45'56.7044"W	1100.12	286.217	5.51	5.38	1.21	
7405.00	86.310	340.530	6903.68	725.03	394.92	-1090.20	1706436.65	14353953.70	39°31'37.7113"N	80°45'57.1336"W	1159.53	289.913	9.52	8.87	3.49	
7499.00	91.450	342.510	6905.52	818.97	484.02	-1119.98	1706406.88	14354042.77	39°31'38.5927"N	80°45'57.5106"W	1220.10	293.373	5.86	5.47	2.11	
7593.00	90.280	340.900	6904.10	912.95	573.26	-1149.48	1706377.39	14354131.97	39°31'39.4754"N	80°45'57.8842"W	1284.50	296.506	2.12	-1.24	-1.71	

RECEIVED  
 Office of Oil and Gas  
 FEB 24 2023  
 WV Department of  
 Environmental Protection



# Actual Wellpath Report

Cavatica Unit 2H AWP Proj: 25936'  
Page 5 of 14



REFERENCE WELLPATH IDENTIFICATION			
Operator	ANTERO RESOURCES CORPORATION	Well	Cavatica Unit 2H
Field	Wetzel	API	47-103-03482-0000
Facility	Red Lady Pad	Wellbore	Cavatica Unit 2H AWB
Slot	Slot B		

WELLPATH DATA (285 stations)																
MD (ft)	Inclination (°)	Azimuth (°)	TVD (ft)	Vert Sect (ft)	North (ft)	East (ft)	Grid East [US ft]	Grid North [US ft]	Latitude	Longitude	Closure Dist (ft)	Closure Dir (°)	DLS (°/100ft)	Build Rate (°/100ft)	Turn Rate (°/100ft)	Comments
7688.00	90.150	340.470	6903.74	1007.95	662.91	-1180.91	1706345.98	14354221.58	39°31'40.3623"N	80°45'58.2822"W	1354.25	299.308	0.47	-0.14	-0.45	
7783.00	90.220	340.340	6903.44	1102.94	752.41	-1212.77	1706314.13	14354311.05	39°31'41.2476"N	80°45'58.6858"W	1427.21	301.816	0.16	0.07	-0.14	
7883.00	90.580	340.700	6902.74	1202.93	846.68	-1246.11	1706280.80	14354405.28	39°31'42.1802"N	80°45'59.1083"W	1506.54	304.194	0.51	0.36	0.36	
7978.00	90.800	340.950	6901.59	1297.92	936.40	-1277.31	1706249.61	14354494.97	39°31'43.0677"N	80°45'59.5035"W	1583.79	306.245	0.35	0.23	0.26	
8072.00	90.370	340.520	6900.63	1391.91	1025.13	-1308.33	1706218.61	14354583.67	39°31'43.9455"N	80°45'59.8963"W	1662.11	308.080	0.65	-0.46	-0.46	
8166.00	90.830	342.170	6899.65	1485.90	1114.19	-1338.39	1706188.56	14354672.68	39°31'44.8264"N	80°46'0.2771"W	1741.47	309.777	1.82	0.49	1.76	
8261.00	90.620	341.150	6898.45	1580.89	1204.35	-1368.28	1706158.68	14354762.81	39°31'45.7183"N	80°46'0.6555"W	1822.82	311.354	1.10	-0.22	-1.07	
8356.00	90.950	340.190	6897.15	1675.88	1293.99	-1399.72	1706127.25	14354852.41	39°31'46.6050"N	80°46'1.0538"W	1906.21	312.752	1.07	0.35	-1.01	
8451.00	90.460	341.260	6895.98	1770.86	1383.65	-1431.08	1706095.91	14354942.04	39°31'47.4920"N	80°46'1.4511"W	1990.60	314.035	1.24	-0.52	1.13	
8545.00	89.750	341.210	6895.81	1864.86	1472.66	-1461.32	1706065.68	14355031.01	39°31'48.3724"N	80°46'1.8340"W	2074.65	315.221	0.76	-0.76	-0.05	
8640.00	89.750	341.230	6896.22	1959.86	1562.60	-1491.90	1706035.11	14355120.92	39°31'49.2621"N	80°46'2.2214"W	2160.44	316.326	0.02	0.00	0.02	
8734.00	89.820	341.320	6896.57	2053.86	1651.62	-1522.08	1706004.95	14355209.91	39°31'50.1427"N	80°46'2.6036"W	2246.01	317.337	0.12	0.07	0.10	
8829.00	89.230	340.760	6897.36	2148.86	1741.46	-1552.94	1705974.09	14355299.71	39°31'51.0315"N	80°46'2.9945"W	2333.31	318.275	0.86	-0.62	-0.59	
8924.00	89.420	340.800	6898.48	2243.85	1831.16	-1584.21	1705942.83	14355389.38	39°31'51.9188"N	80°46'3.3906"W	2421.34	319.136	0.20	0.20	0.04	
9019.00	90.490	341.150	6898.55	2338.85	1920.97	-1615.18	1705911.88	14355479.15	39°31'52.8072"N	80°46'3.7829"W	2509.77	319.942	1.19	1.13	0.37	
9113.00	90.550	342.080	6897.70	2432.84	2010.17	-1644.83	1705882.24	14355568.31	39°31'53.6895"N	80°46'4.1583"W	2597.35	320.708	0.99	0.06	0.99	
9207.00	91.230	341.570	6896.24	2526.82	2099.47	-1674.15	1705852.94	14355657.57	39°31'54.5728"N	80°46'4.5295"W	2685.24	321.431	0.90	0.72	-0.54	
9302.00	90.060	341.740	6895.17	2621.81	2189.63	-1704.04	1705823.05	14355747.70	39°31'55.4647"N	80°46'4.9082"W	2774.57	322.109	1.24	-1.23	0.18	
9396.00	89.820	340.920	6895.27	2715.81	2278.68	-1734.13	1705792.97	14355836.72	39°31'56.3456"N	80°46'5.2893"W	2863.50	322.728	0.91	-0.26	-0.87	
9490.00	90.150	341.000	6895.29	2809.81	2367.54	-1764.80	1705762.32	14355925.54	39°31'57.2246"N	80°46'5.6777"W	2952.93	323.299	0.36	0.35	0.09	
9585.00	90.220	341.370	6894.99	2904.81	2457.46	-1795.44	1705731.69	14356015.43	39°31'58.1141"N	80°46'6.0658"W	3043.47	323.848	0.40	0.07	0.39	
9680.00	90.250	341.560	6894.60	2999.80	2547.54	-1825.64	1705701.51	14356105.47	39°31'59.0050"N	80°46'6.4482"W	3134.15	324.374	0.20	0.03	0.20	
9774.00	90.060	341.800	6894.34	3093.80	2636.77	-1855.18	1705671.97	14356194.67	39°31'59.8877"N	80°46'6.8224"W	3224.01	324.871	0.33	-0.20	0.26	
9869.00	90.030	341.600	6894.27	3188.80	2726.97	-1885.01	1705642.16	14356284.82	39°32'0.7799"N	80°46'7.2002"W	3315.06	325.346	0.21	-0.03	-0.21	
9963.00	89.940	341.030	6894.29	3282.80	2816.01	-1915.13	1705612.05	14356373.83	39°32'1.6607"N	80°46'7.5816"W	3405.53	325.781	0.61	-0.10	-0.61	
10058.00	90.250	341.680	6894.14	3377.80	2906.03	-1945.50	1705581.69	14356463.81	39°32'2.5511"N	80°46'7.9663"W	3497.13	326.199	0.76	0.33	0.68	
10152.00	89.850	341.960	6894.05	3471.79	2995.33	-1974.83	1705552.38	14356553.08	39°32'3.4345"N	80°46'8.3377"W	3587.75	326.603	0.52	-0.43	0.30	
10247.00	89.910	341.120	6894.25	3566.79	3085.44	-2004.91	1705522.31	14356643.16	39°32'4.3259"N	80°46'8.7186"W	3679.62	326.984	0.89	0.06	-0.88	
10341.00	90.060	341.900	6894.28	3660.79	3174.59	-2034.72	1705492.51	14356732.27	39°32'5.2077"N	80°46'9.0962"W	3770.69	327.343	0.84	0.16	0.83	
10436.00	90.310	341.080	6893.97	3755.78	3264.67	-2064.88	1705462.36	14356822.32	39°32'6.0988"N	80°46'9.4782"W	3862.88	327.687	0.90	0.26	-0.86	

RECEIVED  
 Office of Oil and Gas  
 FEB 24 2023  
 WV Department of  
 Environmental Protection



# Actual Wellpath Report

Cavatica Unit 2H AWP Proj: 25936'  
Page 6 of 14



REFERENCE WELLPATH IDENTIFICATION			
Operator	ANTERO RESOURCES CORPORATION	Well	Cavatica Unit 2H
Field	Wetzel	API	47-103-03482-0000
Facility	Red Lady Pad	Wellbore	Cavatica Unit 2H AWB
Slot	Slot B		

WELLPATH DATA (285 stations)																
MD [ft]	Inclination [°]	Azimuth [°]	TVD [ft]	Vert Sect [ft]	North [ft]	East [ft]	Grid East [US ft]	Grid North [US ft]	Latitude	Longitude	Closure Dist [ft]	Closure Dir [°]	DLS [°/100ft]	Build Rate [°/100ft]	Turn Rate [°/100ft]	Comments
10531.00	90.680	341.180	6893.15	3850.78	3354.57	-2095.60	1705431.65	14356912.17	39°32'6.9880"N	80°46'9.8673"W	3955.33	328.007	0.40	0.39	0.11	
10625.00	90.250	341.160	6892.39	3944.78	3443.53	-2125.94	1705401.32	14357001.10	39°32'7.8680"N	80°46'10.2517"W	4046.92	328.310	0.46	-0.46	-0.02	
10720.00	89.110	340.550	6892.92	4039.77	3533.27	-2157.09	1705370.18	14357090.81	39°32'8.7558"N	80°46'10.6464"W	4139.70	328.596	1.36	-1.20	-0.64	
10814.00	89.850	340.970	6893.77	4133.76	3622.02	-2188.07	1705339.22	14357179.52	39°32'9.6336"N	80°46'11.0388"W	4231.63	328.864	0.91	0.79	0.45	
10909.00	89.940	341.060	6893.95	4228.76	3711.85	-2218.97	1705308.33	14357269.32	39°32'10.5223"N	80°46'11.4303"W	4324.54	329.129	0.13	0.09	0.09	
11003.00	90.220	341.300	6893.81	4322.76	3800.83	-2249.30	1705278.02	14357358.26	39°32'11.4024"N	80°46'11.8144"W	4416.52	329.383	0.39	0.30	0.26	
11098.00	90.000	341.560	6893.63	4417.76	3890.88	-2279.55	1705247.77	14357448.28	39°32'12.2932"N	80°46'12.1977"W	4509.47	329.635	0.36	-0.23	0.27	
11192.00	90.310	341.500	6893.38	4511.76	3980.04	-2309.33	1705218.01	14357537.40	39°32'13.1751"N	80°46'12.5748"W	4601.49	329.876	0.34	0.33	-0.06	
11287.00	89.540	341.360	6893.50	4606.76	4070.09	-2339.58	1705187.76	14357627.41	39°32'14.0659"N	80°46'12.9580"W	4694.60	330.109	0.82	-0.81	-0.15	
11382.00	89.820	340.920	6894.03	4701.76	4159.99	-2370.29	1705157.07	14357717.28	39°32'14.9551"N	80°46'13.3471"W	4787.88	330.326	0.55	0.29	-0.46	
11476.00	89.380	341.010	6894.69	4795.75	4248.85	-2400.95	1705126.42	14357806.10	39°32'15.8341"N	80°46'13.7355"W	4880.29	330.530	0.48	-0.47	0.10	
11571.00	90.620	341.750	6894.69	4890.75	4338.87	-2431.28	1705096.10	14357896.09	39°32'16.7246"N	80°46'14.1197"W	4973.62	330.736	1.52	1.31	0.78	
11665.00	89.850	341.340	6894.30	4984.75	4428.03	-2461.04	1705066.36	14357985.22	39°32'17.6066"N	80°46'14.4966"W	5065.98	330.935	0.93	-0.82	-0.44	
11760.00	89.940	341.470	6894.48	5079.75	4518.08	-2491.33	1705036.08	14358075.22	39°32'18.4972"N	80°46'14.8803"W	5159.43	331.127	0.17	0.09	0.14	
11855.00	89.260	340.470	6895.14	5174.74	4607.88	-2522.31	1705005.11	14358164.99	39°32'19.3856"N	80°46'15.2727"W	5253.05	331.304	1.27	-0.72	-1.05	
11949.00	90.120	340.980	6895.65	5268.73	4696.61	-2553.33	1704974.10	14358253.68	39°32'20.2633"N	80°46'15.6659"W	5345.81	331.469	1.06	0.91	0.54	
12043.00	90.030	341.730	6895.53	5362.73	4785.67	-2583.39	1704944.06	14358342.71	39°32'21.1443"N	80°46'16.0466"W	5438.43	331.639	0.80	-0.10	0.80	
12138.00	89.450	341.210	6895.96	5457.73	4875.75	-2613.58	1704913.88	14358432.75	39°32'22.0353"N	80°46'16.4290"W	5532.06	331.807	0.82	-0.61	-0.55	
12233.00	89.780	340.210	6896.60	5552.72	4965.41	-2644.96	1704882.51	14358522.38	39°32'22.9222"N	80°46'16.8267"W	5625.93	331.957	1.11	0.35	-1.05	
12327.00	89.780	341.780	6896.96	5646.72	5054.28	-2675.57	1704851.91	14358611.22	39°32'23.8014"N	80°46'17.2145"W	5718.78	332.105	1.67	0.00	1.67	
12422.00	89.600	341.390	6897.47	5741.72	5144.42	-2705.58	1704821.91	14358701.32	39°32'24.6929"N	80°46'17.5946"W	5812.50	332.259	0.45	-0.19	-0.41	
12517.00	88.680	342.370	6898.90	5836.70	5234.69	-2735.12	1704792.38	14358791.56	39°32'25.5859"N	80°46'17.9688"W	5906.17	332.413	1.41	-0.97	1.03	
12611.00	90.310	341.480	6899.72	5930.68	5324.05	-2764.28	1704763.23	14358880.87	39°32'26.4697"N	80°46'18.3381"W	5998.89	332.561	1.98	1.73	-0.95	
12706.00	90.860	338.450	6898.75	6025.64	5413.28	-2796.82	1704730.71	14358970.07	39°32'27.3525"N	80°46'18.7506"W	6093.10	332.676	3.24	0.58	-3.19	
12800.00	89.510	339.070	6898.45	6119.55	5500.89	-2830.88	1704696.67	14359057.65	39°32'28.2192"N	80°46'19.1824"W	6186.57	332.769	1.58	-1.44	0.66	
12895.00	89.540	341.470	6899.24	6214.53	5590.31	-2862.94	1704664.61	14359147.03	39°32'29.1037"N	80°46'19.5888"W	6280.76	332.882	2.53	0.03	2.53	
12989.00	89.690	341.790	6899.87	6308.53	5679.52	-2892.57	1704635.00	14359236.20	39°32'29.9861"N	80°46'19.9641"W	6373.68	333.010	0.38	0.16	0.34	
13084.00	90.250	341.740	6899.92	6403.52	5769.74	-2922.29	1704605.29	14359326.39	39°32'30.8786"N	80°46'20.3406"W	6467.59	333.138	0.59	0.59	-0.05	
13178.00	89.720	341.990	6899.94	6497.51	5859.07	-2951.55	1704576.04	14359415.69	39°32'31.7622"N	80°46'20.7112"W	6560.52	333.263	0.62	-0.56	0.27	
13273.00	89.510	341.360	6900.58	6592.51	5949.25	-2981.42	1704546.18	14359505.83	39°32'32.6543"N	80°46'21.0895"W	6654.51	333.383	0.70	-0.22	-0.66	

RECEIVED  
Office of Oil and Gas  
FEB 24 2023  
WV Department of  
Environmental Protection



# Actual Wellpath Report

Cavatica Unit 2H AWP Proj: 25936'

Page 7 of 14



REFERENCE WELLPATH IDENTIFICATION				
Operator	ANTERO RESOURCES CORPORATION		Well	Cavatica Unit 2H
Field	Wetzel		API	47-103-03482-0000
Facility	Red Lady Pad		Wellbore	Cavatica Unit 2H AWB
Slot	Slot B			

WELLPATH DATA (285 stations)																
MD [ft]	Inclination [°]	Azimuth [°]	TVD [ft]	Vert Sect [ft]	North [ft]	East [ft]	Grid East [US ft]	Grid North [US ft]	Latitude	Longitude	Closure Dist [ft]	Closure Dir [°]	DLS [°/100ft]	Build Rate [°/100ft]	Turn Rate [°/100ft]	Comments
13368.00	88.980	341.240	6901.83	6687.50	6039.23	-3011.88	1704515.74	14359595.77	39°32'33.5443"N	80°46'21.4754"W	6748.61	333.494	0.57	-0.56	-0.13	
13462.00	89.720	341.650	6902.90	6781.49	6128.34	-3041.79	1704485.84	14359684.85	39°32'34.4257"N	80°46'21.8543"W	6841.71	333.603	0.90	0.79	0.44	
13556.00	90.220	341.560	6902.95	6875.49	6217.53	-3071.45	1704456.19	14359774.01	39°32'35.3080"N	80°46'22.2300"W	6934.81	333.711	0.54	0.53	-0.10	
13651.00	89.780	341.180	6902.95	6970.49	6307.56	-3101.80	1704425.85	14359863.99	39°32'36.1985"N	80°46'22.6145"W	7028.97	333.814	0.61	-0.46	-0.40	
13746.00	90.090	341.600	6903.06	7065.49	6397.59	-3132.11	1704395.55	14359953.99	39°32'37.0890"N	80°46'22.9986"W	7123.15	333.915	0.55	0.33	0.44	
13840.00	89.970	341.480	6903.01	7159.49	6486.75	-3161.88	1704365.80	14360043.12	39°32'37.9710"N	80°46'23.3757"W	7216.33	334.014	0.18	-0.13	-0.13	
13935.00	89.720	341.090	6903.27	7254.49	6576.73	-3192.36	1704335.33	14360133.06	39°32'38.8610"N	80°46'23.7619"W	7310.58	334.108	0.49	-0.26	-0.41	
14030.00	89.540	342.000	6903.88	7349.48	6666.84	-3222.43	1704305.27	14360223.13	39°32'39.7524"N	80°46'24.1428"W	7404.78	334.203	0.98	-0.19	0.96	
14124.00	91.080	340.500	6903.37	7443.47	6755.85	-3252.65	1704275.07	14360312.10	39°32'40.6328"N	80°46'24.5256"W	7498.08	334.291	2.29	1.64	-1.60	
14219.00	88.710	340.130	6903.54	7538.46	6845.29	-3284.64	1704243.08	14360401.51	39°32'41.5175"N	80°46'24.9312"W	7592.55	334.366	2.52	-2.49	-0.39	
14313.00	90.490	341.480	6904.20	7632.44	6934.05	-3315.55	1704212.19	14360490.24	39°32'42.3956"N	80°46'25.3228"W	7685.96	334.445	2.38	1.89	1.44	
14408.00	90.150	341.670	6903.67	7727.44	7024.18	-3345.57	1704182.18	14360580.33	39°32'43.2871"N	80°46'25.7032"W	7780.23	334.532	0.41	-0.36	0.20	
14503.00	90.090	341.820	6903.47	7822.44	7114.40	-3375.33	1704152.43	14360670.52	39°32'44.1795"N	80°46'26.0802"W	7874.49	334.619	0.17	-0.06	0.16	
14597.00	89.970	341.470	6903.42	7916.43	7203.62	-3404.93	1704122.84	14360759.70	39°32'45.0620"N	80°46'26.4552"W	7967.79	334.701	0.39	-0.13	-0.37	
14692.00	89.880	341.620	6903.55	8011.43	7293.73	-3435.00	1704092.78	14360849.78	39°32'45.9534"N	80°46'26.8362"W	8062.12	334.782	0.18	-0.09	0.16	
14787.00	89.820	342.030	6903.80	8106.43	7383.99	-3464.64	1704063.16	14360940.00	39°32'46.8462"N	80°46'27.2116"W	8156.41	334.864	0.44	-0.06	0.43	
14881.00	89.600	341.420	6904.27	8200.42	7473.25	-3494.11	1704033.69	14361029.22	39°32'47.7290"N	80°46'27.5850"W	8249.74	334.942	0.69	-0.23	-0.65	
14976.00	90.060	341.750	6904.55	8295.42	7563.38	-3524.12	1704003.70	14361119.32	39°32'48.6206"N	80°46'27.9652"W	8344.11	335.017	0.60	0.48	0.35	
15071.00	90.310	341.590	6904.25	8390.41	7653.56	-3554.00	1703973.83	14361209.47	39°32'49.5126"N	80°46'28.3437"W	8438.48	335.092	0.31	0.26	-0.17	
15165.00	90.370	341.560	6903.69	8484.41	7742.74	-3583.71	1703944.13	14361298.61	39°32'50.3947"N	80°46'28.7201"W	8531.88	335.163	0.07	0.06	-0.03	
15260.00	90.340	341.110	6903.10	8579.41	7832.74	-3614.11	1703913.74	14361388.58	39°32'51.2850"N	80°46'29.1053"W	8626.34	335.231	0.47	-0.03	-0.47	
15355.00	90.340	341.500	6902.54	8674.41	7922.73	-3644.56	1703883.31	14361478.53	39°32'52.1751"N	80°46'29.4911"W	8720.81	335.297	0.41	0.00	0.41	
15449.00	90.520	342.090	6901.83	8768.40	8012.02	-3673.93	1703853.95	14361567.78	39°32'53.0583"N	80°46'29.8631"W	8814.21	335.366	0.66	0.19	0.63	
15544.00	89.850	341.200	6901.52	8863.39	8102.19	-3703.84	1703824.05	14361657.91	39°32'53.9502"N	80°46'30.2422"W	8908.64	335.433	1.17	-0.71	-0.94	
15638.00	91.140	342.460	6900.71	8957.38	8191.49	-3733.15	1703794.75	14361747.18	39°32'54.8335"N	80°46'30.6135"W	9002.05	335.500	1.92	1.37	1.34	
15733.00	90.860	341.830	6899.05	9052.35	8281.90	-3762.28	1703765.64	14361837.56	39°32'55.7278"N	80°46'30.9824"W	9096.41	335.569	0.73	-0.29	-0.66	
15827.00	90.650	342.200	6897.82	9146.34	8371.30	-3791.30	1703736.63	14361926.92	39°32'56.6121"N	80°46'31.3500"W	9189.81	335.635	0.45	-0.22	0.39	
15922.00	90.430	341.320	6896.92	9241.33	8461.52	-3821.03	1703706.91	14362017.10	39°32'57.5045"N	80°46'31.7267"W	9284.27	335.697	0.95	-0.23	-0.93	
16017.00	90.370	341.420	6896.26	9336.32	8551.54	-3851.38	1703676.57	14362107.09	39°32'58.3949"N	80°46'32.1112"W	9378.81	335.755	0.12	-0.06	0.11	
16111.00	91.170	341.710	6894.99	9430.31	8640.71	-3881.10	1703646.86	14362196.22	39°32'59.2769"N	80°46'32.4878"W	9472.32	335.812	0.91	0.85	0.31	

RECEIVED  
Office of Oil and Gas  
FEB 24 2023  
WV Department of  
Environmental Protection





# Actual Wellpath Report

Cavatica Unit 2H AWP Proj: 25936'  
Page 8 of 14



REFERENCE WELLPATH IDENTIFICATION			
Operator	ANTERO RESOURCES CORPORATION	Well	Cavatica Unit 2H
Field	Wetzel	API	47-103-03482-0000
Facility	Red Lady Pad	Wellbore	Cavatica Unit 2H AWB
Slot	Slot B		

## WELLPATH DATA (285 stations)

MD [ft]	Inclination [°]	Azimuth [°]	TVD [ft]	Vert Sect [ft]	North [ft]	East [ft]	Grid East [US ft]	Grid North [US ft]	Latitude	Longitude	Closure Dist [ft]	Closure Dir [°]	DLS [°/100ft]	Build Rate [°/100ft]	Turn Rate [°/100ft]	Comments
16206.00	91.080	342.080	6893.13	9525.29	8730.99	-3910.62	1703617.36	14362286.46	39°33'0.1699"N	80°46'32.8618"W	9566.77	335.872	0.40	-0.09	0.39	
18301.00	91.110	342.260	6891.31	9620.26	8821.41	-3939.70	1703588.28	14362376.85	39°33'1.0643"N	80°46'33.2301"W	9661.19	335.934	0.19	0.03	0.19	
16395.00	89.080	341.630	6891.16	9714.24	8910.78	-3968.83	1703559.16	14362466.18	39°33'1.9482"N	80°46'33.5992"W	9754.67	335.992	2.26	-2.16	-0.67	
16490.00	91.050	341.670	6891.05	9809.24	9000.94	-3998.74	1703529.27	14362556.31	39°33'2.8401"N	80°46'33.9781"W	9849.20	336.046	2.07	2.07	0.04	
16585.00	90.620	341.330	6889.66	9904.22	9091.02	-4028.88	1703499.14	14362646.35	39°33'3.7311"N	80°46'34.3600"W	9943.77	336.098	0.58	-0.45	-0.36	
16679.00	90.550	341.670	6888.70	9998.22	9180.16	-4058.70	1703469.33	14362735.46	39°33'4.6128"N	80°46'34.7380"W	10037.35	336.149	0.37	-0.07	0.36	
16774.00	90.370	340.920	6887.94	10093.21	9270.14	-4089.17	1703438.87	14362825.40	39°33'5.5028"N	80°46'35.1240"W	10131.97	336.197	0.81	-0.19	-0.79	
16868.00	91.480	341.540	6886.42	10187.20	9359.13	-4119.41	1703408.64	14362914.35	39°33'6.3831"N	80°46'35.5073"W	10225.59	336.243	1.35	1.18	0.66	
16963.00	90.430	341.220	6884.84	10282.18	9449.14	-4149.74	1703378.33	14363004.33	39°33'7.2734"N	80°46'35.8916"W	10320.20	336.291	1.16	-1.11	-0.34	
17057.00	90.890	341.500	6883.76	10376.18	9538.20	-4179.78	1703348.30	14363093.36	39°33'8.1544"N	80°46'36.2723"W	10413.83	336.336	0.57	0.49	0.30	
17152.00	90.460	340.990	6882.64	10471.17	9628.15	-4210.32	1703317.77	14363183.27	39°33'9.0441"N	80°46'36.6594"W	10508.48	336.381	0.70	-0.45	-0.54	
17247.00	90.550	341.500	6881.80	10566.17	9718.10	-4240.87	1703287.24	14363273.19	39°33'9.9339"N	80°46'37.0464"W	10603.13	336.424	0.55	0.09	0.54	
17341.00	90.890	341.850	6880.62	10660.16	9807.33	-4270.42	1703257.70	14363362.38	39°33'10.8165"N	80°46'37.4209"W	10696.74	336.470	0.52	0.36	0.37	
17436.00	90.310	341.640	6879.63	10755.15	9897.54	-4300.17	1703227.95	14363452.55	39°33'11.7088"N	80°46'37.7979"W	10791.33	336.517	0.65	-0.61	-0.22	
17530.00	90.220	341.540	6879.19	10849.14	9986.73	-4329.86	1703198.28	14363541.71	39°33'12.5910"N	80°46'38.1741"W	10884.97	336.560	0.14	-0.10	-0.11	
17625.00	90.340	341.810	6878.73	10944.14	10076.91	-4359.73	1703168.42	14363631.85	39°33'13.4830"N	80°46'38.5526"W	10979.59	336.604	0.31	0.13	0.28	
17719.00	89.850	341.360	6878.57	11038.14	10166.10	-4389.42	1703138.74	14363721.00	39°33'14.3652"N	80°46'38.9288"W	11073.24	336.647	0.71	-0.52	-0.48	
17814.00	89.510	341.450	6879.10	11133.13	10256.14	-4419.72	1703108.46	14363811.01	39°33'15.2558"N	80°46'39.3127"W	11167.91	336.687	0.37	-0.36	0.09	
17909.00	89.630	341.430	6879.81	11228.13	10346.19	-4449.95	1703078.23	14363901.03	39°33'16.1466"N	80°46'39.6959"W	11262.58	336.727	0.13	0.13	-0.02	
18003.00	89.690	341.460	6880.37	11322.13	10435.30	-4479.87	1703048.33	14363990.10	39°33'17.0280"N	80°46'40.0750"W	11356.27	336.766	0.07	0.06	0.03	
18097.00	89.880	341.650	6880.73	11416.12	10524.48	-4509.61	1703018.60	14364079.24	39°33'17.9100"N	80°46'40.4519"W	11449.94	336.805	0.29	0.20	0.20	
18192.00	89.750	341.280	6881.03	11511.12	10614.55	-4539.80	1702988.42	14364169.27	39°33'18.8010"N	80°46'40.8346"W	11544.63	336.844	0.41	-0.14	-0.39	
18286.00	89.940	341.440	6881.29	11605.12	10703.62	-4569.85	1702958.38	14364258.31	39°33'19.6820"N	80°46'41.2153"W	11638.34	336.880	0.26	0.20	0.17	
18381.00	89.540	341.390	6881.72	11700.12	10793.66	-4600.13	1702928.12	14364348.32	39°33'20.5727"N	80°46'41.5990"W	11733.04	336.917	0.42	-0.42	-0.05	
18476.00	89.570	341.400	6882.46	11795.12	10883.69	-4630.43	1702897.82	14364438.31	39°33'21.4632"N	80°46'41.9832"W	11827.75	336.953	0.03	0.03	0.01	
18570.00	89.600	341.170	6883.14	11889.11	10972.72	-4660.59	1702867.67	14364527.31	39°33'22.3438"N	80°46'42.3654"W	11921.48	336.987	0.25	0.03	-0.24	
18665.00	89.110	340.860	6884.21	11984.11	11062.55	-4691.50	1702836.78	14364617.10	39°33'23.2324"N	80°46'42.7571"W	12016.24	337.019	0.61	-0.52	-0.33	
18760.00	89.320	341.170	6885.51	12079.10	11152.37	-4722.40	1702805.89	14364706.88	39°33'24.1209"N	80°46'43.1488"W	12111.00	337.050	0.39	0.22	0.33	
18854.00	89.230	341.050	6886.70	12173.09	11241.30	-4752.83	1702775.48	14364795.78	39°33'25.0005"N	80°46'43.5346"W	12204.76	337.081	0.16	-0.10	-0.13	
18948.00	89.600	341.290	6887.66	12267.09	11330.27	-4783.17	1702745.15	14364884.71	39°33'25.8805"N	80°46'43.9191"W	12298.52	337.113	0.47	0.39	0.26	

RECEIVED  
 Office of Oil and Gas  
 WV Department of  
 Environmental Protection  
 FEB 24 2023



# Actual Wellpath Report

Cavatica Unit 2H AWP Proj: 25936'  
Page 9 of 14



REFERENCE WELLPATH IDENTIFICATION			
Operator	ANTERO RESOURCES CORPORATION	Well	Cavatica Unit 2H
Field	Wetzel	API	47-103-03482-0000
Facility	Red Lady Pad	Wellbore	Cavatica Unit 2H AWP
Slot	Slot B		

WELLPATH DATA (285 stations)																
MD [ft]	Inclination [°]	Azimuth [°]	TVD [ft]	Vert Sect [ft]	North [ft]	East [ft]	Grid East [US ft]	Grid North [US ft]	Latitude	Longitude	Closure Dist [ft]	Closure Dir [°]	DLS [°/100ft]	Build Rate [°/100ft]	Turn Rate [°/100ft]	Comments
19043.00	89.050	341.200	6888.78	12362.08	11420.21	-4813.71	1702714.62	14364974.62	39°33'26.7703"N	80°46'44.3062"W	12393.27	337.144	0.59	-0.58	-0.09	
19137.00	89.600	341.740	6889.88	12456.07	11509.33	-4843.58	1702684.76	14365063.71	39°33'27.6518"N	80°46'44.6848"W	12487.00	337.177	0.82	0.59	0.57	
19232.00	89.910	341.690	6890.29	12551.07	11599.54	-4873.39	1702654.97	14365153.87	39°33'28.5440"N	80°46'45.0625"W	12581.70	337.211	0.33	0.33	-0.05	
19326.00	89.290	341.730	6890.95	12645.06	11688.79	-4902.89	1702625.48	14365243.09	39°33'29.4268"N	80°46'45.4363"W	12675.41	337.244	0.66	-0.66	0.04	
19421.00	89.290	342.250	6892.12	12740.04	11779.12	-4932.26	1702596.12	14365333.39	39°33'30.3203"N	80°46'45.8085"W	12770.08	337.280	0.55	0.00	0.55	
19515.00	89.050	340.850	6893.48	12834.03	11868.28	-4962.00	1702566.39	14365422.51	39°33'31.2022"N	80°46'46.1854"W	12863.81	337.311	1.51	-0.26	-1.49	
19610.00	89.660	341.100	6894.55	12929.02	11958.08	-4992.97	1702535.43	14365512.28	39°33'32.0905"N	80°46'46.5780"W	12958.61	337.338	0.69	0.64	0.26	
19704.00	90.710	341.540	6894.25	13023.02	12047.13	-5023.07	1702505.34	14365601.29	39°33'32.9713"N	80°46'46.9596"W	13052.38	337.366	1.21	1.12	0.47	
19799.00	90.400	341.980	6893.33	13118.01	12137.35	-5052.81	1702475.62	14365691.48	39°33'33.8637"N	80°46'47.3364"W	13147.10	337.398	0.57	-0.33	0.46	
19893.00	89.970	341.410	6893.03	13212.01	12226.60	-5082.33	1702446.11	14365780.68	39°33'34.7464"N	80°46'47.7105"W	13240.83	337.428	0.78	-0.46	-0.61	
19988.00	89.970	341.200	6893.08	13307.01	12316.58	-5112.78	1702415.67	14365870.64	39°33'35.6365"N	80°46'48.0965"W	13335.62	337.456	0.22	0.00	-0.22	
20082.00	90.030	341.180	6893.08	13401.01	12405.56	-5143.10	1702385.36	14365959.57	39°33'36.5166"N	80°46'48.4809"W	13429.42	337.482	0.08	0.08	-0.04	
20177.00	89.970	340.990	6893.08	13496.00	12495.42	-5173.91	1702354.56	14366049.40	39°33'37.4055"N	80°46'48.8715"W	13524.24	337.507	0.19	-0.06	-0.18	
20271.00	90.030	340.780	6893.08	13590.00	12584.24	-5204.70	1702323.79	14366138.19	39°33'38.2840"N	80°46'49.2617"W	13618.07	337.531	0.23	0.06	-0.22	
20366.00	90.250	341.220	6892.84	13685.00	12674.06	-5235.63	1702292.87	14366227.97	39°33'39.1725"N	80°46'49.6538"W	13712.90	337.555	0.52	0.23	0.46	
20460.00	90.120	341.040	6892.54	13779.00	12763.01	-5266.03	1702262.48	14366316.89	39°33'40.0524"N	80°46'50.0392"W	13806.72	337.579	0.24	-0.14	-0.19	
20555.00	90.090	340.970	6892.37	13874.00	12852.84	-5296.95	1702231.57	14366406.68	39°33'40.9409"N	80°46'50.4312"W	13901.55	337.602	0.08	-0.03	-0.07	
20650.00	90.150	340.970	6892.17	13969.00	12942.64	-5327.92	1702200.61	14366496.45	39°33'41.8292"N	80°46'50.8239"W	13996.39	337.625	0.06	0.06	0.00	
20744.00	90.000	341.520	6892.04	14063.00	13031.65	-5358.15	1702170.40	14366585.42	39°33'42.7096"N	80°46'51.2070"W	14080.20	337.649	0.61	-0.16	0.59	
20839.00	89.880	340.570	6892.14	14158.00	13121.50	-5389.00	1702139.55	14366675.23	39°33'43.5984"N	80°46'51.5982"W	14185.03	337.672	1.01	-0.13	-1.00	
20934.00	90.000	340.900	6892.24	14252.99	13211.18	-5420.35	1702108.22	14366764.88	39°33'44.4855"N	80°46'51.9957"W	14279.90	337.692	0.37	0.13	0.35	
21028.00	89.940	340.760	6892.29	14346.99	13299.97	-5451.22	1702077.37	14366853.63	39°33'45.3637"N	80°46'52.3870"W	14373.76	337.713	0.16	-0.06	-0.15	
21123.00	89.940	340.970	6892.39	14441.99	13389.72	-5482.36	1702046.24	14366943.35	39°33'46.2515"N	80°46'52.7818"W	14468.61	337.734	0.22	0.00	0.22	
21217.00	90.310	341.230	6892.19	14535.99	13478.65	-5512.80	1702015.80	14367032.24	39°33'47.1311"N	80°46'53.1678"W	14562.45	337.755	0.48	0.39	0.28	
21312.00	90.150	340.810	6891.81	14630.99	13568.48	-5543.70	1701984.92	14367122.04	39°33'48.0197"N	80°46'53.5596"W	14657.30	337.776	0.47	-0.17	-0.44	
21406.00	90.250	341.170	6891.48	14724.99	13657.36	-5574.32	1701954.31	14367210.88	39°33'48.8988"N	80°46'53.9478"W	14751.15	337.797	0.40	0.11	0.38	
21501.00	90.000	340.930	6891.27	14819.99	13747.21	-5605.17	1701923.47	14367300.69	39°33'49.7876"N	80°46'54.3389"W	14846.00	337.818	0.36	-0.26	-0.25	
21596.00	90.710	341.660	6890.68	14914.98	13837.19	-5635.64	1701893.02	14367390.64	39°33'50.6776"N	80°46'54.7251"W	14940.82	337.840	1.07	0.75	0.77	
21690.00	89.660	339.750	6890.38	15008.97	13925.90	-5666.69	1701861.97	14367479.32	39°33'51.5551"N	80°46'55.1189"W	15034.70	337.858	2.32	-1.12	-2.03	
21784.00	90.180	341.310	6890.51	15102.96	14014.52	-5698.02	1701830.66	14367567.90	39°33'52.4317"N	80°46'55.5162"W	15128.59	337.874	1.75	0.55	1.66	

RECEIVED  
Office of Oil and Gas  
FEB 24 2023  
WV Department of  
Environmental Protection



# Actual Wellpath Report

Cavatica Unit 2H AWP Proj: 25936'

Page 10 of 14



REFERENCE WELLPATH IDENTIFICATION			
Operator	ANTERO RESOURCES CORPORATION	Well	Cavatica Unit 2H
Field	Wetzel	API	47-103-03482-0000
Facility	Red Lady Pad	Wellbore	Cavatica Unit 2H AWB
Slot	Slot B		

WELLPATH DATA (285 stations)																
MD [ft]	Inclination [°]	Azimuth [°]	TVD [ft]	Vert Sect [ft]	North [ft]	East [ft]	Grid East [US ft]	Grid North [US ft]	Latitude	Longitude	Closure Dist [ft]	Closure Dir [°]	DLS [°/100ft]	Build Rate [°/100ft]	Turn Rate [°/100ft]	Comments
21878.00	90.830	341.990	6889.68	15196.96	14103.74	-5727.62	1701801.08	14367657.08	39°33'53.3142"N	80°46'55.8913"W	15222.39	337.898	1.00	0.69	0.72	
21973.00	90.000	340.800	6888.99	15291.95	14193.77	-5757.92	1701770.78	14367747.08	39°33'54.2047"N	80°46'56.2755"W	15317.21	337.919	1.53	-0.87	-1.25	
22067.00	90.150	341.310	6888.87	15385.95	14282.68	-5788.44	1701740.28	14367835.95	39°33'55.0841"N	80°46'56.6624"W	15411.07	337.938	0.57	0.16	0.54	
22162.00	90.310	341.620	6888.49	15480.95	14372.75	-5818.64	1701710.09	14367925.99	39°33'55.9750"N	80°46'57.0452"W	15505.89	337.960	0.37	0.17	0.33	
22256.00	90.650	341.510	6887.70	15574.94	14461.92	-5848.37	1701680.38	14368015.12	39°33'56.8571"N	80°46'57.4220"W	15599.70	337.982	0.38	0.36	-0.12	
22351.00	90.550	341.440	6886.71	15669.94	14551.99	-5878.55	1701650.21	14368105.16	39°33'57.7480"N	80°46'57.8046"W	15694.52	338.003	0.13	-0.11	-0.07	
22446.00	90.550	341.290	6885.79	15764.93	14642.01	-5908.90	1701619.86	14368195.14	39°33'58.6384"N	80°46'58.1895"W	15789.35	338.023	0.18	0.00	-0.16	
22540.00	90.710	341.300	6884.76	15858.93	14731.04	-5939.04	1701589.73	14368284.13	39°33'59.5190"N	80°46'58.5716"W	15883.19	338.042	0.17	0.17	0.01	
22635.00	90.430	341.760	6883.82	15953.92	14821.14	-5969.14	1701559.65	14368374.20	39°34'0.4102"N	80°46'58.9531"W	15978.01	338.063	0.57	-0.29	0.48	
22730.00	90.800	340.830	6882.80	16048.91	14911.12	-5999.60	1701529.20	14368464.14	39°34'1.3002"N	80°46'59.3393"W	16072.86	338.082	1.05	0.39	-0.98	
22824.00	91.230	341.260	6881.13	16142.90	15000.01	-6030.13	1701498.68	14368552.99	39°34'2.1794"N	80°46'59.7264"W	16166.71	338.099	0.65	0.46	0.46	
22919.00	91.600	341.930	6878.78	16237.88	15090.12	-6060.12	1701468.71	14368643.07	39°34'3.0707"N	80°47'0.1065"W	16261.51	338.120	0.81	0.39	0.71	
23013.00	90.800	340.770	6876.82	16331.84	15179.16	-6090.17	1701438.67	14368732.08	39°34'3.9515"N	80°47'0.4875"W	16355.34	338.138	1.50	-0.85	-1.23	
23107.00	90.710	341.210	6875.58	16425.83	15268.03	-6120.79	1701408.06	14368820.91	39°34'4.8305"N	80°47'0.8758"W	16449.21	338.155	0.48	-0.10	0.47	
23202.00	90.520	341.750	6874.56	16520.83	15358.10	-6150.96	1701377.90	14368910.95	39°34'5.7214"N	80°47'1.2583"W	16544.05	338.174	0.60	-0.20	0.57	
23296.00	89.600	340.990	6874.46	16614.82	15447.17	-6180.99	1701347.88	14368999.98	39°34'6.6025"N	80°47'1.6390"W	16637.90	338.192	1.27	-0.98	-0.81	
23391.00	90.340	341.680	6874.51	16709.82	15537.18	-6211.39	1701317.49	14369089.95	39°34'7.4927"N	80°47'2.0244"W	16732.76	338.210	1.07	0.78	0.73	
23486.00	90.400	341.010	6873.90	16804.82	15627.18	-6241.78	1701287.12	14369179.92	39°34'8.3830"N	80°47'2.4097"W	16827.61	338.227	0.71	0.06	-0.71	
23580.00	90.180	340.850	6873.42	16898.82	15716.02	-6272.49	1701256.42	14369268.73	39°34'9.2617"N	80°47'2.7992"W	16921.51	338.242	0.29	-0.23	-0.17	
23675.00	90.340	341.250	6872.99	16993.81	15805.87	-6303.34	1701225.58	14369358.54	39°34'10.1505"N	80°47'3.1903"W	17016.39	338.258	0.45	0.17	0.42	
23769.00	90.030	341.350	6872.69	17087.81	15894.91	-6333.48	1701195.46	14369447.54	39°34'11.0312"N	80°47'3.5724"W	17110.26	338.275	0.35	-0.33	0.11	
23863.00	90.250	340.890	6872.46	17181.81	15983.85	-6363.89	1701165.05	14369536.45	39°34'11.9109"N	80°47'3.9581"W	17204.15	338.290	0.54	0.23	-0.49	
23958.00	90.030	341.400	6872.22	17276.81	16073.75	-6394.60	1701134.36	14369626.31	39°34'12.8002"N	80°47'4.3474"W	17299.03	338.306	0.58	-0.23	0.54	
24052.00	90.030	340.350	6872.17	17370.81	16162.56	-6425.39	1701103.58	14369715.09	39°34'13.6786"N	80°47'4.7380"W	17392.93	338.320	1.12	0.00	-1.12	
24147.00	90.000	340.940	6872.15	17465.80	16252.19	-6456.88	1701072.11	14369804.68	39°34'14.5652"N	80°47'5.1373"W	17487.86	338.332	0.62	-0.03	0.62	
24241.00	89.860	340.900	6872.25	17559.80	16341.03	-6487.60	1701041.39	14369893.49	39°34'15.4439"N	80°47'5.5270"W	17581.76	338.346	0.13	-0.13	-0.04	
24335.00	90.090	340.730	6872.27	17653.80	16429.81	-6518.49	1701010.51	14369982.23	39°34'16.3221"N	80°47'5.9187"W	17675.67	338.359	0.29	0.22	-0.18	
24430.00	89.850	341.160	6872.32	17748.80	16519.60	-6549.51	1700979.51	14370071.99	39°34'17.2103"N	80°47'6.3120"W	17770.58	338.373	0.52	-0.25	0.45	
24524.00	89.760	341.160	6872.63	17842.80	16608.57	-6579.86	1700949.17	14370160.92	39°34'18.0902"N	80°47'6.6969"W	17864.47	338.388	0.07	-0.07	0.00	
24619.00	89.020	340.730	6873.62	17937.79	16698.36	-6610.88	1700918.17	14370250.67	39°34'18.9784"N	80°47'7.0902"W	17959.37	338.401	0.92	-0.80	-0.45	

RECEIVED  
 Office of Oil and Gas  
 FEB 24 2023  
 WV Department of  
 Environmental Protection



# Actual Wellpath Report

Cavatica Unit 2H AWP Proj: 25936'

Page 11 of 14



REFERENCE WELLPATH IDENTIFICATION			
Operator	ANTERO RESOURCES CORPORATION	Well	Cavatica Unit 2H
Field	Wetzel	API	47-103-03482-0000
Facility	Red Lady Pad	Wellbore	Cavatica Unit 2H AWB
Slot	Slot B		

WELLPATH DATA (285 stations) † = interpolated, ‡ = extrapolated station																
MD [ft]	Inclination [°]	Azimuth [°]	TVD [ft]	Vert Sect [ft]	North [ft]	East [ft]	Grid East [US ft]	Grid North [US ft]	Latitude	Longitude	Closure Dist [ft]	Closure Dir [°]	DLS ["/100ft]	Build Rate ["/100ft]	Turn Rate ["/100ft]	Comments
24713.00	89.910	341.350	6874.50	18031.79	16787.25	-6641.42	1700887.64	14370339.53	39°34'19.8576"N	80°47'7.4775"W	18053.26	338.415	1.15	0.95	0.66	
24808.00	89.910	341.370	6874.65	18126.79	16877.27	-6671.78	1700857.29	14370429.51	39°34'20.7480"N	80°47'7.8625"W	18148.14	338.431	0.02	0.00	0.02	
24902.00	89.940	340.950	6874.77	18220.79	16966.23	-6702.14	1700826.94	14370518.44	39°34'21.6280"N	80°47'8.2474"W	18242.03	338.445	0.45	0.03	-0.45	
24997.00	90.030	341.150	6874.80	18315.79	17056.08	-6732.99	1700796.10	14370608.25	39°34'22.5167"N	80°47'8.6387"W	18336.93	338.458	0.23	0.09	0.21	
25092.00	89.480	341.010	6875.20	18410.78	17145.95	-6763.79	1700765.31	14370698.08	39°34'23.4056"N	80°47'9.0293"W	18431.83	338.472	0.60	-0.58	-0.15	
25186.00	89.780	341.130	6875.81	18504.78	17234.86	-6794.28	1700734.83	14370786.96	39°34'24.2851"N	80°47'9.4160"W	18525.73	338.485	0.34	0.32	0.13	
25281.00	89.230	340.510	6876.63	18599.77	17324.59	-6825.49	1700703.63	14370876.65	39°34'25.1726"N	80°47'9.8118"W	18620.65	338.497	0.87	-0.58	-0.65	
25375.00	90.280	341.440	6877.03	18693.77	17413.45	-6856.13	1700673.01	14370965.48	39°34'26.0515"N	80°47'10.2004"W	18714.56	338.509	1.49	1.12	0.99	
25470.00	89.750	341.080	6877.01	18788.77	17503.41	-6886.66	1700642.50	14371055.40	39°34'26.9414"N	80°47'10.5874"W	18809.45	338.523	0.67	-0.56	-0.38	
25564.00	89.570	341.220	6877.56	18882.77	17592.37	-6917.03	1700612.14	14371144.33	39°34'27.8213"N	80°47'10.9726"W	18903.35	338.536	0.24	-0.19	0.15	
25659.00	89.660	341.190	6878.20	18977.77	17682.30	-6947.63	1700581.54	14371234.22	39°34'28.7108"N	80°47'11.3607"W	18998.25	338.549	0.10	0.09	-0.03	
25753.00	89.600	340.880	6878.81	19071.76	17771.20	-6978.18	1700551.01	14371323.08	39°34'29.5901"N	80°47'11.7481"W	19092.16	338.562	0.34	-0.06	-0.33	
25848.00	89.630	341.110	6879.45	19166.76	17861.01	-7009.12	1700520.08	14371412.87	39°34'30.4785"N	80°47'12.1405"W	19187.07	338.574	0.24	0.03	0.24	
25911.00	89.690	341.190	6879.82	19229.76	17920.63	-7029.47	1700499.74	14371472.46	39°34'31.0682"N	80°47'12.3986"W	19250.00	338.582	0.16	0.10	0.13	
25936.00‡	89.690	341.190	6879.96	19254.76	17944.30	-7037.53	1700491.68	14371496.12	39°34'31.3023"N	80°47'12.5008"W	19274.98	338.586	0.00	0.00	0.00	Projected MD at TD: 25936'

RECEIVED  
 Office of Oil and Gas  
 FEB 24 2023  
 WV Department of  
 Environmental Protection



# Actual Wellpath Report

Cavatica Unit 2H AWP Proj: 25936'

Page 12 of 14



## REFERENCE WELLPATH IDENTIFICATION

Operator	ANTERO RESOURCES CORPORATION	Well	Cavatica Unit 2H
Field	Wetzel	API	47-103-03482-0000
Facility	Red Lady Pad	Wellbore	Cavatica Unit 2H AWB
Slot	Slot B		

## HOLE & CASING SECTIONS - Ref Wellbore: Cavatica Unit 2H AWB Ref Wellpath: Cavatica Unit 2H AWP Proj: 25936'

String/Diameter	Start MD [ft]	End MD [ft]	Interval [ft]	Start TVD [ft]	End TVD [ft]	Start N/S [ft]	Start E/W [ft]	End N/S [ft]	End E/W [ft]
20in Conductor	25.50	126.00	100.50	25.50	126.00	0.00	0.00	0.00	0.30
17.5in Open Hole	126.00	936.00	810.00	126.00	936.00	0.00	0.30	-0.98	1.32
13.375in Casing Surface	25.50	916.00	890.50	25.50	916.00	0.00	0.00	-1.00	1.39
12.25in Open Hole	936.00	3440.00	2504.00	936.00	3438.28	-0.98	1.32	-10.56	-49.49
9.625in Casing Intermediate	25.50	3420.00	3394.50	25.50	3418.28	0.00	0.00	-10.63	-49.24
8.75in Open Hole	3440.00	6231.00	2791.00	3438.28	6141.45	-10.56	-49.49	-215.89	-668.43
8.5in Open Hole	6231.00	25936.00	19705.00	6141.45	6879.96	-215.89	-668.43	17944.30	-7037.53
5.5in Casing Production	25.50	25916.00	25890.50	25.50	6879.85	0.00	0.00	17925.37	-7031.08

## TARGETS

Name	TVD [ft]	North [ft]	East [ft]	Grid East [US ft]	Grid North [US ft]	Latitude	Longitude	Shape
Cavatica Unit 2H POE Rev-3	6880.00	253.39	-1027.98	1706498.85	14353812.23	39°31'36.3110"N	80°45'56.3442"W	point
Cavatica Unit 2H BHL Rev-3	6905.00	18453.00	-7220.88	1700308.41	14372004.62	39°34'36.3342"N	80°47'14.8269"W	point
Cavatica Unit 2H LP Rev-3	6905.00	430.97	-1088.40	1706438.45	14353989.74	39°31'38.0676"N	80°45'57.1094"W	point
Cavatica Unit 2H 50' L/R Hard Line	7250.00	9353.20	-4124.43	1703403.63	14362908.43	39°33'6.3246"N	80°46'35.5715"W	rectangle

2D Rectangle 19224.4 x 100.

RECEIVED  
 Office of Oil and Gas  
 FEB 24 2023  
 WV Department of  
 Environmental Protection



# Actual Wellpath Report

Cavatica Unit 2H AWP Proj: 25936'

Page 13 of 14



## REFERENCE WELLPATH IDENTIFICATION

Operator	ANTERO RESOURCES CORPORATION	Well	Cavatica Unit 2H
Field	Wetzel	API	47-103-03482-0000
Facility	Red Lady Pad	Wellbore	Cavatica Unit 2H AWB
Slot	Slot B		

## WELLPATH COMPOSITION - Ref Wellbore: Cavatica Unit 2H AWB Ref Wellpath: Cavatica Unit 2H AWP Proj: 25936'

Start MD [ft]	End MD [ft]	Positional Uncertainty Model	Log Name/Comment	Wellbore	Survey Date
25.50	980.00	Gyrodata 2015 - GC+WIR+CAS	02_Gyrodata MS Gyro <17-1/2"> (100'-980')	Cavatica Unit 2H AWB	5/25/2022
980.00	3366.00	BH NaviTrak (2019) (Axial Corr+HRGM)	03_APS EM <12-1/4"> (980')(1054'-3366')	Cavatica Unit 2H AWB	5/17/2022
3366.00	6160.00	BH NaviTrak (2019) (Axial Corr+HRGM)	04_APS EM <8-3/4"> (3366')(3418'-6160')	Cavatica Unit 2H AWB	7/11/2022
6160.00	25936.00	BH AutoTrak Curve/eXpress (2019) (HRGM, Short spacing)	05_BH AT Curve <8-1/2"> (6160')(6209'-25911')	Cavatica Unit 2H AWB	7/11/2022

RECEIVED  
 Office of Oil and Gas  
 FEB 24 2023  
 WV Department of  
 Environmental Protection



# Actual Wellpath Report

Cavatica Unit 2H AWP Proj: 25936'  
Page 14 of 14



REFERENCE WELLPATH IDENTIFICATION			
Operator	ANTERO RESOURCES CORPORATION	Well	Cavatica Unit 2H
Field	Wetzel	API	47-103-03482-0000
Facility	Red Lady Pad	Wellbore	Cavatica Unit 2H AWB
Slot	Slot B		

COMMENTS
<p><b>Wellpath general comments</b> API: 47-103-03482-0000 BH Job #: 111354345 Rig: H&amp;P 317 Duration: 7/14/2022-7/19/2022 Gyrodatta MS Gyro &lt;17-1/2"&gt; (100'-980') APS EM &lt;12-1/4"&gt; (980')(1054'-3366') APS EM &lt;8-3/4"&gt; (3366')(3418'-6160') BH AT Curve &lt;8-1/2"&gt; (6160')(6209'-25911') Sycamore: 6694' MD Middlesex: 6849' MD Burkett: 7009' MD Tully: 7066' MD Hamilton: 7174' MD Marcellus POE: 7262' MD Projected MD at TD: 25936'</p>

RECEIVED  
Office of Oil and Gas  
FEB 24 2023  
WV Department of  
Environmental Protection