



RECEIVED  
Office Of Oil and Gas

OCT 02 2024

WV Department of  
Environmental Protection

# Actual Wellpath Report

Elmer N-14 HU AWP Proj:29116'

Page 1 of 16



## REFERENCE WELLPATH IDENTIFICATION

Operator	EQT (TUG HILL OPERATING, LLC)	Well	Elmer N-14 HU
Field	Wetzel	API/Legal	
Facility	Elmer Pad	Wellbore	Elmer N-14 HU AWB
Slot	Slot 14		

## REPORT SETUP INFORMATION

Projection System	NAD83 / UTM Zone 17 North, US feet	Software System	WellArchitect® 6.0
North Reference	Grid	User	Scurdan
Scale	0.999606	Report Generated	10/31/2023 at 8:22:44 AM
Convergence at slot	0.17° East	Database	WA_MPL_EASTERNUS_Defn

## WELLPATH LOCATION

	Local coordinates		Grid coordinates		Geographic coordinates	
	North[ft]	East[ft]	Easting[US ft]	Northing[US ft]	Latitude	Longitude
Slot Location	85.38	21.37	1714229.10	14415399.18	39°41'38.2198"N	80°44'15.3600"W
Facility Reference Pt			1714207.74	14415313.83	39°41'37.3765"N	80°44'15.6366"W
Field Reference Pt			1628437.04	12695896.25	34°58'12.0000"N	81°02'24.0000"W

## WELLPATH DATUM

Calculation method	Minimum curvature	Nabors X08 (RKB) to Facility Vertical Datum	1310.00ft
Horizontal Reference Pt	Slot	Nabors X08 (RKB) to Mean Sea Level	1310.00ft
Vertical Reference Pt	Nabors X08 (RKB)	Nabors X08 (RKB) to Ground Level at Slot (Slot 14)	33.00ft
MD Reference Pt	Nabors X08 (RKB)	Section Origin	N 0.00, E 0.00 ft
Field Vertical Reference	Mean Sea Level	Section Azimuth	322.61°





RECEIVED  
Office Of Oil and Gas

OCT 02 2024

WV Department of

# Actual Wellpath Report

Elmer N-14 HU AWP Proj:29116'

Page 2 of 16



## REFERENCE WELLPATH IDENTIFICATION

Operator	EQT (TUG HILL OPERATING, LLC)	Well	Elmer N-14 HU
Field	Wetzel	API/Legal	
Facility	Elmer Pad	Wellbore	Elmer N-14 HU AWP
Slot	Slot 14		

## WELLPATH DATA (373 stations) † = interpolated, ‡ = extrapolated station

MD [ft]	Inclination [°]	Azimuth [°]	TVD [ft]	Vert Sect [ft]	North [ft]	East [ft]	Grid East [US ft]	Grid North [US ft]	Latitude	Longitude	Closure Dist [ft]	Closure Dir [°]	DLS [°/100ft]	Build Rate [°/100ft]	Turn Rate [°/100ft]
0.00†	0.000	214.680	0.00	0.00	0.00	0.00	1714229.10	14415399.18	39°41'38.2198"N	80°44'15.3600"W	0.00	0.000	0.00	0.00	0.00
33.00	0.000	214.680	33.00	0.00	0.00	0.00	1714229.10	14415399.18	39°41'38.2198"N	80°44'15.3600"W	0.00	0.000	0.00	0.00	0.00
181.00	0.390	214.680	181.00	-0.16	-0.41	-0.29	1714228.81	14415398.77	39°41'38.2157"N	80°44'15.3637"W	0.50	214.680	0.26	0.26	0.00
225.00	0.320	230.570	225.00	-0.21	-0.62	-0.47	1714228.63	14415398.56	39°41'38.2137"N	80°44'15.3660"W	0.77	217.176	0.27	-0.16	36.11
269.00	0.310	232.070	269.00	-0.21	-0.77	-0.66	1714228.44	14415398.41	39°41'38.2122"N	80°44'15.3684"W	1.01	220.533	0.03	-0.02	3.41
313.00	0.190	257.910	313.00	-0.18	-0.86	-0.82	1714228.28	14415398.33	39°41'38.2113"N	80°44'15.3706"W	1.19	223.827	0.37	-0.27	58.73
357.00	0.240	271.580	357.00	-0.09	-0.87	-0.98	1714228.12	14415398.31	39°41'38.2112"N	80°44'15.3726"W	1.31	228.596	0.16	0.11	31.07
401.00	0.200	264.130	401.00	0.01	-0.87	-1.15	1714227.95	14415398.31	39°41'38.2112"N	80°44'15.3748"W	1.45	232.858	0.11	-0.09	-16.93
445.00	0.240	296.070	445.00	0.13	-0.84	-1.31	1714227.79	14415398.34	39°41'38.2115"N	80°44'15.3768"W	1.56	237.354	0.29	0.09	72.59
488.00	0.290	293.400	488.00	0.30	-0.76	-1.49	1714227.61	14415398.42	39°41'38.2123"N	80°44'15.3791"W	1.67	243.087	0.12	0.12	-6.21
532.00	0.310	292.670	531.99	0.50	-0.67	-1.70	1714227.40	14415398.51	39°41'38.2132"N	80°44'15.3819"W	1.83	248.614	0.05	0.05	-1.66
576.00	0.080	278.420	575.99	0.63	-0.62	-1.84	1714227.26	14415398.56	39°41'38.2137"N	80°44'15.3836"W	1.95	251.503	0.53	-0.52	-32.39
620.00	0.170	230.670	619.99	0.65	-0.65	-1.93	1714227.18	14415398.53	39°41'38.2134"N	80°44'15.3847"W	2.03	251.240	0.30	0.20	-108.52
664.00	0.110	217.580	663.99	0.64	-0.73	-2.00	1714227.10	14415398.45	39°41'38.2126"N	80°44'15.3857"W	2.13	249.994	0.15	-0.14	-29.75
708.00	0.090	264.770	707.99	0.64	-0.77	-2.06	1714227.04	14415398.41	39°41'38.2123"N	80°44'15.3864"W	2.20	249.634	0.19	-0.05	107.25
753.00	0.180	290.610	752.99	0.72	-0.74	-2.16	1714226.94	14415398.44	39°41'38.2125"N	80°44'15.3877"W	2.29	251.026	0.24	0.20	57.42
797.00	0.280	297.950	796.99	0.88	-0.67	-2.32	1714226.78	14415398.51	39°41'38.2132"N	80°44'15.3898"W	2.42	253.932	0.24	0.23	16.68
841.00	0.190	296.170	840.99	1.04	-0.59	-2.48	1714226.62	14415398.59	39°41'38.2140"N	80°44'15.3918"W	2.55	256.712	0.21	-0.20	-4.05
885.00	0.350	274.440	884.99	1.20	-0.54	-2.68	1714226.42	14415398.64	39°41'38.2145"N	80°44'15.3944"W	2.74	258.539	0.43	0.36	-49.39
929.00	0.210	292.950	928.99	1.36	-0.50	-2.89	1714226.21	14415398.68	39°41'38.2149"N	80°44'15.3970"W	2.93	260.147	0.37	-0.32	42.07
973.00	0.300	273.370	972.99	1.50	-0.46	-3.08	1714226.02	14415398.72	39°41'38.2153"N	80°44'15.3994"W	3.12	261.435	0.28	0.20	-44.50
1017.00	0.320	292.030	1016.99	1.68	-0.41	-3.31	1714225.79	14415398.77	39°41'38.2158"N	80°44'15.4024"W	3.33	262.919	0.23	0.05	42.41
1061.00	0.180	279.310	1060.99	1.84	-0.35	-3.49	1714225.61	14415398.83	39°41'38.2164"N	80°44'15.4047"W	3.51	264.214	0.34	-0.32	-28.91
1105.00	0.300	290.740	1104.99	1.99	-0.30	-3.67	1714225.43	14415398.88	39°41'38.2169"N	80°44'15.4069"W	3.68	265.295	0.29	0.27	25.98
1145.00	0.360	293.150	1144.99	2.19	-0.22	-3.88	1714225.22	14415398.96	39°41'38.2177"N	80°44'15.4097"W	3.89	266.824	0.15	0.15	6.02
1194.00	0.120	308.250	1193.99	2.37	-0.12	-4.06	1714225.04	14415399.06	39°41'38.2187"N	80°44'15.4120"W	4.06	268.265	0.50	-0.49	30.82
1238.00	0.150	19.350	1237.99	2.45	-0.04	-4.08	1714225.02	14415399.14	39°41'38.2195"N	80°44'15.4122"W	4.08	269.435	0.36	0.07	161.59
1282.00	0.230	104.220	1281.99	2.41	-0.01	-3.98	1714225.13	14415399.17	39°41'38.2198"N	80°44'15.4109"W	3.98	269.891	0.60	0.18	192.89
1326.00	0.220	120.380	1325.99	2.26	-0.07	-3.82	1714225.28	14415399.11	39°41'38.2192"N	80°44'15.4088"W	3.82	268.920	0.15	-0.02	36.73
1371.00	0.080	130.950	1370.99	2.15	-0.14	-3.72	1714225.38	14415399.04	39°41'38.2185"N	80°44'15.4076"W	3.72	267.902	0.32	-0.31	23.49





RECEIVED  
Office Of Oil and Gas  
OCT 02 2024

# Actual Wellpath Report

Elmer N-14 HU AWP Proj:29116'

Page 3 of 16



WV Department of Environmental Protection

REFERENCE WELLPATH IDENTIFICATION			
Operator	EQT (TUG HILL OPERATING, LLC)	Well	Elmer N-14 HU
Field	Wetzel	API/Legal	
Facility	Elmer Pad	Wellbore	Elmer N-14 HU AWB
Slot	Slot 14		

## WELLPATH DATA (373 stations)

MD [ft]	Inclination [°]	Azimuth [°]	TVD [ft]	Vert Sect [ft]	North [ft]	East [ft]	Grid East [US ft]	Grid North [US ft]	Latitude	Longitude	Closure Dist [ft]	Closure Dir [°]	DLS [°/100ft]	Build Rate [°/100ft]	Turn Rate [°/100ft]
1415.00	0.110	71.750	1414.99	2.11	-0.14	-3.66	1714225.45	14415399.04	39°41'38.2185"N	80°44'15.4068"W	3.66	267.757	0.22	0.07	-134.55
1459.00	0.030	106.140	1458.99	2.08	-0.13	-3.60	1714225.50	14415399.05	39°41'38.2186"N	80°44'15.4061"W	3.61	267.884	0.20	-0.18	78.16
1503.00	0.090	29.460	1502.99	2.09	-0.11	-3.58	1714225.53	14415399.07	39°41'38.2188"N	80°44'15.4058"W	3.58	268.298	0.20	0.14	-174.27
1547.00	0.180	109.190	1546.99	2.04	-0.10	-3.49	1714225.61	14415399.08	39°41'38.2189"N	80°44'15.4047"W	3.50	268.379	0.42	0.20	181.20
1590.00	0.150	71.250	1589.99	1.97	-0.10	-3.38	1714225.72	14415399.08	39°41'38.2188"N	80°44'15.4032"W	3.38	268.253	0.26	-0.07	-88.23
1634.00	0.240	94.910	1633.99	1.89	-0.09	-3.23	1714225.87	14415399.09	39°41'38.2189"N	80°44'15.4013"W	3.23	268.362	0.27	0.20	53.77
1678.00	0.210	76.380	1677.99	1.79	-0.08	-3.06	1714226.04	14415399.10	39°41'38.2190"N	80°44'15.3992"W	3.06	268.479	0.18	-0.07	-42.11
1722.00	0.300	110.770	1721.99	1.66	-0.10	-2.87	1714226.23	14415399.08	39°41'38.2188"N	80°44'15.3968"W	2.88	267.945	0.39	0.20	78.16
1766.00	0.440	108.700	1765.99	1.43	-0.20	-2.61	1714226.49	14415398.98	39°41'38.2179"N	80°44'15.3934"W	2.61	265.653	0.32	0.32	-4.70
1810.00	0.400	98.290	1809.99	1.18	-0.27	-2.29	1714226.81	14415398.91	39°41'38.2171"N	80°44'15.3894"W	2.31	263.179	0.20	-0.09	-23.66
1854.00	0.460	106.540	1853.98	0.92	-0.35	-1.97	1714227.13	14415398.83	39°41'38.2164"N	80°44'15.3853"W	2.00	260.029	0.20	0.14	18.75
1897.00	0.290	56.360	1896.98	0.78	-0.34	-1.72	1714227.38	14415398.84	39°41'38.2165"N	80°44'15.3820"W	1.75	258.936	0.82	-0.40	-116.70
1940.00	0.530	356.620	1939.98	0.93	-0.08	-1.64	1714227.46	14415399.10	39°41'38.2190"N	80°44'15.3810"W	1.64	267.312	1.07	0.56	-138.93
1984.00	0.560	352.790	1983.98	1.29	0.34	-1.68	1714227.42	14415399.52	39°41'38.2232"N	80°44'15.3815"W	1.71	281.447	0.11	0.07	-8.70
2028.00	0.530	2.550	2027.98	1.63	0.76	-1.69	1714227.41	14415399.94	39°41'38.2273"N	80°44'15.3817"W	1.86	294.044	0.22	-0.07	22.18
2072.00	0.760	21.500	2071.98	1.94	1.23	-1.58	1714227.52	14415400.41	39°41'38.2320"N	80°44'15.3802"W	2.00	307.942	0.71	0.52	43.07
2116.00	0.660	7.390	2115.97	2.27	1.75	-1.44	1714227.66	14415400.93	39°41'38.2371"N	80°44'15.3784"W	2.27	320.624	0.46	-0.23	-32.07
2160.00	0.760	16.320	2159.97	2.62	2.29	-1.32	1714227.78	14415401.46	39°41'38.2424"N	80°44'15.3769"W	2.64	329.898	0.34	0.23	20.30
2204.00	0.750	13.900	2203.96	2.97	2.84	-1.17	1714227.93	14415402.02	39°41'38.2479"N	80°44'15.3749"W	3.08	337.582	0.08	-0.02	-5.50
2248.00	0.730	353.170	2247.96	3.39	3.40	-1.14	1714227.96	14415402.58	39°41'38.2534"N	80°44'15.3744"W	3.59	341.511	0.61	-0.05	-47.11
2292.00	0.560	338.730	2291.96	3.84	3.88	-1.25	1714227.85	14415403.06	39°41'38.2582"N	80°44'15.3759"W	4.08	342.161	0.53	-0.39	-32.82
2337.00	0.520	334.770	2336.96	4.25	4.27	-1.42	1714227.68	14415403.45	39°41'38.2620"N	80°44'15.3780"W	4.50	341.659	0.12	-0.09	-8.80
2381.00	0.560	304.740	2380.95	4.65	4.57	-1.68	1714227.42	14415403.75	39°41'38.2650"N	80°44'15.3813"W	4.87	339.858	0.64	0.09	-68.25
2425.00	0.750	267.950	2424.95	5.02	4.69	-2.14	1714226.96	14415403.86	39°41'38.2661"N	80°44'15.3872"W	5.15	335.434	1.02	0.43	-83.61
2469.00	0.900	251.650	2468.95	5.30	4.57	-2.76	1714226.34	14415403.75	39°41'38.2650"N	80°44'15.3951"W	5.34	328.874	0.63	0.34	-37.05
2513.00	0.970	252.410	2512.94	5.54	4.35	-3.44	1714225.66	14415403.52	39°41'38.2628"N	80°44'15.4039"W	5.54	321.629	0.16	0.16	1.73
2556.00	0.230	220.250	2555.94	5.65	4.17	-3.84	1714225.26	14415403.35	39°41'38.2611"N	80°44'15.4090"W	5.67	317.332	1.83	-1.72	-74.79
2600.00	0.450	94.360	2599.94	5.51	4.09	-3.73	1714225.37	14415403.27	39°41'38.2603"N	80°44'15.4076"W	5.53	317.644	1.39	0.50	-286.11
2644.00	0.690	93.680	2643.94	5.22	4.06	-3.29	1714225.81	14415403.24	39°41'38.2600"N	80°44'15.4020"W	5.23	320.961	0.55	0.55	-1.55
2688.00	0.750	96.340	2687.93	4.85	4.01	-2.74	1714226.36	14415403.19	39°41'38.2595"N	80°44'15.3949"W	4.86	325.647	0.16	0.14	6.05





# Actual Wellpath Report

Elmer N-14 HU AWP Proj:29116'



## REFERENCE WELLPATH IDENTIFICATION

Operator	EQT (TUG HILL OPERATING, LLC)	Well	Elmer N-14 HU
Field	Wetzel	API/Legal	
Facility	Elmer Pad	Wellbore	Elmer N-14 HU AWB
Slot	Slot 14		

## WELLPATH DATA (373 stations)

MD [ft]	Inclination [°]	Azimuth [°]	TVD [ft]	Vert Sect [ft]	North [ft]	East [ft]	Grid East [US ft]	Grid North [US ft]	Latitude	Longitude	Closure Dist [ft]	Closure Dir [°]	DLS [°/100ft]	Build Rate [°/100ft]	Turn Rate [°/100ft]
2732.00	0.880	100.630	2731.93	4.40	3.92	-2.12	1714226.98	14415403.09	39°41'38.2585"N	80°44'15.3870"W	4.45	331.540	0.33	0.30	9.75
2776.00	0.880	104.770	2775.92	3.88	3.77	-1.46	1714227.64	14415402.95	39°41'38.2570"N	80°44'15.3786"W	4.04	338.765	0.14	0.00	9.41
2820.00	1.010	111.050	2819.92	3.29	3.54	-0.78	1714228.32	14415402.72	39°41'38.2548"N	80°44'15.3698"W	3.63	347.652	0.38	0.30	14.27
2864.00	0.770	101.280	2863.91	2.73	3.35	-0.12	1714228.98	14415402.52	39°41'38.2528"N	80°44'15.3615"W	3.35	357.884	0.64	-0.55	-22.20
2909.00	0.210	98.240	2908.91	2.45	3.27	0.25	1714229.35	14415402.45	39°41'38.2521"N	80°44'15.3566"W	3.28	4.445	1.25	-1.24	-6.76
2953.00	0.290	61.760	2952.91	2.37	3.32	0.43	1714229.53	14415402.49	39°41'38.2525"N	80°44'15.3544"W	3.34	7.431	0.40	0.18	-82.91
2979.00	0.200	68.830	2978.91	2.35	3.36	0.53	1714229.63	14415402.54	39°41'38.2530"N	80°44'15.3531"W	3.40	9.001	0.36	-0.35	-27.19
3039.00	0.260	44.560	3038.91	2.34	3.50	0.73	1714229.83	14415402.68	39°41'38.2543"N	80°44'15.3506"W	3.57	11.724	0.19	0.10	-40.45
3083.00	0.210	78.040	3082.91	2.32	3.59	0.87	1714229.97	14415402.76	39°41'38.2552"N	80°44'15.3487"W	3.69	13.711	0.33	-0.11	76.09
3127.00	0.500	216.280	3126.91	2.23	3.45	0.84	1714229.94	14415402.63	39°41'38.2538"N	80°44'15.3491"W	3.55	13.694	1.53	0.66	314.18
3172.00	1.240	230.510	3171.90	2.16	2.98	0.35	1714229.45	14415402.16	39°41'38.2492"N	80°44'15.3555"W	3.00	6.664	1.70	1.64	31.62
3216.00	2.030	255.010	3215.88	2.44	2.48	-0.77	1714228.33	14415401.65	39°41'38.2442"N	80°44'15.3698"W	2.59	342.677	2.36	1.80	55.68
3260.00	2.780	263.250	3259.85	3.28	2.15	-2.58	1714226.52	14415401.33	39°41'38.2411"N	80°44'15.3930"W	3.36	309.735	1.87	1.70	18.73
3304.00	3.250	269.790	3303.79	4.57	2.02	-4.89	1714224.21	14415401.20	39°41'38.2399"N	80°44'15.4225"W	5.29	292.423	1.32	1.07	14.86
3348.00	3.480	275.140	3347.71	6.23	2.13	-7.47	1714221.63	14415401.31	39°41'38.2411"N	80°44'15.4555"W	7.77	285.942	0.88	0.52	12.16
3392.00	3.620	287.860	3391.63	8.27	2.68	-10.12	1714218.98	14415401.86	39°41'38.2465"N	80°44'15.4894"W	10.47	284.827	1.81	0.32	28.91
3436.00	3.710	290.890	3435.54	10.63	3.61	-12.77	1714216.33	14415402.79	39°41'38.2558"N	80°44'15.5233"W	13.27	285.793	0.49	0.20	6.89
3480.00	3.870	292.810	3479.44	13.13	4.70	-15.47	1714213.63	14415403.87	39°41'38.2666"N	80°44'15.5578"W	16.17	286.884	0.46	0.36	4.36
3524.00	4.040	295.860	3523.33	15.80	5.95	-18.24	1714210.87	14415405.13	39°41'38.2791"N	80°44'15.5931"W	19.18	288.065	0.61	0.39	6.93
3568.00	4.200	296.090	3567.22	18.62	7.33	-21.08	1714208.03	14415406.51	39°41'38.2928"N	80°44'15.6294"W	22.32	289.182	0.37	0.36	0.52
3612.00	3.460	299.450	3611.12	21.29	8.69	-23.68	1714205.43	14415407.87	39°41'38.3064"N	80°44'15.6626"W	25.23	290.160	1.76	-1.68	7.64
3656.00	3.300	303.060	3655.05	23.70	10.04	-25.90	1714203.21	14415409.21	39°41'38.3197"N	80°44'15.6909"W	27.77	291.185	0.60	-0.36	8.20
3700.00	3.340	305.440	3698.97	26.12	11.47	-28.00	1714201.11	14415410.65	39°41'38.3339"N	80°44'15.7178"W	30.26	292.276	0.33	0.09	5.41
3744.00	3.480	306.930	3742.89	28.63	13.02	-30.12	1714199.00	14415412.19	39°41'38.3493"N	80°44'15.7448"W	32.81	293.376	0.38	0.32	3.39
3788.00	2.770	306.000	3786.83	30.93	14.44	-32.04	1714197.07	14415413.62	39°41'38.3634"N	80°44'15.7694"W	35.15	294.265	1.62	-1.61	-2.11
3832.00	2.630	307.140	3830.78	32.93	15.68	-33.71	1714195.41	14415414.85	39°41'38.3757"N	80°44'15.7906"W	37.18	294.945	0.34	-0.32	2.59
3876.00	2.590	305.880	3874.73	34.85	16.87	-35.32	1714193.80	14415416.04	39°41'38.3875"N	80°44'15.8112"W	39.14	295.533	0.16	-0.09	-2.86
3920.00	2.170	294.050	3918.70	36.53	17.79	-36.88	1714192.23	14415416.97	39°41'38.3967"N	80°44'15.8312"W	40.95	295.753	1.46	-0.95	-26.89
3964.00	2.140	290.750	3962.67	37.96	18.42	-38.41	1714190.70	14415417.60	39°41'38.4029"N	80°44'15.8507"W	42.60	295.623	0.29	-0.07	-7.50
4008.00	2.080	291.170	4006.64	39.34	19.00	-39.93	1714189.19	14415418.18	39°41'38.4087"N	80°44'15.8701"W	44.22	295.452	0.14	-0.14	0.95





RECEIVED  
Office Of Oil and Gas

OCT 02 2024

WV Department of

# Actual Wellpath Report

Elmer N-14 HU AWP Proj:29116'

Page 5 of 16



## REFERENCE WELLPATH IDENTIFICATION

Operator	EQT (TUG HILL OPERATING, LLC)	Well	Elmer N-14 HU
Field	Weitzel	API/Legal	
Facility	Elmer Pad	Wellbore	Elmer N-14 HU AWB
Slot	Slot 14		

## WELLPATH DATA (373 stations)

MD [ft]	Inclination [°]	Azimuth [°]	TVD [ft]	Vert Sect [ft]	North [ft]	East [ft]	Grid East [US ft]	Grid North [US ft]	Latitude	Longitude	Closure Dist [ft]	Closure Dir [°]	DLS [°/100ft]	Build Rate [°/100ft]	Turn Rate [°/100ft]
4052.00	2.310	290.200	4050.60	40.77	19.60	-41.50	1714187.61	14415418.77	39°41'38.4146"N	80°44'15.8902"W	45.90	295.277	0.53	0.52	-2.20
4096.00	2.550	291.150	4094.56	42.36	20.26	-43.25	1714185.87	14415419.43	39°41'38.4212"N	80°44'15.9125"W	47.76	295.098	0.55	0.55	2.16
4140.00	2.480	291.620	4138.52	44.01	20.96	-45.05	1714184.07	14415420.13	39°41'38.4282"N	80°44'15.9355"W	49.68	294.954	0.17	-0.16	1.07
4184.00	2.520	294.450	4182.48	45.68	21.71	-46.81	1714182.31	14415420.88	39°41'38.4357"N	80°44'15.9580"W	51.60	294.883	0.29	0.09	6.43
4228.00	2.480	298.690	4226.44	47.40	22.57	-48.53	1714180.59	14415421.74	39°41'38.4442"N	80°44'15.9800"W	53.52	294.943	0.43	-0.09	9.64
4272.00	2.500	299.070	4270.40	49.15	23.49	-50.20	1714178.92	14415422.66	39°41'38.4534"N	80°44'16.0013"W	55.43	295.078	0.06	0.05	0.86
4316.00	2.380	303.080	4314.36	50.89	24.46	-51.80	1714177.32	14415423.63	39°41'38.4630"N	80°44'16.0218"W	57.29	295.272	0.47	-0.27	9.11
4360.00	1.010	332.380	4358.34	52.13	25.30	-52.75	1714176.37	14415424.47	39°41'38.4713"N	80°44'16.0339"W	58.50	295.623	3.59	-3.11	66.59
4405.00	0.700	52.950	4403.33	52.52	25.82	-52.71	1714176.41	14415424.99	39°41'38.4764"N	80°44'16.0334"W	58.70	296.093	2.51	-0.69	179.04
4449.00	1.080	80.090	4447.33	52.33	26.05	-52.09	1714177.03	14415425.22	39°41'38.4787"N	80°44'16.0254"W	58.24	296.569	1.27	0.86	61.68
4493.00	1.360	93.640	4491.32	51.80	26.09	-51.16	1714177.96	14415425.26	39°41'38.4791"N	80°44'16.0135"W	57.43	297.018	0.91	0.64	30.80
4537.00	1.360	112.470	4535.31	51.00	25.86	-50.16	1714178.96	14415425.03	39°41'38.4767"N	80°44'16.0007"W	56.43	297.270	1.01	0.00	42.80
4581.00	1.590	127.090	4579.29	49.96	25.29	-49.19	1714179.93	14415424.46	39°41'38.4711"N	80°44'15.9883"W	55.31	297.208	1.00	0.52	33.23
4625.00	2.040	152.690	4623.27	48.60	24.22	-48.34	1714180.78	14415423.39	39°41'38.4606"N	80°44'15.9775"W	54.07	296.615	2.08	1.02	58.18
4669.00	2.240	168.620	4667.24	47.06	22.69	-47.81	1714181.31	14415421.86	39°41'38.4453"N	80°44'15.9708"W	52.92	295.382	1.42	0.45	36.20
4713.00	2.050	185.670	4711.21	45.71	21.06	-47.72	1714181.40	14415420.23	39°41'38.4293"N	80°44'15.9697"W	52.16	293.811	1.51	-0.43	38.75
4757.00	2.220	209.040	4755.18	44.79	19.53	-48.21	1714180.91	14415418.70	39°41'38.4142"N	80°44'15.9761"W	52.02	292.052	2.00	0.39	53.11
4801.00	2.230	232.810	4799.15	44.46	18.27	-49.31	1714179.81	14415417.44	39°41'38.4017"N	80°44'15.9901"W	52.58	290.329	2.08	0.02	54.02
4845.00	2.260	260.580	4843.11	44.87	17.61	-50.85	1714178.27	14415416.78	39°41'38.3953"N	80°44'16.0098"W	53.81	289.101	2.45	0.07	63.11
4889.00	2.170	287.040	4887.08	45.95	17.71	-52.50	1714176.62	14415416.88	39°41'38.3963"N	80°44'16.0310"W	55.41	288.642	2.31	-0.20	60.14
4933.00	2.220	300.800	4931.05	47.42	18.39	-54.03	1714175.09	14415417.56	39°41'38.4031"N	80°44'16.0505"W	57.07	288.799	1.20	0.11	31.27
4977.00	2.340	304.540	4975.02	49.07	19.34	-55.50	1714173.62	14415418.51	39°41'38.4125"N	80°44'16.0693"W	58.77	289.209	0.43	0.27	8.50
5021.00	2.500	305.690	5018.98	50.84	20.41	-57.02	1714172.10	14415419.58	39°41'38.4231"N	80°44'16.0887"W	60.56	289.691	0.38	0.36	2.61
5062.00	2.600	308.180	5059.94	52.59	21.50	-58.48	1714170.65	14415420.67	39°41'38.4340"N	80°44'16.1073"W	62.30	290.189	0.36	0.24	6.07
5115.99	2.620	305.660	5113.87	54.96	22.98	-60.44	1714168.68	14415422.15	39°41'38.4486"N	80°44'16.1324"W	64.66	290.816	0.22	0.04	-4.67
5209.99	1.620	320.310	5207.80	58.34	25.25	-63.04	1714166.09	14415424.42	39°41'38.4712"N	80°44'16.1655"W	67.91	291.833	1.20	-1.06	15.59
5302.99	0.390	133.840	5300.79	59.34	26.05	-63.65	1714165.48	14415425.22	39°41'38.4790"N	80°44'16.1733"W	68.77	292.256	2.16	-1.32	186.59
5397.99	1.590	145.720	5395.78	57.71	24.73	-62.67	1714166.45	14415423.90	39°41'38.4660"N	80°44'16.1608"W	67.38	291.537	1.27	1.26	12.51
5491.99	0.670	153.150	5489.76	55.87	23.17	-61.69	1714167.44	14415422.34	39°41'38.4505"N	80°44'16.1483"W	65.89	290.582	0.99	-0.98	7.90
5585.99	0.280	28.580	5583.76	55.42	22.88	-61.33	1714167.79	14415422.05	39°41'38.4476"N	80°44'16.1437"W	65.46	290.456	0.92	-0.41	-132.52





RECEIVED  
Office Of Oil and Gas

OCT 02 2024

WV Department of  
Environmental Protection

# Actual Wellpath Report

Elmer N-14 HU AWP Proj:29116'

Page 6 of 16



## REFERENCE WELLPATH IDENTIFICATION

Operator	EQT (TUG HILL OPERATING, LLC)	Well	Elmer N-14 HU
Field	Wetzel	API/Legal	
Facility	Elmer Pad	Wellbore	Elmer N-14 HU AWB
Slot	Slot 14		

## WELLPATH DATA (373 stations)

MD [ft]	Inclination [°]	Azimuth [°]	TVD [ft]	Vert Sect [ft]	North [ft]	East [ft]	Grid East [US ft]	Grid North [US ft]	Latitude	Longitude	Closure Dist [ft]	Closure Dir [°]	DLS [°/100ft]	Build Rate [°/100ft]	Turn Rate [°/100ft]
5679.99	1.260	8.550	5677.75	56.23	24.10	-61.07	1714168.06	14415423.27	39°41'38.4597"N	80°44'16.1403"W	65.65	291.537	1.07	1.04	-21.31
5772.99	1.500	19.270	5770.72	57.61	26.26	-60.51	1714168.61	14415425.43	39°41'38.4810"N	80°44'16.1332"W	65.97	293.459	0.38	0.26	11.53
5866.99	1.170	4.470	5864.70	59.00	28.38	-60.03	1714169.09	14415427.55	39°41'38.5020"N	80°44'16.1269"W	66.40	295.301	0.50	-0.35	-15.74
5960.99	0.840	355.030	5958.68	60.30	30.02	-60.02	1714169.11	14415429.19	39°41'38.5182"N	80°44'16.1267"W	67.11	296.575	0.39	-0.35	-10.04
6054.99	0.890	2.570	6052.67	61.44	31.44	-60.04	1714169.08	14415430.61	39°41'38.5322"N	80°44'16.1270"W	67.78	297.636	0.13	0.05	8.02
6148.99	0.550	272.890	6146.67	62.29	32.19	-60.46	1714168.66	14415431.36	39°41'38.5396"N	80°44'16.1323"W	68.50	298.031	1.11	-0.36	-95.40
6241.99	0.830	243.630	6239.66	62.71	31.91	-61.51	1714167.61	14415431.08	39°41'38.5369"N	80°44'16.1457"W	69.30	297.421	0.47	0.30	-31.46
6335.99	1.100	247.370	6333.65	63.07	31.26	-62.95	1714166.17	14415430.43	39°41'38.5306"N	80°44'16.1642"W	70.29	296.409	0.29	0.29	3.98
6429.99	0.470	349.790	6427.64	63.64	31.30	-63.86	1714165.27	14415430.46	39°41'38.5309"N	80°44'16.1757"W	71.11	296.110	1.37	-0.67	108.96
6523.99	0.700	3.700	6521.63	64.42	32.25	-63.89	1714165.24	14415431.42	39°41'38.5403"N	80°44'16.1761"W	71.56	296.784	0.29	0.24	14.80
6617.99	1.180	259.240	6615.63	65.28	32.64	-64.80	1714164.33	14415431.81	39°41'38.5442"N	80°44'16.1878"W	72.56	296.735	1.61	0.51	-111.13
6711.99	1.870	262.340	6709.59	66.48	32.26	-67.27	1714161.86	14415431.42	39°41'38.5405"N	80°44'16.2194"W	74.60	295.617	0.74	0.73	3.30
6836.99	0.760	238.920	6834.56	67.58	31.56	-70.00	1714159.12	14415430.72	39°41'38.5336"N	80°44'16.2544"W	76.79	294.265	0.97	-0.89	-18.74
7086.99	1.920	300.690	7084.50	71.65	32.84	-75.02	1714154.11	14415432.00	39°41'38.5465"N	80°44'16.3186"W	81.90	293.638	0.68	0.46	24.71
7180.99	1.180	286.240	7178.46	73.89	33.91	-77.31	1714151.82	14415433.08	39°41'38.5571"N	80°44'16.3477"W	84.42	293.685	0.88	-0.79	-15.37
7275.99	2.370	235.870	7273.42	74.79	33.08	-79.87	1714149.26	14415432.25	39°41'38.5490"N	80°44'16.3806"W	86.45	292.499	1.95	1.25	-53.02
7369.99	4.310	232.750	7367.25	74.91	29.85	-84.29	1714144.84	14415429.02	39°41'38.5172"N	80°44'16.4373"W	89.42	289.503	2.07	2.06	-3.32
7464.99	6.920	234.070	7461.79	75.06	24.33	-91.77	1714137.37	14415423.50	39°41'38.4629"N	80°44'16.5331"W	94.94	284.851	2.75	2.75	1.39
7557.98	8.050	235.460	7553.99	75.53	17.36	-101.67	1714127.47	14415416.53	39°41'38.3942"N	80°44'16.6600"W	103.14	279.687	1.23	1.22	1.49
7651.98	8.370	236.080	7647.02	76.27	9.81	-112.77	1714116.37	14415408.98	39°41'38.3199"N	80°44'16.8023"W	113.20	274.970	0.35	0.34	0.66
7744.98	9.650	235.650	7738.87	77.09	1.63	-124.82	1714104.33	14415400.81	39°41'38.2395"N	80°44'16.9568"W	124.83	270.748	1.38	1.38	-0.46
7838.98	11.700	236.170	7831.24	78.10	-8.12	-139.25	1714089.91	14415391.06	39°41'38.1435"N	80°44'17.1416"W	139.48	266.662	2.18	2.18	0.55
7932.98	13.950	238.700	7922.89	79.90	-19.32	-156.85	1714072.31	14415379.87	39°41'38.0334"N	80°44'17.3672"W	158.03	262.979	2.47	2.39	2.69
8026.98	15.910	240.030	8013.71	82.76	-31.64	-177.69	1714051.48	14415367.55	39°41'37.9122"N	80°44'17.6344"W	180.49	259.904	2.12	2.09	1.41
8120.98	18.180	240.440	8103.58	86.42	-45.31	-201.61	1714027.57	14415353.89	39°41'37.7778"N	80°44'17.9409"W	206.64	257.333	2.42	2.41	0.44
8216.98	19.650	240.880	8194.39	90.79	-60.56	-228.74	1714000.45	14415338.65	39°41'37.6279"N	80°44'18.2885"W	236.62	255.172	1.54	1.53	0.46
8311.98	21.610	241.400	8283.30	95.76	-76.71	-258.06	1713971.15	14415322.50	39°41'37.4691"N	80°44'18.6641"W	269.22	253.446	2.07	2.06	0.55
8405.98	22.590	241.230	8370.39	101.11	-93.68	-289.08	1713940.13	14415305.54	39°41'37.3023"N	80°44'19.0616"W	303.88	252.044	1.04	1.04	-0.18
8499.98	25.270	241.290	8456.30	106.84	-112.01	-322.51	1713906.72	14415287.21	39°41'37.1221"N	80°44'19.4899"W	341.41	250.847	2.85	2.85	0.06
8592.98	27.580	241.080	8539.58	113.01	-131.96	-358.77	1713870.47	14415267.27	39°41'36.9260"N	80°44'19.9545"W	382.27	249.806	2.49	2.48	-0.23





RECEIVED  
Office Of Oil and Gas  
OCT 02 2024  
WV Department of  
Environmental Protection

# Actual Wellpath Report

Elmer N-14 HU AWP Proj:29116'  
Page 7 of 16



## REFERENCE WELLPATH IDENTIFICATION

Operator	EQT (TUG HILL OPERATING, LLC)	Well	Elmer N-14 HU
Field	Wetzel	API/Legal	
Facility	Elmer Pad	Wellbore	Elmer N-14 HU AWB
Slot	Slot 14		

## WELLPATH DATA (373 stations)

MD [ft]	Inclination [°]	Azimuth [°]	TVD [ft]	Vert Sect [ft]	North [ft]	East [ft]	Grid East [US ft]	Grid North [US ft]	Latitude	Longitude	Closure Dist [ft]	Closure Dir [°]	DLS [°/100ft]	Build Rate [°/100ft]	Turn Rate [°/100ft]
8686.98	27.430	240.110	8622.95	119.04	-153.27	-396.59	1713832.67	14415245.97	39°41'36.7164"N	80°44'20.4391"W	425.18	248.869	0.50	-0.16	-1.03
8780.98	27.170	237.950	8706.49	123.87	-175.45	-433.55	1713795.72	14415223.80	39°41'36.4983"N	80°44'20.9128"W	467.71	247.967	1.09	-0.28	-2.30
8875.98	28.010	237.250	8790.68	127.69	-199.03	-470.70	1713758.59	14415200.23	39°41'36.2663"N	80°44'21.3889"W	511.05	247.079	0.95	0.88	-0.74
8968.98	30.330	238.730	8871.88	131.96	-223.04	-509.14	1713720.16	14415176.23	39°41'36.0302"N	80°44'21.8815"W	555.85	246.343	2.61	2.49	1.59
9061.98	30.640	242.360	8952.03	138.48	-246.22	-550.21	1713679.11	14415153.06	39°41'35.8022"N	80°44'22.4078"W	602.79	245.891	2.01	0.33	3.90
9155.98	32.190	243.950	9032.25	147.46	-268.33	-593.92	1713635.41	14415130.95	39°41'35.5850"N	80°44'22.9678"W	651.73	245.687	1.87	1.65	1.69
9248.98	33.880	244.600	9110.22	157.71	-290.33	-639.60	1713589.75	14415108.96	39°41'35.3689"N	80°44'23.5530"W	702.41	245.585	1.86	1.82	0.70
9341.98	34.490	246.040	9187.15	169.22	-312.14	-687.08	1713542.29	14415087.16	39°41'35.1547"N	80°44'24.1611"W	754.66	245.567	1.09	0.66	1.55
9427.98	34.460	245.990	9258.05	180.50	-331.93	-731.55	1713497.83	14415067.38	39°41'34.9604"N	80°44'24.7308"W	803.34	245.595	0.05	-0.03	-0.06
9473.98	33.320	245.200	9296.23	186.27	-342.53	-754.91	1713474.49	14415056.79	39°41'34.8564"N	80°44'25.0300"W	828.99	245.595	2.66	-2.48	-1.72
9521.98	32.570	245.200	9336.51	191.96	-353.48	-778.61	1713450.80	14415045.84	39°41'34.7488"N	80°44'25.3336"W	855.09	245.583	1.56	-1.56	0.00
9614.98	29.710	243.090	9416.11	201.61	-374.41	-821.89	1713407.53	14415024.92	39°41'34.5432"N	80°44'25.8881"W	903.16	245.509	3.29	-3.08	-2.27
9709.98	28.660	241.860	9499.05	209.55	-395.81	-862.98	1713366.47	14415003.53	39°41'34.3328"N	80°44'26.4144"W	949.42	245.361	1.27	-1.11	-1.29
9803.98	27.740	241.690	9581.89	216.63	-416.82	-902.11	1713327.34	14414982.53	39°41'34.1264"N	80°44'26.9159"W	993.75	245.201	0.98	-0.98	-0.18
9895.98	26.330	239.400	9663.83	222.42	-437.36	-938.53	1713290.94	14414961.99	39°41'33.9244"N	80°44'27.3825"W	1035.43	245.014	1.90	-1.53	-2.49
9990.98	28.180	239.580	9748.28	227.63	-459.44	-976.01	1713253.48	14414939.92	39°41'33.7072"N	80°44'27.8627"W	1078.74	244.792	1.95	1.95	0.19
10084.98	29.710	240.370	9830.54	233.47	-482.20	-1015.40	1713214.10	14414917.17	39°41'33.4834"N	80°44'28.3675"W	1124.08	244.598	1.68	1.63	0.84
10179.98	29.850	240.990	9912.99	240.10	-505.30	-1056.54	1713172.98	14414894.08	39°41'33.2563"N	80°44'28.8946"W	1171.16	244.440	0.36	0.15	0.65
10273.98	29.670	241.160	9994.60	246.96	-527.87	-1097.38	1713132.16	14414871.52	39°41'33.0344"N	80°44'29.4179"W	1217.74	244.311	0.21	-0.19	0.18
10367.98	29.630	241.510	10076.29	254.02	-550.18	-1138.18	1713091.37	14414849.22	39°41'32.8151"N	80°44'29.9406"W	1264.18	244.202	0.19	-0.04	0.37
10461.98	29.270	242.130	10158.14	261.41	-572.00	-1178.92	1713050.65	14414827.40	39°41'32.6006"N	80°44'30.4626"W	1310.36	244.118	0.50	-0.38	0.66
10554.98	29.670	242.130	10239.11	268.98	-593.39	-1219.36	1713010.22	14414806.02	39°41'32.3903"N	80°44'30.9807"W	1356.08	244.051	0.43	0.43	0.00
10648.98	29.050	241.420	10321.03	276.32	-615.19	-1259.97	1712969.63	14414784.24	39°41'32.1761"N	80°44'31.5010"W	1402.13	243.976	0.76	-0.66	-0.76
10743.98	28.570	241.950	10404.28	283.54	-636.90	-1300.27	1712929.34	14414762.53	39°41'31.9626"N	80°44'32.0174"W	1447.88	243.903	0.57	-0.51	0.56
10836.98	27.740	243.710	10486.27	291.32	-656.95	-1339.31	1712890.32	14414742.49	39°41'31.7657"N	80°44'32.5174"W	1491.75	243.871	1.26	-0.89	1.89
10880.00	27.040	245.350	10524.47	295.40	-665.46	-1357.17	1712872.47	14414733.98	39°41'31.6820"N	80°44'32.7463"W	1511.54	243.880	2.39	-1.63	3.81
10973.00	25.980	243.860	10607.69	304.04	-683.25	-1394.67	1712834.98	14414716.20	39°41'31.5073"N	80°44'33.2266"W	1553.04	243.900	1.35	-1.14	-1.60
11066.00	30.560	242.810	10689.58	312.20	-703.04	-1434.01	1712795.66	14414696.42	39°41'31.3128"N	80°44'33.7306"W	1597.07	243.883	4.95	4.92	-1.13
11159.00	31.450	242.980	10769.29	320.76	-724.86	-1476.65	1712753.03	14414674.60	39°41'31.0983"N	80°44'34.2769"W	1644.97	243.854	0.96	0.96	0.18
11252.00	32.300	241.250	10848.27	328.86	-747.84	-1520.05	1712709.65	14414651.64	39°41'30.8725"N	80°44'34.8329"W	1694.05	243.804	1.34	0.91	-1.86





RECEIVED  
Office Of Oil and Gas

OCT 02 2024

WV Department of  
Environmental Protection

# Actual Wellpath Report

Elmer N-14 HU AWP Proj:29116'

Page 8 of 16



## REFERENCE WELLPATH IDENTIFICATION

Operator	EQT (TUG HILL OPERATING, LLC)	Well	Elmer N-14 HU
Field	Wetzel	API/Legal	
Facility	Elmer Pad	Wellbore	Elmer N-14 HU AWB
Slot	Slot 14		

## WELLPATH DATA (373 stations)

MD [ft]	Inclination [°]	Azimuth [°]	TVD [ft]	Vert Sect [ft]	North [ft]	East [ft]	Grid East [US ft]	Grid North [US ft]	Latitude	Longitude	Closure Dist [ft]	Closure Dir [°]	DLS [°/100ft]	Build Rate [°/100ft]	Turn Rate [°/100ft]
11345.00	31.920	240.510	10927.04	335.97	-771.89	-1563.24	1712666.48	14414627.59	39°41'30.6360"N	80°44'35.3863"W	1743.42	243.721	0.59	-0.41	-0.80
11438.00	32.300	241.310	11005.81	343.11	-795.92	-1606.44	1712623.30	14414603.57	39°41'30.3997"N	80°44'35.9397"W	1792.80	243.643	0.61	0.41	0.86
11530.00	30.790	246.150	11084.23	352.34	-817.25	-1649.54	1712580.21	14414582.25	39°41'30.1902"N	80°44'36.4920"W	1840.89	243.644	3.20	-1.64	5.26
11623.00	32.850	258.140	11163.33	368.80	-832.08	-1696.05	1712533.72	14414567.43	39°41'30.0450"N	80°44'37.0874"W	1889.16	243.868	7.14	2.22	12.89
11716.00	35.790	265.590	11240.16	394.49	-839.36	-1747.88	1712481.91	14414560.16	39°41'29.9745"N	80°44'37.7508"W	1938.97	244.349	5.51	3.16	8.01
11809.00	38.730	276.500	11314.25	429.51	-838.15	-1803.98	1712425.84	14414561.36	39°41'29.9880"N	80°44'38.4683"W	1989.18	245.080	7.76	3.16	11.73
11903.00	43.590	287.110	11385.09	476.37	-825.27	-1864.28	1712365.56	14414574.24	39°41'30.1170"N	80°44'39.2392"W	2038.77	246.122	9.04	5.17	11.29
11996.00	49.080	294.570	11449.32	533.57	-801.19	-1926.97	1712302.89	14414598.31	39°41'30.3568"N	80°44'40.0403"W	2086.89	247.424	8.27	5.90	8.02
12089.00	54.520	298.910	11506.83	599.32	-768.24	-1992.14	1712237.75	14414631.25	39°41'30.6842"N	80°44'40.8727"W	2135.14	248.912	6.90	5.85	4.67
12182.00	60.510	305.160	11556.79	672.72	-726.56	-2058.48	1712171.43	14414672.91	39°41'31.0980"N	80°44'41.7199"W	2182.94	250.559	8.58	6.44	6.72
12275.00	65.620	312.920	11598.96	753.24	-674.31	-2122.71	1712107.23	14414725.14	39°41'31.6162"N	80°44'42.5396"W	2227.24	252.377	9.24	5.49	8.34
12368.00	72.640	319.780	11632.10	839.51	-611.43	-2182.52	1712047.44	14414787.99	39°41'32.2392"N	80°44'43.3025"W	2266.55	254.350	10.22	7.55	7.38
12460.00	77.360	326.240	11655.93	928.30	-540.48	-2235.90	1711994.09	14414858.91	39°41'32.9419"N	80°44'43.9827"W	2300.30	256.411	8.50	5.13	7.02
12553.00	82.830	331.000	11671.93	1019.34	-462.31	-2283.54	1711946.46	14414937.06	39°41'33.7159"N	80°44'44.5894"W	2329.87	258.555	7.75	5.88	5.12
12647.00	89.340	331.730	11678.35	1111.98	-380.04	-2328.46	1711901.56	14415019.29	39°41'34.5302"N	80°44'45.1610"W	2359.27	260.730	6.97	6.93	0.78
12739.00	89.430	331.790	11679.33	1202.80	-298.99	-2371.99	1711858.05	14415100.30	39°41'35.3323"N	80°44'45.7149"W	2390.76	262.816	0.12	0.10	0.07
12832.00	90.290	329.980	11679.56	1294.83	-217.75	-2417.24	1711812.82	14415181.52	39°41'36.1365"N	80°44'46.2908"W	2427.02	264.853	2.15	0.92	-1.95
12925.00	90.810	329.330	11678.67	1387.12	-137.49	-2464.22	1711765.86	14415261.74	39°41'36.9310"N	80°44'46.8889"W	2468.05	266.806	0.90	0.56	-0.70
13018.00	90.840	329.660	11677.33	1479.44	-57.38	-2511.42	1711718.67	14415341.83	39°41'37.7241"N	80°44'47.4898"W	2512.08	268.691	0.36	0.03	0.35
13111.00	90.840	329.130	11675.96	1571.78	22.66	-2558.76	1711671.35	14415421.83	39°41'38.5164"N	80°44'48.0926"W	2558.86	270.507	0.57	0.00	-0.57
13205.00	90.840	329.920	11674.59	1665.09	103.67	-2606.43	1711623.70	14415502.80	39°41'39.3183"N	80°44'48.6995"W	2608.49	272.278	0.84	0.00	0.84
13299.00	90.840	329.230	11673.21	1758.38	184.71	-2654.03	1711576.12	14415583.82	39°41'40.1206"N	80°44'49.3054"W	2660.45	273.981	0.73	0.00	-0.73
13392.00	91.090	329.650	11671.64	1850.71	264.78	-2701.31	1711528.86	14415663.86	39°41'40.9132"N	80°44'49.9074"W	2714.25	275.598	0.53	0.27	0.45
13485.00	90.900	329.440	11670.03	1943.01	344.94	-2748.44	1711481.75	14415743.98	39°41'41.7067"N	80°44'50.5074"W	2770.00	277.153	0.30	-0.20	-0.23
13578.00	90.900	329.480	11668.57	2035.34	425.03	-2795.69	1711434.52	14415824.04	39°41'42.4995"N	80°44'51.1090"W	2827.81	278.644	0.04	0.00	0.04
13671.00	90.870	329.530	11667.13	2127.65	505.15	-2842.88	1711387.35	14415904.13	39°41'43.2927"N	80°44'51.7098"W	2887.41	280.076	0.06	-0.03	0.05
13764.00	90.870	328.990	11665.72	2220.02	585.08	-2890.41	1711339.84	14415984.03	39°41'44.0839"N	80°44'52.3150"W	2949.03	281.443	0.58	0.00	-0.58
13857.00	90.900	330.100	11664.28	2312.33	665.23	-2937.54	1711292.72	14416064.15	39°41'44.8774"N	80°44'52.9151"W	3011.92	282.760	1.19	0.03	1.19
13951.00	90.930	329.410	11662.78	2405.58	746.43	-2984.88	1711245.40	14416145.31	39°41'45.6811"N	80°44'53.5178"W	3076.79	284.040	0.73	0.03	-0.73
14044.00	90.940	329.700	11661.26	2497.89	826.59	-3032.00	1711198.30	14416225.45	39°41'46.4747"N	80°44'54.1177"W	3142.65	285.250	0.31	0.01	0.31





OCT 02 2024

WV Department of  
Environmental Protection

# Actual Wellpath Report

Elmer N-14 HU AWP Proj:29116'

Page 9 of 16



## REFERENCE WELLPATH IDENTIFICATION

Operator	EQT (TUG HILL OPERATING, LLC)	Well	Elmer N-14 HU
Field	Wetzel	API/Legal	
Facility	Elmer Pad	Wellbore	Elmer N-14 HU AWB
Slot	Slot 14		

## WELLPATH DATA (373 stations)

MD [ft]	Inclination [°]	Azimuth [°]	TVD [ft]	Vert Sect [ft]	North [ft]	East [ft]	Grid East [US ft]	Grid North [US ft]	Latitude	Longitude	Closure Dist [ft]	Closure Dir [°]	DLS [°/100ft]	Build Rate [°/100ft]	Turn Rate [°/100ft]
14137.00	90.930	329.330	11659.75	2590.20	906.73	-3079.17	1711151.15	14416305.55	39°41'47.2679"N	80°44'54.7183"W	3209.90	286.408	0.40	-0.01	-0.40
14230.00	90.930	329.670	11658.24	2682.52	986.85	-3126.37	1711103.97	14416385.64	39°41'48.0611"N	80°44'55.3192"W	3278.42	287.518	0.37	0.00	0.37
14324.00	90.960	329.810	11656.69	2775.78	1068.03	-3173.73	1711056.63	14416466.79	39°41'48.8647"N	80°44'55.9222"W	3348.62	288.599	0.15	0.03	0.15
14417.00	91.000	330.030	11655.10	2868.01	1148.49	-3220.33	1711010.04	14416547.22	39°41'49.6612"N	80°44'56.5156"W	3419.00	289.628	0.24	0.04	0.24
14510.00	91.060	329.920	11653.42	2960.23	1229.00	-3266.86	1710963.53	14416627.69	39°41'50.4581"N	80°44'57.1079"W	3490.39	290.616	0.13	0.06	-0.12
14604.00	90.940	329.490	11651.78	3053.49	1310.15	-3314.27	1710916.14	14416708.81	39°41'51.2614"N	80°44'57.7116"W	3563.83	291.569	0.47	-0.13	-0.46
14697.00	90.940	329.770	11650.26	3145.78	1390.38	-3361.29	1710869.14	14416789.01	39°41'52.0556"N	80°44'58.3102"W	3637.50	292.472	0.30	0.00	0.30
14791.00	90.930	330.490	11648.72	3238.96	1471.88	-3408.09	1710822.35	14416870.48	39°41'52.8623"N	80°44'58.9061"W	3712.35	293.358	0.77	-0.01	0.77
14884.00	90.960	332.010	11647.19	3330.89	1553.40	-3452.82	1710777.65	14416951.97	39°41'53.6692"N	80°44'59.4754"W	3786.16	294.223	1.63	0.03	1.63
14977.00	90.900	327.100	11645.68	3423.17	1633.54	-3499.92	1710730.56	14417032.08	39°41'54.4625"N	80°45'0.0751"W	3862.37	295.020	5.28	-0.06	-5.28
15070.00	90.930	328.870	11644.19	3515.74	1712.39	-3549.22	1710681.29	14417110.89	39°41'55.2431"N	80°45'0.7030"W	3940.71	295.756	1.90	0.03	1.90
15163.00	91.060	329.490	11642.58	3608.12	1792.24	-3596.86	1710633.67	14417190.71	39°41'56.0336"N	80°45'1.3096"W	4018.65	296.486	0.68	0.14	0.67
15256.00	90.750	330.000	11641.11	3700.39	1872.56	-3643.71	1710586.83	14417271.00	39°41'56.8287"N	80°45'1.9061"W	4096.72	297.199	0.64	-0.33	0.55
15350.00	90.810	329.630	11639.83	3793.63	1953.81	-3690.97	1710539.59	14417352.22	39°41'57.6329"N	80°45'2.5079"W	4176.20	297.894	0.40	0.06	-0.39
15444.00	90.750	329.640	11638.55	3886.92	2034.91	-3738.48	1710492.10	14417433.28	39°41'58.4357"N	80°45'3.1128"W	4256.42	298.560	0.06	-0.06	0.01
15537.00	90.620	329.510	11637.44	3979.23	2115.09	-3785.57	1710445.02	14417513.44	39°41'59.2295"N	80°45'3.7125"W	4336.38	299.193	0.20	-0.14	-0.14
15630.00	90.590	329.730	11636.46	4071.53	2195.32	-3832.60	1710398.01	14417593.63	39°42'0.0236"N	80°45'4.3113"W	4416.82	299.804	0.24	-0.03	0.24
15722.00	90.780	329.720	11635.36	4162.81	2274.77	-3878.98	1710351.65	14417673.05	39°42'0.8100"N	80°45'4.9019"W	4496.78	300.389	0.21	0.21	-0.01
15815.00	90.720	328.910	11634.14	4255.17	2354.74	-3926.44	1710304.22	14417752.99	39°42'1.6017"N	80°45'5.5062"W	4578.40	300.952	0.87	-0.06	-0.87
15908.00	90.930	329.610	11632.80	4347.53	2434.66	-3973.97	1710256.70	14417832.88	39°42'2.3928"N	80°45'6.1115"W	4660.47	301.494	0.79	0.23	0.75
16000.00	90.870	329.470	11631.36	4438.85	2513.95	-4020.60	1710210.09	14417912.14	39°42'3.1778"N	80°45'6.7053"W	4741.86	302.016	0.17	-0.07	-0.15
16093.00	90.900	329.800	11629.92	4531.14	2594.19	-4067.61	1710163.10	14417992.34	39°42'3.9720"N	80°45'7.3038"W	4824.44	302.528	0.36	0.03	0.35
16187.00	90.900	329.560	11628.44	4624.41	2675.32	-4115.06	1710115.67	14418073.44	39°42'4.7751"N	80°45'7.9080"W	4908.26	303.029	0.26	0.00	-0.26
16279.00	90.350	329.580	11627.44	4715.73	2754.64	-4161.65	1710069.10	14418152.73	39°42'5.5603"N	80°45'8.5013"W	4990.73	303.501	0.60	-0.60	0.02
16372.00	90.680	330.040	11626.60	4807.99	2835.02	-4208.41	1710022.35	14418233.08	39°42'6.3559"N	80°45'9.0968"W	5074.26	303.966	0.61	0.35	0.49
16466.00	90.590	330.010	11625.56	4901.20	2916.45	-4255.38	1709975.41	14418314.47	39°42'7.1619"N	80°45'9.6948"W	5158.86	304.425	0.10	-0.10	-0.03
16559.00	90.440	329.580	11624.73	4993.46	2996.82	-4302.16	1709928.64	14418394.81	39°42'7.9575"N	80°45'10.2905"W	5243.04	304.860	0.49	-0.16	-0.46
16652.00	90.530	329.610	11623.94	5085.77	3077.02	-4349.23	1709881.59	14418474.98	39°42'8.7514"N	80°45'10.8899"W	5327.65	305.279	0.10	0.10	0.03
16744.00	90.280	329.550	11623.29	5177.09	3156.36	-4395.81	1709835.03	14418554.29	39°42'9.5367"N	80°45'11.4830"W	5411.63	305.680	0.28	-0.27	-0.07
16837.00	90.350	329.670	11622.78	5269.39	3236.58	-4442.86	1709788.00	14418634.48	39°42'10.3308"N	80°45'12.0821"W	5496.76	306.073	0.15	0.08	0.13





OCT 02 2024

# Actual Wellpath Report

Elmer N-14 HU AWP Proj:29116'  
Page 10 of 16



## REFERENCE WELLPATH IDENTIFICATION

Operator	EQT (TUG HILL OPERATING, LLC)	Well	Elmer N-14 HU
Field	Weitzel	API/Legal	
Facility	Elmer Pad	Wellbore	Elmer N-14 HU AWB
Slot	Slot 14		

## WELLPATH DATA (373 stations)

MD [ft]	Inclination [°]	Azimuth [°]	TVD [ft]	Vert Sect [ft]	North [ft]	East [ft]	Grid East [US ft]	Grid North [US ft]	Latitude	Longitude	Closure Dist [ft]	Closure Dir [°]	DLS [°/100ft]	Build Rate [°/100ft]	Turn Rate [°/100ft]
16931.00	90.500	329.670	11622.08	5362.68	3317.71	-4490.32	1709740.55	14418715.58	39°42'11.1339"N	80°45'12.6866"W	5583.03	306.459	0.16	0.16	0.00
17023.00	90.410	329.980	11621.35	5453.95	3397.24	-4536.56	1709694.33	14418795.07	39°42'11.9211"N	80°45'13.2754"W	5667.60	306.828	0.35	-0.10	0.34
17116.00	90.350	329.280	11620.73	5546.25	3477.48	-4583.58	1709647.33	14418875.28	39°42'12.7154"N	80°45'13.8742"W	5753.44	307.187	0.76	-0.06	-0.75
17209.00	90.320	329.590	11620.19	5638.59	3557.55	-4630.87	1709600.06	14418955.32	39°42'13.5080"N	80°45'14.4764"W	5839.62	307.532	0.33	-0.03	0.33
17301.00	90.350	329.750	11619.65	5729.89	3636.96	-4677.33	1709553.62	14419034.70	39°42'14.2940"N	80°45'15.0680"W	5924.94	307.868	0.18	0.03	0.17
17394.00	90.350	329.860	11619.08	5822.15	3717.34	-4724.10	1709506.87	14419115.05	39°42'15.0897"N	80°45'15.6637"W	6011.30	308.199	0.12	0.00	0.12
17486.00	90.350	329.780	11618.52	5913.42	3796.87	-4770.35	1709460.63	14419194.54	39°42'15.8769"N	80°45'16.2526"W	6096.92	308.517	0.09	0.00	-0.09
17581.00	90.350	329.640	11617.94	6007.69	3878.90	-4818.27	1709412.74	14419276.54	39°42'16.6889"N	80°45'16.8628"W	6185.59	308.835	0.15	0.00	-0.15
17674.00	90.310	329.810	11617.40	6099.98	3959.21	-4865.15	1709365.87	14419356.82	39°42'17.4839"N	80°45'17.4599"W	6272.56	309.138	0.19	-0.04	0.18
17767.00	90.310	329.500	11616.90	6192.27	4039.47	-4912.14	1709318.91	14419437.05	39°42'18.2783"N	80°45'18.0582"W	6359.75	309.432	0.33	0.00	-0.33
17861.00	90.350	329.830	11616.36	6285.56	4120.60	-4959.61	1709271.45	14419518.15	39°42'19.0814"N	80°45'18.6628"W	6448.03	309.721	0.35	0.04	0.35
17954.00	90.280	329.870	11615.85	6377.82	4201.01	-5006.32	1709224.76	14419598.53	39°42'19.8774"N	80°45'19.2576"W	6535.42	310.001	0.09	-0.08	0.04
18047.00	90.870	329.930	11614.91	6470.06	4281.47	-5052.96	1709178.14	14419678.95	39°42'20.6738"N	80°45'19.8515"W	6622.94	310.275	0.64	0.63	0.06
18139.00	90.870	329.820	11613.52	6561.31	4361.03	-5099.13	1709131.99	14419758.49	39°42'21.4613"N	80°45'20.4395"W	6709.67	310.539	0.12	0.00	-0.12
18232.00	90.870	329.610	11612.11	6653.59	4441.33	-5146.02	1709085.11	14419838.75	39°42'22.2562"N	80°45'21.0367"W	6797.57	310.796	0.23	0.00	-0.23
18325.00	90.810	329.720	11610.74	6745.87	4521.59	-5192.99	1709038.17	14419918.98	39°42'23.0506"N	80°45'21.6348"W	6885.63	311.046	0.13	-0.06	0.12
18418.00	90.930	329.580	11609.33	6838.16	4601.84	-5239.97	1708991.20	14419999.20	39°42'23.8449"N	80°45'22.2332"W	6973.82	311.290	0.20	0.13	-0.15
18511.00	90.840	329.770	11607.89	6930.44	4682.10	-5286.92	1708944.27	14420079.43	39°42'24.6394"N	80°45'22.8312"W	7062.13	311.528	0.23	-0.10	0.20
18604.00	90.870	329.870	11606.51	7022.70	4762.49	-5333.67	1708897.54	14420159.78	39°42'25.4351"N	80°45'23.4265"W	7150.48	311.762	0.11	0.03	0.11
18697.00	90.870	329.820	11605.09	7114.95	4842.89	-5380.38	1708850.85	14420240.16	39°42'26.2310"N	80°45'24.0214"W	7238.93	311.990	0.05	0.00	-0.05
18791.00	90.840	329.630	11603.69	7208.21	4924.06	-5427.77	1708803.48	14420321.29	39°42'27.0345"N	80°45'24.6249"W	7328.51	312.214	0.20	-0.03	-0.20
18883.00	90.840	329.870	11602.34	7299.49	5003.53	-5474.11	1708757.16	14420400.73	39°42'27.8210"N	80°45'25.2151"W	7416.28	312.428	0.26	0.00	0.26
18976.00	90.810	329.610	11601.00	7391.76	5083.85	-5520.97	1708710.31	14420481.02	39°42'28.6161"N	80°45'25.8119"W	7505.11	312.640	0.28	-0.03	-0.28
19069.00	90.770	329.680	11599.72	7484.05	5164.09	-5567.96	1708663.34	14420561.23	39°42'29.4104"N	80°45'26.4104"W	7594.08	312.845	0.09	-0.04	0.08
19162.00	90.870	329.680	11598.39	7576.33	5244.36	-5614.91	1708616.41	14420641.47	39°42'30.2049"N	80°45'27.0083"W	7683.13	313.046	0.11	0.11	0.00
19254.00	90.900	329.750	11596.97	7667.62	5323.80	-5661.30	1708570.04	14420720.87	39°42'30.9912"N	80°45'27.5991"W	7771.30	313.240	0.08	0.03	0.08
19347.00	90.870	329.770	11595.53	7759.88	5404.13	-5708.13	1708523.23	14420801.17	39°42'31.7864"N	80°45'28.1956"W	7860.50	313.433	0.04	-0.03	0.02
19440.00	90.870	329.920	11594.12	7852.13	5484.54	-5754.84	1708476.54	14420881.55	39°42'32.5822"N	80°45'28.7905"W	7949.74	313.622	0.16	0.00	0.16
19534.00	90.870	329.950	11592.69	7945.35	5565.88	-5801.93	1708429.47	14420962.86	39°42'33.3874"N	80°45'29.3902"W	8039.99	313.810	0.03	0.00	0.03
19627.00	90.870	329.700	11591.28	8037.61	5646.27	-5848.67	1708382.75	14421043.21	39°42'34.1831"N	80°45'29.9855"W	8129.41	313.991	0.27	0.00	-0.27





# Actual Wellpath Report

Elmer N-14 HU AWP Proj:29116'

Page 11 of 16



## REFERENCE WELLPATH IDENTIFICATION

Operator	EQT (TUG HILL OPERATING, LLC)	Well	Elmer N-14 HU
Field	Weizel	API/Legal	
Facility	Elmer Pad	Wellbore	Elmer N-14 HU AWB
Slot	Slot 14		

## WELLPATH DATA (373 stations)

MD [ft]	Inclination [°]	Azimuth [°]	TVD [ft]	Vert Sect [ft]	North [ft]	East [ft]	Grid East [US ft]	Grid North [US ft]	Latitude	Longitude	Closure Dist [ft]	Closure Dir [°]	DLS [°/100ft]	Build Rate [°/100ft]	Turn Rate [°/100ft]
19720.00	90.900	329.700	11589.85	8129.88	5726.56	-5895.58	1708335.85	14421123.47	39°42'34.9778"N	80°45'30.5830"W	8218.96	314.167	0.03	0.03	0.00
19812.00	90.830	329.960	11588.46	8221.14	5806.08	-5941.82	1708289.64	14421202.97	39°42'35.7650"N	80°45'31.1718"W	8307.57	314.338	0.29	-0.08	0.28
19905.00	90.770	330.130	11587.16	8313.35	5886.65	-5988.25	1708243.22	14421283.50	39°42'36.5625"N	80°45'31.7632"W	8397.13	314.510	0.19	-0.06	0.18
19998.00	90.870	329.890	11585.83	8405.57	5967.19	-6034.73	1708196.76	14421364.01	39°42'37.3597"N	80°45'32.3552"W	8486.77	314.678	0.28	0.11	-0.26
20091.00	91.020	329.400	11584.29	8497.86	6047.43	-6081.72	1708149.79	14421444.22	39°42'38.1539"N	80°45'32.9537"W	8576.64	314.838	0.55	0.16	-0.53
20184.00	90.900	329.530	11582.73	8590.18	6127.52	-6128.96	1708102.56	14421524.28	39°42'38.9467"N	80°45'33.5555"W	8666.65	315.146	0.19	-0.13	0.14
20277.00	90.900	329.550	11581.27	8682.49	6207.68	-6176.10	1708055.44	14421604.40	39°42'39.7401"N	80°45'34.1559"W	8756.68	315.146	0.02	0.00	0.02
20370.00	90.590	330.730	11580.06	8774.68	6288.32	-6222.40	1708009.16	14421685.01	39°42'40.5383"N	80°45'34.7456"W	8846.54	315.302	1.31	-0.33	1.27
20463.00	90.830	330.320	11578.91	8866.78	6369.28	-6268.16	1707963.42	14421765.94	39°42'41.3396"N	80°45'35.3283"W	8936.30	315.458	0.51	0.26	-0.44
20556.00	90.740	330.040	11577.64	8958.96	6449.96	-6314.40	1707917.20	14421846.59	39°42'42.1382"N	80°45'35.9172"W	9026.27	315.608	0.32	-0.10	-0.30
20649.00	90.710	330.380	11576.46	9051.14	6530.66	-6360.60	1707871.02	14421927.26	39°42'42.9370"N	80°45'36.5057"W	9116.29	315.756	0.37	-0.03	0.37
20743.00	90.530	330.360	11575.44	9144.27	6612.37	-6407.07	1707824.56	14422008.93	39°42'43.7457"N	80°45'37.0975"W	9207.28	315.903	0.19	-0.19	-0.02
20836.00	90.650	330.860	11574.49	9236.36	6693.39	-6452.71	1707778.94	14422089.92	39°42'44.5476"N	80°45'37.6787"W	9297.25	316.049	0.55	0.13	0.54
20930.00	91.080	330.570	11573.07	9329.41	6775.37	-6498.68	1707732.99	14422171.87	39°42'45.3590"N	80°45'38.2642"W	9388.21	316.194	0.55	0.46	-0.31
21023.00	90.650	330.540	11571.66	9421.51	6856.35	-6544.40	1707687.29	14422252.81	39°42'46.1605"N	80°45'38.8464"W	9478.32	316.334	0.46	-0.46	-0.03
21116.00	90.860	330.370	11570.44	9513.63	6937.25	-6590.25	1707641.46	14422333.68	39°42'46.9612"N	80°45'39.4304"W	9568.53	316.469	0.29	0.23	-0.18
21209.00	90.830	330.100	11569.07	9605.80	7017.97	-6636.42	1707595.31	14422414.37	39°42'47.7602"N	80°45'40.0184"W	9658.88	316.601	0.29	-0.03	-0.29
21302.00	90.680	330.680	11567.84	9697.93	7098.82	-6682.36	1707549.38	14422495.19	39°42'48.5604"N	80°45'40.6036"W	9749.21	316.731	0.64	-0.16	0.62
21396.00	90.770	330.400	11566.65	9791.03	7180.65	-6728.59	1707503.17	14422576.99	39°42'49.3704"N	80°45'41.1923"W	9840.51	316.862	0.31	0.10	-0.30
21489.00	90.620	330.500	11565.52	9883.15	7261.55	-6774.45	1707457.33	14422657.86	39°42'50.1711"N	80°45'41.7764"W	9930.93	316.988	0.19	-0.16	0.11
21582.00	90.620	330.470	11564.52	9975.27	7342.48	-6820.27	1707411.53	14422738.75	39°42'50.9721"N	80°45'42.3599"W	10021.38	317.112	0.03	0.00	-0.03
21675.00	90.710	330.700	11563.44	10067.36	7423.48	-6865.94	1707365.88	14422819.73	39°42'51.7738"N	80°45'42.9416"W	10111.84	317.234	0.27	0.10	0.25
21769.00	90.770	330.420	11562.22	10160.45	7505.34	-6912.14	1707319.70	14422901.55	39°42'52.5840"N	80°45'43.5300"W	10203.32	317.356	0.30	0.06	-0.30
21861.00	90.710	330.340	11561.04	10251.60	7585.31	-6957.60	1707274.25	14422981.49	39°42'53.3755"N	80°45'44.1091"W	10292.97	317.471	0.11	-0.07	-0.09
21954.00	90.740	330.250	11559.86	10343.76	7666.08	-7003.68	1707228.19	14423062.23	39°42'54.1750"N	80°45'44.6960"W	10383.66	317.585	0.10	0.03	-0.10
22047.00	90.770	330.590	11558.63	10435.89	7746.95	-7049.59	1707182.30	14423143.07	39°42'54.9754"N	80°45'45.2807"W	10474.35	317.698	0.37	0.03	0.37
22140.00	90.520	330.490	11557.59	10527.99	7827.92	-7095.32	1707136.58	14423224.01	39°42'55.7768"N	80°45'45.8632"W	10565.04	317.810	0.29	-0.27	-0.11
22233.00	90.860	330.360	11556.47	10620.12	7908.80	-7141.22	1707090.70	14423304.85	39°42'56.5773"N	80°45'46.4479"W	10655.80	317.920	0.39	0.37	-0.14
22326.00	90.770	330.550	11555.14	10712.24	7989.70	-7187.08	1707044.87	14423385.72	39°42'57.3780"N	80°45'47.0319"W	10746.60	318.027	0.23	-0.10	0.20
22419.00	90.770	330.630	11553.89	10804.33	8070.71	-7232.74	1706999.22	14423466.69	39°42'58.1798"N	80°45'47.6135"W	10837.38	318.134	0.09	0.00	0.09





RECEIVED  
Office Of Oil and Gas

OCT 02 2024

WV Department of  
Environmental Protection

# Actual Wellpath Report

Elmer N-14 HU AWP Proj:29116'

Page 12 of 16



## REFERENCE WELLPATH IDENTIFICATION

Operator	EQT (TUG HILL OPERATING, LLC)	Well	Elmer N-14 HU
Field	Wetzel	API/Legal	
Facility	Elmer Pad	Wellbore	Elmer N-14 HU AWB
Slot	Slot 14		

## WELLPATH DATA (373 stations)

MD [ft]	Inclination [°]	Azimuth [°]	TVD [ft]	Vert Sect [ft]	North [ft]	East [ft]	Grid East [US ft]	Grid North [US ft]	Latitude	Longitude	Closure Dist [ft]	Closure Dir [°]	DLS [°/100ft]	Build Rate [°/100ft]	Turn Rate [°/100ft]
22512.00	90.740	330.800	11552.67	10896.39	8151.81	-7278.23	1706953.75	14423547.77	39°42'58.9826"N	80°45'48.1929"W	10928.16	318.240	0.19	-0.03	0.18
22605.00	90.920	330.730	11551.32	10988.44	8232.96	-7323.64	1706908.36	14423628.88	39°42'59.7857"N	80°45'48.7713"W	11018.96	318.345	0.21	0.19	-0.08
22699.00	90.800	330.430	11549.91	11081.53	8314.83	-7369.81	1706862.21	14423710.72	39°43'0.5960"N	80°45'49.3594"W	11110.83	318.448	0.34	-0.13	-0.32
22792.00	90.830	330.740	11548.59	11173.62	8395.83	-7415.48	1706816.55	14423791.69	39°43'1.3977"N	80°45'49.9411"W	11201.76	318.548	0.33	0.03	0.33
22884.00	90.830	330.550	11547.26	11264.70	8476.01	-7460.58	1706771.48	14423871.84	39°43'2.1913"N	80°45'50.5154"W	11291.72	318.646	0.21	0.00	-0.21
22978.00	90.650	330.590	11546.04	11357.79	8557.87	-7506.76	1706725.31	14423953.67	39°43'3.0015"N	80°45'51.1037"W	11383.70	318.744	0.20	-0.19	0.04
23071.00	90.680	331.100	11544.96	11449.83	8639.08	-7552.07	1706680.02	14424034.85	39°43'3.8053"N	80°45'51.6807"W	11474.64	318.841	0.55	0.03	0.55
23164.00	90.740	330.460	11543.81	11541.87	8720.24	-7597.46	1706634.65	14424115.97	39°43'4.6085"N	80°45'52.2589"W	11565.64	318.936	0.69	0.06	-0.69
23257.00	90.920	331.090	11542.46	11633.92	8801.40	-7642.86	1706589.26	14424197.09	39°43'5.4117"N	80°45'52.8372"W	11656.67	319.030	0.70	0.19	0.68
23351.00	90.830	330.380	11541.03	11726.97	8883.39	-7688.81	1706543.33	14424279.05	39°43'6.2232"N	80°45'53.4224"W	11748.72	319.123	0.76	-0.10	-0.76
23444.00	90.680	329.570	11539.80	11819.19	8963.90	-7735.34	1706496.82	14424359.53	39°43'7.0201"N	80°45'54.0152"W	11840.06	319.208	0.89	-0.16	-0.87
23536.00	90.740	329.470	11538.66	11910.51	9043.18	-7782.00	1706450.18	14424438.78	39°43'7.8048"N	80°45'54.6097"W	11930.58	319.287	0.13	0.07	-0.11
23629.00	90.680	329.500	11537.51	12002.84	9123.29	-7829.22	1706402.98	14424518.86	39°43'8.5978"N	80°45'55.2113"W	12022.11	319.365	0.07	-0.06	0.03
23723.00	90.710	329.230	11536.37	12096.18	9204.17	-7877.12	1706355.10	14424599.71	39°43'9.3983"N	80°45'55.8215"W	12114.69	319.442	0.29	0.03	-0.29
23816.00	90.920	329.760	11535.05	12188.50	9284.29	-7924.32	1706307.92	14424679.79	39°43'10.1913"N	80°45'56.4229"W	12206.26	319.519	0.61	0.23	0.57
23909.00	90.980	329.840	11533.50	12280.76	9364.65	-7971.09	1706261.16	14424760.13	39°43'10.9868"N	80°45'57.0188"W	12297.77	319.596	0.11	0.06	0.09
24002.00	90.830	329.970	11532.03	12372.99	9445.11	-8017.72	1706214.55	14424840.55	39°43'11.7831"N	80°45'57.6128"W	12389.27	319.673	0.21	-0.16	0.14
24096.00	90.710	329.380	11530.77	12466.27	9526.24	-8065.18	1706167.11	14424921.65	39°43'12.5861"N	80°45'58.2175"W	12481.84	319.748	0.64	-0.13	-0.63
24189.00	90.950	329.940	11529.42	12558.56	9606.49	-8112.15	1706120.16	14425001.87	39°43'13.3804"N	80°45'58.8159"W	12573.45	319.821	0.66	0.26	0.60
24282.00	90.920	329.910	11527.91	12650.79	9686.96	-8158.75	1706073.58	14425082.31	39°43'14.1769"N	80°45'59.4096"W	12665.01	319.895	0.05	-0.03	-0.03
24375.00	91.020	329.920	11526.33	12743.02	9767.42	-8205.36	1706026.99	14425162.74	39°43'14.9733"N	80°46'0.0034"W	12756.59	319.967	0.11	0.11	0.01
24468.00	90.950	330.320	11524.73	12835.21	9848.05	-8251.69	1705980.68	14425243.33	39°43'15.7713"N	80°46'0.5936"W	12848.13	320.040	0.44	-0.08	0.43
24562.00	91.020	329.890	11523.12	12928.39	9929.53	-8298.53	1705933.85	14425324.78	39°43'16.5777"N	80°46'1.1904"W	12940.68	320.113	0.46	0.07	-0.46
24654.00	91.010	329.920	11521.49	13019.63	10009.11	-8344.65	1705887.75	14425404.33	39°43'17.3654"N	80°46'1.7780"W	13031.33	320.182	0.03	-0.01	0.03
24746.00	91.050	329.910	11519.83	13110.87	10088.71	-8390.76	1705841.66	14425483.89	39°43'18.1532"N	80°46'2.3655"W	13122.00	320.250	0.04	0.04	-0.01
24840.00	90.770	330.050	11518.34	13204.08	10170.08	-8437.79	1705794.65	14425565.24	39°43'18.9587"N	80°46'2.9646"W	13214.65	320.319	0.33	-0.30	0.15
24933.00	90.800	330.190	11517.07	13296.27	10250.71	-8484.11	1705748.34	14425645.84	39°43'19.7567"N	80°46'3.5548"W	13306.29	320.387	0.15	0.03	0.15
25026.00	91.110	329.730	11515.52	13388.50	10331.21	-8530.66	1705701.81	14425726.30	39°43'20.5534"N	80°46'4.1478"W	13397.99	320.453	0.60	0.33	-0.49
25119.00	91.020	330.390	11513.79	13480.69	10411.79	-8577.07	1705655.42	14425806.85	39°43'21.3509"N	80°46'4.7391"W	13489.68	320.519	0.72	-0.10	0.71
25212.00	90.830	329.910	11512.29	13572.88	10492.44	-8623.35	1705609.16	14425887.46	39°43'22.1492"N	80°46'5.3288"W	13581.36	320.584	0.56	-0.20	-0.52





RECEIVED  
Office Of Oil and Gas

OCT 02 2024

WV Department of  
Environmental Protection

# Actual Wellpath Report

Elmer N-14 HU AWP Proj:29116'

Page 13 of 16



## REFERENCE WELLPATH IDENTIFICATION

Operator	EQT (TUG HILL OPERATING, LLC)	Well	Elmer N-14 HU
Field	Wetzel	API/Legal	
Facility	Elmer Pad	Wellbore	Elmer N-14 HU AWB
Slot	Slot 14		

## WELLPATH DATA (373 stations)

MD [ft]	Inclination [°]	Azimuth [°]	TVD [ft]	Vert Sect [ft]	North [ft]	East [ft]	Grid East [US ft]	Grid North [US ft]	Latitude	Longitude	Closure Dist [ft]	Closure Dir [°]	DLS [°/100ft]	Build Rate [°/100ft]	Turn Rate [°/100ft]
25305.00	91.110	330.090	11510.71	13665.09	10572.97	-8669.85	1705562.68	14425967.96	39°43'22.9462"N	80°46'5.9211"W	13673.11	320.648	0.36	0.30	0.19
25398.00	91.080	330.410	11508.94	13757.25	10653.69	-8715.99	1705516.56	14426048.66	39°43'23.7452"N	80°46'6.5089"W	13764.80	320.713	0.35	-0.03	0.34
25491.00	91.080	330.320	11507.18	13849.38	10734.51	-8761.96	1705470.60	14426129.45	39°43'24.5451"N	80°46'7.0947"W	13856.47	320.777	0.10	0.00	-0.10
25584.00	90.980	330.280	11505.51	13941.53	10815.28	-8808.03	1705424.55	14426210.18	39°43'25.3445"N	80°46'7.6816"W	13948.18	320.840	0.12	-0.11	-0.04
25678.00	90.920	330.150	11503.95	14034.69	10896.85	-8854.72	1705377.88	14426291.72	39°43'26.1518"N	80°46'8.2765"W	14040.92	320.903	0.15	-0.06	-0.14
25771.00	91.050	330.360	11502.35	14126.85	10977.59	-8900.86	1705331.77	14426372.42	39°43'26.9509"N	80°46'8.8643"W	14132.68	320.964	0.27	0.14	0.23
25865.00	91.010	329.140	11500.66	14220.11	11058.77	-8948.20	1705284.44	14426453.58	39°43'27.7544"N	80°46'9.4675"W	14225.57	321.022	1.30	-0.04	-1.30
25958.00	91.200	329.170	11498.87	14312.48	11138.61	-8995.88	1705236.78	14426533.38	39°43'28.5446"N	80°46'10.0750"W	14317.62	321.075	0.21	0.20	0.03
26051.00	90.830	328.980	11497.22	14404.88	11218.37	-9043.66	1705189.02	14426613.11	39°43'29.3341"N	80°46'10.6840"W	14409.71	321.126	0.45	-0.40	-0.20
26145.00	90.980	328.790	11495.74	14498.30	11298.84	-9092.23	1705140.47	14426693.55	39°43'30.1306"N	80°46'11.3030"W	14502.84	321.176	0.26	0.16	-0.20
26237.00	90.770	329.170	11494.33	14589.72	11377.67	-9139.64	1705093.08	14426772.35	39°43'30.9109"N	80°46'11.9071"W	14593.99	321.225	0.47	-0.23	0.41
26330.00	90.860	329.260	11493.01	14682.10	11457.56	-9187.23	1705045.50	14426852.21	39°43'31.7016"N	80°46'12.5136"W	14686.08	321.276	0.14	0.10	0.10
26422.00	90.620	328.850	11491.82	14773.51	11536.46	-9234.54	1704998.22	14426931.07	39°43'32.4825"N	80°46'13.1164"W	14777.23	321.324	0.52	-0.26	-0.45
26517.00	90.580	328.780	11490.83	14867.95	11617.73	-9283.72	1704949.05	14427012.31	39°43'33.2869"N	80°46'13.7433"W	14871.42	321.372	0.08	-0.04	-0.07
26611.00	90.860	328.360	11489.65	14961.43	11697.93	-9332.74	1704900.06	14427092.48	39°43'34.0808"N	80°46'14.3680"W	14964.67	321.417	0.54	0.30	-0.45
26704.00	91.450	327.500	11487.77	15054.01	11776.72	-9382.11	1704850.71	14427171.24	39°43'34.8607"N	80°46'14.9973"W	15057.06	321.457	1.12	0.63	-0.92
26797.00	91.110	328.640	11485.69	15146.56	11855.63	-9431.28	1704801.55	14427250.11	39°43'35.6418"N	80°46'15.6240"W	15149.42	321.497	1.28	-0.37	1.23
26890.00	91.170	328.610	11483.84	15239.03	11935.01	-9479.69	1704753.16	14427329.47	39°43'36.4275"N	80°46'16.2410"W	15241.69	321.541	0.07	0.06	-0.03
26983.00	91.080	329.500	11482.02	15331.43	12014.76	-9527.50	1704705.37	14427409.18	39°43'37.2169"N	80°46'16.8503"W	15333.87	321.586	0.96	-0.10	0.96
27075.00	91.170	329.890	11480.21	15422.70	12094.17	-9573.91	1704658.97	14427488.56	39°43'38.0028"N	80°46'17.4418"W	15424.94	321.634	0.43	0.10	0.42
27169.00	91.170	329.880	11478.29	15515.93	12175.47	-9621.07	1704611.84	14427569.83	39°43'38.8075"N	80°46'18.0427"W	15517.95	321.684	0.01	0.00	-0.01
27262.00	91.260	329.500	11476.32	15608.20	12255.74	-9667.99	1704564.93	14427650.06	39°43'39.6019"N	80°46'18.6406"W	15610.03	321.732	0.42	0.10	-0.41
27356.00	91.230	329.660	11474.28	15701.48	12336.78	-9715.58	1704517.37	14427731.07	39°43'40.4040"N	80°46'19.2470"W	15703.14	321.779	0.17	-0.03	0.17
27448.00	91.350	330.050	11472.21	15792.72	12416.31	-9761.77	1704471.20	14427810.58	39°43'41.1912"N	80°46'19.8356"W	15794.20	321.825	0.44	0.13	0.42
27541.00	91.140	330.320	11470.19	15884.89	12496.98	-9808.00	1704424.99	14427891.22	39°43'41.9896"N	80°46'20.4247"W	15886.20	321.874	0.37	-0.23	0.29
27634.00	91.290	329.690	11468.21	15977.10	12577.51	-9854.48	1704378.52	14427971.71	39°43'42.7866"N	80°46'21.0170"W	15978.25	321.921	0.70	0.16	-0.68
27727.00	91.660	329.430	11465.82	16069.38	12657.66	-9901.58	1704331.44	14428051.83	39°43'43.5800"N	80°46'21.6172"W	16070.40	321.965	0.49	0.40	-0.28
27820.00	91.480	329.940	11463.27	16161.64	12737.92	-9948.50	1704284.53	14428132.06	39°43'44.3742"N	80°46'22.2152"W	16162.53	322.010	0.58	-0.19	0.55
27914.00	91.540	329.760	11460.79	16254.86	12819.17	-9995.70	1704237.36	14428213.28	39°43'45.1785"N	80°46'22.8167"W	16255.62	322.055	0.20	0.06	-0.19
28007.00	91.570	329.740	11458.27	16347.10	12899.48	-10042.53	1704190.54	14428293.55	39°43'45.9733"N	80°46'23.4135"W	16347.75	322.098	0.04	0.03	-0.02



OCT 02 2024

WV Department of  
Environmental Protection



# Actual Wellpath Report

Elmer N-14 HU AWP Proj:29116'

Page 14 of 16



## REFERENCE WELLPATH IDENTIFICATION

Operator	EQT (TUG HILL OPERATING, LLC)	Well	Elmer N-14 HU
Field	Wetzel	API/Legal	
Facility	Elmer Pad	Wellbore	Elmer N-14 HU AWB
Slot	Slot 14		

## WELLPATH DATA (373 stations) † = interpolated, ‡ = extrapolated station

MD [ft]	Inclination [°]	Azimuth [°]	TVD [ft]	Vert Sect [ft]	North [ft]	East [ft]	Grid East [US ft]	Grid North [US ft]	Latitude	Longitude	Closure Dist [ft]	Closure Dir [°]	DLS [°/100ft]	Build Rate [°/100ft]	Turn Rate [°/100ft]
28100.00	91.480	329.980	11455.80	16439.33	12979.88	-10089.21	1704143.88	14428373.92	39°43'46.7690"N	80°46'24.0084"W	16439.87	322.142	0.28	-0.10	0.26
28193.00	91.450	329.850	11453.42	16531.54	13060.32	-10135.82	1704097.29	14428454.33	39°43'47.5652"N	80°46'24.6023"W	16531.99	322.186	0.14	-0.03	-0.14
28285.00	91.080	329.890	11451.39	16622.78	13139.87	-10181.99	1704051.14	14428533.85	39°43'48.3525"N	80°46'25.1906"W	16623.15	322.228	0.40	-0.40	0.04
28378.00	91.110	329.610	11449.61	16715.04	13220.19	-10228.83	1704004.32	14428614.14	39°43'49.1475"N	80°46'25.7876"W	16715.34	322.270	0.30	0.03	-0.30
28471.00	91.170	330.000	11447.76	16807.29	13300.56	-10275.59	1703957.57	14428694.48	39°43'49.9429"N	80°46'26.3835"W	16807.52	322.311	0.42	0.06	0.42
28564.00	91.140	329.760	11445.89	16899.52	13380.99	-10322.25	1703910.93	14428774.87	39°43'50.7389"N	80°46'26.9782"W	16899.69	322.353	0.26	-0.03	-0.26
28657.00	91.200	329.970	11443.99	16991.76	13461.40	-10368.93	1703864.27	14428855.25	39°43'51.5348"N	80°46'27.5731"W	16991.88	322.394	0.23	0.06	0.23
28750.00	91.080	329.810	11442.14	17083.99	13541.83	-10415.58	1703817.64	14428935.66	39°43'52.3308"N	80°46'28.1675"W	17084.07	322.435	0.22	-0.13	-0.17
28843.00	91.080	330.160	11440.38	17176.21	13622.35	-10462.09	1703771.15	14429016.14	39°43'53.1277"N	80°46'28.7603"W	17176.25	322.475	0.38	0.00	0.38
28936.00	91.010	329.920	11438.69	17268.41	13702.91	-10508.53	1703724.73	14429096.66	39°43'53.9250"N	80°46'29.3520"W	17268.43	322.516	0.27	-0.08	-0.26
29029.00	90.980	329.980	11437.07	17360.63	13783.40	-10555.09	1703678.19	14429177.12	39°43'54.7216"N	80°46'29.9454"W	17360.64	322.556	0.07	-0.03	0.06
29091.00	91.010	330.020	11436.00	17422.11	13837.08	-10586.09	1703647.20	14429230.78	39°43'55.2529"N	80°46'30.3404"W	17422.11	322.582	0.08	0.05	0.06
29116.00‡	91.010	330.020	11435.55	17446.90	13858.73	-10598.58	1703634.72	14429252.43	39°43'55.4672"N	80°46'30.4996"W	17446.90	322.593	0.00	0.00	0.00

## HOLE & CASING SECTIONS - Ref Wellbore: Elmer N-14 HU AWB Ref Wellpath: Elmer N-14 HU AWP Proj:29116'

String/Diameter	Start MD [ft]	End MD [ft]	Interval [ft]	Start TVD [ft]	End TVD [ft]	Start N/S [ft]	Start E/W [ft]	End N/S [ft]	End E/W [ft]
30in Conductor	33.00	153.00	120.00	33.00	153.00	0.00	0.00	-0.27	-0.19
26in Open Hole	153.00	1110.00	957.00	153.00	1109.99	-0.27	-0.19	-0.29	-3.69
20in Casing Surface	33.00	1110.00	1077.00	33.00	1109.99	0.00	0.00	-0.29	-3.69
17.5in Open Hole	153.00	2985.00	2832.00	153.00	2984.91	-0.27	-0.19	3.37	0.55
13.375in Casing Intermediate	33.00	2985.00	2952.00	33.00	2984.91	0.00	0.00	3.37	0.55
12.25in Open Hole	2985.00	10867.00	7882.00	2984.91	10512.90	3.37	0.55	-662.96	-1351.79
9.625in Casing Intermediate	33.00	10867.00	10834.00	33.00	10512.90	0.00	0.00	-662.96	-1351.79
8.5in Open Hole	10867.00	29116.00	18249.00	10512.90	11435.55	-662.96	-1351.79	13858.73	-10598.58
5.5in Casing Production	33.00	29116.00	29083.00	33.00	11435.55	0.00	0.00	13858.73	-10598.58





OCT 02 2024

WV Department of  
Environmental Protection

# Actual Wellpath Report

Elmer N-14 HU AWP Proj:29116'



## REFERENCE WELLPATH IDENTIFICATION

Operator	EQT (TUG HILL OPERATING, LLC)	Well	Elmer N-14 HU
Field	Wetzel	API/Legal	
Facility	Elmer Pad	Wellbore	Elmer N-14 HU AWB
Slot	Slot 14		

## TARGETS

Name	TVD [ft]	North [ft]	East [ft]	Grid East [US ft]	Grid North [US ft]	Latitude	Longitude	Shape
Elmer N-14HU BHL Rev-1	11375.00	13861.53	-10595.53	1703637.77	14429255.23	39°43'55.4948"N	80°46'30.4605"W	point
Elmer N-14 HU BHL Rev-0	11414.00	13861.58	-10595.55	1703637.74	14429255.27	39°43'55.4952"N	80°46'30.4608"W	point
Elmer N-14HU LP Rev-1	11661.00	-337.98	-2347.50	1711882.53	14415061.34	39°41'34.9464"N	80°44'45.4030"W	point
Elmer N-14 HU LP Rev-0	11700.00	-338.00	-2347.49	1711882.54	14415061.31	39°41'34.9461"N	80°44'45.4029"W	point

## WELLPATH COMPOSITION - Ref Wellbore: Elmer N-14 HU AWB Ref Wellpath: Elmer N-14 HU AWP Proj:29116'

Start MD [ft]	End MD [ft]	Positional Uncertainty Model	Log Name/Comment	Wellbore	Survey Date
33.00	885.00	OWSG MWD rev2 - Standard	01_MWD [OWSG MWD Rev.2+Standard] (33' - 885')	Elmer N-14 HU AWB	8/23/2023
885.00	2979.00	OWSG MWD rev2 - Standard	02_MWD [OWSG MWD Rev.2+Standard](885')(929'-2979')	Elmer N-14 HU AWB	8/23/2023
2979.00	5062.00	OWSG MWD rev2 - Standard	03_MWD [OWSG MWD Rev.2+Standard] (2979')(3039'-5062')	Elmer N-14 HU AWB	8/23/2023
5062.00	10836.98	OWSG MWD rev2 - Standard	04_MWD [OWSG MWD Rev.2+Standard] (5062')(5116'-10837')	Elmer N-14 HU AWB	8/23/2023
10836.98	29116.00	OWSG MWD rev2 + IFR1 + Axial Corr + Sag Correction	05_BH Lucida+SQC IFR1+SAG+FDIR <8-1/2">(10837')(10880'-29091')	Elmer N-14 HU AWB	10/9/2023



OCT 02 2024

WV Department of  
Environmental Protection



# Actual Wellpath Report

Elmer N-14 HU AWP Proj:29116'

Page 16 of 16



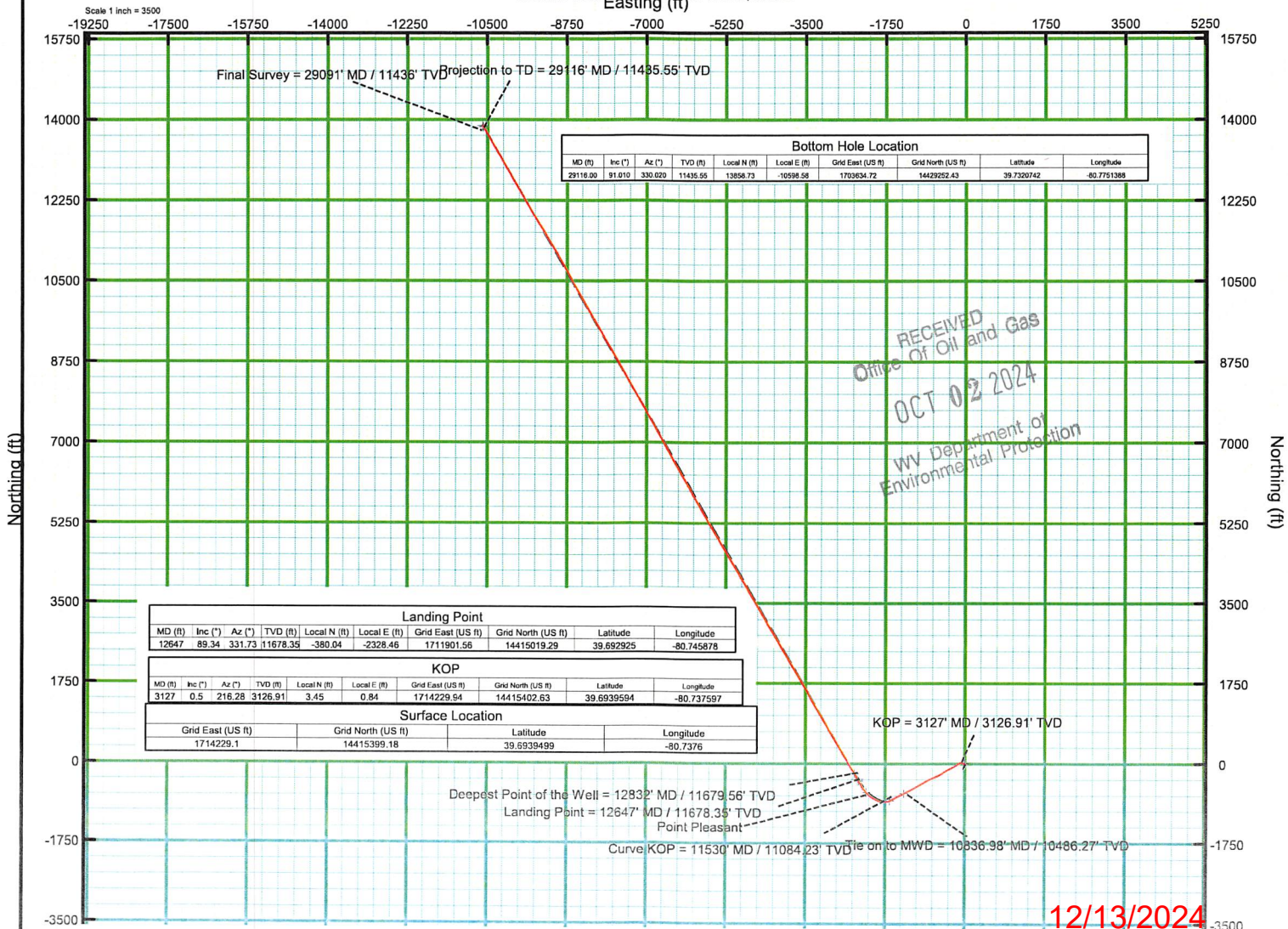
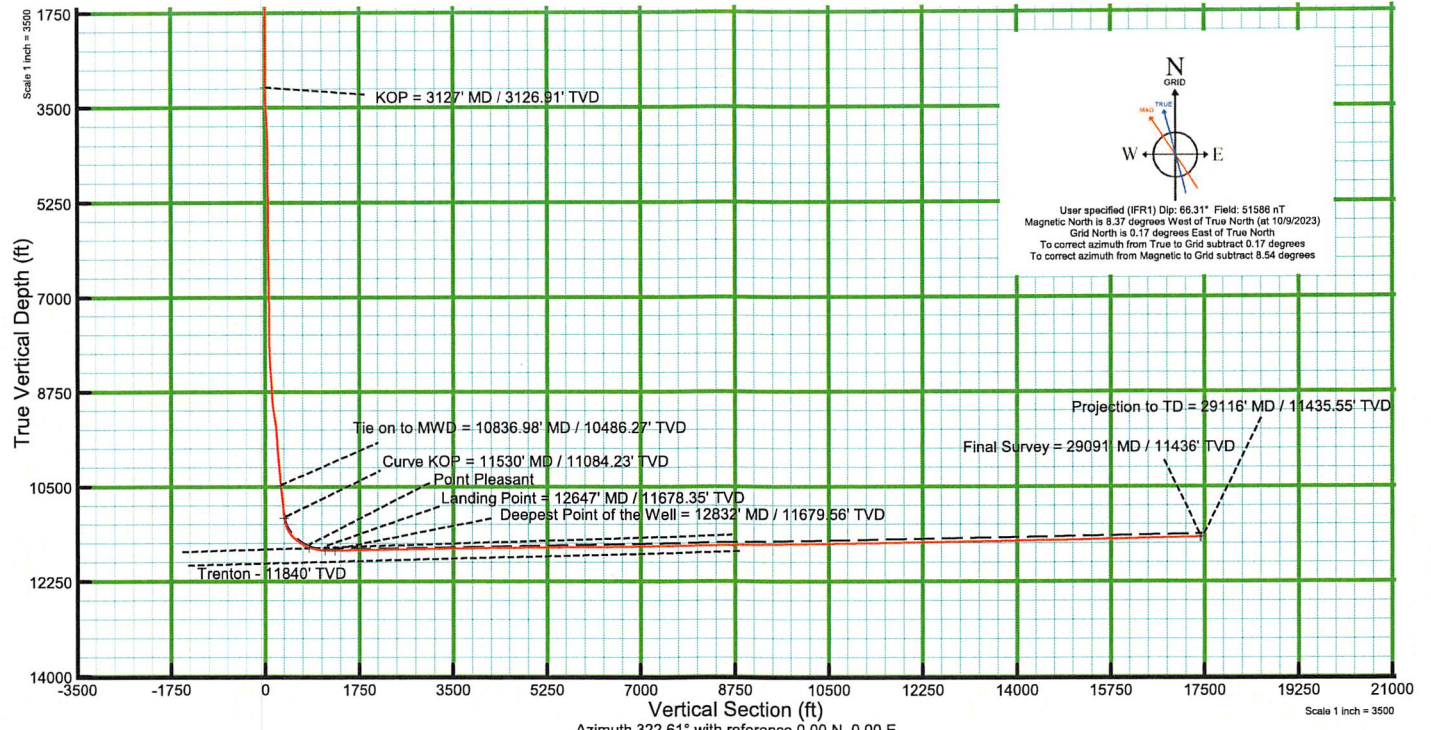
REFERENCE WELLPATH IDENTIFICATION			
Operator	EQT (TUG HILL OPERATING, LLC)	Well	Elmer N-14 HU
Field	Wetzel	API/Legal	
Facility	Elmer Pad	Wellbore	Elmer N-14 HU AWB
Slot	Slot 14		

COMMENTS
<p><b>Wellpath general comments</b>                      API: 47-103-03502-0000                      BH Job #: 111941687                      Rig: Nabors X08                      Duration: 10/20/2023-10/27/2023</p> <p>01_MWD [OWSG MWD Rev.2+Standard] (181' - 885')                      02_MWD [OWSG MWD Rev.2+Standard](885')(929'-2979')                      03_MWD [OWSG MWD Rev.2+Standard] (2979')(3039'-5062')                      04_MWD [OWSG MWD Rev.2+Standard] (5062')(5116'-10837')                      05_BH Lucida+SQC IFR1+SAG+FDIR &lt;8-1/2"&gt;(10837')(10880'-29091')</p> <p>Landing Pt. @ 12647' MD                      Final Survey @ 29091' MD                      Projected MD at TD: 29116'</p>





KB Elevation=1310 FT  
 Ground Elevation=1277 FT  
 All Survey Measurements were taken from KB Elevation



Landing Point

MD (ft)	Inc (°)	Az (°)	TVD (ft)	Local N (ft)	Local E (ft)	Grid East (US ft)	Grid North (US ft)	Latitude	Longitude
12647	89.34	331.73	11678.35	-380.04	-2328.46	1711901.56	14415019.29	39.692925	-80.745678

KOP

MD (ft)	Inc (°)	Az (°)	TVD (ft)	Local N (ft)	Local E (ft)	Grid East (US ft)	Grid North (US ft)	Latitude	Longitude
3127	0.5	216.28	3126.91	3.45	0.84	1714229.94	14415402.63	39.6939594	-80.737597

Surface Location

Grid East (US ft)	Grid North (US ft)	Latitude	Longitude
1714229.1	14415399.18	39.6939499	-80.7376