



KB Elevation=1310 FT
 Ground Elevation=1277 FT
 All Survey Measurements were taken from KB Elevation

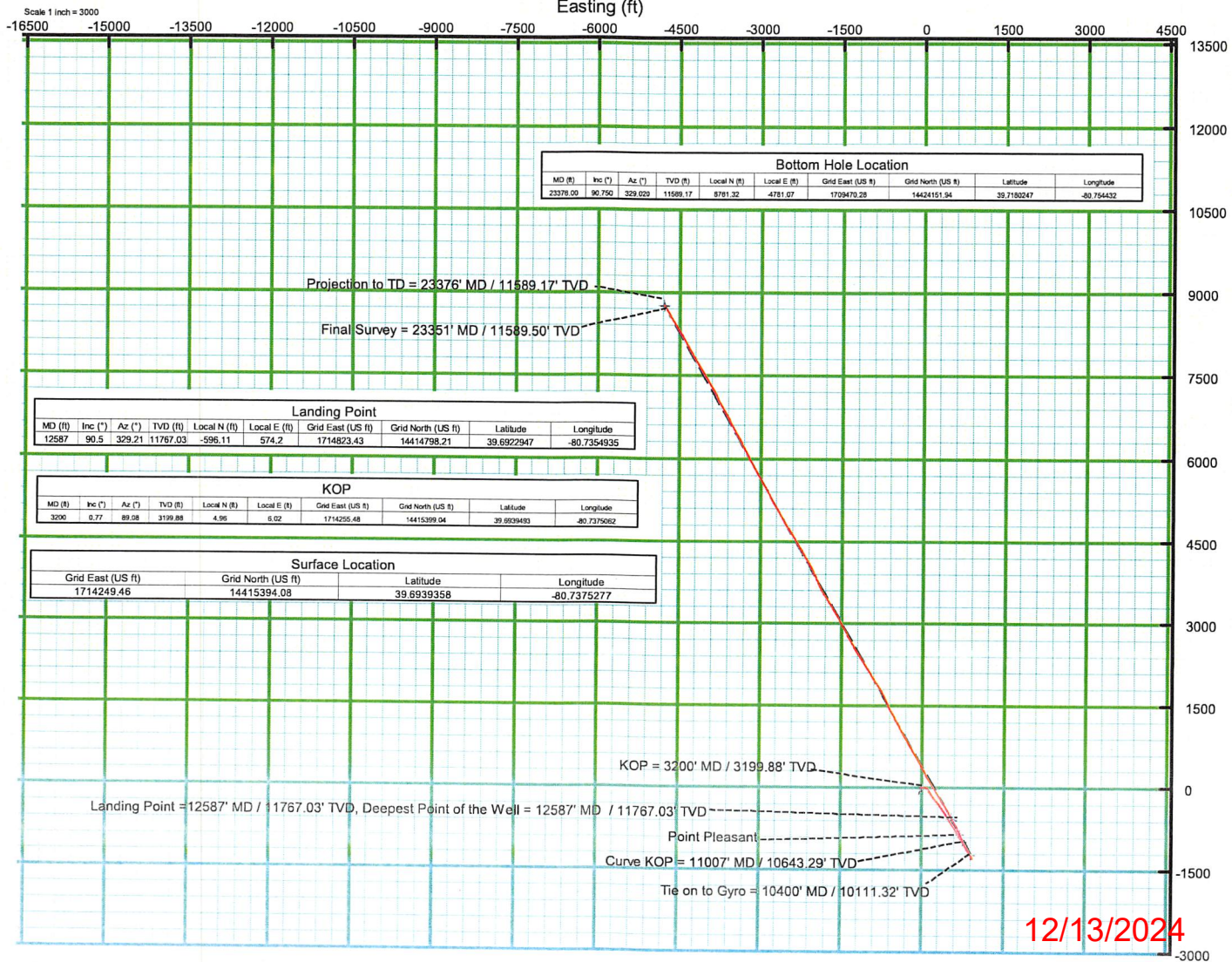
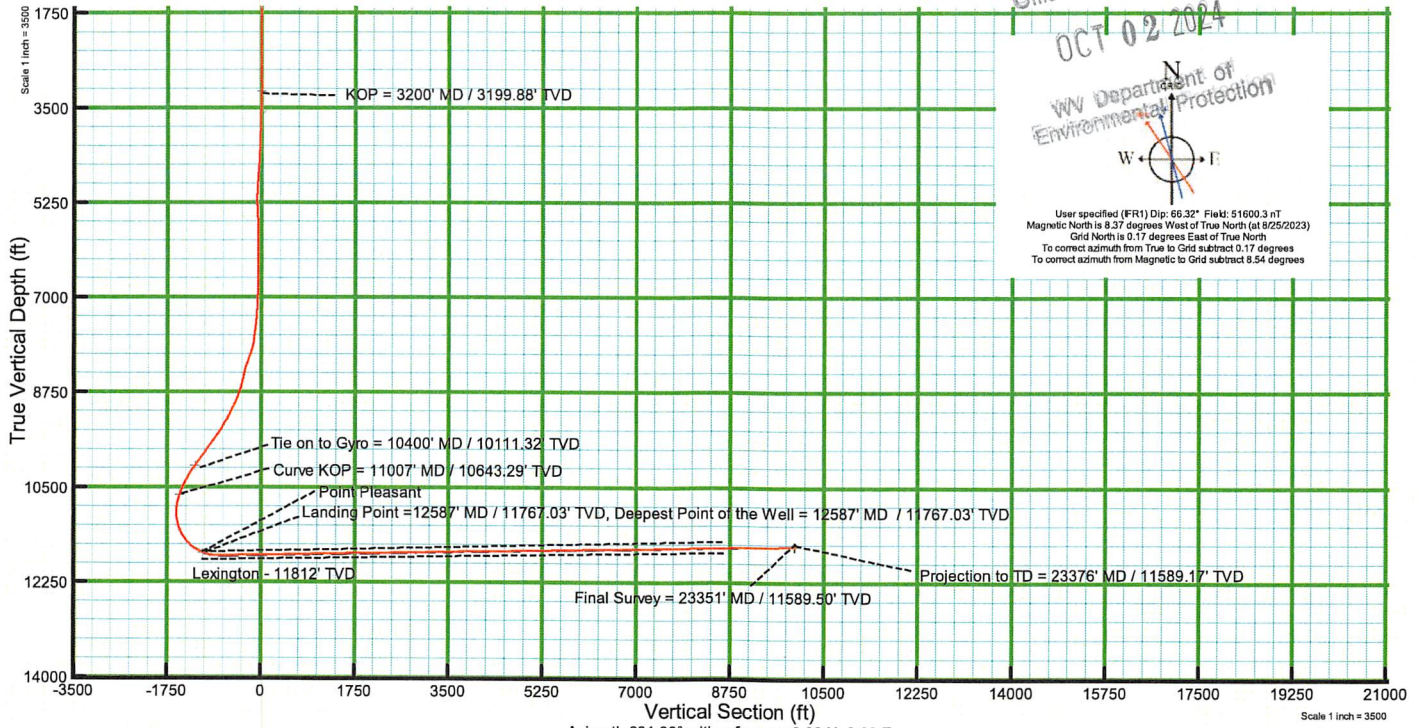
RECEIVED
 Office Of Oil and Gas



OCT 02 2024



User specified (FR1) Dip: 66.32° Field: 51600.3 nT
 Magnetic North is 8.37 degrees West of True North (at 8/25/2023)
 Grid North is 0.17 degrees East of True North
 To correct azimuth from True to Grid subtract 0.17 degrees
 To correct azimuth from Magnetic to Grid subtract 8.54 degrees



Bottom Hole Location									
MD (ft)	Inc (°)	Az (°)	TVD (ft)	Local N (ft)	Local E (ft)	Grid East (US ft)	Grid North (US ft)	Latitude	Longitude
23376.00	90.750	329.029	11589.17	8761.32	-4761.07	1709470.28	14424151.94	39.7180247	-80.754432

Landing Point									
MD (ft)	Inc (°)	Az (°)	TVD (ft)	Local N (ft)	Local E (ft)	Grid East (US ft)	Grid North (US ft)	Latitude	Longitude
12587	90.5	329.21	11767.03	-596.11	574.2	1714823.43	14414798.21	39.6922947	-80.7354935

KOP									
MD (ft)	Inc (°)	Az (°)	TVD (ft)	Local N (ft)	Local E (ft)	Grid East (US ft)	Grid North (US ft)	Latitude	Longitude
3200	0.77	89.08	3199.88	4.96	6.02	1714295.48	14415399.04	39.6939493	-80.7375062

Surface Location			
Grid East (US ft)	Grid North (US ft)	Latitude	Longitude
1714249.46	14415394.08	39.6939358	-80.7375277

12/13/2024



Actual Wellpath Report

Elmer N-16 HU ST01 AWP Proj: 23376'

Page 1 of 12



REFERENCE WELLPATH IDENTIFICATION

Operator	EQT (TUG HILL OPERATING, LLC)	Well	Elmer N-16 HU ST01
Field	Wetzel	API	47-103-03504-0000
Facility	Elmer Pad	Wellbore	Elmer N-16 HU ST01 AWB
Slot	Slot 16	Sidetrack from	Elmer N-16 HU AWP Proj: at 10400.00 MD

REPORT SETUP INFORMATION

Projection System	NAD83 / UTM Zone 17 North, US feet	Software System	WellArchitect® 6.0
North Reference	Grid	User	Scurdan
Scale	0.999606	Report Generated	9/20/2023 at 11:21:23 AM
Convergence at slot	0.17° East	Database	WA_MPL_EASTERNUS_Defn

WELLPATH LOCATION

	Local coordinates		Grid coordinates		Geographic coordinates	
	North[ft]	East[ft]	Easting[US ft]	Northing[US ft]	Latitude	Longitude
Slot Location	80.28	41.74	1714249.46	14415394.08	39°41'38.1688"N	80°44'15.0996"W
Facility Reference Pt			1714207.74	14415313.83	39°41'37.3765"N	80°44'15.6366"W
Field Reference Pt			1628437.04	12695896.25	34°58'12.0000"N	81°02'24.0000"W

WELLPATH DATUM

Calculation method	Minimum curvature	Nabors X08 (RKB) to Facility Vertical Datum	1310.00ft
Horizontal Reference Pt	Slot	Nabors X08 (RKB) to Mean Sea Level	1310.00ft
Vertical Reference Pt	Nabors X08 (RKB)	Nabors X08 (RKB) to Ground Level at Slot (Slot 16)	33.00ft
MD Reference Pt	Nabors X08 (RKB)	Section Origin	N 0.00, E 0.00 ft
Field Vertical Reference	Mean Sea Level	Section Azimuth	331.38°

RECEIVED
Office Of Oil and Gas
OCT 02 2024
WV Department of
Environmental Protection



Actual Wellpath Report

Elmer N-16 HU ST01 AWP Proj: 23376'

Page 2 of 12



REFERENCE WELLPATH IDENTIFICATION

Operator	EQT (TUG HILL OPERATING, LLC)	Well	Elmer N-16 HU ST01
Field	Wetzel	API	47-103-03504-0000
Facility	Elmer Pad	Wellbore	Elmer N-16 HU ST01 AWB
Slot	Slot 16	Sidetrack from	Elmer N-16 HU AWP Proj: at 10400.00 MD

WELLPATH DATA (248 stations) † = interpolated, ‡ = extrapolated station

MD [ft]	Inclination [°]	Azimuth [°]	TVD [ft]	Vert Sect [ft]	North [ft]	East [ft]	Grid East [US ft]	Grid North [US ft]	Latitude	Longitude	Closure Dist [ft]	Closure Dir [°]	DLS ["/100ft]	Build Rate ["/100ft]	Turn Rate ["/100ft]
0.00†	0.000	273.730	0.00	0.00	0.00	0.00	1714249.46	14415394.08	39°41'38.1688"N	80°44'15.0996"W	0.00	0.000	0.00	0.00	0.00
33.00	0.000	273.730	33.00	0.00	0.00	0.00	1714249.46	14415394.08	39°41'38.1688"N	80°44'15.0996"W	0.00	0.000	0.00	0.00	0.00
100.00	0.290	273.730	100.00	0.09	0.01	-0.17	1714249.29	14415394.09	39°41'38.1689"N	80°44'15.1018"W	0.17	273.730	0.43	0.43	0.00
200.00	0.120	258.260	200.00	0.26	0.01	-0.52	1714248.94	14415394.09	39°41'38.1688"N	80°44'15.1064"W	0.52	270.676	0.18	-0.17	-15.47
300.00	0.180	273.480	300.00	0.37	-0.01	-0.78	1714248.68	14415394.07	39°41'38.1687"N	80°44'15.1097"W	0.78	269.592	0.07	0.06	15.22
400.00	0.160	281.360	400.00	0.54	0.03	-1.08	1714248.38	14415394.11	39°41'38.1691"N	80°44'15.1134"W	1.08	271.672	0.03	-0.02	7.88
500.00	0.160	288.790	500.00	0.74	0.10	-1.35	1714248.11	14415394.18	39°41'38.1698"N	80°44'15.1169"W	1.35	274.414	0.02	0.00	7.43
600.00	0.200	269.300	600.00	0.92	0.15	-1.65	1714247.81	14415394.23	39°41'38.1702"N	80°44'15.1208"W	1.66	275.074	0.07	0.04	-19.49
700.00	0.170	265.630	700.00	1.06	0.13	-1.98	1714247.49	14415394.21	39°41'38.1701"N	80°44'15.1249"W	1.98	273.861	0.03	-0.03	-3.67
800.00	0.210	267.260	800.00	1.20	0.11	-2.31	1714247.15	14415394.19	39°41'38.1699"N	80°44'15.1292"W	2.31	272.811	0.04	0.04	1.63
900.00	0.190	277.410	900.00	1.38	0.13	-2.65	1714246.81	14415394.21	39°41'38.1701"N	80°44'15.1336"W	2.66	272.716	0.04	-0.02	10.15
1000.00	0.190	285.250	1000.00	1.59	0.19	-2.98	1714246.48	14415394.27	39°41'38.1707"N	80°44'15.1377"W	2.98	273.667	0.03	0.00	7.84
1100.00	0.190	283.170	1099.99	1.82	0.27	-3.30	1714246.16	14415394.35	39°41'38.1715"N	80°44'15.1419"W	3.31	274.717	0.01	0.00	-2.08
1200.00	0.090	39.760	1199.99	1.96	0.37	-3.41	1714246.05	14415394.45	39°41'38.1725"N	80°44'15.1433"W	3.43	276.198	0.24	-0.10	116.59
1300.00	0.690	97.840	1299.99	1.63	0.35	-2.76	1714246.70	14415394.43	39°41'38.1723"N	80°44'15.1350"W	2.79	277.189	0.65	0.60	58.08
1400.00	0.930	94.040	1399.98	0.83	0.21	-1.36	1714248.10	14415394.29	39°41'38.1709"N	80°44'15.1170"W	1.37	278.763	0.25	0.24	-3.80
1500.00	0.880	79.600	1499.97	0.16	0.29	0.21	1714249.67	14415394.37	39°41'38.1716"N	80°44'15.0970"W	0.36	35.397	0.23	-0.05	-14.44
1600.00	0.780	75.380	1599.96	-0.25	0.60	1.62	1714251.08	14415394.68	39°41'38.1746"N	80°44'15.0789"W	1.73	69.645	0.12	-0.10	-4.22
1700.00	0.480	94.470	1699.95	-0.64	0.74	2.70	1714252.16	14415394.82	39°41'38.1760"N	80°44'15.0651"W	2.80	74.648	0.36	-0.30	19.09
1800.00	0.480	103.260	1799.95	-1.15	0.61	3.52	1714252.98	14415394.69	39°41'38.1747"N	80°44'15.0546"W	3.57	80.148	0.07	0.00	8.79
1900.00	0.520	175.160	1899.95	-1.85	0.06	3.97	1714253.43	14415394.14	39°41'38.1693"N	80°44'15.0489"W	3.97	89.084	0.59	0.04	71.90
2000.00	0.610	184.800	1999.94	-2.70	-0.92	3.96	1714253.42	14415393.16	39°41'38.1596"N	80°44'15.0490"W	4.07	103.062	0.13	0.09	9.64
2100.00	0.210	52.170	2099.94	-3.12	-1.34	4.06	1714253.52	14415392.74	39°41'38.1554"N	80°44'15.0477"W	4.28	108.222	0.77	-0.40	-132.63
2200.00	0.490	56.070	2199.94	-3.05	-0.99	4.56	1714254.02	14415393.09	39°41'38.1589"N	80°44'15.0413"W	4.67	102.199	0.28	0.28	3.90
2300.00	0.660	64.030	2299.93	-3.04	-0.50	5.43	1714254.89	14415393.58	39°41'38.1637"N	80°44'15.0302"W	5.46	95.208	0.19	0.17	7.96
2400.00	0.250	80.290	2399.93	-3.14	-0.21	6.17	1714255.62	14415393.87	39°41'38.1665"N	80°44'15.0208"W	6.17	91.916	0.43	-0.41	16.26
2500.00	0.070	239.360	2499.93	-3.21	-0.20	6.33	1714255.79	14415393.88	39°41'38.1666"N	80°44'15.0187"W	6.33	91.815	0.32	-0.18	159.07
2600.00	0.220	281.730	2599.93	-3.09	-0.19	6.09	1714255.55	14415393.89	39°41'38.1667"N	80°44'15.0218"W	6.09	91.813	0.17	0.15	42.37
2700.00	1.190	351.980	2699.92	-1.99	0.87	5.76	1714255.21	14415394.95	39°41'38.1772"N	80°44'15.0260"W	5.82	81.360	1.13	0.97	70.25
2800.00	1.310	354.970	2799.90	0.03	3.04	5.51	1714254.97	14415397.12	39°41'38.1987"N	80°44'15.0290"W	6.29	61.106	0.14	0.12	2.99

RECEIVED
Office Of Oil and Gas
OCT 02 2024
WV Department of
Environmental Protection



Actual Wellpath Report

Elmer N-16 HU ST01 AWP Proj: 23376'

Page 3 of 12



REFERENCE WELLPATH IDENTIFICATION

Operator	EQT (TUG HILL OPERATING, LLC)	Well	Elmer N-16 HU ST01
Field	Wetzel	API	47-103-03504-0000
Facility	Elmer Pad	Wellbore	Elmer N-16 HU ST01 AWB
Slot	Slot 16	Sidetrack from	Elmer N-16 HU AWP Proj: at 10400.00 MD

WELLPATH DATA (248 stations)

MD [ft]	Inclination [°]	Azimuth [°]	TVD [ft]	Vert Sect [ft]	North [ft]	East [ft]	Grid East [US ft]	Grid North [US ft]	Latitude	Longitude	Closure Dist [ft]	Closure Dir [°]	DLS [°/100ft]	Build Rate [°/100ft]	Turn Rate [°/100ft]
2900.00	0.170	3.600	2899.89	1.20	4.33	5.42	1714254.88	14415398.41	39°41'38.2114"N	80°44'15.0302"W	6.94	51.390	1.14	-1.14	8.63
3000.00	0.170	344.290	2999.89	1.47	4.62	5.39	1714254.85	14415398.70	39°41'38.2142"N	80°44'15.0305"W	7.10	49.400	0.06	0.00	-19.31
3100.00	0.110	0.830	3099.89	1.70	4.86	5.35	1714254.81	14415398.94	39°41'38.2166"N	80°44'15.0310"W	7.23	47.762	0.07	-0.06	16.54
3200.00	0.770	89.080	3199.88	1.47	4.96	6.02	1714255.48	14415399.04	39°41'38.2176"N	80°44'15.0224"W	7.81	50.504	0.77	0.66	88.25
3300.00	2.540	91.830	3299.84	0.04	4.90	8.91	1714258.37	14415398.98	39°41'38.2170"N	80°44'14.9855"W	10.17	61.169	1.77	1.77	2.75
3400.00	3.960	94.330	3399.67	-2.96	4.57	14.57	1714264.02	14415398.65	39°41'38.2135"N	80°44'14.9131"W	15.27	72.572	1.43	1.42	2.50
3500.00	4.490	95.790	3499.40	-7.05	3.92	21.91	1714271.36	14415398.00	39°41'38.2068"N	80°44'14.8193"W	22.25	79.860	0.54	0.53	1.46
3600.00	4.360	95.090	3599.10	-11.38	3.19	29.59	1714279.03	14415397.26	39°41'38.1994"N	80°44'14.7210"W	29.76	83.855	0.14	-0.13	-0.70
3700.00	3.870	91.360	3698.85	-15.17	2.77	36.75	1714286.19	14415396.85	39°41'38.1950"N	80°44'14.6295"W	36.85	85.692	0.56	-0.49	-3.73
3800.00	3.230	88.060	3798.65	-18.12	2.78	42.94	1714292.38	14415396.86	39°41'38.1950"N	80°44'14.5503"W	43.03	86.291	0.67	-0.64	-3.30
3900.00	3.170	88.160	3898.50	-20.63	2.97	48.51	1714297.96	14415397.05	39°41'38.1967"N	80°44'14.4789"W	48.61	86.500	0.06	-0.06	0.10
4000.00	3.420	89.910	3998.33	-23.30	3.06	54.26	1714303.70	14415397.14	39°41'38.1974"N	80°44'14.4054"W	54.35	86.771	0.27	0.25	1.75
4100.00	3.590	91.260	4098.15	-26.29	3.00	60.37	1714309.81	14415397.08	39°41'38.1966"N	80°44'14.3272"W	60.45	87.158	0.19	0.17	1.35
4200.00	3.440	96.060	4197.96	-29.56	2.61	66.49	1714315.92	14415396.69	39°41'38.1926"N	80°44'14.2490"W	66.54	87.751	0.33	-0.15	4.80
4300.00	3.630	99.420	4297.77	-33.21	1.78	72.59	1714322.03	14415395.86	39°41'38.1842"N	80°44'14.1709"W	72.62	88.598	0.28	0.19	3.36
4400.00	3.800	109.240	4397.56	-37.62	0.17	78.85	1714328.27	14415394.25	39°41'38.1681"N	80°44'14.0910"W	78.85	89.879	0.66	0.17	9.82
4500.00	3.860	117.010	4497.34	-42.86	-2.45	84.97	1714334.40	14415391.63	39°41'38.1420"N	80°44'14.0127"W	85.01	91.654	0.52	0.06	7.77
4600.00	4.230	117.690	4597.09	-48.70	-5.70	91.24	1714340.66	14415388.39	39°41'38.1098"N	80°44'13.9327"W	91.42	93.573	0.37	0.37	0.68
4700.00	5.590	120.040	4696.72	-55.93	-9.85	98.72	1714348.14	14415384.24	39°41'38.0686"N	80°44'13.8371"W	99.21	95.697	1.37	1.36	2.35
4800.00	5.050	122.320	4796.29	-63.94	-14.64	106.66	1714356.07	14415379.45	39°41'38.0210"N	80°44'13.7358"W	107.66	97.816	0.58	-0.54	2.28
4900.00	3.910	121.610	4895.98	-70.75	-18.78	113.28	1714362.69	14415375.31	39°41'37.9799"N	80°44'13.6512"W	114.82	99.413	1.14	-1.14	-0.71
5000.00	2.890	128.600	4995.80	-76.03	-22.14	118.15	1714367.57	14415371.95	39°41'37.9465"N	80°44'13.5890"W	120.21	100.613	1.10	-1.02	6.99
5100.00	2.070	141.530	5095.71	-80.13	-25.13	121.25	1714370.66	14415368.96	39°41'37.9169"N	80°44'13.5495"W	123.82	101.708	0.99	-0.82	12.93
5200.00	0.490	160.940	5195.68	-82.33	-26.95	122.51	1714371.92	14415367.15	39°41'37.8989"N	80°44'13.5334"W	125.44	102.404	1.62	-1.58	19.41
5300.00	2.540	331.040	5295.65	-80.54	-25.41	121.58	1714370.99	14415368.68	39°41'37.9141"N	80°44'13.5453"W	124.20	101.805	3.02	2.05	170.10
5400.00	3.880	331.810	5395.49	-74.94	-20.49	118.90	1714368.32	14415373.60	39°41'37.9628"N	80°44'13.5793"W	120.66	99.777	1.34	1.34	0.77
5500.00	2.660	11.550	5495.34	-69.78	-15.23	117.77	1714367.18	14415378.85	39°41'38.0148"N	80°44'13.5936"W	118.75	97.370	2.50	-1.22	39.74
5600.00	2.770	13.570	5595.23	-66.22	-10.61	118.80	1714368.22	14415383.47	39°41'38.0605"N	80°44'13.5802"W	119.28	95.104	0.15	0.11	2.02
5700.00	2.360	351.680	5695.13	-62.50	-6.22	119.07	1714368.48	14415387.86	39°41'38.1038"N	80°44'13.5766"W	119.23	92.992	1.05	-0.41	-21.89
5800.00	1.000	334.730	5795.09	-59.70	-3.40	118.40	1714367.81	14415390.68	39°41'38.1317"N	80°44'13.5851"W	118.45	91.644	1.43	-1.36	-16.95

RECEIVED
Office Of Oil and Gas
OCT 02 2024
WV Department of
Environmental Protection



Actual Wellpath Report

Elmer N-16 HU ST01 AWP Proj: 23376'

Page 4 of 12



REFERENCE WELLPATH IDENTIFICATION

Operator	EQT (TUG HILL OPERATING, LLC)	Well	Elmer N-16 HU ST01
Field	Wetzel	API	47-103-03504-0000
Facility	Elmer Pad	Wellbore	Elmer N-16 HU ST01 AWB
Slot	Slot 16	Sidetrack from	Elmer N-16 HU AWP Proj: at 10400.00 MD

WELLPATH DATA (248 stations)

MD [ft]	Inclination [°]	Azimuth [°]	TVD [ft]	Vert Sect [ft]	North [ft]	East [ft]	Grid East [US ft]	Grid North [US ft]	Latitude	Longitude	Closure Dist [ft]	Closure Dir [°]	DLS [°/100ft]	Build Rate [°/100ft]	Turn Rate [°/100ft]
5900.00	0.780	263.350	5895.08	-58.57	-2.69	117.35	1714366.77	14415391.39	39°41'38.1388"N	80°44'13.5985"W	117.38	91.312	1.05	-0.22	-71.38
6000.00	0.790	251.900	5995.07	-58.19	-2.98	116.02	1714365.44	14415391.10	39°41'38.1359"N	80°44'13.6155"W	116.06	91.472	0.16	0.01	-11.45
6100.00	0.770	209.670	6095.06	-58.42	-3.78	115.03	1714364.45	14415390.30	39°41'38.1281"N	80°44'13.6282"W	115.10	91.881	0.56	-0.02	-42.23
6200.00	0.790	227.480	6195.05	-58.94	-4.83	114.19	1714363.61	14415389.25	39°41'38.1177"N	80°44'13.6390"W	114.29	92.421	0.24	0.02	17.81
6300.00	0.910	233.300	6295.04	-59.21	-5.77	113.05	1714362.46	14415388.31	39°41'38.1085"N	80°44'13.6537"W	113.19	92.921	0.15	0.12	5.82
6400.00	0.540	229.450	6395.03	-59.42	-6.55	112.05	1714361.47	14415387.53	39°41'38.1008"N	80°44'13.6664"W	112.24	93.345	0.37	-0.37	-3.85
6500.00	0.410	188.240	6495.03	-59.81	-7.21	111.64	1714361.06	14415386.87	39°41'38.0943"N	80°44'13.6717"W	111.88	93.695	0.36	-0.13	-41.21
6600.00	0.610	170.450	6595.02	-60.60	-8.09	111.68	1714361.10	14415385.99	39°41'38.0856"N	80°44'13.6713"W	111.97	94.143	0.25	0.20	-17.79
6700.00	0.930	165.080	6695.01	-61.89	-9.40	111.98	1714361.39	14415384.69	39°41'38.0726"N	80°44'13.6675"W	112.37	94.798	0.33	0.32	-5.37
6800.00	1.360	162.480	6794.99	-63.84	-11.31	112.54	1714361.96	14415382.77	39°41'38.0537"N	80°44'13.6603"W	113.11	95.741	0.43	0.43	-2.60
6900.00	1.620	161.280	6894.96	-66.40	-13.78	113.35	1714362.77	14415380.30	39°41'38.0292"N	80°44'13.6501"W	114.19	96.933	0.26	0.26	-1.20
7000.00	1.930	159.900	6994.91	-69.46	-16.70	114.39	1714363.80	14415377.38	39°41'38.0004"N	80°44'13.6370"W	115.60	98.309	0.31	0.31	-1.38
7100.00	2.370	158.690	7094.84	-73.17	-20.21	115.72	1714365.13	14415373.88	39°41'37.9656"N	80°44'13.6201"W	117.47	99.908	0.44	0.44	-1.21
7200.00	2.730	158.040	7194.74	-77.59	-24.35	117.36	1714366.77	14415369.74	39°41'37.9247"N	80°44'13.5992"W	119.86	101.720	0.36	0.36	-0.65
7300.00	3.450	157.990	7294.60	-82.94	-29.35	119.38	1714368.79	14415364.75	39°41'37.8753"N	80°44'13.5736"W	122.93	103.811	0.72	0.72	-0.05
7400.00	5.560	151.140	7394.28	-90.78	-36.38	122.84	1714372.26	14415357.72	39°41'37.8057"N	80°44'13.5295"W	128.12	106.496	2.17	2.11	-6.85
7500.00	6.410	148.870	7493.74	-101.20	-45.40	128.07	1714377.48	14415348.70	39°41'37.7164"N	80°44'13.4630"W	135.88	109.519	0.88	0.85	-2.27
7600.00	6.930	150.100	7593.06	-112.81	-55.41	133.96	1714383.37	14415338.69	39°41'37.6173"N	80°44'13.3880"W	144.97	112.471	0.54	0.52	1.23
7700.00	7.910	151.400	7692.22	-125.72	-66.68	140.26	1714389.67	14415327.43	39°41'37.5057"N	80°44'13.3078"W	155.31	115.426	0.99	0.98	1.30
7800.00	9.090	151.340	7791.12	-140.50	-79.65	147.35	1714396.75	14415314.46	39°41'37.3773"N	80°44'13.2177"W	167.50	118.395	1.18	1.18	-0.06
7900.00	13.010	148.370	7889.25	-159.65	-96.17	157.04	1714406.44	14415297.94	39°41'37.2137"N	80°44'13.0943"W	184.15	121.484	3.96	3.92	-2.97
8000.00	16.960	150.300	7985.83	-185.48	-118.44	170.18	1714419.57	14415275.69	39°41'36.9933"N	80°44'12.9271"W	207.33	124.837	3.98	3.95	1.93
8100.00	18.690	149.350	8081.03	-216.08	-144.89	185.57	1714434.96	14415249.25	39°41'36.7314"N	80°44'12.7311"W	235.44	127.982	1.75	1.73	-0.95
8200.00	20.590	146.250	8175.21	-249.61	-173.30	203.51	1714452.89	14415220.85	39°41'36.4502"N	80°44'12.5027"W	267.30	130.416	2.17	1.90	-3.10
8300.00	18.740	142.870	8269.37	-283.01	-200.73	222.98	1714472.35	14415193.43	39°41'36.1785"N	80°44'12.2547"W	300.02	131.994	2.17	-1.85	-3.38
8400.00	11.260	131.330	8365.92	-308.11	-220.02	240.03	1714489.40	14415174.15	39°41'35.9874"N	80°44'12.0372"W	325.61	132.509	8.02	-7.48	-11.54
8500.00	11.810	130.490	8463.90	-326.84	-233.11	255.15	1714504.51	14415161.06	39°41'35.8576"N	80°44'11.8444"W	345.60	132.416	0.58	0.55	-0.84
8600.00	13.880	135.440	8561.39	-347.94	-248.30	271.35	1714520.70	14415145.88	39°41'35.7070"N	80°44'11.6377"W	367.81	132.461	2.34	2.07	4.95
8700.00	16.690	139.780	8657.85	-373.54	-267.82	289.04	1714538.39	14415126.37	39°41'35.5136"N	80°44'11.4121"W	394.04	132.817	3.03	2.81	4.34
8800.00	19.850	143.180	8752.80	-404.42	-292.38	308.49	1714557.83	14415101.82	39°41'35.2703"N	80°44'11.1642"W	425.04	133.464	3.33	3.16	3.40

RECEIVED
Office Of Oil and Gas
OCT 02 2024
WV Department of
Environmental Protection



Actual Wellpath Report

Elmer N-16 HU ST01 AWP Proj: 23376'

Page 5 of 12



REFERENCE WELLPATH IDENTIFICATION				
Operator	EQT (TUG HILL OPERATING, LLC)		Well	Elmer N-16 HU ST01
Field	Wetzel		API	47-103-03504-0000
Facility	Elmer Pad		Wellbore	Elmer N-16 HU ST01 AWB
Slot	Slot 16		Sidetrack from	Elmer N-16 HU AWP Proj: at 10400.00 MD

WELLPATH DATA (248 stations)

MD [ft]	Inclination [°]	Azimuth [°]	TVD [ft]	Vert Sect [ft]	North [ft]	East [ft]	Grid East [US ft]	Grid North [US ft]	Latitude	Longitude	Closure Dist [ft]	Closure Dir [°]	DLS [°/100ft]	Build Rate [°/100ft]	Turn Rate [°/100ft]
8900.00	22.250	145.420	8846.12	-440.06	-321.56	329.42	1714578.75	14415072.64	39°41'34.9812"N	80°44'10.8976"W	460.35	134.309	2.53	2.40	2.24
9000.00	24.510	145.110	8937.90	-479.52	-354.17	352.03	1714601.35	14415040.05	39°41'34.6584"N	80°44'10.6096"W	499.36	135.174	2.26	2.26	-0.31
9100.00	25.890	145.760	9028.38	-521.87	-389.23	376.18	1714625.49	14415005.00	39°41'34.3111"N	80°44'10.3019"W	541.31	135.977	1.41	1.38	0.65
9200.00	26.450	145.210	9118.13	-565.74	-425.57	401.17	1714650.47	14414968.68	39°41'33.9513"N	80°44'9.9836"W	584.85	136.691	0.61	0.56	-0.55
9300.00	28.690	146.600	9206.77	-611.80	-463.91	427.10	1714676.39	14414930.36	39°41'33.5717"N	80°44'9.6534"W	630.57	137.366	2.33	2.24	1.39
9400.00	30.910	147.900	9293.54	-661.37	-505.71	453.96	1714703.24	14414888.57	39°41'33.1577"N	80°44'9.3113"W	679.58	138.087	2.31	2.22	1.30
9500.00	33.370	147.330	9378.21	-714.45	-550.63	482.46	1714731.73	14414843.67	39°41'32.7130"N	80°44'8.9484"W	732.09	138.775	2.48	2.46	-0.57
9600.00	35.980	147.990	9460.45	-771.21	-598.70	512.88	1714762.14	14414795.62	39°41'32.2371"N	80°44'8.5611"W	788.34	139.414	2.64	2.61	0.66
9700.00	34.830	147.290	9541.95	-829.02	-647.63	543.89	1714793.13	14414746.70	39°41'31.7525"N	80°44'8.1663"W	845.72	139.976	1.22	-1.15	-0.70
9800.00	33.280	146.790	9624.80	-884.86	-694.62	574.35	1714823.58	14414699.73	39°41'31.2873"N	80°44'7.7784"W	901.32	140.414	1.58	-1.55	-0.50
9900.00	34.200	148.830	9707.96	-940.29	-741.63	603.92	1714853.14	14414652.75	39°41'30.8219"N	80°44'7.4019"W	956.42	140.843	1.46	0.92	2.04
10000.00	35.720	149.370	9789.91	-997.54	-790.79	633.34	1714882.55	14414603.60	39°41'30.3351"N	80°44'7.0274"W	1013.15	141.309	1.55	1.52	0.54
10100.00	37.130	148.940	9870.37	-1056.87	-841.77	663.79	1714912.99	14414552.64	39°41'29.8304"N	80°44'6.6398"W	1072.00	141.742	1.43	1.41	-0.43
10200.00	36.450	149.650	9950.46	-1116.72	-893.26	694.37	1714943.56	14414501.17	39°41'29.3207"N	80°44'6.2505"W	1131.40	142.140	0.80	-0.68	0.71
10300.00	36.740	146.570	10030.75	-1176.22	-943.86	725.86	1714975.03	14414450.59	39°41'28.8197"N	80°44'5.8496"W	1190.69	142.438	1.86	0.29	-3.08
10400.00	35.900	145.440	10111.32	-1235.19	-992.97	758.97	1715008.13	14414401.51	39°41'28.3334"N	80°44'5.4279"W	1249.81	142.608	1.07	-0.84	-1.13
10455.98	36.040	146.500	10156.63	-1267.92	-1020.22	777.37	1715026.52	14414374.27	39°41'28.0636"N	80°44'5.1936"W	1282.63	142.694	1.14	0.25	1.89
10549.98	34.200	148.520	10233.52	-1321.87	-1065.81	806.43	1715055.57	14414328.69	39°41'27.6121"N	80°44'4.8236"W	1336.52	142.887	2.31	-1.96	2.15
10642.98	30.680	149.050	10311.99	-1371.69	-1108.46	832.29	1715081.42	14414286.06	39°41'27.1898"N	80°44'4.4944"W	1386.14	143.099	3.80	-3.78	0.57
10737.98	27.080	149.580	10395.16	-1417.54	-1147.91	855.71	1715104.83	14414246.63	39°41'26.7993"N	80°44'4.1963"W	1431.76	143.297	3.80	-3.79	0.56
10831.98	23.250	149.400	10480.22	-1457.48	-1182.34	876.00	1715125.11	14414212.21	39°41'26.4584"N	80°44'3.9381"W	1471.50	143.465	4.08	-4.07	-0.19
10863.98	22.460	149.400	10509.71	-1469.90	-1193.04	882.33	1715131.44	14414201.51	39°41'26.3525"N	80°44'3.8576"W	1483.86	143.515	2.47	-2.47	0.00
10914.00	21.380	149.780	10556.12	-1488.56	-1209.14	891.78	1715140.89	14414185.42	39°41'26.1931"N	80°44'3.7372"W	1502.43	143.590	2.18	-2.16	0.76
11007.00	19.390	153.300	10643.29	-1520.94	-1237.58	907.25	1715156.35	14414156.99	39°41'25.9116"N	80°44'3.5404"W	1534.51	143.756	2.51	-2.14	3.78
11099.00	15.590	155.480	10731.02	-1548.55	-1262.49	919.25	1715168.34	14414132.09	39°41'25.6651"N	80°44'3.3879"W	1561.69	143.941	4.19	-4.13	2.37
11199.00	8.240	150.130	10828.80	-1569.14	-1280.95	928.40	1715177.50	14414113.64	39°41'25.4824"N	80°44'3.2714"W	1582.01	144.066	7.42	-7.35	-5.35
11285.00	4.760	151.870	10914.24	-1578.88	-1289.44	933.16	1715182.25	14414105.15	39°41'25.3983"N	80°44'3.2110"W	1591.68	144.107	4.05	-4.05	2.02
11378.00	2.650	339.050	11007.16	-1580.61	-1290.84	934.21	1715183.30	14414103.75	39°41'25.3844"N	80°44'3.1976"W	1593.43	144.106	7.95	-2.27	-185.83
11471.00	10.900	330.850	11099.43	-1569.66	-1281.14	929.15	1715178.24	14414113.45	39°41'25.4805"N	80°44'3.2619"W	1582.60	144.048	8.91	8.87	-8.82
11563.00	15.290	325.430	11189.02	-1548.89	-1263.54	918.02	1715167.12	14414131.04	39°41'25.6547"N	80°44'3.4036"W	1561.83	144.000	4.95	4.77	-5.89

RECEIVED
Office Of Oil and Gas
OCT 02 2024
WV Department of
Environmental Protection



Actual Wellpath Report

Elmer N-16 HU ST01 AWP Proj: 23376'

Page 6 of 12



REFERENCE WELLPATH IDENTIFICATION

Operator	EQT (TUG HILL OPERATING, LLC)	Well	Elmer N-16 HU ST01
Field	Wetzel	API	47-103-03504-0000
Facility	Elmer Pad	Wellbore	Elmer N-16 HU ST01 AWB
Slot	Slot 16	Sidetrack from	Elmer N-16 HU AWP Proj: at 10400.00 MD

WELLPATH DATA (248 stations)

MD [ft]	Inclination [°]	Azimuth [°]	TVD [ft]	Vert Sect [ft]	North [ft]	East [ft]	Grid East [US ft]	Grid North [US ft]	Latitude	Longitude	Closure Dist [ft]	Closure Dir [°]	DLS [°/100ft]	Build Rate [°/100ft]	Turn Rate [°/100ft]
11657.00	20.400	334.710	11278.48	-1520.18	-1238.50	903.98	1715153.08	14414156.07	39°41'25.9026"N	80°44'3.5823"W	1533.32	143.874	6.21	5.44	9.87
11750.00	27.550	329.760	11363.41	-1482.45	-1205.22	886.20	1715135.31	14414189.34	39°41'26.2320"N	80°44'3.8085"W	1495.96	143.673	7.98	7.69	-5.32
11844.00	35.210	325.350	11443.61	-1433.69	-1164.08	859.80	1715108.92	14414230.46	39°41'26.6394"N	80°44'4.1446"W	1447.18	143.550	8.50	8.15	-4.69
11937.00	41.530	328.050	11516.50	-1376.19	-1115.81	828.21	1715077.34	14414278.71	39°41'27.1173"N	80°44'4.5469"W	1389.59	143.415	7.03	6.80	2.90
12030.00	48.160	333.640	11582.42	-1310.70	-1058.53	796.46	1715045.61	14414335.97	39°41'27.6844"N	80°44'4.9508"W	1324.70	143.041	8.29	7.13	6.01
12123.00	56.770	337.700	11639.05	-1237.26	-991.35	766.26	1715015.41	14414403.12	39°41'28.3491"N	80°44'5.3347"W	1252.97	142.298	9.88	9.26	4.37
12216.00	65.390	337.680	11683.98	-1156.43	-916.12	735.38	1714984.55	14414478.33	39°41'29.0936"N	80°44'5.7268"W	1174.76	141.245	9.27	9.27	-0.02
12309.00	71.930	336.560	11717.80	-1070.29	-836.36	701.71	1714950.89	14414558.05	39°41'29.8828"N	80°44'6.1546"W	1091.74	140.003	7.12	7.03	-1.20
12402.00	75.140	333.070	11744.17	-981.29	-755.69	663.75	1714912.94	14414638.69	39°41'30.6812"N	80°44'6.6371"W	1005.79	138.706	4.99	3.45	-3.75
12495.00	82.980	330.290	11761.80	-890.06	-675.39	620.44	1714869.66	14414718.96	39°41'31.4760"N	80°44'7.1881"W	917.11	137.428	8.93	8.43	-2.99
12587.00	90.500	329.210	11767.03	-798.31	-596.11	574.20	1714823.43	14414798.21	39°41'32.2609"N	80°44'7.7766"W	827.68	136.072	8.26	8.17	-1.17
12680.00	91.460	329.580	11765.44	-705.38	-516.07	526.86	1714776.11	14414878.21	39°41'33.0532"N	80°44'8.3792"W	737.50	134.407	1.11	1.03	0.40
12774.00	91.890	329.830	11762.69	-611.46	-434.95	479.46	1714728.73	14414959.31	39°41'33.8564"N	80°44'8.9825"W	647.35	132.213	0.53	0.46	0.27
12867.00	91.830	329.920	11759.68	-518.54	-354.55	432.81	1714682.10	14415039.67	39°41'34.6523"N	80°44'9.5762"W	559.49	129.324	0.12	-0.06	0.10
12960.00	91.580	328.520	11756.91	-425.65	-274.69	385.24	1714634.55	14415119.50	39°41'35.4429"N	80°44'10.1817"W	473.14	125.490	1.53	-0.27	-1.51
13052.00	91.360	329.830	11754.55	-333.75	-195.71	338.11	1714587.44	14415198.45	39°41'36.2248"N	80°44'10.7816"W	390.67	120.064	1.44	-0.24	1.42
13145.00	90.930	328.310	11752.69	-240.85	-115.95	290.32	1714539.67	14415278.17	39°41'37.0144"N	80°44'11.3900"W	312.62	111.772	1.70	-0.46	-1.63
13238.00	90.350	324.750	11751.65	-148.21	-38.39	239.05	1714488.41	14415355.70	39°41'37.7824"N	80°44'12.0431"W	242.11	99.124	3.88	-0.62	-3.83
13330.00	90.570	327.380	11750.91	-56.61	37.93	187.69	1714437.08	14415431.99	39°41'38.5381"N	80°44'12.6971"W	191.49	78.576	2.87	0.24	2.86
13423.00	90.260	331.090	11750.24	36.30	117.82	140.13	1714389.54	14415511.86	39°41'39.3291"N	80°44'13.3026"W	183.08	49.943	4.00	-0.33	3.99
13517.00	91.090	331.880	11749.13	130.30	200.41	95.26	1714344.68	14415594.41	39°41'40.1466"N	80°44'13.8735"W	221.90	25.423	1.22	0.88	0.84
13610.00	90.690	331.910	11747.69	223.28	282.44	51.46	1714300.90	14415676.41	39°41'40.9585"N	80°44'14.4308"W	287.09	10.325	0.43	-0.43	0.03
13703.00	90.840	330.390	11746.44	316.27	363.88	6.59	1714256.04	14415757.82	39°41'41.7648"N	80°44'15.0018"W	363.94	1.037	1.64	0.16	-1.63
13796.00	90.990	330.730	11744.96	409.25	444.87	-39.12	1714210.36	14415838.77	39°41'42.5664"N	80°44'15.5834"W	446.58	354.975	0.40	0.16	0.37
13889.00	91.300	331.390	11743.10	502.23	526.24	-84.11	1714165.38	14415920.11	39°41'43.3719"N	80°44'16.1560"W	532.91	350.919	0.78	0.33	0.71
13981.00	91.420	332.570	11740.92	594.19	607.43	-127.32	1714122.19	14416001.27	39°41'44.1755"N	80°44'16.7057"W	620.63	348.162	1.29	0.13	1.28
14074.00	91.180	330.560	11738.81	687.16	689.18	-171.59	1714077.94	14416082.99	39°41'44.9848"N	80°44'17.2690"W	710.22	346.019	2.18	-0.26	-2.16
14167.00	91.150	328.570	11736.92	780.09	769.35	-218.69	1714030.86	14416163.12	39°41'45.7784"N	80°44'17.8685"W	799.82	344.132	2.14	-0.03	-2.14
14260.00	91.520	330.560	11734.75	873.02	849.51	-265.78	1713983.79	14416243.25	39°41'46.5719"N	80°44'18.4680"W	890.11	342.627	2.18	0.40	2.14
14354.00	92.290	330.800	11731.62	966.96	931.42	-311.78	1713937.80	14416325.13	39°41'47.3828"N	80°44'19.0535"W	982.22	341.492	0.86	0.82	0.26

RECEIVED
Office Of Oil and Gas
OCT 02 2024
WV Department of
Environmental Protection



Actual Wellpath Report

Elmer N-16 HU ST01 AWP Proj: 23376'

Page 7 of 12



REFERENCE WELLPATH IDENTIFICATION			
Operator	EQT (TUG HILL OPERATING, LLC)	Well	Elmer N-16 HU ST01
Field	Wetzel	API	47-103-03504-0000
Facility	Elmer Pad	Wellbore	Elmer N-16 HU ST01 AWB
Slot	Slot 16	Sidetrack from	Elmer N-16 HU AWP Proj: at 10400.00 MD

WELLPATH DATA (248 stations)

MD [ft]	Inclination [°]	Azimuth [°]	TVD [ft]	Vert Sect [ft]	North [ft]	East [ft]	Grid East [US ft]	Grid North [US ft]	Latitude	Longitude	Closure Dist [ft]	Closure Dir [°]	DLS [°/100ft]	Build Rate [°/100ft]	Turn Rate [°/100ft]
14447.00	90.900	328.550	11729.04	1059.87	1011.65	-358.72	1713890.88	14416405.33	39°41'48.1771"N	80°44'19.6509"W	1073.37	340.476	2.84	-1.49	-2.42
14539.00	90.960	332.450	11727.54	1151.83	1091.70	-404.01	1713845.61	14416485.35	39°41'48.9695"N	80°44'20.2273"W	1164.06	339.692	4.24	0.07	4.24
14632.00	90.810	331.000	11726.11	1244.82	1173.59	-448.06	1713801.58	14416567.21	39°41'49.7801"N	80°44'20.7878"W	1256.21	339.104	1.57	-0.16	-1.56
14725.00	90.930	332.470	11724.69	1337.80	1255.49	-492.09	1713757.57	14416649.08	39°41'50.5907"N	80°44'21.3481"W	1348.49	338.597	1.59	0.13	1.58
14819.00	90.810	330.530	11723.27	1431.79	1338.09	-536.93	1713712.74	14416731.64	39°41'51.4083"N	80°44'21.9187"W	1441.80	338.136	2.07	-0.13	-2.06
14912.00	90.720	330.190	11722.02	1524.76	1418.91	-582.92	1713666.77	14416812.43	39°41'52.2084"N	80°44'22.5041"W	1533.98	337.666	0.38	-0.10	-0.37
15006.00	90.870	333.010	11720.72	1618.74	1501.58	-627.62	1713622.08	14416895.07	39°41'53.0267"N	80°44'23.0729"W	1627.47	337.316	3.00	0.16	3.00
15099.00	90.560	336.520	11719.56	1711.56	1585.69	-667.26	1713582.46	14416979.14	39°41'53.8590"N	80°44'23.5769"W	1720.36	337.178	3.79	-0.33	3.77
15192.00	90.900	332.750	11718.37	1804.38	1669.70	-707.09	1713542.65	14417063.12	39°41'54.6904"N	80°44'24.0833"W	1813.25	337.048	4.07	0.37	-4.05
15286.00	90.560	328.840	11717.18	1898.35	1751.73	-752.95	1713496.81	14417145.11	39°41'55.5024"N	80°44'24.6669"W	1906.69	336.740	4.17	-0.36	-4.16
15379.00	90.870	328.110	11716.01	1991.23	1830.99	-801.57	1713448.21	14417224.35	39°41'56.2872"N	80°44'25.2860"W	1998.76	336.357	0.85	0.33	-0.78
15472.00	90.410	327.810	11714.98	2084.05	1909.82	-850.90	1713398.89	14417303.15	39°41'57.0676"N	80°44'25.9143"W	2090.80	335.985	0.59	-0.49	-0.32
15565.00	90.840	327.370	11713.96	2176.84	1988.33	-900.74	1713349.07	14417381.63	39°41'57.8449"N	80°44'26.5490"W	2182.84	335.629	0.66	0.46	-0.47
15659.00	91.150	328.300	11712.33	2270.65	2067.89	-950.78	1713299.06	14417461.15	39°41'58.6326"N	80°44'27.1862"W	2276.00	335.308	1.04	0.33	0.99
15752.00	90.900	327.620	11710.67	2363.47	2146.71	-1000.11	1713249.75	14417539.94	39°41'59.4130"N	80°44'27.8144"W	2368.25	335.020	0.78	-0.27	-0.73
15845.00	90.900	327.610	11709.20	2456.26	2225.24	-1049.91	1713199.96	14417618.44	39°42'0.1905"N	80°44'28.4487"W	2460.49	334.741	0.01	0.00	-0.01
15937.00	91.020	328.160	11707.66	2548.07	2303.15	-1098.82	1713151.08	14417696.32	39°42'0.9619"N	80°44'29.0715"W	2551.84	334.495	0.61	0.13	0.60
16030.00	90.900	327.820	11706.11	2640.90	2382.00	-1148.10	1713101.81	14417775.14	39°42'1.7425"N	80°44'29.6992"W	2644.25	334.266	0.39	-0.13	-0.37
16123.00	90.930	327.980	11704.62	2733.71	2460.77	-1197.52	1713052.42	14417853.88	39°42'2.5224"N	80°44'30.3285"W	2736.68	334.050	0.18	0.03	0.17
16216.00	91.210	329.960	11702.88	2826.61	2540.44	-1245.45	1713004.51	14417933.52	39°42'3.3112"N	80°44'30.9387"W	2829.31	333.884	2.15	0.30	2.13
16310.00	90.930	329.890	11701.13	2920.56	2621.77	-1292.55	1712957.43	14418014.82	39°42'4.1163"N	80°44'31.5383"W	2923.08	333.757	0.31	-0.30	-0.07
16402.00	91.050	331.080	11699.54	3012.54	2701.82	-1337.86	1712912.13	14418094.83	39°42'4.9087"N	80°44'32.1151"W	3014.92	333.657	1.30	0.13	1.29
16496.00	91.020	331.070	11697.84	3106.52	2784.08	-1383.32	1712866.69	14418177.06	39°42'5.7229"N	80°44'32.6937"W	3108.81	333.579	0.03	-0.03	-0.01
16589.00	90.870	330.640	11696.31	3199.50	2865.30	-1428.61	1712821.42	14418258.24	39°42'6.5268"N	80°44'33.2701"W	3201.69	333.500	0.49	-0.16	-0.46
16682.00	91.140	329.950	11694.68	3292.47	2946.06	-1474.68	1712775.36	14418338.98	39°42'7.3263"N	80°44'33.8567"W	3294.54	333.409	0.80	0.29	-0.74
16775.00	91.240	330.740	11692.74	3385.44	3026.86	-1520.69	1712729.37	14418419.75	39°42'8.1262"N	80°44'34.4423"W	3387.39	333.325	0.86	0.11	0.85
16868.00	91.270	331.360	11690.71	3478.41	3108.22	-1565.69	1712684.39	14418501.07	39°42'8.9315"N	80°44'35.0151"W	3480.29	333.264	0.67	0.03	0.67
16961.00	91.390	331.600	11688.55	3571.39	3189.91	-1610.08	1712640.01	14418582.73	39°42'9.7401"N	80°44'35.5801"W	3573.22	333.218	0.29	0.13	0.26
17054.00	91.020	330.140	11686.59	3664.36	3271.13	-1655.35	1712594.77	14418663.92	39°42'10.5440"N	80°44'36.1562"W	3666.12	333.158	1.62	-0.40	-1.57
17147.00	90.960	328.070	11684.99	3757.27	3350.92	-1703.09	1712547.05	14418743.67	39°42'11.3339"N	80°44'36.7641"W	3758.88	333.058	2.23	-0.06	-2.23

RECEIVED
Office Of Oil and Gas
OCT 02 2024
WV Department of
Environmental Protection



Actual Wellpath Report

Elmer N-16 HU ST01 AWP Proj: 23376'

Page 8 of 12



REFERENCE WELLPATH IDENTIFICATION

Operator	EQT (TUG HILL OPERATING, LLC)	Well	Elmer N-16 HU ST01
Field	Wetzel	API	47-103-03504-0000
Facility	Elmer Pad	Wellbore	Elmer N-16 HU ST01 AWP
Slot	Slot 16	Sidetrack from	Elmer N-16 HU AWP Proj: at 10400.00 MD

WELLPATH DATA (248 stations)

MD [ft]	Inclination [°]	Azimuth [°]	TVD [ft]	Vert Sect [ft]	North [ft]	East [ft]	Grid East [US ft]	Grid North [US ft]	Latitude	Longitude	Closure Dist [ft]	Closure Dir [°]	DLS [°/100ft]	Build Rate [°/100ft]	Turn Rate [°/100ft]
17240.00	90.740	326.260	11683.61	3850.00	3429.05	-1753.51	1712496.65	14418821.77	39°42'12.1075"N	80°44'37.4063"W	3851.39	332.916	1.96	-0.24	-1.95
17333.00	90.830	326.730	11682.33	3942.65	3506.59	-1804.84	1712445.34	14418899.28	39°42'12.8752"N	80°44'38.0603"W	3943.81	332.765	0.51	0.10	0.51
17427.00	90.770	332.420	11681.02	4036.56	3587.60	-1852.42	1712397.78	14418980.26	39°42'13.6772"N	80°44'38.6660"W	4037.62	332.691	6.05	-0.06	6.05
17520.00	90.710	335.460	11679.82	4129.45	3671.13	-1893.26	1712356.94	14419063.76	39°42'14.5039"N	80°44'39.1856"W	4130.58	332.719	3.27	-0.06	3.27
17612.00	90.560	338.260	11678.80	4221.01	3755.72	-1929.41	1712320.81	14419148.31	39°42'15.3408"N	80°44'39.6450"W	4222.33	332.809	3.05	-0.16	3.04
17705.00	90.530	336.470	11677.91	4313.50	3841.55	-1965.20	1712285.04	14419234.11	39°42'16.1900"N	80°44'40.0998"W	4315.03	332.907	1.92	-0.03	-1.92
17799.00	89.880	333.510	11677.58	4407.30	3926.72	-2004.94	1712245.32	14419319.25	39°42'17.0329"N	80°44'40.6051"W	4408.96	332.952	3.22	-0.69	-3.15
17892.00	90.800	331.940	11677.02	4500.27	4009.38	-2047.55	1712202.72	14419401.87	39°42'17.8510"N	80°44'41.1474"W	4501.95	332.947	1.96	0.99	-1.69
17985.00	90.800	331.610	11675.73	4593.26	4091.31	-2091.53	1712158.76	14419483.77	39°42'18.6620"N	80°44'41.7071"W	4594.92	332.923	0.35	0.00	-0.35
18079.00	90.740	330.290	11674.46	4687.24	4173.48	-2137.17	1712113.13	14419565.90	39°42'19.4753"N	80°44'42.2880"W	4688.86	332.884	1.41	-0.06	-1.40
18172.00	90.680	330.190	11673.31	4780.22	4254.20	-2183.33	1712066.99	14419646.60	39°42'20.2744"N	80°44'42.8757"W	4781.75	332.832	0.13	-0.06	-0.11
18265.00	91.110	328.850	11671.86	4873.16	4334.34	-2230.50	1712019.85	14419726.70	39°42'21.0677"N	80°44'43.4762"W	4874.59	332.769	1.51	0.46	-1.44
18358.00	90.830	329.290	11670.28	4966.07	4414.10	-2278.29	1711972.07	14419806.44	39°42'21.8573"N	80°44'44.0849"W	4967.38	332.700	0.56	-0.30	0.47
18451.00	90.900	328.880	11668.88	5058.98	4493.88	-2326.06	1711924.32	14419886.18	39°42'22.6471"N	80°44'44.6932"W	5060.19	332.634	0.45	0.08	-0.44
18544.00	90.900	328.960	11667.42	5151.88	4573.52	-2374.07	1711876.33	14419965.79	39°42'23.4355"N	80°44'45.3046"W	5152.99	332.567	0.09	0.00	0.09
18638.00	91.020	329.690	11665.84	5245.81	4654.36	-2422.02	1711828.40	14420046.59	39°42'24.2357"N	80°44'45.9151"W	5246.83	332.509	0.79	0.13	0.78
18730.00	90.690	327.640	11664.47	5337.69	4732.92	-2469.85	1711780.58	14420125.13	39°42'25.0135"N	80°44'46.5244"W	5338.61	332.442	2.26	-0.36	-2.23
18823.00	91.210	327.480	11662.93	5430.47	4811.40	-2519.73	1711730.72	14420203.58	39°42'25.7905"N	80°44'47.1597"W	5431.26	332.359	0.59	0.56	-0.17
18916.00	91.820	329.260	11660.47	5523.31	4890.55	-2568.49	1711681.99	14420282.70	39°42'26.5741"N	80°44'47.7807"W	5524.01	332.292	2.02	0.66	1.91
19009.00	91.050	329.010	11658.14	5616.21	4970.36	-2616.18	1711634.31	14420362.47	39°42'27.3641"N	80°44'48.3880"W	5616.84	332.240	0.87	-0.83	-0.27
19102.00	90.990	329.130	11656.48	5709.12	5050.12	-2663.97	1711586.54	14420442.20	39°42'28.1537"N	80°44'48.9967"W	5709.68	332.188	0.14	-0.06	0.13
19195.00	90.960	329.940	11654.90	5802.05	5130.27	-2711.12	1711539.41	14420522.32	39°42'28.9471"N	80°44'49.5970"W	5802.57	332.146	0.87	-0.03	0.87
19288.00	91.020	329.560	11653.30	5895.00	5210.59	-2757.96	1711492.59	14420602.61	39°42'29.7422"N	80°44'50.1935"W	5895.48	332.108	0.41	0.06	-0.41
19381.00	90.960	329.420	11651.69	5987.94	5290.70	-2805.17	1711445.40	14420682.69	39°42'30.5353"N	80°44'50.7947"W	5988.37	332.067	0.16	-0.06	-0.15
19475.00	90.870	329.770	11650.19	6081.88	5371.77	-2852.74	1711397.85	14420763.72	39°42'31.3377"N	80°44'51.4004"W	6082.27	332.029	0.38	-0.10	0.37
19568.00	90.840	330.640	11648.80	6174.85	5452.46	-2898.95	1711351.66	14420844.38	39°42'32.1365"N	80°44'51.9887"W	6175.21	332.001	0.94	-0.03	0.94
19660.00	90.990	329.930	11647.33	6266.82	5532.35	-2944.54	1711306.08	14420924.24	39°42'32.9273"N	80°44'52.5693"W	6267.16	331.976	0.79	0.16	-0.77
19754.00	91.090	330.530	11645.62	6360.78	5613.93	-2991.21	1711259.44	14421005.79	39°42'33.7349"N	80°44'53.1634"W	6361.10	331.950	0.65	0.11	0.64
19848.00	90.780	331.070	11644.09	6454.77	5695.98	-3037.06	1711213.60	14421087.80	39°42'34.5470"N	80°44'53.7472"W	6455.07	331.934	0.66	-0.33	0.57
19941.00	90.840	330.930	11642.78	6547.75	5777.31	-3082.14	1711168.54	14421169.10	39°42'35.3520"N	80°44'54.3211"W	6548.05	331.920	0.16	0.06	-0.15

RECEIVED
Office Of Oil and Gas
OCT 02 2024
WV Department of
Environmental Protection



Actual Wellpath Report

Elmer N-16 HU ST01 AWP Proj: 23376'
Page 9 of 12



REFERENCE WELLPATH IDENTIFICATION

Operator	EQT (TUG HILL OPERATING, LLC)	Well	Elmer N-16 HU ST01
Field	Wetzel	API	47-103-03504-0000
Facility	Elmer Pad	Wellbore	Elmer N-16 HU ST01 AWB
Slot	Slot 16	Sidetrack from	Elmer N-16 HU AWP Proj: at 10400.00 MD

WELLPATH DATA (248 stations)

MD [ft]	Inclination [°]	Azimuth [°]	TVD [ft]	Vert Sect [ft]	North [ft]	East [ft]	Grid East [US ft]	Grid North [US ft]	Latitude	Longitude	Closure Dist [ft]	Closure Dir [°]	DLS [°/100ft]	Build Rate [°/100ft]	Turn Rate [°/100ft]
20034.00	90.990	331.700	11641.29	6640.74	5858.88	-3126.78	1711123.92	14421250.65	39°42'36.1594"N	80°44'54.8893"W	6641.03	331.912	0.84	0.16	0.83
20127.00	90.990	330.870	11639.68	6733.73	5940.43	-3171.45	1711079.26	14421332.16	39°42'36.9666"N	80°44'55.4581"W	6734.01	331.903	0.89	0.00	-0.89
20221.00	91.330	332.140	11637.78	6827.71	6023.03	-3216.29	1711034.45	14421414.72	39°42'37.7841"N	80°44'56.0288"W	6827.98	331.898	1.40	0.36	1.35
20313.00	91.670	332.470	11635.37	6919.66	6104.46	-3259.03	1710991.72	14421496.12	39°42'38.5901"N	80°44'56.5728"W	6919.95	331.903	0.51	0.37	0.36
20406.00	90.960	332.280	11633.24	7012.62	6186.84	-3302.14	1710948.63	14421578.47	39°42'39.4053"N	80°44'57.1215"W	7012.92	331.910	0.79	-0.76	-0.20
20498.00	90.810	331.720	11631.82	7104.61	6268.06	-3345.33	1710905.46	14421659.66	39°42'40.2092"N	80°44'57.6712"W	7104.91	331.911	0.63	-0.16	-0.61
20593.00	90.960	332.520	11630.35	7199.59	6352.02	-3389.75	1710861.06	14421743.59	39°42'41.0402"N	80°44'58.2366"W	7199.90	331.913	0.86	0.16	0.84
20687.00	90.990	331.070	11628.75	7293.57	6434.84	-3434.17	1710816.65	14421826.38	39°42'41.8600"N	80°44'58.8020"W	7293.88	331.912	1.54	0.03	-1.54
20780.00	91.020	330.860	11627.12	7386.55	6516.14	-3479.30	1710771.54	14421907.64	39°42'42.6647"N	80°44'59.3766"W	7386.85	331.900	0.23	0.03	-0.23
20873.00	91.020	330.910	11625.46	7479.53	6597.38	-3524.54	1710726.32	14421988.85	39°42'43.4688"N	80°44'59.9526"W	7479.83	331.887	0.05	0.00	0.05
20966.00	91.120	330.990	11623.73	7572.51	6678.67	-3569.69	1710681.18	14422070.10	39°42'44.2734"N	80°45'0.5275"W	7572.80	331.876	0.14	0.11	0.09
21059.00	91.020	331.810	11621.99	7665.50	6760.30	-3614.20	1710636.69	14422151.71	39°42'45.0814"N	80°45'1.0941"W	7665.78	331.870	0.89	-0.11	0.88
21151.00	90.900	331.340	11620.45	7757.48	6841.20	-3657.99	1710592.92	14422232.57	39°42'45.8821"N	80°45'1.6515"W	7757.76	331.867	0.53	-0.13	-0.51
21245.00	90.840	331.140	11619.02	7851.47	6923.60	-3703.21	1710547.72	14422314.94	39°42'46.6976"N	80°45'2.2273"W	7851.75	331.859	0.22	-0.06	-0.21
21339.00	91.020	331.530	11617.50	7945.46	7006.06	-3748.29	1710502.65	14422397.37	39°42'47.5139"N	80°45'2.8012"W	7945.73	331.853	0.46	0.19	0.41
21432.00	90.900	331.840	11615.94	8038.44	7087.92	-3792.40	1710458.56	14422479.20	39°42'48.3241"N	80°45'3.3627"W	8038.72	331.851	0.36	-0.13	0.33
21524.00	90.960	331.230	11614.44	8130.43	7168.79	-3836.24	1710414.74	14422560.03	39°42'49.1245"N	80°45'3.9209"W	8130.70	331.847	0.67	0.07	-0.66
21618.00	90.810	330.430	11612.99	8224.42	7250.86	-3882.05	1710368.95	14422642.07	39°42'49.9368"N	80°45'4.5041"W	8224.68	331.836	0.87	-0.16	-0.85
21710.00	90.870	329.690	11611.64	8316.38	7330.57	-3927.96	1710323.05	14422721.75	39°42'50.7259"N	80°45'5.0888"W	8316.62	331.816	0.81	0.07	-0.80
21803.00	90.930	328.280	11610.18	8409.29	7410.27	-3975.87	1710275.16	14422801.41	39°42'51.5148"N	80°45'5.6991"W	8409.50	331.785	1.52	0.06	-1.52
21896.00	90.930	329.400	11608.67	8502.18	7489.84	-4023.99	1710227.06	14422880.95	39°42'52.3025"N	80°45'6.3120"W	8502.36	331.753	1.20	0.00	1.20
21990.00	91.020	329.670	11607.07	8596.12	7570.85	-4071.64	1710179.43	14422961.93	39°42'53.1044"N	80°45'6.9189"W	8596.28	331.728	0.30	0.10	0.29
22083.00	90.780	329.430	11605.61	8689.06	7651.01	-4118.77	1710132.32	14423042.06	39°42'53.8979"N	80°45'7.5191"W	8689.20	331.705	0.36	-0.26	-0.26
22176.00	91.050	329.950	11604.13	8782.01	7731.29	-4165.69	1710085.41	14423122.31	39°42'54.6925"N	80°45'8.1168"W	8782.13	331.684	0.63	0.29	0.56
22270.00	90.840	329.880	11602.58	8875.96	7812.61	-4212.81	1710038.32	14423203.60	39°42'55.4975"N	80°45'8.7168"W	8876.07	331.665	0.24	-0.22	-0.07
22361.00	90.590	330.250	11601.44	8966.93	7891.47	-4258.22	1709992.93	14423282.42	39°42'56.2781"N	80°45'9.2951"W	8967.03	331.649	0.49	-0.27	0.41
22454.00	90.560	329.700	11600.51	9059.90	7971.98	-4304.75	1709946.42	14423362.91	39°42'57.0751"N	80°45'9.8877"W	9059.99	331.632	0.59	-0.03	-0.59
22548.00	90.650	328.790	11599.52	9153.83	8052.76	-4352.81	1709898.37	14423443.65	39°42'57.8746"N	80°45'10.4999"W	9153.90	331.607	0.97	0.10	-0.97
22641.00	90.750	328.660	11598.38	9246.72	8132.24	-4401.09	1709850.11	14423523.10	39°42'58.6614"N	80°45'11.1149"W	9246.78	331.578	0.18	0.11	-0.14
22733.00	90.620	328.870	11597.28	9338.62	8210.89	-4448.79	1709802.43	14423601.72	39°42'59.4401"N	80°45'11.7226"W	9338.66	331.550	0.27	-0.14	0.23

RECEIVED
Office Of Oil and Gas
OCT 02 2024
WV Department of
Environmental Protection



Actual Wellpath Report

Elmer N-16 HU ST01 AWP Proj: 23376'

Page 10 of 12



REFERENCE WELLPATH IDENTIFICATION			
Operator	EQT (TUG HILL OPERATING, LLC)	Well	Elmer N-16 HU ST01
Field	Wetzel	API	47-103-03504-0000
Facility	Elmer Pad	Wellbore	Elmer N-16 HU ST01 AWB
Slot	Slot 16	Sidetrack from	Elmer N-16 HU AWP Proj: at 10400.00 MD

WELLPATH DATA (248 stations) † = interpolated, ‡ = extrapolated station															
MD [ft]	Inclination [°]	Azimuth [°]	TVD [ft]	Vert Sect [ft]	North [ft]	East [ft]	Grid East [US ft]	Grid North [US ft]	Latitude	Longitude	Closure Dist [ft]	Closure Dir [°]	DLS [°/100ft]	Build Rate [°/100ft]	Turn Rate [°/100ft]
22827.00	90.720	328.870	11596.18	9432.52	8291.35	-4497.39	1709753.85	14423682.15	39°43'0.2366"N	80°45'12.3416"W	9432.55	331.524	0.11	0.11	0.00
22920.00	90.810	328.780	11594.94	9525.42	8370.91	-4545.52	1709705.73	14423761.68	39°43'1.0242"N	80°45'12.9548"W	9525.44	331.497	0.14	0.10	-0.10
23013.00	90.840	328.780	11593.60	9618.31	8450.44	-4593.72	1709657.55	14423841.17	39°43'1.8114"N	80°45'13.5688"W	9618.33	331.471	0.03	0.03	0.00
23105.00	90.720	328.540	11592.35	9710.20	8529.01	-4641.57	1709609.73	14423919.71	39°43'2.5892"N	80°45'14.1783"W	9710.21	331.445	0.29	-0.13	-0.26
23199.00	90.620	329.380	11591.25	9804.11	8609.54	-4690.04	1709561.28	14424000.21	39°43'3.3864"N	80°45'14.7957"W	9804.11	331.421	0.90	-0.11	0.89
23292.00	90.650	328.860	11590.22	9897.03	8689.35	-4737.76	1709513.57	14424079.99	39°43'4.1765"N	80°45'15.4037"W	9897.03	331.399	0.56	0.03	-0.56
23351.00	90.750	329.020	11589.50	9955.97	8739.89	-4768.20	1709483.15	14424130.51	39°43'4.6767"N	80°45'15.7915"W	9955.98	331.385	0.32	0.17	0.27
23376.00†	90.750	329.020	11589.17	9980.95	8761.32	-4781.07	1709470.28	14424151.94	39°43'4.8889"N	80°45'15.9554"W	9980.95	331.379	0.00	0.00	0.00

HOLE & CASING SECTIONS - Ref Wellbore: Elmer N-16 HU ST01 AWB Ref Wellpath: Elmer N-16 HU ST01 AWP Proj: 23376'										
String/Diameter	Start MD [ft]	End MD [ft]	Interval [ft]	Start TVD [ft]	End TVD [ft]	Start N/S [ft]	Start E/W [ft]	End N/S [ft]	End E/W [ft]	
30in Conductor	33.00	153.00	120.00	33.00	153.00	0.00	0.00	0.02	-0.39	
26in Open Hole	153.00	1034.00	881.00	153.00	1033.99	0.02	-0.39	0.22	-3.09	
20in Conductor	33.00	1034.00	1001.00	33.00	1033.99	0.00	0.00	0.22	-3.09	
17.5in Open Hole	1034.00	2891.00	1857.00	1033.99	2890.89	0.22	-3.09	4.29	5.42	
13.375in Casing Intermediate	33.00	2891.00	2858.00	33.00	2890.89	0.00	0.00	4.29	5.42	
12.25in Open Hole	2891.00	8141.98	5250.98	2890.89	8120.70	4.29	5.42	-156.61	192.71	
9.625in Casing Intermediate	33.00	8141.98	8108.98	33.00	8120.70	0.00	0.00	-156.61	192.71	
12.25in Open Hole	2943.00	10883.00	7940.00	2942.89	10527.32	4.45	5.42	-1199.24	885.98	
9.625in Casing Intermediate	33.00	10883.00	10850.00	33.00	10527.32	0.00	0.00	-1199.24	885.98	
8.5in Open Hole	10883.00	23376.00	12493.00	10527.32	11589.17	-1199.24	885.98	8761.32	-4781.07	
5.5in Casing Production	33.00	23346.00	23313.00	33.00	11589.56	0.00	0.00	8735.60	-4765.63	

RECEIVED
Office Of Oil and Gas
OCT 02 2024
WV Department of
Environmental Protection



Actual Wellpath Report

Elmer N-16 HU ST01 AWP Proj: 23376'

Page 11 of 12



REFERENCE WELLPATH IDENTIFICATION			
Operator	EQT (TUG HILL OPERATING, LLC)	Well	Elmer N-16 HU ST01
Field	Wetzel	API	47-103-03504-0000
Facility	Elmer Pad	Wellbore	Elmer N-16 HU ST01 AWB
Slot	Slot 16	Sidetrack from	Elmer N-16 HU AWP Proj: at 10400.00 MD

TARGETS								
Name	TVD [ft]	North [ft]	East [ft]	Grid East [US ft]	Grid North [US ft]	Latitude	Longitude	Shape
Elmer N-16 HU RD ST01 BHL Rev-0	11585.91	8761.72	-4781.70	1709469.65	14424152.34	39°43'4.8929"N	80°45'15.9635"W	point
Elmer N-16 HU RD ST01 LP Rev-0	11774.00	-571.49	557.74	1714806.98	14414822.81	39°41'32.5046"N	80°44'7.9862"W	point

WELLPATH COMPOSITION - Ref Wellbore: Elmer N-16 HU ST01 AWB Ref Wellpath: Elmer N-16 HU ST01 AWP Proj: 23376'					
Start MD [ft]	End MD [ft]	Positional Uncertainty Model	Log Name/Comment	Wellbore	Survey Date
33.00	10400.00	Gyrodata 2015 - CT+WIR+ALC	05 Gyrodata [CT+WIR+ALC]<12-1/4"> (100'- 10400')	Elmer N-16 HU AWB	8/30/2023
10400.00	10863.98	OWSG MWD rev2 - Standard	07 NZone MWD [OWSG MWD Rev.2+Standard] (10400')(10455'-10864')	Elmer N-16 HU ST01 AWB	8/23/2023
10863.98	23376.00	OWSG MWD rev2 + IFR1 + Sag + Multi-Station Correction	08 BH ATCurve SuperiorQC [OWSG MWD Rev.2+IFR1+Sag+MSA] <8-1/2">(10864')(10914'-23351')	Elmer N-16 HU ST01 AWB	8/25/2023

RECEIVED
Office Of Oil and Gas
OCT 02 2024
WV Department of
Environmental Protection



Actual Wellpath Report

Elmer N-16 HU ST01 AWP Proj: 23376'

Page 12 of 12



REFERENCE WELLPATH IDENTIFICATION			
Operator	EQT (TUG HILL OPERATING, LLC)	Well	Elmer N-16 HU ST01
Field	Wetzel	API	47-103-03504-0000
Facility	Elmer Pad	Wellbore	Elmer N-16 HU ST01 AWP
Slot	Slot 16	Sidetrack from	Elmer N-16 HU AWP Proj: at 10400.00 MD

COMMENTS
<p>Wellpath general comments API: 47-103-03504-0000 BH Job #: 111940245 Rig: Nabors X08 Duration: 8/30/2023-9/10/2023</p> <p>05_ Gyrodata [CT+WIR+ALC]<12-1/4"> (100'- 10400') 07_NZone MWD [OWSG MWD Rev.2+Standard] (10400')(10455'-10864') 08_BH ATCurve SuperiorQC [OWSG MWD Rev.2+IFR1+Sag+MSA] <8-1/2">(10864')(10914'-23351')</p> <p>Landing Pt. @ 12587' MD Final Survey @ 23351' MD Projected MD at TD: 23376'</p>

RECEIVED
Office Of Oil and Gas
OCT 02 2024
WV Department of
Environmental Protection