



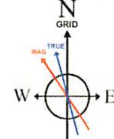
KB Elevation=1310 FT
 Ground Elevation=1277 FT
 All Survey Measurements were taken from KB Elevation

RECEIVED
 Office Of Oil and Gas

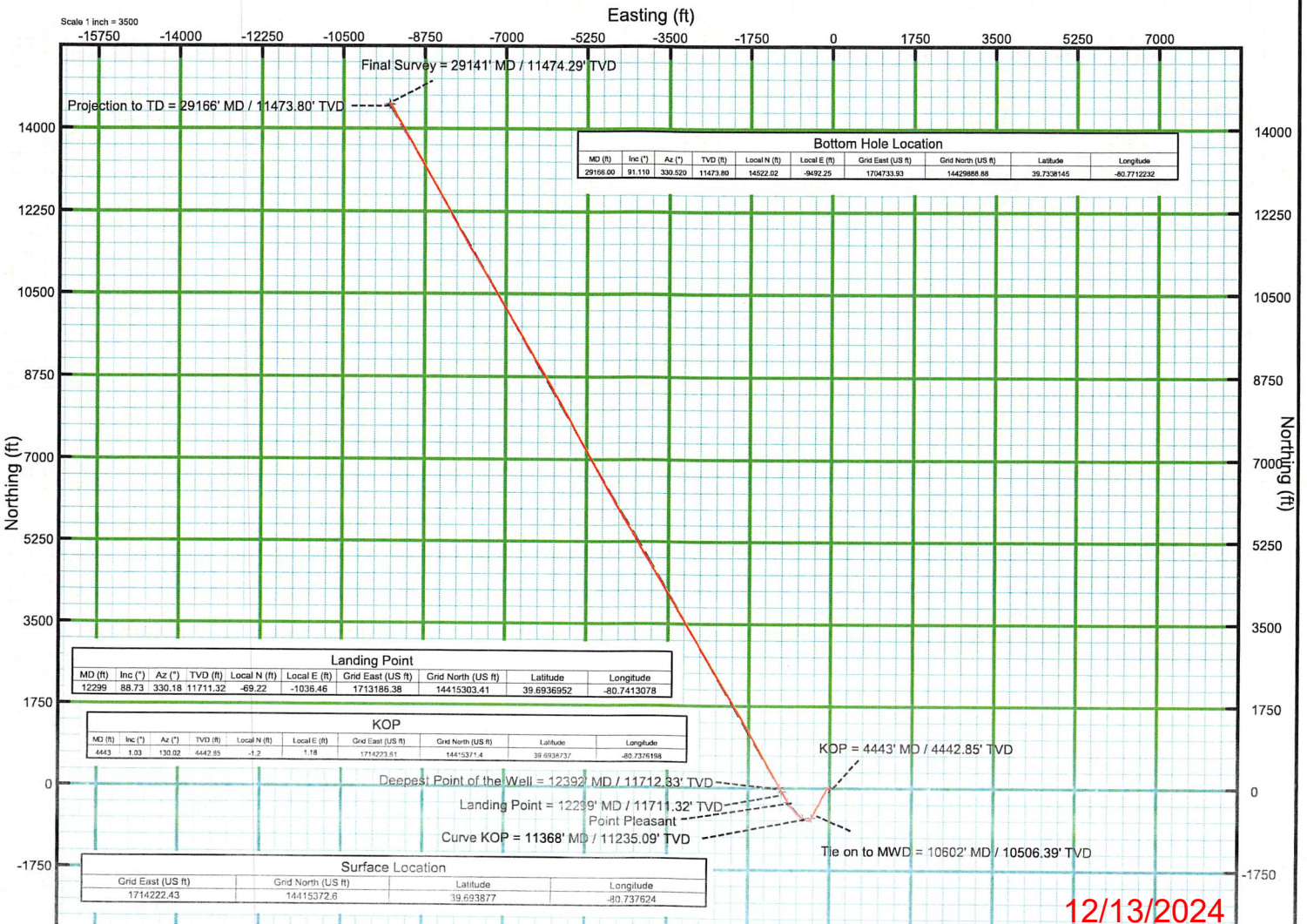
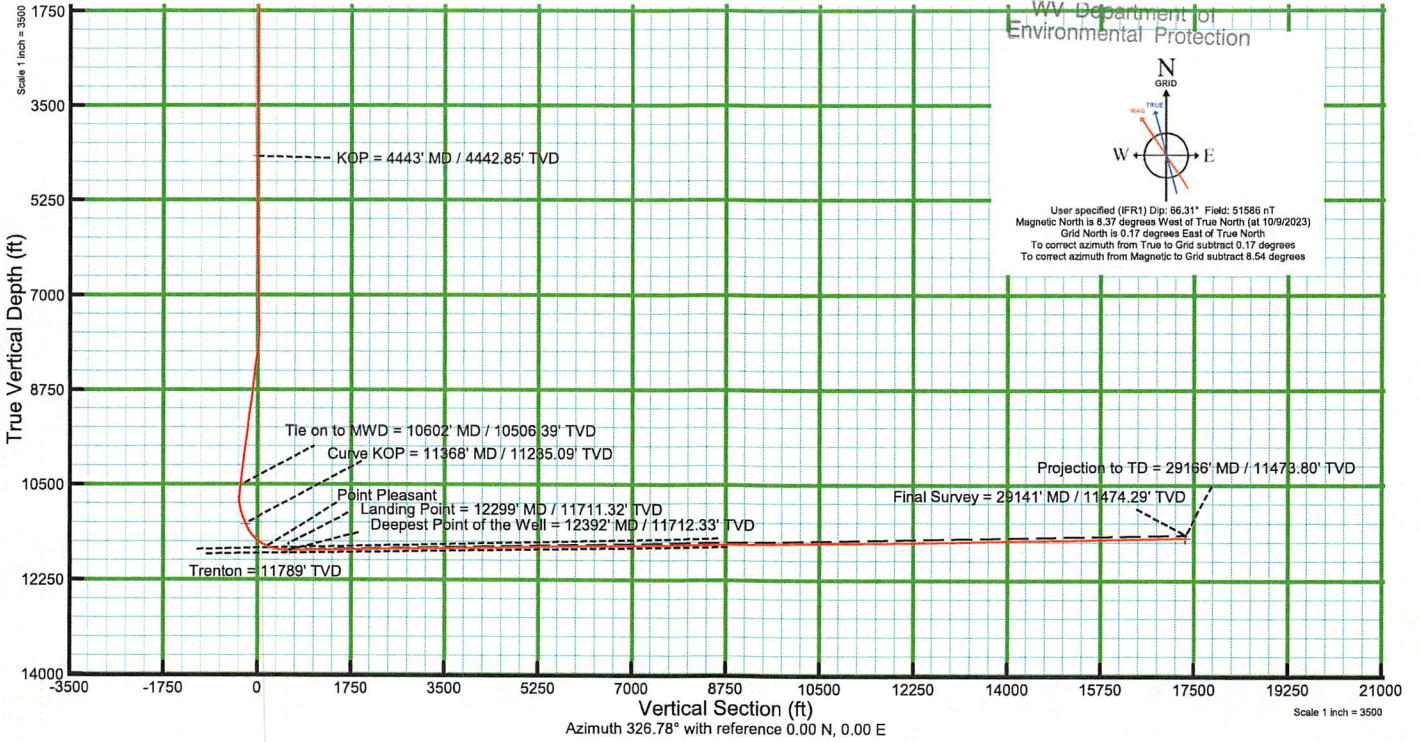
OCT 02 2024



WV Department of
 Environmental Protection



User specified (FR1) Dip: 86.31° Field: 51586 nT
 Magnetic North is 8.37 degrees West of True North (at 10/9/2023)
 Grid North is 0.17 degrees East of True North
 To correct azimuth from True to Grid subtract 0.17 degrees
 To correct azimuth from Magnetic to Grid subtract 8.54 degrees



12/13/2024



Actual Wellpath Report

Elmer N-15 HU AWP Proj: 29166'

Page 1 of 16



REFERENCE WELLPATH IDENTIFICATION

Operator	EQT (TUG HILL OPERATING, LLC)	Well	Elmer N-15 HU
Field	Wetzel	API	47-103-03536-0000
Facility	Elmer Pad	Wellbore	Elmer N-15 HU AWB
Slot	Slot 15		

REPORT SETUP INFORMATION

Projection System	NAD83 / UTM Zone 17 North, US feet	Software System	WellArchitect® 6.0
North Reference	Grid	User	Scurdan
Scale	0.999606	Report Generated	11/15/2023 at 10:50:39 AM
Convergence at slot	0.17° East	Database	WA_MPL_EASTERNUS_Defn

WELLPATH LOCATION

	Local coordinates		Grid coordinates		Geographic coordinates	
	North[ft]	East[ft]	Easting[US ft]	Northing[US ft]	Latitude	Longitude
Slot Location	58.79	14.70	1714222.43	14415372.60	39°41'37.9572"N	80°44'15.4464"W
Facility Reference Pt			1714207.74	14415313.83	39°41'37.3765"N	80°44'15.6366"W
Field Reference Pt			1628437.04	12695896.25	34°58'12.0000"N	81°02'24.0000"W

WELLPATH DATUM

Calculation method	Minimum curvature	Nabors X08 (RKB) to Facility Vertical Datum	1310.00ft
Horizontal Reference Pt	Slot	Nabors X08 (RKB) to Mean Sea Level	1310.00ft
Vertical Reference Pt	Nabors X08 (RKB)	Nabors X08 (RKB) to Ground Level at Slot (Slot 15)	33.00ft
MD Reference Pt	Nabors X08 (RKB)	Section Origin	N 0.00, E 0.00 ft
Field Vertical Reference	Mean Sea Level	Section Azimuth	326.78°

RECEIVED
 Office Of Oil and Gas
 OCT 02 2024
 WV Department of
 Environmental Protection



OCT 02 2024

Actual Wellpath Report

Elmer N-15 HU AWP Proj: 29166'



REFERENCE WELLPATH IDENTIFICATION

Operator	EQT (TUG HILL OPERATING, LLC)	Well	Elmer N-15 HU
Field	Wetzel	API	47-103-03536-0000
Facility	Elmer Pad	Wellbore	Elmer N-15 HU AWB
Slot	Slot 15		

WELLPATH DATA (373 stations) † = interpolated, ‡ = extrapolated station

MD [ft]	Inclination [°]	Azimuth [°]	TVD [ft]	Vert Sect [ft]	North [ft]	East [ft]	Grid East [US ft]	Grid North [US ft]	Latitude	Longitude	Closure Dist [ft]	Closure Dir [°]	DLS [°/100ft]	Build Rate [°/100ft]	Turn Rate [°/100ft]
0.00†	0.000	288.390	0.00	0.00	0.00	0.00	1714222.43	14415372.60	39°41'37.9572"N	80°44'15.4464"W	0.00	0.000	0.00	0.00	0.00
33.00	0.000	288.390	33.00	0.00	0.00	0.00	1714222.43	14415372.60	39°41'37.9572"N	80°44'15.4464"W	0.00	0.000	0.00	0.00	0.00
184.00	0.300	288.390	184.00	0.31	0.12	-0.38	1714222.06	14415372.72	39°41'37.9584"N	80°44'15.4512"W	0.40	288.390	0.20	0.20	0.00
228.00	0.310	285.960	228.00	0.49	0.19	-0.60	1714221.83	14415372.79	39°41'37.9591"N	80°44'15.4540"W	0.63	287.931	0.04	0.02	-5.52
272.00	0.260	326.370	272.00	0.68	0.31	-0.77	1714221.66	14415372.91	39°41'37.9602"N	80°44'15.4562"W	0.83	291.942	0.46	-0.11	91.84
316.00	0.380	316.020	316.00	0.92	0.50	-0.93	1714221.51	14415373.10	39°41'37.9621"N	80°44'15.4582"W	1.05	298.280	0.30	0.27	-23.52
360.00	0.170	313.740	360.00	1.13	0.65	-1.07	1714221.36	14415373.25	39°41'37.9636"N	80°44'15.4601"W	1.25	301.107	0.48	-0.48	-5.18
404.00	0.340	346.520	404.00	1.32	0.82	-1.15	1714221.28	14415373.42	39°41'37.9653"N	80°44'15.4611"W	1.41	305.459	0.49	0.39	74.50
447.00	0.310	336.430	447.00	1.55	1.05	-1.23	1714221.20	14415373.65	39°41'37.9676"N	80°44'15.4620"W	1.62	310.560	0.15	-0.07	-23.47
491.00	0.260	13.310	491.00	1.74	1.26	-1.25	1714221.18	14415373.86	39°41'37.9696"N	80°44'15.4623"W	1.77	315.108	0.42	-0.11	83.82
534.00	0.190	341.180	534.00	1.87	1.42	-1.25	1714221.18	14415374.02	39°41'37.9712"N	80°44'15.4623"W	1.89	318.568	0.33	-0.16	-74.72
578.00	0.300	3.220	577.99	2.04	1.60	-1.27	1714221.16	14415374.20	39°41'37.9730"N	80°44'15.4626"W	2.05	321.623	0.32	0.25	50.09
622.00	0.210	354.870	621.99	2.20	1.80	-1.27	1714221.16	14415374.40	39°41'37.9750"N	80°44'15.4626"W	2.20	324.765	0.22	-0.20	-18.98
666.00	0.240	2.120	665.99	2.35	1.97	-1.27	1714221.16	14415374.57	39°41'37.9767"N	80°44'15.4626"W	2.35	327.118	0.09	0.07	16.48
710.00	0.270	357.810	709.99	2.51	2.17	-1.27	1714221.16	14415374.77	39°41'37.9786"N	80°44'15.4626"W	2.51	329.529	0.08	0.07	-9.80
755.00	0.260	351.470	754.99	2.69	2.37	-1.29	1714221.14	14415374.97	39°41'37.9807"N	80°44'15.4628"W	2.70	331.403	0.07	-0.02	-14.09
799.00	0.460	346.030	798.99	2.95	2.64	-1.35	1714221.08	14415375.24	39°41'37.9833"N	80°44'15.4636"W	2.97	332.924	0.46	0.45	-12.36
843.00	0.500	324.480	842.99	3.31	2.97	-1.51	1714220.92	14415375.57	39°41'37.9866"N	80°44'15.4655"W	3.33	333.128	0.42	0.09	-48.98
887.00	0.470	356.360	886.99	3.66	3.31	-1.63	1714220.80	14415375.91	39°41'37.9899"N	80°44'15.4671"W	3.69	333.786	0.61	-0.07	72.45
931.00	0.620	346.780	930.99	4.04	3.72	-1.69	1714220.74	14415376.32	39°41'37.9940"N	80°44'15.4679"W	4.09	335.508	0.40	0.34	-21.77
976.00	0.560	353.500	975.98	4.47	4.18	-1.78	1714220.66	14415376.77	39°41'37.9985"N	80°44'15.4689"W	4.54	336.967	0.20	-0.13	14.93
1020.00	0.680	357.070	1019.98	4.88	4.65	-1.81	1714220.62	14415377.25	39°41'38.0032"N	80°44'15.4694"W	4.99	338.700	0.29	0.27	8.11
1064.00	0.670	352.800	1063.98	5.34	5.17	-1.86	1714220.57	14415377.76	39°41'38.0083"N	80°44'15.4700"W	5.49	340.213	0.12	-0.02	-9.70
1108.00	0.840	357.240	1107.98	5.85	5.74	-1.91	1714220.52	14415378.34	39°41'38.0140"N	80°44'15.4705"W	6.05	341.638	0.41	0.39	10.09
1150.00	0.890	359.030	1149.97	6.39	6.38	-1.93	1714220.50	14415378.97	39°41'38.0202"N	80°44'15.4708"W	6.66	343.189	0.14	0.12	4.26
1192.00	0.570	23.820	1191.97	6.78	6.89	-1.85	1714220.58	14415379.49	39°41'38.0254"N	80°44'15.4698"W	7.14	344.996	1.05	-0.76	59.02
1235.00	0.480	19.260	1234.97	7.01	7.26	-1.70	1714220.73	14415379.86	39°41'38.0290"N	80°44'15.4679"W	7.46	346.806	0.23	-0.21	-10.60
1279.00	0.240	47.690	1278.96	7.13	7.50	-1.57	1714220.86	14415380.09	39°41'38.0313"N	80°44'15.4662"W	7.66	348.148	0.66	-0.55	64.61
1323.00	0.110	173.380	1322.96	7.11	7.52	-1.50	1714220.93	14415380.11	39°41'38.0315"N	80°44'15.4653"W	7.66	348.713	0.72	-0.30	285.66
1367.00	0.030	163.750	1366.96	7.06	7.46	-1.49	1714220.94	14415380.06	39°41'38.0310"N	80°44'15.4652"W	7.61	348.695	0.18	-0.18	-21.89



RECEIVED
Office Of Oil and Gas

OCT 02 2024

Actual Wellpath Report

Elmer N-15 HU AWP Proj: 29166'

Page 3 of 16



WV Department of
Environmental Protection

REFERENCE WELLPATH IDENTIFICATION

Operator	EQT (TUG HILL OPERATING, LLC)	Well	Elmer N-15 HU
Field	Wetzel	API	47-103-03536-0000
Facility	Elmer Pad	Wellbore	Elmer N-15 HU AWB
Slot	Slot 15		

WELLPATH DATA (373 stations)

MD [ft]	Inclination [°]	Azimuth [°]	TVD [ft]	Vert Sect [ft]	North [ft]	East [ft]	Grid East [US ft]	Grid North [US ft]	Latitude	Longitude	Closure Dist [ft]	Closure Dir [°]	DLS [°/100ft]	Build Rate [°/100ft]	Turn Rate [°/100ft]
1411.00	0.000	133.940	1410.96	7.05	7.45	-1.49	1714220.94	14415380.05	39°41'38.0309"N	80°44'15.4651"W	7.60	348.703	0.07	-0.07	0.00
1456.00	0.030	344.090	1455.96	7.06	7.46	-1.49	1714220.94	14415380.06	39°41'38.0310"N	80°44'15.4652"W	7.61	348.695	0.07	0.07	0.00
1500.00	0.070	318.950	1499.96	7.10	7.49	-1.51	1714220.92	14415380.09	39°41'38.0313"N	80°44'15.4654"W	7.65	348.589	0.10	0.09	-57.14
1543.00	0.090	318.060	1542.96	7.16	7.54	-1.55	1714220.88	14415380.14	39°41'38.0317"N	80°44'15.4660"W	7.70	348.364	0.05	0.05	-2.07
1586.00	0.110	318.790	1585.96	7.23	7.60	-1.60	1714220.83	14415380.19	39°41'38.0323"N	80°44'15.4666"W	7.76	348.088	0.05	0.05	1.70
1629.00	0.160	231.160	1628.96	7.27	7.59	-1.68	1714220.75	14415380.19	39°41'38.0322"N	80°44'15.4675"W	7.77	347.545	0.44	0.12	-203.79
1673.00	0.090	280.930	1672.96	7.28	7.56	-1.76	1714220.67	14415380.15	39°41'38.0319"N	80°44'15.4686"W	7.76	346.904	0.28	-0.16	113.11
1717.00	0.110	215.490	1716.96	7.29	7.53	-1.82	1714220.61	14415380.13	39°41'38.0316"N	80°44'15.4693"W	7.75	346.436	0.25	0.05	-148.73
1761.00	0.130	180.930	1760.96	7.24	7.44	-1.84	1714220.59	14415380.04	39°41'38.0308"N	80°44'15.4697"W	7.67	346.104	0.17	0.05	-78.55
1805.00	0.090	166.090	1804.96	7.16	7.36	-1.83	1714220.60	14415379.96	39°41'38.0300"N	80°44'15.4696"W	7.59	346.008	0.11	-0.09	-33.73
1849.00	0.090	152.310	1848.96	7.10	7.30	-1.81	1714220.62	14415379.89	39°41'38.0293"N	80°44'15.4693"W	7.52	346.070	0.05	0.00	-31.32
1893.00	0.130	128.570	1892.96	7.01	7.24	-1.75	1714220.68	14415379.83	39°41'38.0287"N	80°44'15.4686"W	7.45	346.367	0.14	0.09	-53.95
1937.00	0.150	129.560	1936.96	6.91	7.17	-1.67	1714220.76	14415379.76	39°41'38.0281"N	80°44'15.4675"W	7.36	346.874	0.05	0.05	2.25
1981.00	0.070	134.540	1980.96	6.83	7.11	-1.61	1714220.82	14415379.71	39°41'38.0275"N	80°44'15.4667"W	7.29	347.261	0.18	-0.18	11.32
2025.00	0.190	122.170	2024.96	6.74	7.05	-1.53	1714220.90	14415379.65	39°41'38.0269"N	80°44'15.4656"W	7.22	347.787	0.28	0.27	-28.11
2070.00	0.320	115.670	2069.96	6.56	6.96	-1.35	1714221.08	14415379.56	39°41'38.0260"N	80°44'15.4634"W	7.09	349.019	0.30	0.29	-14.44
2114.00	0.380	95.080	2113.96	6.37	6.89	-1.09	1714221.34	14415379.49	39°41'38.0253"N	80°44'15.4601"W	6.98	350.980	0.31	0.14	-46.80
2159.00	0.460	101.470	2158.96	6.15	6.84	-0.77	1714221.66	14415379.44	39°41'38.0248"N	80°44'15.4560"W	6.89	353.592	0.21	0.18	14.20
2203.00	0.500	113.170	2202.96	5.86	6.73	-0.42	1714222.01	14415379.33	39°41'38.0237"N	80°44'15.4515"W	6.75	356.438	0.24	0.09	26.59
2247.00	0.550	115.550	2246.96	5.52	6.57	-0.05	1714222.38	14415379.17	39°41'38.0221"N	80°44'15.4468"W	6.57	359.545	0.12	0.11	5.41
2291.00	0.400	114.160	2290.96	5.21	6.41	0.28	1714222.71	14415379.01	39°41'38.0205"N	80°44'15.4426"W	6.42	2.487	0.34	-0.34	-3.16
2335.00	0.420	146.470	2334.95	4.92	6.22	0.51	1714222.94	14415378.81	39°41'38.0186"N	80°44'15.4396"W	6.24	4.669	0.52	0.05	73.43
2379.00	0.450	155.920	2378.95	4.59	5.92	0.67	1714223.10	14415378.52	39°41'38.0157"N	80°44'15.4376"W	5.96	6.427	0.18	0.07	21.48
2423.00	0.460	149.860	2422.95	4.24	5.61	0.83	1714223.26	14415378.21	39°41'38.0126"N	80°44'15.4356"W	5.67	8.376	0.11	0.02	-13.77
2467.00	0.460	163.970	2466.95	3.90	5.29	0.96	1714223.39	14415377.89	39°41'38.0094"N	80°44'15.4338"W	5.38	10.325	0.26	0.00	32.07
2511.00	0.380	170.900	2510.95	3.60	4.98	1.04	1714223.47	14415377.58	39°41'38.0063"N	80°44'15.4329"W	5.08	11.756	0.22	-0.18	15.75
2556.00	0.340	182.230	2555.95	3.35	4.70	1.05	1714223.48	14415377.29	39°41'38.0036"N	80°44'15.4327"W	4.81	12.651	0.18	-0.09	25.18
2599.00	0.190	284.410	2598.95	3.30	4.59	0.98	1714223.41	14415377.19	39°41'38.0025"N	80°44'15.4337"W	4.69	12.063	0.98	-0.35	237.63
2643.00	0.250	235.220	2642.95	3.35	4.55	0.83	1714223.26	14415377.15	39°41'38.0021"N	80°44'15.4356"W	4.63	10.346	0.43	0.14	-111.80
2688.00	0.170	252.860	2687.95	3.37	4.47	0.69	1714223.12	14415377.07	39°41'38.0014"N	80°44'15.4374"W	4.53	8.720	0.23	-0.18	39.20



RECEIVED
Office Of Oil and Gas

OCT 02 2024

WV Department of
Environmental Protection

Actual Wellpath Report

Elmer N-15 HU AWP Proj: 29166'

Page 4 of 16



REFERENCE WELLPATH IDENTIFICATION

Operator	EQT (TUG HILL OPERATING, LLC)	Well	Elmer N-15 HU
Field	Wetzel	API	47-103-03536-0000
Facility	Elmer Pad	Wellbore	Elmer N-15 HU AWB
Slot	Slot 15		

WELLPATH DATA (373 stations)

MD [ft]	Inclination [°]	Azimuth [°]	TVD [ft]	Vert Sect [ft]	North [ft]	East [ft]	Grid East [US ft]	Grid North [US ft]	Latitude	Longitude	Closure Dist [ft]	Closure Dir [°]	DLS [°/100ft]	Build Rate [°/100ft]	Turn Rate [°/100ft]
2732.00	0.210	290.750	2731.95	3.45	4.48	0.55	1714222.98	14415377.08	39°41'38.0015"N	80°44'15.4392"W	4.52	6.974	0.29	0.09	86.11
2776.00	0.320	282.740	2775.95	3.60	4.54	0.35	1714222.78	14415377.14	39°41'38.0020"N	80°44'15.4417"W	4.55	4.449	0.26	0.25	-18.20
2820.00	0.360	287.220	2819.95	3.80	4.61	0.10	1714222.53	14415377.21	39°41'38.0027"N	80°44'15.4449"W	4.61	1.260	0.11	0.09	10.18
2864.00	0.470	280.970	2863.95	4.03	4.68	-0.21	1714222.22	14415377.28	39°41'38.0035"N	80°44'15.4489"W	4.69	357.459	0.27	0.25	-14.20
2908.00	0.300	239.530	2907.94	4.16	4.66	-0.48	1714221.95	14415377.26	39°41'38.0032"N	80°44'15.4524"W	4.68	354.065	0.72	-0.39	-94.18
2952.00	0.660	173.080	2951.94	3.94	4.35	-0.55	1714221.88	14415376.95	39°41'38.0002"N	80°44'15.4533"W	4.38	352.753	1.38	0.82	-151.02
2977.00	0.750	157.660	2976.94	3.65	4.05	-0.47	1714221.96	14415376.65	39°41'37.9973"N	80°44'15.4523"W	4.08	353.339	0.84	0.36	-61.68
2996.00	1.090	159.670	2995.94	3.35	3.77	-0.36	1714222.07	14415376.37	39°41'37.9944"N	80°44'15.4509"W	3.79	354.494	1.80	1.79	10.58
3040.00	1.410	149.970	3039.93	2.40	2.91	0.05	1714222.48	14415375.51	39°41'37.9859"N	80°44'15.4456"W	2.91	1.041	0.87	0.73	-22.05
3080.00	1.360	143.010	3079.92	1.44	2.10	0.58	1714223.01	14415374.70	39°41'37.9779"N	80°44'15.4388"W	2.18	15.534	0.44	-0.13	-17.40
3124.00	0.970	125.460	3123.91	0.57	1.47	1.20	1714223.63	14415374.07	39°41'37.9717"N	80°44'15.4309"W	1.90	39.268	1.19	-0.89	-39.89
3168.00	0.660	117.630	3167.90	0.00	1.14	1.73	1714224.16	14415373.74	39°41'37.9684"N	80°44'15.4242"W	2.07	56.689	0.75	-0.70	-17.80
3212.00	0.680	114.780	3211.90	-0.44	0.91	2.19	1714224.62	14415373.51	39°41'37.9661"N	80°44'15.4183"W	2.37	67.451	0.09	0.05	-6.48
3257.00	0.700	102.710	3256.90	-0.86	0.74	2.70	1714225.13	14415373.34	39°41'37.9644"N	80°44'15.4118"W	2.80	74.732	0.33	0.04	-26.82
3297.00	0.310	95.340	3296.89	-1.11	0.67	3.05	1714225.48	14415373.27	39°41'37.9637"N	80°44'15.4074"W	3.12	77.536	0.99	-0.97	-18.42
3341.00	0.090	96.960	3340.89	-1.20	0.66	3.20	1714225.63	14415373.26	39°41'37.9636"N	80°44'15.4054"W	3.27	78.376	0.50	-0.50	3.68
3385.00	0.140	55.500	3384.89	-1.22	0.68	3.28	1714225.71	14415373.28	39°41'37.9638"N	80°44'15.4044"W	3.35	78.207	0.21	0.11	-94.23
3429.00	0.270	94.430	3428.89	-1.29	0.71	3.43	1714225.86	14415373.31	39°41'37.9641"N	80°44'15.4025"W	3.50	78.341	0.42	0.30	88.48
3473.00	0.080	111.460	3472.89	-1.37	0.69	3.56	1714225.99	14415373.29	39°41'37.9639"N	80°44'15.4008"W	3.63	79.060	0.44	-0.43	38.70
3517.00	0.160	291.440	3516.89	-1.35	0.70	3.53	1714225.96	14415373.30	39°41'37.9640"N	80°44'15.4012"W	3.60	78.799	0.55	0.18	409.05
3561.00	0.340	315.790	3560.89	-1.17	0.82	3.38	1714225.81	14415373.41	39°41'37.9651"N	80°44'15.4031"W	3.48	76.450	0.47	0.41	55.34
3605.00	0.600	300.390	3604.89	-0.84	1.03	3.09	1714225.52	14415373.62	39°41'37.9672"N	80°44'15.4068"W	3.26	71.658	0.65	0.59	-35.00
3650.00	0.530	295.030	3649.89	-0.45	1.23	2.70	1714225.13	14415373.83	39°41'37.9693"N	80°44'15.4118"W	2.97	65.471	0.19	-0.16	-11.91
3694.00	0.540	298.080	3693.89	-0.09	1.42	2.33	1714224.76	14415374.02	39°41'37.9711"N	80°44'15.4165"W	2.73	58.747	0.07	0.02	6.93
3738.00	0.590	299.900	3737.89	0.29	1.63	1.95	1714224.38	14415374.23	39°41'37.9732"N	80°44'15.4213"W	2.54	50.226	0.12	0.11	4.14
3782.00	0.750	309.410	3781.88	0.77	1.92	1.54	1714223.96	14415374.52	39°41'37.9761"N	80°44'15.4267"W	2.46	38.614	0.44	0.36	21.61
3826.00	0.690	295.970	3825.88	1.27	2.22	1.07	1714223.50	14415374.82	39°41'37.9791"N	80°44'15.4325"W	2.47	25.821	0.41	-0.14	-30.55
3870.00	0.520	275.110	3869.88	1.62	2.36	0.64	1714223.07	14415374.95	39°41'37.9804"N	80°44'15.4381"W	2.44	15.153	0.63	-0.39	-47.41
3914.00	0.530	253.530	3913.88	1.80	2.32	0.24	1714222.67	14415374.91	39°41'37.9800"N	80°44'15.4432"W	2.33	6.011	0.45	0.02	-49.05
3958.00	0.510	243.180	3957.87	1.88	2.17	-0.13	1714222.30	14415374.77	39°41'37.9786"N	80°44'15.4479"W	2.17	356.673	0.22	-0.05	-23.52



RECEIVED
Office Of Oil and Gas

OCT 02 2024

WV Department of
Environmental Protection

Actual Wellpath Report

Elmer N-15 HU AWP Proj: 29166'

Page 5 of 16

RECEIVED
Office Of Oil and Gas

OCT 02 2024

WV Department of
Environmental Protection



REFERENCE WELLPATH IDENTIFICATION

Operator	EQT (TUG HILL OPERATING, LLC)	Well	Elmer N-15 HU
Field	Wetzel	API	47-103-03536-0000
Facility	Elmer Pad	Wellbore	Elmer N-15 HU AWB
Slot	Slot 15		

WELLPATH DATA (373 stations)

MD [ft]	Inclination [°]	Azimuth [°]	TVD [ft]	Vert Sect [ft]	North [ft]	East [ft]	Grid East [US ft]	Grid North [US ft]	Latitude	Longitude	Closure Dist [ft]	Closure Dir [°]	DLS [°/100ft]	Build Rate [°/100ft]	Turn Rate [°/100ft]
4002.00	0.480	228.960	4001.87	1.88	1.96	-0.44	1714221.99	14415374.56	39°41'37.9765"N	80°44'15.4519"W	2.01	347.350	0.29	-0.07	-32.32
4046.00	0.460	228.590	4045.87	1.83	1.72	-0.71	1714221.72	14415374.32	39°41'37.9742"N	80°44'15.4554"W	1.86	337.555	0.05	-0.05	-0.84
4090.00	0.420	204.850	4089.87	1.72	1.46	-0.91	1714221.52	14415374.06	39°41'37.9716"N	80°44'15.4580"W	1.72	328.000	0.42	-0.09	-53.95
4134.00	0.230	195.110	4133.87	1.58	1.23	-1.00	1714221.43	14415373.83	39°41'37.9693"N	80°44'15.4592"W	1.58	320.760	0.45	-0.43	-22.14
4178.00	0.360	144.330	4177.87	1.38	1.03	-0.94	1714221.49	14415373.63	39°41'37.9674"N	80°44'15.4584"W	1.40	317.463	0.63	0.30	-115.41
4222.00	0.560	137.290	4221.87	1.03	0.76	-0.72	1714221.71	14415373.36	39°41'37.9647"N	80°44'15.4555"W	1.05	316.593	0.47	0.45	-16.00
4266.00	0.720	141.770	4265.86	0.54	0.38	-0.40	1714222.03	14415372.98	39°41'37.9610"N	80°44'15.4515"W	0.56	313.750	0.38	0.36	10.18
4310.00	0.590	131.380	4309.86	0.05	0.02	-0.06	1714222.37	14415372.62	39°41'37.9573"N	80°44'15.4471"W	0.06	286.056	0.40	-0.30	-23.61
4354.00	0.560	145.060	4353.86	-0.39	-0.31	0.23	1714222.66	14415372.29	39°41'37.9541"N	80°44'15.4434"W	0.39	142.981	0.32	-0.07	31.09
4399.00	0.890	131.730	4398.85	-0.94	-0.72	0.62	1714223.05	14415371.88	39°41'37.9500"N	80°44'15.4385"W	0.95	139.351	0.82	0.73	-29.62
4443.00	1.030	130.020	4442.85	-1.65	-1.20	1.18	1714223.61	14415371.40	39°41'37.9452"N	80°44'15.4314"W	1.68	135.624	0.32	0.32	-3.89
4487.00	1.220	118.850	4486.84	-2.44	-1.68	1.89	1714224.32	14415370.92	39°41'37.9405"N	80°44'15.4223"W	2.53	131.687	0.66	0.43	-25.39
4531.00	1.210	110.080	4530.83	-3.23	-2.07	2.74	1714225.17	14415370.53	39°41'37.9366"N	80°44'15.4114"W	3.43	127.088	0.42	-0.02	-19.93
4575.00	0.930	102.770	4574.82	-3.86	-2.31	3.52	1714225.95	14415370.29	39°41'37.9343"N	80°44'15.4014"W	4.21	123.235	0.71	-0.64	-16.61
4619.00	0.910	108.460	4618.82	-4.39	-2.50	4.20	1714226.63	14415370.10	39°41'37.9324"N	80°44'15.3927"W	4.89	120.726	0.21	-0.05	12.93
4663.00	0.930	95.880	4662.81	-4.89	-2.64	4.89	1714227.32	14415369.96	39°41'37.9309"N	80°44'15.3839"W	5.56	118.413	0.46	0.05	-28.59
4707.00	1.150	58.480	4706.80	-5.13	-2.45	5.62	1714228.05	14415370.15	39°41'37.9328"N	80°44'15.3746"W	6.13	113.557	1.59	0.50	-85.00
4751.00	1.270	54.810	4750.79	-5.12	-1.94	6.39	1714228.82	14415370.66	39°41'37.9378"N	80°44'15.3646"W	6.68	106.863	0.32	0.27	-8.34
4795.00	0.920	85.400	4794.79	-5.28	-1.63	7.15	1714229.57	14415370.97	39°41'37.9409"N	80°44'15.3550"W	7.33	102.843	1.52	-0.80	69.52
4839.00	1.010	115.890	4838.78	-5.78	-1.77	7.85	1714230.27	14415370.83	39°41'37.9394"N	80°44'15.3461"W	8.04	102.712	1.17	0.20	69.30
4883.00	0.580	139.830	4882.78	-6.33	-2.11	8.34	1714230.77	14415370.49	39°41'37.9361"N	80°44'15.3398"W	8.60	104.196	1.21	-0.98	54.41
4927.00	0.480	158.420	4926.77	-6.73	-2.45	8.55	1714230.98	14415370.15	39°41'37.9327"N	80°44'15.3371"W	8.89	105.996	0.45	-0.23	42.25
4971.00	0.400	203.990	4970.77	-7.00	-2.76	8.56	1714230.98	14415369.84	39°41'37.9296"N	80°44'15.3370"W	8.99	107.896	0.79	-0.18	103.57
5015.00	0.540	250.110	5014.77	-7.03	-2.97	8.30	1714230.72	14415369.63	39°41'37.9275"N	80°44'15.3403"W	8.81	109.715	0.89	0.32	104.82
5065.00	1.010	263.030	5064.77	-6.78	-3.11	7.64	1714230.07	14415369.49	39°41'37.9262"N	80°44'15.3488"W	8.25	112.134	1.00	0.94	25.84
5115.00	1.210	259.520	5114.76	-6.39	-3.26	6.68	1714229.11	14415369.34	39°41'37.9248"N	80°44'15.3610"W	7.43	115.982	0.42	0.40	-7.02
5209.00	1.520	256.660	5208.73	-5.58	-3.72	4.49	1714226.92	14415368.88	39°41'37.9202"N	80°44'15.3890"W	5.84	129.657	0.34	0.33	-3.04
5303.00	1.670	236.740	5302.70	-5.15	-4.76	2.13	1714224.56	14415367.84	39°41'37.9100"N	80°44'15.4192"W	5.22	155.859	0.61	0.16	-21.19
5397.00	1.130	215.160	5396.67	-5.50	-6.27	0.46	1714222.89	14415366.33	39°41'37.8952"N	80°44'15.4408"W	6.29	175.843	0.79	-0.57	-22.96
5491.00	0.660	234.680	5490.66	-5.86	-7.34	-0.52	1714221.91	14415365.26	39°41'37.8846"N	80°44'15.4533"W	7.36	184.048	0.59	-0.50	20.77

OCT 02 2024

WV Department of
Environmental Protection



Actual Wellpath Report

Elmer N-15 HU AWP Proj: 29166'

Page 6 of 16



REFERENCE WELLPATH IDENTIFICATION

Operator	EQT (TUG HILL OPERATING, LLC)	Well	Elmer N-15 HU
Field	Wetzel	API	47-103-03536-0000
Facility	Elmer Pad	Wellbore	Elmer N-15 HU AWB
Slot	Slot 15		

WELLPATH DATA (373 stations)

MD [ft]	Inclination [°]	Azimuth [°]	TVD [ft]	Vert Sect [ft]	North [ft]	East [ft]	Grid East [US ft]	Grid North [US ft]	Latitude	Longitude	Closure Dist [ft]	Closure Dir [°]	DLS [°/100ft]	Build Rate [°/100ft]	Turn Rate [°/100ft]
5585.00	0.500	229.830	5584.65	-5.93	-7.92	-1.27	1714221.16	14415364.68	39°41'37.8789"N	80°44'15.4630"W	8.02	189.143	0.18	-0.17	-5.16
5679.00	0.840	169.650	5678.65	-6.61	-8.86	-1.46	1714220.97	14415363.74	39°41'37.8696"N	80°44'15.4654"W	8.98	189.382	0.78	0.36	-64.02
5773.00	0.540	148.420	5772.64	-7.69	-9.92	-1.11	1714221.32	14415362.69	39°41'37.8592"N	80°44'15.4609"W	9.98	186.378	0.41	-0.32	-22.59
5866.00	0.300	76.590	5865.64	-8.21	-10.24	-0.64	1714221.79	14415362.37	39°41'37.8560"N	80°44'15.4550"W	10.26	183.591	0.57	-0.26	-77.24
5960.00	0.930	355.120	5959.63	-7.62	-9.42	-0.47	1714221.96	14415363.19	39°41'37.8641"N	80°44'15.4527"W	9.43	182.844	0.99	0.67	-86.67
6054.00	1.760	351.410	6053.61	-5.64	-7.23	-0.75	1714221.68	14415365.37	39°41'37.8857"N	80°44'15.4562"W	7.27	185.908	0.89	0.88	-3.95
6148.00	2.200	322.170	6147.55	-2.53	-4.38	-2.07	1714220.36	14415368.22	39°41'37.9140"N	80°44'15.4730"W	4.84	205.309	1.16	0.47	-31.11
6241.00	3.020	308.440	6240.46	1.58	-1.45	-5.08	1714217.35	14415371.16	39°41'37.9430"N	80°44'15.5115"W	5.29	254.129	1.10	0.88	-14.76
6335.00	2.270	307.250	6334.35	5.68	1.22	-8.51	1714213.93	14415373.82	39°41'37.9695"N	80°44'15.5551"W	8.59	278.168	0.80	-0.80	-1.27
6429.00	1.820	299.360	6428.29	8.76	3.08	-11.29	1714211.15	14415375.68	39°41'37.9879"N	80°44'15.5907"W	11.70	285.259	0.56	-0.48	-8.39
6523.00	1.970	302.890	6522.24	11.56	4.69	-13.95	1714208.49	14415377.29	39°41'38.0039"N	80°44'15.6246"W	14.71	288.583	0.20	0.16	3.76
6618.00	2.240	264.320	6617.18	13.91	5.39	-17.16	1714205.27	14415377.99	39°41'38.0109"N	80°44'15.6658"W	17.99	287.438	1.49	0.28	-40.60
6711.00	2.980	248.970	6710.09	15.27	4.34	-21.23	1714201.21	14415376.94	39°41'38.0007"N	80°44'15.7178"W	21.67	281.565	1.09	0.80	-16.51
6773.00	2.840	245.450	6772.01	15.84	3.13	-24.13	1714198.31	14415375.73	39°41'37.9888"N	80°44'15.7550"W	24.33	277.385	0.37	-0.23	-5.68
6867.00	1.730	231.150	6865.93	16.05	1.27	-27.35	1714195.09	14415373.87	39°41'37.9705"N	80°44'15.7963"W	27.38	272.658	1.32	-1.18	-15.21
6960.00	1.670	247.380	6958.89	16.16	-0.13	-29.70	1714192.74	14415372.47	39°41'37.9567"N	80°44'15.8263"W	29.70	269.746	0.52	-0.06	17.45
7148.00	1.870	263.100	7146.80	18.02	-1.55	-35.27	1714187.17	14415371.05	39°41'37.9428"N	80°44'15.8977"W	35.31	267.478	0.28	0.11	8.36
7369.99	2.090	264.010	7368.66	21.48	-2.41	-42.89	1714179.55	14415370.19	39°41'37.9346"N	80°44'15.9952"W	42.96	266.782	0.10	0.10	0.41
7525.98	2.090	265.160	7524.55	24.14	-2.95	-48.56	1714173.89	14415369.65	39°41'37.9294"N	80°44'16.0677"W	48.65	266.525	0.03	0.00	0.74
7557.98	2.260	260.250	7556.52	24.66	-3.10	-49.76	1714172.69	14415369.50	39°41'37.9279"N	80°44'16.0831"W	49.86	266.430	0.79	0.53	-15.34
7651.98	3.440	234.570	7650.41	25.29	-5.05	-53.89	1714168.57	14415367.55	39°41'37.9088"N	80°44'16.1359"W	54.12	264.643	1.82	1.26	-27.32
7744.98	6.160	216.580	7743.08	23.46	-10.68	-59.13	1714163.32	14415361.93	39°41'37.8533"N	80°44'16.2033"W	60.09	259.763	3.31	2.92	-19.34
7837.98	7.480	209.910	7835.42	19.00	-19.93	-65.13	1714157.33	14415352.67	39°41'37.7620"N	80°44'16.2803"W	68.11	252.982	1.65	1.42	-7.17
7932.98	9.050	206.640	7929.43	12.46	-31.97	-71.56	1714150.90	14415340.64	39°41'37.6433"N	80°44'16.3630"W	78.38	245.925	1.72	1.65	-3.44
8025.98	12.640	204.430	8020.76	3.34	-47.78	-79.05	1714143.41	14415324.84	39°41'37.4873"N	80°44'16.4594"W	92.37	238.850	3.89	3.86	-2.38
8120.98	16.180	202.760	8112.75	-9.63	-69.46	-88.47	1714133.99	14415303.17	39°41'37.2733"N	80°44'16.5808"W	112.48	231.866	3.75	3.73	-1.76
8214.98	16.580	205.800	8202.94	-23.87	-93.61	-99.38	1714123.09	14415279.03	39°41'37.0349"N	80°44'16.7212"W	136.52	226.712	1.01	0.43	3.23
8403.98	14.920	213.910	8384.86	-47.21	-138.09	-124.69	1714097.79	14415234.57	39°41'36.5961"N	80°44'17.0467"W	186.05	222.082	1.46	-0.88	4.29
8496.98	15.380	213.680	8474.63	-56.70	-158.29	-138.21	1714084.27	14415214.38	39°41'36.3968"N	80°44'17.2204"W	210.14	221.127	0.50	0.49	-0.25
8590.98	15.870	214.450	8565.15	-66.47	-179.26	-152.39	1714070.10	14415193.41	39°41'36.1900"N	80°44'17.4026"W	235.28	220.369	0.57	0.52	0.82



RECEIVED
Office Of Oil and Gas

OCT 02 2024

WV Department of
Environmental Protection

Actual Wellpath Report

Elmer N-15 HU AWP Proj: 29166'

Page 7 of 16



REFERENCE WELLPATH IDENTIFICATION			
Operator	EQT (TUG HILL OPERATING, LLC)	Well	Elmer N-15 HU
Field	Wetzel	API	47-103-03536-0000
Facility	Elmer Pad	Wellbore	Elmer N-15 HU AWB
Slot	Slot 15		

WELLPATH DATA (373 stations)															
MD [ft]	Inclination [°]	Azimuth [°]	TVD [ft]	Vert Sect [ft]	North [ft]	East [ft]	Grid East [US ft]	Grid North [US ft]	Latitude	Longitude	Closure Dist [ft]	Closure Dir [°]	DLS [°/100ft]	Build Rate [°/100ft]	Turn Rate [°/100ft]
8684.98	15.260	211.630	8655.71	-76.61	-200.39	-166.15	1714056.34	14415172.29	39°41'35.9816"N	80°44'17.5794"W	260.31	219.664	1.03	-0.65	-3.00
8778.98	13.660	207.900	8746.73	-87.23	-220.73	-177.83	1714044.67	14415151.95	39°41'35.7808"N	80°44'17.7296"W	283.46	218.857	1.97	-1.70	-3.97
8872.98	13.560	206.890	8838.09	-98.08	-240.37	-188.01	1714034.49	14415132.32	39°41'35.5871"N	80°44'17.8605"W	305.17	218.032	0.27	-0.11	-1.07
8966.98	14.030	206.200	8929.38	-109.37	-260.42	-198.03	1714024.48	14415112.28	39°41'35.3892"N	80°44'17.9894"W	327.16	217.250	0.53	0.50	-0.73
9059.98	14.760	203.030	9019.46	-121.69	-281.44	-207.64	1714014.87	14415091.27	39°41'35.1817"N	80°44'18.1131"W	349.75	216.419	1.15	0.78	-3.41
9153.98	16.460	204.020	9109.99	-135.55	-304.63	-217.75	1714004.77	14415068.09	39°41'34.9529"N	80°44'18.2433"W	374.45	215.557	1.83	1.81	1.05
9246.98	16.360	205.640	9199.20	-149.45	-328.47	-228.78	1713993.74	14415044.26	39°41'34.7176"N	80°44'18.3853"W	400.29	214.857	0.50	-0.11	1.74
9339.98	15.890	211.610	9288.55	-161.64	-351.12	-241.12	1713981.41	14415021.62	39°41'34.4941"N	80°44'18.5440"W	425.94	214.478	1.85	-0.51	6.42
9433.98	15.200	213.140	9379.11	-172.06	-372.40	-254.60	1713967.93	14415000.35	39°41'34.2842"N	80°44'18.7173"W	451.11	214.359	0.85	-0.73	1.63
9527.98	15.250	214.810	9469.81	-181.62	-392.87	-268.39	1713954.14	14414979.89	39°41'34.0823"N	80°44'18.8945"W	475.79	214.340	0.47	0.05	1.78
9621.98	15.520	211.630	9560.44	-191.59	-413.73	-282.05	1713940.50	14414959.04	39°41'33.8765"N	80°44'19.0699"W	500.72	214.283	0.94	0.29	-3.38
9715.98	16.560	208.830	9650.78	-203.22	-436.17	-295.10	1713927.45	14414936.60	39°41'33.6551"N	80°44'19.2378"W	526.62	214.081	1.38	1.11	-2.98
9811.98	16.480	207.500	9742.82	-216.29	-460.23	-307.99	1713914.57	14414912.55	39°41'33.4176"N	80°44'19.4035"W	553.78	213.790	0.40	-0.08	-1.39
9905.98	15.960	205.390	9833.08	-229.54	-483.74	-319.68	1713902.87	14414889.06	39°41'33.1857"N	80°44'19.5540"W	579.83	213.459	0.84	-0.55	-2.24
10000.98	15.160	207.060	9924.60	-242.50	-506.60	-330.94	1713891.63	14414866.20	39°41'32.9601"N	80°44'19.6988"W	605.11	213.155	0.97	-0.84	1.76
10095.98	14.070	205.570	10016.52	-254.64	-528.08	-341.57	1713880.99	14414844.73	39°41'32.7481"N	80°44'19.8356"W	628.92	212.896	1.21	-1.15	-1.57
10189.98	14.550	207.060	10107.61	-266.42	-548.90	-351.87	1713870.69	14414823.92	39°41'32.5426"N	80°44'19.9682"W	652.00	212.662	0.64	0.51	1.59
10283.98	14.730	208.110	10198.55	-278.01	-569.96	-362.88	1713859.70	14414802.87	39°41'32.3349"N	80°44'20.1097"W	675.67	212.484	0.34	0.19	1.12
10377.98	15.080	209.700	10289.39	-289.31	-591.12	-374.57	1713848.01	14414781.72	39°41'32.1261"N	80°44'20.2601"W	699.80	212.361	0.57	0.37	1.69
10471.98	14.810	210.840	10380.21	-300.13	-612.06	-386.78	1713835.80	14414760.79	39°41'31.9195"N	80°44'20.4171"W	724.03	212.291	0.42	-0.29	1.21
10564.98	13.670	209.520	10470.35	-310.36	-631.82	-398.29	1713824.30	14414741.03	39°41'31.7245"N	80°44'20.5651"W	746.89	212.227	1.27	-1.23	-1.42
10601.98	12.840	209.340	10506.37	-314.26	-639.21	-402.46	1713820.13	14414733.64	39°41'31.6516"N	80°44'20.6187"W	755.36	212.195	2.25	-2.24	-0.49
10635.00	12.170	209.760	10538.60	-317.53	-645.43	-405.99	1713816.60	14414727.42	39°41'31.5902"N	80°44'20.6640"W	762.50	212.170	2.05	-2.03	1.27
10717.00	11.670	210.720	10618.84	-325.10	-660.07	-414.51	1713808.08	14414712.80	39°41'31.4458"N	80°44'20.7736"W	779.43	212.128	0.66	-0.61	1.17
10810.00	17.250	212.340	10708.85	-334.94	-679.82	-426.70	1713795.90	14414693.05	39°41'31.2510"N	80°44'20.9303"W	802.64	212.115	6.02	6.00	1.74
10903.00	13.470	249.190	10798.72	-338.33	-695.36	-444.25	1713778.35	14414677.52	39°41'31.0979"N	80°44'21.1554"W	825.16	212.574	11.03	-4.06	39.62
10997.00	13.570	274.500	10890.20	-329.22	-698.38	-465.50	1713757.12	14414674.49	39°41'31.0686"N	80°44'21.4273"W	839.30	213.685	6.25	0.11	26.93
11090.00	18.370	286.040	10979.61	-311.43	-693.47	-490.48	1713732.14	14414679.40	39°41'31.1178"N	80°44'21.7467"W	849.40	215.271	6.16	5.16	12.41
11183.00	21.790	296.650	11066.97	-285.38	-681.68	-520.01	1713702.63	14414691.19	39°41'31.2353"N	80°44'22.1240"W	857.38	217.338	5.36	3.68	11.41
11276.00	25.090	300.440	11152.29	-252.77	-663.94	-552.45	1713670.20	14414708.92	39°41'31.4115"N	80°44'22.5383"W	863.72	219.763	3.90	3.55	4.08



RECEIVED
Office Of Oil and Gas
OCT 02 2024
WV Department of
Environmental Protection

Actual Wellpath Report

Elmer N-15 HU AWP Proj: 29166'
Page 8 of 16



REFERENCE WELLPATH IDENTIFICATION				
Operator	EQT (TUG HILL OPERATING, LLC)		Well	Elmer N-15 HU
Field	Wetzel		API	47-103-03536-0000
Facility	Elmer Pad		Wellbore	Elmer N-15 HU AWB
Slot	Slot 15			

WELLPATH DATA (373 stations)															
MD [ft]	Inclination [°]	Azimuth [°]	TVD [ft]	Vert Sect [ft]	North [ft]	East [ft]	Grid East [US ft]	Grid North [US ft]	Latitude	Longitude	Closure Dist [ft]	Closure Dir [°]	DLS [°/100ft]	Build Rate [°/100ft]	Turn Rate [°/100ft]
11368.00	26.590	299.950	11235.09	-216.92	-643.78	-587.11	1713635.55	14414729.08	39°41'31.6118"N	80°44'22.9809"W	871.29	222.364	1.65	1.63	-0.53
11462.00	30.390	302.390	11317.69	-176.47	-620.53	-625.43	1713597.25	14414752.32	39°41'31.8426"N	80°44'23.4703"W	881.03	225.225	4.23	4.04	2.60
11555.00	35.660	310.170	11395.67	-129.02	-590.40	-666.05	1713556.64	14414782.43	39°41'32.1415"N	80°44'23.9888"W	890.06	228.446	7.26	5.67	8.37
11647.00	42.460	315.480	11467.09	-72.78	-550.91	-708.38	1713514.33	14414821.91	39°41'32.5330"N	80°44'24.5288"W	897.39	232.128	8.23	7.39	5.77
11740.00	50.330	317.500	11531.18	-6.57	-502.06	-754.65	1713468.08	14414870.74	39°41'33.0171"N	80°44'25.1189"W	906.40	236.365	8.61	8.46	2.17
11833.00	57.520	320.500	11585.92	67.85	-445.32	-803.85	1713418.90	14414927.46	39°41'33.5793"N	80°44'25.7462"W	918.96	241.014	8.16	7.73	3.23
11926.00	65.780	325.990	11630.07	149.44	-379.74	-852.63	1713370.13	14414993.01	39°41'34.2287"N	80°44'26.3679"W	933.38	245.993	10.29	8.88	5.90
12019.00	70.060	329.390	11665.03	235.57	-306.92	-898.65	1713324.14	14415065.80	39°41'34.9498"N	80°44'26.9538"W	949.61	251.143	5.71	4.60	3.66
12112.00	77.210	329.340	11691.21	324.65	-230.19	-944.09	1713278.72	14415142.50	39°41'35.7094"N	80°44'27.5322"W	971.74	256.297	7.69	7.69	-0.05
12205.00	84.630	330.530	11705.88	416.28	-150.76	-990.05	1713232.77	14415221.90	39°41'36.4956"N	80°44'28.1173"W	1001.47	261.342	8.08	7.98	1.28
12299.00	88.730	330.180	11711.32	509.92	-69.22	-1036.46	1713186.38	14415303.41	39°41'37.3028"N	80°44'28.7080"W	1038.77	266.179	4.38	4.36	-0.37
12392.00	90.030	330.660	11712.33	602.73	11.65	-1082.36	1713140.49	14415384.25	39°41'38.1034"N	80°44'29.2922"W	1082.43	270.617	1.49	1.40	0.52
12485.00	90.550	330.510	11711.86	695.52	92.66	-1128.04	1713094.84	14415465.22	39°41'38.9053"N	80°44'29.8736"W	1131.84	274.696	0.58	0.56	-0.16
12577.00	90.550	330.320	11710.97	787.33	172.66	-1173.46	1713049.44	14415545.19	39°41'39.6972"N	80°44'30.4517"W	1186.09	278.370	0.21	0.00	-0.21
12669.00	90.640	330.130	11710.02	879.16	252.51	-1219.14	1713003.77	14415625.01	39°41'40.4877"N	80°44'31.0331"W	1245.02	281.702	0.23	0.10	-0.21
12764.00	90.550	330.610	11709.03	973.97	335.09	-1266.11	1712956.82	14415707.55	39°41'41.3050"N	80°44'31.6309"W	1309.70	284.824	0.51	-0.09	0.51
12856.00	90.610	330.630	11708.10	1065.76	415.25	-1311.24	1712911.71	14415787.68	39°41'42.0986"N	80°44'32.2053"W	1375.42	287.572	0.07	0.07	0.02
12949.00	90.550	330.560	11707.16	1158.55	496.26	-1356.90	1712866.07	14415868.67	39°41'42.9005"N	80°44'32.7865"W	1444.80	290.089	0.10	-0.06	-0.08
13042.00	90.550	330.450	11706.27	1251.34	577.21	-1402.69	1712820.30	14415949.58	39°41'43.7018"N	80°44'33.3692"W	1516.80	292.367	0.12	0.00	-0.12
13135.00	90.540	330.390	11705.38	1344.15	658.08	-1448.59	1712774.41	14416030.42	39°41'44.5023"N	80°44'33.9536"W	1591.07	294.432	0.07	-0.01	-0.06
13228.00	90.640	330.330	11704.42	1436.97	738.91	-1494.58	1712728.44	14416111.22	39°41'45.3024"N	80°44'34.5389"W	1667.26	296.307	0.13	0.11	-0.06
13322.00	90.610	330.440	11703.40	1530.77	820.62	-1541.03	1712682.01	14416192.90	39°41'46.1113"N	80°44'35.1302"W	1745.91	298.036	0.12	-0.03	0.12
13415.00	90.550	330.370	11702.46	1623.58	901.49	-1586.96	1712636.10	14416273.73	39°41'46.9118"N	80°44'35.7148"W	1825.13	299.599	0.10	-0.06	-0.08
13508.00	91.040	330.460	11701.17	1716.39	982.35	-1632.87	1712590.21	14416354.57	39°41'47.7123"N	80°44'36.2991"W	1905.59	301.032	0.54	0.53	0.10
13602.00	91.100	330.670	11699.41	1810.17	1064.21	-1679.06	1712544.04	14416436.38	39°41'48.5225"N	80°44'36.8870"W	1987.90	302.367	0.23	0.06	0.22
13695.00	91.100	330.220	11697.63	1902.96	1145.09	-1724.92	1712498.19	14416517.24	39°41'49.3231"N	80°44'37.4708"W	2070.41	303.578	0.48	0.00	-0.48
13788.00	91.070	330.510	11695.87	1995.76	1225.91	-1770.90	1712452.23	14416598.03	39°41'50.1232"N	80°44'38.0561"W	2153.82	304.693	0.31	-0.03	0.31
13881.00	91.040	330.330	11694.15	2088.56	1306.78	-1816.80	1712406.35	14416678.86	39°41'50.9236"N	80°44'38.6403"W	2237.95	305.726	0.20	-0.03	-0.19
13974.00	91.100	330.470	11692.42	2181.35	1387.62	-1862.73	1712360.44	14416759.68	39°41'51.7240"N	80°44'39.2250"W	2322.77	306.684	0.16	0.06	0.15
14067.00	91.060	330.330	11690.66	2274.15	1468.47	-1908.66	1712314.53	14416840.49	39°41'52.5243"N	80°44'39.8096"W	2408.19	307.574	0.16	-0.04	-0.15



RECEIVED
Office Of Oil and Gas

OCT 02 2024

WV Department of
Environmental Protection

Actual Wellpath Report

Elmer N-15 HU AWP Proj: 29166'

Page 9 of 16



REFERENCE WELLPATH IDENTIFICATION

Operator	EQT (TUG HILL OPERATING, LLC)	Well	Elmer N-15 HU
Field	Wetzel	API	47-103-03536-0000
Facility	Elmer Pad	Wellbore	Elmer N-15 HU AWB
Slot	Slot 15		

WELLPATH DATA (373 stations)

MD [ft]	Inclination [°]	Azimuth [°]	TVD [ft]	Vert Sect [ft]	North [ft]	East [ft]	Grid East [US ft]	Grid North [US ft]	Latitude	Longitude	Closure Dist [ft]	Closure Dir [°]	DLS [°/100ft]	Build Rate [°/100ft]	Turn Rate [°/100ft]
14161.00	90.690	330.270	11689.23	2367.96	1550.11	-1955.22	1712267.98	14416922.10	39°41'53.3324"N	80°44'40.4024"W	2495.15	308.408	0.40	-0.39	-0.06
14254.00	90.760	329.660	11688.05	2460.81	1630.62	-2001.77	1712221.45	14417002.57	39°41'54.1293"N	80°44'40.9949"W	2581.86	309.166	0.66	0.08	-0.66
14346.00	90.730	328.930	11686.85	2552.72	1709.72	-2048.74	1712174.50	14417081.64	39°41'54.9123"N	80°44'41.5930"W	2668.42	309.846	0.79	-0.03	-0.79
14440.00	90.720	329.300	11685.67	2646.63	1790.38	-2096.99	1712126.27	14417162.27	39°41'55.7109"N	80°44'42.2073"W	2757.32	310.490	0.39	-0.01	0.39
14533.00	90.720	329.210	11684.50	2739.54	1870.30	-2144.53	1712078.75	14417242.16	39°41'56.5021"N	80°44'42.8126"W	2845.53	311.093	0.10	0.00	-0.10
14627.00	90.660	329.200	11683.36	2833.44	1951.04	-2192.65	1712030.65	14417322.87	39°41'57.3014"N	80°44'43.4253"W	2935.01	311.663	0.06	-0.06	-0.01
14721.00	90.690	329.150	11682.26	2927.36	2031.76	-2240.81	1711982.50	14417403.55	39°41'58.1004"N	80°44'44.0386"W	3024.78	312.199	0.06	0.03	-0.05
14814.00	90.720	329.240	11681.11	3020.27	2111.63	-2288.44	1711934.90	14417483.40	39°41'58.8911"N	80°44'44.6450"W	3113.83	312.699	0.10	0.03	0.10
14907.00	90.690	329.160	11679.97	3113.18	2191.51	-2336.05	1711887.30	14417563.24	39°41'59.6819"N	80°44'45.2513"W	3203.10	313.171	0.09	-0.03	-0.09
15001.00	90.690	329.000	11678.84	3207.09	2272.14	-2384.35	1711839.02	14417643.84	39°42'0.4801"N	80°44'45.8663"W	3293.60	313.620	0.17	0.00	-0.17
15094.00	90.660	329.160	11677.74	3300.01	2351.92	-2432.14	1711791.26	14417723.59	39°42'1.2699"N	80°44'46.4747"W	3383.31	314.039	0.18	-0.03	0.17
15187.00	90.660	329.140	11676.67	3392.93	2431.76	-2479.82	1711743.59	14417803.40	39°42'2.0602"N	80°44'47.0819"W	3473.18	314.439	0.02	0.00	-0.02
15280.00	90.690	329.480	11675.57	3485.83	2511.73	-2527.29	1711696.15	14417883.33	39°42'2.8519"N	80°44'47.6863"W	3563.14	314.823	0.37	0.03	0.37
15373.00	90.690	329.160	11674.45	3578.73	2591.70	-2574.73	1711648.71	14417963.28	39°42'3.6436"N	80°44'48.2904"W	3653.24	315.188	0.34	0.00	-0.34
15467.00	90.750	329.220	11673.27	3672.64	2672.43	-2622.88	1711600.59	14418043.97	39°42'4.4427"N	80°44'48.9034"W	3744.51	315.536	0.09	0.06	0.06
15560.00	90.720	329.290	11672.08	3765.55	2752.35	-2670.42	1711553.07	14418123.86	39°42'5.2339"N	80°44'49.5088"W	3834.91	315.866	0.08	-0.03	0.08
15654.00	90.660	329.680	11670.95	3859.43	2833.33	-2718.14	1711505.36	14418204.81	39°42'6.0355"N	80°44'50.1165"W	3926.33	316.189	0.42	-0.06	0.41
15747.00	90.660	329.260	11669.88	3952.33	2913.43	-2765.38	1711458.14	14418284.88	39°42'6.8285"N	80°44'50.7180"W	4016.89	316.493	0.45	0.00	-0.45
15839.00	90.690	329.040	11668.79	4044.24	2992.41	-2812.56	1711410.99	14418363.82	39°42'7.6103"N	80°44'51.3187"W	4106.70	316.775	0.24	0.03	-0.24
15932.00	90.750	329.650	11667.62	4137.14	3072.40	-2859.97	1711363.59	14418443.79	39°42'8.4022"N	80°44'51.9224"W	4197.51	317.051	0.66	0.06	0.66
16024.00	90.720	329.300	11666.44	4229.03	3151.65	-2906.69	1711316.89	14418523.00	39°42'9.1866"N	80°44'52.5174"W	4287.39	317.315	0.38	-0.03	-0.38
16117.00	90.720	329.290	11665.28	4321.93	3231.60	-2954.18	1711269.42	14418602.92	39°42'9.9781"N	80°44'53.1220"W	4378.40	317.568	0.01	0.00	-0.01
16210.00	90.690	329.230	11664.13	4414.84	3311.53	-3001.71	1711221.91	14418682.82	39°42'10.7694"N	80°44'53.7273"W	4469.51	317.810	0.07	-0.03	-0.06
16303.00	90.720	329.200	11662.99	4507.75	3391.42	-3049.31	1711174.33	14418762.68	39°42'11.5602"N	80°44'54.3334"W	4560.70	318.041	0.05	0.03	-0.03
16396.00	90.690	329.060	11661.84	4600.66	3471.24	-3097.02	1711126.64	14418842.46	39°42'12.3504"N	80°44'54.9410"W	4651.99	318.261	0.15	-0.03	-0.15
16489.00	90.750	329.170	11660.67	4693.58	3551.04	-3144.75	1711078.92	14418922.24	39°42'13.1404"N	80°44'55.5489"W	4743.35	318.472	0.13	0.06	0.12
16583.00	91.020	329.110	11659.22	4787.49	3631.73	-3192.96	1711030.73	14419002.89	39°42'13.9391"N	80°44'56.1628"W	4835.75	318.679	0.29	0.29	-0.06
16676.00	91.240	329.270	11657.39	4880.39	3711.59	-3240.59	1710983.12	14419082.72	39°42'14.7297"N	80°44'56.7693"W	4927.20	318.876	0.29	0.24	0.17
16768.00	91.120	329.380	11655.49	4972.28	3790.70	-3287.51	1710936.22	14419161.80	39°42'15.5128"N	80°44'57.3668"W	5017.68	319.066	0.18	-0.13	0.12
16861.00	91.180	329.580	11653.63	5065.15	3870.79	-3334.73	1710889.02	14419241.86	39°42'16.3057"N	80°44'57.9681"W	5109.16	319.255	0.22	0.06	0.22



RECEIVED
Office Of Oil and Gas

OCT 02 2024

WV Department of
Environmental Protection

Actual Wellpath Report

Elmer N-15 HU AWP Proj: 29166'

Page 10 of 16



REFERENCE WELLPATH IDENTIFICATION

Operator	EQT (TUG HILL OPERATING, LLC)	Well	Elmer N-15 HU
Field	Wetzel	API	47-103-03536-0000
Facility	Elmer Pad	Wellbore	Elmer N-15 HU AWB
Slot	Slot 15		

WELLPATH DATA (373 stations)

MD [ft]	Inclination [°]	Azimuth [°]	TVD [ft]	Vert Sect [ft]	North [ft]	East [ft]	Grid East [US ft]	Grid North [US ft]	Latitude	Longitude	Closure Dist [ft]	Closure Dir [°]	DLS [°/100ft]	Build Rate [°/100ft]	Turn Rate [°/100ft]
16954.00	91.120	329.340	11651.76	5158.03	3950.88	-3381.98	1710841.79	14419321.91	39°42'17.0984"N	80°44'58.5698"W	5200.70	319.436	0.27	-0.06	-0.26
17047.00	91.240	329.380	11649.85	5250.92	4030.88	-3429.37	1710794.42	14419401.88	39°42'17.8903"N	80°44'59.1732"W	5292.31	319.610	0.14	0.13	0.04
17140.00	91.210	329.440	11647.86	5343.80	4110.92	-3476.68	1710747.12	14419481.89	39°42'18.6827"N	80°44'59.7758"W	5383.95	319.778	0.07	-0.03	0.06
17233.00	91.210	329.550	11645.89	5436.68	4191.02	-3523.88	1710699.94	14419561.97	39°42'19.4757"N	80°45'0.3768"W	5475.62	319.942	0.12	0.00	0.12
17325.00	90.900	329.140	11644.20	5528.57	4270.15	-3570.78	1710653.06	14419641.06	39°42'20.2590"N	80°45'0.9740"W	5566.39	320.097	0.56	-0.34	-0.45
17418.00	90.780	329.390	11642.84	5621.47	4350.08	-3618.31	1710605.56	14419720.96	39°42'21.0502"N	80°45'1.5793"W	5658.21	320.247	0.30	-0.13	0.27
17511.00	90.720	329.460	11641.62	5714.36	4430.15	-3665.61	1710558.27	14419800.99	39°42'21.8427"N	80°45'2.1816"W	5750.03	320.395	0.10	-0.06	0.08
17603.00	90.560	329.190	11640.59	5806.27	4509.27	-3712.54	1710511.36	14419880.08	39°42'22.6260"N	80°45'2.7793"W	5840.93	320.535	0.34	-0.17	-0.29
17697.00	90.530	329.250	11639.70	5900.18	4590.02	-3760.64	1710463.28	14419960.81	39°42'23.4254"N	80°45'3.3919"W	5933.86	320.672	0.07	-0.03	0.06
17790.00	90.590	329.160	11638.79	5993.09	4669.91	-3808.25	1710415.68	14420040.66	39°42'24.2162"N	80°45'3.9982"W	6025.85	320.803	0.12	0.06	-0.10
17884.00	90.500	329.400	11637.89	6087.00	4750.71	-3856.27	1710367.69	14420121.43	39°42'25.0161"N	80°45'4.6098"W	6118.83	320.933	0.27	-0.10	0.26
17978.00	90.620	329.330	11636.98	6180.90	4831.59	-3904.17	1710319.81	14420202.28	39°42'25.8167"N	80°45'5.2197"W	6211.82	321.060	0.15	0.13	-0.07
18070.00	90.560	329.440	11636.03	6272.80	4910.76	-3951.02	1710272.98	14420281.42	39°42'26.6004"N	80°45'5.8164"W	6302.86	321.181	0.14	-0.07	0.12
18164.00	90.530	329.190	11635.13	6366.70	4991.60	-3998.98	1710225.03	14420362.22	39°42'27.4006"N	80°45'6.4273"W	6395.93	321.300	0.27	-0.03	-0.27
18256.00	90.560	329.350	11634.26	6458.61	5070.67	-4045.99	1710178.04	14420441.27	39°42'28.1834"N	80°45'7.0260"W	6487.05	321.413	0.18	0.03	0.17
18349.00	90.620	330.400	11633.30	6551.47	5151.11	-4092.67	1710131.38	14420521.67	39°42'28.9796"N	80°45'7.6203"W	6579.04	321.532	1.13	0.06	1.13
18442.00	90.530	330.310	11632.37	6644.28	5231.93	-4138.66	1710085.40	14420602.46	39°42'29.7796"N	80°45'8.2060"W	6670.95	321.655	0.14	-0.10	-0.10
18535.00	90.500	330.240	11631.53	6737.10	5312.69	-4184.77	1710039.31	14420683.19	39°42'30.5790"N	80°45'8.7932"W	6762.91	321.773	0.08	-0.03	-0.08
18628.00	90.560	330.410	11630.67	6829.92	5393.49	-4230.82	1709993.29	14420763.95	39°42'31.3787"N	80°45'9.3794"W	6854.89	321.888	0.19	0.06	0.18
18721.00	90.620	329.950	11629.71	6922.75	5474.17	-4277.06	1709947.06	14420844.60	39°42'32.1774"N	80°45'9.9683"W	6946.93	321.999	0.50	0.06	-0.49
18814.00	90.560	330.380	11628.76	7015.59	5554.84	-4323.32	1709900.82	14420925.24	39°42'32.9758"N	80°45'10.5574"W	7038.99	322.106	0.47	-0.06	0.46
18907.00	90.500	330.570	11627.90	7108.39	5635.76	-4369.15	1709855.01	14421006.13	39°42'33.7768"N	80°45'11.1410"W	7131.01	322.215	0.21	-0.06	0.20
19000.00	90.530	330.360	11627.06	7201.19	5716.67	-4415.00	1709809.18	14421087.01	39°42'34.5777"N	80°45'11.7247"W	7223.05	322.321	0.23	0.03	-0.23
19093.00	90.590	330.400	11626.15	7294.00	5797.51	-4460.96	1709763.24	14421167.82	39°42'35.3779"N	80°45'12.3100"W	7315.14	322.423	0.08	0.06	0.04
19185.00	90.530	330.220	11625.25	7385.83	5877.43	-4506.52	1709717.69	14421247.71	39°42'36.1689"N	80°45'12.8902"W	7406.28	322.521	0.21	-0.07	-0.20
19278.00	90.500	330.480	11624.42	7478.64	5958.25	-4552.53	1709671.70	14421328.49	39°42'36.9689"N	80°45'13.4760"W	7498.42	322.618	0.28	-0.03	0.28
19371.00	90.590	330.390	11623.53	7571.45	6039.14	-4598.42	1709625.83	14421409.35	39°42'37.7696"N	80°45'14.0603"W	7590.56	322.713	0.14	0.10	-0.10
19464.00	91.050	330.370	11622.20	7664.25	6119.98	-4644.38	1709579.89	14421490.16	39°42'38.5697"N	80°45'14.6456"W	7682.73	322.806	0.50	0.49	-0.02
19557.00	91.090	329.610	11620.46	7757.09	6200.50	-4690.88	1709533.41	14421570.64	39°42'39.3667"N	80°45'15.2378"W	7774.99	322.891	0.82	0.04	-0.82
19650.00	91.080	330.370	11618.70	7849.93	6281.01	-4737.39	1709486.92	14421651.13	39°42'40.1637"N	80°45'15.8301"W	7867.27	322.975	0.82	-0.01	0.82



RECEIVED
Office Of Oil and Gas
OCT 02 2024
WV Department of
Environmental Protection

Actual Wellpath Report

Elmer N-15 HU AWP Proj: 29166'

Page 11 of 16



REFERENCE WELLPATH IDENTIFICATION

Operator	EQT (TUG HILL OPERATING, LLC)	Well	Elmer N-15 HU
Field	Wetzel	API	47-103-03536-0000
Facility	Elmer Pad	Wellbore	Elmer N-15 HU AWB
Slot	Slot 15		

WELLPATH DATA (373 stations)

MD [ft]	Inclination [°]	Azimuth [°]	TVD [ft]	Vert Sect [ft]	North [ft]	East [ft]	Grid East [US ft]	Grid North [US ft]	Latitude	Longitude	Closure Dist [ft]	Closure Dir [°]	DLS [°/100ft]	Build Rate [°/100ft]	Turn Rate [°/100ft]
19744.00	90.990	330.400	11617.00	7943.73	6362.72	-4783.83	1709440.49	14421732.80	39°42'40.9725"N	80°45'16.4215"W	7960.48	323.062	0.10	-0.10	0.03
19836.00	91.080	330.550	11615.34	8035.52	6442.76	-4829.16	1709395.18	14421812.81	39°42'41.7647"N	80°45'16.9988"W	8051.70	323.147	0.19	0.10	0.16
19929.00	91.050	330.550	11613.61	8128.30	6523.73	-4874.88	1709349.48	14421893.75	39°42'42.5661"N	80°45'17.5809"W	8143.92	323.231	0.03	-0.03	0.00
20022.00	91.880	330.410	11611.24	8221.08	6604.63	-4920.69	1709303.69	14421974.61	39°42'43.3669"N	80°45'18.1642"W	8236.16	323.313	0.91	0.89	-0.15
20115.00	91.120	330.370	11608.80	8313.86	6685.45	-4966.62	1709257.77	14422055.41	39°42'44.1669"N	80°45'18.7492"W	8328.42	323.391	0.82	-0.82	-0.04
20208.00	90.840	330.240	11607.21	8406.67	6766.23	-5012.68	1709211.73	14422136.15	39°42'44.9664"N	80°45'19.3358"W	8420.74	323.468	0.33	-0.30	-0.14
20301.00	90.840	330.250	11605.85	8499.49	6846.96	-5058.83	1709165.60	14422216.85	39°42'45.7655"N	80°45'19.9235"W	8513.09	323.541	0.01	0.00	0.01
20394.00	90.810	330.490	11604.51	8592.30	6927.79	-5104.81	1709119.64	14422297.65	39°42'46.5656"N	80°45'20.5090"W	8605.43	323.615	0.26	-0.03	0.26
20487.00	90.840	330.530	11603.17	8685.09	7008.73	-5150.59	1709073.88	14422378.56	39°42'47.3668"N	80°45'21.0920"W	8697.75	323.689	0.05	0.03	0.04
20580.00	90.840	330.470	11601.81	8777.89	7089.67	-5196.38	1709028.11	14422459.46	39°42'48.1678"N	80°45'21.6751"W	8790.09	323.760	0.06	0.00	-0.06
20673.00	90.840	330.330	11600.44	8870.69	7170.52	-5242.31	1708982.20	14422540.28	39°42'48.9681"N	80°45'22.2600"W	8882.46	323.830	0.15	0.00	-0.15
20766.00	90.840	330.470	11599.08	8963.50	7251.38	-5288.24	1708936.28	14422621.11	39°42'49.7684"N	80°45'22.8450"W	8974.85	323.898	0.15	0.00	0.15
20859.00	90.810	330.640	11597.74	9056.28	7332.35	-5333.95	1708890.59	14422702.05	39°42'50.5700"N	80°45'23.4271"W	9067.22	323.966	0.19	-0.03	0.18
20953.00	90.870	330.380	11596.36	9150.08	7414.17	-5380.22	1708844.34	14422783.83	39°42'51.3797"N	80°45'24.0163"W	9160.60	324.033	0.28	0.06	-0.28
21047.00	90.840	330.320	11594.96	9243.88	7495.85	-5426.72	1708797.86	14422865.48	39°42'52.1882"N	80°45'24.6085"W	9254.03	324.097	0.07	-0.03	-0.06
21140.00	90.810	330.670	11593.62	9336.68	7576.78	-5472.51	1708752.08	14422946.38	39°42'52.9893"N	80°45'25.1917"W	9346.44	324.160	0.38	-0.03	0.38
21233.00	90.840	330.410	11592.28	9429.47	7657.75	-5518.25	1708706.36	14423027.32	39°42'53.7907"N	80°45'25.7742"W	9438.86	324.223	0.28	0.03	-0.28
21326.00	90.810	330.380	11590.94	9522.27	7738.60	-5564.19	1708660.44	14423108.13	39°42'54.5909"N	80°45'26.3592"W	9531.32	324.283	0.05	-0.03	-0.03
21419.00	90.900	330.560	11589.56	9615.07	7819.51	-5610.02	1708614.63	14423189.01	39°42'55.3918"N	80°45'26.9429"W	9623.77	324.343	0.22	0.10	0.19
21512.00	90.560	330.480	11588.37	9707.86	7900.46	-5655.78	1708568.88	14423269.93	39°42'56.1930"N	80°45'27.5258"W	9716.23	324.402	0.38	-0.37	-0.09
21605.00	90.590	330.360	11587.44	9800.67	7981.33	-5701.69	1708523.00	14423350.78	39°42'56.9935"N	80°45'28.1104"W	9808.72	324.459	0.13	0.03	-0.13
21699.00	90.560	330.500	11586.49	9894.48	8063.09	-5748.08	1708476.63	14423432.50	39°42'57.8027"N	80°45'28.7012"W	9902.21	324.515	0.15	-0.03	0.15
21792.00	90.590	330.430	11585.56	9987.28	8144.00	-5793.92	1708430.81	14423513.38	39°42'58.6036"N	80°45'29.2850"W	9994.71	324.571	0.08	0.03	-0.08
21885.00	90.560	330.600	11584.63	10080.08	8224.95	-5839.69	1708385.05	14423594.29	39°42'59.4048"N	80°45'29.8679"W	10087.21	324.625	0.19	-0.03	0.18
21978.00	90.530	330.620	11583.74	10172.86	8305.98	-5885.33	1708339.43	14423675.29	39°43'0.2068"N	80°45'30.4492"W	10179.70	324.680	0.04	-0.03	0.02
22071.00	90.590	330.580	11582.83	10265.65	8387.00	-5930.98	1708293.80	14423756.28	39°43'1.0087"N	80°45'31.0306"W	10272.21	324.733	0.08	0.06	-0.04
22164.00	91.110	330.380	11581.45	10358.45	8467.91	-5976.80	1708248.00	14423837.16	39°43'1.8096"N	80°45'31.6141"W	10364.73	324.785	0.60	0.56	-0.22
22257.00	90.620	330.560	11580.05	10451.25	8548.82	-6022.63	1708202.18	14423918.04	39°43'2.6105"N	80°45'32.1979"W	10457.27	324.835	0.56	-0.53	0.19
22350.00	90.590	329.210	11579.07	10544.10	8629.26	-6069.29	1708155.54	14423998.45	39°43'3.4067"N	80°45'32.7922"W	10549.90	324.880	1.45	-0.03	-1.45
22443.00	90.620	329.390	11578.09	10637.01	8709.23	-6116.77	1708108.08	14424078.38	39°43'4.1982"N	80°45'33.3970"W	10642.62	324.918	0.20	0.03	0.19



RECEIVED
Office Of Oil and Gas

OCT 02 2024

WV Department of
Environmental Protection

Actual Wellpath Report

Elmer N-15 HU AWP Proj: 29166'

Page 12 of 16



REFERENCE WELLPATH IDENTIFICATION

Operator	EQT (TUG HILL OPERATING, LLC)	Well	Elmer N-15 HU
Field	Wetzel	API	47-103-03536-0000
Facility	Elmer Pad	Wellbore	Elmer N-15 HU AWB
Slot	Slot 15		

WELLPATH DATA (373 stations)

MD [ft]	Inclination [°]	Azimuth [°]	TVD [ft]	Vert Sect [ft]	North [ft]	East [ft]	Grid East [US ft]	Grid North [US ft]	Latitude	Longitude	Closure Dist [ft]	Closure Dir [°]	DLS [°/100ft]	Build Rate [°/100ft]	Turn Rate [°/100ft]
22536.00	90.650	329.460	11577.06	10729.90	8789.29	-6164.07	1708060.80	14424158.41	39°43'4.9907"N	80°45'33.9996"W	10735.33	324.957	0.08	0.03	0.08
22629.00	90.530	329.290	11576.10	10822.80	8869.31	-6211.44	1708013.45	14424238.40	39°43'5.7828"N	80°45'34.6031"W	10828.05	324.995	0.22	-0.13	-0.18
22722.00	90.620	329.420	11575.16	10915.70	8949.32	-6258.84	1707966.06	14424318.38	39°43'6.5748"N	80°45'35.2070"W	10920.78	325.032	0.17	0.10	0.14
22815.00	90.590	329.130	11574.18	11008.61	9029.26	-6306.36	1707918.57	14424398.29	39°43'7.3661"N	80°45'35.8122"W	11013.52	325.068	0.31	-0.03	-0.31
22909.00	90.590	329.240	11573.21	11102.52	9109.99	-6354.51	1707870.44	14424478.98	39°43'8.1651"N	80°45'36.4257"W	11107.28	325.103	0.12	0.00	0.12
23001.00	90.590	329.270	11572.27	11194.43	9189.05	-6401.54	1707823.43	14424558.02	39°43'8.9477"N	80°45'37.0248"W	11199.03	325.137	0.03	0.00	0.03
23094.00	90.560	329.220	11571.33	11287.34	9268.97	-6449.09	1707775.89	14424637.90	39°43'9.7388"N	80°45'37.6307"W	11291.79	325.171	0.06	-0.03	-0.05
23188.00	90.650	329.030	11570.34	11381.26	9349.64	-6497.33	1707727.68	14424718.54	39°43'10.5374"N	80°45'38.2452"W	11385.57	325.203	0.22	0.10	-0.20
23281.00	90.560	329.450	11569.36	11474.17	9429.56	-6544.89	1707680.13	14424798.42	39°43'11.3284"N	80°45'38.8511"W	11478.33	325.236	0.46	-0.10	0.45
23374.00	90.530	329.090	11568.47	11567.07	9509.49	-6592.41	1707632.63	14424878.33	39°43'12.1196"N	80°45'39.4565"W	11571.10	325.269	0.39	-0.03	-0.39
23468.00	90.560	329.460	11567.58	11660.98	9590.30	-6640.43	1707584.63	14424959.10	39°43'12.9194"N	80°45'40.0684"W	11664.87	325.301	0.39	0.03	0.39
23560.00	90.560	329.200	11566.68	11752.88	9669.42	-6687.36	1707537.72	14425038.20	39°43'13.7027"N	80°45'40.6662"W	11756.64	325.332	0.28	0.00	-0.28
23653.00	90.560	329.490	11565.77	11845.79	9749.42	-6734.77	1707490.32	14425118.16	39°43'14.4945"N	80°45'41.2703"W	11849.41	325.364	0.31	0.00	0.31
23746.00	90.590	329.150	11564.84	11938.69	9829.40	-6782.22	1707442.89	14425198.11	39°43'15.2862"N	80°45'41.8748"W	11942.18	325.395	0.37	0.03	-0.37
23839.00	90.560	329.180	11563.91	12031.60	9909.25	-6829.89	1707395.24	14425277.93	39°43'16.0766"N	80°45'42.4821"W	12034.98	325.424	0.05	-0.03	0.03
23932.00	90.560	329.270	11563.00	12124.52	9989.15	-6877.47	1707347.68	14425357.80	39°43'16.8675"N	80°45'43.0884"W	12127.77	325.453	0.10	0.00	0.10
24026.00	90.740	329.160	11561.93	12218.42	10069.90	-6925.58	1707299.59	14425438.52	39°43'17.6668"N	80°45'43.7013"W	12221.56	325.482	0.22	0.19	-0.12
24119.00	90.960	329.320	11560.55	12311.33	10149.81	-6973.14	1707252.05	14425518.39	39°43'18.4577"N	80°45'44.3072"W	12314.35	325.510	0.29	0.24	0.17
24212.00	90.900	329.240	11559.04	12404.23	10229.75	-7020.64	1707204.57	14425598.30	39°43'19.2490"N	80°45'44.9124"W	12407.14	325.538	0.11	-0.06	-0.09
24305.00	90.900	329.520	11557.58	12497.12	10309.77	-7068.00	1707157.22	14425678.29	39°43'20.0411"N	80°45'45.5159"W	12499.92	325.567	0.30	0.00	0.30
24399.00	90.960	329.550	11556.05	12591.00	10390.78	-7115.66	1707109.59	14425759.27	39°43'20.8429"N	80°45'46.1230"W	12593.69	325.596	0.07	0.06	0.03
24492.00	90.960	328.980	11554.50	12683.90	10470.71	-7163.18	1707062.09	14425839.16	39°43'21.6341"N	80°45'46.7285"W	12686.48	325.623	0.61	0.00	-0.61
24585.00	90.900	329.410	11552.99	12776.80	10550.58	-7210.80	1707014.48	14425919.00	39°43'22.4246"N	80°45'47.3352"W	12779.29	325.649	0.47	-0.06	0.46
24679.00	91.020	329.270	11551.41	12870.70	10631.42	-7258.73	1706966.57	14425999.82	39°43'23.2249"N	80°45'47.9459"W	12873.09	325.676	0.20	0.13	-0.15
24771.00	90.830	329.610	11549.93	12962.59	10710.63	-7305.50	1706919.82	14426079.00	39°43'24.0089"N	80°45'48.5418"W	12964.88	325.703	0.42	-0.21	0.37
24863.00	91.170	329.250	11548.32	13054.47	10789.84	-7352.28	1706873.06	14426158.17	39°43'24.7929"N	80°45'49.1378"W	13056.67	325.729	0.54	0.37	-0.39
24957.00	91.170	329.050	11546.40	13148.37	10870.52	-7400.47	1706824.88	14426238.82	39°43'25.5915"N	80°45'49.7519"W	13150.48	325.754	0.21	0.00	-0.21
25049.00	91.260	329.400	11544.45	13240.27	10949.55	-7447.54	1706777.84	14426317.81	39°43'26.3737"N	80°45'50.3515"W	13242.29	325.778	0.39	0.10	0.38
25143.00	91.230	329.370	11542.41	13334.15	11030.42	-7495.40	1706730.00	14426398.66	39°43'27.1743"N	80°45'50.9613"W	13336.09	325.803	0.05	-0.03	-0.03
25235.00	91.200	329.330	11540.46	13426.04	11109.55	-7542.29	1706683.13	14426477.76	39°43'27.9575"N	80°45'51.5588"W	13427.89	325.827	0.05	-0.03	-0.04



RECEIVED
Office Of Oil and Gas
OCT 02 2024
WV Department of
Environmental Protection

Actual Wellpath Report

Elmer N-15 HU AWP Proj: 29166'
Page 13 of 16



REFERENCE WELLPATH IDENTIFICATION

Operator	EQT (TUG HILL OPERATING, LLC)	Well	Elmer N-15 HU
Field	Wetzel	API	47-103-03536-0000
Facility	Elmer Pad	Wellbore	Elmer N-15 HU AWB
Slot	Slot 15		

WELLPATH DATA (373 stations)

MD [ft]	Inclination [°]	Azimuth [°]	TVD [ft]	Vert Sect [ft]	North [ft]	East [ft]	Grid East [US ft]	Grid North [US ft]	Latitude	Longitude	Closure Dist [ft]	Closure Dir [°]	DLS [°/100ft]	Build Rate [°/100ft]	Turn Rate [°/100ft]
25329.00	91.230	329.290	11538.46	13519.92	11190.37	-7590.25	1706635.18	14426558.54	39°43'28.7574"N	80°45'52.1699"W	13521.70	325.852	0.05	0.03	-0.04
25422.00	91.230	329.410	11536.47	13612.81	11270.36	-7637.65	1706587.80	14426638.50	39°43'29.5492"N	80°45'52.7739"W	13614.50	325.875	0.13	0.00	0.13
25515.00	91.230	329.320	11534.47	13705.69	11350.36	-7685.03	1706540.44	14426718.47	39°43'30.3410"N	80°45'53.3776"W	13707.31	325.899	0.10	0.00	-0.10
25608.00	91.170	329.270	11532.52	13798.58	11430.31	-7732.51	1706492.98	14426798.38	39°43'31.1324"N	80°45'53.9825"W	13800.13	325.922	0.08	-0.06	-0.05
25701.00	90.990	329.170	11530.77	13891.48	11510.19	-7780.09	1706445.42	14426878.24	39°43'31.9231"N	80°45'54.5889"W	13892.96	325.944	0.22	-0.19	-0.11
25795.00	90.990	330.540	11529.15	13985.33	11591.46	-7827.29	1706398.24	14426959.48	39°43'32.7275"N	80°45'55.1902"W	13986.73	325.970	1.46	0.00	1.46
25888.00	90.920	330.820	11527.60	14078.10	11672.54	-7872.82	1706352.72	14427040.52	39°43'33.5299"N	80°45'55.7703"W	14079.40	326.001	0.31	-0.08	0.30
25982.00	90.650	330.770	11526.31	14171.86	11754.58	-7918.69	1706306.88	14427122.53	39°43'34.3419"N	80°45'56.3545"W	14173.07	326.033	0.29	-0.29	-0.05
26075.00	90.740	330.520	11525.18	14264.64	11835.63	-7964.27	1706261.31	14427203.55	39°43'35.1441"N	80°45'56.9352"W	14265.76	326.063	0.29	0.10	-0.27
26167.00	90.710	330.490	11524.02	14356.44	11915.70	-8009.57	1706216.03	14427283.59	39°43'35.9366"N	80°45'57.5122"W	14357.48	326.092	0.05	-0.03	-0.03
26261.00	90.680	330.220	11522.88	14450.25	11997.39	-8056.06	1706169.56	14427365.25	39°43'36.7451"N	80°45'58.1045"W	14451.21	326.119	0.29	-0.03	-0.29
26354.00	90.710	330.190	11521.75	14543.08	12078.10	-8102.26	1706123.37	14427445.92	39°43'37.5439"N	80°45'58.6932"W	14543.97	326.145	0.05	0.03	-0.03
26447.00	90.680	330.500	11520.62	14635.89	12158.91	-8148.28	1706077.38	14427526.70	39°43'38.3437"N	80°45'59.2794"W	14636.72	326.172	0.33	-0.03	0.33
26538.00	90.710	330.330	11519.52	14726.70	12238.04	-8193.20	1706032.47	14427605.79	39°43'39.1269"N	80°45'59.8518"W	14727.46	326.198	0.19	0.03	-0.19
26634.00	90.680	330.420	11518.35	14822.51	12321.48	-8240.65	1705985.04	14427689.21	39°43'39.9528"N	80°46'0.4563"W	14823.20	326.225	0.10	-0.03	0.09
26727.00	90.770	330.600	11517.18	14915.30	12402.43	-8286.43	1705939.28	14427770.12	39°43'40.7539"N	80°46'1.0395"W	14915.93	326.252	0.22	0.10	0.19
26821.00	90.710	330.340	11515.96	15009.10	12484.21	-8332.76	1705892.97	14427851.87	39°43'41.5633"N	80°46'1.6297"W	15009.67	326.278	0.28	-0.06	-0.28
26914.00	90.650	330.210	11514.86	15101.92	12564.97	-8378.87	1705846.88	14427932.59	39°43'42.3626"N	80°46'2.2172"W	15102.44	326.303	0.15	-0.06	-0.14
27006.00	90.710	330.330	11513.77	15193.74	12644.85	-8424.49	1705801.28	14428012.45	39°43'43.1533"N	80°46'2.7985"W	15194.22	326.327	0.15	0.07	0.13
27099.00	91.110	330.900	11512.29	15286.52	12725.88	-8470.11	1705755.67	14428093.44	39°43'43.9552"N	80°46'3.3798"W	15286.95	326.353	0.75	0.43	0.61
27192.00	91.110	330.530	11510.49	15379.28	12806.97	-8515.60	1705710.20	14428174.51	39°43'44.7578"N	80°46'3.9592"W	15379.66	326.379	0.40	0.00	-0.40
27285.00	91.050	330.030	11508.73	15472.09	12887.73	-8561.69	1705664.13	14428255.23	39°43'45.5571"N	80°46'4.5465"W	15472.43	326.403	0.54	-0.06	-0.54
27379.00	90.980	329.660	11507.07	15565.94	12968.99	-8608.91	1705616.93	14428336.46	39°43'46.3614"N	80°46'5.1481"W	15566.25	326.424	0.40	-0.07	-0.39
27472.00	91.020	329.710	11505.45	15658.81	13049.26	-8655.84	1705570.01	14428416.70	39°43'47.1559"N	80°46'5.7462"W	15659.08	326.443	0.07	0.04	0.05
27565.00	91.080	330.380	11503.74	15751.64	13129.83	-8702.27	1705523.60	14428497.23	39°43'47.9533"N	80°46'6.3378"W	15751.88	326.464	0.72	0.06	0.72
27658.00	91.050	330.350	11502.01	15844.45	13210.65	-8748.25	1705477.64	14428578.02	39°43'48.7532"N	80°46'6.9236"W	15844.65	326.487	0.05	-0.03	-0.03
27751.00	91.050	330.500	11500.31	15937.24	13291.52	-8794.14	1705431.77	14428658.86	39°43'49.5536"N	80°46'7.5084"W	15937.42	326.510	0.16	0.00	0.16
27844.00	91.080	330.300	11498.58	16030.04	13372.37	-8840.07	1705385.86	14428739.67	39°43'50.3537"N	80°46'8.0936"W	16030.19	326.533	0.22	0.03	-0.22
27937.00	91.080	330.380	11496.83	16122.84	13453.17	-8886.08	1705339.86	14428820.44	39°43'51.1534"N	80°46'8.6798"W	16122.97	326.554	0.09	0.00	0.09
28031.00	91.050	329.990	11495.08	16216.66	13534.71	-8932.81	1705293.15	14428901.95	39°43'51.9605"N	80°46'9.2753"W	16216.77	326.575	0.42	-0.03	-0.41



RECEIVED
Office Of Oil and Gas

OCT 02 2024

Actual Wellpath Report

Elmer N-15 HU AWP Proj: 29166'

Page 14 of 16



WV Department of
Environmental Protection

REFERENCE WELLPATH IDENTIFICATION

Operator	EQT (TUG HILL OPERATING, LLC)	Well	Elmer N-15 HU
Field	Wetzel	API	47-103-03536-0000
Facility	Elmer Pad	Wellbore	Elmer N-15 HU AWB
Slot	Slot 15		

WELLPATH DATA (373 stations) † = interpolated, ‡ = extrapolated station

MD [ft]	Inclination [°]	Azimuth [°]	TVD [ft]	Vert Sect [ft]	North [ft]	East [ft]	Grid East [US ft]	Grid North [US ft]	Latitude	Longitude	Closure Dist [ft]	Closure Dir [°]	DLS [°/100ft]	Build Rate [°/100ft]	Turn Rate [°/100ft]
28124.00	91.080	330.530	11493.35	16309.47	13615.45	-8978.94	1705247.05	14428982.66	39°43'52.7596"N	80°46'9.8630"W	16309.56	326.596	0.58	0.03	0.58
28217.00	91.080	330.440	11491.60	16402.26	13696.36	-9024.75	1705201.26	14429063.54	39°43'53.5604"N	80°46'10.4467"W	16402.33	326.618	0.10	0.00	-0.10
28310.00	91.080	330.580	11489.85	16495.05	13777.30	-9070.52	1705155.50	14429144.45	39°43'54.3615"N	80°46'11.0299"W	16495.10	326.640	0.15	0.00	0.15
28401.00	91.080	330.730	11488.13	16585.83	13856.61	-9115.11	1705110.93	14429223.72	39°43'55.1464"N	80°46'11.5980"W	16585.86	326.662	0.16	0.00	0.16
28494.00	91.110	330.530	11486.35	16678.60	13937.64	-9160.71	1705065.34	14429304.72	39°43'55.9484"N	80°46'12.1790"W	16678.62	326.685	0.22	0.03	-0.22
28588.00	91.050	330.450	11484.58	16772.39	14019.43	-9207.00	1705019.07	14429386.48	39°43'56.7579"N	80°46'12.7689"W	16772.40	326.706	0.11	-0.06	-0.09
28681.00	91.050	330.280	11482.88	16865.19	14100.25	-9252.98	1704973.11	14429467.27	39°43'57.5578"N	80°46'13.3548"W	16865.20	326.726	0.18	0.00	-0.18
28774.00	91.110	330.180	11481.13	16958.00	14180.96	-9299.15	1704926.96	14429547.95	39°43'58.3566"N	80°46'13.9431"W	16958.01	326.745	0.13	0.06	-0.11
28867.00	91.080	330.370	11479.35	17050.81	14261.71	-9345.26	1704880.87	14429628.67	39°43'59.1558"N	80°46'14.5305"W	17050.81	326.764	0.21	-0.03	0.20
28960.00	91.040	330.660	11477.63	17143.60	14342.65	-9391.02	1704835.13	14429709.58	39°43'59.9568"N	80°46'15.1137"W	17143.60	326.785	0.31	-0.04	0.31
29053.00	91.040	330.540	11475.94	17236.38	14423.66	-9436.67	1704789.50	14429790.55	39°44'0.7586"N	80°46'15.6953"W	17236.38	326.805	0.13	0.00	-0.13
29141.00	91.110	330.520	11474.29	17324.17	14500.26	-9479.95	1704746.23	14429867.12	39°44'1.5167"N	80°46'16.2469"W	17324.18	326.824	0.08	0.08	-0.02
29166.00‡	91.110	330.520	11473.80	17349.12	14522.02	-9492.25	1704733.93	14429888.88	39°44'1.7321"N	80°46'16.4036"W	17349.12	326.830	0.00	0.00	0.00

HOLE & CASING SECTIONS - Ref Wellbore: Elmer N-15 HU AWB Ref Wellpath: Elmer N-15 HU AWP Proj: 29166'

String/Diameter	Start MD [ft]	End MD [ft]	Interval [ft]	Start TVD [ft]	End TVD [ft]	Start N/S [ft]	Start E/W [ft]	End N/S [ft]	End E/W [ft]
30in Conductor	33.00	153.00	120.00	33.00	153.00	0.00	0.00	0.08	-0.24
26in Open Hole	153.00	1141.00	988.00	153.00	1140.97	0.08	-0.24	6.24	-1.92
20in Casing Surface	33.00	1141.00	1108.00	33.00	1140.97	0.00	0.00	6.24	-1.92
17.5in Open Hole	1141.00	2963.00	1822.00	1140.97	2962.94	6.24	-1.92	4.22	-0.53
13.375in Casing Intermediate	33.00	2963.00	2930.00	33.00	2962.94	0.00	0.00	4.22	-0.53
12.25in Open Hole	2963.00	10606.00	7643.00	2962.94	10510.29	4.22	-0.53	-639.99	-402.90
9.625in Casing Intermediate	33.00	10606.00	10573.00	33.00	10510.29	0.00	0.00	-639.99	-402.90
8.5in Open Hole	10606.00	29166.00	18560.00	10510.29	11473.80	-639.99	-402.90	14522.02	-9492.25
5.5in Casing Production	33.00	29166.00	29133.00	33.00	11473.80	0.00	0.00	14522.02	-9492.25



RECEIVED
Office Of Oil and Gas

OCT 02 2024

WV Department of
Environmental Protection

Actual Wellpath Report

Elmer N-15 HU AWP Proj: 29166'

Page 15 of 16



REFERENCE WELLPATH IDENTIFICATION

Operator	EQT (TUG HILL OPERATING, LLC)	Well	Elmer N-15 HU
Field	Wetzel	API	47-103-03536-0000
Facility	Elmer Pad	Wellbore	Elmer N-15 HU AWB
Slot	Slot 15		

TARGETS

Name	TVD [ft]	North [ft]	East [ft]	Grid East [US ft]	Grid North [US ft]	Latitude	Longitude	Shape
Elmer N-15 HU BHL Rev-1	11415.00	14513.44	-9505.95	1704720.24	14429880.30	39°44'1.6476"N	80°46'16.5792"W	point
Elmer N-15 HU BHL Rev-0	11435.00	14513.44	-9505.95	1704720.24	14429880.30	39°44'1.6476"N	80°46'16.5792"W	point
Elmer N-15 HU LP Rev-1	11709.00	-92.33	-1023.32	1713199.52	14415280.31	39°41'37.0741"N	80°44'28.5407"W	point
Elmer N-15 HU LP Rev-0	11729.00	-92.36	-1023.29	1713199.54	14415280.28	39°41'37.0738"N	80°44'28.5404"W	point

WELLPATH COMPOSITION - Ref Wellbore: Elmer N-15 HU AWB Ref Wellpath: Elmer N-15 HU AWP Proj: 29166'

Start MD [ft]	End MD [ft]	Positional Uncertainty Model	Log Name/Comment	Wellbore	Survey Date
33.00	1150.00	OWSG MWD rev2 - Standard	01 NZone MWD [OWSG MWD Rev.2+Standard]<26"> (33' - 1150')	Elmer N-15 HU AWB	8/23/2023
1150.00	2977.00	OWSG MWD rev2 - Standard	02 NZone MWD [OWSG MWD Rev.2+Standard]<17-1/2">(1150')(1192'-2977')	Elmer N-15 HU AWB	8/23/2023
2977.00	5065.00	OWSG MWD rev2 - Standard	03 NZone MWD [OWSG MWD Rev.2+Standard]<12-1/4"> (2977')(2996'-5065')	Elmer N-15 HU AWB	8/23/2023
5065.00	10601.98	OWSG MWD rev2 - Standard	04 NZone MWD [OWSG MWD Rev.2+Standard]<12-1/4"> (5065')(5115'-10601.98')	Elmer N-15 HU AWB	8/23/2023
10601.98	10635.00	BH AutoTrak Curve/eXpress (2019) (IFR1, Short spacing)	05 BH Lucida (IFR1,Short)<8-1/2">(10602')(10635')	Elmer N-15 HU AWB	11/15/2023
10635.00	11462.00	OWSG MWD rev2 + IFR1 + Sag + Multi-Station Correction	06 BH Lucida+SQC IFR1+SAG+FDIR <8-1/2">(10635')(10717'-11462')	Elmer N-15 HU AWB	10/27/2023
11462.00	11555.00	BH AutoTrak Curve/eXpress (2019) (IFR1, Short spacing)	07 BH Lucida (IFR1,Short)<8-1/2">(11462')(11555')	Elmer N-15 HU AWB	11/15/2023
11555.00	29166.00	OWSG MWD rev2 + IFR1 + Sag + Multi-Station Correction	08 BH Lucida+SQC IFR1+SAG+FDIR <8-1/2">(11555')(11647'-29141')	Elmer N-15 HU AWB	11/15/2023



RECEIVED
Office Of Oil and Gas

OCT 02 2024

WV Department of
Environmental Protection

Actual Wellpath Report

Elmer N-15 HU AWP Proj: 29166'

Page 16 of 16



REFERENCE WELLPATH IDENTIFICATION

Operator	EQT (TUG HILL OPERATING, LLC)	Well	Elmer N-15 HU
Field	Wetzel	API	47-103-03536-0000
Facility	Elmer Pad	Wellbore	Elmer N-15 HU AWB
Slot	Slot 15		

COMMENTS

Wellpath general comments

API: 47-103-03536-0000

BH Job #: 111941701

Rig: Nabors X08

Duration: 11/8/2023-11/14/2023

- 01_NZone MWD [OWSG MWD Rev.2+Standard]<26"> (184' - 1150')
- 02_NZone MWD [OWSG MWD Rev.2+Standard]<17-1/2">(1150')(1192'-2977')
- 03_NZone MWD [OWSG MWD Rev.2+Standard]<12-1/4"> (2977')(2996'-5065')
- 04_NZone MWD [OWSG MWD Rev.2+Standard]<12-1/4"> (5065')(5115'-10601.98')
- 05_BH Lucida (IFR1,Short)<8-1/2">(10602')(10635')
- 06_BH Lucida+SQC IFR1+SAG+FDIR <8-1/2">(10635')(10717'-11462')
- 07_BH Lucida (IFR1,Short)<8-1/2">(11462')(11555')
- 08_BH Lucida+SQC IFR1+SAG+FDIR <8-1/2">(11555')(11647'-29141')

Landing Pt. @ 12299' MD

Final Survey @ 29141' MD

Projected MD at TD: 29166'

RECEIVED
Office Of Oil and Gas

OCT 02 2024

WV Department of
Environmental Protection