



Actual Wellpath Report

Elmer 13HU AWP Proj: 20155'

Page 1 of 10



REFERENCE WELLPATH IDENTIFICATION

Operator	EQT (TUG HILL OPERATING, LLC)	Well	Elmer N-13HU
Field	Wetzel	API	47-103-03624-0000
Facility	Elmer Pad	Wellbore	Elmer 13HU AWB
Slot	Slot 13		

REPORT SETUP INFORMATION

Projection System	NAD83 / UTM Zone 17 North, US feet	Software System	WellArchitect® 6.0
North Reference	Grid	User	Scurdan
Scale	0.999606	Report Generated	1/23/2024 at 8:01:47 AM
Convergence at slot	0.17° East	Database	WA_MPL_EASTERNUS_Defn

WELLPATH LOCATION

	Local coordinates		Grid coordinates		Geographic coordinates	
	North[ft]	East[ft]	Easting[US ft]	Northing[US ft]	Latitude	Longitude
Slot Location	104.54	47.81	1714255.53	14415418.33	39°41'38.4083"N	80°44'15.0211"W
Facility Reference Pt			1714207.74	14415313.83	39°41'37.3765"N	80°44'15.6366"W
Field Reference Pt			1628437.04	12695896.25	34°58'12.0000"N	81°02'24.0000"W

WELLPATH DATUM

Calculation method	Minimum curvature	Nabors X08 (RKB) to Facility Vertical Datum	1310.00ft
Horizontal Reference Pt	Slot	Nabors X08 (RKB) to Mean Sea Level	1310.00ft
Vertical Reference Pt	Nabors X08 (RKB)	Nabors X08 (RKB) to Ground Level at Slot (Slot 13)	33.00ft
MD Reference Pt	Nabors X08 (RKB)	Section Origin	N 0.00, E 0.00 ft
Field Vertical Reference	Mean Sea Level	Section Azimuth	318.84°

RECEIVED
 Office Of Oil and Gas
 OCT 02 2024
 WV Department of
 Environmental Protection



RECEIVED
Office Of Oil and Gas

OCT 02 2024

WV Department of
Environmental Protection

Actual Wellpath Report

Elmer 13HU AWP Proj: 20155'

Page 2 of 10



REFERENCE WELLPATH IDENTIFICATION

Operator	EQT (TUG HILL OPERATING, LLC)	Well	Elmer N-13HU
Field	Wetzel	API	47-103-03624-0000
Facility	Elmer Pad	Wellbore	Elmer 13HU AWB
Slot	Slot 13		

WELLPATH DATA (210 stations) † = interpolated, ‡ = extrapolated station

MD [ft]	Inclination [°]	Azimuth [°]	TVD [ft]	Vert Sect [ft]	North [ft]	East [ft]	Grid East [US ft]	Grid North [US ft]	Latitude	Longitude	Closure Dist [ft]	Closure Dir [°]	DLS [°/100ft]	Build Rate [°/100ft]	Turn Rate [°/100ft]
0.00	0.000	51.010	0.00	0.00	0.00	0.00	1714255.53	14415418.33	39°41'38.4083"N	80°44'15.0211"W	0.00	0.000	0.00	0.00	0.00
33.00	0.000	51.010	33.00	0.00	0.00	0.00	1714255.53	14415418.33	39°41'38.4083"N	80°44'15.0211"W	0.00	0.000	0.00	0.00	0.00
100.00	0.210	51.010	100.00	0.00	0.08	0.10	1714255.63	14415418.41	39°41'38.4091"N	80°44'15.0198"W	0.12	51.010	0.31	0.31	0.00
200.00	0.150	32.020	200.00	0.03	0.30	0.31	1714255.84	14415418.63	39°41'38.4113"N	80°44'15.0171"W	0.43	45.350	0.08	-0.06	-18.99
300.00	0.180	308.610	300.00	0.22	0.51	0.25	1714255.78	14415418.84	39°41'38.4134"N	80°44'15.0178"W	0.57	26.356	0.22	0.03	-83.41
400.00	0.270	352.460	400.00	0.57	0.84	0.10	1714255.63	14415419.17	39°41'38.4167"N	80°44'15.0197"W	0.85	6.775	0.19	0.09	43.85
500.00	0.220	354.720	500.00	0.92	1.27	0.05	1714255.58	14415419.60	39°41'38.4209"N	80°44'15.0204"W	1.27	2.333	0.05	-0.05	2.26
600.00	0.230	330.050	600.00	1.27	1.63	-0.07	1714255.46	14415419.96	39°41'38.4245"N	80°44'15.0218"W	1.64	357.681	0.10	0.01	-24.67
700.00	0.270	318.720	700.00	1.71	1.98	-0.32	1714255.21	14415420.31	39°41'38.4280"N	80°44'15.0251"W	2.01	350.791	0.06	0.04	-11.33
800.00	0.140	314.550	800.00	2.06	2.25	-0.56	1714254.97	14415420.58	39°41'38.4306"N	80°44'15.0282"W	2.32	345.906	0.13	-0.13	-4.17
900.00	0.260	30.950	899.99	2.26	2.53	-0.53	1714255.00	14415420.86	39°41'38.4333"N	80°44'15.0278"W	2.58	348.057	0.26	0.12	76.40
1000.00	0.130	311.010	999.99	2.44	2.80	-0.50	1714255.03	14415421.13	39°41'38.4360"N	80°44'15.0274"W	2.84	349.793	0.27	-0.13	-79.94
1100.00	0.180	104.240	1099.99	2.42	2.83	-0.44	1714255.09	14415421.16	39°41'38.4363"N	80°44'15.0265"W	2.87	351.231	0.30	0.05	153.23
1200.00	0.250	94.500	1199.99	2.14	2.78	-0.07	1714255.46	14415421.11	39°41'38.4358"N	80°44'15.0218"W	2.78	358.613	0.08	0.07	-9.74
1300.00	0.520	104.730	1299.99	1.60	2.64	0.59	1714256.12	14415420.97	39°41'38.4344"N	80°44'15.0134"W	2.71	12.558	0.28	0.27	10.23
1400.00	0.760	77.030	1399.98	0.91	2.68	1.67	1714257.20	14415421.01	39°41'38.4347"N	80°44'14.9995"W	3.16	32.013	0.38	0.24	-27.70
1500.00	0.790	57.900	1499.98	0.49	3.19	2.90	1714258.43	14415421.52	39°41'38.4398"N	80°44'14.9838"W	4.32	42.289	0.26	0.03	-19.13
1600.00	0.810	49.130	1599.97	0.38	4.02	4.02	1714259.55	14415422.35	39°41'38.4480"N	80°44'14.9694"W	5.69	45.007	0.12	0.02	-8.77
1700.00	1.010	43.910	1699.95	0.45	5.12	5.17	1714260.70	14415423.45	39°41'38.4588"N	80°44'14.9547"W	7.28	45.274	0.22	0.20	-5.22
1800.00	1.020	31.480	1799.94	0.79	6.51	6.24	1714261.77	14415424.84	39°41'38.4725"N	80°44'14.9409"W	9.02	43.793	0.22	0.01	-12.43
1900.00	0.370	328.450	1899.93	1.38	7.55	6.54	1714262.07	14415425.87	39°41'38.4827"N	80°44'14.9371"W	9.99	40.911	0.91	-0.65	-63.03
2000.00	0.610	280.500	1999.93	2.11	7.92	5.85	1714261.38	14415426.25	39°41'38.4864"N	80°44'14.9459"W	9.85	36.443	0.45	0.24	-47.95
2100.00	0.780	316.310	2099.92	3.21	8.51	4.85	1714260.38	14415426.84	39°41'38.4923"N	80°44'14.9586"W	9.80	29.706	0.46	0.17	35.81
2200.00	1.520	327.520	2199.90	5.20	10.12	3.67	1714259.20	14415428.45	39°41'38.5082"N	80°44'14.9737"W	10.77	19.944	0.77	0.74	11.21
2300.00	2.050	329.460	2299.85	8.27	12.78	2.05	1714257.58	14415431.10	39°41'38.5346"N	80°44'14.9943"W	12.94	9.119	0.53	0.53	1.94
2400.00	2.110	335.680	2399.79	11.79	16.00	0.38	1714255.91	14415434.32	39°41'38.5664"N	80°44'15.0155"W	16.00	1.376	0.23	0.06	6.22
2500.00	1.850	348.610	2499.73	14.95	19.26	-0.69	1714254.84	14415437.58	39°41'38.5987"N	80°44'15.0292"W	19.27	357.940	0.52	-0.26	12.93
2600.00	1.170	9.140	2599.69	17.01	21.85	-0.85	1714254.68	14415440.17	39°41'38.6243"N	80°44'15.0311"W	21.86	357.774	0.86	-0.68	20.53
2700.00	0.860	61.970	2699.68	17.49	23.21	-0.02	1714255.51	14415441.53	39°41'38.6377"N	80°44'15.0205"W	23.21	359.939	0.94	-0.31	52.83
2800.00	0.850	82.230	2799.67	16.91	23.66	1.37	1714256.90	14415441.98	39°41'38.6421"N	80°44'15.0026"W	23.70	3.320	0.30	-0.01	20.26



RECEIVED
Office Of Oil and Gas

OCT 02 2024

WV Department of
Environmental Protection

Actual Wellpath Report

Elmer 13HU AWP Proj: 20155'

Page 3 of 10



REFERENCE WELLPATH IDENTIFICATION

Operator	EQT (TUG HILL OPERATING, LLC)	Well	Elmer N-13HU
Field	Wetzel	API	47-103-03624-0000
Facility	Elmer Pad	Wellbore	Elmer 13HU AWB
Slot	Slot 13		

WELLPATH DATA (210 stations)

MD [ft]	Inclination [°]	Azimuth [°]	TVD [ft]	Vert Sect [ft]	North [ft]	East [ft]	Grid East [US ft]	Grid North [US ft]	Latitude	Longitude	Closure Dist [ft]	Closure Dir [°]	DLS [°/100ft]	Build Rate [°/100ft]	Turn Rate [°/100ft]
2900.00	0.800	136.840	2899.66	15.80	23.25	2.59	1714258.11	14415441.57	39°41'38.6381"N	80°44'14.9871"W	23.40	6.344	0.76	-0.05	54.61
3000.00	1.040	154.610	2999.65	14.23	21.92	3.45	1714258.98	14415440.24	39°41'38.6249"N	80°44'14.9761"W	22.19	8.948	0.37	0.24	17.77
3100.00	0.960	145.340	3099.63	12.53	20.41	4.32	1714259.85	14415438.74	39°41'38.6100"N	80°44'14.9651"W	20.87	11.941	0.18	-0.08	-9.27
3200.00	0.790	116.950	3199.62	11.06	19.41	5.41	1714260.94	14415437.74	39°41'38.6000"N	80°44'14.9511"W	20.15	15.568	0.46	-0.17	-28.39
3300.00	0.830	131.330	3299.61	9.70	18.62	6.57	1714262.09	14415436.94	39°41'38.5922"N	80°44'14.9364"W	19.75	19.424	0.21	0.04	14.38
3400.00	0.610	219.600	3399.60	8.89	17.73	6.77	1714262.30	14415436.06	39°41'38.5834"N	80°44'14.9459"W	18.98	20.898	1.02	-0.22	88.27
3500.00	0.750	248.750	3499.60	9.03	17.09	5.82	1714261.35	14415435.41	39°41'38.5770"N	80°44'14.9459"W	18.05	18.816	0.37	0.14	29.15
3600.00	0.640	236.010	3599.59	9.32	16.54	4.75	1714260.28	14415434.86	39°41'38.5716"N	80°44'14.9597"W	17.21	16.023	0.19	-0.11	-12.74
3700.00	1.080	233.360	3699.58	9.47	15.66	3.53	1714259.06	14415433.99	39°41'38.5630"N	80°44'14.9753"W	16.06	12.700	0.44	0.44	-2.65
3800.00	3.120	239.070	3799.51	10.03	13.70	0.44	1714255.97	14415432.03	39°41'38.5437"N	80°44'15.0149"W	13.71	1.834	2.05	2.04	5.71
3900.00	4.380	241.580	3899.29	11.35	10.48	-5.25	1714250.28	14415428.81	39°41'38.5121"N	80°44'15.0879"W	11.73	333.383	1.27	1.26	2.51
4000.00	5.010	242.790	3998.95	13.25	6.67	-12.50	1714243.04	14415425.00	39°41'38.4746"N	80°44'15.1807"W	14.16	298.095	0.64	0.63	1.21
4100.00	6.640	243.920	4098.43	15.80	2.13	-21.57	1714233.97	14415420.46	39°41'38.4300"N	80°44'15.2970"W	21.68	275.644	1.63	1.63	1.13
4200.00	8.400	242.390	4197.57	19.02	-3.80	-33.24	1714222.30	14415414.54	39°41'38.3718"N	80°44'15.4464"W	33.45	263.486	1.77	1.76	-1.53
4300.00	10.390	241.800	4296.22	22.75	-11.44	-47.66	1714207.89	14415406.89	39°41'38.2966"N	80°44'15.6312"W	49.01	256.500	1.99	1.99	-0.59
4400.00	12.470	242.410	4394.23	27.31	-20.70	-65.18	1714190.38	14415397.63	39°41'38.2056"N	80°44'15.8556"W	68.39	252.377	2.08	2.08	0.61
4500.00	13.970	242.850	4491.58	32.77	-31.21	-85.49	1714170.08	14415387.13	39°41'38.1023"N	80°44'16.1158"W	91.01	249.942	1.50	1.50	0.44
4600.00	15.580	246.530	4588.27	39.77	-42.07	-108.55	1714147.02	14415376.28	39°41'37.9957"N	80°44'16.4113"W	116.42	248.815	1.86	1.61	3.68
4700.00	18.520	252.680	4683.88	50.27	-52.15	-136.04	1714119.55	14415366.20	39°41'37.8969"N	80°44'16.7633"W	145.69	249.025	3.45	2.94	6.15
4800.00	22.260	253.610	4777.59	64.63	-62.23	-169.38	1714086.22	14415356.13	39°41'37.7982"N	80°44'17.1902"W	180.45	249.828	3.75	3.74	0.93
4900.00	25.950	252.910	4868.86	81.50	-74.01	-208.48	1714047.13	14415344.35	39°41'37.6830"N	80°44'17.6908"W	221.22	250.456	3.70	3.69	-0.70
5000.00	27.840	256.100	4958.04	101.12	-86.05	-252.06	1714003.56	14415332.32	39°41'37.5652"N	80°44'18.2488"W	266.35	251.152	2.38	1.89	3.19
5100.00	28.120	259.290	5046.36	123.76	-96.04	-297.89	1713957.76	14415322.33	39°41'37.4678"N	80°44'18.8354"W	312.99	252.131	1.52	0.28	3.19
5200.00	27.560	261.050	5134.79	148.03	-104.01	-343.90	1713911.77	14415314.36	39°41'37.3903"N	80°44'19.4243"W	359.28	253.172	0.99	-0.56	1.76
5300.00	27.500	259.950	5223.46	172.29	-111.64	-389.48	1713866.20	14415306.73	39°41'37.3162"N	80°44'20.0078"W	405.17	254.005	0.51	-0.06	-1.10
5400.00	27.350	259.890	5312.23	196.07	-119.70	-434.83	1713820.87	14415298.67	39°41'37.2379"N	80°44'20.5882"W	451.01	254.608	0.15	-0.15	-0.06
5500.00	28.740	258.560	5400.48	219.84	-128.50	-481.01	1713774.71	14415289.88	39°41'37.1522"N	80°44'21.1793"W	497.88	255.042	1.52	1.39	-1.33
5600.00	29.020	257.190	5488.05	243.27	-138.65	-528.23	1713727.51	14415279.73	39°41'37.0533"N	80°44'21.7837"W	546.12	255.293	0.72	0.28	-1.37
5700.00	28.630	257.360	5575.66	266.23	-149.27	-575.26	1713680.50	14415269.12	39°41'36.9497"N	80°44'22.3857"W	594.31	255.453	0.40	-0.39	0.17
5800.00	28.240	258.330	5663.59	289.32	-159.30	-621.81	1713633.97	14415259.09	39°41'36.8519"N	80°44'22.9815"W	641.89	255.630	0.60	-0.39	0.97



RECEIVED
Office Of Oil and Gas

OCT 02 2024

WV Department of
Environmental Protection

Actual Wellpath Report

Elmer 13HU AWP Proj: 20155'

Page 4 of 10



REFERENCE WELLPATH IDENTIFICATION

Operator	EQT (TUG HILL OPERATING, LLC)	Well	Elmer N-13HU
Field	Weizel	API	47-103-03624-0000
Facility	Elmer Pad	Wellbore	Elmer 13HU AWB
Slot	Slot 13		

WELLPATH DATA (210 stations)

MD [ft]	Inclination [°]	Azimuth [°]	TVD [ft]	Vert Sect [ft]	North [ft]	East [ft]	Grid East [US ft]	Grid North [US ft]	Latitude	Longitude	Closure Dist [ft]	Closure Dir [°]	DLS [°/100ft]	Build Rate [°/100ft]	Turn Rate [°/100ft]
5900.00	28.300	258.720	5751.66	312.77	-168.72	-668.22	1713587.57	14415249.67	39°41'36.7601"N	80°44'23.5757"W	689.19	255.829	0.19	0.06	0.39
6000.00	28.450	259.520	5839.65	336.74	-177.69	-714.89	1713540.92	14415240.71	39°41'36.6728"N	80°44'24.1730"W	736.64	256.042	0.41	0.15	0.80
6100.00	28.850	259.590	5927.41	361.22	-186.38	-762.04	1713493.79	14415232.02	39°41'36.5883"N	80°44'24.7765"W	784.50	256.256	0.40	0.40	0.07
6200.00	28.520	259.100	6015.13	385.59	-195.26	-809.21	1713446.64	14415223.15	39°41'36.5019"N	80°44'25.3803"W	832.44	256.434	0.41	-0.33	-0.49
6300.00	28.070	258.440	6103.19	409.24	-204.49	-855.71	1713400.16	14415213.92	39°41'36.4120"N	80°44'25.9754"W	879.80	256.560	0.55	-0.45	-0.66
6400.00	27.310	257.100	6191.73	431.73	-214.32	-901.12	1713354.77	14415204.09	39°41'36.3161"N	80°44'26.5567"W	926.26	256.621	0.98	-0.76	-1.34
6500.00	27.310	257.540	6280.59	453.60	-224.39	-945.88	1713310.02	14415194.03	39°41'36.2179"N	80°44'27.1297"W	972.13	256.654	0.20	0.00	0.44
6600.00	28.260	261.390	6369.06	477.36	-232.89	-991.69	1713264.23	14415185.53	39°41'36.1352"N	80°44'27.7160"W	1018.67	256.784	2.03	0.95	3.85
6700.00	29.050	259.480	6456.82	502.47	-240.87	-1038.97	1713216.97	14415177.56	39°41'36.0577"N	80°44'28.3212"W	1066.53	256.948	1.21	0.79	-1.91
6800.00	28.910	255.620	6544.30	525.74	-251.30	-1086.26	1713169.70	14415167.13	39°41'35.9559"N	80°44'28.9265"W	1114.95	256.974	1.88	-0.14	-3.86
6900.00	26.540	254.630	6632.82	546.35	-263.23	-1131.22	1713124.75	14415155.21	39°41'35.8394"N	80°44'29.5021"W	1161.45	256.901	2.41	-2.37	-0.99
7000.00	25.470	258.830	6722.70	566.82	-273.32	-1173.86	1713082.13	14415145.12	39°41'35.7409"N	80°44'30.0480"W	1205.26	256.893	2.13	-1.07	4.20
7100.00	25.710	262.910	6812.90	589.72	-280.16	-1216.49	1713039.52	14415138.28	39°41'35.6745"N	80°44'30.5935"W	1248.33	257.031	1.78	0.24	4.08
7200.00	26.190	264.890	6902.82	614.86	-284.80	-1259.99	1712996.03	14415133.64	39°41'35.6298"N	80°44'31.1502"W	1291.78	257.263	0.99	0.48	1.98
7300.00	26.470	264.440	6992.44	640.82	-288.93	-1304.16	1712951.89	14415129.52	39°41'35.5903"N	80°44'31.7153"W	1335.78	257.508	0.34	0.28	-0.45
7400.00	26.920	262.340	7081.78	666.29	-294.10	-1348.77	1712907.29	14415124.34	39°41'35.5404"N	80°44'32.2863"W	1380.47	257.699	1.05	0.45	-2.10
7500.00	27.130	260.960	7170.87	690.91	-300.70	-1393.73	1712862.36	14415117.74	39°41'35.4764"N	80°44'32.8616"W	1425.80	257.825	0.66	0.21	-1.38
7600.00	27.160	259.660	7259.85	714.72	-308.38	-1438.70	1712817.40	14415110.07	39°41'35.4018"N	80°44'33.4372"W	1471.38	257.902	0.59	0.03	-1.30
7700.00	26.790	258.050	7348.97	737.42	-317.15	-1483.20	1712772.92	14415101.31	39°41'35.3165"N	80°44'34.0068"W	1516.73	257.930	0.82	-0.37	-1.61
7800.00	26.690	257.120	7438.28	759.05	-326.82	-1527.14	1712728.99	14415091.64	39°41'35.2221"N	80°44'34.5692"W	1561.72	257.920	0.43	-0.10	-0.93
7900.00	26.070	255.570	7527.87	779.58	-337.30	-1570.31	1712685.84	14415081.16	39°41'35.1198"N	80°44'35.1219"W	1606.13	257.877	0.93	-0.62	-1.55
8000.00	25.840	255.020	7617.78	799.08	-348.41	-1612.65	1712643.52	14415070.06	39°41'35.0112"N	80°44'35.6639"W	1649.85	257.809	0.33	-0.23	-0.55
8100.00	26.760	257.080	7707.43	819.35	-359.08	-1655.64	1712600.54	14415059.39	39°41'34.9070"N	80°44'36.2143"W	1694.14	257.763	1.30	0.92	2.06
8200.00	26.400	257.750	7796.86	840.75	-368.83	-1699.31	1712556.89	14415049.65	39°41'34.8118"N	80°44'36.7733"W	1738.88	257.754	0.47	-0.36	0.67
8300.00	26.580	257.410	7886.36	862.19	-378.42	-1742.87	1712513.35	14415040.06	39°41'34.7183"N	80°44'37.3309"W	1783.48	257.750	0.24	0.18	-0.34
8400.00	27.100	257.300	7975.59	883.75	-388.31	-1786.93	1712469.31	14415030.18	39°41'34.6218"N	80°44'37.8948"W	1828.63	257.740	0.52	0.52	-0.11
8500.00	27.170	257.320	8064.58	905.49	-398.33	-1831.42	1712424.83	14415020.16	39°41'34.5241"N	80°44'38.4644"W	1874.24	257.730	0.07	0.07	0.02
8600.00	27.090	257.250	8153.58	927.21	-408.36	-1875.90	1712380.37	14415010.13	39°41'34.4261"N	80°44'39.0338"W	1919.84	257.719	0.09	-0.08	-0.07
8700.00	26.750	256.850	8242.74	948.61	-418.51	-1920.03	1712336.26	14414999.99	39°41'34.3271"N	80°44'39.5986"W	1965.11	257.704	0.39	-0.34	-0.40
8800.00	26.480	255.560	8332.15	969.20	-429.19	-1963.53	1712292.77	14414989.31	39°41'34.2228"N	80°44'40.1555"W	2009.89	257.670	0.64	-0.27	-1.29

OCT 02 2024

WV Department of
Environmental Protection

Actual Wellpath Report

Elmer 13HU AWP Proj: 20155'

Page 5 of 10



REFERENCE WELLPATH IDENTIFICATION

Operator	EQT (TUG HILL OPERATING, LLC)	Well	Elmer N-13HU
Field	Wetzel	API	47-103-03624-0000
Facility	Elmer Pad	Wellbore	Elmer 13HU AWB
Slot	Slot 13		

WELLPATH DATA (210 stations)

MD [ft]	Inclination [°]	Azimuth [°]	TVD [ft]	Vert Sect [ft]	North [ft]	East [ft]	Grid East [US ft]	Grid North [US ft]	Latitude	Longitude	Closure Dist [ft]	Closure Dir [°]	DLS [°/100ft]	Build Rate [°/100ft]	Turn Rate [°/100ft]
8900.00	27.200	256.120	8421.38	989.70	-440.23	-2007.31	1712249.01	14414978.28	39°41'34.1149"N	80°44'40.7160"W	2055.02	257.630	0.76	0.72	0.56
9000.00	27.850	256.470	8510.06	1011.01	-451.18	-2052.21	1712204.13	14414967.33	39°41'34.0080"N	80°44'41.2907"W	2101.22	257.601	0.67	0.65	0.35
9100.00	26.790	256.480	8598.90	1032.30	-461.91	-2096.83	1712159.53	14414956.60	39°41'33.9031"N	80°44'41.8619"W	2147.11	257.577	1.06	-1.06	0.01
9200.00	24.570	256.420	8689.02	1052.38	-472.06	-2138.96	1712117.42	14414946.46	39°41'33.8040"N	80°44'42.4012"W	2190.43	257.555	2.22	-2.22	-0.06
9300.00	23.230	255.940	8780.44	1070.99	-481.73	-2178.30	1712078.09	14414936.79	39°41'33.7095"N	80°44'42.9048"W	2230.93	257.530	1.35	-1.34	-0.48
9400.00	23.590	257.970	8872.21	1089.72	-490.70	-2217.00	1712039.41	14414927.83	39°41'33.6220"N	80°44'43.4002"W	2270.65	257.520	0.88	0.36	2.03
9500.00	24.330	258.740	8963.59	1109.73	-498.89	-2256.77	1711999.65	14414919.64	39°41'33.5422"N	80°44'43.9093"W	2311.26	257.535	0.80	0.74	0.77
9600.00	26.260	260.190	9054.00	1131.51	-506.68	-2298.78	1711957.66	14414911.85	39°41'33.4663"N	80°44'44.4470"W	2353.96	257.570	2.03	1.93	1.45
9700.00	27.950	259.890	9143.02	1155.11	-514.56	-2343.65	1711912.80	14414903.97	39°41'33.3897"N	80°44'45.0213"W	2399.48	257.617	1.70	1.69	-0.30
9800.00	28.610	258.860	9231.08	1179.17	-523.30	-2390.22	1711866.26	14414895.23	39°41'33.3046"N	80°44'45.6173"W	2446.83	257.651	0.82	0.66	-1.03
9900.00	28.880	257.570	9318.76	1202.76	-533.13	-2437.29	1711819.20	14414885.41	39°41'33.2088"N	80°44'46.2198"W	2494.92	257.662	0.68	0.27	-1.29
10000.00	28.710	256.720	9406.39	1225.60	-543.84	-2484.25	1711772.26	14414874.70	39°41'33.1043"N	80°44'46.8209"W	2543.08	257.652	0.44	-0.17	-0.85
10100.00	28.490	255.750	9494.19	1247.62	-555.23	-2530.74	1711725.79	14414863.32	39°41'32.9930"N	80°44'47.4161"W	2590.94	257.626	0.51	-0.22	-0.97
10200.00	28.780	254.150	9581.96	1268.71	-567.68	-2577.02	1711679.53	14414850.88	39°41'32.8713"N	80°44'48.0085"W	2638.80	257.577	0.82	0.29	-1.60
10300.00	28.670	255.790	9669.66	1289.87	-580.14	-2623.43	1711633.14	14414838.42	39°41'32.7494"N	80°44'48.6027"W	2686.81	257.530	0.80	-0.11	1.64
10400.00	27.920	258.590	9757.71	1312.36	-590.66	-2669.64	1711586.95	14414827.90	39°41'32.6467"N	80°44'49.1941"W	2734.20	257.524	1.52	-0.75	2.80
10500.00	26.240	258.130	9846.75	1334.80	-599.84	-2714.22	1711542.38	14414818.73	39°41'32.5573"N	80°44'49.7648"W	2779.71	257.538	1.69	-1.68	-0.46
10600.00	26.020	259.290	9936.53	1356.73	-608.46	-2757.41	1711499.21	14414810.11	39°41'32.4732"N	80°44'50.3176"W	2823.74	257.556	0.56	-0.22	1.16
10700.00	26.560	259.890	10026.18	1379.38	-616.47	-2800.97	1711455.67	14414802.11	39°41'32.3954"N	80°44'50.8752"W	2868.01	257.588	0.60	0.54	0.60
10800.00	27.330	259.520	10115.33	1402.62	-624.57	-2845.55	1711411.10	14414794.01	39°41'32.3166"N	80°44'51.4458"W	2913.29	257.621	0.79	0.77	-0.37
10900.00	26.060	258.940	10204.67	1425.35	-632.95	-2889.69	1711366.99	14414785.63	39°41'32.2349"N	80°44'52.0106"W	2958.20	257.645	1.30	-1.27	-0.58
11000.00	25.080	259.690	10294.87	1447.24	-640.96	-2932.10	1711324.59	14414777.62	39°41'32.1569"N	80°44'52.5534"W	3001.34	257.669	1.03	-0.98	0.75
11100.00	24.890	261.250	10385.51	1469.38	-647.96	-2973.75	1711282.96	14414770.63	39°41'32.0890"N	80°44'53.0865"W	3043.52	257.708	0.69	-0.19	1.56
11200.00	24.940	262.800	10476.21	1492.44	-653.80	-3015.47	1711241.26	14414764.79	39°41'32.0324"N	80°44'53.6204"W	3085.53	257.767	0.65	0.05	1.55
11250.00	25.060	263.500	10521.52	1504.35	-656.32	-3036.44	1711220.29	14414762.27	39°41'32.0080"N	80°44'53.8889"W	3106.57	257.803	0.64	0.24	1.40
11305.00	26.000	263.830	10571.15	1517.89	-658.93	-3060.00	1711196.74	14414759.66	39°41'31.9829"N	80°44'54.1903"W	3130.15	257.848	1.73	1.71	0.60
11379.00	25.640	259.680	10637.77	1535.40	-663.55	-3091.88	1711164.87	14414755.05	39°41'31.9382"N	80°44'54.5983"W	3162.28	257.888	2.49	-0.49	-5.61
11565.00	24.880	249.100	10806.07	1569.60	-684.73	-3168.07	1711088.72	14414733.88	39°41'31.7310"N	80°44'55.5736"W	3241.22	257.804	2.46	-0.41	-5.69
11659.00	25.620	248.580	10891.09	1583.31	-699.20	-3205.46	1711051.34	14414719.41	39°41'31.5889"N	80°44'56.0525"W	3280.83	257.695	0.82	0.79	-0.55
11752.00	25.630	251.430	10974.95	1597.83	-712.95	-3243.25	1711013.57	14414705.66	39°41'31.4541"N	80°44'56.5364"W	3320.68	257.602	1.33	0.01	3.06

OCT 02 2024

WV Department of
Environmental Protection

Actual Wellpath Report

Elmer 13HU AWP Proj: 20155'

Page 6 of 10



REFERENCE WELLPATH IDENTIFICATION

Operator	EQT (TUG HILL OPERATING, LLC)	Well	Elmer N-13HU
Field	Welzel	API	47-103-03624-0000
Facility	Elmer Pad	Wellbore	Elmer 13HU AWB
Slot	Slot 13		

WELLPATH DATA (210 stations)

MD [ft]	Inclination [°]	Azimuth [°]	TVD [ft]	Vert Sect [ft]	North [ft]	East [ft]	Grid East [US ft]	Grid North [US ft]	Latitude	Longitude	Closure Dist [ft]	Closure Dir [°]	DLS [°/100ft]	Build Rate [°/100ft]	Turn Rate [°/100ft]
11850.00	25.660	250.860	11063.29	1613.92	-726.66	-3283.38	1710973.45	14414691.96	39°41'31.3197"N	80°44'57.0503"W	3362.83	257.521	0.25	0.03	-0.58
11943.00	26.170	256.790	11146.95	1631.09	-737.95	-3322.38	1710934.47	14414680.67	39°41'31.2092"N	80°44'57.5495"W	3403.35	257.477	2.84	0.55	6.38
12036.00	29.410	273.830	11229.35	1656.89	-741.12	-3365.21	1710891.65	14414677.51	39°41'31.1791"N	80°44'58.0975"W	3445.85	257.580	9.19	3.48	18.32
12129.00	35.380	286.360	11307.93	1695.83	-731.99	-3413.92	1710842.96	14414686.63	39°41'31.2707"N	80°44'58.7204"W	3491.52	257.898	9.63	6.42	13.47
12222.00	41.040	295.660	11381.03	1746.69	-711.15	-3467.36	1710789.54	14414707.46	39°41'31.4781"N	80°44'59.4033"W	3539.54	258.409	8.66	6.09	10.00
12315.00	47.960	301.170	11447.35	1807.76	-680.00	-3524.52	1710732.40	14414738.59	39°41'31.7875"N	80°45'0.1334"W	3589.52	259.080	8.52	7.44	5.92
12408.00	55.200	306.380	11505.13	1878.07	-639.41	-3584.92	1710672.03	14414779.17	39°41'32.1903"N	80°45'0.9045"W	3641.50	259.887	8.93	7.78	5.60
12501.00	60.310	310.120	11554.74	1955.35	-590.69	-3646.61	1710610.36	14414827.88	39°41'32.6735"N	80°45'1.6920"W	3694.14	260.799	6.46	5.49	4.02
12593.00	67.720	314.360	11595.04	2037.43	-535.08	-3707.71	1710549.29	14414883.46	39°41'33.2248"N	80°45'2.4716"W	3746.12	261.788	9.05	8.05	4.61
12686.00	76.300	320.020	11623.76	2125.73	-470.21	-3767.65	1710489.37	14414948.31	39°41'33.8675"N	80°45'3.2361"W	3796.88	262.886	10.89	9.23	6.09
12779.00	86.050	324.550	11638.01	2217.32	-397.59	-3823.75	1710433.29	14415020.90	39°41'34.5868"N	80°45'3.9512"W	3844.37	264.064	11.53	10.48	4.87
12872.00	91.010	331.140	11640.40	2309.06	-318.94	-3873.18	1710383.88	14415099.51	39°41'35.3653"N	80°45'4.5807"W	3886.29	265.292	8.87	5.33	7.09
12964.00	91.230	330.640	11638.60	2399.02	-238.58	-3917.93	1710339.15	14415179.84	39°41'36.1608"N	80°45'5.1503"W	3925.19	266.515	0.59	0.24	-0.54
13057.00	91.200	330.780	11636.63	2490.01	-157.49	-3963.42	1710293.68	14415260.90	39°41'36.9634"N	80°45'5.7294"W	3966.55	267.725	0.15	-0.03	0.15
13150.00	91.170	330.470	11634.71	2581.03	-76.46	-4009.03	1710248.09	14415341.90	39°41'37.7654"N	80°45'6.3100"W	4009.76	268.907	0.33	-0.03	-0.33
13243.00	91.230	330.710	11632.76	2672.06	4.53	-4054.69	1710202.45	14415422.86	39°41'38.5672"N	80°45'6.8912"W	4054.69	270.064	0.27	0.06	0.26
13335.00	91.530	330.830	11630.55	2762.05	84.80	-4099.60	1710157.55	14415503.09	39°41'39.3616"N	80°45'7.4629"W	4100.48	271.185	0.35	0.33	0.13
13428.00	90.820	330.970	11628.64	2852.98	166.04	-4144.82	1710112.35	14415584.30	39°41'40.1658"N	80°45'8.0385"W	4148.14	272.294	0.78	-0.76	0.15
13521.00	90.980	330.860	11627.18	2943.91	247.30	-4190.02	1710067.17	14415665.53	39°41'40.9701"N	80°45'8.6139"W	4197.31	273.378	0.21	0.17	-0.12
13614.00	90.880	330.450	11625.67	3034.93	328.36	-4235.59	1710021.62	14415746.56	39°41'41.7724"N	80°45'9.1940"W	4248.30	274.433	0.45	-0.11	-0.44
13708.00	90.640	330.680	11624.42	3126.96	410.22	-4281.78	1709975.44	14415828.38	39°41'42.5827"N	80°45'9.7820"W	4301.39	275.473	0.35	-0.26	0.24
13801.00	90.730	330.710	11623.31	3217.97	491.31	-4327.30	1709929.94	14415909.44	39°41'43.3853"N	80°45'10.3614"W	4355.10	276.477	0.10	0.10	0.03
13893.00	90.550	330.290	11622.28	3308.06	571.38	-4372.60	1709884.66	14415989.48	39°41'44.1778"N	80°45'10.9381"W	4409.77	277.445	0.50	-0.20	-0.46
13986.00	90.610	330.750	11621.34	3399.13	652.33	-4418.36	1709838.92	14416070.40	39°41'44.9791"N	80°45'11.5208"W	4466.26	278.399	0.50	0.06	0.49
14079.00	90.760	330.630	11620.23	3490.14	733.42	-4463.89	1709793.41	14416151.46	39°41'45.7818"N	80°45'12.1003"W	4523.74	279.330	0.21	0.16	-0.13
14172.00	90.760	330.720	11619.00	3581.16	814.50	-4509.43	1709747.88	14416232.50	39°41'46.5843"N	80°45'12.6801"W	4582.40	280.238	0.10	0.00	0.10
14265.00	90.670	330.660	11617.83	3672.17	895.58	-4554.95	1709702.38	14416313.56	39°41'47.3869"N	80°45'13.2596"W	4642.16	281.123	0.12	-0.10	-0.06
14358.00	90.910	330.910	11616.55	3763.15	976.75	-4600.34	1709657.01	14416394.69	39°41'48.1902"N	80°45'13.8374"W	4702.89	281.987	0.37	0.26	0.27
14451.00	91.070	330.910	11614.95	3854.08	1058.00	-4645.55	1709611.82	14416475.91	39°41'48.9945"N	80°45'14.4129"W	4764.50	282.830	0.17	0.17	0.00
14544.00	90.790	330.540	11613.44	3945.07	1139.11	-4691.02	1709566.37	14416556.99	39°41'49.7973"N	80°45'14.9918"W	4827.34	283.649	0.50	-0.30	-0.40



RECEIVED
Office Of Oil and Gas

OCT 02 2024

WV Department of
Environmental Protection

Actual Wellpath Report

Elmer 13HU AWP Proj: 20155'

Page 7 of 10



REFERENCE WELLPATH IDENTIFICATION

Operator	EQT (TUG HILL OPERATING, LLC)	Well	Elmer N-13HU
Field	Wetzel	API	47-103-03624-0000
Facility	Elmer Pad	Wellbore	Elmer 13HU AWB
Slot	Slot 13		

WELLPATH DATA (210 stations)

MD [ft]	Inclination [°]	Azimuth [°]	TVD [ft]	Vert Sect [ft]	North [ft]	East [ft]	Grid East [US ft]	Grid North [US ft]	Latitude	Longitude	Closure Dist [ft]	Closure Dir [°]	DLS [°/100ft]	Build Rate [°/100ft]	Turn Rate [°/100ft]
14637.00	90.910	330.220	11612.06	4036.18	1219.95	-4736.98	1709520.43	14416637.80	39°41'50.5975"N	80°45'15.5770"W	4891.55	284.442	0.37	0.13	-0.34
14730.00	90.940	330.740	11610.56	4127.26	1300.87	-4782.80	1709474.63	14416718.68	39°41'51.3984"N	80°45'16.1603"W	4956.55	285.216	0.56	0.03	0.56
14824.00	90.640	330.530	11609.26	4219.26	1382.78	-4828.89	1709428.55	14416800.56	39°41'52.2092"N	80°45'16.7471"W	5022.97	285.979	0.39	-0.32	-0.22
14917.00	90.480	330.430	11608.35	4310.34	1463.71	-4874.71	1709382.75	14416881.46	39°41'53.0102"N	80°45'17.3304"W	5089.72	286.713	0.20	-0.17	-0.11
15011.00	90.640	330.940	11607.43	4402.34	1545.66	-4920.73	1709336.75	14416963.38	39°41'53.8214"N	80°45'17.9163"W	5157.78	287.438	0.57	0.17	0.54
15104.00	90.640	330.740	11606.39	4493.30	1626.87	-4966.04	1709291.45	14417044.56	39°41'54.6252"N	80°45'18.4932"W	5225.73	288.139	0.22	0.00	-0.22
15197.00	90.550	331.050	11605.43	4584.24	1708.12	-5011.28	1709246.24	14417125.78	39°41'55.4294"N	80°45'19.0691"W	5294.39	288.822	0.35	-0.10	0.33
15290.00	90.640	331.130	11604.46	4675.12	1789.53	-5056.23	1709201.30	14417207.15	39°41'56.2351"N	80°45'19.6414"W	5363.57	289.490	0.13	0.10	0.09
15383.00	90.670	330.680	11603.40	4766.06	1870.79	-5101.45	1709156.10	14417288.38	39°41'57.0394"N	80°45'20.2171"W	5433.66	290.139	0.48	0.03	-0.48
15477.00	90.580	330.600	11602.37	4858.07	1952.71	-5147.54	1709110.03	14417370.27	39°41'57.8503"N	80°45'20.8038"W	5505.47	290.774	0.13	-0.10	-0.09
15570.00	90.510	330.920	11601.49	4949.06	2033.86	-5192.96	1709064.62	14417451.38	39°41'58.6534"N	80°45'21.3821"W	5577.04	291.388	0.35	-0.08	0.34
15663.00	90.480	330.590	11600.68	5040.05	2115.00	-5238.39	1709019.21	14417532.49	39°41'59.4566"N	80°45'21.9606"W	5649.25	291.986	0.36	-0.03	-0.35
15756.00	90.820	330.670	11599.63	5131.08	2196.04	-5284.00	1708973.62	14417613.50	39°42'0.2587"N	80°45'22.5413"W	5722.18	292.568	0.38	0.37	0.09
15849.00	90.610	330.990	11598.47	5222.05	2277.24	-5329.33	1708928.31	14417694.67	39°42'1.0624"N	80°45'23.1183"W	5795.48	293.137	0.41	-0.23	0.34
15942.00	90.880	330.930	11597.26	5312.97	2358.54	-5374.47	1708883.19	14417775.94	39°42'1.8671"N	80°45'23.6930"W	5869.21	293.694	0.30	0.29	-0.06
16035.00	90.820	330.740	11595.88	5403.93	2439.74	-5419.78	1708837.89	14417857.11	39°42'2.6708"N	80°45'24.2700"W	5943.60	294.235	0.21	-0.06	-0.20
16128.00	90.540	330.700	11594.78	5494.93	2520.85	-5465.27	1708792.43	14417938.19	39°42'3.4737"N	80°45'24.8490"W	6018.62	294.762	0.30	-0.30	-0.04
16221.00	90.790	330.760	11593.70	5585.93	2601.98	-5510.73	1708746.98	14418019.28	39°42'4.2766"N	80°45'25.4279"W	6094.13	295.275	0.28	0.27	0.06
16314.00	90.570	330.940	11592.59	5676.88	2683.19	-5556.03	1708701.70	14418100.46	39°42'5.0804"N	80°45'26.0046"W	6170.01	295.777	0.31	-0.24	0.19
16407.00	90.760	330.160	11591.51	5767.94	2764.17	-5601.75	1708656.00	14418181.40	39°42'5.8819"N	80°45'26.5868"W	6246.62	296.264	0.86	0.20	-0.84
16500.00	90.910	329.910	11590.16	5859.16	2844.73	-5648.20	1708609.57	14418261.93	39°42'6.6793"N	80°45'27.1782"W	6324.13	296.732	0.31	0.16	-0.27
16593.00	90.820	329.170	11588.75	5950.53	2924.88	-5695.34	1708562.45	14418342.05	39°42'7.4727"N	80°45'27.7786"W	6402.48	297.183	0.80	-0.10	-0.80
16686.00	90.790	328.790	11587.45	6042.07	3004.57	-5743.26	1708514.55	14418421.72	39°42'8.2616"N	80°45'28.3890"W	6481.70	297.616	0.41	-0.03	-0.41
16780.00	90.690	328.590	11586.23	6134.68	3084.88	-5792.10	1708465.72	14418501.99	39°42'9.0565"N	80°45'29.0111"W	6562.39	298.040	0.24	-0.11	-0.21
16873.00	90.940	328.680	11584.91	6226.31	3164.28	-5840.50	1708417.34	14418581.36	39°42'9.8425"N	80°45'29.6276"W	6642.60	298.448	0.29	0.27	0.10
16965.00	90.390	328.780	11583.84	6316.94	3242.91	-5888.25	1708369.61	14418659.96	39°42'10.6209"N	80°45'30.2359"W	6722.20	298.843	0.61	-0.60	0.11
17059.00	90.290	328.930	11583.29	6409.51	3323.36	-5936.87	1708321.01	14418740.37	39°42'11.4172"N	80°45'30.8551"W	6803.76	299.239	0.19	-0.11	0.16
17152.00	90.320	328.770	11582.79	6501.09	3402.95	-5984.98	1708272.92	14418819.93	39°42'12.2051"N	80°45'31.4678"W	6884.77	299.622	0.18	0.03	-0.17
17245.00	90.350	328.440	11582.25	6592.74	3482.33	-6033.42	1708224.49	14418899.28	39°42'12.9909"N	80°45'32.0850"W	6966.26	299.992	0.36	0.03	-0.35
17338.00	90.320	328.670	11581.70	6684.41	3561.67	-6081.94	1708176.00	14418978.59	39°42'13.7763"N	80°45'32.7030"W	7048.08	300.354	0.25	-0.03	0.25



RECEIVED
Office Of Oil and Gas

Actual Wellpath Report

Elmer 13HU AWP Proj: 20155'

Page 8 of 10



OCT 02 2024

WV Department of

REFERENCE WELLPATH IDENTIFICATION

Operator	EQT (TUG HILL OPERATING, LLC)	Well	Elmer N-13HU
Field	Wetzel	API	47-103-03624-0000
Facility	Elmer Pad	Wellbore	Elmer 13HU AWB
Slot	Slot 13		

WELLPATH DATA (210 stations) † = interpolated, ‡ = extrapolated station

MD [ft]	Inclination [°]	Azimuth [°]	TVD [ft]	Vert Sect [ft]	North [ft]	East [ft]	Grid East [US ft]	Grid North [US ft]	Latitude	Longitude	Closure Dist [ft]	Closure Dir [°]	DLS [°/100ft]	Build Rate [°/100ft]	Turn Rate [°/100ft]
17432.00	90.380	328.480	11581.13	6777.05	3641.88	-6130.95	1708127.01	14419058.77	39°42'14.5703"N	80°45'33.3272"W	7131.05	300.711	0.21	0.06	-0.20
17524.00	90.290	328.560	11580.59	6867.74	3720.34	-6178.99	1708078.99	14419137.20	39°42'15.3470"N	80°45'33.9392"W	7212.55	301.052	0.13	-0.10	0.09
17617.00	90.510	328.810	11579.94	6959.37	3799.79	-6227.32	1708030.67	14419216.62	39°42'16.1334"N	80°45'34.5549"W	7295.07	301.391	0.36	0.24	0.27
17710.00	90.290	328.980	11579.29	7050.94	3879.42	-6275.37	1707982.65	14419296.21	39°42'16.9216"N	80°45'35.1669"W	7377.68	301.724	0.30	-0.24	0.18
17803.00	90.350	328.920	11578.77	7142.49	3959.09	-6323.33	1707934.70	14419375.85	39°42'17.7103"N	80°45'35.7779"W	7460.49	302.051	0.09	0.06	-0.06
17896.00	90.350	328.950	11578.20	7234.05	4038.75	-6371.32	1707886.73	14419455.48	39°42'18.4989"N	80°45'36.3892"W	7543.56	302.370	0.03	0.00	0.03
17990.00	90.690	328.750	11577.35	7326.61	4119.20	-6419.94	1707838.13	14419535.90	39°42'19.2951"N	80°45'37.0085"W	7627.81	302.685	0.42	0.36	-0.21
18083.00	90.630	329.070	11576.28	7418.18	4198.83	-6467.97	1707790.12	14419615.50	39°42'20.0834"N	80°45'37.6202"W	7711.34	302.991	0.35	-0.06	0.34
18176.00	90.570	328.710	11575.31	7509.74	4278.45	-6516.01	1707742.09	14419695.09	39°42'20.8716"N	80°45'38.2323"W	7795.10	303.289	0.39	-0.06	-0.39
18269.00	90.690	328.610	11574.28	7601.38	4357.88	-6564.38	1707693.75	14419774.48	39°42'21.6578"N	80°45'38.8484"W	7879.23	303.579	0.17	0.13	-0.11
18363.00	90.870	328.490	11573.00	7694.02	4438.06	-6613.42	1707644.73	14419854.63	39°42'22.4515"N	80°45'39.4731"W	7964.53	303.864	0.23	0.19	-0.13
18456.00	90.660	328.830	11571.76	7785.65	4517.48	-6661.79	1707596.38	14419934.03	39°42'23.2377"N	80°45'40.0893"W	8049.04	304.142	0.43	-0.23	0.37
18549.00	90.780	328.560	11570.59	7877.27	4596.94	-6710.11	1707548.08	14420013.45	39°42'24.0242"N	80°45'40.7048"W	8133.72	304.414	0.32	0.13	-0.29
18643.00	90.630	329.050	11569.44	7969.84	4677.34	-6758.79	1707499.41	14420093.82	39°42'24.8201"N	80°45'41.3250"W	8219.41	304.685	0.55	-0.16	0.52
18735.00	90.780	328.850	11568.31	8060.41	4756.15	-6806.24	1707451.98	14420172.60	39°42'25.6002"N	80°45'41.9294"W	8303.37	304.946	0.27	0.16	-0.22
18827.00	90.690	328.880	11567.13	8151.00	4834.89	-6853.80	1707404.44	14420251.31	39°42'26.3797"N	80°45'42.5353"W	8387.54	305.200	0.10	-0.10	0.03
18921.00	90.530	328.650	11566.12	8243.58	4915.26	-6902.55	1707355.72	14420331.65	39°42'27.1752"N	80°45'43.1563"W	8473.78	305.454	0.30	-0.17	-0.24
19014.00	90.410	328.960	11565.36	8335.18	4994.81	-6950.71	1707307.57	14420411.17	39°42'27.9627"N	80°45'43.7699"W	8559.24	305.701	0.36	-0.13	0.33
19107.00	90.500	328.860	11564.62	8426.74	5074.45	-6998.74	1707259.56	14420490.77	39°42'28.7510"N	80°45'44.3816"W	8644.79	305.944	0.14	0.10	-0.11
19200.00	90.440	328.900	11563.86	8518.31	5154.07	-7046.80	1707211.52	14420570.36	39°42'29.5390"N	80°45'44.9939"W	8730.51	306.182	0.08	-0.06	0.04
19293.00	90.470	328.740	11563.12	8609.90	5233.63	-7094.95	1707163.39	14420649.89	39°42'30.3266"N	80°45'45.6073"W	8816.41	306.415	0.18	0.03	-0.17
19386.00	90.350	328.810	11562.46	8701.51	5313.16	-7143.16	1707115.20	14420729.38	39°42'31.1138"N	80°45'46.2215"W	8902.49	306.642	0.15	-0.13	0.08
19479.00	90.560	329.680	11561.72	8792.97	5393.07	-7190.71	1707067.66	14420809.27	39°42'31.9049"N	80°45'46.8272"W	8988.41	306.870	0.96	0.23	0.94
19572.00	90.470	330.100	11560.88	8884.25	5473.52	-7237.36	1707021.03	14420889.68	39°42'32.7011"N	80°45'47.4215"W	9074.08	307.100	0.46	-0.10	0.45
19665.00	90.350	329.760	11560.22	8975.51	5554.00	-7283.96	1706974.45	14420970.13	39°42'33.4977"N	80°45'48.0150"W	9159.86	307.325	0.39	-0.13	-0.37
19759.00	90.530	329.990	11559.49	9067.77	5635.30	-7331.14	1706927.29	14421051.40	39°42'34.3024"N	80°45'48.6159"W	9246.74	307.549	0.31	0.19	0.24
19852.00	90.690	328.030	11558.50	9159.30	5715.02	-7379.02	1706879.43	14421131.09	39°42'35.0915"N	80°45'49.2258"W	9333.34	307.758	2.11	0.17	-2.11
19946.00	91.050	325.720	11557.08	9252.36	5793.73	-7430.38	1706828.10	14421209.76	39°42'35.8707"N	80°45'49.8803"W	9422.19	307.945	2.49	0.38	-2.46
20039.00	91.080	331.040	11555.35	9344.02	5872.88	-7479.11	1706779.38	14421288.88	39°42'36.6542"N	80°45'50.5012"W	9509.35	308.140	5.72	0.03	5.72
20155.00†	91.080	331.040	11553.16	9457.38	5974.36	-7535.26	1706723.25	14421390.32	39°42'37.6585"N	80°45'51.2164"W	9616.30	308.409	0.00	0.00	0.00

HOLE & CASING SECTIONS - Ref Wellbore: Elmer 13HU AWB Ref Wellpath: Elmer 13HU AWP Proj: 20155'

String/Diameter	Start MD [ft]	End MD [ft]	Interval [ft]	Start TVD [ft]	End TVD [ft]	Start N/S [ft]	Start E/W [ft]	End N/S [ft]	End E/W [ft]
-----------------	---------------	-------------	---------------	----------------	--------------	----------------	----------------	--------------	--------------

HOLE & CASING SECTIONS - Ref Wellbore: Elmer 13HU AWB Ref Wellpath: Elmer 13HU AWP Proj: 20155'

String/Diameter	Start MD [ft]	End MD [ft]	Interval [ft]	Start TVD [ft]	End TVD [ft]	Start N/S [ft]	Start E/W [ft]	End N/S [ft]	End E/W [ft]
30in Conductor	33.00	153.00	120.00	33.00	153.00	0.00	0.00	0.20	0.23
24in Open Hole	153.00	1264.00	1111.00	153.00	1263.99	0.20	0.23	2.71	0.30
18.625in Casing Surface	33.00	1264.00	1231.00	33.00	1263.99	0.00	0.00	2.71	0.30
17.5in Open Hole	1264.00	2705.00	1441.00	1263.99	2704.68	2.71	0.30	23.24	0.04
13.375in Casing Intermediate	33.00	2705.00	2672.00	33.00	2704.68	0.00	0.00	23.24	0.04
12.25in Open Hole	2705.00	11261.00	8556.00	2704.68	10531.48	23.24	0.04	-656.85	-3041.09
9.625in Casing Intermediate	33.00	11261.00	11228.00	33.00	10531.48	0.00	0.00	-656.85	-3041.09
8.5in Open Hole	11261.00	20155.00	8894.00	10531.48	11553.16	-656.85	-3041.09	5974.36	-7535.26
5.5in Casing Production	33.00	20155.00	20122.00	33.00	11553.16	0.00	0.00	5974.36	-7535.26

TARGETS

Name	TVD [ft]	North [ft]	East [ft]	Grid East [US ft]	Grid North [US ft]	Latitude	Longitude	Shape
Elmer N-13HU BHL Rev-1	11505.50	13733.37	-12004.32	1702255.96	14429146.26	39°43'54.4514"N	80°46'48.1577"W	point
	11647.00	-305.60	-3849.54	1710407.52	14415112.85	39°41'35.4966"N	80°45'4.2778"W	point
Elmer N-13HU LP Rev-1								

RECEIVED
Office Of Oil and Gas
OCT 02 2024
WV Department of
Environmental Protection



Actual Wellpath Report

Elmer 13HU AWP Proj: 20155'

Page 9 of 10



REFERENCE WELLPATH IDENTIFICATION

Operator	EQT (TUG HILL OPERATING, LLC)	Well	Elmer N-13HU
Field	Wetzel	API	47-103-03624-0000
Facility	Elmer Pad	Wellbore	Elmer 13HU AWB
Slot	Slot 13		

WELLPATH COMPOSITION - Ref Wellbore: Elmer 13HU AWB Ref Wellpath: Elmer 13HU AWP Proj: 20155'

Start MD [ft]	End MD [ft]	Positional Uncertainty Model	Log Name/Comment	Wellbore	Survey Date
33.00	1100.00	Gyrodata 2015 - CT+WIR+DPIPE	01 Gyrodata Continuous Gyro<24">(100'-1000')	Elmer 13HU AWB	12/20/2023
1100.00	2800.00	OWSG MWD rev2 + HRGM	02 SDI MWD<17-1/2">(1100')(1200'-2800')	Elmer 13HU AWB	12/20/2023
2800.00	11250.00	OWSG MWD rev2 + HRGM	03 SDI MWD<12-1/4">(2800')(2900'-11250')	Elmer 13HU AWB	12/20/2023
11250.00	20155.00	OWSG MWD rev2 + IFR1 + Sag + Multi-Station Correction	04 BH Lucida+SQC IFR1+SAG+FDIR <8-1/2">(11250')(11305'-20039')	Elmer 13HU AWB	12/20/2023

RECEIVED
Office Of Oil and Gas
OCT 02 2024
WV Department of
Environmental Protection



Actual Wellpath Report

Elmer 13HU AWP Proj: 20155'

Page 10 of 10



REFERENCE WELLPATH IDENTIFICATION			
Operator	EQT (TUG HILL OPERATING, LLC)	Well	Elmer N-13HU
Field	Wetzel	API	47-103-03624-0000
Facility	Elmer Pad	Wellbore	Elmer 13HU AWB
Slot	Slot 13		

COMMENTS

Wellpath general comments

API: 47-103-03624-0000
 BH Job #: 112068638
 Rig: Nabors X08
 Duration: 12/27/2023-12/31/2023

- 01_Gyrodata Continuous Gyro<24">(100'-1000')
- 02_SDI MWD<17-1/2">(1100')(1200'-2800')
- 03_SDI MWD<12-1/4">(2800')(2900'-11250')
- 04_BH Lucida+SQC IFR1+SAG+FDIR <8-1/2">(11250')(11305'-20039')

Landing Pt. @ 12872' MD
 Final Survey @ 20039' MD
 Projected MD at TD: 20155'

Office RECEIVED
 Of Oil and Gas
 OCT 02 2024
 WV Department of
 Environmental Protection



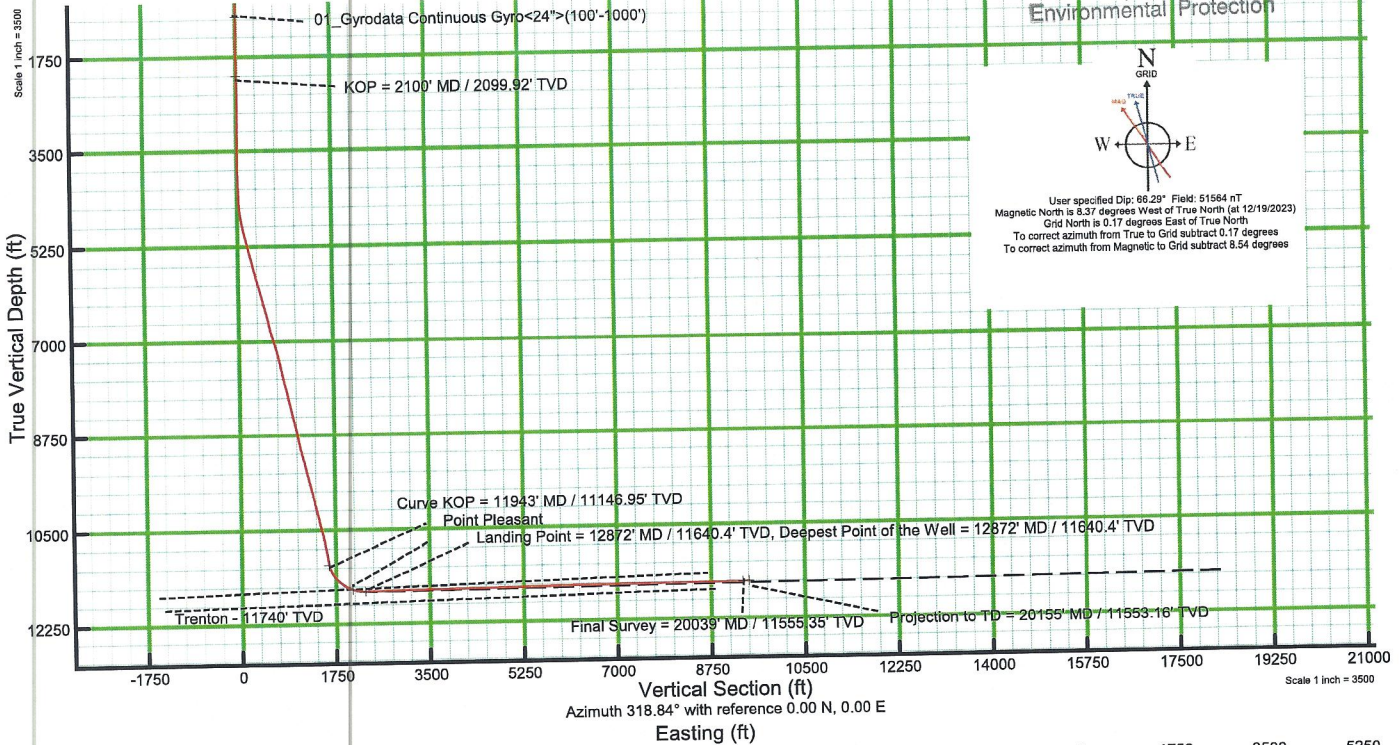
KB Elevation=1310 FT
 Ground Elevation=1277 FT
 All Survey Measurements were taken from KB Elevation

RECEIVED
 Office Of Oil and Gas

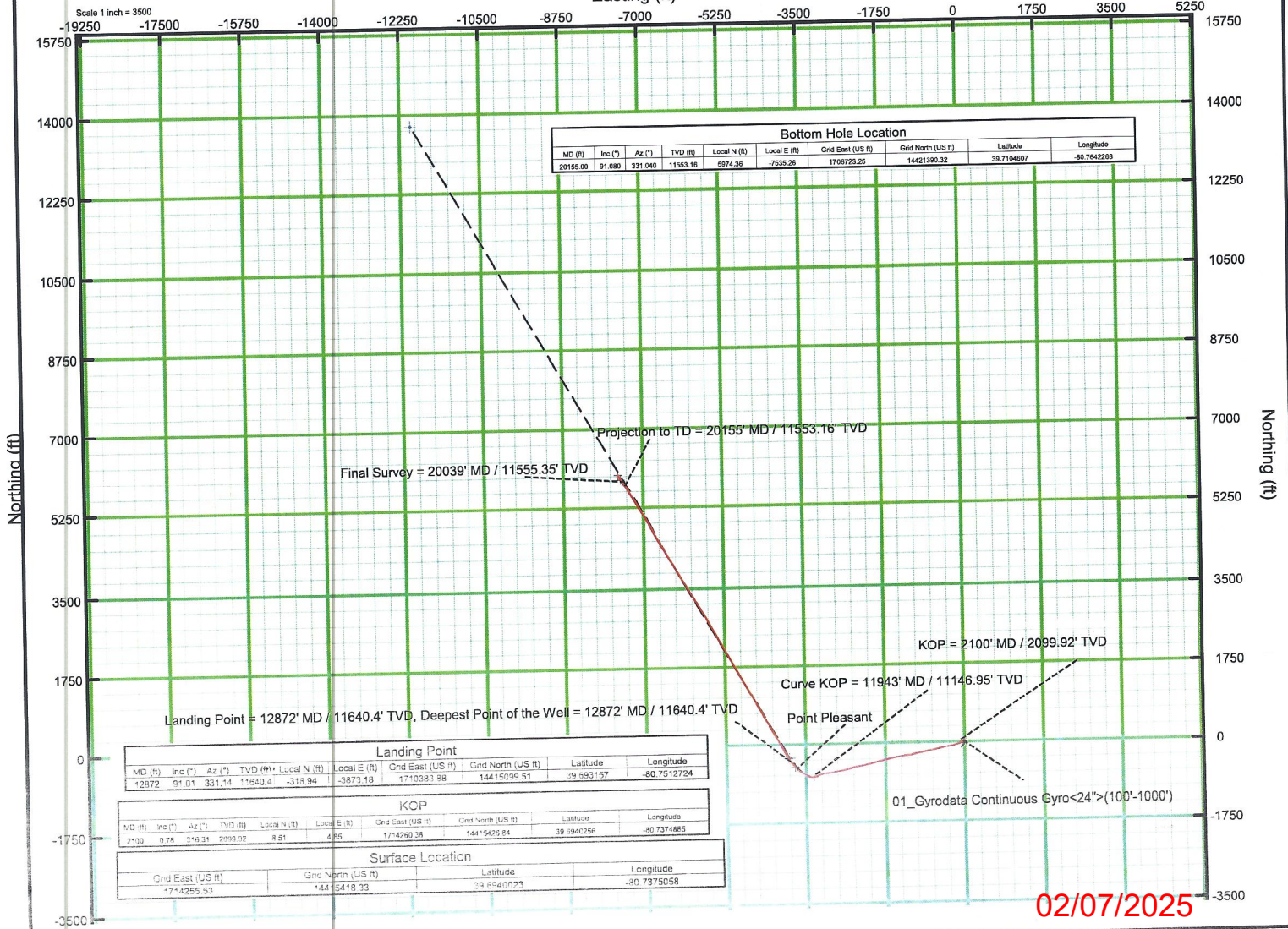
OCT 02 2024



WY Department of
 Environmental Protection



User specified Dip: 66.29° Field: 51564 nT
 Magnetic North is 8.37 degrees West of True North (at 12/19/2023)
 Grid North is 0.17 degrees East of True North
 To correct azimuth from True to Grid subtract 0.17 degrees
 To correct azimuth from Magnetic to Grid subtract 8.54 degrees



Landing Point									
MD (ft)	Inc (")	Az (°)	TVD (ft)	Local N (ft)	Local E (ft)	Grid East (US ft)	Grid North (US ft)	Latitude	Longitude
12872	91.01	331.14	11640.4	-318.94	-3873.18	1710383.88	14415039.51	39.693157	-80.7512724

KOP									
MD (ft)	Inc (")	Az (°)	TVD (ft)	Local N (ft)	Local E (ft)	Grid East (US ft)	Grid North (US ft)	Latitude	Longitude
11943	0.78	216.31	2099.92	8.31	4.85	1714260.38	14415426.84	39.6940756	-80.7374885

Surface Location			
Grid East (US ft)	Grid North (US ft)	Latitude	Longitude
1714265.53	14415419.33	39.6940023	-80.7375058

02/07/2025