



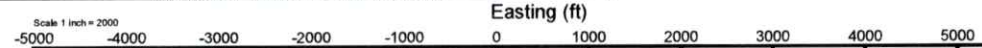
ANTERO RESOURCES CORPORATION



Location: Wetzel County, WV
Field: Wetzel
Facility: Lincoln Pad

Slot: Slot B
Well: Bassett Unit 1H
Wellbore: Bassett Unit 1H PWB

Plot reference wellpath is Bassett Unit 1H PWP Rev-B.0	Grid System: NAD27 UTM Zone 17 North, US feet
True vertical depths are referenced to H&P 317 (RKB)	North Reference: Grid north
Reference wellpath measured depths are referenced to H&P 317 (RKB)	Scale: True distance
H&P 317 (RKB) to Mean Sea Level: 1285.5 feet	Coordinates are in feet referenced to Slot
Mean Sea Level to Ground level (At Slot: Slot B) : -1260 feet	Depths are in feet
Offset wellpath MDs are referenced to each path's default MD datum	Created by: adbray on 2025-01-22, Database: WA_MPL_EASTERNRAJS_Dein



Scale 1 inch = 1500

True Vertical Depth (ft)

Northing (ft)

API: 47-103-03676-0000
BH Job #: 112482503
Rig: H&P 317
Duration: 12/19/2024-12/23/2024



Gyrodata MS Gyro <17-1/2"> (100'-400') : 0.07° Inc, 100.00ft MD, 100.00ft TVD, -0.01ft VS

Gyrodata MS Gyro <12-1/4"> (400')(500'-563') : 0.14° Inc, 500.00ft MD, 500.00ft TVD, -0.26ft VS

APS EM <12-1/4"> (563')(693'-3477') : 1.28° Inc, 693.00ft MD, 692.99ft TVD, -2.01ft VS

Location Information						
Facility Name		Grid East (US ft)	Grid North (US ft)	Latitude	Longitude	
Lincoln Pad		1713678.390	14351001.770	39°31'8.3286"N	80°44'24.7890"W	
Slot	Local N (ft)	Local E (ft)	Grid East (US ft)	Grid North (US ft)	Latitude	Longitude
Slot B	-14.78	2.61	1713681.000	14350987.000	39°31'8.1825"N	80°44'24.7562"W
Comment	Bassett Unit 1H					
H&P 317 (RKB) to Ground level (At Slot: Slot B)						25.5ft
Mean Sea Level to Ground level (At Slot: Slot B)						-1260ft
H&P 317 (RKB) to Mean Sea Level						1285.5ft

APS EM <8-3/4"> (3477')(3605'-6247') : 5.48° Inc, 3605.00ft MD, 3578.68ft TVD, -364.88ft VS

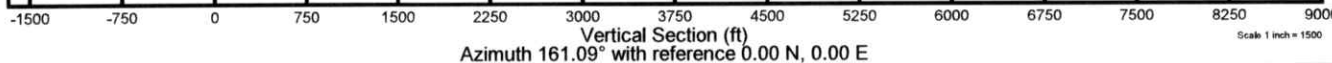
Well Profile Data								
Design Comment	MD (ft)	Inc. (°)	Az (°)	TVD (ft)	Local N (ft)	Local E (ft)	DLS (°/100ft)	VS (ft)
Tie On	3477.00	6.690	315.680	3451.40	295.01	-226.62	0.65	-352.53
Proj. to Bottom	3550.00	6.690	315.680	3523.90	301.09	-232.56	0.00	-360.21
KOP 1	3630.00	6.690	315.680	3603.36	307.76	-239.07	0.00	-368.63
Adj. Inc / Azi	3699.82	8.518	323.463	3672.56	314.82	-244.99	3.00	-377.23
Curve KOP	6314.20	8.518	323.463	6258.10	625.98	-475.54	0.00	-746.31
POE	7339.92	73.926	161.085	7047.00	133.63	-336.37	8.00	-235.43
Landing Pt.	7540.85	90.000	161.085	7075.00	-53.96	-272.09	8.00	-37.13
BHL	15830.13	90.000	161.085	7075.00	-7895.63	2415.00	0.00	8252.15

Well Data			
Slot	Well	Wellbore	Wellpath
Slot B	Bassett Unit 1H	Bassett Unit 1H AWB	Bassett Unit 1H AWP Proj: 15852'
Slot B	Bassett Unit 1H	Bassett Unit 1H PWB	Bassett Unit 1H PWP Rev-B.0

BH AT Curve <8-1/2"> (6247')(6290'-15827') : 6.50° Inc, 6290.00ft MD, 6233.87ft TVD, -743.36ft VS

Marcellus POE: 7354.78' MD : 75.68° Inc, 7354.78ft MD, 7042.88ft TVD, -214.91ft VS

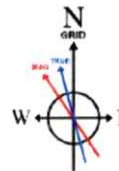
Projected MD at TD: 15852' : 90.49° Inc, 15852.00ft MD, 7097.42ft TVD, 8278.53ft VS



Vertical Section (ft)
Azimuth 161.09° with reference 0.00 N, 0.00 E

Scale 1 inch = 1500

RECEIVED
Office of Oil and Gas
AUG 14 2025
WV Department of
Environmental Protection



User specified (HDGM) Dip: 66.23° Field: 51497 nT
Magnetic North is 7.77 degrees West of True North (at 12/18/2024)
Grid North is 0.17 degrees East of True North
To correct azimuth from True to Grid subtract 0.17 degrees
To correct azimuth from Magnetic to Grid subtract 7.94 degrees

Projected MD at TD: 15852' : 7097.42ft TVD, 7921.64ft S, 2420.47ft E

BH AT Curve <8-1/2"> (6247')(6290'-15827') : 6233.87ft TVD, 625.41ft N, 468.09ft W

APS EM <8-3/4"> (3477')(3605'-6247') : 3578.68ft TVD, 304.88ft N, 235.92ft W

APS EM <12-1/4"> (563')(693'-3477') : 692.99ft TVD, 1.90ft N, 0.66ft W

Gyrodata MS Gyro <12-1/4"> (400')(500'-563') : 500.00ft TVD, 0.35ft N, 0.23ft E

Gyrodata MS Gyro <17-1/2"> (100'-400') : 100.00ft TVD, 0.02ft N, 0.04ft E

Marcellus POE: 7354.78' MD : 7042.88ft TVD, 109.51ft N, 343.47ft W

Slot B

Bassett Unit 1H 50' UJF Hole Line

BHL 87'



Actual Wellpath Report

Bassett Unit 1H AWP Proj: 15852'

Page 1 of 10



REFERENCE WELLPATH IDENTIFICATION

Operator	ANTERO RESOURCES CORPORATION	Well	Bassett Unit 1H
Field	Wetzel	API	47-103-03676-0000
Facility	Lincoln Pad	Wellbore	Bassett Unit 1H AWB
Slot	Slot B		

REPORT SETUP INFORMATION

Projection System	NAD27 / UTM Zone 17 North, US feet	Software System	WellArchitect® 6.0
North Reference	Grid	User	Edsaryar
Scale	0.999606	Report Generated	1/22/2025 at 2:40:46 PM
Convergence at slot	0.17° East	Database	WA_MPL_EASTERNUS_Defn

WELLPATH LOCATION

	Local coordinates		Grid coordinates		Geographic coordinates	
	North[ft]	East[ft]	Easting[US ft]	Northing[US ft]	Latitude	Longitude
Slot Location	-14.78	2.61	1713681.00	14350987.00	39°31'8.1825"N	80°44'24.7562"W
Facility Reference Pt			1713678.39	14351001.77	39°31'8.3286"N	80°44'24.7890"W
Field Reference Pt			0.00	0.00	0°00'0.0000"	85°29'19.3013"W

WELLPATH DATUM

Calculation method	Minimum curvature	H&P 317 (RKB) to Facility Vertical Datum	1285.50ft
Horizontal Reference Pt	Slot	H&P 317 (RKB) to Mean Sea Level	1285.50ft
Vertical Reference Pt	H&P 317 (RKB)	H&P 317 (RKB) to Ground Level at Slot (Slot B)	25.50ft
MD Reference Pt	H&P 317 (RKB)	Section Origin	N 0.00, E 0.00 ft
Field Vertical Reference	Mean Sea Level	Section Azimuth	161.09°

RECEIVED
 Office of Oil and Gas
 WV Department of
 Environmental Protection
 AUG 14 2025



Actual Wellpath Report

Bassett Unit 1H AWP Proj: 15852'

Page 2 of 10



REFERENCE WELLPATH IDENTIFICATION

Operator	ANTERO RESOURCES CORPORATION	Well	Bassett Unit 1H
Field	Wetzel	API	47-103-03676-0000
Facility	Lincoln Pad	Wellbore	Bassett Unit 1H AWB
Slot	Slot B		

WELLPATH DATA (177 stations) † = interpolated, ‡ = extrapolated station

MD [ft]	Inclination [°]	Azimuth [°]	TVD [ft]	Vert Sect [ft]	North [ft]	East [ft]	Grid East [US ft]	Grid North [US ft]	Latitude	Longitude	Closure Dist [ft]	Closure Dir [°]	DLS ["/100ft]	Build Rate ["/100ft]	Turn Rate ["/100ft]	Comments
0.00†	0.000	58.800	0.00	0.00	0.00	0.00	1713681.00	14350987.00	39°31'8.1825"N	80°44'24.7562"W	0.00	0.000	0.00	0.00	0.00	
25.50	0.000	58.800	25.50	0.00	0.00	0.00	1713681.00	14350987.00	39°31'8.1825"N	80°44'24.7562"W	0.00	0.000	0.00	0.00	0.00	
100.00	0.070	58.800	100.00	-0.01	0.02	0.04	1713681.04	14350987.02	39°31'8.1827"N	80°44'24.7557"W	0.05	58.800	0.09	0.09	0.00	Gyrodata MS Gyro <17-1/2"> (100'-400')
200.00	0.030	85.460	200.00	-0.02	0.06	0.12	1713681.12	14350987.06	39°31'8.1830"N	80°44'24.7547"W	0.13	63.964	0.05	-0.04	26.66	
300.00	0.040	1.290	300.00	-0.04	0.09	0.14	1713681.14	14350987.09	39°31'8.1834"N	80°44'24.7544"W	0.17	56.821	0.05	0.01	-84.17	
400.00	0.070	33.210	400.00	-0.11	0.18	0.18	1713681.18	14350987.18	39°31'8.1842"N	80°44'24.7539"W	0.25	44.702	0.04	0.03	31.92	
500.00	0.140	10.690	500.00	-0.26	0.35	0.23	1713681.23	14350987.35	39°31'8.1859"N	80°44'24.7532"W	0.42	33.717	0.08	0.07	-22.52	Gyrodata MS Gyro <12-1/4"> (400')(500'-563')
563.00	0.180	351.060	563.00	-0.42	0.52	0.23	1713681.23	14350987.52	39°31'8.1876"N	80°44'24.7532"W	0.57	23.978	0.11	0.06	-31.16	
693.00	1.280	323.690	692.99	-2.01	1.90	-0.66	1713680.34	14350988.90	39°31'8.2012"N	80°44'24.7646"W	2.01	340.863	0.86	0.85	-21.05	APS EM <12-1/4"> (563')(693'-3477')
788.00	3.130	324.590	787.91	-5.51	4.87	-2.79	1713678.21	14350991.86	39°31'8.2306"N	80°44'24.7916"W	5.61	330.175	1.95	1.95	0.95	
881.00	5.450	326.190	880.65	-12.21	10.61	-6.72	1713674.28	14350997.60	39°31'8.2875"N	80°44'24.8416"W	12.55	327.646	2.50	2.49	1.72	
972.00	7.600	324.510	971.05	-22.16	19.10	-12.62	1713668.39	14351006.09	39°31'8.3716"N	80°44'24.9165"W	22.89	326.547	2.37	2.36	-1.85	
1063.00	8.220	324.920	1061.18	-34.17	29.32	-19.85	1713661.16	14351016.31	39°31'8.4728"N	80°44'25.0084"W	35.41	325.902	0.68	0.68	0.45	
1157.00	7.450	322.710	1154.31	-46.41	39.67	-27.40	1713653.61	14351026.65	39°31'8.5753"N	80°44'25.1045"W	48.21	325.362	0.88	-0.82	-2.35	
1252.00	8.380	331.720	1248.40	-59.08	50.66	-34.42	1713646.60	14351037.64	39°31'8.6842"N	80°44'25.1935"W	61.25	325.812	1.63	0.98	9.48	
1345.00	9.070	324.750	1340.33	-72.80	62.62	-41.86	1713639.16	14351049.59	39°31'8.8025"N	80°44'25.2880"W	75.32	326.240	1.36	0.74	-7.49	
1440.00	8.760	321.820	1434.18	-86.82	74.42	-50.65	1713630.37	14351061.39	39°31'8.9194"N	80°44'25.3998"W	90.02	325.761	0.58	-0.33	-3.08	
1534.00	8.220	320.330	1527.15	-99.86	85.22	-59.37	1713621.66	14351072.19	39°31'9.0264"N	80°44'25.5106"W	103.86	325.139	0.62	-0.57	-1.59	
1628.00	8.150	318.930	1620.20	-112.31	95.42	-68.03	1713612.99	14351082.38	39°31'9.1274"N	80°44'25.6208"W	117.19	324.511	0.22	-0.07	-1.49	
1722.00	7.580	315.810	1713.31	-124.09	104.88	-76.73	1713604.30	14351091.84	39°31'9.2213"N	80°44'25.7315"W	129.96	323.812	0.76	-0.61	-3.32	
1816.00	8.110	317.950	1806.43	-135.79	114.25	-85.49	1713595.54	14351101.21	39°31'9.3141"N	80°44'25.8429"W	142.70	323.193	0.64	0.56	2.28	
1910.00	9.060	326.160	1899.38	-149.04	125.33	-94.06	1713586.98	14351112.28	39°31'9.4238"N	80°44'25.9518"W	156.69	323.112	1.65	1.01	8.73	
2005.00	9.150	327.140	1993.18	-163.60	137.88	-102.32	1713578.72	14351124.83	39°31'9.5481"N	80°44'26.0568"W	171.70	323.422	0.19	0.09	1.03	
2099.00	8.580	324.000	2086.06	-177.56	149.83	-110.50	1713570.55	14351136.77	39°31'9.6665"N	80°44'26.1607"W	186.17	323.592	0.80	-0.61	-3.34	
2194.00	8.540	323.160	2180.00	-191.04	161.21	-118.89	1713562.16	14351148.15	39°31'9.7792"N	80°44'26.2674"W	200.31	323.592	0.14	-0.04	-0.88	
2288.00	8.350	323.780	2272.98	-204.20	172.30	-127.11	1713553.94	14351159.24	39°31'9.8890"N	80°44'26.3718"W	214.12	323.584	0.22	-0.20	0.66	
2382.00	8.130	322.170	2366.01	-217.00	183.06	-135.22	1713545.83	14351169.99	39°31'9.9956"N	80°44'26.4749"W	227.59	323.548	0.34	-0.23	-1.71	
2476.00	8.060	321.880	2459.08	-229.51	193.49	-143.36	1713537.69	14351180.42	39°31'10.0989"N	80°44'26.5785"W	240.82	323.465	0.09	-0.07	-0.31	
2570.00	7.780	320.210	2552.18	-241.68	203.57	-151.50	1713529.56	14351190.49	39°31'10.1987"N	80°44'26.6820"W	253.76	323.342	0.39	-0.30	-1.78	
2665.00	7.120	318.400	2646.38	-253.12	212.91	-159.53	1713521.54	14351199.83	39°31'10.2913"N	80°44'26.7840"W	266.05	323.157	0.74	-0.69	-1.91	

RECEIVED
Office of Oil and Gas
AUG 14 2025
WV Department of
Environmental Protection



Actual Wellpath Report

Bassett Unit 1H AWP Proj: 15852'

Page 3 of 10



REFERENCE WELLPATH IDENTIFICATION			
Operator	ANTERO RESOURCES CORPORATION	Well	Bassett Unit 1H
Field	Wetzel	API	47-103-03676-0000
Facility	Lincoln Pad	Wellbore	Bassett Unit 1H AWB
Slot	Slot B		

WELLPATH DATA (177 stations)																
MD [ft]	Inclination [°]	Azimuth [°]	TVD [ft]	Vert Sect [ft]	North [ft]	East [ft]	Grid East [US ft]	Grid North [US ft]	Latitude	Longitude	Closure Dist [ft]	Closure Dir [°]	DLS [ft/100ft]	Build Rate [ft/100ft]	Turn Rate [ft/100ft]	Comments
2759.00	7.310	320.980	2739.63	-264.11	221.91	-167.16	1713513.91	14351208.83	39°31'10.3805"N	80°44'26.8811"W	277.83	323.010	0.40	0.20	2.74	
2854.00	7.970	320.360	2833.79	-275.95	231.68	-175.17	1713505.90	14351218.59	39°31'10.4772"N	80°44'26.9829"W	290.45	322.908	0.70	0.69	-0.65	
2949.00	7.080	319.820	2927.97	-287.56	241.23	-183.15	1713497.93	14351228.13	39°31'10.5718"N	80°44'27.0844"W	302.87	322.793	0.94	-0.94	-0.57	
3044.00	7.780	322.190	3022.17	-299.10	250.78	-190.87	1713490.21	14351237.68	39°31'10.6664"N	80°44'27.1825"W	315.15	322.726	0.80	0.74	2.49	
3138.00	8.230	324.360	3115.26	-311.56	261.27	-198.69	1713482.39	14351248.17	39°31'10.7704"N	80°44'27.2819"W	328.24	322.749	0.58	0.48	2.31	
3232.00	7.690	321.930	3208.35	-323.95	271.69	-206.49	1713474.60	14351258.59	39°31'10.8736"N	80°44'27.3810"W	341.25	322.765	0.68	-0.57	-2.59	
3327.00	7.410	319.440	3302.53	-335.65	281.35	-214.39	1713466.70	14351268.24	39°31'10.9692"N	80°44'27.4815"W	353.72	322.693	0.45	-0.29	-2.62	
3421.00	6.900	318.190	3395.79	-346.48	290.16	-222.09	1713458.99	14351277.05	39°31'11.0566"N	80°44'27.5795"W	365.41	322.569	0.57	-0.54	-1.33	
3477.00	6.690	315.680	3451.40	-352.53	295.01	-226.62	1713454.47	14351281.89	39°31'11.1045"N	80°44'27.6371"W	372.00	322.470	0.65	-0.38	-4.48	
3605.00	5.480	317.930	3578.68	-364.88	304.88	-235.92	1713445.17	14351291.76	39°31'11.2024"N	80°44'27.7554"W	385.50	322.267	0.96	-0.95	1.76	APS EM <8-3/4"> (3477')(3605-6247')
3699.00	7.020	331.210	3672.12	-374.67	313.24	-241.69	1713439.40	14351300.12	39°31'11.2852"N	80°44'27.8288"W	395.65	322.347	2.24	1.64	14.13	
3794.00	8.510	331.180	3766.25	-387.31	324.49	-247.88	1713433.22	14351311.36	39°31'11.3966"N	80°44'27.9073"W	408.34	322.624	1.57	1.57	-0.03	
3888.00	9.890	321.040	3859.04	-401.75	336.86	-256.31	1713424.79	14351323.73	39°31'11.5191"N	80°44'28.0144"W	423.29	322.734	2.26	1.47	-10.79	
3983.00	10.670	317.480	3952.52	-417.47	349.69	-267.38	1713413.72	14351336.55	39°31'11.6462"N	80°44'28.1553"W	440.20	322.597	1.06	0.82	-3.75	
4078.00	10.220	325.900	4045.95	-433.66	363.15	-278.05	1713403.06	14351350.01	39°31'11.7795"N	80°44'28.2909"W	457.38	322.560	1.67	-0.47	8.86	
4172.00	9.780	326.770	4138.52	-449.45	376.74	-287.10	1713394.01	14351363.59	39°31'11.9140"N	80°44'28.4059"W	473.66	322.690	0.49	-0.47	0.93	
4266.00	9.450	324.280	4231.20	-464.57	389.68	-295.98	1713385.13	14351376.52	39°31'12.0422"N	80°44'28.5187"W	489.34	322.781	0.56	-0.35	-2.65	
4360.00	8.870	320.700	4324.00	-478.75	401.55	-305.08	1713376.04	14351388.39	39°31'12.1598"N	80°44'28.6344"W	504.30	322.774	0.86	-0.62	-3.81	
4455.00	8.050	316.130	4417.97	-491.65	412.02	-314.33	1713366.80	14351398.85	39°31'12.2635"N	80°44'28.7520"W	518.23	322.660	1.12	-0.86	-4.81	
4549.00	7.290	326.450	4511.13	-503.38	421.73	-322.19	1713358.94	14351408.56	39°31'12.3597"N	80°44'28.8519"W	530.72	322.622	1.67	-0.81	10.98	
4644.00	6.990	325.560	4605.39	-514.79	431.52	-328.79	1713352.34	14351418.35	39°31'12.4567"N	80°44'28.9358"W	542.50	322.695	0.34	-0.32	-0.94	
4738.00	7.710	331.830	4698.62	-526.52	441.80	-335.00	1713346.14	14351428.62	39°31'12.5584"N	80°44'29.0147"W	554.44	322.828	1.15	0.77	6.67	
4833.00	9.430	328.170	4792.56	-540.40	454.03	-342.11	1713339.02	14351440.85	39°31'12.6795"N	80°44'29.1050"W	568.49	323.002	1.90	1.81	-3.85	
4927.00	8.850	321.000	4885.37	-554.69	466.19	-350.72	1713330.42	14351453.01	39°31'12.7999"N	80°44'29.2144"W	583.39	323.045	1.36	-0.62	-7.63	
5022.00	8.160	317.740	4979.32	-567.75	476.86	-359.86	1713321.29	14351463.67	39°31'12.9056"N	80°44'29.3306"W	597.40	322.960	0.89	-0.73	-3.43	
5116.00	8.810	325.860	5072.30	-580.82	487.76	-368.38	1713312.76	14351474.56	39°31'13.0136"N	80°44'29.4390"W	611.24	322.938	1.45	0.69	8.64	
5210.00	7.960	322.190	5165.29	-593.92	498.86	-376.41	1713304.74	14351485.66	39°31'13.1235"N	80°44'29.5411"W	624.94	322.964	1.07	-0.90	-3.90	
5305.00	8.470	325.330	5259.32	-606.88	509.81	-384.43	1713296.73	14351496.61	39°31'13.2320"N	80°44'29.6429"W	638.50	322.982	0.71	0.54	3.31	
5399.00	8.050	321.760	5352.34	-619.75	520.67	-392.44	1713288.72	14351507.46	39°31'13.3396"N	80°44'29.7447"W	652.00	322.994	0.71	-0.45	-3.80	
5494.00	9.140	326.080	5446.28	-633.32	532.16	-400.77	1713280.39	14351518.95	39°31'13.4533"N	80°44'29.8506"W	666.19	323.017	1.33	1.15	4.55	

RECEIVED
 Office of Oil and Gas
 AUG 14 2025
 WV Department of
 Environmental Protection



Actual Wellpath Report

Bassett Unit 1H AWP Proj: 15852'

Page 4 of 10



REFERENCE WELLPATH IDENTIFICATION			
Operator	ANTERO RESOURCES CORPORATION	Well	Bassett Unit 1H
Field	Wetzel	API	47-103-03676-0000
Facility	Lincoln Pad	Wellbore	Bassett Unit 1H AWB
Slot	Slot B		

WELLPATH DATA (177 stations) † = interpolated, ‡ = extrapolated station																
MD [ft]	Inclination [°]	Azimuth [°]	TVD [ft]	Vert Sect [ft]	North [ft]	East [ft]	Grid East [US ft]	Grid North [US ft]	Latitude	Longitude	Closure Dist [ft]	Closure Dir [°]	DLS ["/100ft]	Build Rate ["/100ft]	Turn Rate ["/100ft]	Comments
5588.00	9.010	323.450	5539.10	-647.54	544.27	-409.32	1713271.85	14351531.05	39°31'13.5732"N	80°44'29.9592"W	681.00	323.055	0.46	-0.14	-2.80	
5682.00	7.830	319.710	5632.09	-660.52	555.06	-417.84	1713263.33	14351541.84	39°31'13.6802"N	80°44'30.0676"W	694.75	323.028	1.38	-1.26	-3.98	
5776.00	8.800	323.550	5725.10	-673.34	565.73	-426.25	1713254.92	14351552.51	39°31'13.7859"N	80°44'30.1746"W	708.34	323.004	1.19	1.03	4.09	
5870.00	8.460	320.690	5818.03	-686.68	576.86	-434.90	1713246.27	14351563.64	39°31'13.8961"N	80°44'30.2846"W	722.44	322.987	0.58	-0.36	-3.04	
5965.00	8.870	325.370	5911.95	-700.28	588.30	-443.49	1713237.68	14351575.07	39°31'14.0094"N	80°44'30.3938"W	736.74	322.989	0.86	0.43	4.93	
6059.00	7.910	325.120	6004.94	-713.47	599.57	-451.31	1713229.87	14351586.33	39°31'14.1210"N	80°44'30.4931"W	750.44	323.030	1.02	-1.02	-0.27	
6153.00	8.100	327.690	6098.03	-726.13	610.47	-458.55	1713222.63	14351597.23	39°31'14.2290"N	80°44'30.5851"W	763.51	323.088	0.43	0.20	2.73	
6247.00	7.270	327.440	6191.18	-738.35	621.08	-465.29	1713215.89	14351607.84	39°31'14.3340"N	80°44'30.6707"W	776.04	323.161	0.88	-0.88	-0.27	
6290.00	6.500	326.860	6233.87	-743.36	625.41	-468.09	1713213.10	14351612.16	39°31'14.3769"N	80°44'30.7062"W	781.18	323.187	1.80	-1.79	-1.35	BH AT Curve <8-1/2"> (6247')(6290'-15827')
6352.00	4.340	309.870	6295.59	-748.76	629.86	-471.80	1713209.38	14351616.61	39°31'14.4209"N	80°44'30.7535"W	786.97	323.164	4.30	-3.48	-27.40	
6447.00	4.970	211.700	6390.40	-749.23	628.66	-476.73	1713204.46	14351615.41	39°31'14.4092"N	80°44'30.8164"W	788.98	322.826	7.41	0.66	-103.34	
6541.00	12.030	186.570	6483.33	-737.78	615.44	-480.00	1713201.19	14351602.20	39°31'14.2787"N	80°44'30.8586"W	780.49	322.048	8.32	7.51	-26.73	
6635.00	17.880	176.650	6574.13	-715.02	591.28	-480.28	1713200.91	14351578.04	39°31'14.0399"N	80°44'30.8630"W	761.76	320.914	6.77	6.22	-10.55	
6729.00	24.440	169.230	6661.76	-681.82	557.73	-475.79	1713205.40	14351544.51	39°31'13.7082"N	80°44'30.8070"W	733.10	319.533	7.52	6.98	-7.89	
6777.00†	28.327	168.174	6704.75	-660.68	536.82	-471.60	1713209.58	14351523.61	39°31'13.5014"N	80°44'30.7543"W	714.55	318.700	8.16	8.10	-2.20	Sycamore: 6777' MD
6824.00	32.140	167.370	6745.35	-637.18	513.70	-466.58	1713214.60	14351500.49	39°31'13.2727"N	80°44'30.6911"W	693.96	317.752	8.16	8.11	-1.71	
6918.00	39.190	164.710	6821.67	-582.62	460.58	-453.26	1713227.91	14351447.40	39°31'12.7474"N	80°44'30.5231"W	646.21	315.459	7.68	7.50	-2.83	
6933.00†	40.717	164.586	6833.17	-573.00	451.29	-450.71	1713230.46	14351438.11	39°31'12.6555"N	80°44'30.4909"W	637.81	315.037	10.19	10.18	-0.83	Middlesex: 6933' MD
7012.00	48.760	164.040	6889.24	-517.53	397.81	-435.67	1713245.50	14351384.65	39°31'12.1265"N	80°44'30.3009"W	589.97	312.399	10.19	10.18	-0.69	
7091.00†	56.088	163.501	6937.38	-455.03	337.73	-418.17	1713262.99	14351324.60	39°31'11.5323"N	80°44'30.0798"W	537.53	308.926	9.29	9.28	-0.68	Burkett: 7091' MD
7106.00	57.480	163.410	6945.60	-442.49	325.71	-414.60	1713266.56	14351312.58	39°31'11.4133"N	80°44'30.0347"W	527.24	308.153	9.29	9.28	-0.61	
7150.00†	60.442	162.897	6968.29	-404.82	289.63	-403.67	1713277.49	14351276.51	39°31'11.0564"N	80°44'29.8966"W	496.83	305.659	6.81	6.73	-1.17	Tully: 7150' MD
7200.00	63.810	162.350	6991.66	-360.64	247.45	-390.47	1713290.68	14351234.36	39°31'10.6392"N	80°44'29.7297"W	462.28	302.364	6.81	6.74	-1.09	
7295.00	72.880	160.990	7026.68	-272.45	163.74	-362.70	1713318.44	14351150.67	39°31'9.8111"N	80°44'29.3784"W	397.95	294.296	9.64	9.55	-1.43	
7354.78†	75.677	159.965	7042.88	-214.91	109.51	-343.47	1713337.66	14351096.47	39°31'9.2746"N	80°44'29.1350"W	360.51	287.684	4.96	4.68	-1.71	Marcellus POE: 7354.78' MD
7389.00	77.280	159.390	7050.88	-181.65	78.31	-331.92	1713349.21	14351065.28	39°31'8.9659"N	80°44'28.9887"W	341.03	283.275	4.96	4.68	-1.68	
7483.00	83.270	159.510	7066.75	-89.08	-8.40	-299.41	1713381.71	14350978.60	39°31'8.1079"N	80°44'28.5771"W	299.53	268.392	6.37	6.37	0.13	
7577.00	90.400	159.880	7071.94	4.68	-96.37	-266.86	1713414.24	14350890.67	39°31'7.2376"N	80°44'28.1650"W	283.73	250.144	7.60	7.59	0.39	
7671.00	91.420	160.470	7070.44	98.66	-184.79	-234.99	1713446.11	14350802.29	39°31'6.3629"N	80°44'27.7615"W	298.94	231.820	1.25	1.09	0.63	
7765.00	89.880	159.640	7069.38	192.63	-273.14	-202.92	1713478.16	14350713.97	39°31'5.4887"N	80°44'27.3556"W	340.27	216.610	1.86	-1.64	-0.88	

RECEIVED
 Office of Oil and Gas
 AUG 14 2025
 WV Department of
 Environmental Protection



Actual Wellpath Report

Bassett Unit 1H AWP Proj: 15852'

Page 5 of 10



REFERENCE WELLPATH IDENTIFICATION

Operator	ANTERO RESOURCES CORPORATION	Well	Bassett Unit 1H
Field	Wetzel	API	47-103-03676-0000
Facility	Lincoln Pad	Wellbore	Bassett Unit 1H AWB
Slot	Slot B		

WELLPATH DATA (177 stations)

MD [ft]	Inclination [°]	Azimuth [°]	TVD [ft]	Vert Sect [ft]	North [ft]	East [ft]	Grid East [US ft]	Grid North [US ft]	Latitude	Longitude	Closure Dist [ft]	Closure Dir [°]	DLS ["/100ft]	Build Rate ["/100ft]	Turn Rate ["/100ft]	Comments
7859.00	89.820	161.290	7069.62	286.62	-361.73	-171.49	1713509.57	14350625.42	39°31'4.6123"N	80°44'26.9578"W	400.32	205.366	1.76	-0.06	1.76	
7954.00	88.830	160.750	7070.74	381.62	-451.55	-140.60	1713540.46	14350535.63	39°31'3.7236"N	80°44'26.5669"W	472.94	197.295	1.19	-1.04	-0.57	
8048.00	88.860	160.060	7072.64	475.59	-540.09	-109.08	1713571.96	14350447.12	39°31'2.8477"N	80°44'26.1680"W	551.00	191.418	0.73	0.03	-0.73	
8142.00	89.570	159.890	7073.92	569.56	-628.40	-76.90	1713604.13	14350358.85	39°31'1.9740"N	80°44'25.7605"W	633.09	186.976	0.78	0.76	-0.18	
8236.00	89.230	161.360	7074.91	663.55	-717.07	-45.71	1713635.30	14350270.22	39°31'1.0968"N	80°44'25.3659"W	718.52	183.648	1.61	-0.36	1.56	
8330.00	89.350	158.150	7076.07	757.51	-805.24	-13.19	1713667.81	14350182.08	39°31'0.2244"N	80°44'24.9542"W	805.35	180.939	3.42	0.13	-3.41	
8424.00	90.220	160.970	7076.43	851.46	-893.31	19.63	1713700.62	14350094.04	39°30'59.3530"N	80°44'24.5386"W	893.53	178.741	3.14	0.93	3.00	
8519.00	89.510	161.410	7076.65	946.46	-983.24	50.26	1713731.24	14350004.15	39°30'58.4634"N	80°44'24.1511"W	984.52	177.074	0.88	-0.75	0.46	
8613.00	88.800	160.690	7078.04	1040.45	-1072.13	80.78	1713761.75	14349915.29	39°30'57.5840"N	80°44'23.7649"W	1075.17	175.691	1.08	-0.76	-0.77	
8707.00	88.180	159.450	7080.51	1134.40	-1160.47	112.81	1713793.77	14349826.99	39°30'56.7100"N	80°44'23.3595"W	1165.94	174.448	1.47	-0.66	-1.32	
8802.00	90.120	160.010	7081.92	1229.36	-1249.57	145.72	1713826.66	14349737.92	39°30'55.8284"N	80°44'22.9429"W	1258.04	173.348	2.13	2.04	0.59	
8896.00	90.680	160.860	7081.27	1323.35	-1338.14	177.20	1713858.13	14349649.39	39°30'54.9522"N	80°44'22.5446"W	1349.82	172.457	1.08	0.60	0.90	
8990.00	89.690	160.440	7080.96	1417.34	-1426.83	208.34	1713889.26	14349560.73	39°30'54.0747"N	80°44'22.1504"W	1441.96	171.693	1.14	-1.05	-0.45	
9084.00	90.340	160.460	7080.94	1511.34	-1515.41	239.80	1713920.70	14349472.19	39°30'53.1984"N	80°44'21.7524"W	1534.27	171.008	0.69	0.69	0.02	
9179.00	89.350	161.290	7081.20	1606.33	-1605.17	270.92	1713951.81	14349382.47	39°30'52.3104"N	80°44'21.3586"W	1627.87	170.420	1.36	-1.04	0.87	
9273.00	88.250	159.970	7083.16	1700.31	-1693.82	302.09	1713982.97	14349293.85	39°30'51.4333"N	80°44'20.9641"W	1720.55	169.888	1.83	-1.17	-1.40	
9367.00	90.400	159.830	7084.27	1794.27	-1782.09	334.39	1714015.26	14349205.62	39°30'50.5600"N	80°44'20.5553"W	1813.19	169.373	2.29	2.29	-0.15	
9461.00	89.660	160.330	7084.22	1888.26	-1870.46	366.42	1714047.27	14349117.28	39°30'49.6857"N	80°44'20.1499"W	1906.01	168.916	0.95	-0.79	0.53	
9555.00	88.580	160.090	7085.67	1982.23	-1958.90	398.24	1714079.08	14349028.88	39°30'48.8107"N	80°44'19.7472"W	1998.97	168.509	1.18	-1.15	-0.26	
9650.00	90.520	159.880	7086.41	2077.21	-2048.15	430.75	1714111.58	14348939.66	39°30'47.9277"N	80°44'19.3356"W	2092.96	168.123	2.05	2.04	-0.22	
9744.00	89.260	160.140	7086.59	2171.19	-2136.49	462.88	1714143.70	14348851.36	39°30'47.0537"N	80°44'18.9289"W	2186.06	167.775	1.37	-1.34	0.28	
9838.00	88.980	160.110	7088.04	2265.17	-2224.88	494.84	1714175.64	14348763.00	39°30'46.1792"N	80°44'18.5245"W	2279.24	167.461	0.30	-0.30	-0.03	
9932.00	90.620	160.170	7088.36	2359.15	-2313.28	526.77	1714207.56	14348674.63	39°30'45.3045"N	80°44'18.1203"W	2372.50	167.172	1.75	1.74	0.06	
10026.00	89.660	161.870	7088.14	2453.14	-2402.17	557.34	1714238.12	14348585.78	39°30'44.4252"N	80°44'17.7336"W	2465.98	166.938	2.08	-1.02	1.81	
10120.00	89.080	161.470	7089.17	2547.13	-2491.39	586.90	1714267.67	14348496.59	39°30'43.5425"N	80°44'17.3597"W	2559.59	166.744	0.75	-0.62	-0.43	
10215.00	89.910	161.250	7090.01	2642.13	-2581.41	617.26	1714298.02	14348406.62	39°30'42.6520"N	80°44'16.9757"W	2654.18	166.552	0.90	0.87	-0.23	
10309.00	90.000	161.430	7090.08	2736.13	-2670.46	647.34	1714328.08	14348317.59	39°30'41.7709"N	80°44'16.5953"W	2747.80	166.374	0.21	0.10	0.19	
10403.00	89.290	161.200	7090.66	2830.12	-2759.51	677.45	1714358.18	14348228.59	39°30'40.8900"N	80°44'16.2144"W	2841.45	166.207	0.79	-0.76	-0.24	
10497.00	89.260	160.920	7091.85	2924.12	-2848.41	707.96	1714388.68	14348139.72	39°30'40.0105"N	80°44'15.8284"W	2935.07	166.042	0.30	-0.03	-0.30	
10591.00	90.400	160.990	7092.13	3018.11	-2937.26	738.63	1714419.34	14348050.90	39°30'39.1315"N	80°44'15.4404"W	3028.71	165.885	1.22	1.21	0.07	

RECEIVED
 Office of Oil and Gas
 AUG 14 2025
 WV Department of
 Environmental Protection



Actual Wellpath Report

Bassett Unit 1H AWP Proj: 15852'

Page 6 of 10



REFERENCE WELLPATH IDENTIFICATION			
Operator	ANTERO RESOURCES CORPORATION	Well	Bassett Unit 1H
Field	Wetzel	API	47-103-03676-0000
Facility	Lincoln Pad	Wellbore	Bassett Unit 1H AWB
Slot	Slot B		

WELLPATH DATA (177 stations)																
MD [ft]	Inclination [°]	Azimuth [°]	TVD [ft]	Vert Sect [ft]	North [ft]	East [ft]	Grid East [US ft]	Grid North [US ft]	Latitude	Longitude	Closure Dist [ft]	Closure Dir [°]	DLS [°/100ft]	Build Rate [°/100ft]	Turn Rate [°/100ft]	Comments
10686.00	90.650	161.270	7091.26	3113.11	-3027.15	769.36	1714450.05	14347961.04	39°30'38.2422"N	80°44'15.0517"W	3123.39	165.740	0.40	0.26	0.29	
10780.00	90.060	161.800	7090.68	3207.10	-3116.31	799.13	1714479.81	14347871.92	39°30'37.3601"N	80°44'14.6752"W	3217.14	165.617	0.84	-0.63	0.56	
10874.00	89.450	160.800	7091.08	3301.10	-3205.35	829.26	1714509.94	14347782.92	39°30'36.4793"N	80°44'14.2940"W	3310.88	165.495	1.25	-0.65	-1.06	
10969.00	89.290	160.830	7092.12	3396.09	-3295.07	860.48	1714541.14	14347693.24	39°30'35.5917"N	80°44'13.8991"W	3405.57	165.364	0.17	-0.17	0.03	
11063.00	89.850	161.040	7092.83	3490.09	-3383.91	891.18	1714571.83	14347604.43	39°30'34.7128"N	80°44'13.5107"W	3499.29	165.246	0.64	0.60	0.22	
11157.00	89.570	160.280	7093.31	3584.09	-3472.60	922.31	1714602.95	14347515.77	39°30'33.8353"N	80°44'13.1168"W	3593.00	165.126	0.86	-0.30	-0.81	
11251.00	89.630	160.610	7093.96	3678.08	-3561.18	953.78	1714634.40	14347427.23	39°30'32.9589"N	80°44'12.7187"W	3686.69	165.007	0.36	0.06	0.35	
11346.00	89.600	160.560	7094.60	3773.07	-3650.77	985.35	1714665.96	14347337.67	39°30'32.0725"N	80°44'12.3191"W	3781.41	164.896	0.06	-0.03	-0.05	
11440.00	89.630	160.320	7095.23	3867.06	-3739.35	1016.82	1714697.42	14347249.13	39°30'31.1962"N	80°44'11.9209"W	3875.13	164.788	0.26	0.03	-0.26	
11534.00	89.720	160.500	7095.76	3961.06	-3827.90	1048.34	1714728.93	14347160.61	39°30'30.3201"N	80°44'11.5222"W	3968.86	164.684	0.21	0.10	0.19	
11629.00	90.000	160.730	7096.00	4056.05	-3917.52	1079.87	1714760.44	14347071.03	39°30'29.4335"N	80°44'11.1232"W	4063.63	164.589	0.38	0.29	0.24	
11723.00	89.880	160.860	7096.10	4150.05	-4006.29	1110.79	1714791.35	14346982.30	39°30'28.5553"N	80°44'10.7320"W	4157.43	164.503	0.19	-0.13	0.14	
11817.00	89.450	161.990	7096.65	4244.05	-4095.39	1140.74	1714821.28	14346893.24	39°30'27.6738"N	80°44'10.3534"W	4251.29	164.435	1.29	-0.46	1.20	
11912.00	89.720	162.430	7097.33	4339.02	-4185.84	1169.76	1714850.30	14346802.82	39°30'26.7789"N	80°44'9.9864"W	4346.22	164.387	0.54	0.28	0.46	
12006.00	90.150	162.650	7097.44	4432.99	-4275.51	1197.96	1714878.49	14346713.18	39°30'25.8919"N	80°44'9.6300"W	4440.17	164.348	0.51	0.46	0.23	
12100.00	89.720	162.600	7097.55	4526.96	-4365.22	1226.03	1714906.55	14346623.51	39°30'25.0045"N	80°44'9.2752"W	4534.13	164.312	0.46	-0.46	-0.05	
12194.00	89.750	161.680	7097.98	4620.94	-4454.69	1254.86	1714935.37	14346534.08	39°30'24.1194"N	80°44'8.9108"W	4628.06	164.268	0.98	0.03	-0.98	
12289.00	90.830	161.780	7097.50	4715.93	-4544.90	1284.64	1714965.14	14346443.90	39°30'23.2270"N	80°44'8.5342"W	4722.96	164.217	1.14	1.14	0.11	
12383.00	89.880	162.180	7096.92	4809.92	-4634.28	1313.72	1714994.20	14346354.55	39°30'22.3427"N	80°44'8.1666"W	4816.89	164.173	1.10	-1.01	0.43	
12477.00	89.380	162.500	7097.52	4903.89	-4723.85	1342.24	1715022.71	14346265.02	39°30'21.4566"N	80°44'7.8061"W	4910.84	164.138	0.63	-0.53	0.34	
12572.00	88.680	160.100	7099.13	4998.87	-4813.82	1372.69	1715053.15	14346175.09	39°30'20.5666"N	80°44'7.4210"W	5005.71	164.084	2.63	-0.74	-2.53	
12666.00	90.180	161.230	7100.07	5092.86	-4902.51	1403.81	1715084.25	14346086.43	39°30'19.6891"N	80°44'7.0273"W	5099.53	164.021	2.00	1.60	1.20	
12760.00	89.540	161.200	7100.30	5186.86	-4991.50	1434.08	1715114.51	14345997.48	39°30'18.8087"N	80°44'6.6445"W	5193.42	163.970	0.68	-0.68	-0.03	
12855.00	89.570	160.850	7101.04	5281.86	-5081.33	1464.97	1715145.39	14345907.68	39°30'17.9200"N	80°44'6.2538"W	5288.30	163.918	0.37	0.03	-0.37	
12948.00	90.580	162.010	7100.91	5374.85	-5169.49	1494.58	1715174.99	14345819.56	39°30'17.0478"N	80°44'5.8793"W	5381.21	163.875	1.65	1.09	1.25	
13042.00	90.710	161.590	7099.86	5468.84	-5258.78	1523.94	1715204.34	14345730.30	39°30'16.1645"N	80°44'5.5081"W	5475.14	163.839	0.47	0.14	-0.45	
13136.00	89.910	161.580	7099.35	5562.83	-5347.96	1553.63	1715234.02	14345641.15	39°30'15.2822"N	80°44'5.1326"W	5569.07	163.801	0.85	-0.85	-0.01	
13230.00	90.030	162.500	7099.40	5656.82	-5437.38	1582.62	1715262.99	14345551.77	39°30'14.3976"N	80°44'4.7662"W	5663.02	163.772	0.99	0.13	0.98	
13324.00	91.050	162.360	7098.51	5750.79	-5526.99	1610.99	1715291.36	14345462.20	39°30'13.5111"N	80°44'4.4076"W	5756.99	163.750	1.10	1.09	-0.15	
13419.00	89.940	161.750	7097.69	5845.77	-5617.37	1640.26	1715320.61	14345371.86	39°30'12.6171"N	80°44'4.0376"W	5851.94	163.722	1.33	-1.17	-0.64	

RECEIVED
Office of Oil and Gas
AUG 14 2025
WV Department of
Environmental Protection



Actual Wellpath Report

Bassett Unit 1H AWP Proj: 15852'
Page 7 of 10



REFERENCE WELLPATH IDENTIFICATION

Operator	ANTERO RESOURCES CORPORATION	Well	Bassett Unit 1H
Field	Wetzel	API	47-103-03676-0000
Facility	Lincoln Pad	Wellbore	Bassett Unit 1H AWB
Slot	Slot B		

WELLPATH DATA (177 stations) † = interpolated, ‡ = extrapolated station

MD [ft]	Inclination [°]	Azimuth [°]	TVD [ft]	Vert Sect [ft]	North [ft]	East [ft]	Grid East [US ft]	Grid North [US ft]	Latitude	Longitude	Closure Dist [ft]	Closure Dir [°]	DLS [°/100ft]	Build Rate [°/100ft]	Turn Rate [°/100ft]	Comments
13513.00	88.610	161.890	7098.88	5939.75	-5706.66	1669.59	1715349.93	14345282.59	39°30'11.7337"N	80°44'3.6669"W	5945.88	163.692	1.42	-1.41	0.15	
13607.00	89.570	162.220	7100.37	6033.73	-5796.08	1698.54	1715378.87	14345193.22	39°30'10.8491"N	80°44'3.3008"W	6039.83	163.667	1.08	1.02	0.35	
13702.00	89.880	162.640	7100.83	6128.70	-5886.65	1727.22	1715407.54	14345102.68	39°30'9.9532"N	80°44'2.9384"W	6134.81	163.648	0.55	0.33	0.44	
13796.00	89.510	161.480	7101.33	6222.68	-5976.07	1756.17	1715436.48	14345013.29	39°30'9.0685"N	80°44'2.5724"W	6228.77	163.624	1.30	-0.39	-1.23	
13891.00	89.290	162.180	7102.32	6317.67	-6066.33	1785.80	1715466.09	14344923.07	39°30'8.1756"N	80°44'2.1979"W	6323.72	163.597	0.77	-0.23	0.74	
13984.00	89.820	161.940	7103.05	6410.65	-6154.80	1814.44	1715494.72	14344834.63	39°30'7.3003"N	80°44'1.8358"W	6416.68	163.574	0.63	0.57	-0.26	
14078.00	91.630	160.800	7101.86	6504.64	-6243.87	1844.47	1715524.74	14344745.60	39°30'6.4192"N	80°44'1.4561"W	6510.60	163.543	2.28	1.93	-1.21	
14173.00	90.150	160.980	7100.38	6599.62	-6333.62	1875.56	1715555.82	14344655.89	39°30'5.5313"N	80°44'1.0628"W	6605.49	163.504	1.57	-1.56	0.19	
14267.00	90.120	161.650	7100.16	6693.62	-6422.66	1905.68	1715585.92	14344566.88	39°30'4.6503"N	80°44'0.6820"W	6699.42	163.474	0.71	-0.03	0.71	
14362.00	90.250	161.350	7099.85	6788.62	-6512.75	1935.82	1715616.05	14344476.82	39°30'3.7591"N	80°44'0.3009"W	6794.36	163.446	0.34	0.14	-0.32	
14456.00	91.230	161.470	7098.64	6882.61	-6601.84	1965.78	1715646.01	14344387.77	39°30'2.8777"N	80°43'59.9220"W	6888.30	163.418	1.05	1.04	0.13	
14550.00	90.180	161.230	7097.48	6976.60	-6690.90	1995.84	1715676.05	14344298.75	39°30'1.9967"N	80°43'59.5419"W	6982.23	163.391	1.15	-1.12	-0.26	
14644.00	90.060	161.340	7097.29	7070.60	-6779.93	2026.00	1715706.20	14344209.76	39°30'1.1159"N	80°43'59.1605"W	7076.16	163.363	0.17	-0.13	0.12	
14738.00	89.780	161.730	7097.42	7164.59	-6869.09	2055.77	1715735.96	14344120.63	39°30'0.2338"N	80°43'58.7841"W	7170.12	163.339	0.51	-0.30	0.41	
14832.00	89.600	161.400	7097.93	7258.59	-6958.26	2085.50	1715765.67	14344031.49	39°29'59.3516"N	80°43'58.4083"W	7264.07	163.316	0.40	-0.19	-0.35	
14926.00	89.050	160.430	7099.03	7352.58	-7047.09	2116.23	1715796.39	14343942.70	39°29'58.4728"N	80°43'58.0196"W	7357.98	163.285	1.19	-0.59	-1.03	
15020.00	89.940	160.440	7099.86	7446.57	-7135.66	2147.71	1715827.86	14343854.17	39°29'57.5965"N	80°43'57.6214"W	7451.86	163.249	0.95	0.95	0.01	
15115.00	89.080	161.040	7100.67	7541.56	-7225.33	2179.04	1715859.18	14343764.53	39°29'56.7093"N	80°43'57.2251"W	7546.77	163.218	1.10	-0.91	0.63	
15209.00	91.350	160.660	7100.32	7635.56	-7314.13	2209.88	1715890.00	14343675.77	39°29'55.8308"N	80°43'56.8351"W	7640.68	163.188	2.45	2.41	-0.40	
15304.00	90.250	161.200	7098.99	7730.54	-7403.90	2240.91	1715921.03	14343586.03	39°29'54.9426"N	80°43'56.4426"W	7735.60	163.161	1.29	-1.16	0.57	
15398.00	89.970	160.690	7098.81	7824.54	-7492.75	2271.60	1715951.70	14343497.22	39°29'54.0636"N	80°43'56.0545"W	7829.53	163.134	0.62	-0.30	-0.54	
15492.00	90.770	161.200	7098.21	7918.54	-7581.60	2302.29	1715982.38	14343408.40	39°29'53.1846"N	80°43'55.6664"W	7923.46	163.108	1.01	0.89	0.54	
15586.00	89.880	160.770	7097.67	8012.54	-7670.46	2332.91	1716012.99	14343319.57	39°29'52.3054"N	80°43'55.2791"W	8017.39	163.083	1.05	-0.95	-0.46	
15681.00	90.090	161.080	7097.70	8107.54	-7760.25	2363.96	1716044.03	14343229.82	39°29'51.4171"N	80°43'54.8865"W	8112.32	163.058	0.39	0.22	0.33	
15775.00	89.820	160.620	7097.77	8201.54	-7849.05	2394.80	1716074.85	14343141.06	39°29'50.5386"N	80°43'54.4965"W	8206.25	163.033	0.57	-0.29	-0.49	
15827.00	90.490	160.470	7097.63	8253.53	-7898.08	2412.12	1716092.16	14343092.05	39°29'50.0535"N	80°43'54.2774"W	8258.20	163.017	1.32	1.29	-0.29	
15852.00†	90.490	160.470	7097.42	8278.53	-7921.64	2420.47	1716100.52	14343068.50	39°29'49.8204"N	80°43'54.1717"W	8283.18	163.009	0.00	0.00	0.00	Projected MD at TD: 15852'

RECEIVED
 Office of Oil and Gas
 WV Department of
 Environmental Protection
 AUG 14 2025



Actual Wellpath Report

Bassett Unit 1H AWP Proj: 15852'
Page 8 of 10



REFERENCE WELLPATH IDENTIFICATION

Operator	ANTERO RESOURCES CORPORATION	Well	Bassett Unit 1H
Field	Wetzel	API	47-103-03676-0000
Facility	Lincoln Pad	Wellbore	Bassett Unit 1H AWB
Slot	Slot B		

DIRECTIONAL DIFFICULTY INDEX

Directional Difficulty Index @ TD = 6.72		Reference: IADC/SPE 59196	
Values	Wellpath characterized as:	Values	Wellpath characterized as:
< 6.0	Relatively short or simple profiles with low tortuosity	6.4-6.8	Longer with relatively tortuous well paths
< 6.0-6.4	Shorter with high tortuosity or longer with lower tortuosity	> 6.8	Long tortuous profiles, high degree of difficulty

HOLE & CASING SECTIONS - Ref Wellbore: Bassett Unit 1H AWB Ref Wellpath: Bassett Unit 1H AWP Proj: 15852'

String/Diameter	Start MD [ft]	End MD [ft]	Interval [ft]	Start TVD [ft]	End TVD [ft]	Start N/S [ft]	Start E/W [ft]	End N/S [ft]	End E/W [ft]
20in Conductor	25.50	125.50	100.00	25.50	125.50	0.00	0.00	0.04	0.06
17.5in Open Hole	125.50	502.00	376.50	125.50	502.00	0.04	0.06	0.36	0.24
13.375in Casing Surface	25.50	482.00	456.50	25.50	482.00	0.00	0.00	0.31	0.23
12.25in Open Hole	502.00	3550.00	3048.00	502.00	3523.95	0.36	0.24	300.83	-232.19
9.625in Casing Intermediate	25.50	3520.00	3494.50	25.50	3494.13	0.00	0.00	298.50	-229.99
8.75in Open Hole	3550.00	6320.00	2770.00	3523.95	6263.71	300.83	-232.19	627.92	-469.91
8.5in Open Hole	6320.00	15852.00	9532.00	6263.71	7097.42	627.92	-469.91	-7921.64	2420.47
5.5in Casing Production	25.50	15832.00	15806.50	25.50	7097.59	0.00	0.00	-7902.79	2413.79

RECEIVED
Office of Oil and Gas
AUG 14 2025
WV Department of
Environmental Protection



Actual Wellpath Report

Bassett Unit 1H AWP Proj: 15852'

Page 9 of 10



REFERENCE WELLPATH IDENTIFICATION			
Operator	ANTERO RESOURCES CORPORATION	Well	Bassett Unit 1H
Field	Wetzel	API	47-103-03676-0000
Facility	Lincoln Pad	Wellbore	Bassett Unit 1H AWB
Slot	Slot B		

TARGETS								
Name	TVD [ft]	North [ft]	East [ft]	Grid East [US ft]	Grid North [US ft]	Latitude	Longitude	Shape
Bassett Unit 1H POE Rev-3	7047.00	133.63	-336.37	1713344.76	14351120.58	39°31'9.5128"N	80°44'29.0435"W	point
Bassett Unit 1H BHL Rev-3	7075.00	-7895.63	2415.00	1716095.04	14343094.50	39°29'50.0776"N	80°43'54.2406"W	point
Bassett Unit 1H LP Rev-3	7075.00	-53.96	-272.09	1713409.02	14350933.06	39°31'7.6569"N	80°44'28.2301"W	point
Bassett Unit 1H 50' L/R Hard Line	7500.00	-3881.00	1039.31	1714719.90	14347107.54	39°30'29.7956"N	80°44'11.6393"W	rectangle
2D Rectangle 8487.58 x 100.								

WELLPATH COMPOSITION - Ref Wellbore: Bassett Unit 1H AWB Ref Wellpath: Bassett Unit 1H AWP Proj: 15852'					
Start MD [ft]	End MD [ft]	Positional Uncertainty Model	Log Name/Comment	Wellbore	Survey Date
25.50	400.00	Gyrodata 2015 - GC+WIR+DPIPE	01 Gyrodata MS Gyro <17-1/2"> (100'-400')	Bassett Unit 1H AWB	11/30/2024
400.00	563.00	Gyrodata 2015 - GC+WIR+DPIPE	02 Gyrodata MS Gyro <12-1/4"> (400')(500'-563')	Bassett Unit 1H AWB	12/2/2024
563.00	3477.00	BH NaviTrak (2019) (Axial Corr+HRGM)	03 APS EM <12-1/4"> (563')(693'-3477')	Bassett Unit 1H AWB	11/30/2024
3477.00	6247.00	BH NaviTrak (2019) (Axial Corr+HRGM)	04 APS EM <8-3/4"> (3477')(3605'-6247')	Bassett Unit 1H AWB	12/18/2024
6247.00	15852.00	BH AutoTrak Curve/eXpress (2019) (HRGM, Short spacing)	05 BH AT Curve <8-1/2"> (6247')(6290'-15827')	Bassett Unit 1H AWB	12/18/2024

RECEIVED
 Office of Oil and Gas
 WV Department of
 Environmental Protection
 AUG 14 2025



Actual Wellpath Report

Bassett Unit 1H AWP Proj: 15852'
Page 10 of 10



REFERENCE WELLPATH IDENTIFICATION			
Operator	ANTERO RESOURCES CORPORATION	Well	Bassett Unit 1H
Field	Wetzel	API	47-103-03676-0000
Facility	Lincoln Pad	Wellbore	Bassett Unit 1H AWB
Slot	Slot B		

COMMENTS
<p>Wellpath general comments API: 47-103-03676-0000 BH Job #: 112482503 Rig: H&P 317 Duration: 12/19/2024-12/23/2024 Gyrodatta MS Gyro <17-1/2"> (100'-400') Gyrodatta MS Gyro <12-1/4"> (400')(500'-563') APS EM <12-1/4"> (563')(693'-3477') APS EM <8-3/4"> (3477')(3605'-6247') BH AT Curve <8-1/2"> (6247')(6290'-15827') Sycamore: 6777' MD Middlesex: 6933' MD Burkett: 7091' MD Tully: 7150' MD Marcellus POE: 7354.78' MD Projected MD at TD: 15852'</p>

RECEIVED
Office of Oil and Gas
AUG 14 2025
WV Department of
Environmental Protection