



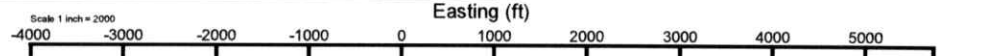
ANTERO RESOURCES CORPORATION

Location: Wetzel County, WV
 Field: Wetzel
 Facility: Lincoln Pad

Slot: Slot C
 Well: Skewed Unit 1H
 Wellbore: Skewed Unit 1H PWB



True vertical depth is Skewed Unit 1H PWB Rev-B.0	Grid System: NAD27 / UTM Zone 17 North, US feet
True vertical depths are referenced to H&P 317 (RKB)	North Reference: Grid north
Reference wellpath measured depths are referenced to H&P 317 (RKB)	Scale: True distance
H&P 317 (RKB) to Mean Sea Level: 1285.5 feet	Coordinates are in feet referenced to Slot
Mean Sea Level to Ground level (At Slot: Slot C): -1260 feet	Depths are in feet
Offset wellpath MDs are referenced to each path's default MD datum	Created by: edesayar on 2025-01-22; Database: WA_MPL_EASTERNUS_Data



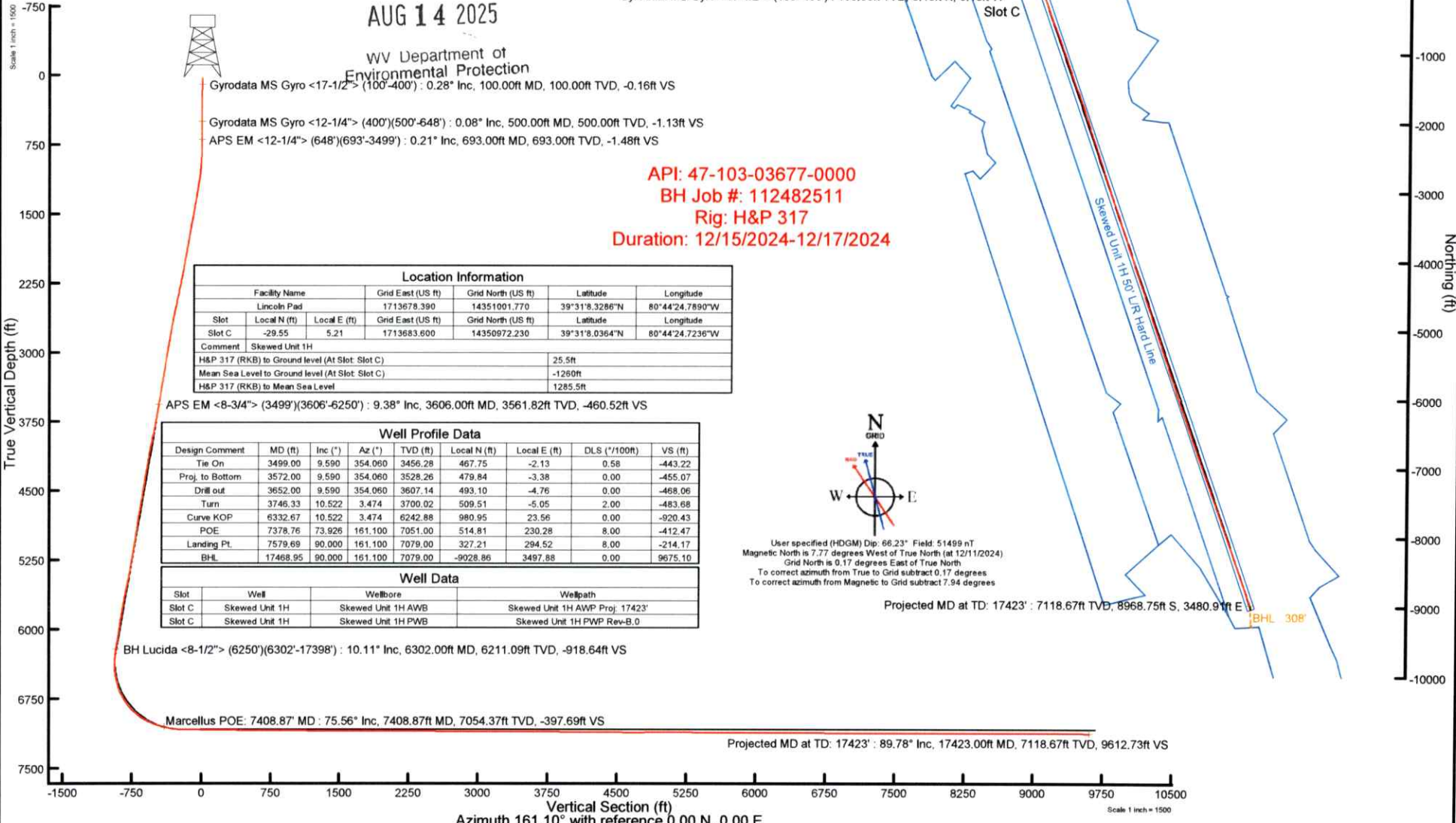
RECEIVED
Office of Oil and Gas

AUG 14 2025

WV Department of
Environmental Protection

BH Lucida <8-1/2"> (6250')(6302'-17398') : 6211.09ft TVD, 980.85ft N, 28.79ft E
 APS EM <8-3/4"> (3499')(3606'-6250') : 3561.82ft TVD, 485.20ft N, 4.57ft W
 Marcellus POE: 7408.87' MD : 7054.37ft TVD, 496.69ft N, 222.96ft E
 APS EM <12-1/4"> (648')(693'-3499') : 693.00ft TVD, 1.35ft N, 0.61ft W
 Gyrodata MS Gyro <12-1/4"> (400')(500'-648') : 500.00ft TVD, 1.03ft N, 0.47ft W
 Gyrodata MS Gyro <17-1/2"> (100'-400') : 100.00ft TVD, 0.13ft N, 0.13ft W
 Slot C

Scale 1 inch = 1000



Gyrodata MS Gyro <17-1/2"> (100'-400') : 0.28° Inc, 100.00ft MD, 100.00ft TVD, -0.16ft VS
 Gyrodata MS Gyro <12-1/4"> (400')(500'-648') : 0.08° Inc, 500.00ft MD, 500.00ft TVD, -1.13ft VS
 APS EM <12-1/4"> (648')(693'-3499') : 0.21° Inc, 693.00ft MD, 693.00ft TVD, -1.48ft VS

API: 47-103-03677-0000
 BH Job #: 112482511
 Rig: H&P 317
 Duration: 12/15/2024-12/17/2024

Location Information					
Facility Name	Grid East (US ft)	Grid North (US ft)	Latitude	Longitude	
Lincoln Pad	1713678.390	14351001.770	39°31'8.3286"N	80°44'24.7890"W	
Slot	Local N (ft)	Local E (ft)	Grid East (US ft)	Grid North (US ft)	Latitude
Slot C	-29.55	5.21	1713683.600	14350972.230	39°31'8.0364"N
Comment	Skewed Unit 1H				
H&P 317 (RKB) to Ground level (At Slot: Slot C)	25.5ft				
Mean Sea Level to Ground level (At Slot: Slot C)	-1260ft				
H&P 317 (RKB) to Mean Sea Level	1285.5ft				

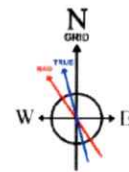
Well Profile Data								
Design Comment	MD (ft)	Inc (°)	Az (°)	TVD (ft)	Local N (ft)	Local E (ft)	DLS (°/100ft)	VS (ft)
Tie On	3499.00	9.590	354.060	3456.28	467.75	-2.13	0.58	-443.22
Proj. to Bottom	3572.00	9.590	354.060	3528.26	479.84	-3.38	0.00	-455.07
Drill out	3652.00	9.590	354.060	3607.14	493.10	-4.76	0.00	-468.06
Turn	3746.33	10.522	3.474	3700.02	509.51	-5.05	2.00	-483.68
Curve KOP	6332.67	10.522	3.474	6242.88	980.95	23.56	0.00	-920.43
POE	7378.76	73.926	161.100	7051.00	514.81	230.28	8.00	-412.47
Landing Pt.	7579.69	90.000	161.100	7079.00	327.21	294.52	8.00	-214.17
BHL	17468.95	90.000	161.100	7079.00	-9028.86	3497.88	0.00	9675.10

Well Data			
Slot	Well	Wellbore	Wellpath
Slot C	Skewed Unit 1H	Skewed Unit 1H AWB	Skewed Unit 1H AWP Proj: 17423'
Slot C	Skewed Unit 1H	Skewed Unit 1H PWB	Skewed Unit 1H PWP Rev-B.0

BH Lucida <8-1/2"> (6250')(6302'-17398') : 10.11° Inc, 6302.00ft MD, 6211.09ft TVD, -918.64ft VS

Marcellus POE: 7408.87' MD : 75.56° Inc, 7408.87ft MD, 7054.37ft TVD, -397.69ft VS

Projected MD at TD: 17423' : 89.78° Inc, 17423.00ft MD, 7118.67ft TVD, 9612.73ft VS



User specified (HDGM) Dip: 66.23° Field: 51499 nT
 Magnetic North is 7.77 degrees West of True North (at 12/11/2024)
 Grid North is 0.17 degrees East of True North
 To correct azimuth from True to Grid subtract 0.17 degrees
 To correct azimuth from Magnetic to Grid subtract 7.94 degrees

Projected MD at TD: 17423' : 7118.67ft TVD, 8968.75ft S, 3480.91ft E

Vertical Section (ft)
 Azimuth 161.10° with reference 0.00 N, 0.00 E

Scale 1 inch = 1500



Actual Wellpath Report

Skewed Unit 1H AWP Proj: 17423'

Page 1 of 11



REFERENCE WELLPATH IDENTIFICATION			
Operator	ANTERO RESOURCES CORPORATION	Well	Skewed Unit 1H
Field	Wetzel	API	47-103-03677-0000
Facility	Lincoln Pad	Wellbore	Skewed Unit 1H AWB
Slot	Slot C		

REPORT SETUP INFORMATION			
Projection System	NAD27 / UTM Zone 17 North, US feet	Software System	WellArchitect® 6.0
North Reference	Grid	User	Edsaryar
Scale	0.999606	Report Generated	1/22/2025 at 11:16:10 AM
Convergence at slot	0.17° East	Database	WA_MPL_EASTERNUS_Defn

WELLPATH LOCATION						
	Local coordinates		Grid coordinates		Geographic coordinates	
	North[ft]	East[ft]	Easting[US ft]	Northing[US ft]	Latitude	Longitude
Slot Location	-29.55	5.21	1713683.60	14350972.23	39°31'8.0364"N	80°44'24.7236"W
Facility Reference Pt			1713678.39	14351001.77	39°31'8.3286"N	80°44'24.7890"W
Field Reference Pt			0.00	0.00	0°00'0.0000"	85°29'19.3013"W

WELLPATH DATUM			
Calculation method	Minimum curvature	H&P 317 (RKB) to Facility Vertical Datum	1285.50ft
Horizontal Reference Pt	Slot	H&P 317 (RKB) to Mean Sea Level	1285.50ft
Vertical Reference Pt	H&P 317 (RKB)	H&P 317 (RKB) to Ground Level at Slot (Slot C)	25.50ft
MD Reference Pt	H&P 317 (RKB)	Section Origin	N 0.00, E 0.00 ft
Field Vertical Reference	Mean Sea Level	Section Azimuth	161.10°

RECEIVED
 Office of Oil and Gas
 AUG 14 2025
 W.V. Department of
 Environmental Protection



Actual Wellpath Report

Skewed Unit 1H AWP Proj: 17423'
Page 2 of 11



REFERENCE WELLPATH IDENTIFICATION			
Operator	ANTERO RESOURCES CORPORATION	Well	Skewed Unit 1H
Field	Wetzel	API	47-103-03677-0000
Facility	Lincoln Pad	Wellbore	Skewed Unit 1H AWB
Slot	Slot C		

WELLPATH DATA (196 stations) † = interpolated, ‡ = extrapolated station																
MD [ft]	Inclination [°]	Azimuth [°]	TVD [ft]	Vert Sect [ft]	North [ft]	East [ft]	Grid East [US ft]	Grid North [US ft]	Latitude	Longitude	Closure Dist [ft]	Closure Dir [°]	DLS ["/100ft]	Build Rate ["/100ft]	Turn Rate ["/100ft]	Comments
0.00†	0.000	314.750	0.00	0.00	0.00	0.00	1713683.60	14350972.23	39°31'8.0364"N	80°44'24.7236"W	0.00	0.000	0.00	0.00	0.00	
25.50	0.000	314.750	25.50	0.00	0.00	0.00	1713683.60	14350972.23	39°31'8.0364"N	80°44'24.7236"W	0.00	0.000	0.00	0.00	0.00	
100.00	0.280	314.750	100.00	-0.16	0.13	-0.13	1713683.47	14350972.36	39°31'8.0376"N	80°44'24.7252"W	0.18	314.750	0.38	0.38	0.00	Gyrodata MS Gyro <17-1/2"> (100'-400')
200.00	0.180	325.400	200.00	-0.53	0.43	-0.39	1713683.21	14350972.66	39°31'8.0406"N	80°44'24.7286"W	0.58	317.612	0.11	-0.10	10.65	
300.00	0.100	349.270	300.00	-0.77	0.64	-0.50	1713683.10	14350972.87	39°31'8.0427"N	80°44'24.7299"W	0.81	322.338	0.10	-0.08	23.87	
400.00	0.140	14.880	400.00	-0.96	0.85	-0.48	1713683.12	14350973.08	39°31'8.0448"N	80°44'24.7297"W	0.98	330.379	0.07	0.04	25.61	
500.00	0.080	342.910	500.00	-1.13	1.03	-0.47	1713683.13	14350973.26	39°31'8.0466"N	80°44'24.7296"W	1.14	335.471	0.08	-0.06	-31.97	Gyrodata MS Gyro <12-1/4"> (400')(500'-648')
600.00	0.130	315.940	600.00	-1.30	1.18	-0.57	1713683.03	14350973.41	39°31'8.0480"N	80°44'24.7308"W	1.31	334.209	0.07	0.05	-26.97	
648.00	0.140	321.160	648.00	-1.41	1.27	-0.65	1713682.95	14350973.50	39°31'8.0489"N	80°44'24.7318"W	1.42	332.987	0.03	0.02	10.87	
693.00	0.210	56.550	693.00	-1.48	1.35	-0.61	1713682.99	14350973.58	39°31'8.0498"N	80°44'24.7313"W	1.49	335.713	0.58	0.16	211.98	APS EM <12-1/4"> (648')(693'-3499')
788.00	1.120	6.130	787.99	-2.36	2.37	-0.37	1713683.23	14350974.60	39°31'8.0598"N	80°44'24.7282"W	2.40	351.216	1.05	0.96	-53.07	
881.00	2.750	355.830	880.93	-5.35	5.50	-0.43	1713683.17	14350977.73	39°31'8.0908"N	80°44'24.7289"W	5.52	355.511	1.79	1.75	-11.08	
972.00	4.810	359.220	971.73	-11.08	11.50	-0.64	1713682.96	14350983.72	39°31'8.1500"N	80°44'24.7314"W	11.51	356.800	2.28	2.26	3.73	
1063.00	6.740	358.400	1062.27	-19.81	20.65	-0.84	1713682.76	14350992.87	39°31'8.2405"N	80°44'24.7336"W	20.67	357.660	2.12	2.12	-0.90	
1157.00	8.300	355.610	1155.45	-31.64	32.93	-1.52	1713682.08	14351005.15	39°31'8.3618"N	80°44'24.7417"W	32.96	357.362	1.70	1.66	-2.97	
1252.00	10.140	359.200	1249.22	-46.23	48.13	-2.16	1713681.44	14351020.34	39°31'8.5121"N	80°44'24.7494"W	48.18	357.432	2.03	1.94	3.78	
1345.00	10.110	358.270	1340.78	-61.81	64.47	-2.52	1713681.08	14351036.68	39°31'8.6736"N	80°44'24.7534"W	64.52	357.762	0.18	-0.03	-1.00	
1440.00	10.170	355.070	1434.29	-77.92	81.16	-3.49	1713680.11	14351053.36	39°31'8.8386"N	80°44'24.7652"W	81.24	357.536	0.60	0.06	-3.37	
1534.00	10.560	356.790	1526.76	-94.26	98.03	-4.69	1713678.91	14351070.22	39°31'9.0054"N	80°44'24.7798"W	98.14	357.262	0.53	0.41	1.83	
1628.00	10.470	357.240	1619.18	-110.76	115.16	-5.58	1713678.02	14351087.35	39°31'9.1747"N	80°44'24.7906"W	115.30	357.225	0.13	-0.10	0.48	
1722.00	9.920	353.560	1711.70	-126.87	131.74	-6.90	1713676.70	14351103.92	39°31'9.3386"N	80°44'24.8068"W	131.92	357.002	0.91	-0.59	-3.91	
1816.00	10.520	356.780	1804.21	-143.04	148.35	-8.29	1713675.31	14351120.52	39°31'9.5028"N	80°44'24.8239"W	148.58	356.801	0.88	0.64	3.43	
1910.00	11.070	3.510	1896.55	-159.65	165.93	-8.22	1713675.38	14351138.09	39°31'9.6765"N	80°44'24.8224"W	166.13	357.164	1.46	0.59	7.16	
2005.00	11.340	4.570	1989.73	-176.64	184.34	-6.92	1713676.69	14351156.50	39°31'9.8585"N	80°44'24.8051"W	184.47	357.851	0.36	0.28	1.12	
2099.00	11.130	3.860	2081.93	-193.49	202.61	-5.57	1713678.03	14351174.76	39°31'10.0389"N	80°44'24.7872"W	202.68	358.425	0.27	-0.22	-0.76	
2194.00	11.410	1.840	2175.10	-210.73	221.15	-4.65	1713678.95	14351193.29	39°31'10.2222"N	80°44'24.7748"W	221.20	358.795	0.51	0.29	-2.13	
2288.00	12.190	0.200	2267.12	-228.81	240.37	-4.32	1713679.28	14351212.50	39°31'10.4121"N	80°44'24.7698"W	240.40	358.971	0.90	0.83	-1.74	
2382.00	12.610	358.870	2358.92	-247.95	260.55	-4.49	1713679.12	14351232.68	39°31'10.6116"N	80°44'24.7712"W	260.59	359.014	0.54	0.45	-1.41	
2476.00	12.760	1.850	2450.63	-267.43	281.18	-4.35	1713679.25	14351253.30	39°31'10.8155"N	80°44'24.7688"W	281.22	359.113	0.71	0.16	3.17	
2570.00	12.770	1.680	2542.31	-286.87	301.94	-3.71	1713679.89	14351274.05	39°31'11.0206"N	80°44'24.7599"W	301.97	359.295	0.04	0.01	-0.18	

RECEIVED
Office of Oil and Gas
AUG 14 2025
WV Department of
Environmental Protection



Actual Wellpath Report

Skewed Unit 1H AWP Proj: 17423'
Page 3 of 11



REFERENCE WELLPATH IDENTIFICATION			
Operator	ANTERO RESOURCES CORPORATION	Well	Skewed Unit 1H
Field	Wetzel	API	47-103-03677-0000
Facility	Lincoln Pad	Wellbore	Skewed Unit 1H AWB
Slot	Slot C		

WELLPATH DATA (196 stations)																
MD (ft)	Inclination (°)	Azimuth (°)	TVD (ft)	Vert Sect (ft)	North (ft)	East (ft)	Grid East (US ft)	Grid North (US ft)	Latitude	Longitude	Closure Dist (ft)	Closure Dir (°)	DLS (°/100ft)	Build Rate (°/100ft)	Turn Rate (°/100ft)	Comments
2665.00	11.630	1.690	2635.16	-305.66	322.01	-3.12	1713680.48	14351294.11	39°31'11.2190"N	80°44'24.7516"W	322.02	359.444	1.20	-1.20	0.01	
2759.00	10.470	4.640	2727.42	-322.36	339.99	-2.15	1713681.45	14351312.09	39°31'11.3967"N	80°44'24.7385"W	340.00	359.637	1.37	-1.23	3.14	
2854.00	10.260	2.240	2820.87	-338.17	357.05	-1.12	1713682.48	14351329.14	39°31'11.5652"N	80°44'24.7248"W	357.05	359.820	0.51	-0.22	-2.53	
2949.00	10.260	358.580	2914.35	-354.13	373.96	-1.00	1713682.60	14351346.05	39°31'11.7324"N	80°44'24.7226"W	373.96	359.846	0.69	0.00	-3.85	
3044.00	10.030	0.210	3007.86	-370.01	390.69	-1.18	1713682.42	14351362.77	39°31'11.8977"N	80°44'24.7243"W	390.70	359.827	0.39	-0.24	1.72	
3138.00	10.090	359.520	3100.42	-385.56	407.11	-1.22	1713682.38	14351379.18	39°31'12.0600"N	80°44'24.7242"W	407.12	359.828	0.14	0.06	-0.73	
3232.00	9.700	2.150	3193.02	-400.76	423.26	-0.99	1713682.61	14351395.32	39°31'12.2196"N	80°44'24.7207"W	423.26	359.866	0.63	-0.41	2.80	
3327.00	9.630	0.170	3286.67	-415.74	439.20	-0.67	1713682.93	14351411.26	39°31'12.3772"N	80°44'24.7160"W	439.21	359.913	0.36	-0.07	-2.08	
3421.00	9.530	356.750	3379.36	-430.67	454.84	-1.09	1713682.51	14351426.89	39°31'12.5317"N	80°44'24.7207"W	454.84	359.863	0.61	-0.11	-3.64	
3499.00	9.590	354.060	3456.28	-443.22	467.75	-2.13	1713681.48	14351439.79	39°31'12.6593"N	80°44'24.7335"W	467.75	359.740	0.58	0.08	-3.45	
3606.00	9.380	349.950	3561.82	-460.52	485.20	-4.57	1713679.03	14351457.23	39°31'12.8318"N	80°44'24.7640"W	485.22	359.460	0.66	-0.20	-3.84	APS EM <8-3/4"> (3499')(3606'-6250')
3700.00	10.130	357.000	3654.46	-476.04	500.99	-6.34	1713677.26	14351473.03	39°31'12.9880"N	80°44'24.7860"W	501.03	359.275	1.50	0.80	7.50	
3795.00	11.980	4.890	3747.70	-493.10	519.16	-5.94	1713677.67	14351491.19	39°31'13.1676"N	80°44'24.7802"W	519.20	359.345	2.51	1.95	8.31	
3889.00	12.390	4.820	3839.58	-511.26	538.93	-4.26	1713679.34	14351510.95	39°31'13.3629"N	80°44'24.7581"W	538.95	359.547	0.44	0.44	-0.07	
3983.00	12.270	2.260	3931.41	-529.80	558.96	-3.02	1713680.59	14351530.97	39°31'13.5608"N	80°44'24.7415"W	558.97	359.691	0.60	-0.13	-2.72	
4078.00	12.050	359.280	4024.28	-548.64	578.97	-2.74	1713680.86	14351550.97	39°31'13.7585"N	80°44'24.7373"W	578.97	359.729	0.70	-0.23	-3.14	
4172.00	11.260	7.820	4116.35	-566.16	597.87	-1.62	1713681.98	14351569.86	39°31'13.9453"N	80°44'24.7222"W	597.87	359.845	2.02	-0.84	9.09	
4266.00	10.680	8.310	4208.63	-582.10	615.58	0.89	1713684.49	14351587.57	39°31'14.1203"N	80°44'24.6896"W	615.58	0.083	0.62	-0.62	0.52	
4360.00	10.260	4.290	4301.07	-597.55	632.55	2.78	1713686.37	14351604.53	39°31'14.2879"N	80°44'24.6649"W	632.55	0.251	0.90	-0.45	-4.28	
4454.00	9.560	359.800	4393.67	-612.63	648.70	3.37	1713686.97	14351620.68	39°31'14.4476"N	80°44'24.6566"W	648.71	0.298	1.11	-0.74	-4.78	
4549.00	9.370	6.640	4487.38	-627.09	664.27	4.24	1713687.84	14351636.24	39°31'14.6014"N	80°44'24.6450"W	664.29	0.366	1.20	-0.20	7.20	
4643.00	11.210	8.050	4579.86	-642.14	680.92	6.41	1713690.00	14351652.88	39°31'14.7659"N	80°44'24.6168"W	680.95	0.539	1.98	1.96	1.50	
4738.00	11.220	4.820	4673.05	-658.83	699.28	8.48	1713692.07	14351671.23	39°31'14.9473"N	80°44'24.5897"W	699.33	0.694	0.66	0.01	-3.40	
4832.00	9.830	0.490	4765.46	-674.77	716.41	9.31	1713692.91	14351688.36	39°31'15.1166"N	80°44'24.5784"W	716.47	0.745	1.70	-1.48	-4.61	
4927.00	9.820	7.500	4859.07	-689.68	732.56	10.44	1713694.04	14351704.50	39°31'15.2761"N	80°44'24.5634"W	732.63	0.816	1.26	-0.01	7.38	
5021.00	9.810	9.020	4951.70	-703.93	748.41	12.74	1713696.34	14351720.35	39°31'15.4328"N	80°44'24.5334"W	748.52	0.975	0.28	-0.01	1.62	
5116.00	8.960	3.020	5045.43	-717.95	763.79	14.40	1713697.99	14351735.72	39°31'15.5847"N	80°44'24.5117"W	763.93	1.080	1.36	-0.89	-6.32	
5210.00	9.830	3.370	5138.17	-732.17	779.11	15.26	1713698.85	14351751.03	39°31'15.7361"N	80°44'24.5002"W	779.26	1.122	0.93	0.93	0.37	
5304.00	11.070	4.480	5230.61	-747.87	796.12	16.43	1713700.03	14351768.04	39°31'15.9042"N	80°44'24.4846"W	796.29	1.183	1.34	1.32	1.18	
5399.00	10.590	1.440	5323.91	-764.43	813.94	17.37	1713700.96	14351785.85	39°31'16.0803"N	80°44'24.4720"W	814.13	1.222	0.79	-0.51	-3.20	

RECEIVED
Office of Oil and Gas
AUG 14 2025
Environmental Protection
Department of



Actual Wellpath Report

Skewed Unit 1H AWP Proj: 17423'
Page 4 of 11



REFERENCE WELLPATH IDENTIFICATION			
Operator	ANTERO RESOURCES CORPORATION	Well	Skewed Unit 1H
Field	Wetzel	API	47-103-03677-0000
Facility	Lincoln Pad	Wellbore	Skewed Unit 1H AWP
Slot	Slot C		

WELLPATH DATA (196 stations) † = interpolated, ‡ = extrapolated station																
MD [ft]	Inclination [°]	Azimuth [°]	TVD [ft]	Vert Sect [ft]	North [ft]	East [ft]	Grid East [US ft]	Grid North [US ft]	Latitude	Longitude	Closure Dist [ft]	Closure Dir [°]	DLS ["/100ft]	Build Rate ["/100ft]	Turn Rate ["/100ft]	Comments
5494.00	11.480	3.460	5417.16	-781.36	832.10	18.16	1713701.75	14351804.00	39°31'16.2598"N	80°44'24.4613"W	832.30	1.250	1.02	0.94	2.13	
5589.00	12.700	7.970	5510.05	-799.42	851.88	20.17	1713703.77	14351823.78	39°31'16.4552"N	80°44'24.4348"W	852.12	1.357	1.62	1.28	4.75	
5683.00	12.210	5.990	5601.84	-817.65	872.00	22.64	1713706.24	14351843.89	39°31'16.6540"N	80°44'24.4025"W	872.30	1.488	0.69	-0.52	-2.11	
5778.00	11.080	2.660	5694.88	-835.26	891.11	24.12	1713707.71	14351862.99	39°31'16.8428"N	80°44'24.3830"W	891.44	1.550	1.38	-1.19	-3.51	
5872.00	10.240	358.910	5787.26	-851.61	908.49	24.38	1713707.97	14351880.36	39°31'17.0145"N	80°44'24.3791"W	908.82	1.537	1.16	-0.89	-3.99	
5967.00	9.800	4.810	5880.81	-867.06	924.99	24.89	1713708.48	14351896.85	39°31'17.1776"N	80°44'24.3719"W	925.33	1.542	1.17	-0.46	6.21	
6062.00	8.960	4.810	5974.54	-881.23	940.42	26.19	1713709.78	14351912.28	39°31'17.3300"N	80°44'24.3547"W	940.78	1.595	0.88	-0.88	0.00	
6156.00	9.610	7.170	6067.31	-894.98	955.50	27.79	1713711.37	14351927.35	39°31'17.4790"N	80°44'24.3338"W	955.90	1.666	0.80	0.69	2.51	
6250.00	10.260	0.780	6159.90	-909.91	971.65	28.88	1713712.47	14351943.50	39°31'17.6387"N	80°44'24.3193"W	972.08	1.702	1.36	0.69	-6.80	
6302.00	10.110	358.060	6211.09	-918.64	980.85	28.79	1713712.38	14351952.69	39°31'17.7295"N	80°44'24.3201"W	981.27	1.681	0.97	-0.29	-5.23	BH Lucida <8-1/2"> (6250')(6302'-17398')
6351.00	7.030	5.380	6259.53	-925.49	988.13	28.92	1713712.51	14351959.97	39°31'17.8015"N	80°44'24.3181"W	988.55	1.677	6.66	-6.29	14.94	
6445.00	6.850	55.270	6352.93	-932.27	997.06	34.07	1713717.66	14351968.90	39°31'17.8896"N	80°44'24.2521"W	997.64	1.957	6.22	-0.19	53.07	
6539.00	7.440	109.110	6446.29	-930.05	998.26	44.44	1713728.03	14351970.10	39°31'17.9012"N	80°44'24.1197"W	999.25	2.549	6.89	0.63	57.28	
6633.00	12.300	150.650	6538.98	-916.43	987.52	55.12	1713738.70	14351959.36	39°31'17.7948"N	80°44'23.9839"W	989.06	3.195	8.85	5.17	44.19	
6727.00	19.190	159.760	6629.41	-891.10	964.27	65.39	1713748.96	14351936.12	39°31'17.5646"N	80°44'23.8537"W	966.48	3.879	7.77	7.33	9.69	
6818.00†	27.476	160.565	6712.90	-855.10	930.38	77.57	1713761.14	14351902.24	39°31'17.2294"N	80°44'23.6995"W	933.61	4.766	9.11	9.11	0.88	Sycamore: 6818' MD
6822.00	27.840	160.590	6716.44	-853.24	928.63	78.18	1713761.75	14351900.49	39°31'17.2121"N	80°44'23.6917"W	931.92	4.812	9.11	9.11	0.62	
6916.00	35.020	162.080	6796.60	-804.26	882.20	93.80	1713777.36	14351854.09	39°31'16.7528"N	80°44'23.4942"W	887.18	6.069	7.68	7.64	1.59	
6974.00†	40.517	161.439	6842.43	-768.75	848.48	104.92	1713788.48	14351820.38	39°31'16.4192"N	80°44'23.3535"W	854.95	7.049	9.50	9.48	-1.10	Middlesex: 6974' MD
7010.00	43.930	161.110	6869.09	-744.56	825.58	112.69	1713796.25	14351797.48	39°31'16.1925"N	80°44'23.2552"W	833.23	7.773	9.50	9.48	-0.91	
7104.00	52.970	161.200	6931.37	-674.29	759.07	135.39	1713818.93	14351731.00	39°31'15.5346"N	80°44'22.9680"W	771.05	10.113	9.62	9.62	0.10	
7128.00	55.185	161.303	6945.45	-654.85	740.66	141.63	1713825.18	14351712.60	39°31'15.3525"N	80°44'22.8890"W	754.08	10.826	9.24	9.23	0.43	Burkett: 7128' MD
7187.00†	60.632	161.536	6976.78	-604.89	693.30	157.55	1713841.09	14351665.26	39°31'14.8840"N	80°44'22.6876"W	710.98	12.803	9.24	9.23	0.39	Tully: 7187' MD
7199.00	61.740	161.580	6982.57	-594.37	683.33	160.88	1713844.41	14351655.29	39°31'14.7853"N	80°44'22.6456"W	702.01	13.248	9.24	9.23	0.37	
7293.00	70.750	161.970	7020.39	-508.43	601.69	187.75	1713871.27	14351573.68	39°31'13.9777"N	80°44'22.3057"W	630.30	17.330	9.59	9.59	0.41	
7387.00	74.230	161.130	7048.67	-418.81	516.67	216.12	1713899.63	14351488.69	39°31'13.1366"N	80°44'21.9468"W	560.05	22.699	3.80	3.70	-0.89	
7408.87†	75.557	161.055	7054.37	-397.69	496.69	222.96	1713906.47	14351468.73	39°31'12.9389"N	80°44'21.8602"W	544.44	24.175	6.08	6.07	-0.34	Marcellus POE: 7408.87' MD
7431.00	76.900	160.980	7059.64	-376.20	476.37	229.95	1713913.46	14351448.41	39°31'12.7379"N	80°44'21.7718"W	528.97	25.767	6.08	6.07	-0.34	
7482.00	80.070	160.420	7069.82	-326.23	429.21	246.47	1713929.97	14351401.27	39°31'12.2713"N	80°44'21.5628"W	494.94	29.866	6.31	6.22	-1.10	
7576.00	88.090	160.470	7079.50	-232.82	341.18	277.74	1713961.23	14351313.27	39°31'11.4004"N	80°44'21.1670"W	439.93	39.148	8.53	8.53	0.05	

RECEIVED
Office of Oil and Gas
AUG 14 2025
WV Department of
Environmental Protection



Actual Wellpath Report

Skewed Unit 1H AWP Proj: 17423'

Page 5 of 11



REFERENCE WELLPATH IDENTIFICATION

Operator	ANTERO RESOURCES CORPORATION	Well	Skewed Unit 1H
Field	Wetzel	API	47-103-03677-0000
Facility	Lincoln Pad	Wellbore	Skewed Unit 1H AWB
Slot	Slot C		

WELLPATH DATA (196 stations)

MD [ft]	Inclination [°]	Azimuth [°]	TVD [ft]	Vert Sect [ft]	North [ft]	East [ft]	Grid East [US ft]	Grid North [US ft]	Latitude	Longitude	Closure Dist [ft]	Closure Dir [°]	DLS [°/100ft]	Build Rate [°/100ft]	Turn Rate [°/100ft]	Comments
7670.00	89.260	160.300	7081.68	-138.85	252.66	309.28	1713992.76	14351224.79	39°31'10.5246"N	80°44'20.7677"W	399.36	50.754	1.26	1.24	-0.18	
7764.00	89.350	160.090	7082.82	-44.87	164.22	341.13	1714024.60	14351136.39	39°31'9.6497"N	80°44'20.3646"W	378.60	64.294	0.24	0.10	-0.22	
7858.00	89.260	160.040	7083.96	49.11	75.86	373.18	1714056.63	14351048.06	39°31'8.7755"N	80°44'19.9590"W	380.81	78.509	0.11	-0.10	-0.05	
7953.00	89.170	159.670	7085.26	144.08	-13.32	405.89	1714089.33	14350958.92	39°31'7.8931"N	80°44'19.5448"W	406.11	91.879	0.40	-0.09	-0.39	
8047.00	89.380	160.260	7086.45	238.05	-101.62	438.09	1714121.52	14350870.65	39°31'7.0195"N	80°44'19.1372"W	449.73	103.060	0.67	0.22	0.63	
8141.00	89.230	160.080	7087.59	332.03	-190.04	469.98	1714153.39	14350782.26	39°31'6.1447"N	80°44'18.7336"W	506.95	112.017	0.25	-0.16	-0.19	
8235.00	89.720	160.080	7088.45	426.01	-278.41	502.00	1714185.41	14350693.93	39°31'5.2704"N	80°44'18.3283"W	574.04	119.013	0.52	0.52	0.00	
8330.00	89.780	160.640	7088.87	521.00	-367.89	533.93	1714217.32	14350604.49	39°31'4.3852"N	80°44'17.9242"W	648.40	124.567	0.59	0.66	0.59	
8424.00	89.260	160.250	7089.65	614.99	-456.46	565.40	1714248.77	14350515.95	39°31'3.5088"N	80°44'17.5260"W	726.66	128.915	0.69	-0.55	-0.41	
8519.00	89.570	158.460	7090.62	709.94	-545.35	598.89	1714282.25	14350427.09	39°31'2.6293"N	80°44'17.1019"W	809.98	132.321	1.91	0.33	-1.88	
8613.00	89.780	160.460	7091.16	803.89	-633.37	631.87	1714315.22	14350339.11	39°31'1.7585"N	80°44'16.6844"W	894.66	135.068	2.14	0.22	2.13	
8707.00	89.630	159.790	7091.64	897.88	-721.77	663.82	1714347.16	14350250.75	39°31'0.8839"N	80°44'16.2799"W	980.62	137.395	0.73	-0.16	-0.71	
8801.00	89.750	160.050	7092.15	991.86	-810.05	696.10	1714379.42	14350162.50	39°31'0.0104"N	80°44'15.8714"W	1068.05	139.327	0.30	0.13	0.28	
8895.00	89.600	159.900	7092.68	1085.84	-898.37	728.28	1714411.59	14350074.22	39°30'59.1366"N	80°44'15.4640"W	1156.49	140.969	0.23	-0.16	-0.16	
8989.00	89.570	160.920	7093.36	1179.83	-986.92	759.80	1714443.10	14349985.70	39°30'58.2605"N	80°44'15.0652"W	1245.52	142.409	1.09	-0.03	1.09	
9084.00	89.570	160.530	7094.08	1274.82	-1076.60	791.16	1714474.44	14349896.06	39°30'57.3734"N	80°44'14.6684"W	1336.04	143.689	0.41	0.00	-0.41	
9178.00	89.600	160.790	7094.76	1368.82	-1165.29	822.29	1714505.56	14349807.40	39°30'56.4959"N	80°44'14.2745"W	1426.20	144.791	0.28	0.03	0.28	
9272.00	90.830	162.150	7094.40	1462.81	-1254.41	852.16	1714535.42	14349718.31	39°30'55.6142"N	80°44'13.8966"W	1516.48	145.811	1.95	1.31	1.45	
9366.00	89.690	160.920	7093.98	1556.80	-1343.57	881.93	1714565.18	14349629.19	39°30'54.7322"N	80°44'13.5201"W	1607.16	146.719	1.78	-1.21	-1.31	
9460.00	89.750	161.230	7094.44	1650.80	-1432.49	912.42	1714595.66	14349540.31	39°30'53.8525"N	80°44'13.1344"W	1698.39	147.505	0.34	0.06	0.33	
9555.00	89.660	159.570	7094.93	1745.79	-1521.98	944.28	1714627.51	14349450.86	39°30'52.9671"N	80°44'12.7311"W	1791.11	148.183	1.75	-0.09	-1.75	
9649.00	89.720	158.310	7095.43	1839.72	-1609.70	978.06	1714661.27	14349363.17	39°30'52.0992"N	80°44'12.3034"W	1883.54	148.717	1.34	0.06	-1.34	
9743.00	89.820	160.170	7095.81	1933.67	-1697.59	1011.38	1714694.58	14349275.31	39°30'51.2296"N	80°44'11.8816"W	1976.03	149.215	1.98	0.11	1.98	
9837.00	89.690	160.420	7096.21	2027.66	-1786.08	1043.07	1714726.26	14349186.85	39°30'50.3540"N	80°44'11.4805"W	2068.35	149.715	0.30	-0.14	0.27	
9931.00	89.540	160.970	7096.85	2121.65	-1874.79	1074.15	1714757.32	14349098.18	39°30'49.4764"N	80°44'11.0873"W	2160.70	150.190	0.61	-0.16	0.59	
10026.00	89.940	162.820	7097.28	2216.64	-1965.09	1103.67	1714786.83	14349007.92	39°30'48.5831"N	80°44'10.7141"W	2253.81	150.680	1.99	0.42	1.95	
10120.00	90.000	165.200	7097.33	2310.51	-2055.44	1129.56	1714812.71	14348917.60	39°30'47.6894"N	80°44'10.3871"W	2345.37	151.209	2.53	0.06	2.53	
10214.00	89.850	162.830	7097.45	2404.38	-2145.80	1155.44	1714838.59	14348827.28	39°30'46.7956"N	80°44'10.0602"W	2437.11	151.699	2.53	-0.16	-2.52	
10308.00	89.660	161.300	7097.85	2498.36	-2235.23	1184.39	1714867.52	14348737.88	39°30'45.9109"N	80°44'9.6942"W	2529.63	152.082	1.64	-0.20	-1.63	
10402.00	89.690	159.750	7098.38	2592.35	-2323.85	1215.73	1714898.85	14348649.30	39°30'45.0341"N	80°44'9.2977"W	2622.64	152.384	1.65	0.03	-1.65	

RECEIVED
Office of Oil and Gas
AUG 14 2025
WV Department of
Environmental Protection



Actual Wellpath Report

Skewed Unit 1H AWP Proj: 17423'
Page 6 of 11



REFERENCE WELLPATH IDENTIFICATION			
Operator	ANTERO RESOURCES CORPORATION	Well	Skewed Unit 1H
Field	Wetzel	API	47-103-03677-0000
Facility	Lincoln Pad	Wellbore	Skewed Unit 1H AWB
Slot	Slot C		

WELLPATH DATA (196 stations)																
MD [ft]	Inclination [°]	Azimuth [°]	TVD [ft]	Vert Sect [ft]	North [ft]	East [ft]	Grid East [US ft]	Grid North [US ft]	Latitude	Longitude	Closure Dist [ft]	Closure Dir [°]	DLS [°/100ft]	Build Rate [°/100ft]	Turn Rate [°/100ft]	Comments
10496.00	89.660	161.860	7098.92	2686.35	-2412.62	1246.63	1714929.74	14348560.57	39°30'44.1559"N	80°44'8.9067"W	2715.66	152.674	2.24	-0.03	2.24	
10591.00	89.750	161.420	7099.41	2781.34	-2502.78	1276.55	1714959.65	14348470.44	39°30'43.2640"N	80°44'8.5283"W	2809.54	152.976	0.47	0.09	-0.46	
10684.00	90.280	162.720	7099.38	2874.32	-2591.26	1305.18	1714988.27	14348382.00	39°30'42.3886"N	80°44'8.1663"W	2901.40	153.266	1.51	0.57	1.40	
10779.00	89.820	162.460	7099.30	2969.29	-2681.91	1333.61	1715016.68	14348291.38	39°30'41.4919"N	80°44'7.8071"W	2995.19	153.561	0.56	-0.48	-0.27	
10873.00	89.600	161.450	7099.77	3063.28	-2771.28	1362.72	1715045.79	14348202.05	39°30'40.6078"N	80°44'7.4389"W	3088.21	153.815	1.10	-0.23	-1.07	
10967.00	89.540	161.700	7100.48	3157.27	-2860.46	1392.43	1715075.48	14348112.90	39°30'39.7255"N	80°44'7.0632"W	3181.37	154.044	0.27	-0.06	0.27	
11062.00	89.690	162.220	7101.12	3252.26	-2950.79	1421.85	1715104.89	14348022.61	39°30'38.8319"N	80°44'6.6913"W	3275.49	154.273	0.57	0.16	0.55	
11156.00	90.990	162.140	7100.56	3346.24	-3040.27	1450.62	1715133.64	14347933.16	39°30'37.9467"N	80°44'6.3276"W	3368.61	154.493	1.39	1.38	-0.09	
11250.00	89.630	161.620	7100.05	3440.23	-3129.61	1479.85	1715162.87	14347843.86	39°30'37.0629"N	80°44'5.9580"W	3461.85	154.693	1.55	-1.45	-0.55	
11344.00	89.600	160.980	7100.68	3534.22	-3218.64	1509.99	1715192.99	14347754.86	39°30'36.1821"N	80°44'5.5768"W	3555.24	154.867	0.68	-0.03	-0.68	
11439.00	89.780	160.320	7101.20	3629.22	-3308.28	1541.46	1715224.45	14347665.26	39°30'35.2953"N	80°44'5.1786"W	3649.77	155.017	0.72	0.19	-0.69	
11533.00	89.450	162.040	7101.83	3723.21	-3397.24	1571.79	1715254.76	14347576.33	39°30'34.4151"N	80°44'4.7951"W	3743.23	155.172	1.86	-0.35	1.83	
11627.00	89.660	162.220	7102.56	3817.19	-3486.71	1600.63	1715283.60	14347486.90	39°30'33.5301"N	80°44'4.4304"W	3836.55	155.342	0.29	0.22	0.19	
11721.00	89.170	161.680	7103.52	3911.18	-3576.08	1629.75	1715312.71	14347397.57	39°30'32.6460"N	80°44'4.0622"W	3929.94	155.499	0.78	-0.52	-0.57	
11815.00	89.570	161.830	7104.55	4005.17	-3665.34	1659.18	1715342.13	14347308.34	39°30'31.7628"N	80°44'3.6901"W	4023.39	155.645	0.45	0.43	0.16	
11910.00	89.720	161.570	7105.14	4100.16	-3755.54	1689.01	1715371.94	14347218.18	39°30'30.8706"N	80°44'3.3130"W	4117.87	155.785	0.32	0.16	-0.27	
12004.00	89.630	161.190	7105.67	4194.16	-3844.62	1719.02	1715401.94	14347129.14	39°30'29.9893"N	80°44'2.9334"W	4211.43	155.909	0.42	-0.10	-0.40	
12098.00	89.600	162.060	7106.31	4288.15	-3933.82	1748.66	1715431.56	14347039.97	39°30'29.1068"N	80°44'2.5587"W	4304.97	156.034	0.93	-0.03	0.93	
12192.00	89.450	161.960	7107.09	4382.13	-4023.22	1777.69	1715460.58	14346950.60	39°30'28.2224"N	80°44'2.1917"W	4398.46	156.161	0.19	-0.16	-0.11	
12286.00	89.660	162.250	7107.82	4476.12	-4112.67	1806.57	1715489.45	14346861.19	39°30'27.3375"N	80°44'1.8266"W	4491.97	156.286	0.38	0.22	0.31	
12381.00	89.910	160.870	7108.17	4571.11	-4202.79	1836.62	1715519.49	14346771.10	39°30'26.4459"N	80°44'1.4466"W	4586.57	156.395	1.48	0.26	-1.45	
12475.00	90.000	161.010	7108.25	4665.11	-4291.64	1867.31	1715550.17	14346682.29	39°30'25.5669"N	80°44'1.0584"W	4680.28	156.486	0.18	0.10	0.15	
12569.00	90.000	161.320	7108.25	4759.11	-4380.60	1897.66	1715580.51	14346593.36	39°30'24.6868"N	80°44'0.6746"W	4773.97	156.578	0.33	0.00	0.33	
12663.00	90.490	161.730	7107.84	4853.11	-4469.76	1927.45	1715610.29	14346504.24	39°30'23.8047"N	80°44'0.2979"W	4867.63	156.673	0.68	0.52	0.44	
12757.00	90.280	162.130	7107.21	4947.09	-4559.12	1956.60	1715639.43	14346414.92	39°30'22.9207"N	80°43'59.9293"W	4961.24	156.773	0.48	-0.22	0.43	
12852.00	89.820	161.690	7107.13	5042.08	-4649.42	1986.10	1715668.92	14346324.65	39°30'22.0273"N	80°43'59.5564"W	5055.86	156.869	0.67	-0.48	-0.46	
12946.00	90.000	161.720	7107.28	5136.08	-4738.67	2015.61	1715698.41	14346235.43	39°30'21.1444"N	80°43'59.1833"W	5149.53	156.957	0.19	0.19	0.03	
13040.00	89.600	161.580	7107.61	5230.07	-4827.89	2045.20	1715727.99	14346146.25	39°30'20.2618"N	80°43'58.8091"W	5243.22	157.041	0.45	-0.43	-0.15	
13134.00	89.720	161.720	7108.16	5324.07	-4917.11	2074.80	1715757.57	14346057.07	39°30'19.3791"N	80°43'58.4350"W	5336.92	157.122	0.20	0.13	0.15	
13228.00	89.820	160.850	7108.54	5418.07	-5006.14	2104.96	1715787.72	14345968.07	39°30'18.4983"N	80°43'58.0536"W	5430.68	157.194	0.93	0.11	-0.93	

RECEIVED
Office of Oil and Gas
AUG 14 2025
WV Department of
Environmental Protection



Actual Wellpath Report

Skewed Unit 1H AWP Proj: 17423'
Page 7 of 11



REFERENCE WELLPATH IDENTIFICATION

Operator	ANTERO RESOURCES CORPORATION	Well	Skewed Unit 1H
Field	Wetzel	API	47-103-03677-0000
Facility	Lincoln Pad	Wellbore	Skewed Unit 1H AWB
Slot	Slot C		

WELLPATH DATA (196 stations)

MD [ft]	Inclination [°]	Azimuth [°]	TVD [ft]	Vert Sect [ft]	North [ft]	East [ft]	Grid East [US ft]	Grid North [US ft]	Latitude	Longitude	Closure Dist [ft]	Closure Dir [°]	DLS [°/100ft]	Build Rate [°/100ft]	Turn Rate [°/100ft]	Comments
13323.00	89.970	161.630	7108.71	5513.06	-5096.09	2135.51	1715818.26	14345878.16	39°30'17.6084"N	80°43'57.6672"W	5525.44	157.264	0.84	0.16	0.82	
13417.00	89.850	161.640	7108.86	5607.06	-5185.30	2165.12	1715847.87	14345788.98	39°30'16.7258"N	80°43'57.2928"W	5619.17	157.337	0.13	-0.13	0.01	
13512.00	89.630	161.750	7109.29	5702.05	-5275.49	2194.96	1715877.69	14345698.82	39°30'15.8336"N	80°43'56.9155"W	5713.90	157.409	0.26	-0.23	0.12	
13606.00	89.970	162.090	7109.62	5796.04	-5364.85	2224.13	1715906.85	14345609.50	39°30'14.9496"N	80°43'56.5468"W	5807.62	157.482	0.51	0.36	0.36	
13700.00	89.630	161.450	7109.95	5890.04	-5454.13	2253.54	1715936.25	14345520.26	39°30'14.0663"N	80°43'56.1750"W	5901.36	157.551	0.77	-0.36	-0.68	
13795.00	89.540	161.820	7110.64	5985.03	-5544.29	2283.47	1715966.17	14345430.13	39°30'13.1744"N	80°43'55.7966"W	5996.12	157.615	0.40	-0.09	0.39	
13889.00	89.780	161.230	7111.20	6079.02	-5633.44	2313.26	1715995.94	14345341.02	39°30'12.2924"N	80°43'55.4200"W	6089.90	157.676	0.68	0.26	-0.63	
13983.00	90.520	161.620	7110.95	6173.02	-5722.55	2343.20	1716025.87	14345251.95	39°30'11.4109"N	80°43'55.0413"W	6183.70	157.732	0.89	0.79	0.41	
14077.00	89.970	161.980	7110.55	6267.01	-5811.84	2372.56	1716055.22	14345162.69	39°30'10.5274"N	80°43'54.6702"W	6277.46	157.793	0.70	-0.59	0.38	
14172.00	89.940	161.930	7110.62	6362.00	-5902.17	2401.99	1716084.64	14345072.40	39°30'9.6339"N	80°43'54.2982"W	6372.22	157.855	0.06	-0.03	-0.05	
14266.00	89.420	162.030	7111.15	6455.99	-5991.56	2431.07	1716113.70	14344983.04	39°30'8.7496"N	80°43'53.9307"W	6465.98	157.915	0.56	-0.55	0.11	
14360.00	89.480	161.560	7112.05	6549.98	-6080.85	2460.43	1716143.06	14344893.79	39°30'7.8662"N	80°43'53.5594"W	6559.76	157.971	0.50	0.06	-0.50	
14454.00	89.940	160.850	7112.53	6643.98	-6169.83	2490.72	1716173.33	14344804.84	39°30'6.9858"N	80°43'53.1765"W	6653.61	158.016	0.90	0.49	-0.76	
14549.00	89.380	160.510	7113.09	6738.97	-6259.48	2522.15	1716204.75	14344715.23	39°30'6.0989"N	80°43'52.7789"W	6748.51	158.054	0.69	-0.59	-0.36	
14643.00	89.570	160.850	7113.95	6832.96	-6348.18	2553.24	1716235.83	14344626.56	39°30'5.2213"N	80°43'52.3856"W	6842.40	158.090	0.41	0.20	0.36	
14737.00	89.380	160.350	7114.81	6926.96	-6436.84	2584.46	1716267.04	14344537.93	39°30'4.3441"N	80°43'51.9907"W	6936.31	158.124	0.57	-0.20	-0.53	
14832.00	89.510	160.750	7115.73	7021.95	-6526.42	2616.10	1716298.66	14344448.40	39°30'3.4579"N	80°43'51.5906"W	7031.22	158.157	0.44	0.14	0.42	
14926.00	89.540	160.090	7116.51	7115.94	-6614.98	2647.60	1716330.15	14344359.87	39°30'2.5817"N	80°43'51.1921"W	7125.15	158.187	0.70	0.03	-0.70	
15020.00	90.310	161.090	7116.63	7209.93	-6703.63	2678.84	1716361.37	14344271.25	39°30'1.7046"N	80°43'50.7970"W	7219.06	158.218	1.34	0.82	1.06	
15115.00	90.280	160.290	7116.14	7304.93	-6793.29	2710.25	1716392.78	14344181.63	39°30'0.8176"N	80°43'50.3997"W	7313.97	158.250	0.84	-0.03	-0.84	
15209.00	90.060	160.060	7115.87	7398.91	-6881.72	2742.13	1716424.64	14344093.24	39°29'59.9427"N	80°43'49.9964"W	7407.92	158.274	0.34	-0.23	-0.24	
15303.00	90.090	160.560	7115.74	7492.90	-6970.22	2773.80	1716456.30	14344004.77	39°29'59.0670"N	80°43'49.5957"W	7501.86	158.300	0.53	0.03	0.53	
15397.00	90.250	159.920	7115.46	7586.89	-7058.68	2805.58	1716488.07	14343916.34	39°29'58.1918"N	80°43'49.1937"W	7595.81	158.324	0.70	0.17	-0.68	
15491.00	90.030	160.600	7115.23	7680.88	-7147.16	2837.33	1716519.80	14343827.90	39°29'57.3164"N	80°43'48.7921"W	7689.75	158.348	0.76	-0.23	0.72	
15585.00	90.150	160.820	7115.09	7774.88	-7235.88	2868.38	1716550.85	14343739.21	39°29'56.4386"N	80°43'48.3993"W	7783.67	158.376	0.27	0.13	0.23	
15679.00	89.780	160.620	7115.14	7868.88	-7324.61	2899.42	1716581.87	14343650.52	39°29'55.5608"N	80°43'48.0068"W	7877.60	158.404	0.45	-0.39	-0.21	
15773.00	90.030	160.950	7115.30	7962.88	-7413.37	2930.35	1716612.79	14343561.79	39°29'54.6826"N	80°43'47.6156"W	7971.52	158.432	0.44	0.27	0.35	
15867.00	90.090	160.570	7115.20	8056.87	-7502.12	2961.33	1716643.76	14343473.08	39°29'53.8045"N	80°43'47.2238"W	8065.44	158.459	0.41	0.06	-0.40	
15962.00	89.940	160.440	7115.18	8151.87	-7591.68	2993.03	1716675.45	14343383.56	39°29'52.9185"N	80°43'46.8228"W	8160.38	158.483	0.21	-0.16	-0.14	
16056.00	89.910	161.090	7115.30	8245.87	-7680.43	3024.00	1716706.40	14343294.84	39°29'52.0404"N	80°43'46.4312"W	8254.30	158.509	0.69	-0.03	0.69	

RECEIVED
 Office of Oil and Gas
 AUG 14 2025
 WV Department of
 Environmental Protection



Actual Wellpath Report

Skewed Unit 1H AWP Proj: 17423'
Page 8 of 11



REFERENCE WELLPATH IDENTIFICATION			
Operator	ANTERO RESOURCES CORPORATION	Well	Skewed Unit 1H
Field	Wetzel	API	47-103-03677-0000
Facility	Lincoln Pad	Wellbore	Skewed Unit 1H AWB
Slot	Slot C		

WELLPATH DATA (196 stations) † = interpolated, ‡ = extrapolated station																
MD (ft)	Inclination (°)	Azimuth (°)	TVD (ft)	Vert Sect (ft)	North (ft)	East (ft)	Grid East (US ft)	Grid North (US ft)	Latitude	Longitude	Closure Dist (ft)	Closure Dir (°)	DLS (°/100ft)	Build Rate (°/100ft)	Turn Rate (°/100ft)	Comments
16150.00	89.910	160.370	7115.45	8339.86	-7769.16	3055.02	1716737.41	14343206.15	39°29'51.1625"N	80°43'46.0389"W	8348.23	158.534	0.77	0.00	-0.77	
16245.00	90.740	161.160	7114.91	8434.86	-7858.85	3086.32	1716768.70	14343116.49	39°29'50.2751"N	80°43'45.6431"W	8443.16	158.559	1.21	0.87	0.83	
16339.00	89.540	160.180	7114.68	8528.85	-7947.55	3117.43	1716799.80	14343027.82	39°29'49.3975"N	80°43'45.2496"W	8537.09	158.582	1.65	-1.28	-1.04	
16433.00	89.970	160.650	7115.08	8622.85	-8036.11	3148.94	1716831.29	14342939.30	39°29'48.5213"N	80°43'44.8511"W	8631.04	158.602	0.68	0.46	0.50	
16527.00	89.690	159.880	7115.36	8716.83	-8124.59	3180.68	1716863.02	14342850.86	39°29'47.6459"N	80°43'44.4496"W	8725.00	158.620	0.87	-0.30	-0.82	
16622.00	89.660	160.020	7115.90	8811.81	-8213.83	3213.25	1716895.58	14342761.65	39°29'46.7630"N	80°43'44.0375"W	8819.98	158.635	0.15	-0.03	0.15	
16716.00	90.150	160.920	7116.05	8905.81	-8302.42	3244.68	1716926.99	14342673.09	39°29'45.8865"N	80°43'43.6401"W	8913.93	158.654	1.09	0.52	0.96	
16810.00	90.220	161.130	7115.75	8999.81	-8391.31	3275.24	1716957.54	14342584.24	39°29'45.0070"N	80°43'43.2536"W	9007.85	158.679	0.24	0.07	0.22	
16904.00	90.150	160.630	7115.45	9093.80	-8480.13	3306.03	1716988.32	14342495.46	39°29'44.1283"N	80°43'42.8643"W	9101.78	158.701	0.54	-0.07	-0.53	
16998.00	89.540	160.430	7115.70	9187.80	-8568.75	3337.36	1717019.64	14342406.87	39°29'43.2515"N	80°43'42.4681"W	9195.73	158.720	0.68	-0.65	-0.21	
17092.00	89.750	160.590	7116.28	9281.79	-8657.36	3368.72	1717050.99	14342318.29	39°29'42.3748"N	80°43'42.0714"W	9289.68	158.738	0.28	0.22	0.17	
17187.00	89.820	160.880	7116.64	9376.79	-8747.04	3400.07	1717082.32	14342228.65	39°29'41.4875"N	80°43'41.6750"W	9384.63	158.758	0.31	0.07	0.31	
17281.00	89.380	159.780	7117.30	9470.78	-8835.55	3431.70	1717113.95	14342140.17	39°29'40.6118"N	80°43'41.2749"W	9478.59	158.774	1.26	-0.47	-1.17	
17374.00	89.290	159.540	7118.38	9563.74	-8922.75	3464.03	1717146.26	14342053.01	39°29'39.7491"N	80°43'40.8659"W	9571.57	158.783	0.28	-0.10	-0.26	
17398.00	89.780	159.950	7118.57	9587.73	-8945.26	3472.34	1717154.56	14342030.51	39°29'39.5263"N	80°43'40.7608"W	9595.56	158.785	2.66	2.04	1.71	
17423.00†	89.780	159.950	7118.67	9612.73	-8968.75	3480.91	1717163.13	14342007.03	39°29'39.2939"N	80°43'40.6524"W	9620.56	158.788	0.00	0.00	0.00	Projected MD at TD: 17423'

DIRECTIONAL DIFFICULTY INDEX			
Directional Difficulty Index @ TD = 6.82		Reference: IADC/SPE 59196	
Values	Wellpath characterized as:	Values	Wellpath characterized as:
< 6.0	Relatively short or simple profiles with low tortuosity	6.4-6.8	Longer with relatively tortuous well paths
< 6.0-6.4	Shorter with high tortuosity or longer with lower tortuosity	> 6.8	Long tortuous profiles, high degree of difficulty

RECEIVED
 Office of Oil and Gas
AUG 14 2025
 WV Department of
 Environmental Protection



Actual Wellpath Report

Skewed Unit 1H AWP Proj: 17423'
Page 9 of 11



REFERENCE WELLPATH IDENTIFICATION			
Operator	ANTERO RESOURCES CORPORATION	Well	Skewed Unit 1H
Field	Wetzel	API	47-103-03677-0000
Facility	Lincoln Pad	Wellbore	Skewed Unit 1H AWB
Slot	Slot C		

HOLE & CASING SECTIONS - Ref Wellbore: Skewed Unit 1H AWB Ref Wellpath: Skewed Unit 1H AWP Proj: 17423'									
String/Diameter	Start MD [ft]	End MD [ft]	Interval [ft]	Start TVD [ft]	End TVD [ft]	Start N/S [ft]	Start E/W [ft]	End N/S [ft]	End E/W [ft]
20in Conductor	25.50	125.50	100.00	25.50	125.50	0.00	0.00	0.21	-0.21
17.5in Open Hole	125.50	486.00	360.50	125.50	486.00	0.21	-0.21	1.01	-0.47
13.375in Casing Surface	25.50	466.00	440.50	25.50	466.00	0.00	0.00	0.98	-0.46
12.25in Open Hole	486.00	3572.00	3086.00	486.00	3528.27	1.01	-0.47	479.71	-3.66
9.625in Casing Intermediate	25.50	3542.00	3516.50	25.50	3498.68	0.00	0.00	474.83	-2.96
8.75in Open Hole	3572.00	6326.00	2754.00	3528.27	6234.77	479.71	-3.66	984.74	28.75
8.5in Open Hole	6326.00	17423.00	11097.00	6234.77	7118.67	984.74	28.75	-8968.75	3480.91
5.5in Casing Production	25.50	17403.00	17377.50	25.50	7118.59	0.00	0.00	-8949.96	3474.05

TARGETS								
Name	TVD [ft]	North [ft]	East [ft]	Grid East [US ft]	Grid North [US ft]	Latitude	Longitude	Shape
Skewed Unit 1H POE Rev-2	7051.00	514.81	230.28	1713913.79	14351486.84	39°31'13.1178"N	80°44'21.7662"W	point
Skewed Unit 1H BHL Rev-3	7079.00	-9028.86	3497.88	1717180.10	14341946.94	39°29'38.6993"N	80°43'40.4382"W	point
Skewed Unit 1H LP Rev-3	7079.00	327.20	294.51	1713978.00	14351299.30	39°31'11.2618"N	80°44'20.9534"W	point
Skewed Unit 1H 50' L/R Hard Line	7500.00	-4257.02	1864.08	1715546.95	14346716.89	39°30'25.9091"N	80°44'1.0983"W	rectangle
2D Rectangle 10087.6 x 100.								

RECEIVED
 Office of Oil and Gas
AUG 14 2025
 WV Department of
 Environmental Protection



Actual Wellpath Report
 Skewed Unit 1H AWP Proj: 17423'
 Page 10 of 11



REFERENCE WELLPATH IDENTIFICATION			
Operator	ANTERO RESOURCES CORPORATION	Well	Skewed Unit 1H
Field	Wetzel	API	47-103-03677-0000
Facility	Lincoln Pad	Wellbore	Skewed Unit 1H AWB
Slot	Slot C		

WELLPATH COMPOSITION - Ref Wellbore: Skewed Unit 1H AWB Ref Wellpath: Skewed Unit 1H AWP Proj: 17423'					
Start MD [ft]	End MD [ft]	Positional Uncertainty Model	Log Name/Comment	Wellbore	Survey Date
25.50	400.00	Gyrodatta 2015 - GC+WIR+DPIPE	01 Gyrodatta MS Gyro <17-1/2"> (100'-400')	Skewed Unit 1H AWB	12/2/2024
400.00	648.00	Gyrodatta 2015 - GC+WIR+DPIPE	02 Gyrodatta MS Gyro <12-1/4"> (400')(500'-648')	Skewed Unit 1H AWB	12/4/2024
648.00	3499.00	BH NaviTrak (2019) (Axial Corr+HRGM)	03 APS EM <12-1/4"> (648')(693'-3499')	Skewed Unit 1H AWB	12/2/2024
3499.00	6250.00	BH NaviTrak (2019) (Axial Corr+HRGM)	04 APS EM <8-3/4"> (3499')(3606'-6250')	Skewed Unit 1H AWB	12/11/2024
6250.00	17423.00	BH AutoTrak Curve/Express (2019) (HRGM, Short spacing)	05 BH Lucida <8-1/2"> (6250')(6302'-17398')	Skewed Unit 1H AWB	12/11/2024

RECEIVED
 Office of Oil and Gas
AUG 14 2025
 WV Department of
 Environmental Protection



Actual Wellpath Report

Skewed Unit 1H AWP Proj: 17423'
Page 11 of 11



REFERENCE WELLPATH IDENTIFICATION			
Operator	ANTERO RESOURCES CORPORATION	Well	Skewed Unit 1H
Field	Wetzel	API	47-103-03677-0000
Facility	Lincoln Pad	Wellbore	Skewed Unit 1H AWB
Slot	Slot C		

COMMENTS
<p>Wellpath general comments API: 47-103-03677-0000 BH Job #: 112482511 Rig: H&P 317 Duration: 12/15/2024-12/17/2024 Gyrodatta MS Gyro <17-1/2"> (100'-400') Gyrodatta MS Gyro <12-1/4"> (400')(500'-648') APS EM <12-1/4"> (648')(693'-3499') APS EM <8-3/4"> (3499')(3606'-6250') BH Lucida <8-1/2"> (6250')(6302'-17398') Sycamore: 6818' MD Middlesex: 6974' MD Burkett: 7128' MD Tully: 7187' MD Marcellus POE: 7408.87' MD Projected MD at TD: 17423'</p>

RECEIVED
Office of Oil and Gas
AUG 14 2025
WV Department of
Environmental Protection