



ANTERO RESOURCES CORPORATION

Location: Wetzel County, WV
 Field: Wetzel
 Facility: Lincoln Pad

Slot: Slot D
 Well: Skewed Unit 2H
 Wellbore: Skewed Unit 2H PWB

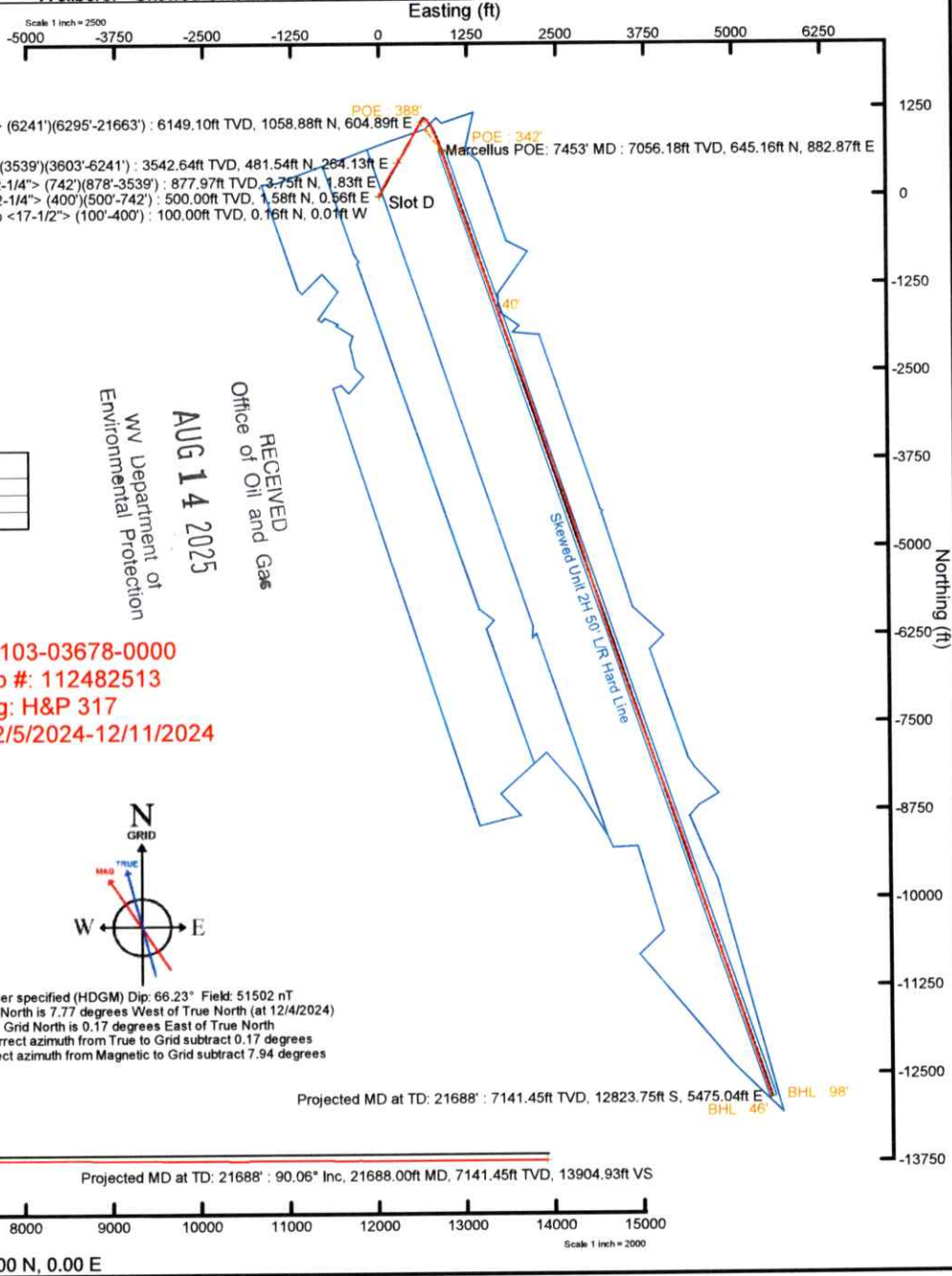
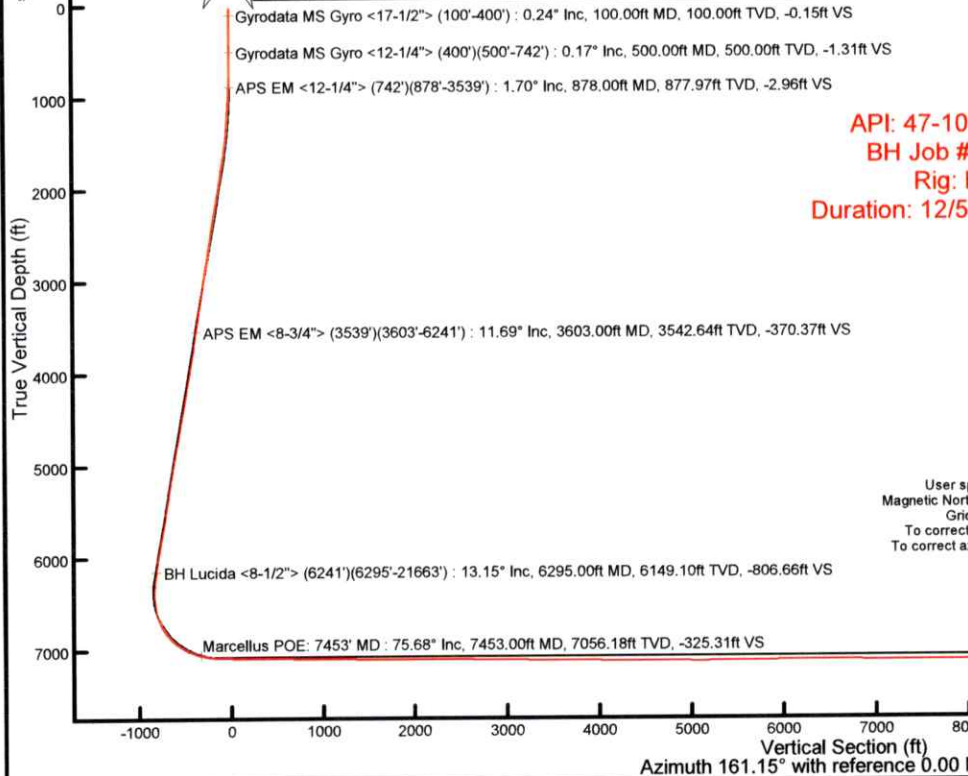


Plot reference wellpath is Skewed Unit 2H PWP Rev-A.1	Grid System: NAD27 / UTM Zone 17 North, US feet
True vertical depths are referenced to H&P 317 (RKB)	North Reference: Grid north
Reference wellpath measured depths are referenced to H&P 317 (RKB)	Scale: True distance
H&P 317 (RKB) to Mean Sea Level: 1285.5 feet	Coordinates are in feet referenced to Slot
Mean Sea Level to Ground level (At Slot: Slot D): -1260 feet	Depths are in feet
Offset wellpath MDs are referenced to each path's default MD datum	Created by: sednayar on 2025-01-22; Database: WA_MPL_EASTERNUS_Data

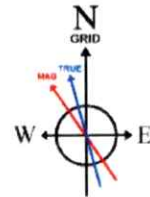
Location Information					
Facility Name	Grid East (US ft)	Grid North (US ft)	Latitude	Longitude	
Lincoln Pad	1713678.390	14351001.770	39°31'8.3286"N	80°44'24.7890"W	
Slot	Local N (ft)	Local E (ft)	Grid East (US ft)	Grid North (US ft)	Longitude
Slot D	-44.31	7.81	1713686.200	14350957.480	39°31'7.8904"N
Comment	Skewed Unit 2H				
H&P 317 (RKB) to Ground level (At Slot: Slot D)					25.5ft
Mean Sea Level to Ground level (At Slot: Slot D)					-1260ft
H&P 317 (RKB) to Mean Sea Level					1285.5ft

Well Profile Data								
Design Comment	MD (ft)	Inc (")	Az (°)	TVD (ft)	Local N (ft)	Local E (ft)	DLS ("/100ft)	VS (ft)
Tie On	25.50	0.000	29.316	25.50	0.00	0.00	0.00	0.00
KOP 1	845.00	0.000	29.316	845.00	0.00	0.00	0.00	0.00
End of Build	1796.46	14.272	29.316	1786.66	102.79	57.72	1.50	-78.63
Curve KOP	6403.31	14.272	29.316	6251.31	1093.04	813.80	0.00	-836.11
POE	7452.71	74.217	161.152	7051.00	644.76	891.88	8.00	-322.02
Landing Pt	7649.99	90.000	161.152	7078.00	460.40	954.81	8.00	-127.22
BHL	21692.77	90.000	161.152	7078.00	-12829.37	5491.50	0.00	13915.56

Well Data			
Slot	Well	Wellbore	Wellpath
Slot D	Skewed Unit 2H	Skewed Unit 2H AWP	Skewed Unit 2H AWP Proj. 21688'
Slot D	Skewed Unit 2H	Skewed Unit 2H PWB	Skewed Unit 2H PWP Rev-A.1



API: 47-103-03678-0000
 BH Job #: 112482513
 Rig: H&P 317
 Duration: 12/5/2024-12/11/2024



User specified (HDGM) Dip: 66.23° Field: 51502 nT
 Magnetic North is 7.77 degrees West of True North (at 12/4/2024)
 Grid North is 0.17 degrees East of True North
 To correct azimuth from True to Grid subtract 0.17 degrees
 To correct azimuth from Magnetic to Grid subtract 7.94 degrees

Projected MD at TD: 21688' : 7141.45ft TVD, 12823.75ft S, 5475.04ft E BHL 98'

Projected MD at TD: 21688' : 90.06° Inc, 21688.00ft MD, 7141.45ft TVD, 13904.93ft VS



Actual Wellpath Report

Skewed Unit 2H AWP Proj: 21688'

Page 1 of 11



REFERENCE WELLPATH IDENTIFICATION			
Operator	ANTERO RESOURCES CORPORATION	Well	Skewed Unit 2H
Field	Wetzel	API	47-103-03678-0000
Facility	Lincoln Pad	Wellbore	Skewed Unit 2H AWB
Slot	Slot D		

REPORT SETUP INFORMATION			
Projection System	NAD27 / UTM Zone 17 North, US feet	Software System	WellArchitect® 6.0
North Reference	Grid	User	Edsaryar
Scale	0.999606	Report Generated	1/22/2025 at 10:50:22 AM
Convergence at slot	0.17° East	Database	WA_MPL_EASTERNUS_Defn

WELLPATH LOCATION						
	Local coordinates		Grid coordinates		Geographic coordinates	
	North[ft]	East[ft]	Easting[US ft]	Northing[US ft]	Latitude	Longitude
Slot Location	-44.31	7.81	1713686.20	14350957.48	39°31'7.8904"N	80°44'24.6909"W
Facility Reference Pt			1713678.39	14351001.77	39°31'8.3286"N	80°44'24.7890"W
Field Reference Pt			0.00	0.00	0°00'0.0000"	85°29'19.3013"W

WELLPATH DATUM			
Calculation method	Minimum curvature	H&P 317 (RKB) to Facility Vertical Datum	1285.50ft
Horizontal Reference Pt	Slot	H&P 317 (RKB) to Mean Sea Level	1285.50ft
Vertical Reference Pt	H&P 317 (RKB)	H&P 317 (RKB) to Ground Level at Slot (Slot D)	25.50ft
MD Reference Pt	H&P 317 (RKB)	Section Origin	N 0.00, E 0.00 ft
Field Vertical Reference	Mean Sea Level	Section Azimuth	161.15°

RECEIVED
 Office of Oil and Gas
 AUG 14 2025
 WV Department of
 Environmental Protection



Actual Wellpath Report

Skewed Unit 2H AWP Proj: 21688'

Page 2 of 11



REFERENCE WELLPATH IDENTIFICATION

Operator	ANTERO RESOURCES CORPORATION	Well	Skewed Unit 2H
Field	Wetzel	API	47-103-03678-0000
Facility	Lincoln Pad	Wellbore	Skewed Unit 2H AWB
Slot	Slot D		

WELLPATH DATA (239 stations) † = interpolated, ‡ = extrapolated station

MD [ft]	Inclination [°]	Azimuth [°]	TVD [ft]	Vert Sect [ft]	North [ft]	East [ft]	Grid East [US ft]	Grid North [US ft]	Latitude	Longitude	Closure Dist [ft]	Closure Dir [°]	DLS ["/100ft]	Build Rate ["/100ft]	Turn Rate ["/100ft]	Comments
0.00	0.00	357.210	0.00	0.00	0.00	0.00	1713686.20	14350957.48	39°31'7.8904"N	80°44'24.6909"W	0.00	0.000	0.00	0.00	0.00	
25.50	0.00	357.210	25.50	0.00	0.00	0.00	1713686.20	14350957.48	39°31'7.8904"N	80°44'24.6909"W	0.00	0.000	0.00	0.00	0.00	
100.00	0.240	357.210	100.00	-0.15	0.16	-0.01	1713686.19	14350957.64	39°31'7.8920"N	80°44'24.6910"W	0.16	357.210	0.32	0.32	0.00	Gyrodata MS Gyro <17-1/2"> (100'-400')
200.00	0.210	10.250	200.00	-0.51	0.55	0.01	1713686.21	14350958.03	39°31'7.8958"N	80°44'24.6907"W	0.55	1.557	0.06	-0.03	13.04	
300.00	0.340	17.930	300.00	-0.91	1.01	0.14	1713686.34	14350958.49	39°31'7.9004"N	80°44'24.6891"W	1.02	7.839	0.13	0.13	7.68	
400.00	0.170	43.760	400.00	-1.21	1.40	0.33	1713686.53	14350958.88	39°31'7.9042"N	80°44'24.6866"W	1.44	13.392	0.20	-0.17	25.83	
500.00	0.170	60.160	500.00	-1.31	1.58	0.56	1713686.76	14350959.06	39°31'7.9060"N	80°44'24.6837"W	1.68	19.663	0.05	0.00	16.40	Gyrodata MS Gyro <12-1/4"> (400')(500'-742')
600.00	0.070	86.730	600.00	-1.32	1.66	0.75	1713686.95	14350959.14	39°31'7.9068"N	80°44'24.6813"W	1.82	24.475	0.11	-0.10	26.57	
700.00	0.130	39.480	700.00	-1.37	1.75	0.89	1713687.09	14350959.23	39°31'7.9077"N	80°44'24.6796"W	1.96	26.916	0.10	0.06	-47.25	
742.00	0.120	60.230	742.00	-1.40	1.81	0.96	1713687.15	14350959.28	39°31'7.9083"N	80°44'24.6787"W	2.04	27.885	0.11	-0.02	49.40	
878.00	1.700	21.830	877.97	-2.96	3.75	1.83	1713688.03	14350961.23	39°31'7.9274"N	80°44'24.6675"W	4.17	26.008	1.18	1.16	-28.24	APS EM <12-1/4"> (742')(878'-3539')
969.00	3.860	22.830	968.86	-6.27	7.83	3.52	1713689.72	14350965.30	39°31'7.9677"N	80°44'24.6457"W	8.58	24.217	2.37	2.37	1.10	
1060.00	4.590	24.450	1059.61	-11.21	13.96	6.22	1713692.41	14350971.44	39°31'8.0283"N	80°44'24.6111"W	15.28	23.995	0.81	0.80	1.78	
1155.00	5.620	28.080	1154.24	-17.15	21.53	9.98	1713696.17	14350979.00	39°31'8.1029"N	80°44'24.5628"W	23.73	24.868	1.14	1.08	3.82	
1249.00	5.820	29.350	1247.77	-23.47	29.74	14.48	1713700.67	14350987.21	39°31'8.1840"N	80°44'24.5051"W	33.08	25.960	0.25	0.21	1.35	
1343.00	6.830	26.540	1341.20	-30.57	38.90	19.31	1713705.51	14350996.36	39°31'8.2743"N	80°44'24.4431"W	43.43	26.406	1.12	1.07	-2.99	
1437.00	8.090	24.690	1434.40	-39.29	49.91	24.57	1713710.77	14351007.37	39°31'8.3830"N	80°44'24.3755"W	55.63	26.216	1.36	1.34	-1.97	
1531.00	9.700	24.640	1527.26	-49.83	63.12	30.64	1713716.83	14351020.57	39°31'8.5134"N	80°44'24.2976"W	70.16	25.894	1.71	1.71	-0.05	
1626.00	11.130	25.560	1620.70	-62.19	78.66	37.93	1713724.12	14351036.11	39°31'8.6668"N	80°44'24.2040"W	87.33	25.744	1.52	1.51	0.97	
1719.00	12.360	24.620	1711.75	-75.83	95.81	45.95	1713732.13	14351053.25	39°31'8.8361"N	80°44'24.1010"W	106.26	25.623	1.34	1.32	-1.01	
1814.00	13.310	25.940	1804.37	-90.97	114.89	54.97	1713741.15	14351072.32	39°31'9.0244"N	80°44'23.9853"W	127.36	25.570	1.05	1.00	1.39	
1908.00	14.290	28.930	1895.66	-106.44	134.77	65.32	1713751.49	14351092.20	39°31'9.2206"N	80°44'23.8525"W	149.77	25.857	1.29	1.04	3.18	
2002.00	13.910	30.320	1986.83	-121.62	154.68	76.63	1713762.80	14351112.10	39°31'9.4170"N	80°44'23.7074"W	172.62	26.355	0.54	-0.40	1.48	
2097.00	13.370	26.910	2079.15	-136.75	174.33	87.37	1713773.53	14351131.74	39°31'9.6109"N	80°44'23.5697"W	195.00	26.619	1.02	-0.57	-3.59	
2191.00	12.790	24.690	2170.71	-151.88	193.48	96.63	1713782.80	14351150.88	39°31'9.7999"N	80°44'23.4507"W	216.27	26.540	0.82	-0.62	-2.36	
2286.00	12.460	24.180	2263.41	-166.99	212.38	105.22	1713791.38	14351169.78	39°31'9.9865"N	80°44'23.3404"W	237.02	26.356	0.37	-0.35	-0.54	
2380.00	13.460	26.780	2355.02	-182.06	231.40	114.31	1713800.46	14351188.79	39°31'10.1742"N	80°44'23.2238"W	258.09	26.289	1.23	1.06	2.77	
2473.00	14.750	32.910	2445.22	-196.95	251.00	125.62	1713811.77	14351208.38	39°31'10.3676"N	80°44'23.0788"W	280.68	26.586	2.12	1.39	6.59	
2568.00	14.270	32.940	2537.19	-211.68	270.98	138.56	1713824.70	14351228.35	39°31'10.5647"N	80°44'22.9130"W	304.35	27.081	0.51	-0.51	0.03	
2662.00	13.980	31.930	2628.35	-226.03	290.34	150.86	1713837.00	14351247.71	39°31'10.7557"N	80°44'22.7552"W	327.19	27.456	0.40	-0.31	-1.07	

RECEIVED
 Office of Oil and Gas
 AUG 14 2025
 WV Department of
 Environmental Protection



Actual Wellpath Report

Skewed Unit 2H AWP Proj: 21688'

Page 3 of 11



REFERENCE WELLPATH IDENTIFICATION

Operator	ANTERO RESOURCES CORPORATION	Well	Skewed Unit 2H
Field	Wetzel	API	47-103-03678-0000
Facility	Lincoln Pad	Wellbore	Skewed Unit 2H AWB
Slot	Slot D		

WELLPATH DATA (239 stations)

MD [ft]	Inclination [°]	Azimuth [°]	TVD [ft]	Vert Sect [ft]	North [ft]	East [ft]	Grid East [US ft]	Grid North [US ft]	Latitude	Longitude	Closure Dist [ft]	Closure Dir [°]	DLS ["/100ft]	Build Rate ["/100ft]	Turn Rate ["/100ft]	Comments
2757.00	13.510	30.180	2720.63	-240.56	309.67	162.51	1713848.64	14351267.03	39°31'10.9464"N	80°44'22.6059"W	349.72	27.689	0.66	-0.49	-1.84	
2852.00	13.850	30.960	2812.93	-255.17	329.02	173.94	1713860.07	14351286.37	39°31'11.1372"N	80°44'22.4594"W	372.16	27.863	0.41	0.36	0.82	
2947.00	14.620	34.400	2905.02	-269.68	348.66	186.56	1713872.69	14351306.00	39°31'11.3310"N	80°44'22.2975"W	395.43	28.150	1.20	0.81	3.62	
3041.00	13.630	34.400	2996.17	-283.41	367.59	199.52	1713885.64	14351324.92	39°31'11.5177"N	80°44'22.1315"W	418.24	28.492	1.05	-1.05	0.00	
3136.00	14.340	32.610	3088.36	-297.44	386.73	212.18	1713898.30	14351344.06	39°31'11.7066"N	80°44'21.9692"W	441.12	28.752	0.88	0.75	-1.88	
3230.00	13.410	31.140	3179.61	-311.70	405.87	224.09	1713910.21	14351363.19	39°31'11.8954"N	80°44'21.8165"W	463.62	28.905	1.06	-0.99	-1.56	
3324.00	13.910	28.720	3270.95	-326.33	425.11	235.16	1713921.27	14351382.42	39°31'12.0852"N	80°44'21.6746"W	485.82	28.950	0.81	0.53	-2.57	
3419.00	13.140	26.470	3363.32	-341.63	444.79	245.46	1713931.56	14351402.09	39°31'12.2794"N	80°44'21.5424"W	508.02	28.893	0.98	-0.81	-2.37	
3513.00	13.310	27.380	3454.83	-356.62	463.96	255.20	1713941.30	14351421.26	39°31'12.4686"N	80°44'21.4174"W	529.51	28.813	0.29	0.18	0.97	
3539.00	13.150	27.360	3480.14	-360.74	469.24	257.94	1713944.03	14351426.54	39°31'12.5208"N	80°44'21.3823"W	535.46	28.797	0.62	-0.62	-0.08	
3603.00	11.690	26.040	3542.64	-370.37	481.54	264.13	1713950.22	14351438.83	39°31'12.6421"N	80°44'21.3028"W	549.22	28.745	2.32	-2.28	-2.06	APS EM <8-3/4"> (3539')(3603'-6241')
3697.00	12.500	35.090	3634.56	-383.11	498.42	274.16	1713960.25	14351455.70	39°31'12.8086"N	80°44'21.1742"W	568.84	28.813	2.19	0.86	9.63	
3791.00	14.880	34.370	3725.88	-396.33	516.71	286.82	1713972.91	14351473.98	39°31'12.9890"N	80°44'21.0120"W	590.98	29.034	2.54	2.53	-0.77	
3885.00	14.760	30.570	3816.76	-411.34	536.98	299.72	1713985.81	14351494.25	39°31'13.1890"N	80°44'20.8466"W	614.96	29.169	1.04	-0.13	-4.04	
3980.00	14.160	30.830	3908.75	-426.73	557.38	311.83	1713997.91	14351514.64	39°31'13.3903"N	80°44'20.6913"W	638.68	29.226	0.64	-0.63	0.27	
4074.00	16.350	36.220	3999.43	-441.75	577.93	325.55	1714011.62	14351535.18	39°31'13.5930"N	80°44'20.5155"W	663.31	29.393	2.77	2.33	5.73	
4168.00	16.320	35.140	4089.64	-457.09	599.40	340.97	1714027.03	14351556.64	39°31'13.8048"N	80°44'20.3180"W	689.59	29.633	0.32	-0.03	-1.15	
4262.00	15.150	31.720	4180.12	-472.66	620.65	355.03	1714041.09	14351577.89	39°31'14.0144"N	80°44'20.1378"W	715.02	29.771	1.59	-1.24	-3.64	
4357.00	15.930	30.830	4271.64	-488.98	642.41	368.24	1714054.29	14351599.63	39°31'14.2290"N	80°44'19.9684"W	740.46	29.822	0.86	0.82	-0.94	
4451.00	14.870	26.590	4362.27	-505.79	664.27	380.25	1714066.30	14351621.49	39°31'14.4447"N	80°44'19.8144"W	765.40	29.788	1.64	-1.13	-4.51	
4546.00	13.850	27.450	4454.30	-522.20	685.26	390.94	1714076.99	14351642.47	39°31'14.6519"N	80°44'19.6771"W	788.94	29.705	1.10	-1.07	0.91	
4640.00	13.900	31.260	4545.56	-537.21	704.90	401.99	1714088.03	14351662.10	39°31'14.8457"N	80°44'19.5354"W	811.47	29.695	0.97	0.05	4.05	
4734.00	15.710	31.910	4636.44	-552.51	725.35	414.58	1714100.61	14351682.55	39°31'15.0475"N	80°44'19.3740"W	835.47	29.750	1.93	1.93	0.69	
4828.00	14.140	25.800	4727.27	-568.73	746.50	426.30	1714112.33	14351703.68	39°31'15.2561"N	80°44'19.2236"W	859.65	29.729	2.36	-1.67	-6.50	
4922.00	13.670	24.090	4818.51	-585.03	766.97	435.83	1714121.86	14351724.15	39°31'15.4582"N	80°44'19.1012"W	882.16	29.607	0.66	-0.50	-1.82	
5016.00	13.820	24.140	4909.82	-601.37	787.36	444.96	1714130.98	14351744.53	39°31'15.6594"N	80°44'18.9840"W	904.39	29.472	0.16	0.16	0.05	
5112.00	14.730	24.990	5002.86	-618.56	808.89	454.80	1714140.82	14351766.05	39°31'15.8719"N	80°44'18.8576"W	927.98	29.347	0.97	0.95	0.89	
5206.00	13.750	28.210	5093.97	-634.79	829.56	465.13	1714151.15	14351786.71	39°31'16.0759"N	80°44'18.7250"W	951.06	29.279	1.34	-1.04	3.43	
5301.00	13.290	29.170	5186.34	-649.79	849.05	475.79	1714161.80	14351806.19	39°31'16.2682"N	80°44'18.5883"W	973.27	29.266	0.54	-0.48	1.01	
5396.00	13.600	30.440	5278.73	-664.37	868.21	486.77	1714172.78	14351825.35	39°31'16.4573"N	80°44'18.4475"W	995.36	29.278	0.45	0.33	1.34	

RECEIVED
 Office of Oil and Gas
 AUG 14 2025
 WV Department of
 Environmental Protection



Actual Wellpath Report

Skewed Unit 2H AWP Proj: 21688'
Page 4 of 11



REFERENCE WELLPATH IDENTIFICATION			
Operator	ANTERO RESOURCES CORPORATION	Well	Skewed Unit 2H
Field	Wetzel	API	47-103-03678-0000
Facility	Lincoln Pad	Wellbore	Skewed Unit 2H AWB
Slot	Slot D		

WELLPATH DATA (239 stations) † = interpolated, ‡ = extrapolated station																
MD (ft)	Inclination (°)	Azimuth (°)	TVD (ft)	Vert Sect (ft)	North (ft)	East (ft)	Grid East [US ft]	Grid North [US ft]	Latitude	Longitude	Closure Dist (ft)	Closure Dir (°)	DLS (°/100ft)	Build Rate (°/100ft)	Turn Rate (°/100ft)	Comments
5490.00	13.840	32.720	5370.05	-678.57	887.20	498.45	1714184.45	14351844.33	39°31'16.6446"N	80°44'18.2978"W	1017.63	29.328	0.63	0.26	2.43	
5584.00	14.850	35.010	5461.12	-692.66	906.52	511.44	1714197.44	14351863.64	39°31'16.8352"N	80°44'18.1313"W	1040.84	29.431	1.23	1.07	2.44	
5678.00	13.460	30.330	5552.27	-706.92	925.83	523.87	1714209.87	14351882.95	39°31'17.0257"N	80°44'17.9719"W	1063.77	29.503	1.91	-1.48	-4.98	
5772.00	14.090	25.810	5643.56	-722.21	945.58	534.38	1714220.37	14351902.68	39°31'17.2206"N	80°44'17.8371"W	1086.13	29.472	1.33	0.67	-4.81	
5866.00	15.960	26.980	5734.35	-739.35	967.40	545.23	1714231.21	14351924.49	39°31'17.4359"N	80°44'17.6979"W	1110.46	29.406	2.02	1.99	1.24	
5960.00	16.480	30.220	5824.61	-757.10	990.44	557.80	1714243.78	14351947.52	39°31'17.6632"N	80°44'17.5366"W	1136.71	29.388	1.11	0.55	3.45	
6055.00	14.530	35.670	5916.15	-772.84	1011.76	571.53	1714257.51	14351968.84	39°31'17.8736"N	80°44'17.3605"W	1162.03	29.462	2.56	-2.05	5.74	
6149.00	13.970	35.870	6007.26	-786.24	1030.54	585.06	1714271.03	14351987.61	39°31'18.0588"N	80°44'17.1873"W	1185.03	29.585	0.60	-0.60	0.21	
6241.00	13.750	35.150	6096.58	-799.08	1048.48	597.86	1714283.82	14352005.54	39°31'18.2357"N	80°44'17.0232"W	1206.95	29.693	0.30	-0.24	-0.78	
6295.00	13.150	32.850	6149.10	-806.66	1058.88	604.89	1714290.85	14352015.95	39°31'18.3384"N	80°44'16.9332"W	1219.48	29.737	1.49	-1.11	-4.26	BH Lucida <8-1/2"> (6241')(6295'-21663')
6354.00	13.890	29.240	6206.46	-815.55	1070.70	611.99	1714297.95	14352027.76	39°31'18.4550"N	80°44'16.8421"W	1233.26	29.751	1.90	1.25	-6.12	
6449.00	10.990	45.700	6299.25	-827.06	1086.98	624.04	1714310.00	14352044.03	39°31'18.6156"N	80°44'16.6877"W	1253.38	29.860	4.79	-3.05	17.33	
6543.00	11.200	74.160	6391.56	-830.44	1095.74	639.25	1714325.20	14352052.79	39°31'18.7017"N	80°44'16.4933"W	1268.58	30.259	5.77	0.22	30.28	
6638.00	12.880	107.370	6484.58	-823.69	1095.10	658.26	1714344.20	14352052.14	39°31'18.6947"N	80°44'16.2508"W	1277.71	31.010	7.39	1.77	34.96	
6732.00	14.510	129.340	6575.97	-807.48	1084.50	677.38	1714363.31	14352041.55	39°31'18.5894"N	80°44'16.0072"W	1278.66	31.989	5.76	1.73	23.37	
6826.00	21.350	143.170	6665.39	-781.15	1063.30	696.77	1714382.70	14352020.36	39°31'18.3794"N	80°44'15.7605"W	1271.26	33.236	8.52	7.28	14.71	
6879.00†	25.961	147.405	6713.93	-760.70	1045.80	708.81	1714394.73	14352002.86	39°31'18.2060"N	80°44'15.6075"W	1263.37	34.128	9.27	8.70	7.99	Sycamore: 6879' MD
6920.00	29.590	149.820	6750.20	-742.05	1029.48	718.74	1714404.65	14351986.55	39°31'18.0445"N	80°44'15.4815"W	1255.55	34.921	9.27	8.85	5.89	
7014.00	38.250	152.840	6828.13	-690.40	983.44	743.74	1714429.64	14351940.53	39°31'17.5887"N	80°44'15.1642"W	1233.00	37.099	9.38	9.21	3.21	
7037.00†	40.484	153.823	6845.91	-675.94	970.40	750.28	1714436.19	14351927.49	39°31'17.4597"N	80°44'15.0811"W	1226.62	37.710	10.08	9.71	4.27	Middlesex: 7037' MD
7109.00	47.520	156.400	6897.67	-626.24	925.03	771.25	1714457.15	14351882.15	39°31'17.0107"N	80°44'14.8153"W	1204.37	39.820	10.08	9.77	3.58	
7190.00†	54.757	157.721	6948.46	-563.37	866.98	795.78	1714481.67	14351824.11	39°31'16.4362"N	80°44'14.5044"W	1176.82	42.548	9.02	8.93	1.63	Burkett: 7190' MD
7203.00	55.920	157.910	6955.86	-552.69	857.07	799.82	1714485.70	14351814.22	39°31'16.3382"N	80°44'14.4532"W	1172.30	43.021	9.02	8.94	1.46	
7251.00†	60.000	158.250	6981.32	-512.07	819.33	815.00	1714500.88	14351776.49	39°31'15.9648"N	80°44'14.2609"W	1155.66	44.848	8.52	8.50	0.71	Tully: 7251' MD
7297.00	63.910	158.550	7002.94	-471.53	781.59	829.94	1714515.82	14351738.76	39°31'15.5914"N	80°44'14.0716"W	1140.04	46.718	8.52	8.50	0.65	
7391.00	71.430	158.680	7038.63	-384.72	700.69	861.62	1714547.48	14351657.89	39°31'14.7908"N	80°44'13.6704"W	1110.57	50.881	8.00	8.00	0.14	
7453.00†	75.678	159.425	7056.18	-325.31	645.16	882.87	1714568.72	14351602.39	39°31'14.2415"N	80°44'13.4013"W	1093.48	53.842	6.95	6.85	1.20	Marcellus POE: 7453' MD
7486.00	77.940	159.810	7063.71	-293.20	615.05	894.06	1714579.91	14351572.29	39°31'13.9435"N	80°44'13.2597"W	1085.19	55.475	6.95	6.85	1.17	
7580.00	83.490	160.440	7078.87	-200.48	527.84	925.58	1714611.42	14351485.11	39°31'13.0807"N	80°44'12.8607"W	1065.51	60.305	5.94	5.90	0.67	
7674.00	89.320	161.990	7084.76	-106.71	439.06	955.78	1714641.60	14351396.37	39°31'12.2024"N	80°44'12.4787"W	1051.80	65.327	6.42	6.20	1.65	

RECEIVED
Office of Oil and Gas
AUG 14 2025
WV Department of
Environmental Protection



Actual Wellpath Report

Skewed Unit 2H AWP Proj: 21688'
Page 5 of 11



REFERENCE WELLPATH IDENTIFICATION

Operator	ANTERO RESOURCES CORPORATION	Well	Skewed Unit 2H
Field	Wetzel	API	47-103-03678-0000
Facility	Lincoln Pad	Wellbore	Skewed Unit 2H AWB
Slot	Slot D		

WELLPATH DATA (239 stations)

MD [ft]	Inclination [°]	Azimuth [°]	TVD [ft]	Vert Sect [ft]	North [ft]	East [ft]	Grid East [US ft]	Grid North [US ft]	Latitude	Longitude	Closure Dist [ft]	Closure Dir [°]	DLS ["/100ft]	Build Rate ["/100ft]	Turn Rate ["/100ft]	Comments
7768.00	89.290	161.870	7085.90	-12.73	349.70	984.93	1714670.74	14351307.05	39°31'11.3184"N	80°44'12.1100"W	1045.17	70.452	0.13	-0.03	-0.13	
7862.00	89.320	161.850	7087.04	81.26	260.38	1014.20	1714699.99	14351217.76	39°31'10.4348"N	80°44'11.7399"W	1047.09	75.601	0.04	0.03	-0.02	
7957.00	89.600	161.160	7087.94	176.25	170.29	1044.33	1714730.12	14351127.71	39°31'9.5435"N	80°44'11.3588"W	1058.12	80.739	0.78	0.29	-0.73	
8051.00	89.480	161.340	7088.69	270.25	81.29	1074.54	1714760.32	14351038.73	39°31'8.6629"N	80°44'10.9766"W	1077.61	85.674	0.23	-0.13	0.19	
8146.00	89.380	161.850	7089.64	365.24	-8.85	1104.54	1714790.30	14350948.63	39°31'7.7712"N	80°44'10.5972"W	1104.57	90.459	0.55	-0.11	0.54	
8240.00	89.320	161.130	7090.70	459.23	-97.98	1134.38	1714820.13	14350859.54	39°31'6.8895"N	80°44'10.2198"W	1138.60	94.937	0.77	-0.06	-0.77	
8334.00	89.630	161.690	7091.56	553.23	-187.07	1164.34	1714850.08	14350770.48	39°31'6.0081"N	80°44'9.8408"W	1179.27	99.128	0.68	0.33	0.60	
8429.00	89.230	161.160	7092.51	648.22	-277.12	1194.60	1714880.33	14350680.47	39°31'5.1173"N	80°44'9.4580"W	1226.32	103.060	0.70	-0.42	-0.56	
8523.00	89.660	161.020	7093.42	742.22	-366.04	1225.06	1714910.78	14350591.58	39°31'4.2375"N	80°44'9.0726"W	1278.58	106.636	0.48	0.46	-0.15	
8617.00	89.480	161.370	7094.12	836.21	-455.02	1255.36	1714941.07	14350502.64	39°31'3.3572"N	80°44'8.6894"W	1335.28	109.924	0.42	-0.19	0.37	
8711.00	89.200	159.910	7095.21	930.20	-543.70	1286.52	1714972.21	14350414.00	39°31'2.4799"N	80°44'8.2951"W	1396.69	112.909	1.58	-0.30	-1.55	
8805.00	89.630	161.470	7096.17	1024.19	-632.40	1317.60	1715003.28	14350325.33	39°31'1.6023"N	80°44'7.9018"W	1461.51	115.639	1.72	0.46	1.66	
8899.00	89.540	161.010	7096.85	1118.19	-721.41	1347.83	1715033.50	14350236.36	39°31'0.7218"N	80°44'7.5194"W	1528.75	118.157	0.50	-0.10	-0.49	
8993.00	89.050	160.650	7098.01	1212.18	-810.19	1378.70	1715064.35	14350147.62	39°30'59.8435"N	80°44'7.1289"W	1599.13	120.440	0.65	-0.52	-0.38	
9088.00	89.570	158.800	7099.15	1307.14	-899.29	1411.61	1715097.26	14350058.55	39°30'58.9619"N	80°44'6.7123"W	1673.73	122.500	2.02	0.55	-1.95	
9182.00	89.720	161.220	7099.73	1401.11	-987.62	1443.75	1715129.37	14349970.25	39°30'58.0880"N	80°44'6.3056"W	1749.23	124.375	2.58	0.16	2.57	
9276.00	89.850	160.880	7100.08	1495.11	-1076.52	1474.27	1715159.89	14349881.38	39°30'57.2084"N	80°44'5.9195"W	1825.48	126.137	0.39	0.14	-0.36	
9371.00	89.480	161.000	7100.64	1590.11	-1166.31	1505.29	1715190.90	14349791.63	39°30'56.3201"N	80°44'5.5270"W	1904.26	127.769	0.41	-0.39	0.13	
9465.00	89.880	162.020	7101.16	1684.10	-1255.46	1535.10	1715220.70	14349702.52	39°30'55.4382"N	80°44'5.1500"W	1983.11	129.277	1.17	0.43	1.09	
9559.00	89.780	160.820	7101.44	1778.10	-1344.56	1565.05	1715250.64	14349613.46	39°30'54.5567"N	80°44'4.7712"W	2063.30	130.666	1.28	-0.11	-1.28	
9654.00	89.850	160.140	7101.75	1873.09	-1434.09	1596.80	1715282.37	14349523.95	39°30'53.6708"N	80°44'4.3695"W	2146.25	131.927	0.72	0.07	-0.72	
9748.00	89.660	160.380	7102.15	1967.08	-1522.57	1628.55	1715314.10	14349435.51	39°30'52.7955"N	80°44'3.9678"W	2229.43	133.074	0.33	-0.20	0.26	
9842.00	89.290	159.360	7103.01	2061.05	-1610.82	1660.89	1715346.44	14349347.30	39°30'51.9223"N	80°44'3.5583"W	2313.72	134.123	1.15	-0.39	-1.09	
9936.00	89.600	160.170	7103.92	2155.02	-1699.02	1693.40	1715378.93	14349259.14	39°30'51.0497"N	80°44'3.1469"W	2398.81	135.095	0.92	0.33	0.86	
10030.00	89.750	160.520	7104.46	2249.01	-1787.54	1725.02	1715410.54	14349170.65	39°30'50.1739"N	80°44'2.7468"W	2484.15	136.020	0.41	0.16	0.37	
10124.00	89.690	161.010	7104.92	2343.00	-1876.29	1755.99	1715441.49	14349081.93	39°30'49.2959"N	80°44'2.3550"W	2569.82	136.897	0.53	-0.06	0.52	
10218.00	89.750	160.710	7105.38	2437.00	-1965.09	1786.81	1715472.30	14348993.17	39°30'48.4173"N	80°44'1.9651"W	2655.99	137.721	0.33	0.06	-0.32	
10313.00	89.780	160.650	7105.77	2532.00	-2054.74	1818.24	1715503.72	14348903.55	39°30'47.5304"N	80°44'1.5675"W	2743.71	138.494	0.07	0.03	-0.06	
10408.00	89.750	159.970	7106.16	2626.99	-2144.18	1850.25	1715535.71	14348814.14	39°30'46.6454"N	80°44'1.1625"W	2832.13	139.209	0.72	-0.03	-0.72	
10502.00	89.720	160.470	7106.59	2720.97	-2232.64	1882.06	1715567.51	14348725.73	39°30'45.7703"N	80°44'0.7599"W	2920.07	139.870	0.53	-0.03	0.53	

RECEIVED
Office of Oil and Gas
AUG 14 2025
WV Department of
Environmental Protection



Actual Wellpath Report

Skewed Unit 2H AWP Proj: 21688'

Page 6 of 11



REFERENCE WELLPATH IDENTIFICATION

Operator	ANTERO RESOURCES CORPORATION	Well	Skewed Unit 2H
Field	Wetzel	API	47-103-03678-0000
Facility	Lincoln Pad	Wellbore	Skewed Unit 2H AWB
Slot	Slot D		

WELLPATH DATA (239 stations)

MD [ft]	Inclination [°]	Azimuth [°]	TVD [ft]	Vert Sect [ft]	North [ft]	East [ft]	Grid East [US ft]	Grid North [US ft]	Latitude	Longitude	Closure Dist [ft]	Closure Dir [°]	DLS ["/100ft]	Build Rate ["/100ft]	Turn Rate ["/100ft]	Comments
10596.00	89.690	159.370	7107.07	2814.95	-2320.92	1914.33	1715599.77	14348637.48	39°30'44.8968"N	80°44'0.3515"W	3008.54	140.484	1.17	-0.03	-1.17	
10690.00	89.570	159.800	7107.68	2908.91	-2409.01	1947.12	1715632.55	14348549.42	39°30'44.0252"N	80°43'59.9365"W	3097.52	141.053	0.47	-0.13	0.46	
10784.00	89.660	159.080	7108.31	3002.87	-2497.02	1980.13	1715665.54	14348461.44	39°30'43.1544"N	80°43'59.5186"W	3186.85	141.586	0.77	0.10	-0.77	
10879.00	89.380	160.550	7109.11	3097.83	-2586.18	2012.91	1715698.31	14348372.32	39°30'42.2723"N	80°43'59.1038"W	3277.21	142.105	1.58	-0.29	1.55	
10973.00	87.720	158.790	7111.49	3191.77	-2674.29	2045.55	1715730.94	14348284.24	39°30'41.4005"N	80°43'58.6906"W	3366.92	142.588	2.57	-1.77	-1.87	
11067.00	89.510	161.700	7113.76	3285.71	-2762.72	2077.31	1715762.68	14348195.85	39°30'40.5256"N	80°43'58.2888"W	3456.57	143.060	3.63	1.90	3.10	
11161.00	89.410	161.050	7114.65	3379.71	-2851.80	2107.33	1715792.69	14348106.81	39°30'39.6444"N	80°43'57.9092"W	3545.92	143.538	0.70	-0.11	-0.69	
11256.00	89.510	160.200	7115.54	3474.70	-2941.41	2138.84	1715824.19	14348017.23	39°30'38.7577"N	80°43'57.5105"W	3636.83	143.977	0.90	0.11	-0.89	
11350.00	89.540	161.780	7116.32	3568.69	-3030.28	2169.46	1715854.80	14347928.40	39°30'37.8785"N	80°43'57.1232"W	3726.81	144.400	1.68	0.03	1.68	
11444.00	89.480	162.130	7117.12	3662.68	-3119.65	2198.57	1715883.90	14347839.06	39°30'36.9944"N	80°43'56.7551"W	3816.54	144.826	0.38	-0.06	0.37	
11538.00	89.780	160.480	7117.73	3756.67	-3208.69	2228.70	1715914.02	14347750.06	39°30'36.1135"N	80°43'56.3741"W	3906.76	145.217	1.78	0.32	-1.76	
11632.00	89.540	161.150	7118.29	3850.67	-3297.46	2259.59	1715944.90	14347661.32	39°30'35.2352"N	80°43'55.9834"W	3997.38	145.579	0.76	-0.26	0.71	
11727.00	89.600	161.300	7119.00	3945.67	-3387.41	2290.17	1715975.46	14347571.41	39°30'34.3454"N	80°43'55.5967"W	4088.94	145.938	0.17	0.06	0.16	
11821.00	89.420	161.200	7119.81	4039.66	-3476.42	2320.38	1716005.66	14347482.44	39°30'33.4648"N	80°43'55.2146"W	4179.67	146.278	0.22	-0.19	-0.11	
11915.00	90.400	161.580	7119.95	4133.66	-3565.50	2350.38	1716035.65	14347393.39	39°30'32.5835"N	80°43'54.8352"W	4270.49	146.607	1.12	1.04	0.40	
12009.00	89.630	160.930	7119.93	4227.66	-3654.51	2380.59	1716065.84	14347304.42	39°30'31.7029"N	80°43'54.4532"W	4361.50	146.919	1.07	-0.82	-0.69	
12103.00	89.720	161.230	7120.46	4321.66	-3743.43	2411.06	1716096.31	14347215.53	39°30'30.8231"N	80°43'54.0678"W	4452.70	147.215	0.33	0.10	0.32	
12197.00	89.780	161.690	7120.87	4415.65	-3832.55	2440.95	1716126.19	14347126.45	39°30'29.9415"N	80°43'53.6898"W	4543.86	147.507	0.49	0.06	0.49	
12291.00	89.690	161.420	7121.31	4509.65	-3921.72	2470.69	1716155.92	14347037.31	39°30'29.0593"N	80°43'53.3138"W	4635.11	147.789	0.30	-0.10	-0.29	
12386.00	88.490	158.650	7122.82	4604.61	-4010.99	2503.12	1716188.33	14346948.08	39°30'28.1761"N	80°43'52.9034"W	4727.97	148.033	3.18	-1.26	-2.92	
12480.00	89.230	157.370	7124.69	4698.45	-4098.13	2538.31	1716223.51	14346860.97	39°30'27.3138"N	80°43'52.4578"W	4820.55	148.227	1.57	0.79	-1.36	
12574.00	89.850	159.310	7125.44	4792.33	-4185.49	2573.01	1716258.19	14346773.65	39°30'26.4494"N	80°43'52.0185"W	4913.11	148.419	2.17	0.66	2.06	
12668.00	90.680	161.590	7125.01	4886.31	-4274.06	2604.46	1716289.63	14346685.11	39°30'25.5731"N	80°43'51.6206"W	5005.08	148.643	2.58	0.88	2.43	
12762.00	88.030	160.910	7126.06	4980.30	-4363.06	2634.67	1716319.83	14346596.15	39°30'24.6926"N	80°43'51.2386"W	5096.84	148.874	2.91	-2.82	-0.72	
12856.00	90.550	162.780	7127.23	5074.27	-4452.36	2663.95	1716349.10	14346506.88	39°30'23.8091"N	80°43'50.8684"W	5188.46	149.107	3.34	2.68	1.99	
12951.00	90.520	162.920	7126.34	5169.23	-4543.13	2691.96	1716377.10	14346416.15	39°30'22.9112"N	80°43'50.5145"W	5280.79	149.352	0.15	-0.03	0.15	
13045.00	90.340	163.220	7125.64	5263.17	-4633.06	2719.34	1716404.46	14346326.26	39°30'22.0216"N	80°43'50.1687"W	5372.15	149.590	0.37	-0.19	0.32	
13139.00	89.660	161.600	7125.64	5357.14	-4722.66	2747.74	1716432.85	14346236.69	39°30'21.1352"N	80°43'49.8097"W	5463.84	149.808	1.87	-0.72	-1.72	
13233.00	90.770	162.840	7125.28	5451.12	-4812.16	2776.44	1716461.55	14346147.22	39°30'20.2497"N	80°43'49.4470"W	5555.68	150.017	1.77	1.18	1.32	
13328.00	90.580	162.540	7124.17	5546.08	-4902.86	2804.71	1716489.80	14346056.57	39°30'19.3526"N	80°43'49.0898"W	5648.40	150.228	0.37	-0.20	-0.32	

RECEIVED
Office of Oil and Gas
AUG 14 2025
WV Department of
Environmental Protection



Actual Wellpath Report

Skewed Unit 2H AWP Proj: 21688'
Page 7 of 11



REFERENCE WELLPATH IDENTIFICATION

Operator	ANTERO RESOURCES CORPORATION	Well	Skewed Unit 2H
Field	Wetzel	API	47-103-03678-0000
Facility	Lincoln Pad	Wellbore	Skewed Unit 2H AWB
Slot	Slot D		

WELLPATH DATA (239 stations)

MD [ft]	Inclination [°]	Azimuth [°]	TVD [ft]	Vert Sect [ft]	North [ft]	East [ft]	Grid East [US ft]	Grid North [US ft]	Latitude	Longitude	Closure Dist [ft]	Closure Dir [°]	DLS ["/100ft]	Build Rate ["/100ft]	Turn Rate ["/100ft]	Comments
13422.00	90.830	163.020	7123.01	5640.04	-4992.63	2832.53	1716517.61	14345966.82	39°30'18.4644"N	80°43'48.7383"W	5740.18	150.432	0.58	0.27	0.51	
13516.00	90.550	162.270	7121.88	5734.00	-5082.35	2860.57	1716545.64	14345877.14	39°30'17.5770"N	80°43'48.3840"W	5832.08	150.627	0.85	-0.30	-0.80	
13611.00	90.770	162.950	7120.78	5828.96	-5173.00	2888.96	1716574.02	14345786.53	39°30'16.6802"N	80°43'48.0253"W	5925.03	150.818	0.75	0.23	0.72	
13705.00	90.740	163.270	7119.54	5922.90	-5262.94	2916.27	1716601.32	14345696.63	39°30'15.7905"N	80°43'47.6803"W	6016.90	151.009	0.34	-0.03	0.34	
13799.00	90.710	162.760	7118.35	6016.84	-5352.83	2943.73	1716628.76	14345606.77	39°30'14.9012"N	80°43'47.3335"W	6108.87	151.192	0.54	-0.03	-0.54	
13893.00	90.280	162.380	7117.54	6110.81	-5442.51	2971.88	1716656.91	14345517.13	39°30'14.0141"N	80°43'46.9777"W	6201.05	151.363	0.61	-0.46	-0.40	
13987.00	90.180	162.560	7117.16	6204.78	-5532.14	3000.20	1716685.21	14345427.53	39°30'13.1274"N	80°43'46.6200"W	6293.31	151.528	0.22	-0.11	0.19	
14082.00	90.250	162.420	7116.81	6299.75	-5622.74	3028.78	1716713.78	14345336.97	39°30'12.2311"N	80°43'46.2588"W	6386.60	151.690	0.16	0.07	-0.15	
14176.00	90.180	162.370	7116.46	6393.73	-5712.34	3057.21	1716742.20	14345247.40	39°30'11.3447"N	80°43'45.8995"W	6478.99	151.845	0.09	-0.07	-0.05	
14270.00	89.820	162.700	7116.46	6487.70	-5802.00	3085.42	1716770.40	14345157.77	39°30'10.4577"N	80°43'45.5431"W	6571.38	151.997	0.52	-0.38	0.35	
14364.00	89.970	163.090	7116.63	6581.66	-5891.85	3113.07	1716798.04	14345067.97	39°30'9.5690"N	80°43'45.1938"W	6663.71	152.149	0.44	0.16	0.41	
14458.00	89.820	162.720	7116.80	6675.61	-5981.69	3140.70	1716825.66	14344978.16	39°30'8.6802"N	80°43'44.8448"W	6756.08	152.298	0.42	-0.16	-0.39	
14552.00	88.860	161.250	7117.88	6769.59	-6071.07	3169.77	1716854.71	14344888.81	39°30'7.7959"N	80°43'44.4774"W	6848.75	152.430	1.87	-1.02	-1.56	
14647.00	89.050	162.690	7119.62	6864.57	-6161.39	3199.17	1716884.10	14344798.53	39°30'6.9024"N	80°43'44.1058"W	6942.44	152.560	1.53	0.20	1.52	
14741.00	89.630	160.750	7120.70	6958.55	-6250.64	3228.65	1716913.57	14344709.32	39°30'6.0195"N	80°43'43.7331"W	7035.24	152.682	2.15	0.62	-2.06	
14835.00	89.200	160.950	7121.66	7052.54	-6339.43	3259.48	1716944.39	14344620.56	39°30'5.1410"N	80°43'43.3432"W	7128.30	152.790	0.50	-0.46	0.21	
14929.00	89.350	160.160	7122.85	7146.53	-6428.06	3290.77	1716975.67	14344531.96	39°30'4.2641"N	80°43'42.9474"W	7221.44	152.890	0.86	0.16	-0.84	
15023.00	90.000	161.580	7123.38	7240.52	-6516.87	3321.57	1717006.46	14344443.19	39°30'3.3855"N	80°43'42.5579"W	7314.53	152.993	1.66	0.69	1.51	
15118.00	89.850	160.770	7123.51	7335.52	-6606.78	3352.23	1717037.10	14344353.31	39°30'2.4959"N	80°43'42.1703"W	7408.58	153.097	0.87	-0.16	-0.85	
15212.00	90.280	161.260	7123.40	7429.52	-6695.67	3382.81	1717067.67	14344264.46	39°30'1.6165"N	80°43'41.7836"W	7501.69	153.196	0.69	0.46	0.52	
15306.00	89.820	160.650	7123.32	7523.52	-6784.52	3413.48	1717098.33	14344175.64	39°30'0.7374"N	80°43'41.3958"W	7594.84	153.292	0.81	-0.49	-0.65	
15401.00	89.540	159.890	7123.85	7618.51	-6873.94	3445.55	1717130.39	14344086.26	39°29'59.8527"N	80°43'40.9901"W	7689.14	153.378	0.85	-0.29	-0.80	
15495.00	89.850	160.770	7124.35	7712.50	-6962.46	3477.19	1717162.02	14343997.78	39°29'58.9769"N	80°43'40.5899"W	7782.46	153.462	0.99	0.33	0.94	
15589.00	89.780	160.620	7124.65	7806.49	-7051.17	3508.27	1717193.08	14343909.10	39°29'58.0992"N	80°43'40.1969"W	7875.72	153.548	0.18	-0.07	-0.16	
15683.00	89.940	160.580	7124.88	7900.49	-7139.83	3539.49	1717224.29	14343820.47	39°29'57.2220"N	80°43'39.8020"W	7969.02	153.631	0.18	0.17	-0.04	
15778.00	89.820	160.310	7125.08	7995.48	-7229.35	3571.29	1717256.07	14343730.99	39°29'56.3363"N	80°43'39.3998"W	8063.35	153.711	0.31	-0.13	-0.28	
15872.00	90.000	160.760	7125.23	8089.47	-7317.98	3602.61	1717287.39	14343642.40	39°29'55.4594"N	80°43'39.0037"W	8156.69	153.789	0.52	0.19	0.48	
15966.00	89.750	160.800	7125.43	8183.47	-7406.74	3633.56	1717318.32	14343553.67	39°29'54.5812"N	80°43'38.6124"W	8250.00	153.869	0.27	-0.27	0.04	
16061.00	90.120	160.640	7125.54	8278.47	-7496.41	3664.92	1717349.67	14343464.03	39°29'53.6941"N	80°43'38.2157"W	8344.33	153.946	0.42	0.39	-0.17	
16155.00	90.030	160.930	7125.42	8372.47	-7585.18	3695.86	1717380.60	14343375.31	39°29'52.8159"N	80°43'37.8245"W	8437.67	154.022	0.32	-0.10	0.31	

RECEIVED
Office of Oil and Gas
AUG 14 2025
WV Department of
Environmental Protection



Actual Wellpath Report

Skewed Unit 2H AWP Proj: 21688'

Page 8 of 11



REFERENCE WELLPATH IDENTIFICATION

Operator	ANTERO RESOURCES CORPORATION	Well	Skewed Unit 2H
Field	Wetzel	API	47-103-03678-0000
Facility	Lincoln Pad	Wellbore	Skewed Unit 2H AWB
Slot	Slot D		

WELLPATH DATA (239 stations)

MD [ft]	Inclination [°]	Azimuth [°]	TVD [ft]	Vert Sect [ft]	North [ft]	East [ft]	Grid East [US ft]	Grid North [US ft]	Latitude	Longitude	Closure Dist [ft]	Closure Dir [°]	DLS [°/100ft]	Build Rate [°/100ft]	Turn Rate [°/100ft]	Comments
16249.00	90.000	160.400	7125.39	8466.46	-7673.87	3726.98	1717411.71	14343286.64	39°29'51.9383"N	80°43'37.4309"W	8531.05	154.095	0.56	-0.03	-0.56	
16344.00	90.000	161.160	7125.39	8561.46	-7763.58	3758.26	1717442.97	14343196.97	39°29'51.0508"N	80°43'37.0354"W	8625.41	154.169	0.80	0.00	0.80	
16438.00	89.690	161.010	7125.65	8655.46	-7852.50	3788.73	1717473.43	14343108.09	39°29'50.1710"N	80°43'36.6502"W	8718.73	154.243	0.37	-0.33	-0.16	
16532.00	89.720	160.290	7126.13	8749.46	-7941.19	3819.87	1717504.56	14343019.43	39°29'49.2935"N	80°43'36.2563"W	8812.15	154.312	0.77	0.03	-0.77	
16626.00	89.750	160.600	7126.57	8843.45	-8029.77	3851.34	1717536.01	14342930.89	39°29'48.4172"N	80°43'35.8584"W	8905.61	154.376	0.33	0.03	0.33	
16721.00	89.780	160.790	7126.96	8938.44	-8119.43	3882.74	1717567.40	14342841.27	39°29'47.5301"N	80°43'35.4612"W	9000.04	154.443	0.20	0.03	0.20	
16815.00	89.780	160.180	7127.32	9032.44	-8208.02	3914.14	1717598.79	14342752.70	39°29'46.6535"N	80°43'35.0641"W	9093.52	154.505	0.65	0.00	-0.65	
16909.00	89.260	158.790	7128.10	9126.39	-8296.06	3947.08	1717631.72	14342664.71	39°29'45.7825"N	80°43'34.6474"W	9187.17	154.556	1.58	-0.55	-1.48	
17004.00	89.660	160.150	7129.00	9221.34	-8385.02	3980.40	1717665.02	14342575.78	39°29'44.9022"N	80°43'34.2259"W	9281.81	154.606	1.49	0.42	1.43	
17098.00	89.600	160.560	7129.61	9315.33	-8473.54	4012.00	1717696.61	14342487.29	39°29'44.0264"N	80°43'33.8262"W	9375.34	154.664	0.44	-0.06	0.44	
17192.00	88.860	161.110	7130.87	9409.32	-8562.33	4042.85	1717727.45	14342398.54	39°29'43.1480"N	80°43'33.4360"W	9468.80	154.725	0.98	-0.79	0.59	
17287.00	89.290	160.820	7132.40	9504.31	-8652.12	4073.83	1717758.42	14342308.79	39°29'42.2596"N	80°43'33.0443"W	9563.23	154.787	0.55	0.45	-0.31	
17380.00	89.510	160.710	7133.38	9597.30	-8739.92	4104.47	1717789.05	14342221.02	39°29'41.3909"N	80°43'32.6570"W	9655.72	154.844	0.26	0.24	-0.12	
17474.00	89.230	161.050	7134.41	9691.29	-8828.73	4135.26	1717819.82	14342132.24	39°29'40.5122"N	80°43'32.2677"W	9749.20	154.902	0.47	-0.30	0.36	
17568.00	88.980	160.210	7135.88	9785.28	-8917.40	4166.43	1717850.98	14342043.61	39°29'39.6350"N	80°43'31.8735"W	9842.72	154.957	0.93	-0.27	-0.89	
17662.00	89.660	160.920	7136.99	9879.26	-9006.04	4197.70	1717882.24	14341955.01	39°29'38.7580"N	80°43'31.4780"W	9936.27	155.010	1.05	0.72	0.76	
17756.00	91.110	160.990	7136.36	9973.26	-9094.89	4228.38	1717912.90	14341866.19	39°29'37.8789"N	80°43'31.0903"W	10029.76	155.065	1.54	1.54	0.07	
17851.00	89.110	160.320	7136.18	10068.25	-9184.52	4259.84	1717944.36	14341776.60	39°29'36.9921"N	80°43'30.6924"W	10124.31	155.118	2.22	-2.11	-0.71	
17945.00	89.230	160.460	7137.54	10162.23	-9273.06	4291.39	1717975.89	14341688.10	39°29'36.1161"N	80°43'30.2934"W	10217.90	155.166	0.20	0.13	0.15	
18039.00	89.260	161.840	7138.78	10256.22	-9362.00	4321.76	1718006.25	14341599.18	39°29'35.2361"N	80°43'29.9096"W	10311.39	155.221	1.47	0.03	1.47	
18134.00	89.510	162.870	7139.80	10351.19	-9452.53	4350.55	1718035.03	14341508.69	39°29'34.3406"N	80°43'29.5458"W	10405.65	155.286	1.12	0.26	1.08	
18228.00	89.820	161.390	7140.35	10445.18	-9541.99	4379.39	1718063.86	14341419.27	39°29'33.4555"N	80°43'29.1814"W	10498.98	155.347	1.61	0.33	-1.57	
18323.00	91.230	163.980	7139.48	10540.13	-9632.67	4407.66	1718092.12	14341328.62	39°29'32.5584"N	80°43'28.8243"W	10593.20	155.412	3.10	1.48	2.73	
18416.00	89.820	161.580	7138.63	10633.08	-9721.49	4435.19	1718119.64	14341239.84	39°29'31.6798"N	80°43'28.4766"W	10685.42	155.476	2.99	-1.52	-2.58	
18510.00	89.970	163.030	7138.80	10727.05	-9811.04	4463.76	1718148.20	14341150.33	39°29'30.7939"N	80°43'28.1157"W	10778.76	155.536	1.55	0.16	1.54	
18605.00	89.970	161.540	7138.85	10822.03	-9901.53	4492.67	1718177.09	14341059.87	39°29'29.8986"N	80°43'27.7505"W	10873.10	155.595	1.57	0.00	-1.57	
18699.00	89.850	161.240	7139.00	10916.03	-9990.62	4522.67	1718207.08	14340970.82	39°29'29.0173"N	80°43'27.3714"W	10966.63	155.644	0.34	-0.13	-0.32	
18794.00	89.880	160.990	7139.22	11011.03	-10080.50	4553.41	1718237.81	14340880.97	39°29'28.1280"N	80°43'26.9827"W	11061.20	155.691	0.27	0.03	-0.26	
18888.00	90.060	161.430	7139.27	11105.03	-10169.49	4583.69	1718268.08	14340792.01	39°29'27.2475"N	80°43'26.6000"W	11154.77	155.737	0.51	0.19	0.47	
18982.00	90.060	161.680	7139.17	11199.03	-10258.66	4613.43	1718297.81	14340702.88	39°29'26.3653"N	80°43'26.2241"W	11248.29	155.786	0.27	0.00	0.27	

RECEIVED
 Office of Oil and Gas
 WV Department of
 Environmental Protection
 AUG 14 2025



RECEIVED
Office of Oil and Gas

AUG 14 2025

WV Department of
Environmental Protection

Actual Wellpath Report

Skewed Unit 2H AWP Proj: 21688'

Page 9 of 11



REFERENCE WELLPATH IDENTIFICATION				
Operator	ANTERO RESOURCES CORPORATION		Well	Skewed Unit 2H
Field	Wetzel		API	47-103-03678-0000
Facility	Lincoln Pad		Wellbore	Skewed Unit 2H AWB
Slot	Slot D			

WELLPATH DATA (239 stations) † = interpolated, ‡ = extrapolated station																
MD [ft]	Inclination [°]	Azimuth [°]	TVD [ft]	Vert Sect [ft]	North [ft]	East [ft]	Grid East [US ft]	Grid North [US ft]	Latitude	Longitude	Closure Dist [ft]	Closure Dir [°]	DLS [°/100ft]	Build Rate [°/100ft]	Turn Rate [°/100ft]	Comments
19076.00	90.000	161.480	7139.12	11293.03	-10347.85	4643.14	1718327.50	14340613.73	39°29'25.4830"N	80°43'25.8488"W	11341.81	155.834	0.22	-0.06	-0.21	
19170.00	90.180	161.770	7138.97	11387.02	-10437.05	4672.77	1718357.12	14340524.56	39°29'24.6004"N	80°43'25.4743"W	11435.33	155.881	0.36	0.19	0.31	
19264.00	89.380	160.870	7139.34	11481.02	-10526.10	4702.87	1718387.21	14340435.55	39°29'23.7194"N	80°43'25.0938"W	11528.91	155.926	1.28	-0.85	-0.96	
19358.00	89.910	161.420	7139.92	11575.02	-10615.05	4733.25	1718417.58	14340346.63	39°29'22.8394"N	80°43'24.7098"W	11622.52	155.968	0.81	0.56	0.59	
19452.00	90.000	161.310	7139.99	11669.02	-10704.13	4763.29	1718447.60	14340257.59	39°29'21.9581"N	80°43'24.3302"W	11716.11	156.011	0.15	0.10	-0.12	
19546.00	90.460	161.890	7139.61	11763.01	-10793.27	4793.11	1718477.42	14340168.49	39°29'21.0762"N	80°43'23.9533"W	11809.68	156.055	0.63	0.49	0.40	
19641.00	88.860	160.030	7140.18	11858.00	-10883.01	4824.26	1718508.55	14340078.78	39°29'20.1883"N	80°43'23.5595"W	11904.34	156.093	2.43	-1.68	-1.75	
19736.00	89.850	161.730	7141.25	11952.99	-10972.76	4855.37	1718539.65	14339989.07	39°29'19.3004"N	80°43'23.1662"W	11999.00	156.131	2.07	1.04	1.79	
19830.00	89.910	161.650	7141.44	12046.99	-11062.00	4884.90	1718569.17	14339899.86	39°29'18.4175"N	80°43'22.7930"W	12092.56	156.174	0.11	0.06	-0.09	
19924.00	89.880	160.750	7141.62	12140.99	-11150.98	4915.20	1718599.45	14339810.91	39°29'17.5371"N	80°43'22.4102"W	12186.20	156.213	0.96	-0.03	-0.96	
20018.00	90.000	161.910	7141.72	12234.98	-11240.03	4945.29	1718629.53	14339721.90	39°29'16.6560"N	80°43'22.0299"W	12279.83	156.252	1.24	0.13	1.23	
20113.00	90.030	161.750	7141.69	12329.98	-11330.30	4974.91	1718659.14	14339631.67	39°29'15.7630"N	80°43'21.6556"W	12374.38	156.295	0.17	0.03	-0.17	
20207.00	90.280	161.380	7141.44	12423.98	-11419.47	5004.64	1718688.85	14339542.53	39°29'14.8808"N	80°43'21.2799"W	12467.99	156.334	0.48	0.27	-0.39	
20301.00	90.120	161.460	7141.11	12517.97	-11508.57	5034.59	1718718.79	14339453.46	39°29'13.9993"N	80°43'20.9014"W	12561.62	156.372	0.19	-0.17	0.09	
20396.00	90.220	161.320	7140.83	12612.97	-11598.60	5064.90	1718749.10	14339363.47	39°29'13.1085"N	80°43'20.5183"W	12656.26	156.410	0.18	0.11	-0.15	
20490.00	90.150	161.640	7140.52	12706.97	-11687.74	5094.76	1718778.94	14339274.37	39°29'12.2267"N	80°43'20.1410"W	12749.89	156.447	0.35	-0.07	0.34	
20584.00	89.970	161.760	7140.42	12800.97	-11776.98	5124.28	1718808.45	14339185.16	39°29'11.3438"N	80°43'19.7681"W	12843.50	156.486	0.23	-0.19	0.13	
20679.00	90.000	161.520	7140.45	12895.96	-11867.15	5154.20	1718838.36	14339095.03	39°29'10.4517"N	80°43'19.3900"W	12938.12	156.523	0.25	0.03	-0.25	
20773.00	89.140	160.740	7141.15	12989.96	-11956.09	5184.60	1718868.75	14339006.12	39°29'9.5717"N	80°43'19.0057"W	13031.81	156.557	1.24	-0.91	-0.83	
20868.00	90.120	161.240	7141.77	13084.95	-12045.91	5215.54	1718899.68	14338916.34	39°29'8.6831"N	80°43'18.6146"W	13126.53	156.589	1.16	1.03	0.53	
20962.00	90.090	161.510	7141.60	13178.95	-12134.98	5245.56	1718929.69	14338827.30	39°29'7.8018"N	80°43'18.2352"W	13220.20	156.623	0.29	-0.03	0.29	
21056.00	89.780	161.220	7141.70	13272.95	-12224.05	5275.60	1718959.71	14338738.27	39°29'6.9206"N	80°43'17.8556"W	13313.88	156.656	0.45	-0.33	-0.31	
21150.00	90.280	162.080	7141.65	13366.95	-12313.27	5305.19	1718989.29	14338649.08	39°29'6.0379"N	80°43'17.4817"W	13407.53	156.691	1.06	0.53	0.91	
21340.00	89.880	161.440	7141.39	13556.93	-12493.72	5364.66	1719048.74	14338468.70	39°29'4.2526"N	80°43'16.7304"W	13596.79	156.762	0.40	-0.21	-0.34	
21434.00	90.060	161.850	7141.44	13650.93	-12582.94	5394.26	1719078.33	14338379.52	39°29'3.3699"N	80°43'16.3564"W	13690.45	156.795	0.48	0.19	0.44	
21528.00	89.910	161.230	7141.46	13744.93	-12672.10	5424.03	1719108.08	14338290.39	39°29'2.4878"N	80°43'15.9803"W	13784.13	156.828	0.68	-0.16	-0.66	
21623.00	90.030	161.390	7141.51	13839.93	-12762.09	5454.47	1719138.51	14338200.44	39°29'1.5975"N	80°43'15.5956"W	13878.84	156.858	0.21	0.13	0.17	
21663.00	90.060	161.620	7141.48	13879.93	-12800.03	5467.16	1719151.20	14338162.52	39°29'1.2222"N	80°43'15.4353"W	13918.71	156.872	0.58	0.07	0.57	
21688.00	90.060	161.620	7141.45	13904.93	-12823.75	5475.04	1719159.08	14338138.80	39°29'0.9875"N	80°43'15.3357"W	13943.63	156.880	0.00	0.00	0.00	Projected MD at TD: 21688'

DIRECTIONAL DIFFICULTY INDEX			
Directional Difficulty Index @ TD = 7.15		Reference: IADC/SPE 59196	
Values	Wellpath characterized as:	Values	Wellpath characterized as:
< 6.0	Relatively short or simple profiles with low tortuosity	6.4-6.8	Longer with relatively tortuous well paths
< 6.0-6.4	Shorter with high tortuosity or longer with lower tortuosity	> 6.8	Long tortuous profiles, high degree of difficulty

HOLE & CASING SECTIONS - Ref Wellbore: Skewed Unit 2H AWB Ref Wellpath: Skewed Unit 2H AWP Proj: 21688'									
String/Diameter	Start MD [ft]	End MD [ft]	Interval [ft]	Start TVD [ft]	End TVD [ft]	Start N/S [ft]	Start E/W [ft]	End N/S [ft]	End E/W [ft]
20in Conductor	25.50	125.50	100.00	25.50	125.50	0.00	0.00	0.26	-0.01
17.5in Open Hole	125.50	492.00	366.50	125.50	492.00	0.26	-0.01	1.57	0.54
13.375in Casing Surface	25.50	472.00	446.50	25.50	472.00	0.00	0.00	1.53	0.49

HOLE & CASING SECTIONS - Ref Wellbore: Skewed Unit 2H AWB Ref Wellpath: Skewed Unit 2H AWP Proj: 21688'									
String/Diameter	Start MD [ft]	End MD [ft]	Interval [ft]	Start TVD [ft]	End TVD [ft]	Start N/S [ft]	Start E/W [ft]	End N/S [ft]	End E/W [ft]
12.25in Open Hole	492.00	3613.00	3121.00	492.00	3552.43	1.57	0.54	483.35	265.04
9.625in Casing Intermediate	25.50	3583.00	3557.50	25.50	3523.07	0.00	0.00	477.83	262.30
8.75in Open Hole	3613.00	6318.00	2705.00	3552.43	6171.48	483.35	265.04	1063.36	607.70
8.5in Open Hole	6318.00	21688.00	15370.00	6171.48	7141.45	1063.36	607.70	-12823.75	5475.04
5.5in Casing Production	25.50	21668.00	21642.50	25.50	7141.47	0.00	0.00	-12804.77	5468.74

RECEIVED
 Office of Oil and Gas
 WV Department of
 Environmental Protection
 AUG 14 2025



Actual Wellpath Report

Skewed Unit 2H AWP Proj: 21688'

Page 10 of 11



REFERENCE WELLPATH IDENTIFICATION

Operator	ANTERO RESOURCES CORPORATION	Well	Skewed Unit 2H
Field	Wetzel	API	47-103-03678-0000
Facility	Lincoln Pad	Wellbore	Skewed Unit 2H AWB
Slot	Slot D		

TARGETS

Name	TVD [ft]	North [ft]	East [ft]	Grid East [US ft]	Grid North [US ft]	Latitude	Longitude	Shape
Skewed Unit 2H POE Rev-2	7051.00	644.76	891.88	1714577.73	14351601.98	39°31'14.2372"N	80°44'13.2864"W	point
Skewed Unit 2H BHL Rev-2	7078.00	-12829.37	5491.50	1719175.53	14338133.19	39°29'0.9315"N	80°43'15.1259"W	point
Skewed Unit 2H LP Rev-2	7078.00	460.40	954.81	1714640.64	14351417.70	39°31'12.4133"N	80°44'12.4902"W	point
Skewed Unit 2H 50' L/R Hard Line	7500.00	-6092.31	3191.69	1716876.63	14344867.58	39°30'7.5854"N	80°43'44.1985"W	rectangle

2D Rectangle 14237.6 x 100.

WELLPATH COMPOSITION - Ref Wellbore: Skewed Unit 2H AWB Ref Wellpath: Skewed Unit 2H AWP Proj: 21688'

Start MD [ft]	End MD [ft]	Positional Uncertainty Model	Log Name/Comment	Wellbore	Survey Date
25.50	400.00	Gyrodata 2015 - GC+WIR+DPIPE	01 Gyrodata MS Gyro <17-1/2"> (100'-400')	Skewed Unit 2H AWB	12/4/2024
400.00	742.00	Gyrodata 2015 - GC+WIR+DPIPE	02 Gyrodata MS Gyro <12-1/4"> (400')(500'-742')	Skewed Unit 2H AWB	12/6/2024
742.00	3539.00	BH NaviTrak (2019) (Axial Corr+HRGM)	03 APS EM <12-1/4"> (742')(878'-3539')	Skewed Unit 2H AWB	12/4/2024
3539.00	6241.00	BH NaviTrak (2019) (Axial Corr+HRGM)	04 APS EM <8-3/4"> (3539')(3603'-6241')	Skewed Unit 2H AWB	12/6/2024
6241.00	21688.00	BH AutoTrak Curve/eXpress (2019) (HRGM, Short spacing)	05 BH Lucida <8-1/2"> (6241')(6295'-21663')	Skewed Unit 2H AWB	12/6/2024

RECEIVED
 Office of Oil and Gas
 WV Department of
 Environmental Protection
 AUG 14 2025



Actual Wellpath Report
 Skewed Unit 2H AWP Proj: 21688'
 Page 11 of 11



REFERENCE WELLPATH IDENTIFICATION

Operator	ANTERO RESOURCES CORPORATION	Well	Skewed Unit 2H
Field	Wetzel	API	47-103-03678-0000
Facility	Lincoln Pad	Wellbore	Skewed Unit 2H AWB
Slot	Slot D		

COMMENTS

Wellpath general comments

API: 47-103-03678-0000
 BH Job #: 112482513
 Rig: H&P 317
 Duration: 12/5/2024-12/11/2024
 Gyrodata MS Gyro <17-1/2"> (100'-400')
 Gyrodata MS Gyro <12-1/4"> (400')(500'-742')
 APS EM <12-1/4"> (742')(878'-3539')
 APS EM <8-3/4"> (3539')(3603'-6241')
 BH Lucida <8-1/2"> (6241')(6295'-21663')
 Sycamore: 6879' MD
 Middlesex: 7037' MD
 Burkett: 7190' MD
 Tully: 7251' MD
 Marcellus POE: 7453' MD
 Projected MD at TD: 21688'

RECEIVED
 Office of Oil and Gas
 AUG 14 2025
 WV Department of
 Environmental Protection