

4377
32'30"
4376
4375
4374
4373
39°30'

339 32'30" 40 41 80°30'



ROAD CLASSIFICATION

- Heavy-duty —————
- Med um-duty ————
- Light-duty —————
- Unimproved dirt - - - - -

State Route



RECEIVED
Office Of Oil and Gas

NOV 12 2024

WV Department of Environmental Protection

BIG RUN, W. VA.
SE/4 LITTLETON 15' QUADRANGLE
N3930—W8030/7.5

1960

Revisions shown in purple compiled in cooperation with State of West Virginia agencies from aerial photographs
Big Run; WV Scale: 1" = 0.379Mi 610M 2,000Ft, 1 Mi = 2.640" , 1 cm = 240M

11/22/2024


(WALLACE)
4562 N.W.

Well# 7307
BIG RUN WV 7.5 Quad
Scale: 1" = 2000'

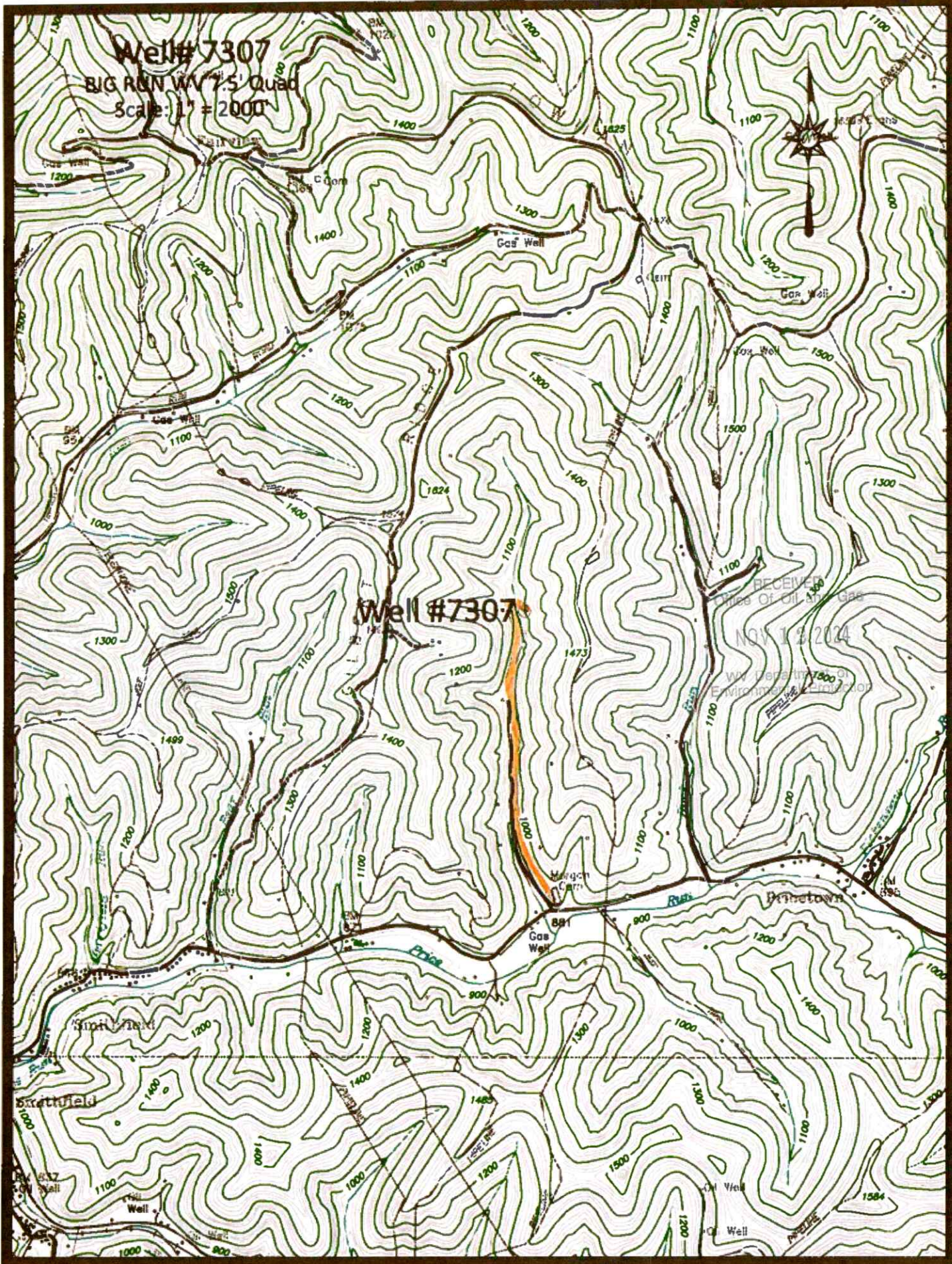


Well #7307

RECEIVED
Bureau of Environmental Protection
NOV 13 2024

 Access Road

11/22/2024



Well# 7307
BIG RUN WV 7.5' Quad
Scale: 1" = 500'

1624



RECEIVED
Office Of Oil and Gas
NOV 12 2024
WV Department of
Environmental Protection

1100


1400

Well# 7307

1473

1200



 Access Road

WW-7
8-30-06



West Virginia Department of Environmental Protection
Office of Oil and Gas

WELL LOCATION FORM: GPS

API: 47-103-72340 WELL NO.: 7307

FARM NAME: M GUMP 4

RESPONSIBLE PARTY NAME: WEST VIRGINIA LAND RESOURCES INC.

COUNTY: WETZEL DISTRICT: GRANT

QUADRANGLE: BIG RUN WV

SURFACE OWNER: DALLISON LUMBER INC

ROYALTY OWNER: _____

UTM GPS NORTHING: 4,374,589 m

UTM GPS EASTING: 540,292 m GPS ELEVATION: 331 m

The Responsible Party named above has chosen to submit GPS coordinates in lieu of preparing a new well location plat for a plugging permit or assigned API number on the above well. The Office of Oil and Gas will not accept GPS coordinates that do not meet the following requirements:

- Datum: NAD 1983, Zone: 17 North, Coordinate Units: meters, Altitude: height above mean sea level (MSL) – meters.
- Accuracy to Datum – 3.05 meters
- Data Collection Method:
Survey grade GPS x : Post Processed Differential X

Real-Time Differential _____

Mapping Grade GPS _____ : Post Processed Differential _____

Real-Time Differential _____

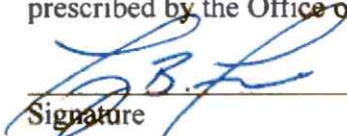
RECEIVED
Office Of Oil and Gas

NOV 12 2024

WV Department of
Environmental Protection

4. Letter size copy of the topography map showing the well location.

I the undersigned, hereby certify this data is correct to the best of my knowledge and belief and shows all the information required by law and the regulations issued and prescribed by the Office of Oil and Gas.


Signature

PS 2002
Title

OCTOBER 25, 2024
Date