

State of West Virginia
Department of Environmental Protection - Office of Oil and Gas
Well Operator's Report of Well Work

RECEIVED
Office of Oil and Gas
DEC 11 2025
WV Department of
Environmental Protection

API 47-103-03695 County Wetzel District Green
Quad Pine Grove 7.5' Pad Name Cedar Field/Pool Name ----
Farm name Dallison Lumber Company Well Number Duke Unit 2H
Operator (as registered with the OOG) Antero Resources Corporation
Address 1615 Wynkoop Street City Denver State CO Zip 80202

As Drilled location NAD 83/UTM Attach an as-drilled plat, profile view, and deviation survey
Top hole Northing 4379831.930m Easting 524670.163m
Landing Point of Curve Northing 4379607.32m Easting 524346.15m
Bottom Hole Northing 4384485.669m Easting 522689.178m

Elevation (ft) 1,248' GL Type of Well New Existing Type of Report Interim Final
Permit Type Deviated Horizontal Horizontal 6A Vertical Depth Type Deep Shallow
Type of Operation Convert Deepen Drill Plug Back Redrilling Rework Stimulate
Well Type Brine Disposal CBM Gas Oil Secondary Recovery Solution Mining Storage Other _____
Type of Completion Single Multiple Fluids Produced Brine Gas NGL Oil Other _____
Drilled with Cable Rotary

Drilling Media Surface hole Air Mud Fresh Water Intermediate hole Air Mud Fresh Water Brine
Production hole Air Mud Fresh Water Brine

Mud Type(s) and Additive(s)

Air - Foam & 4% KCL

Mud - Polymer

Date permit issued 12/20/2024 Date drilling commenced 1/30/2025 Date drilling ceased 4/20/2025
Date completion activities began 6/5/2025 Date completion activities ceased 8/12/2025
Verbal plugging (Y/N) N/A Date permission granted N/A Granted by N/A

Please note: Operator is required to submit a plugging application within 5 days of verbal permission to plug

Freshwater depth(s) ft 612' Open mine(s) (Y/N) depths No
Salt water depth(s) ft 2193' Void(s) encountered (Y/N) depths No
Coal depth(s) ft 1010' Cavern(s) encountered (Y/N) depths No
Is coal being mined in area (Y/N) No

Reviewed by:

03/20/2026

[Handwritten signature]
[Handwritten initials]

API 47- 103 - 03695 Farm name Dallison Lumber Company Well number Duke Unit 2H

CASING STRINGS	Hole Size	Casing Size	Depth	New or Used	Grade wt/ft	Basket Depth(s)	Did cement circulate (Y/ N) * Provide details below*
Conductor	28"	20"	125.5'	New	91.59#, J-55	N/A	Y
Surface	17-1/2"	13-3/8"	736'	New	54.5#, J-55	N/A	Y
Coal							
Intermediate 1	12-1/4"	9-5/8"	3419'	New	36#, P-110	N/A	Y
Intermediate 2							
Intermediate 3							
Production	8-3/4"/8-1/2"	5-1/2"	24317'	New	23#, P-110	N/A	Y
Tubing		2-3/8"	7204'		4.7#, P-110		
Packer type and depth set		N/A					

Comment Details _____

CEMENT DATA	Class/Type of Cement	Number of Sacks	Slurry wt (ppg)	Yield (ft ³ /sks)	Volume (ft ³)	Cement Top (MD)	WOC (hrs)
Conductor	Class A	190 sx	15.6	1.18	224	0'	8 Hrs.
Surface	Class A	800 sx	15.6	1.19	952	0'	8 Hrs.
Coal							
Intermediate 1	Class A	1152 sx	15.6	1.18	1359	0'	8 Hrs.
Intermediate 2							
Intermediate 3							
Production	Class H	5018 sx (Tail)	13.5 (Spacer), 15.2(Tail)	1.26 (Tail)	63223	~500' into Intermediate Casing	8 Hrs.
Tubing							

Drillers TD (ft) 24,317' MD, 7,067' TVD (BHL), 7,116' TVD (Deepest Point Drilled) Loggers TD (ft) 24,287' MD

Deepest formation penetrated Marcellus Plug back to (ft) N/A

Plug back procedure N/A

RECEIVED
Office of Oil and Gas

Kick off depth (ft) 6,425'

DEC 11 2025

Check all wireline logs run caliper density deviated/directional induction neutron resistivity gamma ray temperature sonic

WV Department of Environmental Protection

Well cored Yes No Conventional Sidewall Were cuttings collected Yes No

DESCRIBE THE CENTRALIZER PLACEMENT USED FOR EACH CASING STRING _____

Conductor - 0
Surface - 1 above guide shoe, 1 above insert float, 1 every 4th joint to surface
Intermediate - 1 above float joint, 1 above float collar, 1 every 4th joint to surface
Production - 1 above float joint, 1 below float collar, 1 every 3rd joint to top of cement

WAS WELL COMPLETED AS SHOT HOLE Yes No DETAILS _____

WAS WELL COMPLETED OPEN HOLE? Yes No DETAILS _____

WERE TRACERS USED Yes No TYPE OF TRACER(S) USED N/A

03/20/2026
2/10/20

API 47-103-03695 Farm Name William Wade Fletcher Well Number Duke Unit 2H

EXHIBIT 1

Stage No.	Perforation Date	Perforated from MD ft.	Perforated to MD ft.	Number of Perforations	Formations
1	6/5/2025	24261	24245	36	Marcellus
2	6/6/2025	24206.76984	24042.619	36	Marcellus
3	6/7/2025	24007.38889	23843.2381	36	Marcellus
4	6/7/2025	23808.00794	23643.8571	36	Marcellus
5	6/8/2025	23608.62698	23444.4762	36	Marcellus
6	6/8/2025	23409.24603	23245.0952	36	Marcellus
7	6/9/2025	23209.86508	23045.7143	36	Marcellus
8	6/9/2025	23010.48413	22846.3333	36	Marcellus
9	6/10/2025	22811.10317	22646.9524	36	Marcellus
10	6/10/2025	22611.72222	22447.5714	36	Marcellus
11	6/11/2025	22412.34127	22248.1905	36	Marcellus
12	6/11/2025	22212.96032	22048.8095	36	Marcellus
13	6/12/2025	22013.57937	21849.4286	36	Marcellus
14	6/12/2025	21814.19841	21650.0476	36	Marcellus
15	6/13/2025	21614.81746	21450.6667	36	Marcellus
16	6/14/2025	21415.43651	21251.2857	36	Marcellus
17	6/14/2025	21216.05556	21051.9048	36	Marcellus
18	6/15/2025	21016.6746	20852.5238	36	Marcellus
19	6/15/2025	20817.29365	20653.1429	36	Marcellus
20	6/16/2025	20617.9127	20453.7619	36	Marcellus
21	6/16/2025	20418.53175	20254.381	36	Marcellus
22	6/17/2025	20219.15079	20055	36	Marcellus
23	6/17/2025	20019.76984	19855.619	36	Marcellus
24	6/18/2025	19820.38889	19656.2381	36	Marcellus
25	6/18/2025	19621.00794	19456.8571	36	Marcellus
26	6/19/2025	19421.62698	19257.4762	36	Marcellus
27	6/19/2025	19222.24603	19058.0952	36	Marcellus
28	6/20/2025	19022.86508	18858.7143	36	Marcellus
29	6/21/2025	18823.48413	18659.3333	36	Marcellus
30	6/22/2025	18624.10317	18459.9524	36	Marcellus
31	6/22/2025	18424.72222	18260.5714	36	Marcellus
32	6/22/2025	18225.34127	18061.1905	36	Marcellus
33	6/22/2025	18025.96032	17861.8095	36	Marcellus
34	6/22/2025	17826.57937	17662.4286	36	Marcellus
35	6/23/2025	17627.19841	17463.0476	36	Marcellus
36	6/23/2025	17427.81746	17263.6667	36	Marcellus
37	6/23/2025	17228.43651	17064.2857	36	Marcellus
38	6/24/2025	17029.05556	16864.9048	36	Marcellus
39	6/24/2025	16829.6746	16665.5238	36	Marcellus
40	6/25/2025	16630.29365	16466.1429	36	Marcellus
41	6/25/2025	16430.9127	16266.7619	36	Marcellus
42	6/26/2025	16231.53175	16067.381	36	Marcellus
43	6/26/2025	16032.15079	15868	36	Marcellus
44	6/26/2025	15832.76984	15668.619	36	Marcellus
45	6/27/2025	15633.38889	15469.2381	36	Marcellus
46	6/27/2025	15434.00794	15269.8571	36	Marcellus
47	6/28/2025	15234.62698	15070.4762	36	Marcellus
48	6/29/2025	15035.24603	14871.0952	36	Marcellus
49	6/29/2025	14835.86508	14671.7143	36	Marcellus
50	6/29/2025	14636.48413	14472.3333	36	Marcellus
51	6/30/2025	14437.10317	14272.9524	36	Marcellus
52	6/30/2025	14237.72222	14073.5714	36	Marcellus
53	7/1/2025	14038.34127	13874.1905	36	Marcellus
54	7/1/2025	13838.96032	13674.8095	36	Marcellus
55	7/2/2025	13639.57937	13475.4286	36	Marcellus
56	7/2/2025	13440.19841	13276.0476	36	Marcellus
57	7/2/2025	13240.81746	13076.6667	36	Marcellus
58	7/3/2025	13041.43651	12877.2857	36	Marcellus
59	7/3/2025	12842.05556	12677.9048	36	Marcellus
60	7/4/2025	12642.6746	12478.5238	36	Marcellus
61	7/4/2025	12443.29365	12279.1429	36	Marcellus
62	7/5/2025	12243.9127	12079.7619	36	Marcellus
63	7/5/2025	12044.53175	11880.381	36	Marcellus
64	7/5/2025	11845.15079	11681	36	Marcellus
65	7/6/2025	11645.76984	11481.619	36	Marcellus
66	7/6/2025	11446.38889	11282.2381	36	Marcellus
67	7/7/2025	11247.00794	11082.8571	36	Marcellus
68	7/7/2025	11047.62698	10883.4762	36	Marcellus
69	7/8/2025	10848.24603	10684.0952	36	Marcellus
70	7/8/2025	10648.86508	10484.7143	36	Marcellus
71	7/9/2025	10449.48413	10285.3333	36	Marcellus
72	7/9/2025	10250.10317	10085.9524	36	Marcellus
73	7/9/2025	10050.72222	9886.57143	36	Marcellus
74	7/10/2025	9851.34127	9687.19048	36	Marcellus
75	7/10/2025	9651.960317	9487.80952	36	Marcellus
76	7/11/2025	9452.579365	9288.42857	36	Marcellus
77	7/12/2025	9253.198413	9089.04762	36	Marcellus
78	7/12/2025	9053.81746	8889.66667	36	Marcellus
79	7/13/2025	8854.436508	8690.28571	36	Marcellus
80	7/13/2025	8655.055556	8490.90476	36	Marcellus
81	7/14/2025	8455.674603	8291.52381	36	Marcellus
82	7/14/2025	8256.293651	8092.14286	36	Marcellus
83	7/14/2025	8056.912698	7892.7619	36	Marcellus
84	7/15/2025	7857.531746	7693.38095	36	Marcellus
85	7/15/2025	7658.150794	7494	36	Marcellus

RECEIVED
Office of Oil and Gas
DEC 11 2025
WV Department of
Environmental Protection

03/20/2026

EXHIBIT 2

Stage No.	Stimulations Date	Avg Pump Rate	Avg Treatment Pressure (PSI)			Amount of Proppant (lbs)	Amount of Water (bbls)	Amount of Nitrogen/ other (units)
			Pressure (PSI)	ISIP (PSI)	Breakdown Pressure (PSI)			
1	6/5/2025	73.6	9849	6971	4046	128980	3556	N/A
2	6/6/2025	91.9	10501	7433	4605	409860	7309	N/A
3	6/7/2025	81	9904	10058	4828	417240	8213	N/A
4	6/7/2025	91.9	10581	6320	4148	418640	7929	N/A
5	6/8/2025	85.2	10659	9616	4551	409240	7147	N/A
6	6/8/2025	85.9	10622	6877	5308	408540	7163	N/A
7	6/9/2025	90.3	10773	9035	5030	416720	7110	N/A
8	6/9/2025	90.8	11007	6938	5423	411240	7243	N/A
9	6/10/2025	92.8	11029	8852	5106	411040	7155	N/A
10	6/10/2025	89.8	10892	6790	5499	415380	7116	N/A
11	6/11/2025	92.9	11100	7263	4475	411820	6999	N/A
12	6/11/2025	90.9	10967	6962	4928	407700	7053	N/A
13	6/12/2025	94.5	10969	2656	4772	409760	7042	N/A
14	6/12/2025	92.5	10798	6654	4765	414120	7004	N/A
15	6/13/2025	96.2	10991	4991	5193	415520	8783	N/A
16	6/14/2025	93.8	10750	5843	4731	412740	7027	N/A
17	6/14/2025	94.9	10776	5866	4208	417960	7165	N/A
18	6/15/2025	98.2	11208	6972	5072	417840	7023	N/A
19	6/15/2025	92.5	10287	4086	4364	411880	7027	N/A
20	6/16/2025	94.7	10645	7180	4673	411200	6975	N/A
21	6/16/2025	97.4	10741	6396	3729	416440	7202	N/A
22	6/17/2025	97.9	10312	6658	5046	395580	6958	N/A
23	6/17/2025	99.4	10411	8167	4465	414860	7170	N/A
24	6/18/2025	92.5	9759	6387	4838	412520	7199	N/A
25	6/18/2025	93.5	10426	8065	4875	413200	9333	N/A
26	6/19/2025	87.9	9983	7052	5060	413200	7108	N/A
27	6/19/2025	86.5	10272	6571	5193	415940	6947	N/A
28	6/20/2025	84.6	9897	7122	4888	412660	7066	N/A
29	6/21/2025	91.5	10217	6539	4827	405820	7003	N/A
30	6/22/2025	88	9330	6395	5026	417600	7132	N/A
31	6/22/2025	91.4	9555	7205	4955	420480	7032	N/A
32	6/22/2025	87.2	9242	6170	5060	408660	6880	N/A
33	6/22/2025	86.9	8938	6860	4423	409400	6919	N/A
34	6/22/2025	97.6	9736	4315	5333	408560	6903	N/A
35	6/23/2025	98.6	10223	7580	5193	414100	6999	N/A
36	6/23/2025	95.4	9549	7427	5053	417980	7129	N/A
37	6/23/2025	95.9	10125	6817	4302	408400	6920	N/A
38	6/24/2025	97.3	10438	7045	4142	412760	7006	N/A
39	6/24/2025	92	9800	7244	4817	414980	6956	N/A
40	6/25/2025	97	9980	7218	4834	395880	6848	N/A
41	6/25/2025	95.3	9834	6909	4962	414440	6914	N/A
42	6/26/2025	95	9351	6909	4743	419560	7100	N/A
43	6/26/2025	97.4	10250	8788	4724	400980	6806	N/A
44	6/26/2025	97.4	9548	6235	5156	399620	6961	N/A
45	6/27/2025	93.6	9580	8319	4734	416140	6943	N/A
46	6/27/2025	95.4	9467	6811	4982	395480	6839	N/A
47	6/28/2025	98.4	9719	8558	4626	399120	6834	N/A
48	6/29/2025	99.5	9833	5666	5252	414060	10379	N/A
49	6/29/2025	99.6	9513	6712	4898	416600	6973	N/A
50	6/29/2025	95.3	9553	7237	4780	413720	6905	N/A
51	6/30/2025	95.3	9110	7284	5318	411640	6820	N/A
52	6/30/2025	99.5	9643	6433	4724	412180	6892	N/A
53	7/1/2025	95.6	9252	6166	5340	393480	6704	N/A
54	7/1/2025	92.4	9332	7095	4612	415120	6938	N/A
55	7/2/2025	95.1	9333	7520	4910	414800	6887	N/A
56	7/2/2025	98.2	9649	6578	4678	417480	6816	N/A
57	7/2/2025	95.6	9095	6877	4865	411480	6892	N/A
58	7/3/2025	93.9	8815	7560	4933	398320	6644	N/A
59	7/3/2025	93.5	9287	6212	5328	416500	6880	N/A
60	7/4/2025	99.5	9230	8639	4701	412740	6875	N/A
61	7/4/2025	94.4	8957	7222	4808	397320	6616	N/A
62	7/5/2025	95.1	9095	7901	4279	410460	6946	N/A
63	7/5/2025	95.7	8962	7334	5121	402540	6724	N/A
64	7/5/2025	95	8613	8140	4603	416640	6889	N/A
65	7/6/2025	87.8	8371	7094	4898	402180	6667	N/A
66	7/6/2025	98.1	8577	7885	4536	414720	6818	N/A
67	7/7/2025	95.6	9318	7885	3967	412800	6908	N/A
68	7/7/2025	91.3	8730	7002	4572	411860	6829	N/A
69	7/8/2025	99.6	9012	7971	4943	417560	6859	N/A
70	7/8/2025	91.7	8946	6307	4986	412880	6696	N/A
71	7/9/2025	96.5	8462	7146	4505	408480	6702	N/A
72	7/9/2025	98.2	8347	6857	4651	413920	6719	N/A
73	7/9/2025	92.9	7907	5923	4317	414940	6963	N/A
74	7/10/2025	98.7	8695	6564	4923	396980	6536	N/A
75	7/10/2025	92.7	8256	5319	4353	399680	6616	N/A
76	7/11/2025	98.2	8679	6683	4126	408640	6780	N/A
77	7/12/2025	97.9	9149	5422	4506	395500	6569	N/A
78	7/12/2025	97.8	8583	6946	4103	394220	6588	N/A
79	7/13/2025	98.8	8892	6631	4728	392140	6611	N/A
80	7/13/2025	87.6	8142	7358	4330	394620	7560	N/A
81	7/14/2025	92.7	8523	4401	4801	415440	7081	N/A
82	7/14/2025	99.1	8141	7105	4097	396020	6634	N/A
83	7/14/2025	98.2	8156	6414	4498	397340	6757	N/A
84	7/15/2025	92.2	7588	6768	4538	394520	6584	N/A
85	7/15/2025	83.3	7331	5376	4476	392460	7406	N/A
AVERAGE		93.7	9,601	6,903	4,750	34,513,760	595,809	0

RECEIVED
Office of Oil and Gas
DEC 11 2025
WV Department of
Environmental Protection

EXHIBIT 3

LITHOLOGY/ FORMATION	TOP DEPTH (TVD)	BOTTOM DEPTH (TVD)	TOP DEPTH (MD)	BOTTOM DEPTH (MD)
	From Surface	From Surface	From Surface	From Surface
Sandstone, rr - occ Siltstone	684	774	684	774
Silty Sandstone	774	874	774	874
Silty Sandstone, tr LS	874	1,124	874	1,124
Siltstone, rr SS, rr LS	974	1,174	974	1,174
Sandy Siltstone, rr LS	1,124	1,174	1,124	1,174
Sandy Siltstone, tr LS	1,174	1,224	1,174	1,224
Siltstone, rr SS	1,224	1,324	1,224	1,324
Sandy Siltstone	1,324	1,424	1,324	1,424
Siltstone, rr SS	1,424	1,474	1,424	1,474
Sandy Siltstone, tr shale	1,474	1,674	1,474	1,674
Siltstone, rr Shale, rr SS	1,674	1,724	1,674	1,724
Sandy Siltstone, rr Shale	1,724	1,824	1,724	1,824
Siltstone, rr SS	1,824	1,874	1,824	1,874
Siltstone, rr SS, tr Shale	1,874	2,024	1,874	2,024
Sandy Siltstone, rr LS	2,024	2,143	2,024	2,165
Big Lime	2,169	2,993	2,165	3,033
Fifty Foot Sandstone	2,993	3,056	3,007	3,097
Gordon	3,056	3,298	3,071	3,345
Fifth Sandstone	3,298	3,646	3,319	3,700
Bayard	3,646	4,026	3,674	4,088
Speechley	4,026	4,184	4,062	4,250
Balltown	4,184	4,659	4,224	4,734
Bradford	4,659	5,226	4,708	5,315
Benson	5,226	5,686	5,289	5,786
Alexander	5,686	6,879	5,760	7,042
Sycamore	6722	6853	6855	7016
Middlesex	6853	6952	7016	7169
Burkett	6952	6982	7169	7226
Tully	6982	7063	7226	7446
Marcellus	7063	NA	7446	NA

RECEIVED
Office of Oil and Gas
DEC 11 2025
WV Department of
Environmental Protection

03/20/2026

Hydraulic Fracturing Fluid Product Component Information Disclosure

Job Start Date:	06/05/2025
Job End Date:	07/15/2025
State:	West Virginia
County:	Wetzel
API Number:	47-103-03695-00-00
Operator Name:	Antero Resources Corporation
Well Name and Number:	Duke Unit 2H
Latitude:	39.567839
Longitude:	-80.712792
Datum:	NAD83
Federal Well:	NO
Indian Well:	NO
True Vertical Depth:	7086
Total Base Water Volume (gal)*:	26301744
Total Base Non Water Volume:	0



Water Source	Percent
Groundwater, < 1000TDS	100.00%

RECEIVED
Office of Oil and Gas
DEC 11 2025
WV Department of
Environmental Protection

Hydraulic Fracturing Fluid Composition:

Trade Name	Supplier	Purpose	Ingredients	Chemical Abstract Service Number (CAS #)	Maximum Ingredient Concentration in Additive (% by mass)**	Maximum Ingredient Concentration in HF Fluid (% by mass)**	Comments
100 mesh sand	NexTier Completions Solutions	Propping Agent					
15% HCl	Tarquin	Acid					
CIA-12	NexTier Completions Solutions	Acid corrosion inhibitor					
Fincide GQ 12A	NexTier Completions Solutions	Biocide					
NGA-14	NexTier Completions Solutions	Gelling Agent					
Other Chemical(s)	Listed Above	See Trade Name(s)					
SlickStim 150CE-15	NexTier Completions Solutions	Friction Reducer					
StimBreak Encap APB	NexTier Completions	Breaker					

03/20/2026

LT	Solutions						
ViscStim 300CE-113	NexTier Completions Solutions	Friction Reducer					
Water	Operator	Carrier Fluid					

Items above are Trade Names. Items below are the individual ingredients.

			Water	7732-18-5	100.00000	86.03632	
			Crystalline Silica	14808-60-7	99.90000	13.56124	
			Water	7732-18-5	85.00000	0.26793	
			Hydrochloric Acid	7647-01-0	15.00000	0.04728	
			Chemplex-Polymer-00019	Proprietary	40.00000	0.02073	
			Isoalkanes	6742-47-8	30.00000	0.01555	
			Aluminum Oxide	1344-28-1	0.10000	0.01357	
			Distillates (petroleum), hydrotreated light	64742-47-8	30.00000	0.00290	
			Glutaraldehyde	111-30-8	30.00000	0.00278	
			Chemplex-surfactant-00015	Proprietary	5.00000	0.00259	
			Chemplex-Polymer-00019	Proprietary	20.00000	0.00194	
			Chemplex-surfactant-00021	Proprietary	3.00000	0.00155	
			Distillates (Petroleum), Hydrotreated Light	64742-47-8	50.00000	0.00114	
			ammonium chloride	12125-02-9	5.00000	0.00048	
			alcohols, C12-16, ethoxylated	68551-12-2	5.00000	0.00048	
			oleic acid diethanolamide	93-83-4	5.00000	0.00048	
			Alkyl (C12-16) dimethylbenzylammonium chloride	68424-85-1	5.00000	0.00046	
			1-Decanaminium, N-decyl- N,N-dimethyl-,chloride	7173-51-5	5.00000	0.00046	
			Ammonium Persulfate	7727-54-0	90.00000	0.00027	
			Ethylene glycol	107-21-1	45.00000	0.00014	
			Glycol Ether EB	111-76-2	45.00000	0.00014	
			Bentonite	1302-78-9	5.00000	0.00011	
			Alkoxylated Isodecyl Alcohol	154518-36-2	5.00000	0.00011	
			N,N-Dimethylformamide	68-12-2	20.00000	0.00006	
			Tar bases,quinoline derivs.,benzyl chloride- quaternized	72480-70-7	20.00000	0.00006	
			Water	7732-18-5	15.00000	0.00005	

RECEIVED
Office of Oil and Gas
DEC 11 2025
WV Department of
Environmental Protection

03/20/2026

			Cinnamaldehyde	104-55-2	10.00000	0.00003	
			Nonylphenol ethoxylated	127087-87-0	10.00000	0.00003	
			Alcohols, C6-12	68603-15-6	10.00000	0.00003	

* Total Water Volume sources may include various types of water including fresh water, produced water, and recycled water

** Information is based on the maximum potential for concentration and thus the total may be over 100%

Note: For Field Development Products (products that begin with FDP), MSDS level only information has been provided. Ingredient information for chemicals subject to 29 CFR 1910.1200(i) and Appendix D are obtained from suppliers Material Safety Data Sheets (MSDS)

RECEIVED
Office of Oil and Gas
DEC 11 2025
WV Department of
Environmental Protection

7,759' to Bottom Hole

1,307' to Top Hole

TOP HOLE LATITUDE 39 - 35 - 00
 BTM HOLE LATITUDE 39 - 37 - 30

LONGITUDE 80 - 42 - 30

5,676' to Top Hole
 5,659' to Bottom Hole



Top Hole Coordinates, As-drilled data, and information was provided by Antero Resources Corporation. Allegheny Surveys Inc. (ASI) is not certifying the data and information provided. ASI is not responsible for any errors or inaccuracies with the data and information that has been provided.

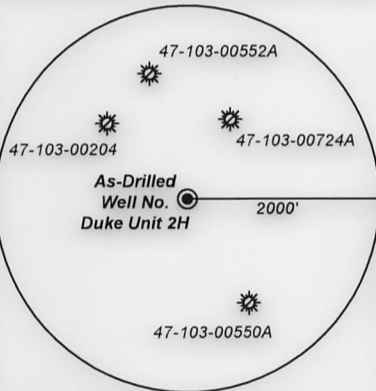
I, the undersigned, hereby certify that this plat is correct to the best of my knowledge and belief and shows all the information required by law and the rules issued and prescribed by the Department of Environmental Protection.

Bradley D. Miller

Bradley D. Miller, P.S. 2167



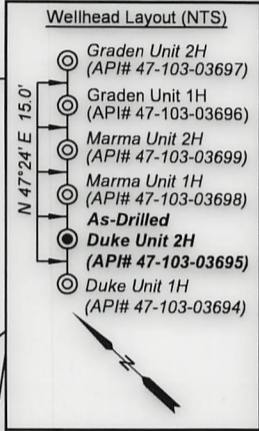
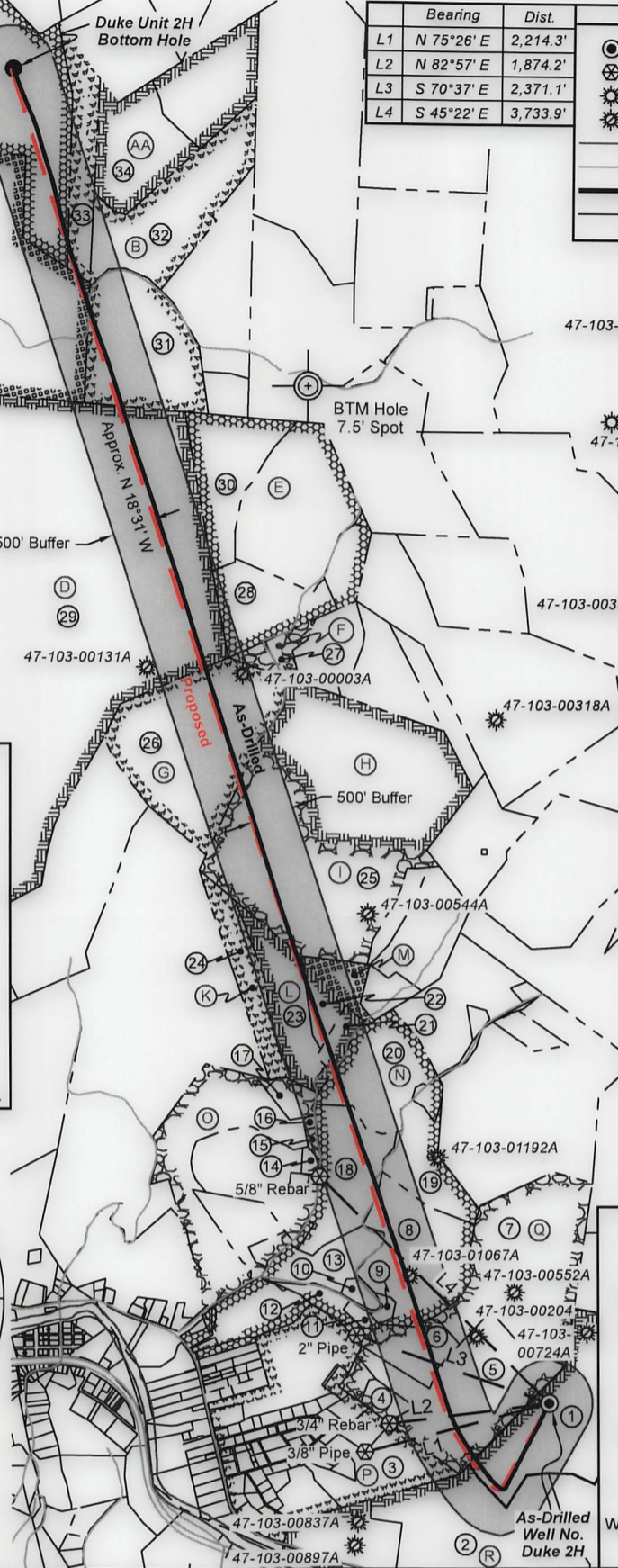
SEAL



Note: No water wells were found within 2000' of proposed well. No occupied dwellings or buildings 2,500 square feet or larger used to house or shelter dairy cattle or poultry husbandry are located within 625' of the center of the well pad.

	Bearing	Dist.
L1	N 75°26' E	2,214.3'
L2	N 82°57' E	1,874.2'
L3	S 70°37' E	2,371.1'
L4	S 45°22' E	3,733.9'

Legend	
	Proposed gas well
	Monument, as noted
	Existing Well, as noted
	Digitized Well, as noted
	Creek or Drain
	Road
	Surface boundary (approx.)
	Interior surface tracts (approx.)



Notes:
 Well No. Duke Unit 2H
 As-Drilled POE Coordinates
 WV Coordinate System of 1927, North Zone
 N: 390,629.08'
 E: 1,657,157.56'
 Lat: 39°33'58.08"
 Lon: 80°42'58.11"
 UTM Zone 17, NAD 1983
 N: 4,379,651.544m
 E: 524,398.255m

Notes
 West Virginia Coordinate System of 1927, North Zone based upon Differential GPS Measurements.
 Well No. Duke Unit 2H Top Hole coordinates are
 N: 391,206.09' Latitude: 39°34'03.90"
 E: 1,658,059.66' Longitude: 80°42'46.69"
 Bottom Hole coordinates are
 N: 406,585.79' Latitude: 39°36'35.06"
 E: 1,651,813.59' Longitude: 80°44'09.14"
 UTM Zone 17, NAD 1983
 Top Hole Coordinates Bottom Hole Coordinates
 N: 4,379,831.930m N: 4,384,485.669m
 E: 524,670.163m E: 522,689.178m
 Plat orientation and corner and well references are based upon the grid north meridian.
 Well location references are based upon the magnetic meridian.

FILE NO: 118-34-G-18
 DRAWING NO: Duke Unit 2H As Drilled
 SCALE: 1" = 2000'
 MINIMUM DEGREE OF ACCURACY: Submeter
 PROVEN SOURCE OF ELEVATION: WVDOT, Harrisville, WV

STATE OF WEST VIRGINIA
 DEPARTMENT OF ENVIRONMENTAL PROTECTION
OIL AND GAS DIVISION

DATE: November 21 2025
 OPERATOR'S WELL NO. Duke Unit 2H
API WELL NO
47 - 103 - 03695
 STATE COUNTY PERMIT

WELL TYPE: OIL GAS LIQUID INJECTION WASTE DISPOSAL
 (IF GAS) PRODUCTION: STORAGE DEEP SHALLOW
 LOCATION: ELEVATION: As-Built 1,248 WATERSHED: Fishing Creek QUADRANGLE: Pine Grove
 DISTRICT: Green COUNTY: Wetzel **03/20/2026**
 SURFACE OWNER: Dallison Lumber Company ACREAGE: 51.50
 ROYALTY OWNER: Jenkins Miller LEASE NO: _____ ACREAGE: 200
 PROPOSED WORK: DRILL CONVERT DRILL DEEPER FRACTURE OR STIMULATE PLUG OFF OLD FORMATION
 PERFORATE NEW FORMATION OTHER PHYSICAL CHANGE IN WELL (SPECIFY) As-Drilled 7067' TVD
 PLUG AND ABANDON CLEAN OUT AND REPLUG TARGET FORMATION: Marcellus Shale ESTIMATED DEPTH: 24,317' MD

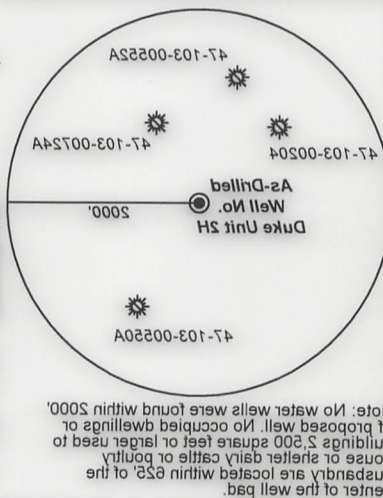
WELL OPERATOR: Antero Resources Corporation DESIGNATED AGENT: Conrad Baston
 ADDRESS: 1615 Wynkoop Street ADDRESS: 535 White Oaks Blvd.
Denver, CO 80202 Bridgeport, WV 26330



Top Hole Coordinates
As-dilled data and
information was provided by
Antero Resources
Corporation. Allegheny
Surveys Inc. (ASI) is not
certifying the data and
information provided. ASI is
not responsible for any
errors or inaccuracies with
the data and information
that has been provided.

I, the undersigned, hereby certify that this
plot is correct to the best of my
knowledge and belief and shows all the
information required by law and the rules
issued and prescribed by the
Department of Environmental Protection.

Bradley D. Miller, P.S. 2187

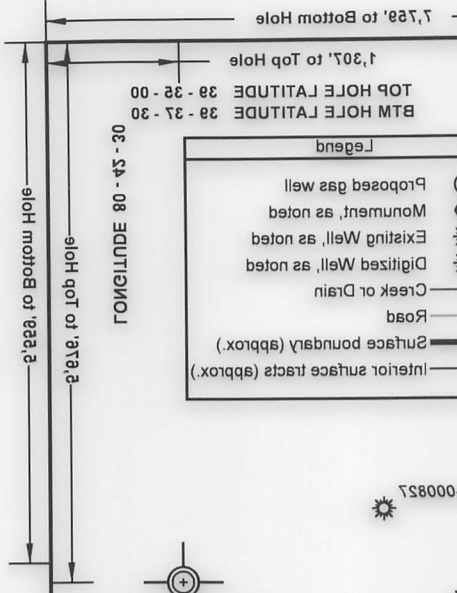


Note: No water wells were found within 500'
of proposed well. No occupied dwellings or
buildings \geq 500 square feet or larger used to
house or shelter dairy cattle or poultry
centrally are located within 625' of the
center of the well pad.

Bearing	Dist.
L1 N 75°28' E	5,214.3'
L2 N 85°27' E	1,874.2'
L3 S 70°37' E	5,371.7'
L4 S 45°25' E	3,733.9'

Legend

- Proposed gas well
- Monument, as noted
- Existing Well, as noted
- Digitized Well, as noted
- Creek or Drain
- Road
- Surface boundary (approx.)
- Interior surface tracts (approx.)

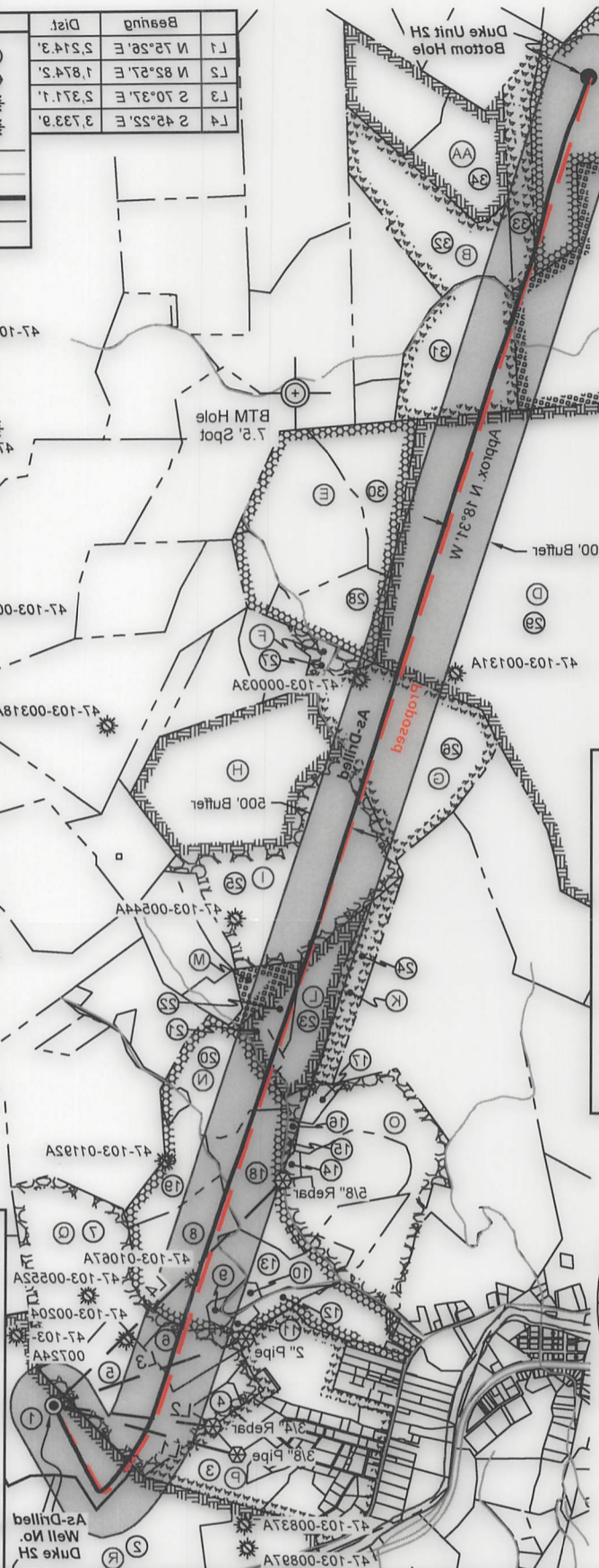


Wellhead Layout (N12)

- Graben Unit 2H (API# 47-103-03697)
- Graben Unit 1H (API# 47-103-03698)
- Marmas Unit 2H (API# 47-103-03699)
- Marmas Unit 1H (API# 47-103-03698)
- As-Dilled (API# 47-103-03695)
- Duke Unit 2H (API# 47-103-03694)
- Duke Unit 1H (API# 47-103-03694)

Notes:
Well No. Duke Unit 2H
As-Dilled POE Coordinates
WV Coordinate System
to 1927 North Zone
N: 390,629.08
E: 1,657,157.56
Lat: 39°33'58.08"
Lon: 80°42'58.11"
UTM Zone 17 NAD 1983
N: 4,379,651.244m
E: 524,398.252m

Notes
West Virginia Coordinate System
of 1927, North Zone
based upon Differential GPS Measurements.
Well No. Duke Unit 2H Top Hole coordinates are
N: 391,206.09', Latitude: 39°34'03.90"
E: 1,658,059.66', Longitude: 80°42'46.69"
Bottom Hole coordinates are
N: 406,585.79', Latitude: 39°36'35.06"
E: 1,651,813.59', Longitude: 80°44'09.14"
UTM Zone 17 NAD 1983
Top Hole Coordinates Bottom Hole Coordinates
N: 4,379,831.930m N: 4,384,485.699m
E: 524,670.163m E: 525,689.178m
Plat orientation and corner and well references
are based upon the grid north meridian.



STATE OF WEST VIRGINIA
OIL AND GAS DIVISION
DEPARTMENT OF ENVIRONMENTAL PROTECTION

STATE COUNTY PERMIT
47 - 103 - 03695
API WELL NO
DATE: November 21 2025
OPERATOR'S WELL NO. Duke Unit 2H

FILE NO.: 118-34-G-18
DRAWING NO.: Duke Unit 2H As Dilled
SCALE: 1" = 200'
MINIMUM DEGREE OF ACCURACY:
Submeter
PROVEN SOURCE OF ELEVATION:
WVDOT, Harrisville, WV

WELL TYPE: OIL GAS LIQUID INJECTION WASTE DISPOSAL

(IF GAS) PRODUCTION: STORAGE DEEP SHALLOW

LOCATION: ELEVATION: As-Built 1,248' WATERSHED: Fishing Creek QUADRANGLE: Pine Grove

DISTRICT: Green COUNTY: Wetzel ACREAGE: 51.50

SURFACE OWNER: Dailison Lumber Company ROYALTY OWNER: Jenkins Miller

PROPOSED WORK: DRILL CONVERT DRILL DEEPER FRACTURE OR STIMULATE PLUG OFF OLD FORMATION

PERFORATE NEW FORMATION OTHER PHYSICAL CHANGE IN WELL (SPECIFY) As-Dilled

DESIGNATED AGENT: Conrad Baston
ADDRESS: 1615 Wylkoop Street, Denver, CO 80202
ADDRESS: 535 White Oaks Blvd, Bridgport, WV 26330



Leases	
A	Sylvia Jean Highley
B	Belinda K. Harrison
C	Elizabeth P. Orner
D	Shiben Estates, Inc.
E	Chesapeake Appalachia, LLC
F	Chesapeake Appalachia, LLC
G	Russell T. Powell
H	Acropolis, Inc.
I	Acropolis, Inc.
K	WSD Properties
L	Antero Minerals, LLC
M	Acropolis, Inc.
N	Antero Minerals, LLC
O	Antero Minerals, LLC
P	Antero Minerals, LLC
Q	Antero Minerals, LLC
R	Jenkins Miller
AA	Jay H. Renner

ID	TM-Par	Owner	Bk/Pg	Acres
1	14-19	Dallson Lumber Company	357/267	51.50
2	13-83	Michelle L. Igleheart	493/370	58.00
3	13-54	Kenneth & Loraine Highley	230/93	20.17
4	13-39	Ruth E. Staley	512/286	3.13
5	13-40	Kenneth E. & Vicky A. VanDyne	357/204	42.33
6	13-34	Kenneth E. & Vicky A. VanDyne	357/204	14.50
7	13-26.7	John Michael & Stanley Dale Pittman	458/837	55.00
8	13-26	John M. & Stanley D. Pittman	458/837	30.52
9	13-26.1	John Michael & Stanley Dale Pittman	458/837	1.50
10	13-26.8	Robert N. & Joyce E. C. Edgell	312/523	2.01
11	13-34.1	John Michael & Stanley Dale Pittman	458/837	1.50
12	13-34	Kenneth E. & Vicky A. VanDyne	357/204	14.50
13	13-26.5	Stanley D. & Mary Jo Pittman	284/657	14.72
14	13-14.5	Donald L. & Ellen H. Anderson	335/203	1.50
15	13-14.4	Jack & Neal A. Cain	401/433	0.62
16	13-14.2	Jack & Neal A. Cain	401/433	0.42
17	13-14.3	Robert & Thomas Adams	W116/19	4.88
18	13-26.6	Stanley & Mary Jo Pittman	284/657	27.38
19	13-15.2	Blue Racer Midstream, LLC	452/546	20.00
20	13-15	Blue Racer Midstream, LLC	452/542	22.59
21	13-9.1	Karen Sue Bassett & Terry E. Roberts	339/469	4.63
22	13-9	Terry E. & Justin W. Roberts	394/528	11.70
23	13-8	Richard W. Roberts & Justin W. Roberts	394/526	22.00
24	9-51	WSD Properties LLC	441/770	13.50
25	9-42	WSD Properties LLC	441/793	149.00
26	9-41	WSD Properties LLC	441/793	48.00
27	9-29	Richard David Hornbeck	334/514	7.50
28	9-28	Richard David Hornbeck	334/514	18.75
29	9-14	Teresa Ann Ice	494/650	449.48
30	8-28	Timothy S. Harrison	408/280	25.05
31	8-8	Belinda Harrison	493/544	38.75
32	3-38	Julie Marie Lemons	493/298	39.75
33	3-39	Timothy Scott Harrison	493/300	25.25
34	3-29	Linda Kaye Gordon	482/473	26.00
35	3-37	Richard D. Hornbeck	483/191	118.00
36	3-28	Richard D. Hornbeck	483/191	120.00

FILE NO: 118-34-G-18
DRAWING NO: Duke Unit 2H As Drilled
SCALE: 1" = 2000'
MINIMUM DEGREE OF ACCURACY:
Submeter
PROVEN SOURCE OF ELEVATION:
WVDOT, Harrisville, WV

STATE OF WEST VIRGINIA
DEPARTMENT OF ENVIRONMENTAL PROTECTION
OIL AND GAS DIVISION



DATE: November 21 2025
OPERATOR'S WELL NO. Duke Unit 2H
API WELL NO
47 - 103 - 03695
STATE COUNTY PERMIT

WELL TYPE: OIL GAS LIQUID INJECTION WASTE DISPOSAL
(IF GAS) PRODUCTION: STORAGE DEEP SHALLOW
LOCATION: ELEVATION: As-Built 1,248 WATERSHED: Fishing Creek QUADRANGLE: Pine Grove
DISTRICT: Green COUNTY: Wetzel 03/20/2026
SURFACE OWNER: Dallison Lumber Company ACREAGE: 51.50
ROYALTY OWNER: Jenkins Miller LEASE NO: ACREAGE: 200
PROPOSED WORK: DRILL CONVERT DRILL DEEPER FRACTURE OR STIMULATE PLUG OFF OLD FORMATION
 PERFORATE NEW FORMATION OTHER PHYSICAL CHANGE IN WELL (SPECIFY) As-Drilled 7067' TVD
 PLUG AND ABANDON CLEAN OUT AND REPLUG TARGET FORMATION: Marcellus Shale ESTIMATED DEPTH: 24,317' MD

WELL OPERATOR: Antero Resources Corporation DESIGNATED AGENT: Conrad Baston
ADDRESS: 1615 Wynkoop Street ADDRESS: 535 White Oaks Blvd.
Denver, CO 80202 Bridgeport, WV 26330



Leases	
AA	Jay H. Renner
R	Jenkins Miller
Q	Antero Minerals, LLC
P	Antero Minerals, LLC
O	Antero Minerals, LLC
N	Antero Minerals, LLC
M	Acropolis, Inc.
L	Antero Minerals, LLC
K	WSD Properties
I	Acropolis, Inc.
H	Acropolis, Inc.
G	Russell T. Powell
F	Chesapeake Appalachia, LLC
E	Chesapeake Appalachia, LLC
D	Shiben Estates, Inc.
C	Elizabeth P. Omer
B	Belinda K. Harrison
A	Sylvia Jean Higley

ID	TM-Par	Owner	BK/ptg	Acres
36	3-28	Richard D. Hombeck	483191	120.00
35	3-27	Richard D. Hombeck	483191	118.00
34	3-26	Linda Kaye Gordon	482143	26.00
33	3-26	Timothy Scott Harrison	483300	26.25
32	3-28	Julie Marie Lemons	483288	38.75
31	8-8	Belinda Harrison	483544	38.75
30	8-28	Timothy S. Harrison	481280	25.05
29	9-14	Teresa Ann Ice	481850	448.48
28	9-28	Richard David Hombeck	334514	18.75
27	9-29	Richard David Hombeck	334514	7.50
26	9-41	WSD Properties LLC	441783	48.00
25	9-42	WSD Properties LLC	441783	149.00
24	9-21	WSD Properties LLC	441770	13.50
23	13-8	Richard W. Roberts & Justin W. Roberts	384528	22.00
22	13-9	Terry E. & Justin W. Roberts	384528	11.70
21	13-9-1	Karen Sue Bassett & Terry E. Roberts	384589	4.83
20	13-12	Blue Racer Midstream, LLC	452542	22.59
19	13-12-2	Blue Racer Midstream, LLC	452548	20.00
18	13-28-8	Stanley & Mary Jo Pittman	284857	22.38
17	13-14-3	Robert & Thomas Adams	W11819	4.88
16	13-14-2	Jack & Neal A. Cain	401433	0.42
15	13-14-4	Jack & Neal A. Cain	401433	0.62
14	13-14-5	Donald L. & Ellen H. Anderson	382503	1.50
13	13-28-5	Stanley D. & Mary Jo Pittman	284857	14.72
12	13-34	Kenneth E. & Vicki A. Vandyne	382504	14.50
11	13-34-1	John Michael & Stanley Dale Pittman	481837	1.50
10	13-28-8	Robert N. & Joyce E. C. Edgell	312823	2.01
9	13-28-1	John Michael & Stanley Dale Pittman	481837	1.50
8	13-28	John M. & Stanley D. Pittman	481837	30.52
7	13-28-7	John Michael & Stanley Dale Pittman	481837	25.00
6	13-34	Kenneth E. & Vicki A. Vandyne	382504	14.50
5	13-40	Kenneth E. & Vicki A. Vandyne	382504	42.33
4	13-39	Ruth E. Staley	512288	3.13
3	13-24	Kenneth & Lorraine Higley	230193	20.17
2	13-83	Michelle L. Iglehart	483370	58.00
1	14-19	Dalison Lumber Company	382587	81.50

WELL OPERATOR: Antero Resources Corporation
 ADDRESS: 1815 Winkoop Street
 Denver, CO 80202

DESIGNATED AGENT: Conrad Baston
 ADDRESS: 535 White Oaks Blvd.
 Bridgport, WV 26330

WELL TYPE: OIL GAS LIQUID INJECTION WASTE DISPOSAL
 (IF GAS) PRODUCTION: STORAGE DEEP SHALLOW

LOCATION: ELEVATION: As-Built 1,248 WATERSHED: Fishing Creek QUADRANGLE: Pine Grove
 DISTRICT: **03/20/2026** COUNTY: Wetzel ACREAGE: 51.50 SURFACE OWNER: Dalison Lumber Company ROYALTY OWNER: Jenkins Miller

PROPOSED WORK: DRILL CONVERT DRILL DEEPER FRACTURE OR STIMULATE PLUG OFF OLD FORMATION
 PERFORATE NEW FORMATION OTHER PHYSICAL CHANGE IN WELL (SPECIFY) As-Dilled LEASE NO: ACREAGE: 200

TARGET FORMATION: Marcellus Shale ESTIMATED DEPTH: 2431.7 MD DATE: November 21 2025 OPERATOR'S WELL NO. Duke Unit 2H API WELL NO. STATE COUNTY PERMIT

**Antero Resources
Well No. Duke 2H
As-Drilled
Antero Resources Corporation**

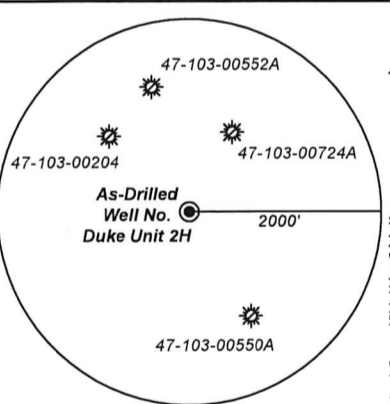
**Page
1 of 2**



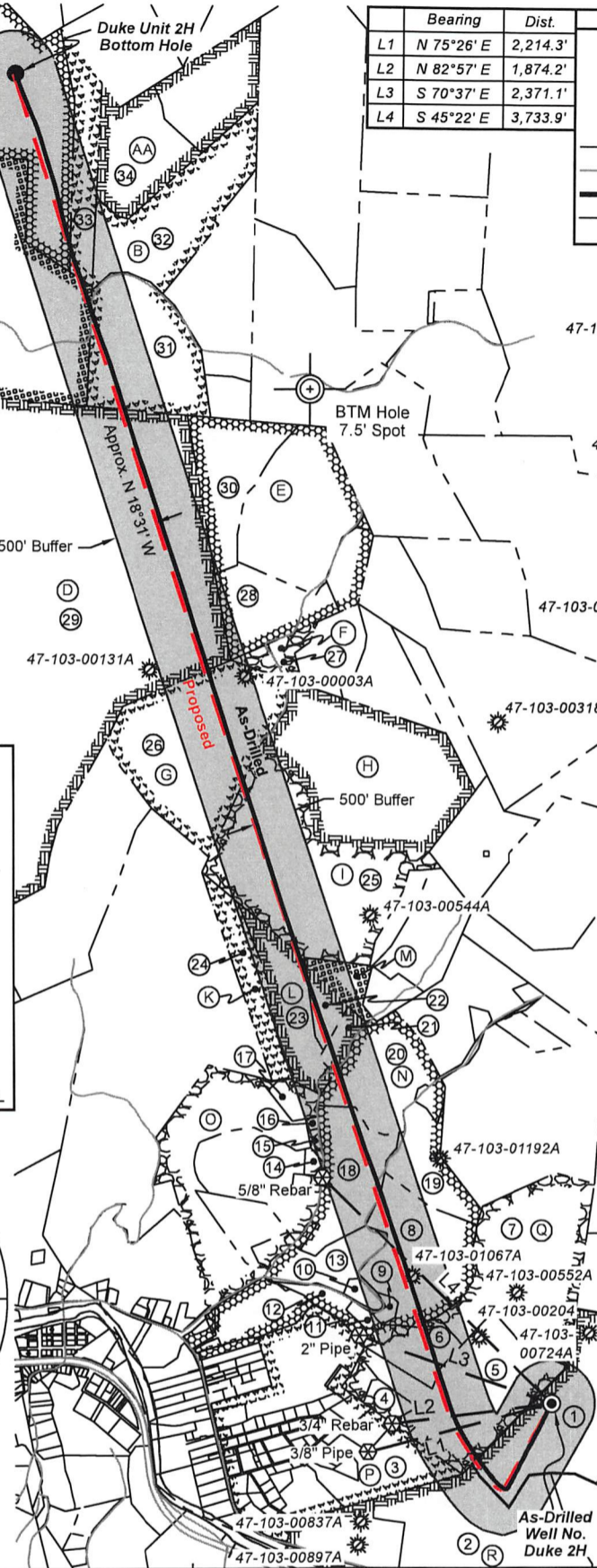
Top Hole Coordinates, As-drilled data, and information was provided by Antero Resources Corporation. Allegheny Surveys Inc. (ASI) is not certifying the data and information provided. ASI is not responsible for any errors or inaccuracies with the data and information that has been provided.

I, the undersigned, hereby certify that this plat is correct to the best of my knowledge and belief and shows all the information required by law and the rules issued and prescribed by the Department of Environmental Protection.

Bradley D. Miller
Bradley D. Miller, P.S. 2167



Note: No water wells were found within 2000' of proposed well. No occupied dwellings or buildings 2,500 square feet or larger used to house or shelter dairy cattle or poultry husbandry are located within 625' of the center of the well pad.

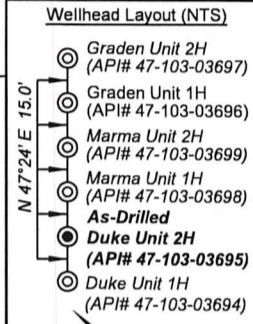


	Bearing	Dist.
L1	N 75°26' E	2,214.3'
L2	N 82°57' E	1,874.2'
L3	S 70°37' E	2,371.1'
L4	S 45°22' E	3,733.9'

Legend	
	Proposed gas well
	Monument, as noted
	Existing Well, as noted
	Digitized Well, as noted
	Creek or Drain
	Road
	Surface boundary (approx.)
	Interior surface tracts (approx.)

7,759' to Bottom Hole
1,307' to Top Hole
TOP HOLE LATITUDE 39 - 35 - 00
BTM HOLE LATITUDE 39 - 37 - 30

LONGITUDE 80 - 42 - 30
5,676' to Top Hole
5,559' to Bottom Hole



Notes:
Well No. Duke Unit 2H
As-Drilled POE Coordinates
WV Coordinate System of 1927, North Zone
N: 390,629.08'
E: 1,657,157.56'
Lat: 39°33'58.08"
Lon: 80°42'58.11"
UTM Zone 17, NAD 1983
N: 4,379,651.544m
E: 524,398.255m

Notes
West Virginia Coordinate System of 1927, North Zone based upon Differential GPS Measurements.
Well No. Duke Unit 2H Top Hole coordinates are
N: 391,206.09' Latitude: 39°34'03.90"
E: 1,658,059.66' Longitude: 80°42'46.69"
Bottom Hole coordinates are
N: 406,585.79' Latitude: 39°36'35.06"
E: 1,651,813.59' Longitude: 80°44'09.14"
UTM Zone 17, NAD 1983
Top Hole Coordinates Bottom Hole Coordinates
N: 4,379,831.930m N: 4,384,485.669m
E: 524,670.163m E: 522,689.178m
Plat orientation and corner and well references are based upon the grid north meridian.
Well location references are based upon the magnetic meridian.

FILE NO: 118-34-G-18
DRAWING NO: Duke Unit 2H As Drilled
SCALE: 1" = 2000'
MINIMUM DEGREE OF ACCURACY: Submeter
PROVEN SOURCE OF ELEVATION: WVDOT, Harrisville, WV

STATE OF WEST VIRGINIA
DEPARTMENT OF ENVIRONMENTAL PROTECTION
OIL AND GAS DIVISION

DATE: November 21 2025
OPERATOR'S WELL NO. Duke Unit 2H
API WELL NO
47 - 103 - 03695
STATE COUNTY PERMIT

WELL TYPE: OIL GAS LIQUID INJECTION WASTE DISPOSAL
(IF GAS) PRODUCTION: STORAGE DEEP SHALLOW
LOCATION: ELEVATION: As-Built 1,248 WATERSHED: Fishing Creek QUADRANGLE: Pine Grove
DISTRICT: Green COUNTY: Wetzel 03/20/2026
SURFACE OWNER: Dallison Lumber Company ACREAGE: 51.50
ROYALTY OWNER: Jenkins Miller LEASE NO: ACREAGE: 200
PROPOSED WORK: DRILL CONVERT DRILL DEEPER FRACTURE OR STIMULATE PLUG OFF OLD FORMATION
 PERFORATE NEW FORMATION OTHER PHYSICAL CHANGE IN WELL (SPECIFY) As-Drilled 7067' TVD
 PLUG AND ABANDON CLEAN OUT AND REPLUG TARGET FORMATION: Marcellus Shale ESTIMATED DEPTH: 24,317' MD

WELL OPERATOR: Antero Resources Corporation DESIGNATED AGENT: Conrad Baston
ADDRESS: 1615 Wynkoop Street ADDRESS: 535 White Oaks Blvd.
Denver, CO 80202 Bridgeport, WV 26330



Leases	
A	Sylvia Jean Highley
B	Belinda K. Harrison
C	Elizabeth P. Orner
D	Shiben Estates, Inc.
E	Chesapeake Appalachia, LLC
F	Chesapeake Appalachia, LLC
G	Russell T. Powell
H	Acropolis, Inc.
I	Acropolis, Inc.
K	WSD Properties
L	Antero Minerals, LLC
M	Acropolis, Inc.
N	Antero Minerals, LLC
O	Antero Minerals, LLC
P	Antero Minerals, LLC
Q	Antero Minerals, LLC
R	Jenkins Miller
AA	Jay H. Renner

ID	TM-Par	Owner	Bk/Pg	Acres
1	14-19	Dallson Lumber Company	357/267	51.50
2	13-83	Michelle L. Igleheart	493/370	58.00
3	13-54	Kenneth & Loraine Highley	230/93	20.17
4	13-39	Ruth E. Staley	512/286	3.13
5	13-40	Kenneth E. & Vicky A. VanDyne	357/204	42.33
6	13-34	Kenneth E. & Vicky A. VanDyne	357/204	14.50
7	13-26.7	John Michael & Stanley Dale Pittman	458/837	55.00
8	13-26	John M. & Stanley D. Pittman	458/837	30.52
9	13-26.1	John Michael & Stanley Dale Pittman	458/837	1.50
10	13-26.8	Robert N. & Joyce E. C. Edgell	312/523	2.01
11	13-34.1	John Michael & Stanley Dale Pittman	458/837	1.50
12	13-34	Kenneth E. & Vicky A. VanDyne	357/204	14.50
13	13-26.5	Stanley D. & Mary Jo Pittman	284/657	14.72
14	13-14.5	Donald L. & Ellen H. Anderson	335/203	1.50
15	13-14.4	Jack & Neal A. Cain	401/433	0.62
16	13-14.2	Jack & Neal A. Cain	401/433	0.42
17	13-14.3	Robert & Thomas Adams	W116/19	4.88
18	13-26.6	Stanley & Mary Jo Pittman	284/657	27.38
19	13-15.2	Blue Racer Midstream, LLC	452/546	20.00
20	13-15	Blue Racer Midstream, LLC	452/542	22.59
21	13-9.1	Karen Sue Bassett & Terry E. Roberts	339/469	4.63
22	13-9	Terry E. & Justin W. Roberts	394/528	11.70
23	13-8	Richard W. Roberts & Justin W. Roberts	394/526	22.00
24	9-51	WSD Properties LLC	441/770	13.50
25	9-42	WSD Properties LLC	441/793	149.00
26	9-41	WSD Properties LLC	441/793	48.00
27	9-29	Richard David Hornbeck	334/514	7.50
28	9-28	Richard David Hornbeck	334/514	18.75
29	9-14	Teresa Ann Ice	494/650	449.48
30	8-28	Timothy S. Harrison	408/280	25.05
31	8-8	Belinda Harrison	493/544	38.75
32	3-38	Julie Marie Lemons	493/298	39.75
33	3-39	Timothy Scott Harrison	493/300	25.25
34	3-29	Linda Kaye Gordon	482/473	26.00
35	3-37	Richard D. Hornbeck	483/191	118.00
36	3-28	Richard D. Hornbeck	483/191	120.00

FILE NO: 118-34-G-18
DRAWING NO: Duke Unit 2H As Drilled
SCALE: 1" = 2000'
MINIMUM DEGREE OF ACCURACY:
Submeter
PROVEN SOURCE OF ELEVATION:
WVDOT, Harrisville, WV



DATE: November 21 2025
OPERATOR'S WELL NO. Duke Unit 2H
API WELL NO
47 - 103 - 03695
STATE COUNTY PERMIT

WELL TYPE: OIL GAS LIQUID INJECTION WASTE DISPOSAL
(IF GAS) PRODUCTION: STORAGE DEEP SHALLOW
LOCATION: ELEVATION: As-Built 1,248 WATERSHED: Fishing Creek QUADRANGLE: Pine Grove
DISTRICT: Green COUNTY: Wetzel 03/20/2026
SURFACE OWNER: Dallison Lumber Company ACREAGE: 51.50
ROYALTY OWNER: Jenkins Miller LEASE NO: ACREAGE: 200
PROPOSED WORK: DRILL CONVERT DRILL DEEPER FRACTURE OR STIMULATE PLUG OFF OLD FORMATION
 PERFORATE NEW FORMATION OTHER PHYSICAL CHANGE IN WELL (SPECIFY) As-Drilled 7067' TVD
 PLUG AND ABANDON CLEAN OUT AND REPLUG TARGET FORMATION: Marcellus Shale ESTIMATED DEPTH: 24,317' MD

WELL OPERATOR: Antero Resources Corporation DESIGNATED AGENT: Conrad Baston
ADDRESS: 1615 Wynkoop Street ADDRESS: 535 White Oaks Blvd.
Denver, CO 80202 Bridgeport, WV 26330