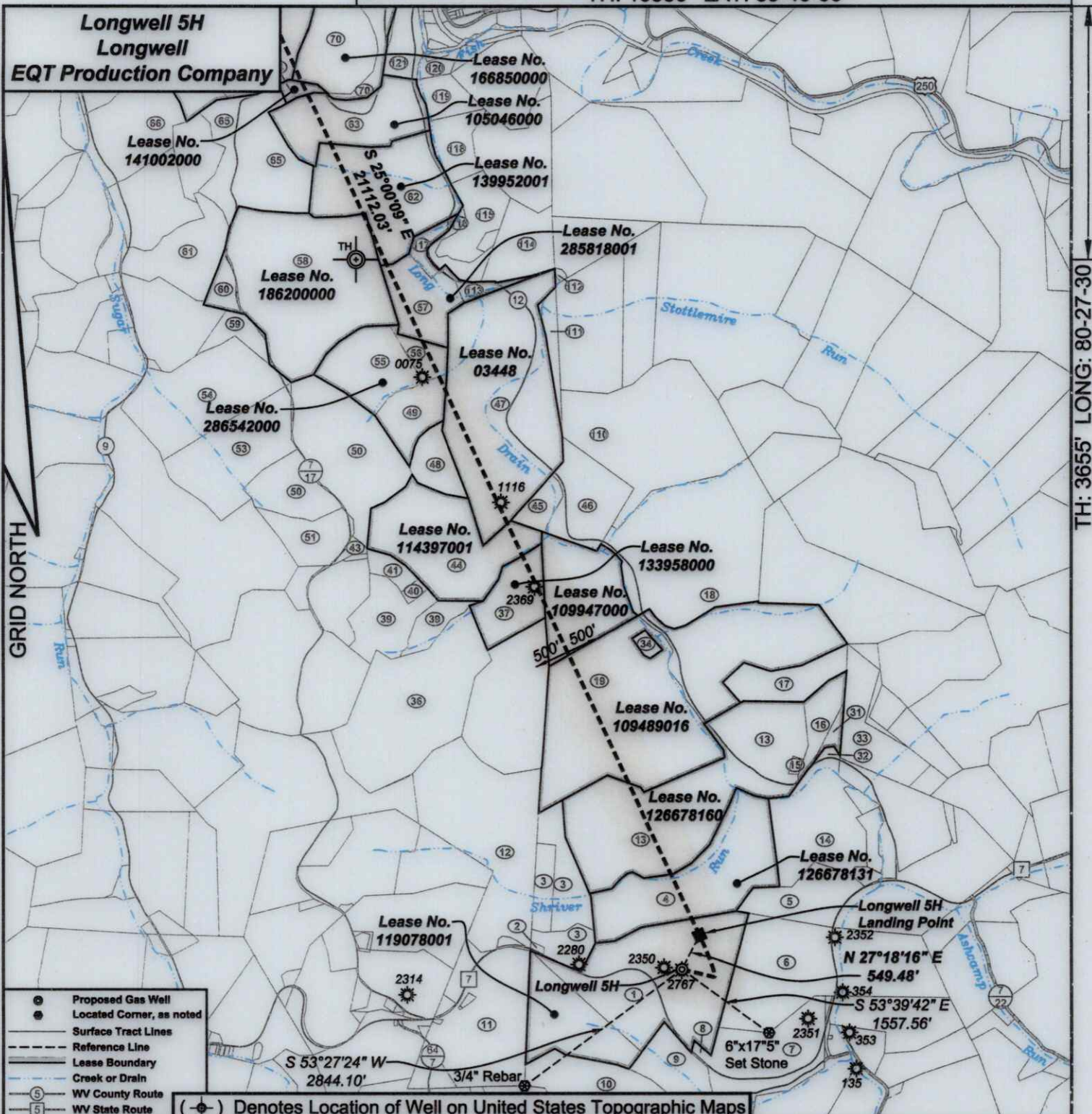


TH: 10356' LAT: 39-40-00

TH: 3655' LONG: 80-27-30



I, the undersigned, hereby certify that this plat is correct to the best of my knowledge and belief and shows all the information required by law and the regulations issued and prescribed by the Department of Environmental Protection.

Ben R. Singleton

P.S. 2092



FILE NO: 14-24
 DRAWING NO: Longwell 5H
 SCALE: 1" = 2000'
 MINIMUM DEGREE OF ACCURACY: 1:2500
 PROVEN SOURCE OF ELEVATION: NGS CORS Station

STATE OF WEST VIRGINIA
 DEPARTMENT OF ENVIRONMENTAL PROTECTION
OIL AND GAS DIVISION

DATE: March 03 20 26
 OPERATOR'S WELL NO.: Longwell 5H
 API WELL NO
 47 - 103 - 03700
 STATE COUNTY PERMIT

WELL TYPE: OIL GAS LIQUID INJECTION WASTE DISPOSAL
 (IF GAS) PRODUCTION: STORAGE DEEP SHALLOW
 LOCATION: ELEVATION: As-Built: 1435' WATERSHED Long Drain of West Virginia Fork Fish Creek QUADRANGLE: Hundred
 DISTRICT: Church and Clay COUNTY: Wetzel
 SURFACE OWNER: Jeffery Todd Longwell ACREAGE: 106.50
 ROYALTY OWNER: Jeffery Todd Longwell, et al LEASE NO: 119078001 ACREAGE: 106.50
 PROPOSED WORK: DRILL CONVERT DRILL DEEPER FRACTURE OR STIMULATE PLUG OFF OLD FORMATION
 PERFORATE NEW FORMATION OTHER PHYSICAL CHANGE IN WELL (SPECIFY)
 PLUG AND ABANDON CLEAN OUT AND REPLUG TARGET FORMATION: Marcellus ESTIMATED DEPTH: 7,711'

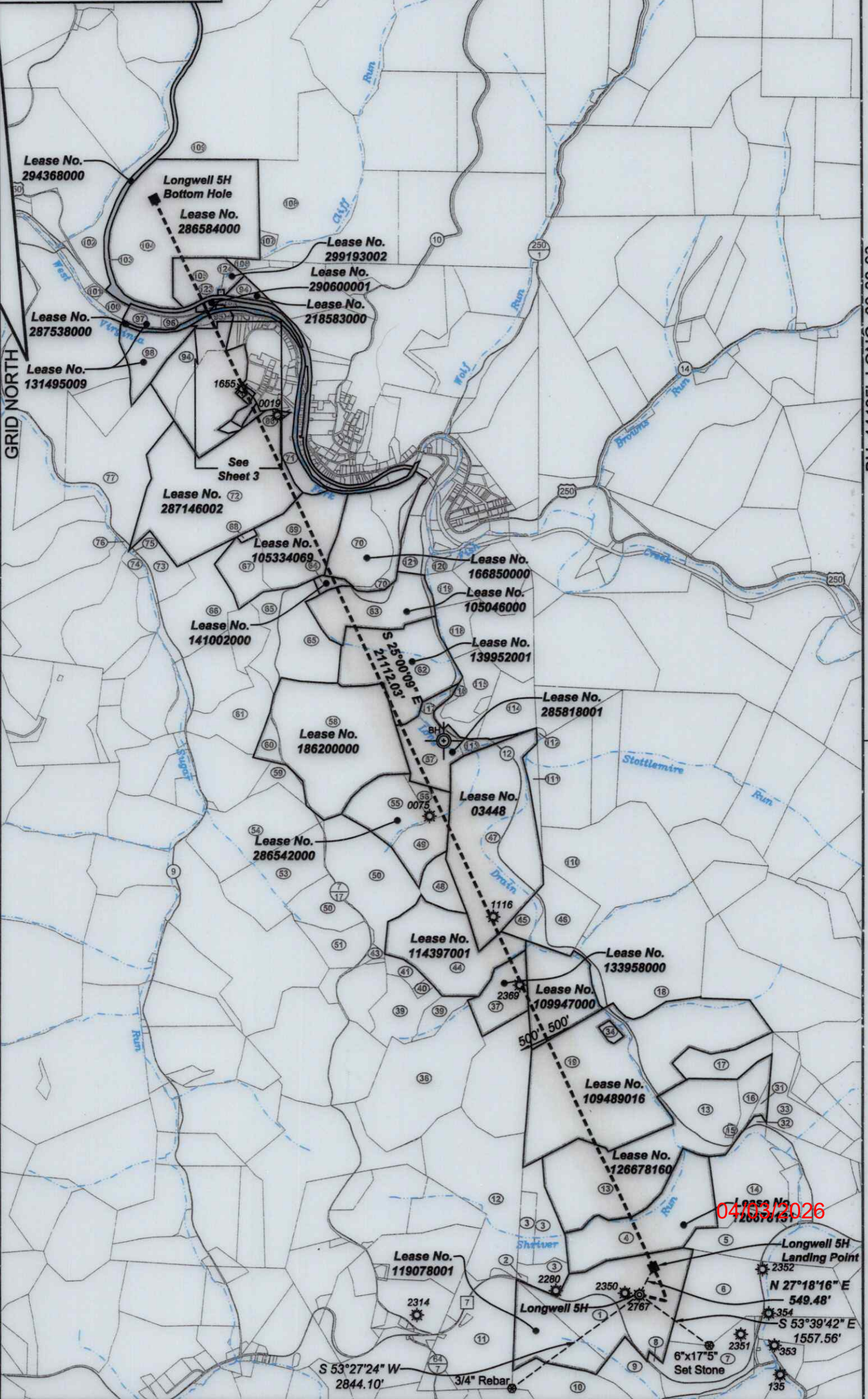
WELL OPERATOR: EQT Production Company DESIGNATED AGENT: Joseph C. Mallow
 ADDRESS: 2200 Energy Drive ADDRESS: 427 Midstate Drive
 Canonsburg, PA 15317 Clarksburg, WV 26301

04/03/2026

BH: 7514' LAT: 39-45-00

**Longwell 5H
Longwell
EQT Production Company**

Pennsylvania
West Virginia



BH: 14485' LONG: 80-30-00

04/03/2026

Longwell 5H
Landing Point
 N 27°18'16" E
549.48'
 S 53°39'42" E
1557.56'

S 53°27'24" W
2844.10'

6"x17"5"
Set Stone

Longwell 5H

3/4" Rebar

GRID NORTH

**Longwell 5H
Longwell
EQT Production Company**

GRID NORTH

Lease No.
218583000

Lease No.
295443001

1655
Lease No.
03816

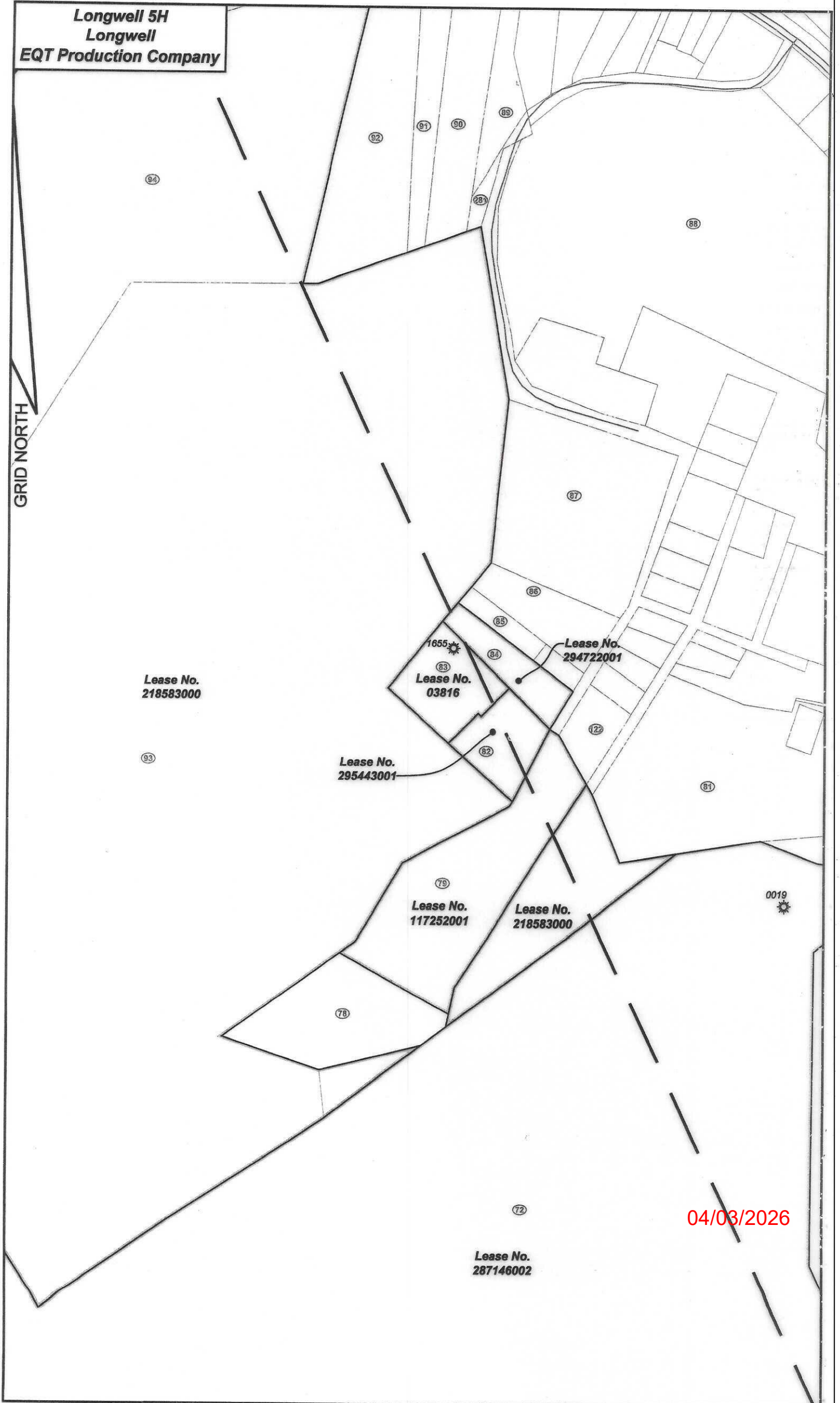
Lease No.
294722001

Lease No.
117252001

Lease No.
218583000

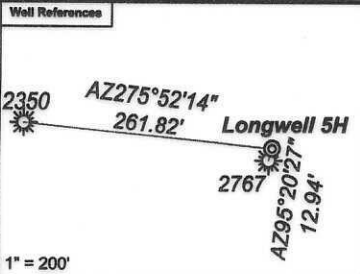
Lease No.
287146002

04/03/2026



**Longwell 5H
Longwell
EQT Production Company**

Tract I.D.	Tax Map No.	Parcel No.	County District	Surface Tract Owner	Acres
1	10	13	Wetzel Church	Jeffery T Longwell	106.5
2	10	11	Wetzel Church	Learn L. Harris & Penny L. Sole	0.5
3	10	4	Wetzel Church	Leia J. LeMasters	33.09
4	10	5	Wetzel Church	Bruce & Linda Garrison	61.5
5	8	29	Wetzel Church	Larry V. Watson, et al.	17.86
6	10	15	Wetzel Church	Charles L. Miller	80
7	10	23	Wetzel Church	John R. Rice	33
8	10	22	Wetzel Church	Pell Hill Chapel	1.8
9	10	21	Wetzel Church	Charles L. Mathews	20
10	10	20	Wetzel Church	Catherine Roberts, et al.	50
11	10	12	Wetzel Church	Harriet I. Tuslin	56.32
12	7	19	Wetzel Clay	McLach Land LLC	73.211
13	6	23	Wetzel Church	Bruce & Linda Garrison	124
14	6	25	Wetzel Church	Larry V. Watson, et al.	40.83
15	8	24	Wetzel Church	Shirley Cemetery	0.88
16	6	12	Wetzel Church	Edward M. Baldauf, et al.	9.04
17	7	11	Wetzel Clay	Edward M. Baldauf, et al.	20.5
18	7	8	Wetzel Clay	Paul R. Curry, et al.	130
19	7	12	Wetzel Clay	Wilda M. Church & Peggy Brown	209.35
31	6	13	Wetzel Church	Edward M. Baldauf, et al.	2.9
32	6	14.1	Wetzel Church	Edward M. Baldauf, et al.	1.24
33	8	15	Wetzel Church	Edward M. Baldauf, et al.	28.5
34	7	12.1	Wetzel Clay	Wilda Church	2.15
36	7	14	Wetzel Clay	Ridgetop Appalachia LLC	85.25
37	7	13	Wetzel Clay	Howard W. Peirish, Jr.	24.5
39	7	15	Wetzel Clay	Larry Majors & Steve Armstrong	32.4
40	7	15.2	Wetzel Clay	Stephen Armstrong	1.7
41	7	15.1	Wetzel Clay	Paul Parker	4.74
43	7	2.1	Wetzel Clay	Howard W. Peirish, Jr.	2
44	7	4	Wetzel Clay	Howard W. Peirish, Jr.	52.5
45	7	6	Wetzel Clay	Stephen T. Varner	7
46	7	7	Wetzel Clay	William A. Myers II	29.8
47	4	48	Wetzel Clay	Stephen T. Varner	115.3
48	7	5	Wetzel Clay	Stephen T. Varner	12.8
49	4	50.1	Wetzel Clay	Richard L. Wise	23.05
50	7	3	Wetzel Clay	Morris Family Irrevocable Trust	71.3
51	7	2.5	Wetzel Clay	Bernard W. Schmitt	15.82
53	7	1	Wetzel Clay	Trust of The Atonement Inc.	43
54	1	51	Wetzel Clay	Trust of The Atonement Inc.	61.5
55	4	50	Wetzel Clay	Richard L. Wise	28.2
56	4	48	Wetzel Clay	Jack & Linda Mason	7.46
57	1	33	Wetzel Clay	Jack & Linda Mason	19.08
58	4	32	Wetzel Clay	Coastal Forest Resources Company	92
59	4	31	Wetzel Clay	Brian K. Rollan	10
60	1	32.1	Wetzel Clay	Cokie M. Dilton	8
61	4	29	Wetzel Clay	Goldie M. Britton	26
62	4	25	Wetzel Clay	Ralph M. Crouse	56.5
63	1	28	Wetzel Clay	Susan J. Minor	58.3
64	4	27	Wetzel Clay	Susan J. Minor	3.3
65	4	28	Wetzel Clay	Susan J. Minor	51.3
66	5	18	Wetzel Clay	Cynthia I. Shipman, et al.	44.5
67	1	2	Wetzel Clay	Bradley A. Calp	16.9
68	4	2.1	Wetzel Clay	Bradley A. Calp	1
69	4	3	Wetzel Clay	Bradley A. Calp	42.5
70	1	1	Wetzel Clay	Godwin Living Trust	48.5
71	2L	66	Wetzel Clay	Kenneth C. Shrove, et al.	17
72	4	1	Wetzel Clay	Gregory B. Null	116.3
73	5	15	Wetzel Clay	Charles H. & Penny J. Hamilton	15.58
74	5	18	Wetzel Clay	EQI Gathering LLC	1.69
75	5	15.1	Wetzel Clay	Carl B. & Sharon Marshall	0.175
76	5	13	Wetzel Clay	Lee Booth, et al.	1
77	5	14	Wetzel Clay	Robert P. Roberts	65
78	4	55	Wetzel Clay	Tony A. Moore	1
79	4	58	Wetzel Clay	Robert W. Carrison	2.17
80	1L	24	Wetzel Clay	Catherine Hamilton	1.79
81	1L	25	Wetzel Clay	William A. McGilumphy, et al.	3.25
82	8	15	Wetzel Clay	Rita Roberts	0.54
83	8	16	Wetzel Clay	LUU Corporation	0.88
84	8	14	Wetzel Clay	Ananias A. Derby	0.42
85	8	12	Wetzel Clay	Robert W. Carrison	0.17
86	8	11	Wetzel Clay	Christine Robinson, et al.	0.564
87	1L	16	Wetzel Clay	Robert P. Roberts	2.0526
88	2	53	Wetzel Clay	Rita Roberts	7
89	8	28	Wetzel Clay	Candy Simms, et al.	0.43
90	8	27	Wetzel Clay	Candy Simms, et al.	0.944
91	8	28.1	Wetzel Clay	Jamie L. Nolan, et al.	0.57
92	8	28	Wetzel Clay	Jamie L. Nolan, et al.	1.93
93	2	56	Wetzel Clay	Rita Roberts	37.9
94	2	55.2	Wetzel Clay	Robert J. & Sylvia Schurr	37.28
95	2	55.1	Wetzel Clay	Clenna J. McDougal	2.721
96	2	29	Wetzel Clay	William L. Wharton	4.1
97	2	27	Wetzel Clay	William L. Wharton	6
98	2	28	Wetzel Clay	William L. Wharton	20
100	2	28	Wetzel Clay	Evelyn L. Wharton	3.1
101	2	25.1	Wetzel Clay	Bradley L. Stella L. State	1.21
102	2	21	Wetzel Clay	Eric M. Wade, et al.	11.62
103	2	83	Wetzel Clay	CNX Land LLC	81.94
104	2	20	Wetzel Clay	Kevin N. Soles, et al.	137.2
105	2	31	Wetzel Clay	Tamara Fischer-Sprowls, et al.	20
106	2	32	Wetzel Clay	Tamara Fischer-Sprowls	2.2
107	2	19.1	Wetzel Clay	Kevin N. Soles	3
108	2	19	Wetzel Clay	Donna D. Soles	101.4
109	2	6	Wetzel Clay	Sarah F. Fitzgerald Finkle, et al.	160
110	4	46	Wetzel Clay	William Myers	77.7
111	4	42	Wetzel Clay	Tim Williams	8
112	1	40	Wetzel Clay	Ily Lake	0.5
113	4	39	Wetzel Clay	Jennifer .bbcs	4.4
114	4	38	Wetzel Clay	FN Murphy	20.2
115	4	36	Wetzel Clay	Dallison Lumber Inc.	11.8
116	4	35	Wetzel Clay	Walter Longwell	1.2
117	4	34	Wetzel Clay	William White	8.5
118	1	24	Wetzel Clay	Dallison Lumber Inc.	10.3
119	4	53	Wetzel Clay	Maureen Mackey	7.05
120	4	53.1	Wetzel Clay	Maureen Mackey	3.4
121	4	57	Wetzel Clay	David Milk	9.88
122	1L	28	Wetzel Clay	Hubert Garrison	0.01
123	2	30	Wetzel Clay	Lillian Wise	0.5
124	2	61	Wetzel Clay	Tamara Fischer-Sprowls	0.5
281	8	22	Wetzel Clay	Candy Simms, et al.	0.54



Notes:
 Longwell 5H coordinates are
 NAD 27 N: 422,823.51 E: 1,719,828.82
 NAD 27 Lat: 39.656634 Long: -80.495116
 NAD 83 UTM N: 4,389,779.23 E: 543,328.64
 Longwell 5H Landing Point coordinates are
 NAD 27 N: 423,311.77 E: 1,720,080.87
 NAD 27 Lat: 39.657982 Long: -80.494240
 NAD 83 UTM N: 4,389,929.27 E: 543,402.95
 Longwell 5H Bottom Hole coordinates are
 NAD 27 N: 442,445.35 E: 1,711,157.67
 NAD 27 Lat: 39.710234 Long: -80.526708
 NAD 83 UTM N: 4,395,713.11 E: 540,587.22
 West Virginia Coordinate system of 1927 (North Zone)
 based upon Differential GPS Measurements.
 Plat orientation, corner and well ties are based upon
 the grid north meridian.
 Well location references are based upon the grid north
 meridian.
 UTM coordinates are NAD83, Zone 17, Meters.

- Longwell 11H ©
- Longwell 9H ©
- Longwell 7H ©
- Longwell 5H ©
- Longwell 1H ©
- Longwell 3H ©

Lease No.	Owner	Acres
119078001	Jeffery Todd Longwell, et al.	106.5
126678131	Nancy Dawn Cosgray, et al.	61.5
126678160	Stone Hill Mineral Holdings, LLC, et al.	194
109489016	Peggy Church Brown, et al.	170
109947000	Peggy Church Brown, et al.	31.307949 of 140
133958000	Liberty Holding Company	24.50 of 97.71
114397001	Thomas J. Iacoboni, Trustee of the Thomas J. Iacoboni Revocable Trust Agreement, dated 5/15/2018, et al.	52.50
03448	Steve Varner	115.30 of 153.33
286542000	Liberty Holding Company	58.71
285818001	Country Roads Minerals LLC, et al.	36
139952001	Michael J. Prendergast, et al.	56.5
186200000	Three Rivers Royalty, II, LLC, et al.	92 of 250
105046000	Mary Joliffe Henry, et al.	38.25
141002000	Ronald K. Minor, et al.	3.25
166850000	AMP IV, LP, et al.	48.5
105334069	Bounty Minerals, LLC, et al.	59.40 of 464.95
287146002	William J. Grottenleck, III, et al.	116.25
218583000	Bounty Minerals, LLC, et al.	89.409
117252001	Mary K. Joliffe, et al.	3.17
295443001	Rita C. Roberts, et al.	0.5414
03816	EBTB Corporation, et al.	0.6837
294722001	W. Renee Speeler, et al.	0.42
287538000	West Virginia Division of Natural Resources	17.084151 of 38.187
131495009	Three Rivers Royalty II, LLC, et al.	28.2375
290600001	Charlotte Maxine Burdine	1.25
294368000	CNX Gas Company, LLC	60.45
299193002	Tamara Fischer-Sprowls, et al.	20
286584000	Ridgetop Appalachia, LLC	137.425

