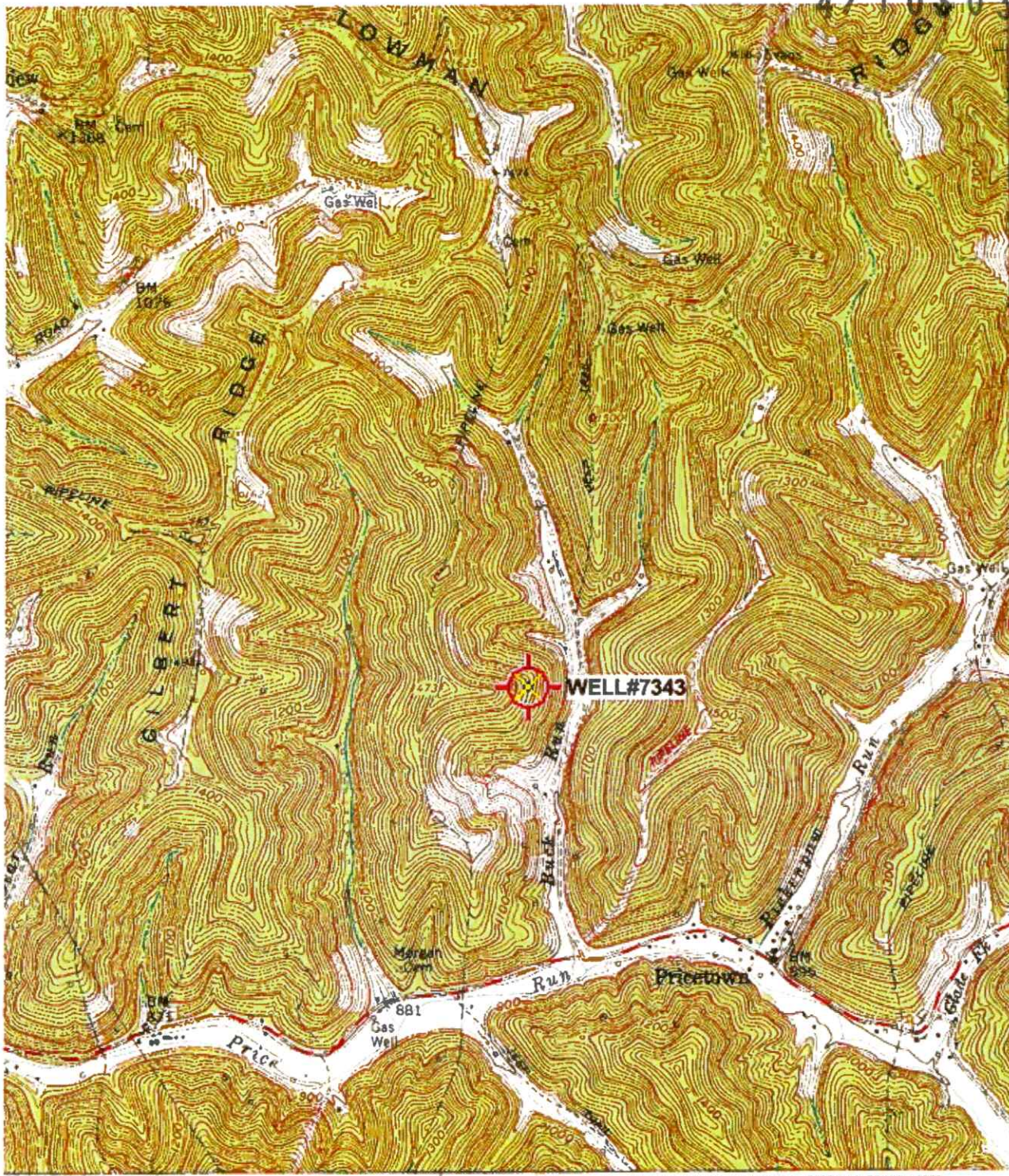


4710303722



32'30"

476

475

474

473

472

39°30'

80°30'

39 32'30" 40 41 42 80°30'

INTERIOR—GEOLOGICAL SURVEY, RESTON, VIRGINIA—1977  
642900mE



ROAD CLASSIFICATION

- Heavy-duty
- Medium-duty
- Light duty
- Unimproved dirt
- Slate Route



QUADRANGLE LOCATION

Revisions shown in purple compiled in cooperation with State of West Virginia agencies from aerial photographs taken 1976. This information not field checked.

(WALLACE)  
4862 N.W.M.  
RECEIVED  
Office of Oil and Gas  
FEB 25 2025

BIG RUN, W. VA.  
SE/4 LITTLETON 15' QUADRANGLE  
N3930—W8030/7.5

WV Department of Environmental Protection

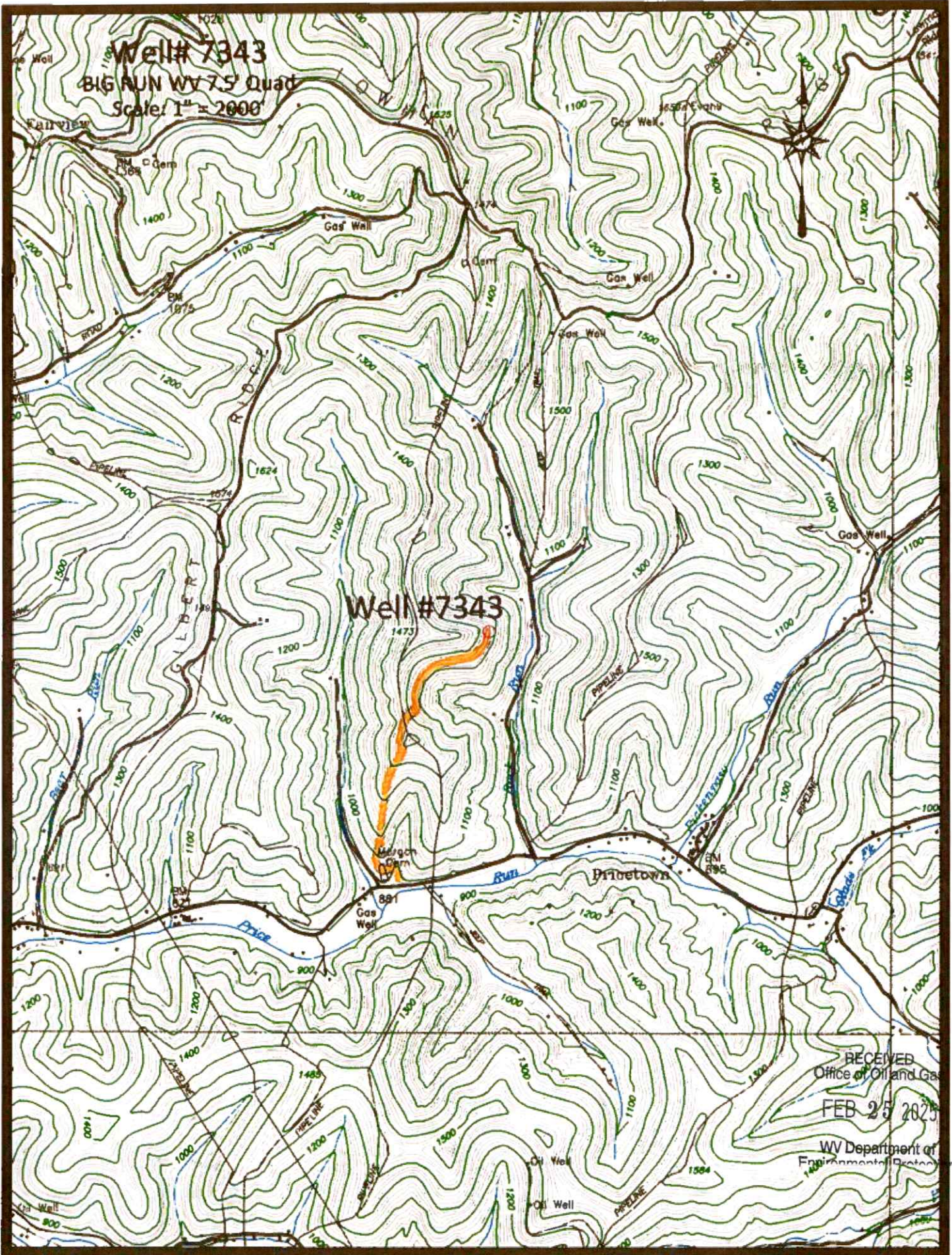
1960  
PHOTOREVISED 1976  
AMS 4863 II SE—SERIES V854

QUEST

'Big Run; WV Scale: 1" = 0.379Mi 610Mt 2,000Ft, 1 Mi = 2.640" , 1 cm = 240Mt


03/14/2025

Well# 7343  
BIG RUN WV 7.5' Quad  
Scale: 1" = 2000'



RECEIVED  
Office of Oil and Gas  
FEB 25 2025

WV Department of  
Environmental Protection

 Access Road

03/14/2025

Well# 7343

BIG RUN WV 7.5' Quad  
Scale: 1" = 500'



1100

Well# 7343

1473

Run

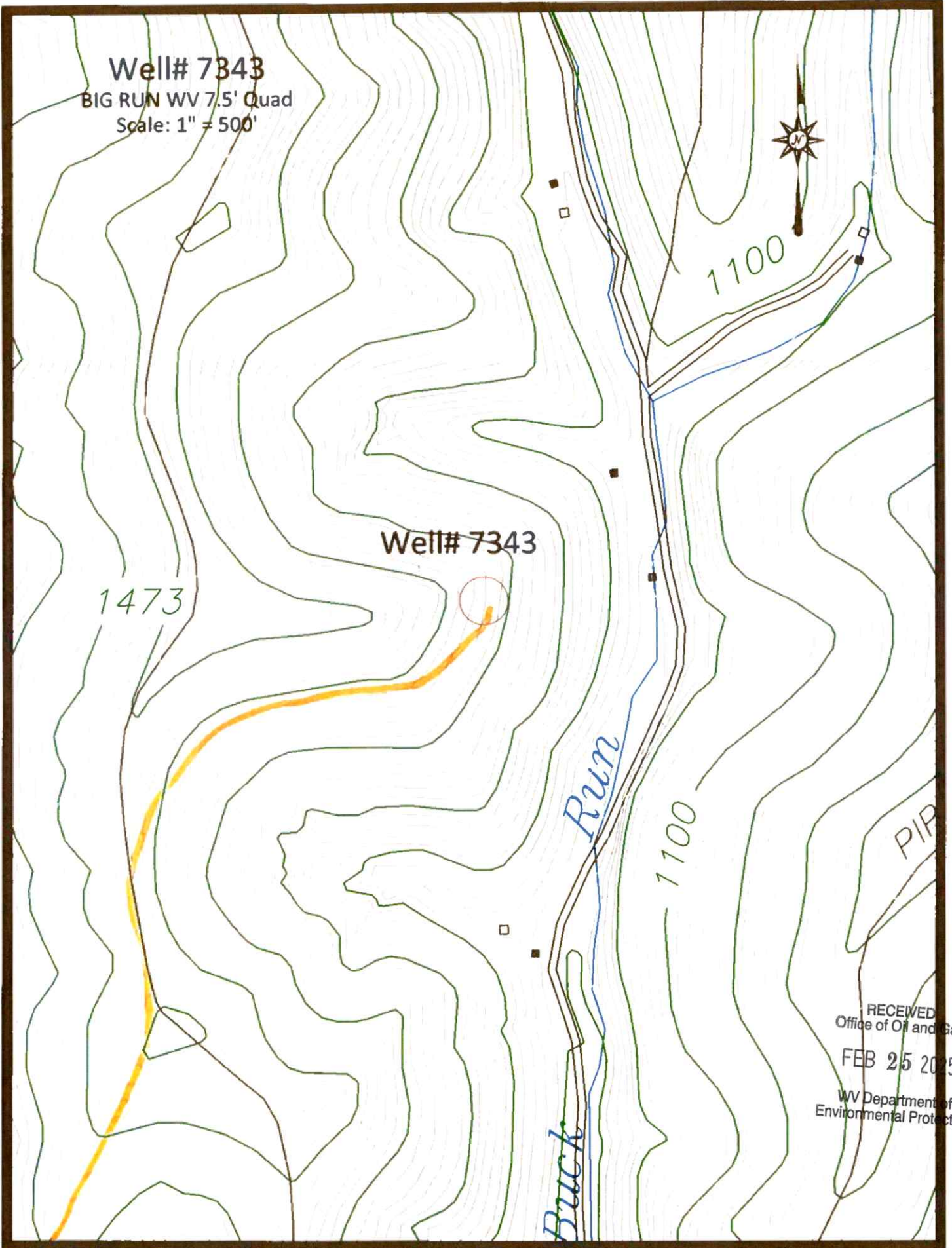
1100

PIP

RECEIVED  
Office of Oil and Gas  
FEB 25 2025  
WV Department of  
Environmental Protection

Access Road

03/14/2025



4710303722

WW-7  
8-30-06



West Virginia Department of Environmental Protection  
Office of Oil and Gas  
**WELL LOCATION FORM: GPS**

API: 47-103- WELL NO.: 7343

FARM NAME: ENSMINGER

RESPONSIBLE PARTY NAME: WEST VIRGINIA LAND RESOURCES INC.

COUNTY: WETZEL DISTRICT: GRANT

QUADRANGLE: BIG RUN WV

SURFACE OWNER: R L ENSMINGER

ROYALTY OWNER: \_\_\_\_\_

UTM GPS NORTHING: 4,374,396 m

UTM GPS EASTING: 540,985 m GPS ELEVATION: 384 m

The Responsible Party named above has chosen to submit GPS coordinates in lieu of preparing a new well location plat for a plugging permit or assigned API number on the above well. The Office of Oil and Gas will not accept GPS coordinates that do not meet the following requirements:

1. Datum: NAD 1983, Zone: 17 North, Coordinate Units: meters, Altitude: height above mean sea level (MSL) – meters.

2. Accuracy to Datum – 3.05 meters

3. Data Collection Method:

Survey grade GPS  : Post Processed Differential

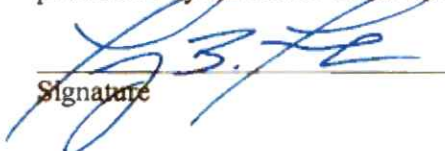
Real-Time Differential \_\_\_\_\_

Mapping Grade GPS \_\_\_\_\_ : Post Processed Differential \_\_\_\_\_

Real-Time Differential \_\_\_\_\_

4. Letter size copy of the topography map showing the well location.

I the undersigned, hereby certify this data is correct to the best of my knowledge and belief and shows all the information required by law and the regulations issued and prescribed by the Office of Oil and Gas.

  
Signature

PS 2002

Title

FEBRUARY 8, 2025

Date

RECEIVED  
Office of Oil and Gas

FEB 25 2025

WV Department of  
Environmental Protection

03/14/2025