

I, the undersigned, hereby certify that this plat is correct to the best of my knowledge and belief and shows all the information required by law and the regulations issued and prescribed by the Department of Environmental Protection.

Ben R. Singleton
P.S. 2092



SEAL

FILE NO: 14-24
DRAWING NO: Longwell 7H
SCALE: 1" = 2000'
MINIMUM DEGREE OF ACCURACY: 1:2500
PROVEN SOURCE OF ELEVATION: NGS CORS Station

STATE OF WEST VIRGINIA
DEPARTMENT OF ENVIRONMENTAL PROTECTION
OIL AND GAS DIVISION

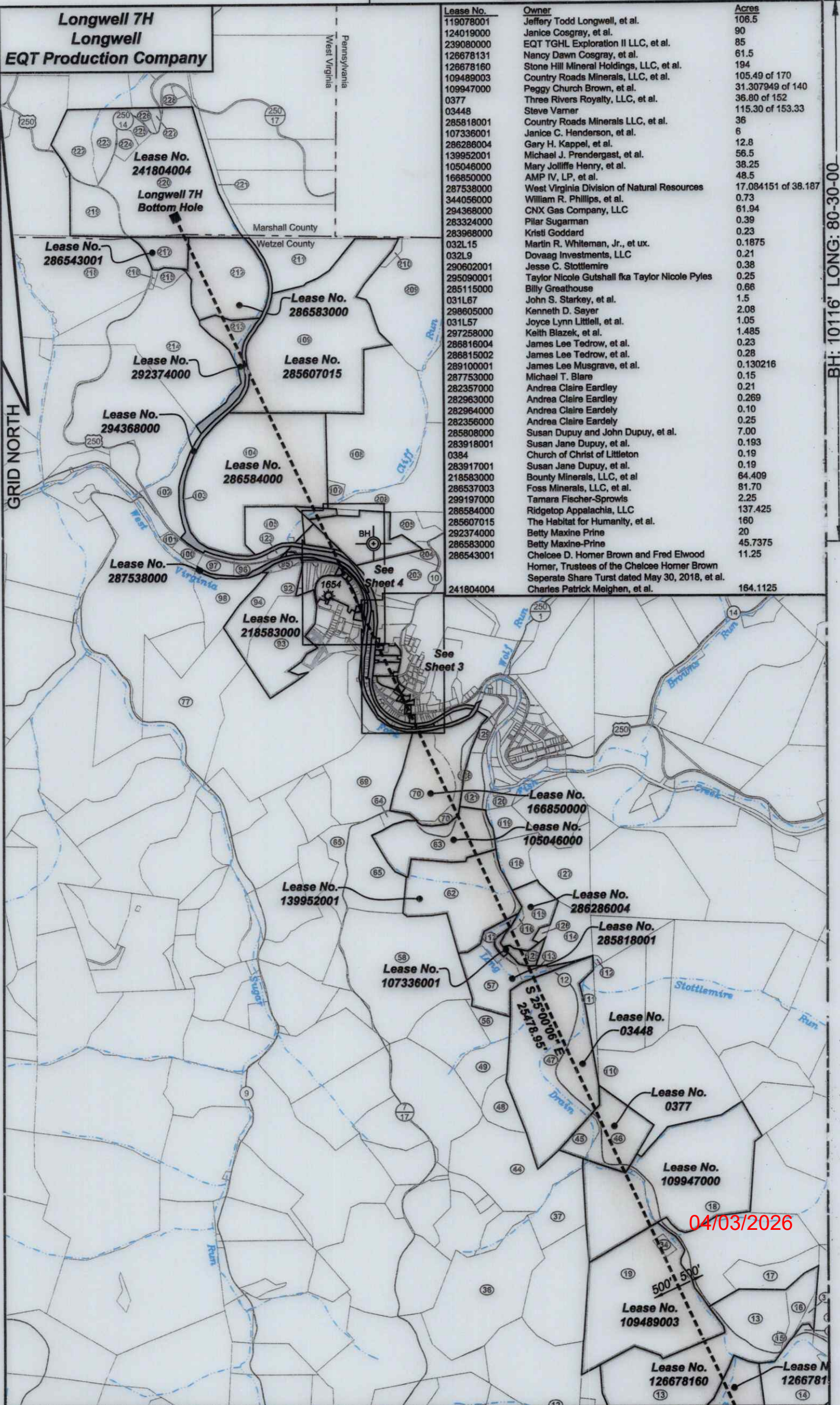
DATE: March 03 20 26
OPERATOR'S WELL NO.: Longwell 7H
API WELL NO
47 - 103 - 03758
STATE COUNTY PERMIT

WELL TYPE: OIL GAS LIQUID INJECTION WASTE DISPOSAL
(IF GAS) PRODUCTION: STORAGE DEEP SHALLOW
LOCATION: ELEVATION: As-Built: 1435' WATERSHED Long Drain of West Virginia Fork Fish Creek QUADRANGLE: Hundred
DISTRICT: Church and Clay COUNTY: Wetzel 04/03/2026
SURFACE OWNER: Jeffery Todd Longwell ACREAGE: 106.50
ROYALTY OWNER: Jeffery Todd Longwell, et al LEASE NO: 119078001 ACREAGE: 106.50
PROPOSED WORK: DRILL CONVERT DRILL DEEPER FRACTURE OR STIMULATE PLUG OFF OLD FORMATION
 PERFORATE NEW FORMATION OTHER PHYSICAL CHANGE IN WELL (SPECIFY)
 PLUG AND ABANDON CLEAN OUT AND REPLUG TARGET FORMATION: Marcellus ESTIMATED DEPTH: 7,711'

WELL OPERATOR: EQT Production Company DESIGNATED AGENT: Joseph C. Mallow
ADDRESS: 2200 Energy Drive ADDRESS: 427 Midstate Drive
Canonsburg, PA 15317 Clarksburg, WV 26301

BH: 8502' LAT: 39-45-00

**Longwell 7H
Longwell
EQT Production Company**



Lease No.	Owner	Acres
119078001	Jeffery Todd Longwell, et al.	106.5
124019000	Janice Cosgray, et al.	90
239080000	EQT TGH Exploration II LLC, et al.	85
126678131	Nancy Dawn Cosgray, et al.	61.5
126678160	Stone Hill Mineral Holdings, LLC, et al.	194
109489003	Country Roads Minerals, LLC, et al.	105.49 of 170
109947000	Peggy Church Brown, et al.	31.307949 of 140
0377	Three Rivers Royalty, LLC, et al.	36.80 of 152
03448	Steve Varner	115.30 of 153.33
285818001	Country Roads Minerals LLC, et al.	36
107336001	Janice C. Henderson, et al.	6
286286004	Gary H. Kappel, et al.	12.8
139952001	Michael J. Prendergast, et al.	56.5
105046000	Mary Jolliffe Henry, et al.	38.25
166850000	AMP IV, LP, et al.	48.5
287538000	West Virginia Division of Natural Resources	17.084151 of 38.187
344056000	William R. Phillips, et al.	0.73
294368000	CNX Gas Company, LLC	61.94
283324000	Pilar Sugarman	0.39
283968000	Kristi Goddard	0.23
032L15	Martin R. Whiteman, Jr., et ux.	0.1875
032L9	Dovaag Investments, LLC	0.21
290602001	Jesse C. Stottlemire	0.38
295090001	Taylor Nicole Gutshall fka Taylor Nicole Pyles	0.25
285115000	Billy Greathouse	0.66
031L67	John S. Starkey, et al.	1.5
298605000	Kenneth D. Sayer	2.08
031L57	Joyce Lynn Littell, et al.	1.05
297258000	Keith Blazek, et al.	1.485
286816004	James Lee Tedrow, et al.	0.23
286815002	James Lee Tedrow, et al.	0.28
289100001	James Lee Musgrave, et al.	0.130216
287753000	Michael T. Blare	0.15
282357000	Andrea Claire Eardley	0.21
282963000	Andrea Claire Eardley	0.269
282964000	Andrea Claire Eardley	0.10
282356000	Andrea Claire Eardley	0.25
285808000	Susan Dupuy and John Dupuy, et al.	7.00
283918001	Susan Jane Dupuy, et al.	0.193
0384	Church of Christ of Littleton	0.19
283917001	Susan Jane Dupuy, et al.	0.19
218583000	Bounty Minerals, LLC, et al	64.409
286537003	Foss Minerals, LLC, et al.	81.70
299197000	Tamara Fischer-Sprows	2.25
286584000	Ridgetop Appalachia, LLC	137.425
285607015	The Habitat for Humanity, et al.	160
292374000	Betty Maxine Prine	20
286583000	Betty Maxine-Prine	45.7375
286543001	Chelcee D. Homer Brown and Fred Elwood Homer, Trustees of the Chelcee Homer Brown Separate Share Trust dated May 30, 2018, et al.	11.25
241804004	Charles Patrick Meighen, et al.	164.1125

BH: 10116' LONG: 80-30-00

04/03/2026

**Longwell 7H
Longwell
EQT Production Company**

GRID NORTH

Lease No.
282357000

Lease No.
287753000

Lease No.
289100001

Lease No.
297258000

Lease No.
286815002

Lease No.
286816004

Lease No.
031L57

Lease No.
298605000

Lease No.
031L67

Lease No.
285115000

Lease No.
295090001

Lease No.
290602001

Lease No.
032L9

Lease No.
032L15

Lease No.
283968000

Lease No.
283324000

Lease No.
294368000

Lease No.
344056000

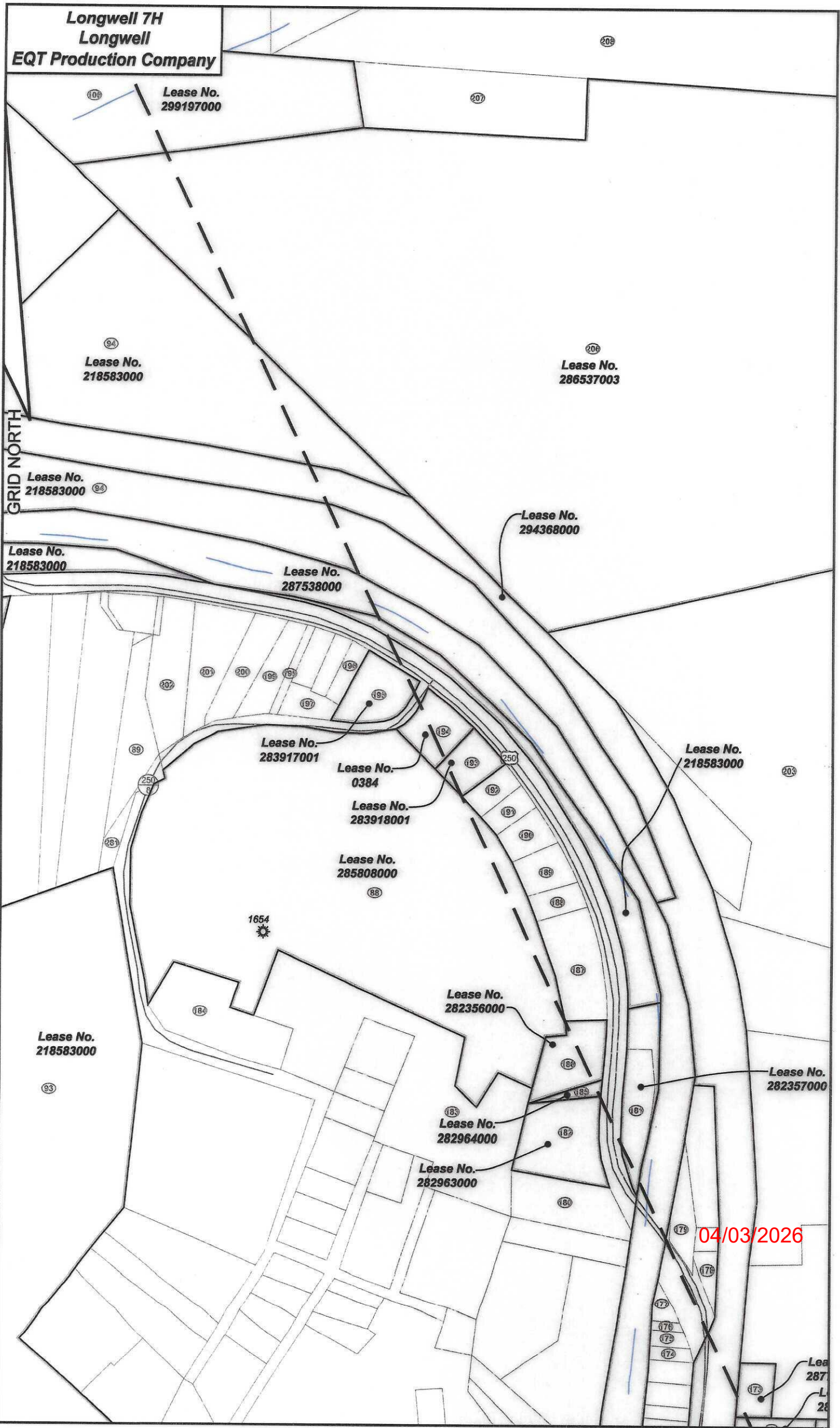
Lease No.
287538000

04/03/2026

Fork

250

**Longwell 7H
Longwell
EQT Production Company**

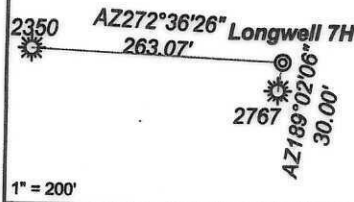


04/03/2026

Lea
287
L
28

Longwell 7H
Longwell
EQT Production Company

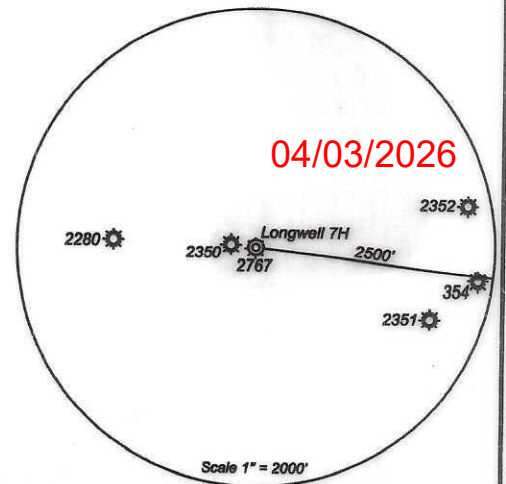
Well References



Notes:
Longwell 7H coordinates are
NAD 27 N: 422,836.32 E: 1,719,831.17
NAD 27 Lat: 39.656675 Long: -80.491038
NAD 83 UTM N: 4,389,783.76 E: 543,329.28
Longwell 7H Landing Point coordinates are
NAD 27 N: 423,734.40 E: 1,720,987.16
NAD 27 Lat: 39.659170 Long: -80.491038
NAD 83 UTM N: 4,390,062.64 E: 543,676.92
Longwell 7H Bottom Hole coordinates are
NAD 27 N: 446,825.85 E: 1,740,248.62
NAD 27 Lat: 39.722230 Long: -80.530225
NAD 83 UTM N: 4,397,042.90 E: 540,278.88
West Virginia Coordinate system of 1927 (North Zone)
based upon Differential GPS Measurements.
Plat orientation, corner and well ties are based upon
the grid north meridian.
Well location references are based upon the grid north
meridian.
UTM coordinates are NAD83, Zone 17, Meters.

Tract I.D.	Tax Map No.	Parcel No.	County	District	Surface Tract Owner	Acres
1	10	13	Wetzel	Church	Jeffrey T Longwell	108.5
2	10	14	Wetzel	Church	Leann L Harris & Penny L. Sole	0.5
3	10	4	Wetzel	Church	John J. Whitman	33.09
4	10	5	Wetzel	Church	Bruce & Linda Garrison	61.5
5	6	20	Wetzel	Church	Larry V. Watson, et al	17.86
6	10	15	Wetzel	Church	Charles L. Miller	90
7	10	23	Wetzel	Church	John R. Rice	33
8	10	22	Wetzel	Church	Deil Hill Chapel	1.8
9	10	21	Wetzel	Church	Charles I. Mathews	28
10	10	20	Wetzel	Church	Catherine Roberts, et al.	50
11	10	12	Wetzel	Church	Herald I. Tualin	56.32
12	7	19	Wetzel	Clay	McLach Land LLC	73.211
13	6	23	Wetzel	Church	Bruce & Linda Garrison	124
14	6	25	Wetzel	Church	Larry V. Watson, et al.	10.83
15	6	24	Wetzel	Church	Shriver Cemetery	0.88
16	6	12	Wetzel	Church	Edward M. Baldauf, et al.	9.04
17	7	11	Wetzel	Clay	Edward M. Baldauf, et al.	20.5
18	7	8	Wetzel	Clay	Paul R. Curry, et al	130
19	7	12	Wetzel	Clay	Wilda M. Church & Peggy Brown	209.35
20	10	25	Wetzel	Church	Allie K. Cunningham	23
21	10	16	Wetzel	Church	Nicholas L. & Joseph K. Latham	27
22	10	7	Wetzel	Church	David R. Whitson, et al	8.5
23	10	6	Wetzel	Church	Nicholas L. & Joseph K. Latham	48.39
24	8	26	Wetzel	Church	Thomas Chapel	1.4
31	6	13	Wetzel	Church	Edward M. Baldauf, et al.	2.9
32	8	14.1	Wetzel	Church	Edward M. Baldauf, et al	1.24
33	6	15	Wetzel	Church	Edward M. Baldauf, et al.	20.5
34	7	12.1	Wetzel	Clay	Wilda Church	2.15
36	7	11	Wetzel	Clay	Ridgetop Appalachia LLC	85.25
37	7	13	Wetzel	Clay	Howard W. Parrish, Jr	24.5
41	7	4	Wetzel	Clay	Howard W. Parrish, Jr.	52.5
45	7	6	Wetzel	Clay	Stephen T. Varner	7
46	7	7	Wetzel	Clay	William A. Myers II	29.8
47	4	48	Wetzel	Clay	Stephen T. Varner	115.3
48	7	5	Wetzel	Clay	Stephen T. Varner	12.8
49	4	50.1	Wetzel	Clay	Richard I. Wise	23.05
56	4	19	Wetzel	Clay	Jack & Linda Mason	7.46
57	4	33	Wetzel	Clay	Jack & Linda Mason	19.08
58	4	32	Wetzel	Clay	Coastal Forest Resources Company	92
62	4	25	Wetzel	Clay	Ralph M. Crouse	56.5
63	4	26	Wetzel	Clay	Susan J. Minor	38.3
64	4	27	Wetzel	Clay	Susan J. Minor	3.3
65	4	28	Wetzel	Clay	Susan J. Minor	51.3
69	4	3	Wetzel	Clay	Bradley A. Calp	42.5
70	4	4	Wetzel	Clay	Godwin Living Trust	48.5
77	5	14	Wetzel	Clay	Robert P. Roberts	65
88	2	53	Wetzel	Clay	Rita Roberts	7
89	8	25	Wetzel	Clay	Candy Simms, et al.	0.43
92	8	26	Wetzel	Clay	Jamie I. Nolan, et al	1.93
93	2	56	Wetzel	Clay	Rita Roberts	37.9
94	2	55.2	Wetzel	Clay	Robert J. & Sylvia Schurr	37.28
95	2	55.1	Wetzel	Clay	Gienna J. McDougal	2.721
96	2	29	Wetzel	Clay	William I. Wharton	4.1
97	2	27	Wetzel	Clay	William L. Wharton	6
98	2	28	Wetzel	Clay	William I. Wharton	20
100	2	26	Wetzel	Clay	Evelyn L. Wharton	3.4
101	2	25.1	Wetzel	Clay	Bradley Estella Estate	1.21
102	2	21	Wetzel	Clay	Eric M. Woods, et al	11.62
103	2	63	Wetzel	Clay	CNX Land LLC	61.94
104	2	20	Wetzel	Clay	Kevin N. Soles, et al.	137.2
105	2	31	Wetzel	Clay	Tamara Fischer Sprowls, et al.	20
106	2	32	Wetzel	Clay	Tamara Fischer Sprowls	22
107	2	19.1	Wetzel	Clay	Kevin N. Soles	3
108	2	19	Wetzel	Clay	Dorcas D. Soles	101.4
109	2	6	Wetzel	Clay	Sarah F. Fitzgerald Estate, et al.	160
110	4	46	Wetzel	Clay	William Myers	77.7
111	4	42	Wetzel	Clay	Im Williams	6
112	4	40	Wetzel	Clay	Ty Blakk	0.5
113	4	39	Wetzel	Clay	Jennifer Jones	1.1
114	4	38	Wetzel	Clay	F N Murphy	20.2
115	4	36	Wetzel	Clay	Dallison Lumber Inc.	11.6
116	4	35	Wetzel	Clay	Walter Longwell	1.2
117	4	34	Wetzel	Clay	William White	8.5
118	4	24	Wetzel	Clay	Dallison Lumber Inc	10.3
119	4	53	Wetzel	Clay	Maureen Mackey	7.85
120	4	53.1	Wetzel	Clay	Maureen Mackey	3.4
121	4	57	Wetzel	Clay	David Milk	9.88
123	2	30	Wetzel	Clay	Lillian Wise	0.5
125	4	52	Wetzel	Clay	William Smith Estate	6
126	4	37	Wetzel	Clay	Hincy Holdings Inc.	1.2
127	4	22	Wetzel	Clay	F N Murphy	33.5
128	4	4.1	Wetzel	Clay	Kevin S. & Melinda S. Gott	0.39
129	4	4.2	Wetzel	Clay	Peter Parker	2.3
130	2L	63	Wetzel	Clay	Larry Wharton	0.25
131	2L	61	Wetzel	Clay	FQT	NA
132	2L	62	Wetzel	Clay	Annette Watson	0.165
133	2L	42	Wetzel	Clay	Peter Sugarman	0.158
134	2L	41	Wetzel	Clay	Peter Sugarman	0.391
135	2L	40	Wetzel	Clay	Mark Smith	0.21
136	2L	13	Wetzel	Clay	Krisb Goddard	
137	2L	14	Wetzel	Clay	Kristi Goddard	
138	2L	15	Wetzel	Clay	Martin Whiteman	0.1875
139	2L	16	Wetzel	Clay	Cynthia Hayes	0.09
140	2L	18	Wetzel	Clay	Cynthia Hayes	0.161
141	2L	9	Wetzel	Clay	Devaag Investments LLC	0.211
142	2L	10	Wetzel	Clay	Peter Parker	0.263
143	2L	7	Wetzel	Clay	Jessie Stottmire	0.382
144	2L	6	Wetzel	Clay	Taylor Pyle	0.25
145	1L	69	Wetzel	Clay	Billy Greathouse	0.2
146	1L	68	Wetzel	Clay	Billy Greathouse	0.664
148	2L	5	Wetzel	Clay	Hearty McCoy	0.245
149	2L	4	Wetzel	Clay	Billy Greathouse	0.461
150	2L	3	Wetzel	Clay	Billy Greathouse	0.28
151	1L	67	Wetzel	Clay	Carl Howard	1.5
153	2L	1	Wetzel	Clay	Elizabeth Johnson	0.271
154	1L	66	Wetzel	Clay	Elizabeth Johnson	0.15
155	1L	65	Wetzel	Clay	William Patterson	0.168

Tract I.D.	Tax Map No.	Parcel No.	County	District	Surface Tract Owner	Acres
156	1L	64	Wetzel	Clay	William Patterson	0.062
157	1L	63	Wetzel	Clay	William Patterson	0.008
158	1L	62	Wetzel	Clay	Dianna Pierce	0.103
159	1L	61	Wetzel	Clay	Dianna Pierce	0.037
160	1L	60	Wetzel	Clay	Kenneth Sayer	2
161	1L	60.1	Wetzel	Clay	Polcor Parker	0.026
162	1L	59	Wetzel	Clay	Peter Parker	0.058
163	1L	57	Wetzel	Clay	Joyce Little	1.05
164	1L	57.1	Wetzel	Clay	Kenneth Sayer	0.08
165	1L	56	Wetzel	Clay	Kenneth Sayer	1.22
166	1L	55	Wetzel	Clay	Dale Sayer	0.37
167	1L	50.1	Wetzel	Clay	Michael Blare	0.23
168	1L	54	Wetzel	Clay	Michael Blare	0.282
169	1L	53	Wetzel	Clay	Michael Blare	0.131
170	1L	58	Wetzel	Clay	Kevin Goff	0.08
171	1L	51	Wetzel	Clay	Donna Morris	0.6
172	1L	50	Wetzel	Clay	Donna Morris	3.4
173	1L	52	Wetzel	Clay	Michael Blare	0.152
174	1L	34	Wetzel	Clay	WV DOT	0.06
175	1L	33	Wetzel	Clay	WV DOT	0.072
176	1L	32	Wetzel	Clay	WV DOT	0.037
177	1L	32.1	Wetzel	Clay	Town of Littleton	0.121
178	1L	31	Wetzel	Clay	Lowell Waddle Jr.	0.07
179	1L	30.1	Wetzel	Clay	Timothy Jones	0.2
180	1L	23.3	Wetzel	Clay	Town of Littleton	0.72
181	1L	3	Wetzel	Clay	Littleton V-D	0.209
182	1L	4	Wetzel	Clay	Andrew Wade	0.584
183	2	52	Wetzel	Clay	Rita Roberts	1
184	8	10	Wetzel	Clay	Rita Roberts	0.5
185	1L	2	Wetzel	Clay	Andrew Wade	0.096
186	1L	1	Wetzel	Clay	Andrew Wade	0.25
187	8	9	Wetzel	Clay	Andrew Wade	0.55
188	8	9.1	Wetzel	Clay	Dianna Pierce	0.11
189	8	8	Wetzel	Clay	Andrew Wade	0.211
190	8	7	Wetzel	Clay	Nark Kumaravolan	0.162
191	8	6.1	Wetzel	Clay	Rosalie Glidewell	0.121
192	8	6	Wetzel	Clay	Rosalie Glidewell	0.125
193	8	5	Wetzel	Clay	Rosalie Glidewell	0.193
194	8	4	Wetzel	Clay	Church of Christ	0.194
195	8	3	Wetzel	Clay	Franklin Stottmire	0.2
196	8	2	Wetzel	Clay	Franklin Stottmire	0.185
197	8	1.1	Wetzel	Clay	Timothy White	0.12
198	8	17	Wetzel	Clay	Timothy White	0.067
199	8	16	Wetzel	Clay	Timothy White	0.29
200	8	19	Wetzel	Clay	Candy Simms	0.275
201	8	20	Wetzel	Clay	Candy Simms	0.33
202	8	21	Wetzel	Clay	Candy Simms	0.429
203	2	36	Wetzel	Clay	Constance Maighen	30.2
204	2	62	Wetzel	Clay	Thomas G. Maighen, et al	4
205	2	35	Wetzel	Clay	David Miller	13
206	2	34	Wetzel	Clay	Michael Wade	26.7
207	2	33	Wetzel	Clay	Kevin Goff	1.3
208	2	18	Wetzel	Clay	Michael Wade	55
209	2	7.1	Wetzel	Clay	Donna Soles	68.5
210	2	7	Wetzel	Clay	Kevin Soles	1.5
211	2	5	Wetzel	Clay	Thomas Bilinovich	31.5
212	2	4	Wetzel	Clay	Michael Prendergast	45.73
213	2	3	Wetzel	Clay	Michael Prendergast	20
214	2	2	Wetzel	Clay	Larry Gorby	70.63
215	2	2.2	Wetzel	Clay	Don Gorby	3.4
216	2	64	Wetzel	Clay	Don Gorby	0.53
217	2	1	Wetzel	Clay	Larry Gorby	11.2
218	1	2	Wetzel	Clay	Michael Prendergast	75.07
219	23	25	Marshall	Liberty	Steven Woodruff	17.75
220	23	16	Marshall	Liberty	Michael Prendergast	99.55
221	23	29	Marshall	Liberty	CNX Land LLC	124.8
222	23	21	Marshall	Liberty	Jeffrey Grant	18.7
223	23	20	Marshall	Liberty	Paul Lucas	12.375
224	23	5	Marshall	Liberty	Amos McPeck	4.0375
225	23	19	Marshall	Liberty	Alvin Stern	4.25
226	23	18	Marshall	Liberty	Virginia Midcap	4
227	23	17	Marshall	Liberty	Vernon H&G	2
228	23	7	Marshall	Liberty	Paul Lucas	77.777
281	8	22	Wetzel	Clay	Candy Simms, et al.	0.54



04/03/2026

Scale 1" = 200'