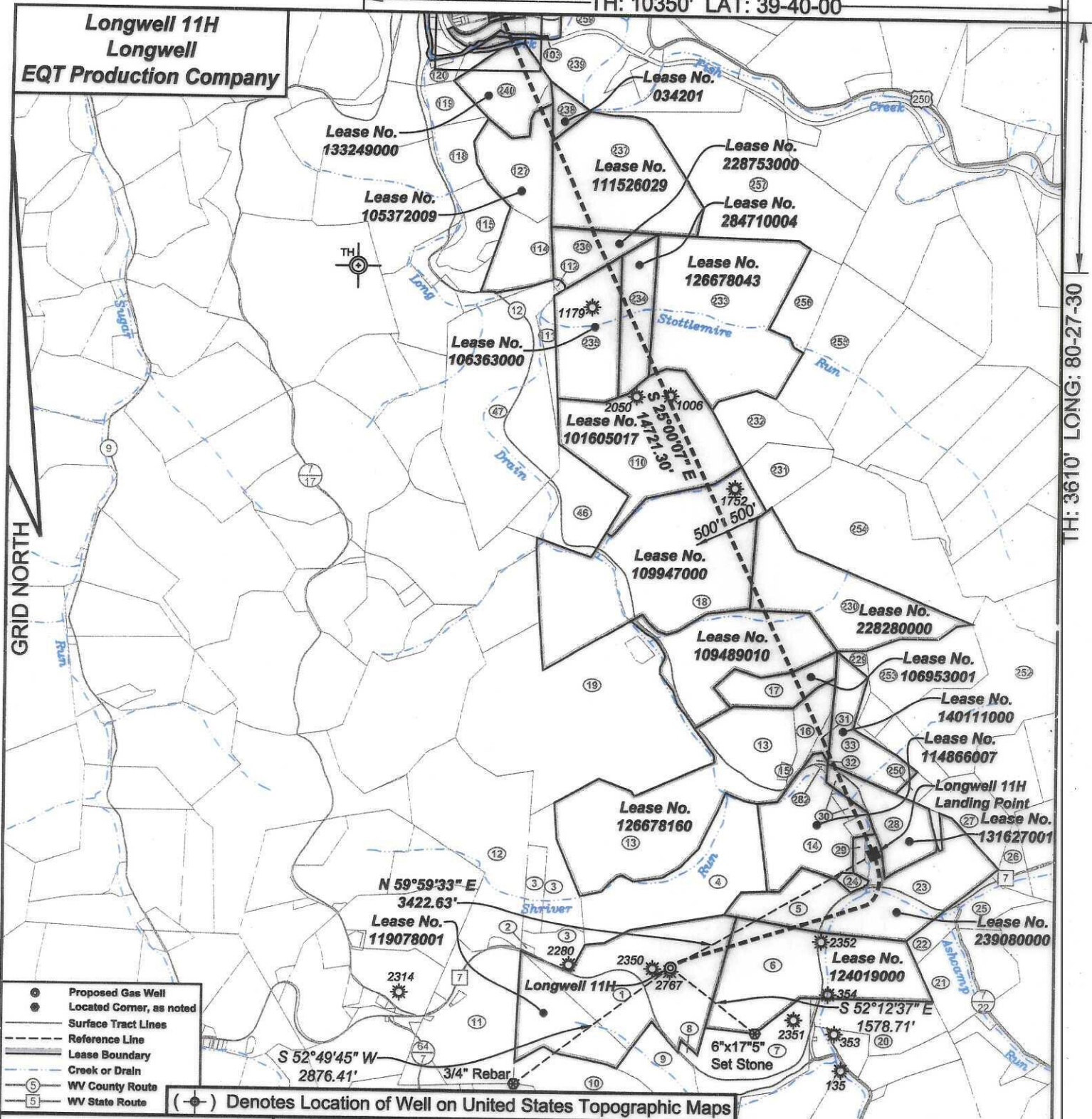


TH: 10350' LAT: 39-40-00

Longwell 11H
Longwell
EQT Production Company



TH: 3610' LONG: 80-27-30

- Proposed Gas Well
- Located Corner, as noted
- Surface Tract Lines
- - - Reference Line
- Lease Boundary
- Creek or Drain
- ⑤ WV County Route
- ⑤ WV State Route

(*) Denotes Location of Well on United States Topographic Maps



I, the undersigned, hereby certify that this plat is correct to the best of my knowledge and belief and shows all the information required by law and the regulations issued and prescribed by the Department of Environmental Protection.

Ben R. Singleton
P.S. 2092



SEAL

FILE NO: 14-24
 DRAWING NO: Longwell 11H
 SCALE: 1" = 2000'
 MINIMUM DEGREE OF ACCURACY: 1:2500
 PROVEN SOURCE OF ELEVATION: NGS CORS Station

STATE OF WEST VIRGINIA
 DEPARTMENT OF ENVIRONMENTAL PROTECTION
OIL AND GAS DIVISION

DATE: March 03 20 26
 OPERATOR'S WELL NO.: Longwell 11H
 API WELL NO
 47 - 103 - 03760
 STATE COUNTY PERMIT

WELL TYPE: OIL GAS LIQUID INJECTION WASTE DISPOSAL
 (IF GAS) PRODUCTION: STORAGE DEEP SHALLOW
 LOCATION: ELEVATION: As-Built: 1435' WATERSHED Long Drain of West Virginia Fork Fish Creek QUADRANGLE: Hundred
 DISTRICT: Church and Clay COUNTY: Wetzel
 SURFACE OWNER: Jeffery Todd Longwell ACREAGE: 106.50
 ROYALTY OWNER: Jeffery Todd Longwell, et al LEASE NO: 119078001 ACREAGE: 106.50
 PROPOSED WORK: DRILL CONVERT DRILL DEEPER FRACTURE OR STIMULATE PLUG OFF OLD FORMATION
 PERFORATE NEW FORMATION OTHER PHYSICAL CHANGE IN WELL (SPECIFY) _____
 PLUG AND ABANDON CLEAN OUT AND REPLUG TARGET FORMATION: Marcellus ESTIMATED DEPTH: 7,711'

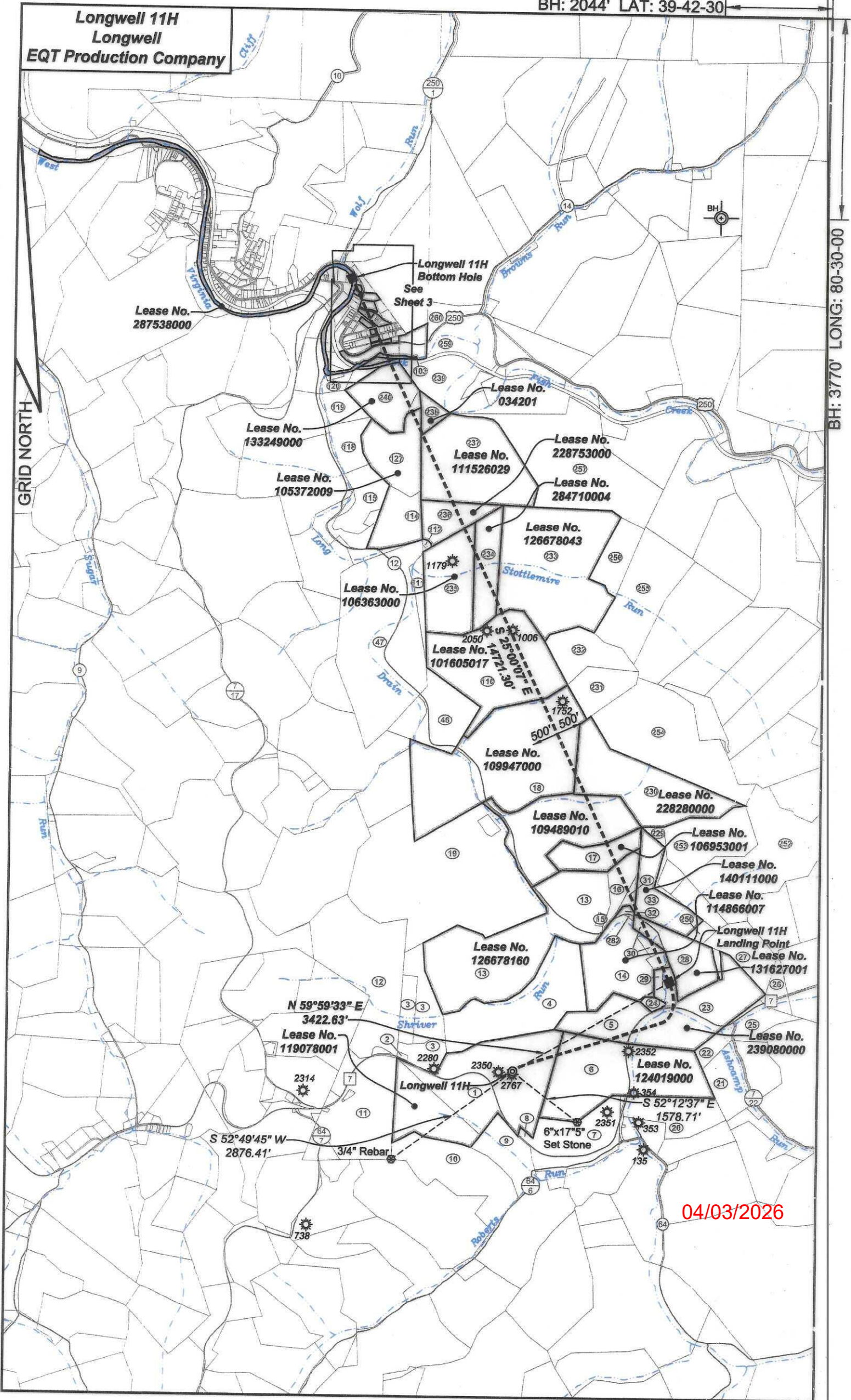
04/03/2026

WELL OPERATOR: EQT Production Company DESIGNATED AGENT: Joseph C. Mallow
 ADDRESS: 2200 Energy Drive ADDRESS: 427 Midstate Drive
Canonsburg, PA 15317 Clarksburg, WV 26301

Longwell 11H
Longwell
EQT Production Company

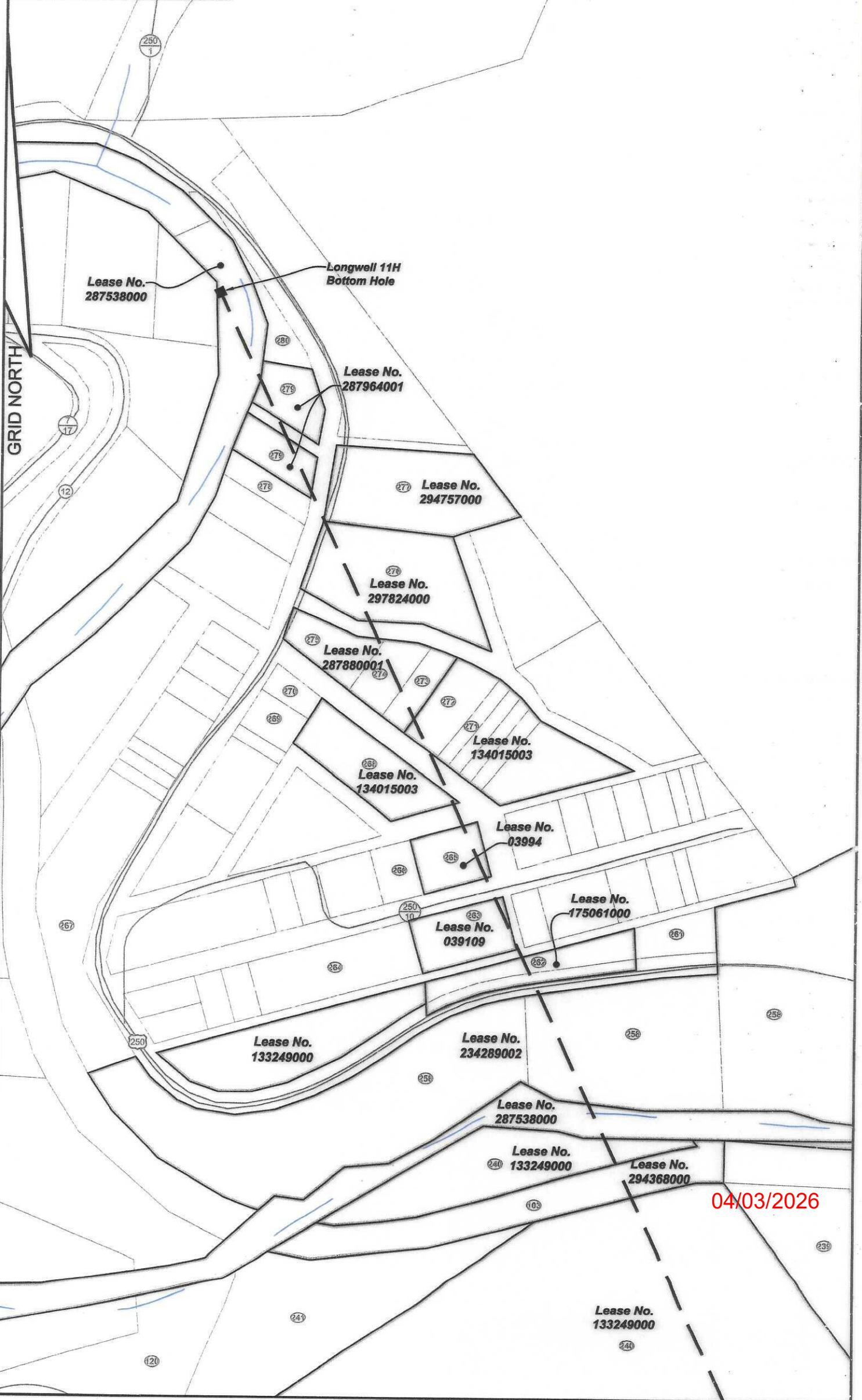
BH: 3770' LONG: 80-30-00

GRID NORTH



04/03/2026

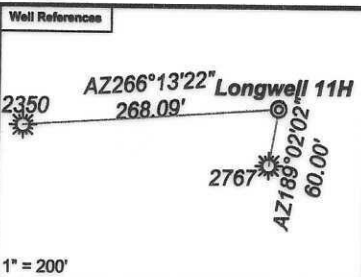
**Longwell 11H
Longwell
EQT Production Company**



04/03/2026

Longwell 11H
Longwell
EQT Production Company

Tract ID	Tax Map No	Parcel No	County	District	Surface Tract Owner	Acres
1	10	13	Wetzel	Church	Jeffery I. Longwell	106.5
2	10	14	Wetzel	Church	Lucann I Harris & Penny I Sult	0.5
3	10	4	Wetzel	Church	Lela J. LeMasters	33.00
4	10	5	Wetzel	Church	Bruce & Linda Garrison	61.5
5	6	29	Wetzel	Church	Larry V Watson, et al	17.86
6	10	15	Wetzel	Church	Charles L. Miller	30
7	10	23	Wetzel	Church	John R. Rice	33
8	10	22	Wetzel	Church	Reil Hill Chapel	1.6
9	10	21	Wetzel	Church	Charles L. Mathews	28
10	10	20	Wetzel	Church	Catherine Roberts, et al.	50
11	10	12	Wetzel	Church	Harriet I Tustin	56.32
12	7	19	Wetzel	Clay	McLach Land LLC	73.211
13	6	23	Wetzel	Church	Bruce & Linda Garrison	124
14	6	25	Wetzel	Church	Larry V. Watson, et al.	40.83
15	6	24	Wetzel	Church	Shriver Cemetery	0.88
16	6	12	Wetzel	Church	Edward M Baldauf, et al	9.04
17	7	11	Wetzel	Clay	Edward M. Baldauf, et al.	20.5
18	7	8	Wetzel	Clay	Paul R. Curry, et al	130
19	7	12	Wetzel	Clay	Wilda M. Church & Peggy Brown	209.35
20	10	25	Wetzel	Church	Alin K. Greathouse	23
21	10	16	Wetzel	Church	Nicholas I & Joseph K Eastham	27
22	10	7	Wetzel	Church	David H. Watson, et al.	6.5
23	10	6	Wetzel	Church	Nicholas L. & Joseph K. Eastham	48.39
24	6	26	Wetzel	Church	Thomas Chapel	1.4
25	10	8	Wetzel	Church	Cary Alan Cole	9.66
26	6	30.1	Wetzel	Church	Ashley W. & Jimmy L. Frye	4.36
27	6	30	Wetzel	Church	Leslie N. Williams	20.64
28	6	27.1	Wetzel	Church	Edward M. Baldauf, et al.	22.86
29	6	29.1	Wetzel	Church	Board of Education	10.61
30	6	27	Wetzel	Church	Larry V. Watson, et al.	2.54
31	6	13	Wetzel	Church	Edward M. Baldauf, et al.	2.9
32	6	14.1	Wetzel	Church	Edward M. Baldauf, et al	1.24
33	6	15	Wetzel	Church	Edward M. Baldauf, et al.	28.5
46	7	7	Wetzel	Clay	William A. Myers II	29.8
47	4	48	Wetzel	Clay	Stephen T. Varner	115.3
103	2	63	Wetzel	Clay	CNX Land LLC	61.91
110	4	46	Wetzel	Clay	William Myers	77.7
111	4	42	Wetzel	Clay	Jim Williams	6
112	4	40	Wetzel	Clay	Ty Blake	0.5
114	4	38	Wetzel	Clay	F N Murphy	20.2
115	4	36	Wetzel	Clay	Dallison Lumber Inc.	11.6
118	4	24	Wetzel	Clay	Dallison Lumber Inc.	10.3
119	4	53	Wetzel	Clay	Maureen Mackey	7.85
120	4	53.1	Wetzel	Clay	Maureen Mackey	3.1
127	4	22	Wetzel	Clay	C.N. Murphy	33.5
229	6	16	Wetzel	Church	Edward M. Baldauf, et al.	4.7
230	6	7	Wetzel	Church	Dallison Lumber Inc.	63
231	7	9	Wetzel	Clay	James Jobes Estate	15.3
232	4	45	Wetzel	Clay	James Jobes Estate	26.3
233	4	43	Wetzel	Clay	Kathryn Simoni	101
234	4	43.1	Wetzel	Clay	Kathryn Simoni	31.58
235	4	41	Wetzel	Clay	Violen Kiger	37.33
236	4	21.1	Wetzel	Clay	Kathleen Maceo	45
237	4	21	Wetzel	Clay	Wilma Omduff	72.8
238	4	20.1	Wetzel	Clay	Wilma Omduff	4.5
239	4	20	Wetzel	Clay	Aaron Kolst	34.6
240	4	23	Wetzel	Clay	Richard Keman	30.4
241	4	54	Wetzel	Clay	Maureen Mackey	2
250	6	17	Wetzel	Church	Edward M. Baldauf, et al	2.6
252	6	9	Wetzel	Church	Edward M. Baldauf, et al.	101.61
253	6	8	Wetzel	Church	Franklin Tennant, et al.	45
254	6	7	Wetzel	Church	Dallison Lumber Inc.	63
255	3	12	Wetzel	Clay	Kathryn Simoni	45.7
256	4	44	Wetzel	Clay	Kathryn Simoni	18.1
257	4	18	Wetzel	Clay	Ronald Kasserman	110
258	4	5	Wetzel	Clay	Cynthia Hayes	10
259	4	6	Wetzel	Clay	Wetzel County Board of Education	46.5
260	4	61	Wetzel	Clay	Richard Poland	6.5
261	9	106.1	Wetzel	Clay	Harry Wright	0.5
262	9	109.1	Wetzel	Clay	Linda Greathouse	1
263	9	109	Wetzel	Clay	Delmas Greathouse	0.517
264	9	110	Wetzel	Clay	Robbie Curver	0.689
265	9	94	Wetzel	Clay	Dean Miller	0.287
266	9	93	Wetzel	Clay	Dean Miller	0.172
267	9	20	Wetzel	Clay	Robert Long	1.27
268	9	78	Wetzel	Clay	Lloyd Henderson	0.621
269	9	72	Wetzel	Clay	Neil Longwell	0.172
270	9	71	Wetzel	Clay	Neil Longwell	0.092
271	9	63	Wetzel	Clay	Lloyd Henderson	0.107
272	9	64	Wetzel	Clay	Lloyd Henderson	0.31
273	9	65	Wetzel	Clay	Walter Longwell	0.191
274	9	66	Wetzel	Clay	Walter Longwell	0.26
275	9	68	Wetzel	Clay	Walter Longwell	0.323
276	9	69	Wetzel	Clay	Donald Kennedy	1.55
277	9	49	Wetzel	Clay	Roy Dunn	0.82
278	9	61	Wetzel	Clay	Hundred 11111111 PSD	0.235
279	9	6	Wetzel	Clay	Sherrynn Creaver	0.6
280	9	5.1	Wetzel	Clay	Sally Anderson	0.18
282	6	14	Wetzel	Church	Larry Watson	0.16



Notes:
 Longwell 11H coordinates are
 NAD 27 N: 422,867.95 E: 1,719,835.88
 NAD 27 Lat: 39.656756 Long: -80.495093
 NAD 83 UTM N: 4,389,792.81 E: 543,330.56
 Longwell 11H Landing Point coordinates are
 NAD 27 N: 424,579.65 E: 1,722,799.74
 NAD 27 Lat: 39.661545 Long: -80.484633
 NAD 83 UTM N: 4,390,329.37 E: 544,224.85
 Longwell 11H Bottom Hole coordinates are
 NAD 27 N: 437,921.45 E: 1,716,577.77
 NAD 27 Lat: 39.697983 Long: -80.507264
 NAD 83 UTM N: 4,394,362.48 E: 542,261.52
 West Virginia Coordinate system of 1927 (North Zone)
 based upon Differential GPS Measurements.
 Plat orientation, corner and well ties are based upon
 the grid north meridian.
 Well location references are based upon the grid north
 meridian.
 UTM coordinates are NAD83, Zone 17, Meters.

- Longwell 11H
- Longwell 9H
- Longwell 7H
- Longwell 5H
- Longwell 1H
- Longwell 3H

Lease No.	Owner	Acres
119078001	Jeffery Todd Longwell, et al.	106.5
124019000	Janice Cosgray, et al.	90
239080000	EQT TGH Exploration II LLC, et al.	85
114866007	Samuel Harlan Ellis, et al.	45.13
131627001	Nancy Dawn Cosgray, et al.	28.15
140111000	EQT TGH Exploration II, LLC, et al.	28.5 of 1962.7875
126678160	Stone Hill Mineral Holdings, LLC, et al.	194
106953001	Nancy Dawn Cosgray, et al.	20.5 of 49
109489010	Paul R. Curry, et ux., et al.	170
228280000	Richardson Rhodes Trust dated April 10, 2019	63
109947000	Peggy Church Brown, et al.	31,307949 of 140
101605017	Linda Jo Wood Smith, et al.	80
126678043	Three Rivers Royalty II, LLC, et al.	133.04 of 1734.20
284710004	Betty M. Prine, et al.	31.58
106363000	Janet E. Love, et al.	37.5
228753000	Merle Oates, et al.	50
111526029	Elkhorn Mineral Fund, LP, et al.	72.78
034201	Wilma L. Omduff	4.5
105372009	AMP IV, LP, et al.	53.70
133249000	Elk Range Royalties II, LP, et al.	32.5875
294368000	CNX Gas Company, LLC	61.94
287538000	West Virginia Division of Natural Resources	18.51444 of 38.187
234289002	Three Rivers Royalty II LLC, et al.	260.25
175061000	OXY USA, Inc., et al.	1 of 31151.581
039109	Delmas Greathouse, Jr, et al.	0.517
03994	Dean W. Miller, et al.	0.29
134015003	Lloyd F. Henderson, et al.	2.80067
287880001	Essie Rosalee Longwell, et al.	0.77
297824000	Sunshine State Investment Group LLC, et al.	1.55
294757000	Cody M. Jones	2.11
287964001	Raymond E. Greaver, Jr., et al.	0.81

