

4710303819

Topo Quad: Littleton

Scale: 1"=1000'

County: Wetzel

Date: April 22, 2021

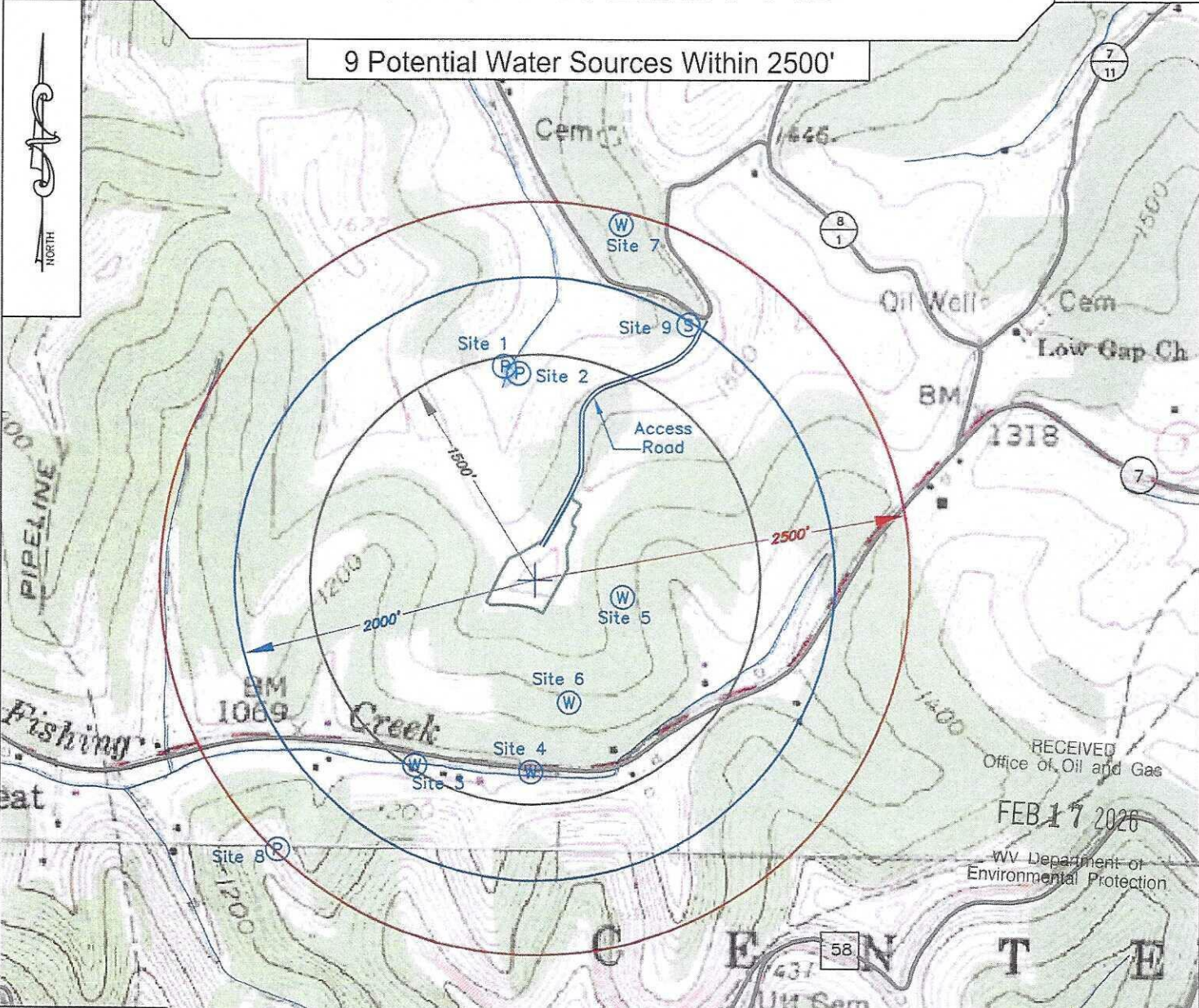
District: Center

Project N0: _____

CASH WELL PAD

Water

9 Potential Water Sources Within 2500'



LEGEND

- W Water Well
- Creek or Drain
- O WV County Route
- 58 WV State Route

CASH WATER	
NAD 27 N: 413,402.914	E: 1,694,689.296
WGS 84 Lat: 39.630055	Long: -80.583805
Elevation: 1,501'	

RECEIVED
Office of Oil and Gas
FEB 17 2020
WV Department of
Environmental Protection

KEYSTONE
CONSULTANTS, LLC

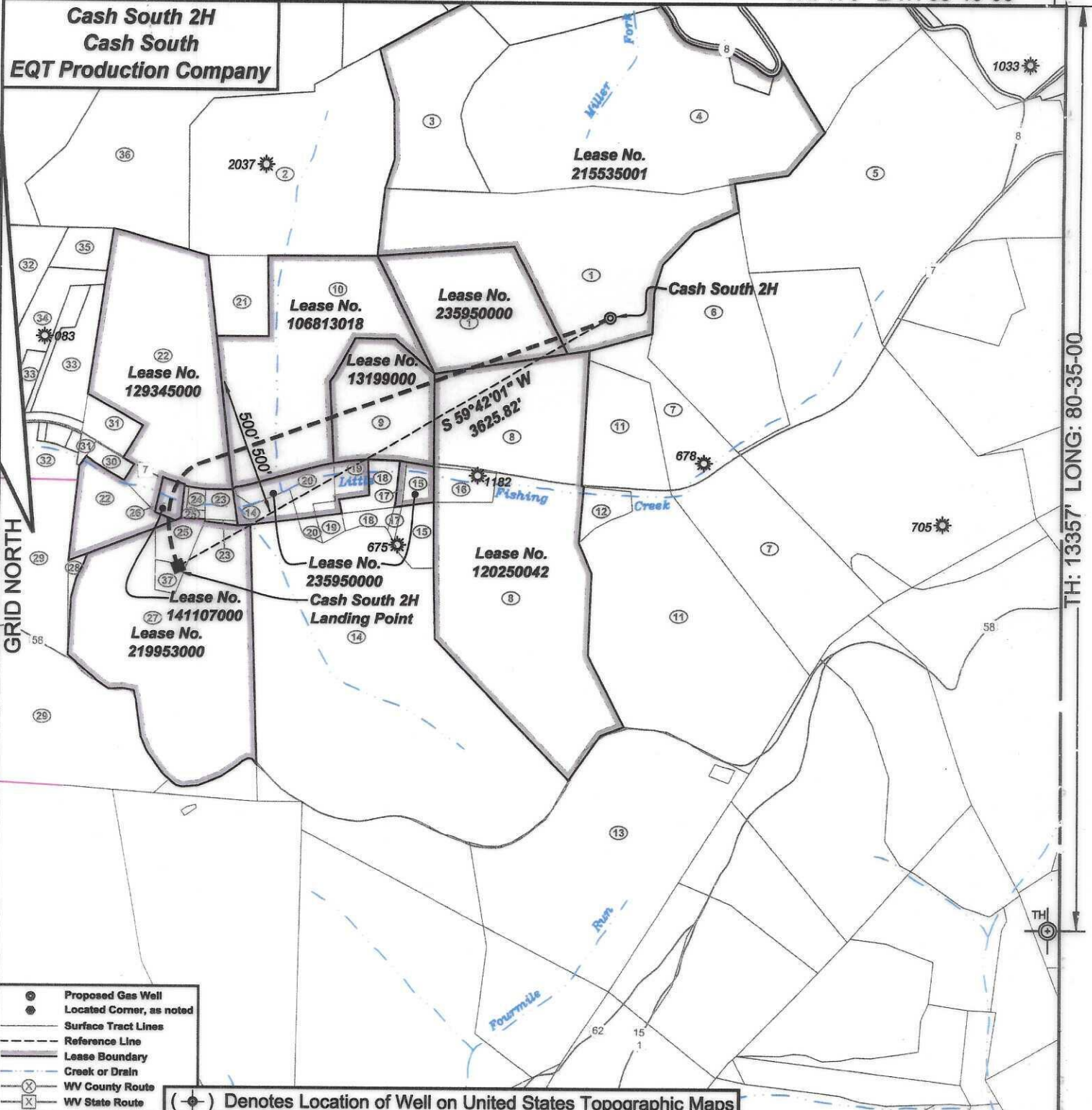
Keystone Consultants, LLC
32 East Main Street
Carnegie, PA 15106
412 278-2100

Prepared For:
EQT Production Company
400 Woodcliff Drive
Canonsburg, PA 15317

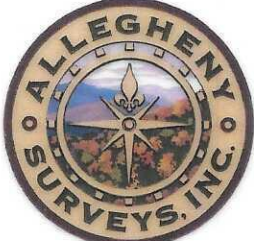
EQT
EQT PRODUCTION COMPANY
400 WOODCLIFF DRIVE
CANONSBURG, PA 15317

03/27/2026

TH: 173' LAT: 39-40-00



TH: 13357' LONG: 80-35-00



I, the undersigned, hereby certify that this plat is correct to the best of my knowledge and belief and shows all the information required by law and the regulations issued and prescribed by the Department of Environmental Protection.

Ben R. Singleton
P.S. 2092



FILE NO: 243-24
 DRAWING NO: Cash South 2H
 SCALE: 1" = 1000'
 MINIMUM DEGREE OF ACCURACY: 1:2500
 PROVEN SOURCE OF ELEVATION: NGS CORS Station

STATE OF WEST VIRGINIA
 DEPARTMENT OF ENVIRONMENTAL PROTECTION
 OIL AND GAS DIVISION

DATE: January 29 20 26
 OPERATOR'S WELL NO.: Cash South 2H
 API WELL NO
 47 - 103 - 03819
 STATE COUNTY PERMIT

WELL TYPE: OIL GAS LIQUID INJECTION WASTE DISPOSAL
 (IF GAS) PRODUCTION: STORAGE DEEP SHALLOW
 LOCATION: ELEVATION: 1488' WATERSHED Little Fishing Creek QUADRANGLE: Littleton
 DISTRICT: Center COUNTY: Wetzel
 SURFACE OWNER: Phyllis R. Bohrer ACREAGE: 52.95
 ROYALTY OWNER: Green Dot Farm, Inc., et al. LEASE NO: 215535001 ACREAGE: 121.18
 PROPOSED WORK: DRILL CONVERT DRILL DEEPER FRACTURE OR STIMULATE PLUG OFF OLD FORMATION
 PERFORATE NEW FORMATION OTHER PHYSICAL CHANGE IN WELL (SPECIFY)
 PLUG AND ABANDON CLEAN OUT AND REPLUG TARGET FORMATION: Marcellus ESTIMATED DEPTH: 7566'

WELL OPERATOR: EQT Production Company DESIGNATED AGENT: Joseph C. Mallow
 ADDRESS: 2200 Energy Drive ADDRESS: 427 Midstate Drive
 Canonsburg, PA 15317 Clarksburg, WV 26301

Cash South 2H
Cash South
EQT Production Company

Tract I.D.	Tax Map No.	Parcel No.	County	District	Surface Tract Owner	Acres
1	15	58	Wetzel	Center	Phyllis R Bohrer	52.95
2	15	44	Wetzel	Center	Phyllis R Bohrer	43.8
3	15	45	Wetzel	Center	NA	NA
4	15	46	Wetzel	Center	Brenda S Dorsey	82
5	15	47	Wetzel	Center	C.O. Phillips Est.	47.3
6	15	59.1	Wetzel	Center	Michael D. & Amber N. Amos	24.74
7	19	8	Wetzel	Center	Charles O. Phillips	31.97
8	19	7	Wetzel	Center	Sharon S Long	49.79
9	15	57	Wetzel	Center	Jessica L. Marling	7.29
10	15	56	Wetzel	Center	Phyllis R. Bohrer	42.745
11	19	8.2	Wetzel	Center	Brian D. & Julie L. Phillips	55.46
12	19	8.1	Wetzel	Center	Brian D. & Julie L. Phillips	2.38
13	3	2	Wetzel	Grant	Joseph F. Blake & Gay K. Irrevocable Trust	194
14	19	6	Wetzel	Center	William L. & Lisa D. Wharton	81.381
15	15	57.1	Wetzel	Center	Karen S. Morris	4.68
16	19	7.1	Wetzel	Center	Larry & Sharon Long	2.63
17	15	57.4	Wetzel	Center	Donna J. Pierce	0.635
18	15	57.2	Wetzel	Center	Donna J. Carr	2.684
19	15	57.3	Wetzel	Center	Donna J. Pierce	2.715
20	15	56.1	Wetzel	Center	Anna M. Shodgrass	3.755
21	15	55.1	Wetzel	Center	Coastal Forest Resources Company	5.5
22	15	55	Wetzel	Center	Mildred A. Sapp	44.82
23	19	3.1	Wetzel	Center	Mercedez B. Goff	1.267
24	19	3.2	Wetzel	Center	Jack L. & Arminta C. Oihfield	0.495
25	19	3.3	Wetzel	Center	Jack L. & Arminta C. Oihfield	2.47
26	15	55.3	Wetzel	Center	Samantha M. Morgan	1.104
27	19	3	Wetzel	Center	Jerry L. & Judy A. Cecil Trust	38.11
28	19	2	Wetzel	Center	.ohn S. Starkey	1.05
29	19	1	Wetzel	Center	Obrey M. Dulaney	44.57
30	15	55.2	Wetzel	Center	Darlene K. & Jason W. Daniels	1.03
31	15	54	Wetzel	Center	April C. Oihfield	2.3
32	15	52	Wetzel	Center	Sharon M. Dulaney, et al.	25.95
33	15	53	Wetzel	Center	Richard F. Sapp Est.	8.62
34	15	52.2	Wetzel	Center	Richard F. Sapp Est.	4.5
35	15	52.1	Wetzel	Center	Potts Cemetery	1.25
36	15	43	Wetzel	Center	Donnie P. & Donna Kirkpatrick	62.81
37	19	3.4	Wetzel	Center	Jack L. & Arminta C. Oihfield	0.956

Notes:
 Cash South 2H coordinates are
 NAD 27 N: 413,382.48 E: 1,694,649.27
 NAD 27 Lat: 39.630883 Long: -80.472331
 NAD 83 UTM N: 4,386,774.80 E: 535,705.19
 Cash South 2H Landing Point coordinates are
 NAD 27 N: 411,553.07 E: 1,691,519.48
 NAD 27 Lat: 39.625768 Long: -80.483372
 NAD 83 UTM N: 4,386,201.30 E: 534,760.93
 West Virginia Coordinate system of 1983 (North Zone)
 based upon Differential GPS Measurements.
 Plat orientation, corner and well ties are based upon
 the grid north meridian.
 Well location references are based upon the grid north
 meridian.
 UTM coordinates are NAD83, Zone 17, Meters.

Cash South **Cash South 14H** ©
Cash South 12H ©
Cash South 10H ©
Cash South 8H ©
Cash South 6H ©
Cash South 4H ©
Cash South 2H ©

Lease No.	Owner	Acres
215535001	Green Dot Farm, Inc., et al.	121.18
235950000	EQT Production Company, et al.	21.839 of 65.29
120250042	Thomas J. Iacoboni, Trustee of the Thomas J. Iacoboni Revocable Trust Agreement, dated 5/15/2018, et al.	67.175
131990000	AMP Fund III, LP, et al.	7.285
106813018	Bounty Minerals, LLC, et al.	36.20062
129345000	Appalachian Basin Minerals LP, et al.	44.82225
141107000	Country Roads Minerals, LLC, et al.	1.104
219953000	Stone Hill Minerals Holdings, LLC, et al.	40.01925 of 1,508.7153

47-103-03819

