

Topo Quad: Littleton

Scale: 1"=1000'

County: Wetzel

Date: April 22, 2021

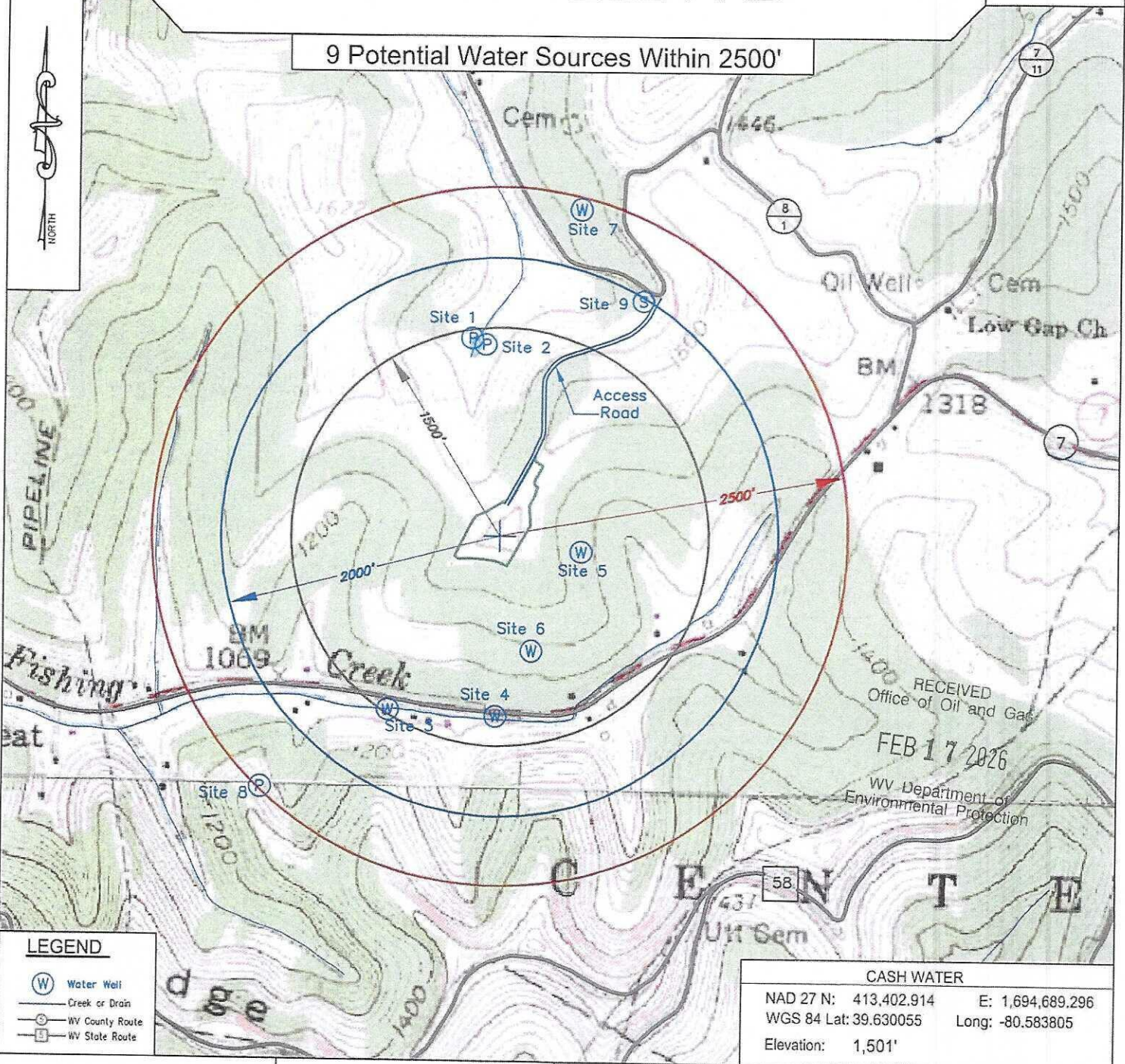
District: Center

Project NO: _____

CASH WELL PAD

Water

9 Potential Water Sources Within 2500'



LEGEND

- W Water Well
- Creek or Drain
- C WV County Route
- S WV State Route

CASH WATER	
NAD 27 N: 413,402,914	E: 1,694,689,296
WGS 84 Lat: 39.630055	Long: -80.583805
Elevation: 1,501'	

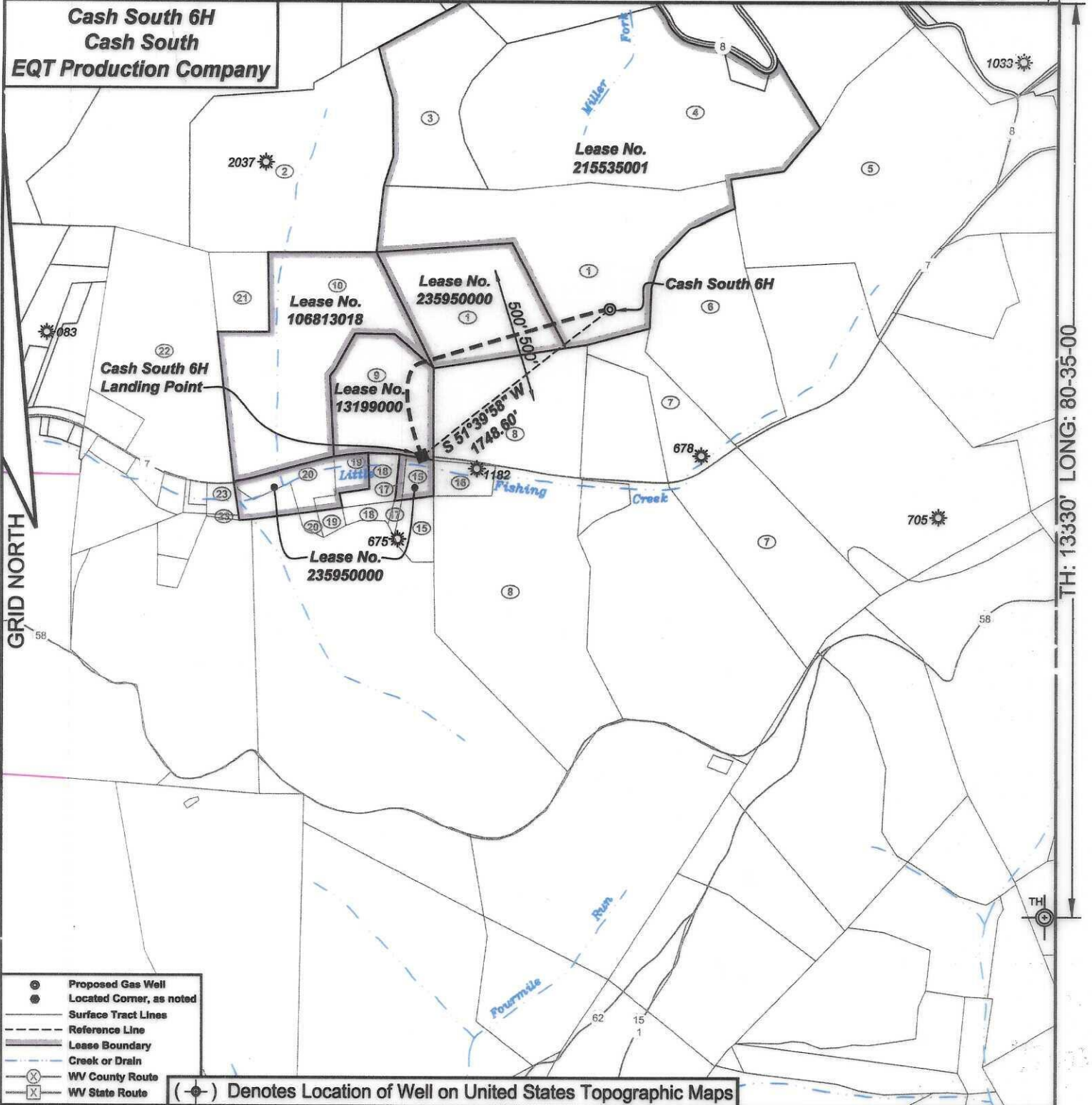
KEYSTONE
CONSULTANTS, LLC

Keystone Consultants, LLC
32 East Main Street
Carnegie, PA 15106
412 278-2100

Prepared For:
EQT Production Company
400 Woodcliff Drive
Canonsburg, PA 15317

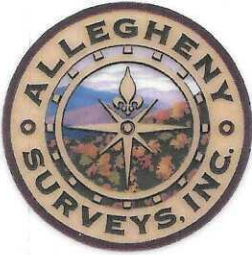
EQT
EQT PRODUCTION COMPANY
400 WOODCLIFF DRIVE
CANONSBURG, PA 15317

**Cash South 6H
Cash South
EQT Production Company**



- ⊙ Proposed Gas Well
- ⊙ Located Corner, as noted
- Surface Tract Lines
- - - Reference Line
- Lease Boundary
- - - Creek or Drain
- (X) WV County Route
- (X) WV State Route

(⊙) Denotes Location of Well on United States Topographic Maps



I, the undersigned, hereby certify that this plat is correct to the best of my knowledge and belief and shows all the information required by law and the regulations issued and prescribed by the Department of Environmental Protection.

Ben R. Singleton
P.S. 2092



SEAL

FILE NO: 243-24
DRAWING NO: Cash South 6H
SCALE: 1" = 1000'
MINIMUM DEGREE OF ACCURACY: 1:2500
PROVEN SOURCE OF ELEVATION: NGS CORS Station

STATE OF WEST VIRGINIA
DEPARTMENT OF ENVIRONMENTAL PROTECTION
OIL AND GAS DIVISION

DATE: January 29 20 26
OPERATOR'S WELL NO.: Cash South 6H
API WELL NO
47 - 103 - 03821
STATE COUNTY PERMIT

WELL TYPE: OIL GAS LIQUID INJECTION WASTE DISPOSAL
(IF GAS) PRODUCTION: STORAGE DEEP SHALLOW
LOCATION: ELEVATION: 1488' WATERSHED Little Fishing Creek QUADRANGLE: Littleton
DISTRICT: Center COUNTY: Wetzel
SURFACE OWNER: Phyllis R. Bohrer ACREAGE: 52.95
ROYALTY OWNER: Green Dot Farm, Inc., et al. LEASE NO: 215535001 ACREAGE: 121.18
PROPOSED WORK: DRILL CONVERT DRILL DEEPER FRACTURE OR STIMULATE PLUG OFF OLD FORMATION
 PERFORATE NEW FORMATION OTHER PHYSICAL CHANGE IN WELL (SPECIFY)
 PLUG AND ABANDON CLEAN OUT AND REPLUG TARGET FORMATION: Marcellus ESTIMATED DEPTH: 7566'

WELL OPERATOR: EQT Production Company DESIGNATED AGENT: Joseph C. Mallow
ADDRESS: 2200 Energy Drive ADDRESS: 427 Midstate Drive
Canonsburg, PA 15317 Clarksburg, WV 26301

03/27/2026

**Cash South 6H
Cash South
EQT Production Company**

Tract I.D.	Tax Map No.	Parcel No.	County	District	Surface Tract Owner	Acres
1	15	58	Wetzel	Center	Phyllis R Bohrer	52.95
2	15	44	Wetzel	Center	Phyllis R Bohrer	43.8
3	15	45	Wetzel	Center	NA	NA
4	15	46	Wetzel	Center	Brenda S Dorsey	82
5	15	47	Wetzel	Center	C.O. Phillips Est.	47.3
6	15	59.1	Wetzel	Center	Michael D. & Amber N. Amos	24.74
7	19	8	Wetzel	Center	Charles O. Phillips	31.97
8	19	7	Wetzel	Center	Sharon S Long	49.79
9	15	57	Wetzel	Center	Jessica L. Marling	7.29
10	15	56	Wetzel	Center	Phyllis R Bohrer	42.745
15	15	57.1	Wetzel	Center	Karen S Morris	4.68
16	19	7.1	Wetzel	Center	Larry & Sharon Long	2.63
17	15	57.4	Wetzel	Center	Donna J. Pierce	0.635
18	15	57.2	Wetzel	Center	Donna J. Carr	2.694
19	15	57.3	Wetzel	Center	Donna J. Pierce	2.715
20	15	58.1	Wetzel	Center	Anna M. Shodgrass	3.755
21	15	55.1	Wetzel	Center	Coastal Forest Resources Company	5.5
22	15	55	Wetzel	Center	Mildred A Sapp	44.82
23	19	3.1	Wetzel	Center	Mercedes B. Coff	1.267

Notes:
Cash South 6H coordinates are
 NAD 27 N: 413,408.63 E: 1,694,683.96
 NAD 27 Lat: 39.630956 Long: -80.472280
 NAD 83 UTM N: 4,386,782.64 E: 535,709.53
Cash South 6H Landing Point coordinates are
 NAD 27 N: 412,324.08 E: 1,693,292.41
 NAD 27 Lat: 39.627937 Long: -80.477108
 NAD 83 UTM N: 4,386,445.24 E: 535,297.17
 West Virginia Coordinate system of 1983 (North Zone)
 based upon Differential GPS Measurements.
 Plat orientation, corner and well ties are based upon
 the grid north meridian.
 Well location references are based upon the grid north
 meridian.
 UTM coordinates are NAD83, Zone 17, Meters.

- Cash South 14H ©
- Cash South 12H ©
- Cash South 10H ©
- Cash South 8H ©
- Cash South 6H ©
- Cash South 4H ©
- Cash South 2H ©

Lease No.	Owner	Acres
215535001	Green Dot Farm, Inc., et al.	121.18
235950000	EQT Production Company, et al.	21,839 of 65.29
106813018	Bounty Minerals, LLC, et al.	36.20062
131990000	AMP Fund III, LP, et al.	7.285

47-103-03821

47-103-03821
 47-103-03821

