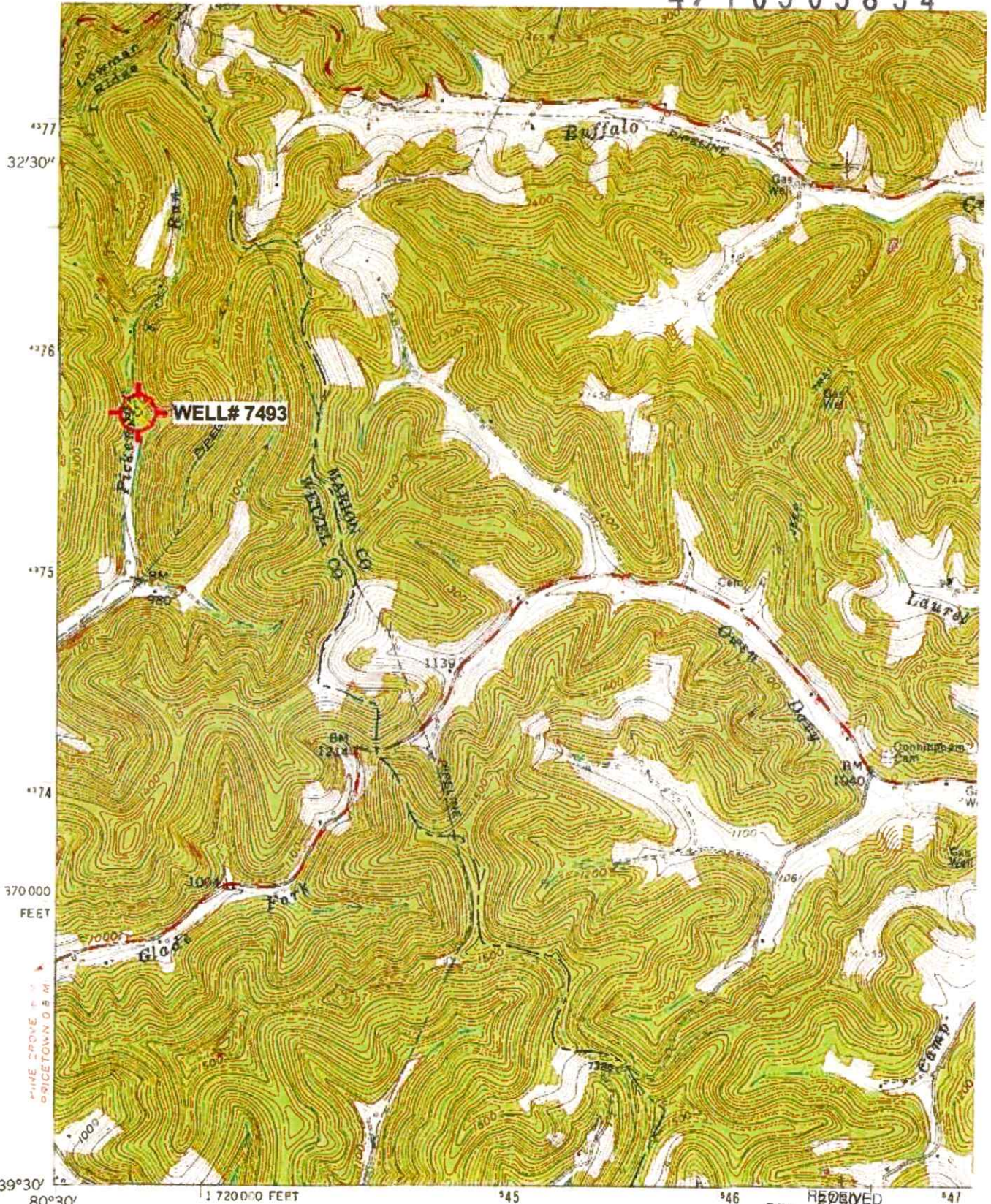


4710303834



(FOLSOM)  
48821 NE

Mapped, edited, and published by the Geological Survey  
Control by USGS and USC&GS

Topography from aerial photographs by photogrammetric methods  
Aerial photographs taken 1957. Field check 1960

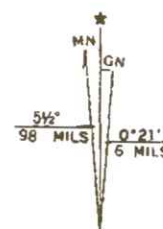
Polyconic projection. 1927 North American datum  
10,000-foot grid based on West Virginia coordinate system,  
north zone  
1000-meter Universal Transverse Mercator grid ticks,  
zone 17, shown in blue

'Glover Gap; WV Scale: 1" = 0.379Mi 610Mt 2,000Ft, 1 Mi = 2.640" , 1 cm = 240Mtes where

RECEIVED  
Office of Oil and Gas

FEB 17 2026

WV Department of  
Environmental Protection



UTM GRID AND 1976 MAGNETIC NORTH  
DECLINATION AT CENTER OF SHEET

03/20/2026

Well# 7493  
GLOVER GAP WV 7.5' Quad  
Scale: 1" = 500'



Well# 7493

1061

1400

1300

Pickenpan

PIPELINE

1100

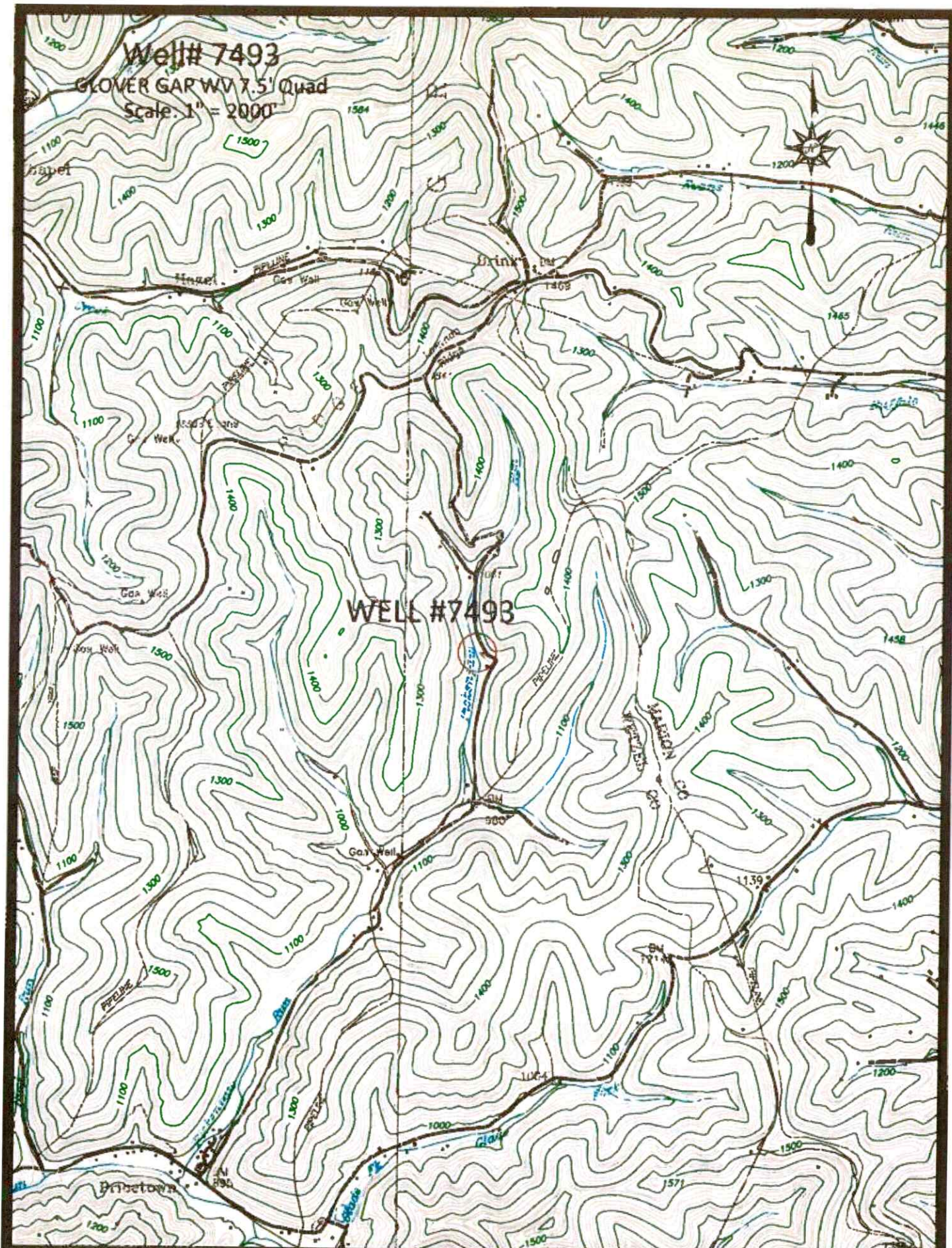
RECEIVED  
Office of Oil and Gas  
FEB 17 2026  
WV Department of  
Environmental Protection

BM

980

 Access Road

03/20/2026



47 1 0 3 0 3 8 3 4

WW-7  
8-30-06



West Virginia Department of Environmental Protection  
Office of Oil and Gas

**WELL LOCATION FORM: GPS**

API: 47-103-70642 WELL NO.: 7493

FARM NAME: SNODGRASS #1

RESPONSIBLE PARTY NAME: WEST VIRGINIA LAND RESOURCES INC.

COUNTY: WETZEL DISTRICT: GRANT

QUADRANGLE: GLOVER GAP, WV

SURFACE OWNER: GEORGE ANDERSON

ROYALTY OWNER: \_\_\_\_\_

UTM GPS NORTHING: 4,375,891 m

UTM GPS EASTING: 543,351 m GPS ELEVATION: 312 m

The Responsible Party named above has chosen to submit GPS coordinates in lieu of preparing a new well location plat for a plugging permit or assigned API number on the above well. The Office of Oil and Gas will not accept GPS coordinates that do not meet the following requirements:

1. Datum: NAD 1983, Zone: 17 North, Coordinate Units: meters, Altitude: height above mean sea level (MSL) – meters.

2. Accuracy to Datum – 3.05 meters

3. Data Collection Method:

Survey grade GPS  : Post Processed Differential

Real-Time Differential \_\_\_\_\_

Mapping Grade GPS \_\_\_\_\_ : Post Processed Differential \_\_\_\_\_

Real-Time Differential \_\_\_\_\_

4. Letter size copy of the topography map showing the well location.

I the undersigned, hereby certify this data is correct to the best of my knowledge and belief and shows all the information required by law and the regulations issued and prescribed by the Office of Oil and Gas.

Signature

PS 2002

Title

JANUARY 30, 2026

Date

RECEIVED  
Office of Oil and Gas

FEB 17 2026

WV Department of  
Environmental Protection

03/20/2026