

39° 35' 00"

Latitude

80° 30' 00"

Longitude

+ 1.98 S  
2.02 W

**Topo Location**

7.5' Loc. \_\_\_\_\_ 15' Loc. \_\_\_\_\_  
(calc.) \_\_\_\_\_

Company Victor Oil + Gas Co.

Farm S J Kilcoyne #1

15' Quad \_\_\_\_\_  
(sec.)

7.5' Quad Big Run

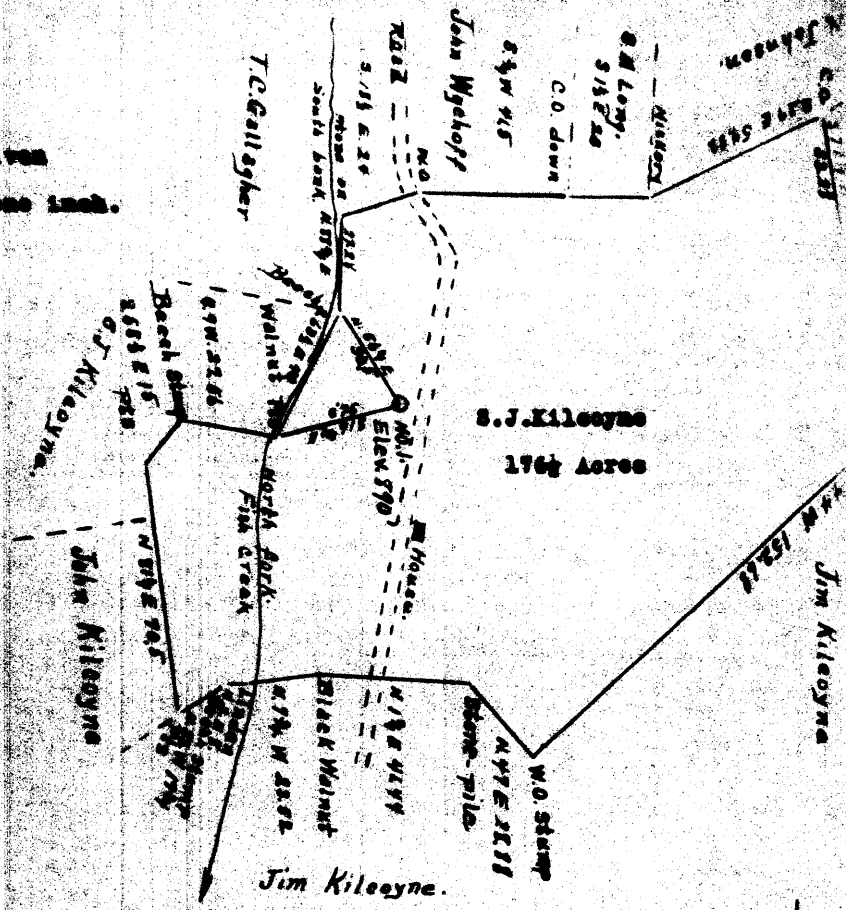
District GRANT

**WELL LOCATION PLAT**

County 103 Permit 30027

Map showing the location of Well No. 1, being abandoned  
 by Order of the Board, of Fairview, W. Va. on the S.J. Kileayne farm of  
 176 1/2 acres, located in ~~Union~~ District, Putnam County, West Virginia.

Distances given  
 in feet.  
 Scale---one inch.



**ENGINEER'S CERTIFICATE.**

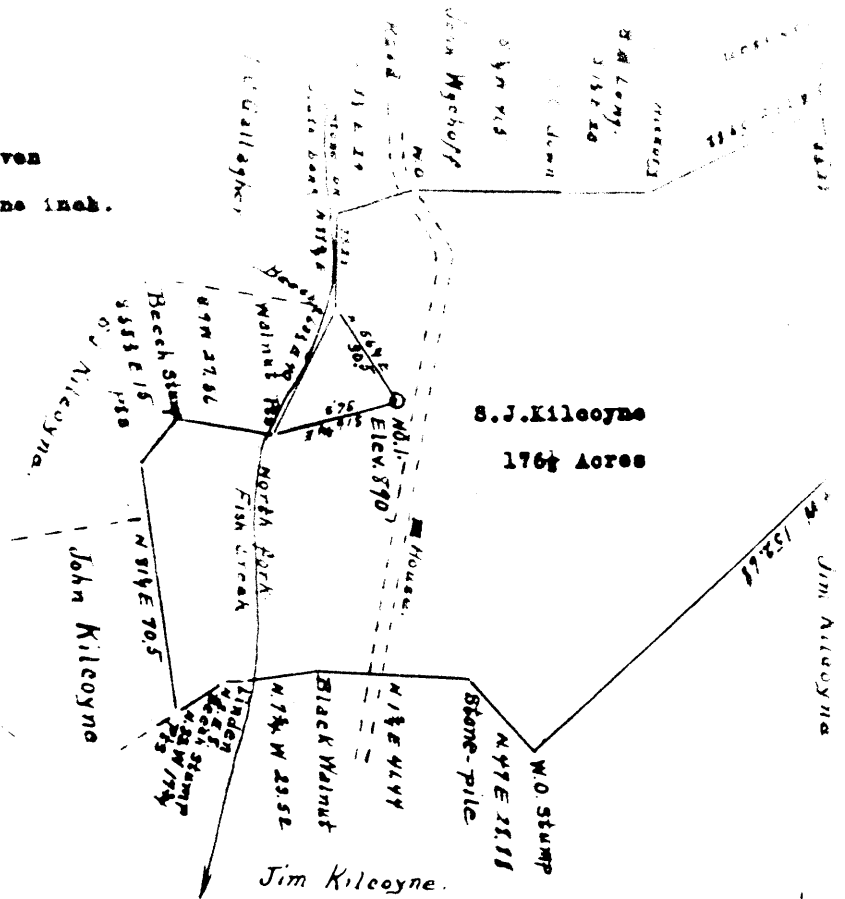
I, the undersigned hereby certify that this map is correct and that  
 all the information to the best of my knowledge and belief, required by  
 the act and the section of the Mining Laws of West Virginia.

A.L. Bradley  
 Engineer

Witnessed before me a Notary Public in and for Putnam County  
 this the 1st day of August 1930.  
 My commission expires April 14 1935

Plan showing the location of the 176 1/2 acre tract owned by Victor E Tennant of Fairview, W. Va. of the S. J. Kileoyne tract of 176 1/2 acres, located in ~~the~~ District, Mingo County, West Virginia.

Distance given in poles.  
40 poles--one inch.



ENGINEER'S CERTIFICATE.

I, the undersigned hereby certify that this map is correct and contains all the information to the best of my knowledge and belief, required by the oil and gas section of the Mining Laws of West Virginia.

A. L. Headley  
Engineer

Acknowledged before me a Notary Public in and for Lincoln County, this the 24th day of August 1920.

My commission expires 11th 11th 1921

Grant District, Wetzel County, W. Va.

By Victor Oil &amp; Gas Co., Mannington, W. Va. (Victor E. Tennant).

Abandoned under permit Wet-27.

On 176 acres, Mobley; surface and minerals owned by S. J.  
Kilcoyne's widow, Mobley, W. Va.

Was drilled in 1917.

Elevation, 890' B.

13" casing, 16'; 10", 160'; 8", 1130'; 6", 1840'.

Well produced oil from Big Injun Sand until went dry.

Abandonment reported to Dept. of Mines Oct. 22, 1930.

Well was not shot. Fresh water at 1526'.

Record to RCT from Mrs. Griffith Sept. 10, 1938.

	Top.	Bottom.	Thickness.
Pittsburgh Coal	620	- 628	8
Big Dunkard Sand	1165	- 1205	40
Sand, Maxton? (hole full water, 1526') <sup>a</sup>	1440	- 1590	150
Big lime	1835	- 1900	65
Big Injun Sand (oil, 1995-2005')	1900	- 2127	227
Shells	2127	- 2290	163
Slate and shells	2290	- 2390	100
Slate	2390	- 2432	42
Sandy lime	2432	- 2440	8
Shells, Gantz	2440	- 2471	31
Sand	2471	- 2485	14
Shells	2485	- 2540	55
Slate, 50-Ft.	2540	- 2698	158
30-Ft. Sand	2678	- 2710	32
Slate	2710	- 2745	35
4th Sand	2745	- 2765	20
Total depth		2784	