



Teagarden

5245  
x

SMITH

MT Higginbotham

WE  
Higginbotham

we  
Higginbotham

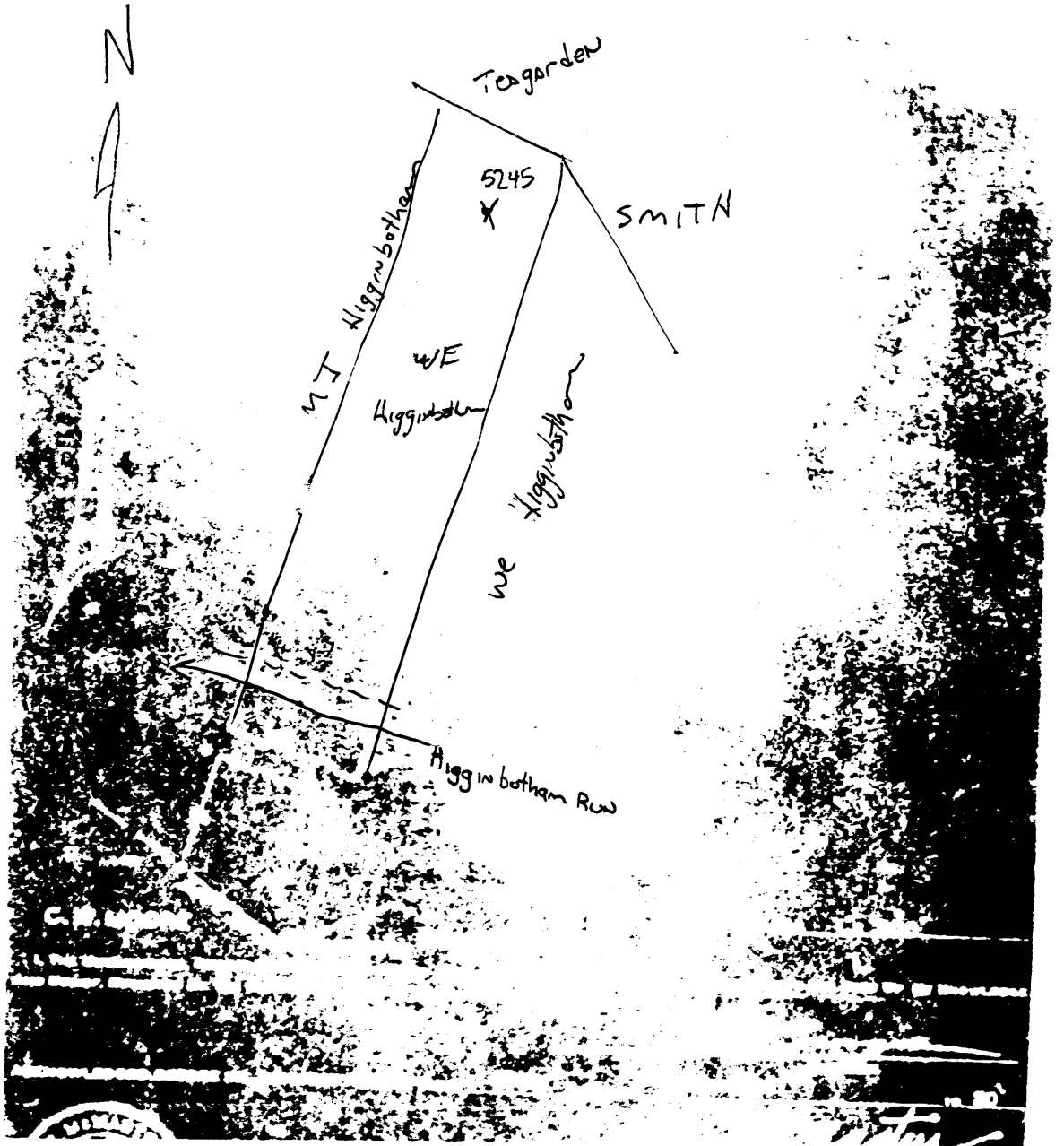
Higginbotham Run

MOORE

6-20

church dist

30029



Church District, Wetzel County, W. Va.

By Pittsburgh &amp; W. Va. Gas Co., Clarksburg, W. Va.

Abandoned under permit Wet-29.

On 25 acres, surface and minerals owned by M. J. Higginbotham et al.,

R. F. D. No. 1, Box 98, Glover Gap, W. Va.

Well completed August 9, 1917.

Elevation, 1400' L.

13" conductor, 113'; 10" casing, 304'; 8 1/4", 1548'; 6 3/8", 2350';  
5 1/2", 2580'.

Coal was encountered at 1035-1041 and 1133-1140'.

Abandonment reported to Dept. of Mines Nov. 22, 1930.

Located June 6, 1917; began drilling, June 30, 1917; completed,

Aug. 9, 1917; began drilling deeper, Oct. 2, 1930; completed  
deepening, Nov. 12, 1930.

Well was not shot.

Salt water at 1915, 1930, and 1955'.

5 1/2" hole. Gas well. Dry on deepening.

Record to RCT from Mrs. Griffith Sept. 10, 1938.

	Top.	Bottom.	Thickness.
Slate	0	50	50
Slate	50	120	70
Red rock	120	235	115
Lime	235	365	120
Lime	365	600	235
Slate	600	650	50
Slate	650	800	150
Lime	800	905	105
Lime	905	950	45
Lime	950	1035	85
Coal, Mapletown (Sewickley)	1035	1041	6
Lime	1041	1045	4
Lime	1045	1133	88
Coal, Pittsburgh	1133	1140	7
Lime	1140	1150	10
Slate	1150	1200	50
Lime	1200	1250	50
Murphy Sand, white, soft	1250	1290	40
Red rock, medium	1290	1400	110
Lime, dark, medium	1400	1490	90
Slate, dark, soft	1490	1500	10
Lime, dark, hard	1500	1520	20
Little Bunkard Sand, light, hard	1520	1570	50
Slate, dark, soft	1570	1585	15
Big Bunkard Sand, dark, hard	1585	1639	54
Lime, light, hard	1639	1675	36
Lime, light, hard	1675	1770	95
Sand, light, hard	1770	1830	60
1st Salt Sand, dark, hard (water at 1915, 1930, and 1955')	1895	1975	80
Slate, black, soft	1975	2031	56
2nd Salt Sand, light, hard	2031	2056	25
Slate, dark, medium	2056	2085	29
3rd Salt, white, hard (gas, 2150')	2085	2175	90
Slate, dark, soft	2175	2262	87
Nexton Sand, white, hard	2262	2332	70
Big lime, white, hard	2335	2375	40

(OVER)

W. E. HIGGINBOTHAM NO. 5245 WELL (Continued).

	Top.	Bottom.	Thickness.
Big Injun Sand, white, hard (gas, 2408-18')	2375	- 2602	227
Slate, dark, soft	2602	- 2640	38
Lime, light, hard	2640	- 2760	120
Slate, dark, soft	2760	- 2895	135
Lime, light, hard	2895	- 2920	25
Sand, white, hard	2920	- 2930	10
Slate, dark, soft	2930	- 3025	95
Lime, white, hard	3025	- 3063	38
Slate, dark, soft	3063	- 3080	17
50-Ft. Sand, light, hard	3080	- 3095	15
Slate, dark, soft	3095	- 3092	2
30-Ft. Sand, white, hard	3097	- 3115	18
Slate-Shell, dark, soft	3115	- 3145	30
Critty lime, white, hard	3145	- 3187	42
Slate, dark, soft	3187	- 3205	18
Gordon Stray Sand, light, hard	3205	- 3222	17
Red rock, soft	3222	- 3224	2
Gordon Sand, light, hard (oil, 3235-37')	3224	- 3267	43
Slate, dark, soft	3267	- 3296	29
4th Sand, light, hard	3296	- 3324	28
Slate, dark, soft	3324	- 3345	21
5th Sand, dark, hard	3345	- 3375	30
Slate, dark, soft	3375	- 3400	25
Slate-Shell, dark, soft	3400	- 3601	201
Total depth		3601	