

39° 35' 00"

Latitude

80° 42' 30"

Longitude

2.57s
1.76w

Topo Location

7.5' Loc. _____ 15' Loc. _____
(calc.) _____

Company Manufact It & Ht

Farm Thomas O'BRIEN # 1339

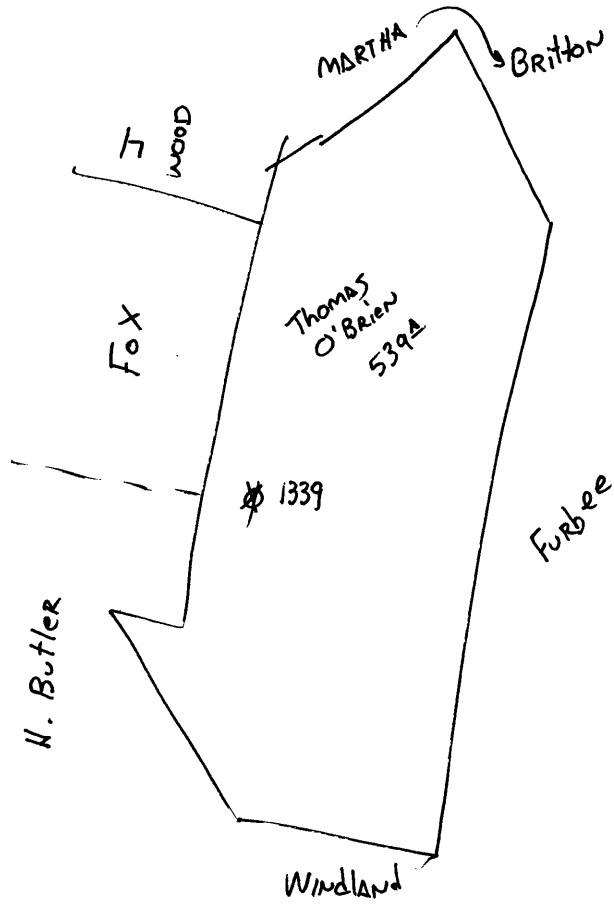
15' Quad _____
(sec.)

7.5' Quad PINE GROVE

District GREEN

WELL LOCATION PLAT

County 103 Permit 30058



Green District, Wetzel County, W. Va.
 By The Manufacturers Light & Heat Co., 800 Union Trust Bldg.,
 Pittsburgh, Pa.
 On 537 acres, surface owned by Thomas O'Brien (now Citizens
 Mutual Trust Co.), Wheeling, W. Va., and mineral rights
 by ML&N Co., Pittsburgh, Pa.
 Drilled prior to June 1, 1929.
 Elevation, 760' B.
 1 1/2" conductor, 16'; 5-3/16" casing, 1845'; 3" tubing, 2575'.
 Packer, 5-3/16 x 3".
 Coal was encountered at 475-477'.
 Abandonment reported to Dept. of Mines June 25, 1931.
 Gas well.

WET-58-A

	Top.	Bottom.	Thickness.
Pittsburgh Coal	475	- 477	2
Little Dunkard Sand	825		
Big Dunkard Sand	900		
Big Lime	1645	- 1725	80
Keener Sand (gas, 1802')	1725		
Big Injun Sand	- 1971	
50-Ft. Sand	2300	- 2340	40
Stray Sand	2475	- 2492	17
Gordon Sand (gas, 2560-2570')	2554	- 2575	21
Total depth		2575	