

39°45'00"

Latitude

80°32'30"

Longitude

2.05s
1.62w

Topo Location

7.5' Loc. _____ 15' Loc. _____
(calc.) _____

Company Manufact Lt + Rt _____

Farm Lindsey A Burley #3005 _____

15' Quad _____
(sec.) _____

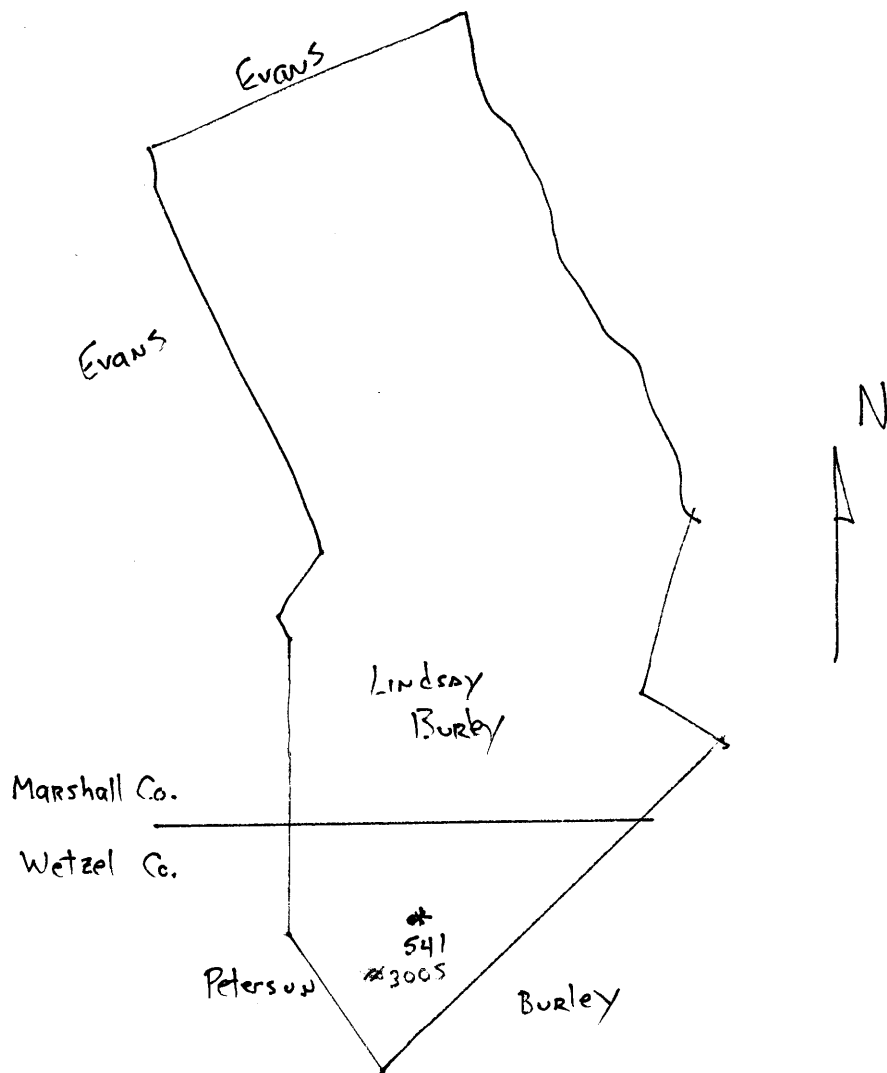
7.5' Quad Littleton _____

District CENTER _____

WELL LOCATION PLAT

County 103 Permit 30083







Note:
 This well was drilled by
 the Standard Oil Co. and is
 on Blk. No. 3005

EXHIBIT A - CERTIFICATE

THE UNDERSIGNED HEREBY CERTIFY THAT THIS MAP SHOWS THE LOTS AND SHOWS
 ALL THE INTERESTS IN THE BLOCKS OF METTEL CO. AND BELONGERS TO THE
 METTEL CO. AND IS A TRUE AND CORRECT COPY OF THE ORIGINAL RECORDS OF THE
 COUNTY OF LOS ANGELES, CALIFORNIA.

W. G. Prindle
 COUNTY CLERK

WET-83-A

Center District, Wetzel County, W. Va.

By The Manufacturers Light & Heat Co., 800 Union Trust Bldg.,
Pittsburgh, Pa.On 115.88 acres, surface owned by Lindsey A. Burley, Woodruff,
W. Va., and mineral rights by ML&H Co., Pgh., Pa.

Drilled prior to June 1, 1929.

Elevation, 1250' B.

10" casing, 231'; 8 $\frac{1}{4}$ " , 1523' 4"; 6-5/8" , 2193' 5".

Coal was encountered at 670-675, 885-889, and 990-998'.

Abandonment reported to Dept. of Mines July 5, 1932.

Producing hole.

	Top.	Bottom.	Thickness.
Clay	0	- 10	10
Sand	50	- 70	20
Red rock	160	- 175	15
Sand	240	- 255	15
Sand	400	- 405	5
Sand	635	- 670	35
Waynesburg Coal	670	- 675	5
Mapletown (Sewickley) Coal	885	- 889	4
Pittsburgh Coal	990	- 998	8
Sand	1020	- 1050	30
Red rock	1075	- 1100	25
Red rock	1118	- 1160	45
Sand	1200	- 1205	5
Red rock	1240	- 1300	60
Sand	1375	- 1385	10
Red rock	1405	- 1435	30
Pink rock	1460	- 1480	20
Big Dunkard Sand	1500	- 1535	35
Gas Sand	1597	- 1625	28
1st Salt Sand	1760	- 1785	25
2nd Salt Sand	1850	- 1920	70
3rd Salt Sand	1980	- 2020	40
Pink rock	2080	- 2100	20
Lime	2135	- 2243	8
Big Lime	2150	- 2190	40
Big Injun Sand (show of gas, 2215')	2190	- 2440	250
Pink rock	2910	- 2920	10
50-Ft. ? Sand	3000	- 3015	15
Gordon Sand (oil at 3062'--est. 2 to 5 bbls. per day)	3057	- 3078	21
Total depth			3078