

39° 32' 30"

Latitude

80° 32' 30"

Longitude



1.52s  
1.42w

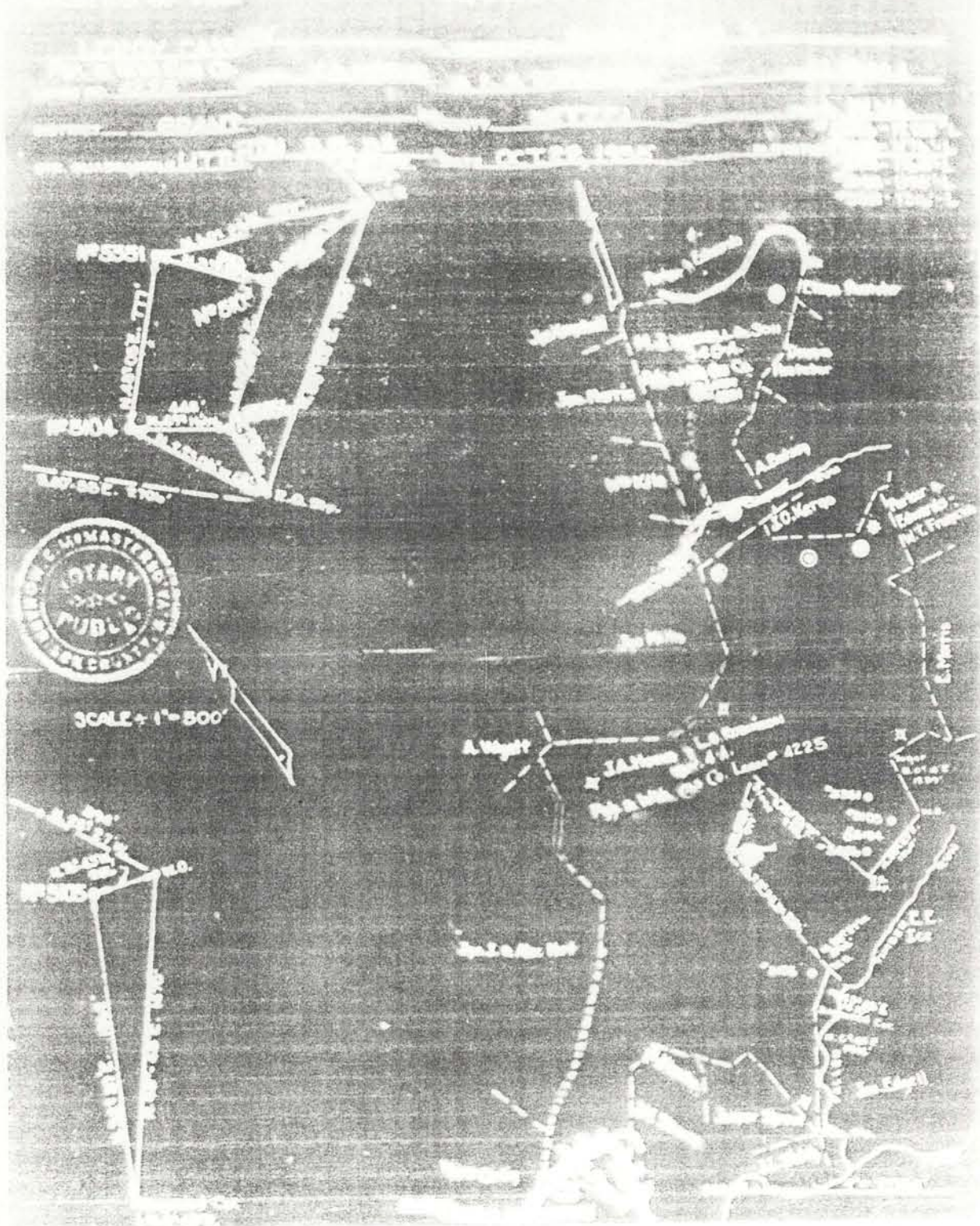
**Topo Location**

7.5' Loc. \_\_\_\_\_ 15' Loc. \_\_\_\_\_  
\_\_\_\_\_ (calc.) \_\_\_\_\_

Company Leroy Cassidy  
Farm Robinson Hogue #5056  
15' Quad \_\_\_\_\_  
(sec.)  
7.5' Quad Big Run  
District Grant

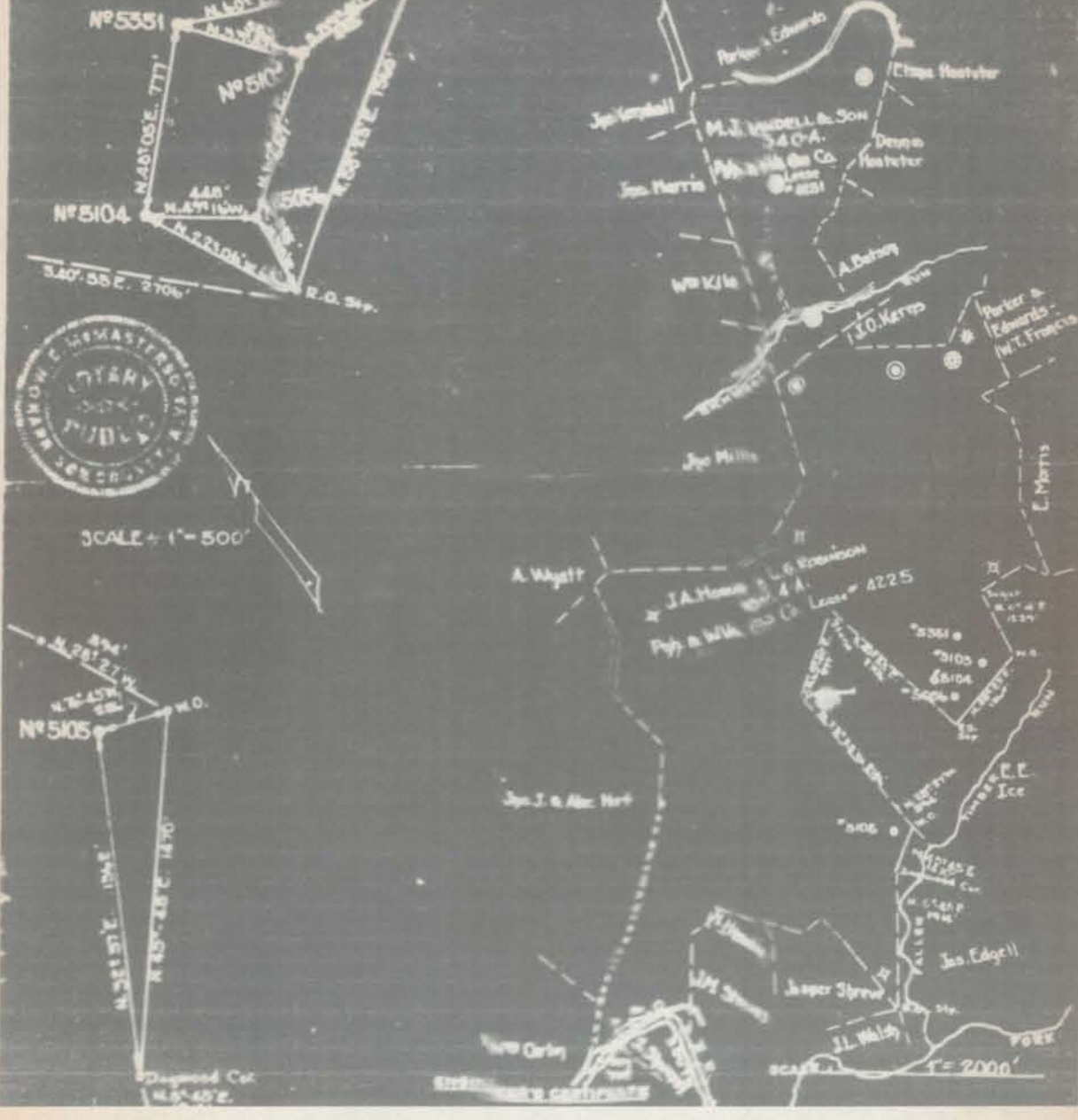
**WELL LOCATION PLAT**

County 103 Permit 30198



LOCATION OF WELL No. 5105, 5104, 5106, 5056 & 5551 TO BE ABANDONED

LEROY CASSIDY  
Pip. & WVA GAS CO.  
LEASE NO. 4225  
BY J.A. HOGUE & L.G. ROBINSON  
RENO, N.D.  
DISTRICT GRANT COUNTY WETZEL STATE N.V.A.  
GTR. QUADRANGLE LITTLETON S.E. 54 DATE OCT 22, 1955  
ELEVATIONS:  
5084 - 11225' L  
5105 - 1174' L  
5104 - 1185' L  
5103 - 1195' L  
5551 - 1516' L



SCALE = 1" = 500'

SCALE = 1" = 2000'

Great District, Wetzel County, W. Va.

By Leroy Cassidy, Reno, Ohio.

Abandoned under permit Wet-198, issued 5-22-36. (May report).

Elevation, 1225' L.

10" casing, 622'; 3 1/2" , 1586'; 6 1/2" , 2285'; 5 1/2" , 3072'; 2" tubing, 3184'.

Pittsburgh &amp; W. Va. Gas Co. well.

Completed July 22, 1914.

Record filed with Dept. of Mines May 18, 1936. (Not on DM form).

Record to RCF from Mrs. Griffith Sept. 16, 1938.

	Top.	Bottom.
Broken formation	0	490
Shale	490	520
Coal	520	524
Slate and shells	524	610
Red rock	610	620
Sand lime	620	650
Coal	<del>(Shale, -650-6551)-</del>	652 - 658
Lime and sand	<del>-(6551)</del>	658 - 695
Red rock	695	720
Slate and shells	720	790
Lime	790	800
Slate	800	840
Lime	840	920
Slate and shells	920	990
Sand	990	1007
Shale	1007	1018
Coal, <i>Pittsburgh</i>	1018	1026
Lime and slate	1026	1085
Sand	1085	1100
Slate	1100	1135
Red rock	1135	1145
Slate and shells	1145	1223
Red rock	1223	1253
Slate and shells	1253	1403
Red rock	1403	1423
Slate and shells	1423	1460
Shale	1460	1490
Big Dunkard Sand	1490	1520
Slate	1520	1570
Lime	1570	1635
Slate and shells	1635	1680
Gas Sand	1680	1740
Slate	1740	1835
1st Salt Sand	1835	1895
Slate	1895	1970
2nd Salt Sand	1970	2080
Slate and lime	2080	2140
Merton Sand	2140	2150
Red rock	2150	2212
Lime	2212	2223
Slate	2223	2232
Lime	2232	2237
Pencil Cave	2237	2240
Big Lime	2240	2315
Big Injun Sand (show gas at 2327'; show oil at 2335'; show gas at 2343')	2315	2480
Slate	2480	2483

(OVER)

ROBINSON & HOGE NO. 5056 WELL (Continued).

	Top.	Bottom.
Squaw Sand	2483	- 2520
Slate and shells	2520	- 2625
Sand	2625	- 2645
Slate and shells	2645	- 2860
Sandy lime	2860	- 2875
Slate and shells	2875	- 3058
Sandy lime	3058	- 3088
Slate	3088	- 3129
Shells (gas at 3132')	3129	- 3132
Slate (oil and gas at 3134')	3132	- 3137
Sand	3137	- 3152
Total depth		3152

The Philadelphia COMPANY of W. Va. 103-30198

Record of Well No. 5056 Located on Robinson-Hoge Farm Oct. 28 1914  
 Grant, District Wetzel County W. Va. State  
 Division dl District No. 12 Drilled under Well Order 755  
 Rig built by John Craig Began May 4 1914 Completed May 14 1914  
 Well drilled by W. M. Barmhart Began May 19 1914 Completed July 22 1914  
 Depth of Well 3152 feet Size of Hole 6 9/8 Producing Oil.  
 Elev: 1225

CASED WITH REMARKS

AMOUNT	SIZE	KIND	REMARKS
16'	13"	Wood	
662"	10"	Old	
1586'	8 1/4"	"	
1285	6 9/8"	"	

COAL VEINS Pgh. 1018-1026

FORMATIONS

NAME	TOP	BOTTOM	OIL	GAS	WATER	REMARKS
Big Run sand	1490	1520				
Sub sand	1680	1740				
1st salt sand	1835	1895				
2nd "	1970	2080				
Maxon sand	2140	2160				
Little Limestone	2250	2262				
Big Limestone	2271	2315				
Big Limestone	2315	2480	2327 <sup>52</sup>	2327 <sup>52</sup>		Very small show steel line top Big Limestone.
Gordon clay	3062	3088				
Gordon sand	3137		3144			
Total depth		3152				