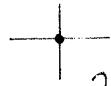


39° 37' 30"

Latitude

80° 37' 30"

Longitude



2.57 S
2.03 W

Topo Location

7.5' Loc. _____ 15' Loc. _____
(calc.) _____

Company South Penn Oil

Farm J A Lantz #4

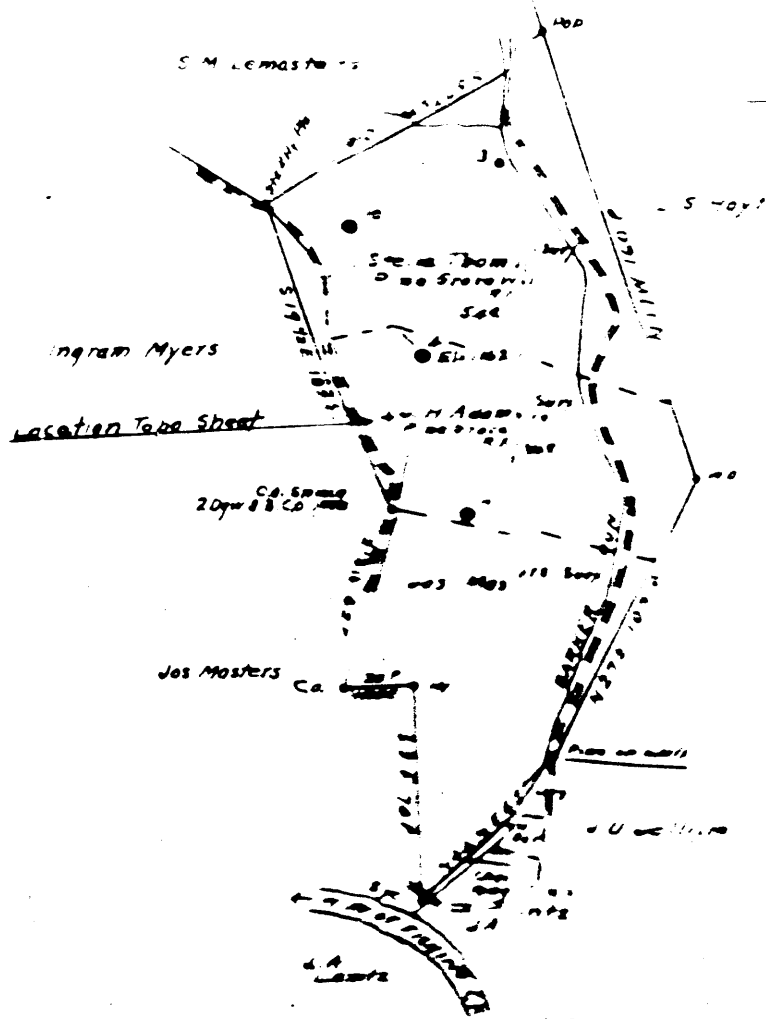
15' Quad _____
(sec.)

7.5' Quad PINE GROVE

District GRANT

WELL LOCATION PLAT

County 103 Permit 30202



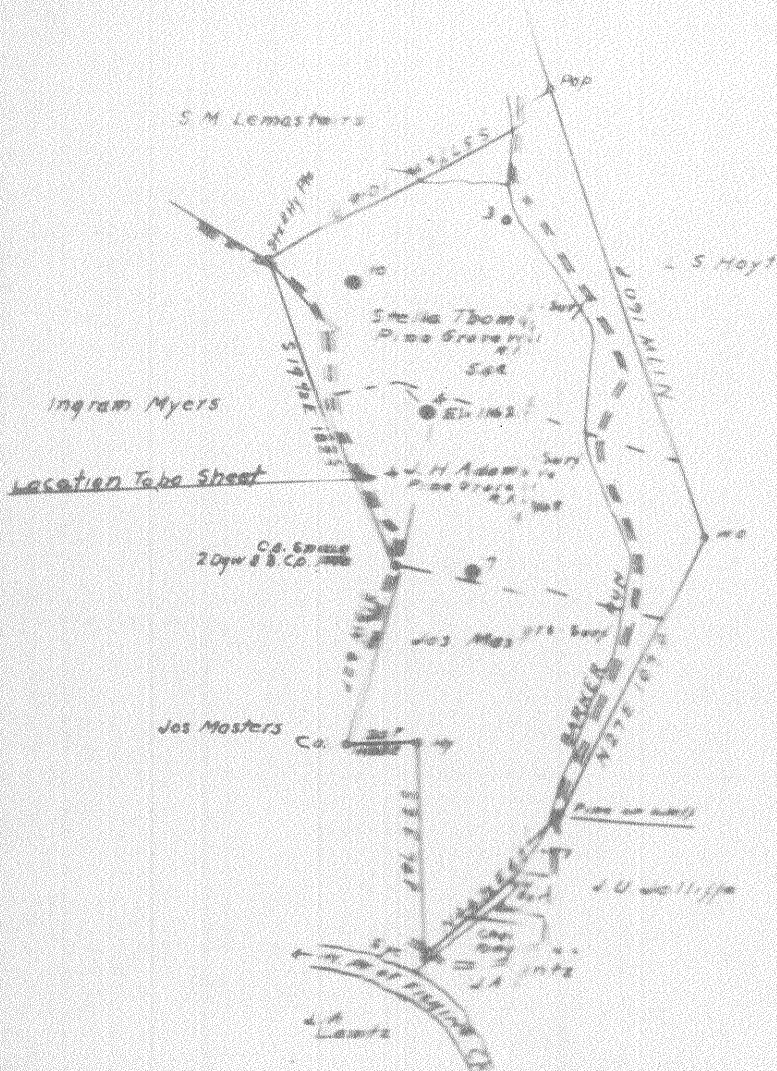
Well to be Abandoned

Well Owned by State

Company	South Penn Oil Co.
Address	411 7th Ave. Pittsburgh, Pa.
Name	J. A. Lantz
Tract	Acres 125 Lease No. 4666

STATE OF WEST VIRGINIA
 DEPARTMENT OF MINES
 OIL AND GAS DIVISION
 CHARLESTON

WELL LOCATION MA



Well to be Abandoned

W. Order No. 50710

Company South Penn Oil Co.
 Address 411 7th Ave. Pittsburgh, Pa.
 From A. Lantz
 Tract - Acres 125 Lease No. 45600

STATE OF WEST VIRGINIA
 DEPARTMENT OF MINES
 OIL AND GAS DIVISION
 CHARLESTON
 WELL LOCATION MA

Grant District, Wetzel County, W. Va.
 By South Penn Oil Co., Chamber of Commerce Bldg., Pittsburgh, Pa.
 On 92 acres, surface owned by J. H. Adams, R. F. D. No. 1, Pine
 Grove, W. Va., and mineral rights by Ingram Myers et al.,
 New Martinsville, W. Va.

Elevation, 1162.12' L.

10" casing, 557' (pulled); 8 $\frac{1}{4}$ " , 1490' (pulled); 6-5/8" , 1893';
 5-3/16" , 2393'.

Coal was encountered at 948-954'.

4 $\frac{1}{2}$ x 4" liner, 458'.

Abandonment reported to Dept. of Mines June 26, 1936.

Oil well.

	Top.	Bottom.
Pittsburgh Coal	948	954
Dunkard Sand	1435	1470
Salt Sand	1650	1700
Little Lime	2120	2130
Pencil Cave	2130	2135
Big Lime	2135	2200
Big Injun Sand	2200	2350
Red rock	2875	2905
Gordon Stray Sand	2975	
Gordon Sand (1st oil, 3011')	3008	
Total depth		3028 $\frac{1}{2}$

WET-202-A