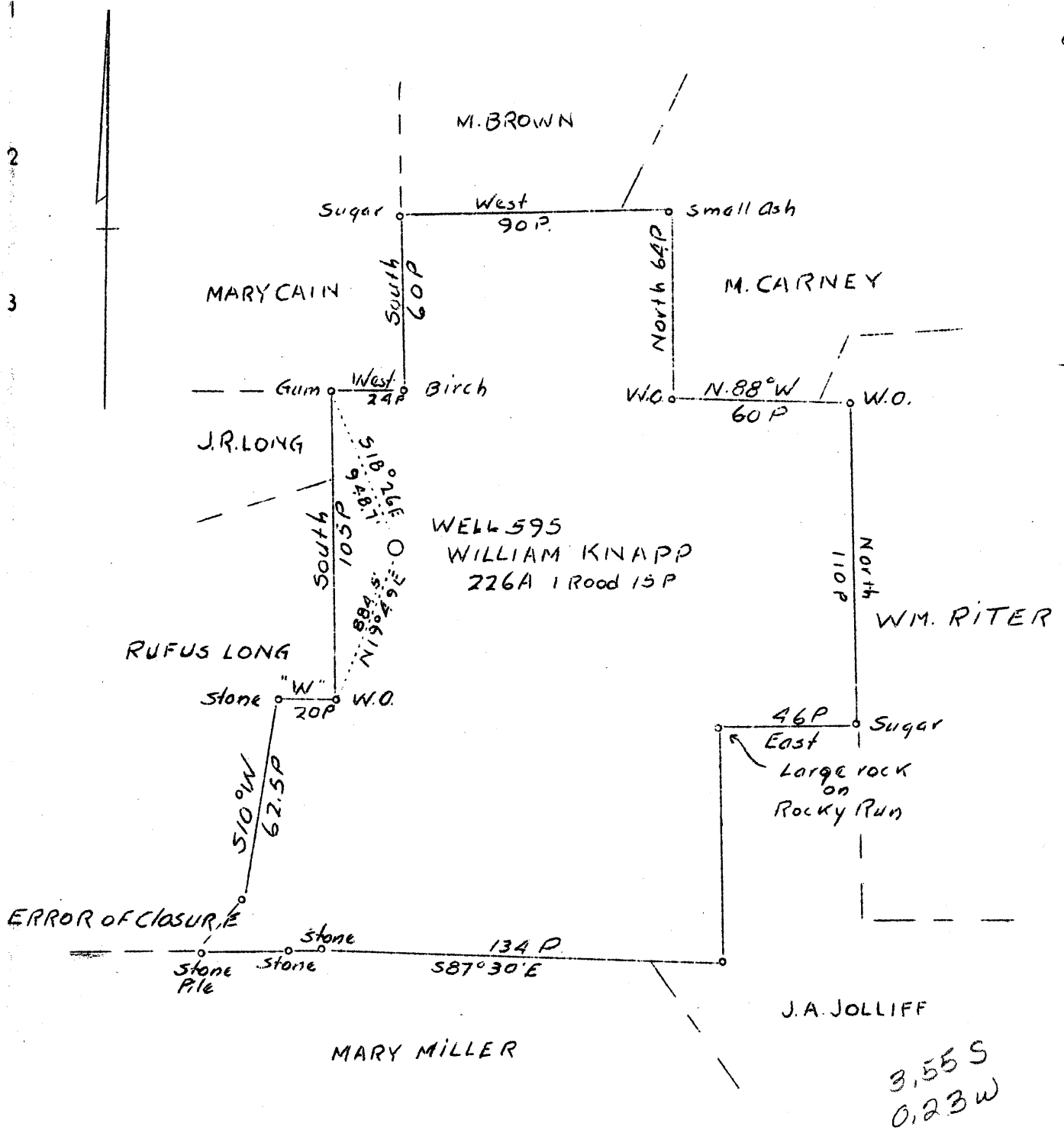


LATITUDE 39° 45'

LONGITUDE 80° 55'



Company- Union Gasoline & Oil Co. R.P.
 Address- Riley Low Bldg., Wheeling, W. Va.
 Farm William Knapp
 Tract Acres 226.34 Lease No. 4274
 Well (Farm) No. 4 Serial No. 595
 Elevation (Spirit Level) 1320'
 Quangle Littleton
 County Wetzel District Center
 Engineer H. D. O'Connor
 Engineer's Registration No.
 File No. 595 Drawing No. Y-7-544
 Date 11-28-36 Scale 1" 50 RD S.-825'

STATE OF WEST VIRGINIA
 Department of Mines
 OIL AND GAS DIVISION
 CHARLESTON

WELL LOCATION MAP

File No. WET-217 A

+ Denotes location of well on U. S. Topographic Map, scale 1 to 62,500, latitude and longitude lines being represented by border lines as shown.

- Denotes one inch spaces on border line of original tracing.

Center District, Wetzel County, W. Va.
 By Union Gasoline & Oil Corp., 209 Riley Law Bldg., Wheeling, W. Va.
 On 226 acres, surface owned by Anna Freundorfer First Natl. Bank,
 Cameron, W. Va., and minerals by Union Oil Corp., Wheeling, W. Va.
 Drilled prior to June 1, 1929. **HP-217-A**
 Elevation, 1320' L.
 13" conductor, 16"; 10" casing, 365' 4"; 1570' 2"; 6 3/4", 2255' 2".
 Coal was encountered at 740-745, 969-973, and 1069-1079'.
 Abandonment reported to Dept. of Mines Dec. 1, 1936.
 Oil well. Record to ROT from D. G. Courtney (Dept. of Mines) 5-5-37.

	Top.	Bottom.	Thickness.
Slate	0	13	13
Fairview (Waynesburg) Coal	740	745	5
Mapletown (Soudakloy) Coal	969	973	4
Pittsburgh Coal	1069	1079	10
Red rock	1150	1160	10
Murphy Sand	1160	1180	20
Red rock	1265	1310	45
Red rock	1340	1350	10
Red rock	1399	1410	11
Little Dunkard Sand	1458	1487	29
Big Dunkard Sand	1543	1612	69
Gas Sand	1680	1735	55
1st Salt Sand	1863	1895	32
2nd Salt Sand (7 builers water per hour at 1970'; hole full water at 1985')	1910	2000	90
3rd Salt Sand	2015	2115	100
Little Lime	2185	2210	25
Pencil Gave	2210	2216	6
Big Lime	2216	2275	59
Big Injun Sand (little gas, 2379-2380'; break in Big Injun, 2367-2392')	2275	2525	250
Pink rock	3000	3010	10
Gordon Stray Sand	3119	3124	5
Gordon Sand (oil, 3127-3128'; hard, 3128-3132')	3126	3138	12
Total depth		3139	