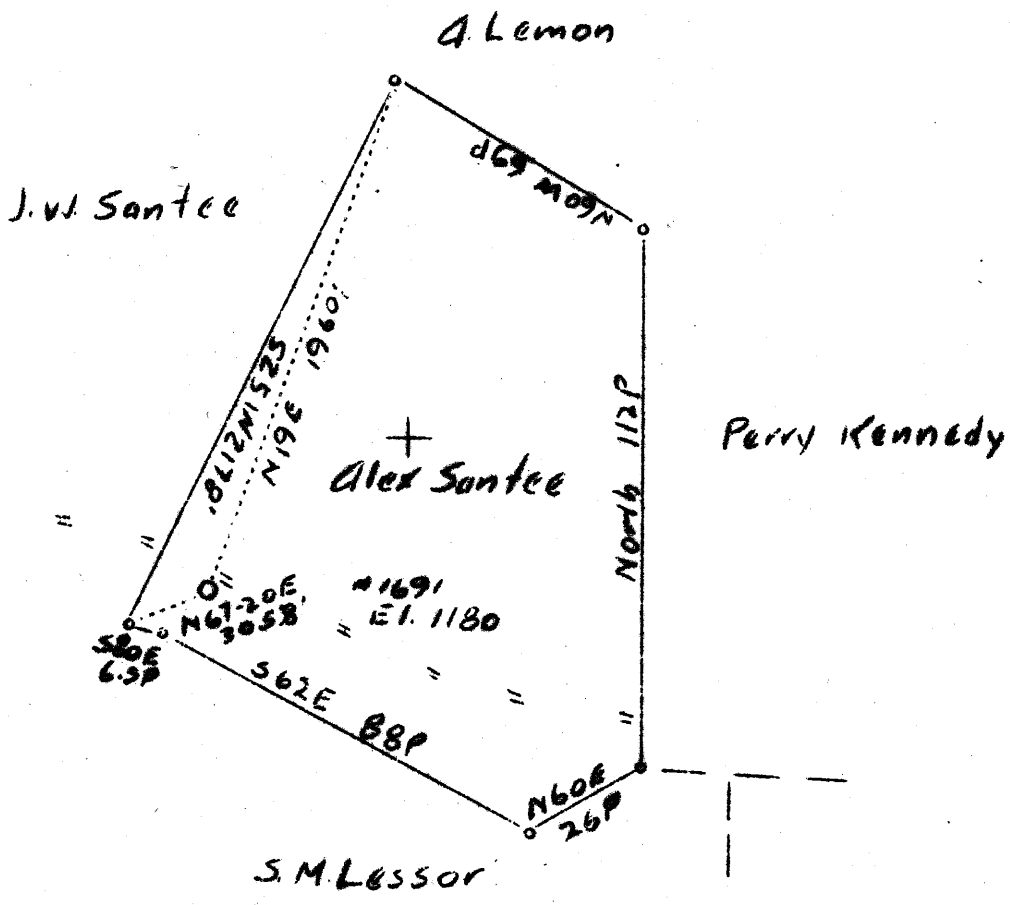


LATITUDE 39° 45'

LONGITUDE 80° 20'



Coal owned by Fred Frisbee & 9 others

4.13 ~~Y.18~~ W  
5.31 ~~Y.38~~ R

Company The Manufacturers Light & Heat  
 Address 800 Union Tr. Bg. Pittsburgh  
 Farm Alex Santee  
 Tract Acres 75 Lease No. 3886  
 Well (Farm) No. 1 Serial No. 1691  
 Elevation (Spirit Level) 1180.0  
 Quadrangle Mannington **(MC)**  
 County Wetzel District Church  
 Engineer Fred H. Sachor  
 Engineer's Registration No. \_\_\_\_\_  
 File No. \_\_\_\_\_ Drawing No. Y-7-642  
 Date 4-28-57 Scale 1" = 660'

STATE OF WEST VIRGINIA  
 Department of Mines  
 OIL AND GAS DIVISION  
 Charleston

WELL LOCATION MAP  
 File No. WET-230A

+ Denotes location of well on U. S. Topographic Maps, scale 1 to 62,500, latitude and longitude lines being represented by border lines as shown.

- Denotes one inch spaces on border line of original tracing.

543

WEST VIRGINIA DEPARTMENT OF MINES  
OIL AND GAS DIVISION

WELL RECORD

 Permit No. Drilled in 1914 WET-230-A

 Oil or Gas Well Gas  
(Kind)

 Company The Manufacturers Light & Heat Co.  
 Address 800 Union Trust Bldg., Pittsburgh, Pa.  
 Farm Alex Santee Acres 75  
 Location (waters).....  
 Well No. 1 - 1691 Elev. 1180  
 District Church County Wetzel  
 The surface of tract is owned in fee by  
Charles Santee Address Burton, WVa.  
 Mineral rights are owned by The Manufacturers  
Light & Heat Co. Address Pittsburgh, Pa.  
 Drilling commenced Jan. 30, 1914  
 Drilling completed Apr. 17, 1914  
 Date shot Apr. 21, 1914 Depth of shot 30-Ft. Sand  
 Open Flow /10ths Water in.....Inch  
 /10ths Merc. in.....Inch

Casing and Tubing	Used in Drilling	Left in Well	Packers
Size			Kind of Packer
16.....			
13.....			
10.....	<u>128'</u>		Size of <u>3 x 6 5/8</u>
8 1/4.....	<u>1460'</u>	<u>1460'</u>	
6 5/8.....	<u>2190'</u>	<u>2190'</u>	Depth set.....
5 3/16.....	<u>2918'</u>		
3.....			Perf. top.....
2.....			Perf. bottom.....
Liners Used.....			Perf. top.....
			Perf. bottom.....

 Volume.....Cu. Ft.  
 Rock Pressure.....lbs.....hrs.  
 Oil.....bbls., 1st 24 hrs.  
 Fresh water 65 feet.....feet  
 Salt water.....feet.....feet

CASING CEMENTED.....SIZE.....No. FT.....Date

 COAL WAS ENCOUNTERED AT 885 FEET 48 INCHES  
984 FEET 72 INCHES.....FEET.....INCHES  
 FEET.....INCHES.....FEET.....INCHES

Formation	Color	Hard or Soft	Top	Bottom	Oil Gas or Water	Depth Found	Remarks
Conductor			0	13			
Water				65	Water		
Mapletown Coal			885	889			
Pittsburgh Coal			984	990			
Little Dunkard			1374	1440			
Big Dunkard			1460	1505			
Gas Sand			1670	1745			
1st Salt Sand			1820	1870			
2nd Salt Sand			1928	1998			
Red Rock			2040	2100			
Maxon Sand			2100	2175			
Pencil Shale Slate			2175	2182			
Big Lime			2182	2243			
Big Injun Sand			2243	2475	Gas	2308-2315	
50-Foot Sand			2905	2942	Gas	2329-2334	
30-Foot Sand			2945	3020	Gas	3001	
Gordon Stray			3025	3063	Show of oil	3009	
Gordon Sand			3100	3140			
Fourth Sand			3163	3191			
Fifth Sand			3219	3237			
Bayard Sand			3393	3395	Slight show	of gas	
Slate			3395	3445			
Total depth				3445			

