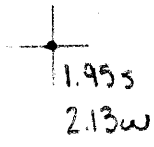


39° 35' 00"

Latitude

86° 30' 00"

Longitude



Topo Location

7.5' Loc. _____ 15' Loc. 1.955
 _____ (calc.) 2.13w

Company Victor E Tennant

Farm S J Kilcoyne # 2

15' Quad Littleton SE
(sec.)

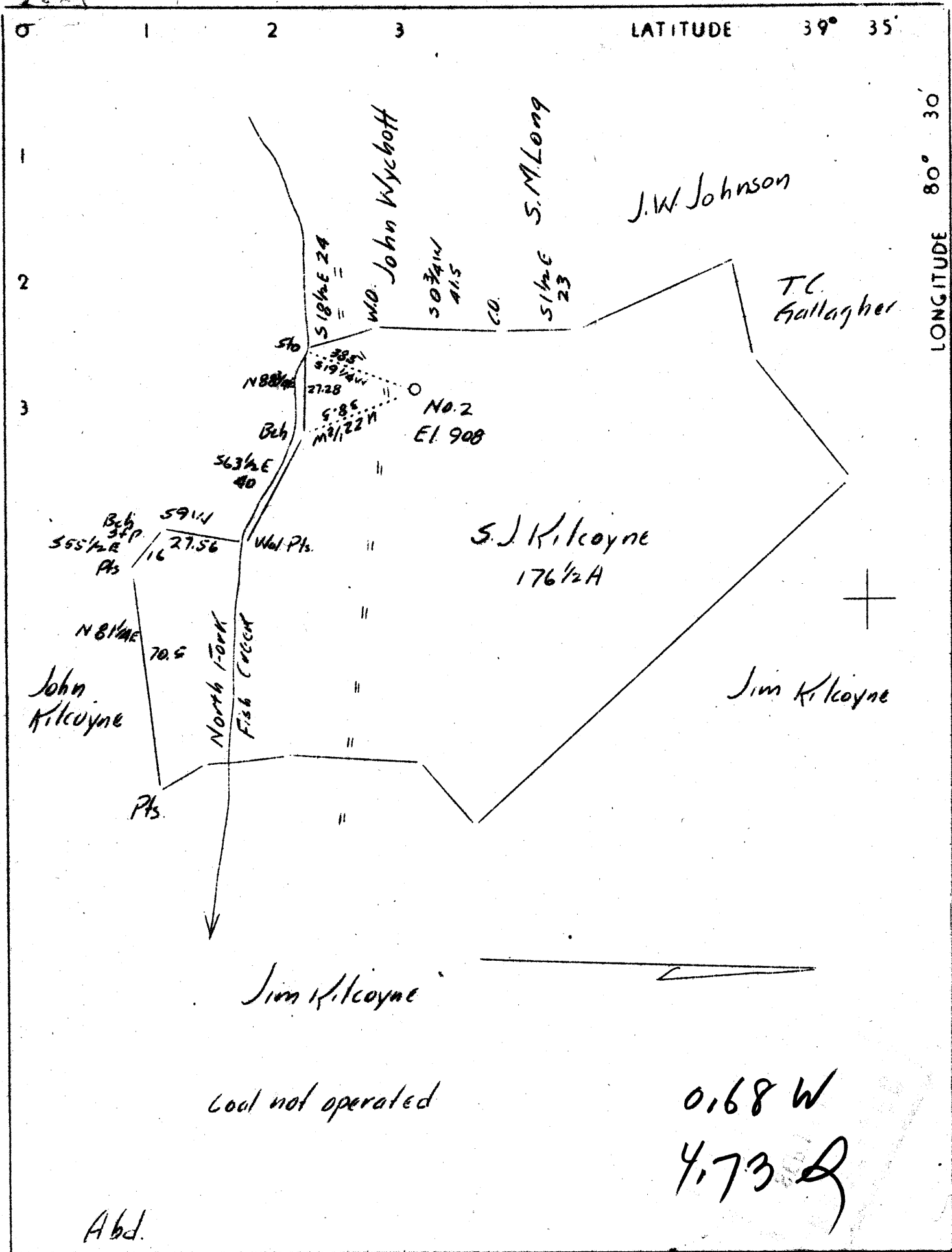
7.5' Quad Big Run

District Grant

WELL LOCATION PLAT

County 103 Permit 30242

(CAL)



Company	Victor E. Tennant
Address	Fairview, W.Va.
Farm	S.J. Kilcoyne
Tract	1 Acres 176 Lease No.
Well (Farm) No.	2 Serial No.
Elevation (Spirit Level)	908
Quadrangle	Littleton
County	Wetzel District
Engineer	A.L. Headley
Engineer's Registration No.	
File No.	Drawing No.
Date	9-3-1937 Scale 1"=40 Poles

STATE OF WEST VIRGINIA
Department of Mines
OIL AND GAS DIVISION
CHARLESTON

WELL LOCATION MAP
File No. VET-242A

+ Denotes location of well on United States Topographic Maps, scale 1 to 62,500, latitude and longitude lines being represented by border lines as shown.

— Denotes one inch spaces on border line of original tracing.

RECEIVED
SEP 14 1937
GENERAL INVESTIGATIVE
DIVISION

Grant District, Wetzel County, W. Va.

By Victor E. Tennant, Fairview, W. Va.

Abandoned under permit Wet-242, issued 9-13-37 (Sept. report).

Smith plat.

On east side of North Fork of Fish Creek.

Location no good (cross gives it as 0.68 mi. W. of 80° 30' and
4.73 mi. S. of 39° 35') - SE - Littleton Quadrangle.

On 176 acres.

Elevation, 908' L.

Write A. L. Headley for location.

Flat from Smith Sept. 14, 1937.

On 176 acres; minerals owned by S. J. Kilcoyne, Mohley, W. Va.

Drilling commenced Oct. 3, 1922; completed, Jan. 12, 1923.

Open flow, 2/10ths water in 2"; 4/10ths ~~gas~~ in 2". 144

Rock pressure, 140 lbs.

Salt water at 1490'.

10" casing, 234'; 8 1/2", 1186' (pulled); 6 5/8", 1874';

5 1/2", 2750' (506' left inn wall); 2" tubing, 2788'.

Abandonment report to Dept. of Mines not dated.

Record to RCF from Mrs. Griffith Sept. 16, 1938.

	Top.	Bottom.
Mepletown (Sewickley) Coal	540	545
Pittsburgh Coal	638	646
Little Dunkard Sand	1075	1100
Big Dunkard Sand	1160	1228
Gas Sand	1280	1350
Salt Sand	1400	1428
2nd Salt Sand (3 bbls. water, 1490')	1458	1570
Maxton Sand	1600	1667
Little Lime	1824	1836
Pencil Cave	1836	1840
Big Lime	1840	1918
Big Injun Sand (gas, 2/10ths water in 2", at 1974') 60 mcf	1918	2114
Slate	2114	2120
Hard sand	2120	2128
Slate and shells	2128	2446
Berea Sand	2446	2466
Shells	2480	2675
Stray Sand	2675	2720
Gordon Sand (4/10ths w. in 2" at 2760')	2750	2764
Fourth Sand 84 mcf	2767	2773
Total depth		2788