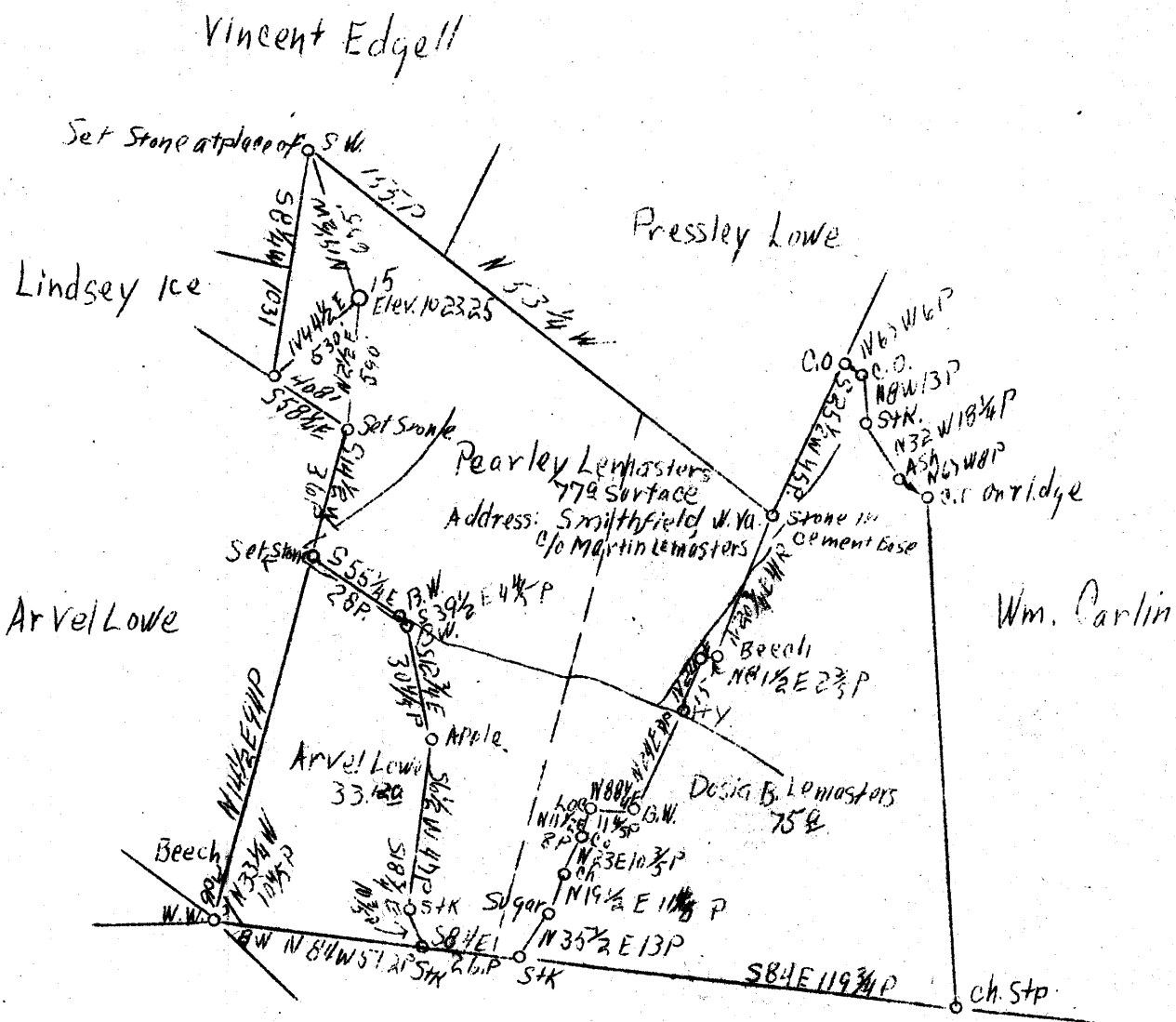


LATITUDE 39° 30'

LONGITUDE 80° 30'



Coal Eliza M. Hoge
 334 Buchanan Ave
 Clarksburg, W. Va.
 c/o Lucien Hoge

Martin Leniastors

4.4 W
 105 1/8

Abd.

Company	South Penn Oil Co.
Address	411 Seventh Ave., Pittsburgh, Pa.
Farm	Isaac Hoge
Tract Acres	400
Lease No.	10215
Well (Farm) No.	15
Serial No.	
Quadrangle Centerpoint	N.E.
County	Wetzel
District	Grant
Engineer	J. C. Tabler
Engineer's Registration No.	
File No.	
Drawing No.	
Date	Feb. 8, 1938
Scale	1" = 800'

STATE OF WEST VIRGINIA
 Department of Mines
 OIL AND GAS DIVISION
 CHARLESTON

WELL LOCATION MAP

File No. Wet-260-a

Denotes location of well on United States Topographic Maps, scale 1 to 62,500, latitude and longitude lines being represented by border lines as shown.

Denotes one inch spaces on border line of original tracing.

RECEIVED

APR 4 1938

POST OFFICE
PRINCETON, NEW JERSEY



Faint, illegible text at the bottom left of the page, possibly bleed-through from the reverse side.

Faint, illegible text at the bottom right of the page, possibly bleed-through from the reverse side.

Grant District, Wetzel County, W. Va.

By South Penn Oil Co., 411 Seventh Ave., Pittsburgh, Pa.

Abandoned under permit Wet-260, issued April 4, 1938. (April report).

SMITH PLAT.

Located 4.4 mi. W. of 80° 30' and 0.03 mi. S. of 39° 30' - NE -
Centerpoint Quadrangle.

On 400 acres; lease No. 10215.

Elevation, 1023.25' L.

Coal owned by Eliza H. Hoge, 334 Buckhannon Ave., Clarksburg, W. Va.,
Lucien Hoge.

Plat from Smith April 3, 1938.

On 400 acres.

Elevation, 1023.25' L.

Surface owned by Pearly Lemasters, Martin Lemasters,
Smithfield, W. Va., and minerals by Lucien Hoge, Jr., et al.,
Clarksburg, W. Va.

Drilling commenced Feb. 9, 1911; completed, April 11, 1911.

Shot April 11, 1911, with 20 qts.

Oil, 15 bbls., 1st 24 hrs.

Salt water at 1993 and 2194'.

10" casing, 302' 2" (pulled); 8 1/4", 1320' (pulled); 6 5/8", 2067';
5 1/2", 2424' 9"; conductor, 16'.

Coal was encountered at 800-806'.

Oil well.

Abandonment reported to Dept. of Mines March 24, 1938.

Record to RCF from Mrs. Griffith Sept. 16, 1938.

	Top.	Bottom.
Pittsburgh Coal	800	- 806
Little Dunkard Sand	1200	- 1230
Big Dunkard Sand	1320	- 1330
Gas Sand	1550	- 1570
First Salt Sand	1610	- 1720
3rd Salt Sand	1790	- 1860
Marion Sand (water at 1993')	1983	- 2016
Little Lime	2030	- 2045
Pancil Cave	2045	- 2050
Big Lime	2050	- 2108
Big Injun Sand (water, 2194')	2108	- 2298
Fifty-foot Sand	2665	- 2675
Stray Sand	2842	- 2877
Gordon Sand (oil, 2924')	2919	-
Total depth		2934