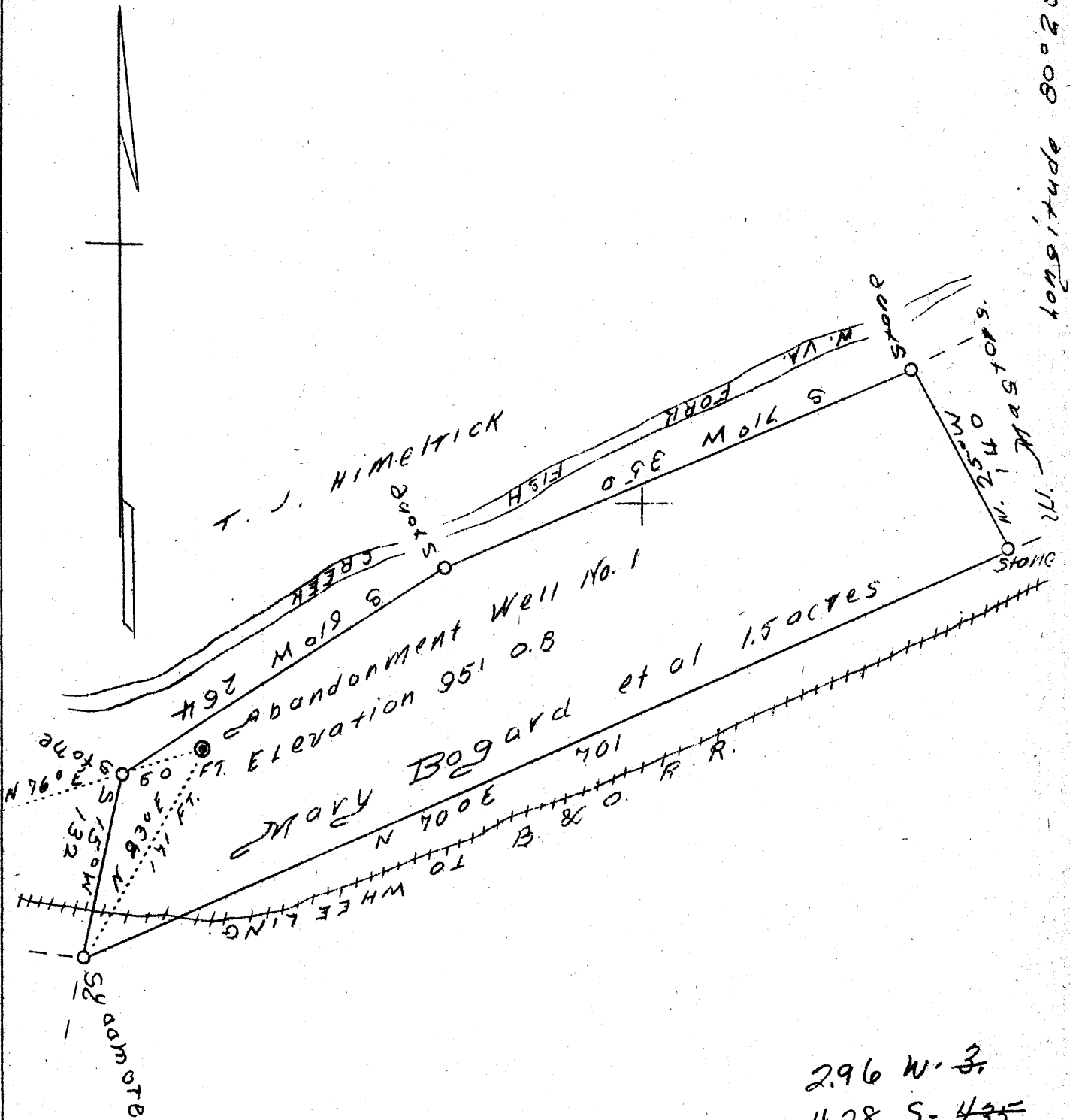


Latitude 39° 45'

Longitude 80° 25'



2.96 W-3
4.28 S-4.35

Company	Wetzel Natural Gas
Address	Hundred, W. Va.
Farm	Mary Bogard, et al
Tract	One
Acres	1-1/2
Well No.	One - Abandonment
Elevation	-
Quadrangle	Mannington, N. W.
County	Wetzel
District	Church
Engineer	David Weed
Eng. Reg. No.	233-16-5767
Date	August 31, 1938
Scale	1" - 100'

STATE OF WEST VIRGINIA
 Department of Mines
 OIL & GAS DIVISION
 Charleston

WELL LOCATION MAP

File No. Wet-277-A