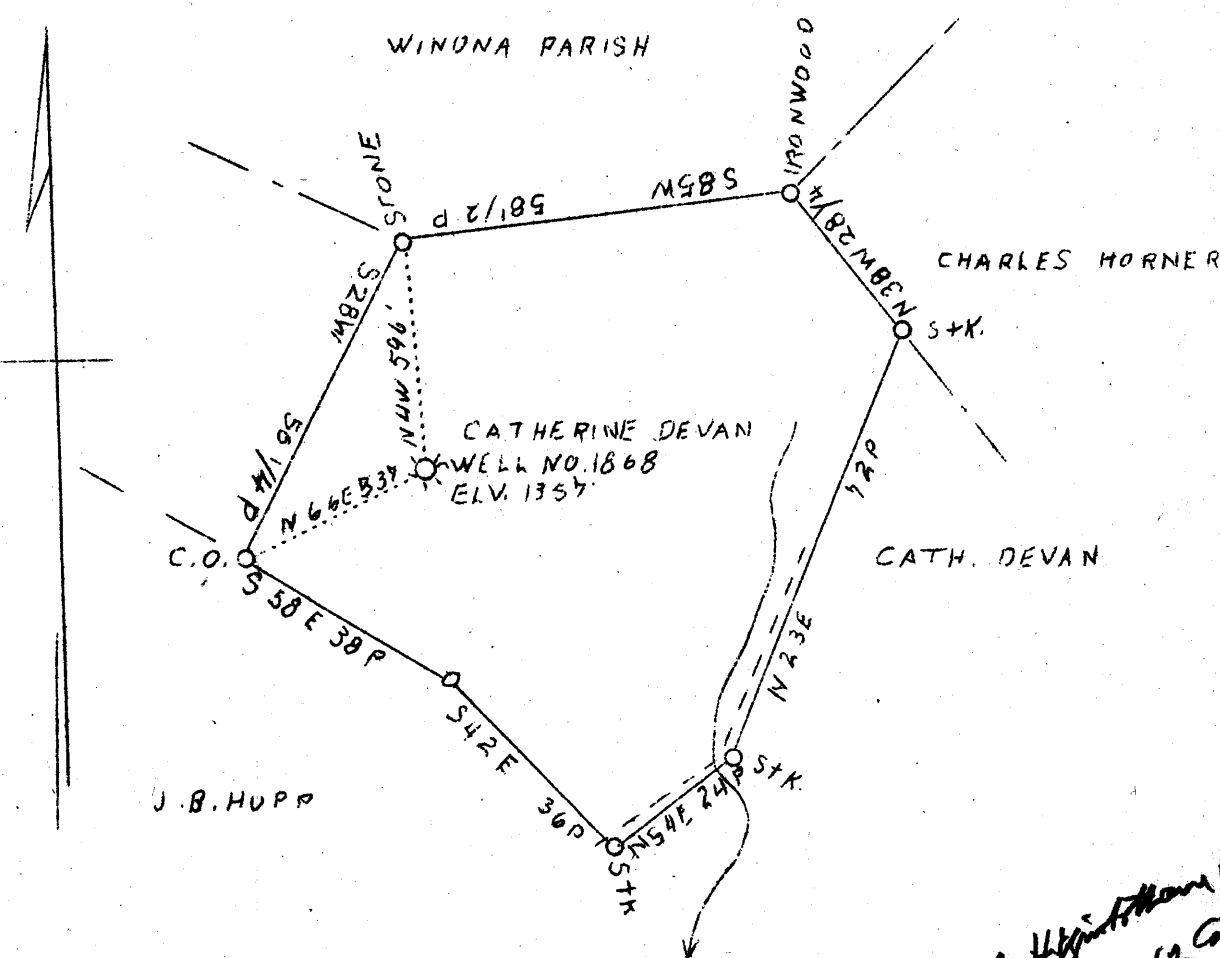


LATITUDE 39° 40'

LONGITUDE 80° 25'



*on W. hillside of No. 2 Higginbotham Run
 0.97 mi NE of summit + 2.4 mi SW of Cottonwood
 1.87 W
 2.53 S*

WELL TO BE ABD.
 COAL OWNED BY UNION TRUST CO.
 OF PITTSBURGH, PA.

OCT - 3 1938

Company	The Mfg. Light & Heat Co.	STATE OF WEST VIRGINIA
Address	800 Union Trust Bldg. Pittsburgh, Pa.	Department of Mines
Farm	Catherine Devan	OIL AND GAS DIVISION
Tract	1	Charleston
Acres	40	
Lease No.	5516	WELL LOCATION MAP
Well (Farm) No.	1	File No. <u>Wet-278 FA</u>
Serial No.	1868	
Elev. (Spirit Level)	1357	x Denotes location of well on U.S. Topographic Maps, scale 1 to 62,500, latitude and longitude lines being represented by border lines as shown.
Quadrangle	Mannington N. 1/4	- Denotes one inch spaces on border line of original tracing.
County	Wetzel	
District	Church	
Eng.	Fred H. Sochor	
Drawing No.	Y - 8 - 93	
Date	Sept. 23, 1938	
Scale	1" = 500'	

WEST VIRGINIA DEPARTMENT OF MINES
OIL AND GAS DIVISION

752

WELL RECORD

Permit No. 2781A Oil or Gas Well Gas
(Kind)

Company The Manufacturers Light & Heat Co.
 Address 800 Union Trust Bldg., Pittsburgh, Pa.
 Farm Catherine Devan Acres 44
 Location (waters) _____
 Well No. 1 - 1868 Elev. 1357'
 District Church County Wetzel
 The surface of tract is owned in fee by Catherine Devan
215 - 31st St., Address Bellaire, Ohio
 Mineral rights are owned by The Mfrs. Light & Heat
Company Address Pittsburgh, Pa.
 Drilling commenced October 26, 1915
 Drilling completed January 14, 1916
 Date shot _____ Depth of shot _____
 Open Flow /10ths Water in _____ Inch
3/10ths Merc. in 4" _____ Inch
 Volume 291 mcf _____ Cu. Ft.
 Rock Pressure 150 lbs. 1 hrs.
 Oil _____ bbls., 1st 24 hrs.
 Fresh water _____ feet _____ feet
 Salt water _____ feet _____ feet

Casing and Tubing	Used in Drilling	Left in Well	Packers
Size			
16.			Kind of Packer
13.			
10.	<u>320</u>	<u>320</u>	Size of
8 3/4.	<u>1674</u>	<u>1674</u>	
6 5/8.	<u>2475</u>	<u>2475</u>	Depth set
5 3/16.			
3.			Perf. top
2.			Perf. bottom
Liners Used			Perf. top
			Perf. bottom

CASING CEMENTED _____ SIZE _____ No. FT. _____ Date _____
 COAL WAS ENCOUNTERED AT 1143 FEET 24 INCHES
1238 FEET 84 INCHES FEET _____ INCHES
 _____ FEET _____ INCHES FEET _____ INCHES

Formation	Color	Hard or Soft	Top	Bottom	Oil Gas or Water	Depth Found	Remarks
Bluff Sand			825	840			
Mapletown Coal			1143	1145			
Pittsburgh Coal			1238	1245			
Little Dunbar			1580	1615			
Big Dunbar			1730	1770			
Gas Sand			1880	1935			
Salt Sand			1990	2125	Water 2015 - 3		3 bailers per hr.
Mazon Sand			2365	2447			
Fencil Cave			2447	2453			
Big Line			2453	2505			
Big Injun			2505	2750	Gas 2529 - 2535		
Squaw Sand			2835	2860			
Fifty-Foot			3170	3210			
Thirty-Foot			3216	3240			
Gordon Stray			3305	3320			
Gordon Sand			3337	3400	Gas 3367 - 3372		
4th Sand			3421	3439			
Total depth				3461			



Formation	Color	Hard or Soft	Top	Bottom	Oil, Gas or Water	Depth Found	Remarks

Date September 26th, 1938

APPROVED THE MANUFACTURERS LIGHT & HEAT CO. Owner

By Harry H. Fowler
Land Department (Title) Office Manager.