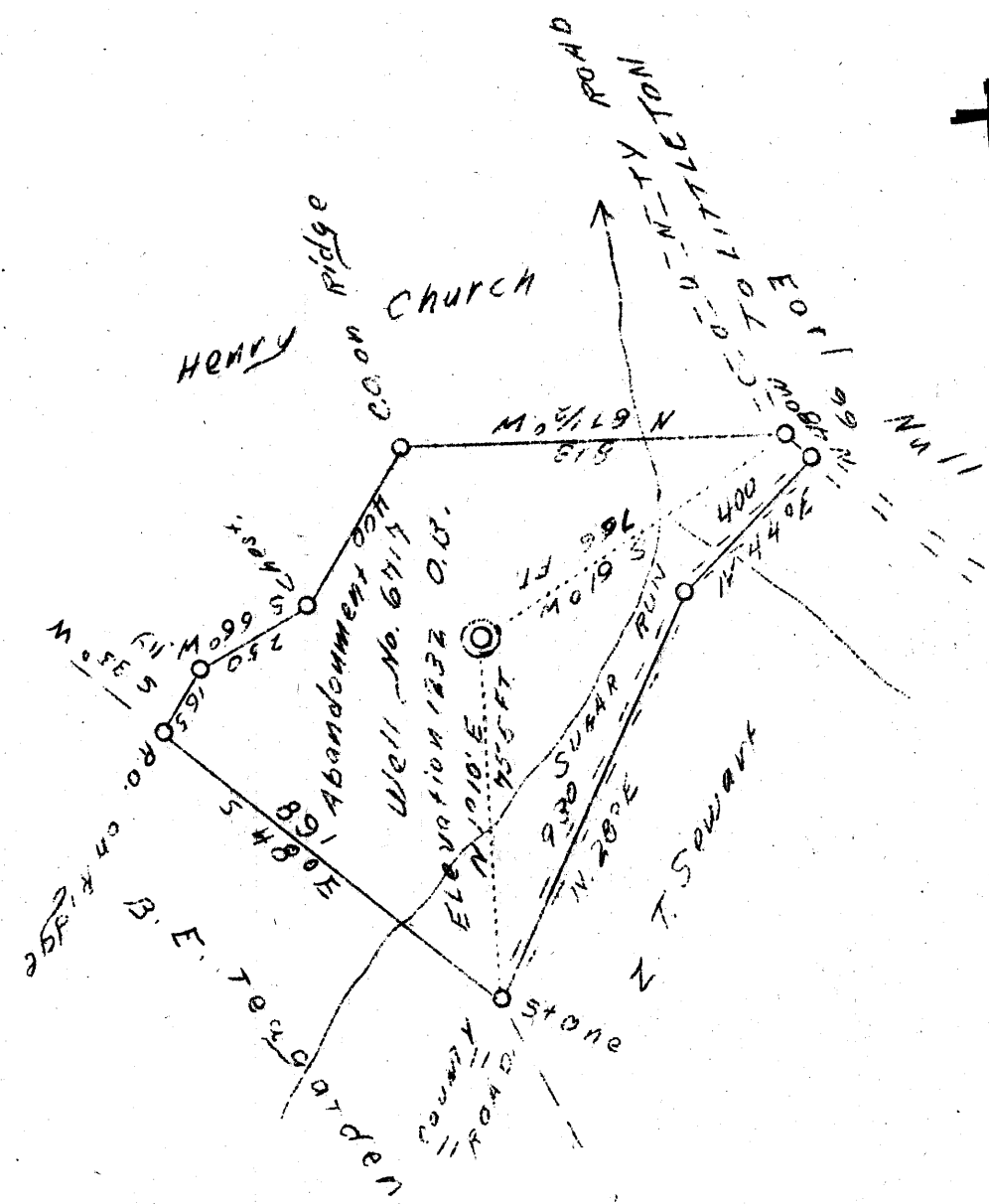


Latitude 39° 40'

Longitude 80° 30'



✓ DEC 20 1938

117 W  
1162 Q

Company	H.E. Milliken & A.M. Snider
Address	Garrison, Pa.
Farm	Lucy L. Stewart
Tract	1
Acres	20
Well No.	6717 ABD.
Quadrangle	Littleton, N.E.C.
County	Wetzel
District	Center
Eng.	David Need
Reg. No.	233-16-5767
Date	12/8/38
Scale	1" = 400'

EC

STATE OF WEST VIRGINIA  
 Department of Mines  
 OIL AND GAS DIVISION  
 Charleston

WELL LOCATION MAP

File No. Wet-284-A

STATE OF WEST VIRGINIA  
DEPARTMENT OF MINES  
OIL AND GAS DIVISION

759

WELL RECORD

Permit No. AP-284-A

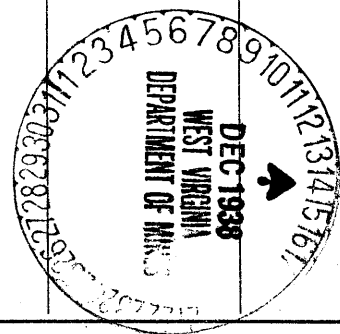
Oil or Gas Well Gas  
(Kind)

Company H. E. Milliken & A. M. Snider  
Address Garrison, Pa.  
Farm Lucy L. Stewart Acres 20  
Location (waters) Sugar Run  
Well No. 6717 Elev. 1232  
District Center County Wetzel  
The surface of tract is owned in fee by Lucy Stewart  
Address Littleton, W. Va.  
Mineral rights are owned by do.  
Address \_\_\_\_\_  
Drilling commenced 10-6-1925  
Drilling completed 12-2-1925  
Date shot 12-4-1925 Depth of shot 3052-3062  
Open Flow /10ths Water in \_\_\_\_\_ Inch  
/10ths Merc. in \_\_\_\_\_ Inch  
Volume \_\_\_\_\_ Cu. Ft.  
Rock Pressure \_\_\_\_\_ lbs. \_\_\_\_\_ hrs.  
Oil \_\_\_\_\_ bbls., 1st 24 hrs.  
Fresh water None recorded feet \_\_\_\_\_ feet  
Salt water 1930 feet \_\_\_\_\_ feet

Casing and Tubing	Used in Drilling	Left in Well	Packers
Size			
16			Kind of Packer
13			
10	285	Pulled	Size of
8 1/4	1466	Pulled	
6 5/8	2171	2171	Depth set
5 3/16	2919	2919	
3			Perf. top
2	3215	3215	Perf. bottom
Liners Used			Perf. top
4 x 4 1/2	267	267	Perf. bottom

CASING CEMENTED \_\_\_\_\_ SIZE \_\_\_\_\_ No. FT. \_\_\_\_\_ Date \_\_\_\_\_  
Not cemented  
COAL WAS ENCOUNTERED AT 865 FEET 60 INCHES  
970 FEET 84 INCHES FEET INCHES  
FEET INCHES FEET INCHES

Formation	Color	Hard or Soft	Top	Bottom	Oil Gas or Water	Depth Found	Remarks
Native Coal			865	870			
Pittsburgh Coal			970	977			
Little Dunkard Sand			1360	1410			
Big Dunkard Sand			1460	1515			
Gas Sand			1640	1685			
First Salt Sand			1760	1815			
Second Salt Sand			1900	1975	Small Gas water	1908 1930	
Little Lime			2145	2155			
Pencil Cave			2155	2160			
Big Lime			2160	2209			
Big Injun Sand			2209	2445	Gas	2266	
Fifty Foot Sand		(Shells)	2919				
Gordon Stray Sand			3019	3027			
Gordon Sand			3029	3063	Oil	3058-3062	
Fourth Sand			3096	3113	Oil	3097	
Fifth Sand			3184	3189			
Total Depth			3216				



Formation	Color	Hard or Soft	Top	Bottom	Oil, Gas or Water	Depth Found	Remarks

Date.....**December 13,**....., 19..**39**

APPROVED **H. E. Milliken & A. M. Snider**....., Owner

By *A M Snider*  
(Title)