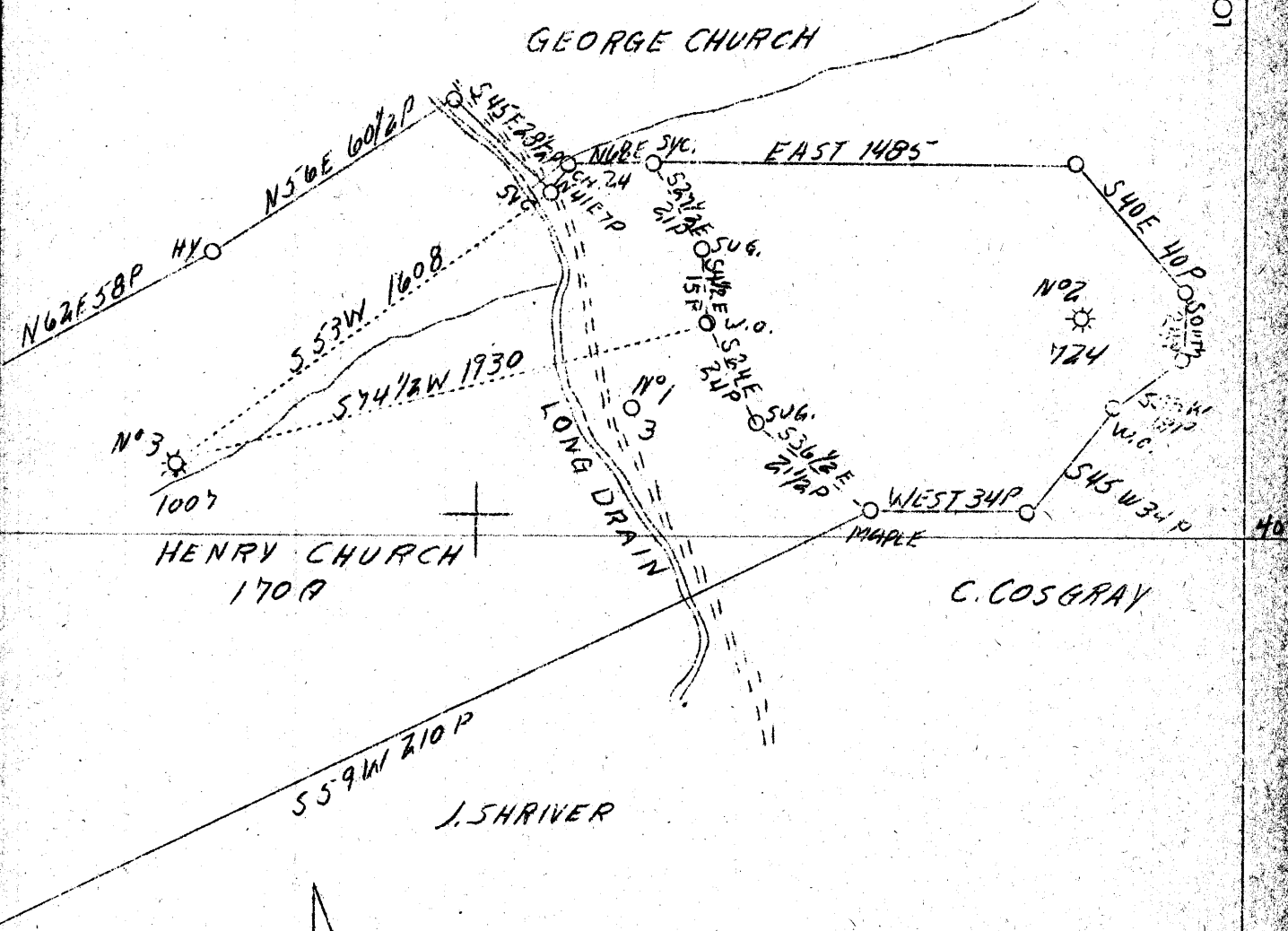


LATITUDE 39° 45'

LONGITUDE 80° 20'

GEORGE CHURCH



4140 W

5.6 5.7 A

HBD.

OCT - 31 1939

Company	Carnegie Natural Gas Co.
Address	Pittsburgh, Pa. (Frick Bldg.)
Farm	Henry Church
Tract	1
Acres	170
Lease No.	E-2888-73
Well (Farm) No.	3
Serial No.	E-1007
Elevation (SL)	1040
Quadrangle	Mannington N. W. 1/4
County	Wetzel
District	Clay
Engineer	Glen H. Huey
Eng. Reg. No.	-
Date	Feb. 8, 1939
Scale	1" - 600

NW

STATE OF WEST VIRGINIA  
 Department of Mines  
 OIL & GAS DIVISION  
 Charleston

WELL LOCATION MAP

File No. Wet-294-A

x Denotes location of well on U. S. Topographic Maps, scale 1 to 62,500, latitude and longitude lines being represented by border lines as shown.

- Denotes one inch spaces on border line of original tracing.

WEST VIRGINIA DEPARTMENT OF MINES  
OIL AND GAS DIVISION

764

WELL RECORD

WELL TO BE ABANDONED

Oil or Gas Well Gas  
(Kind)

Permit No. 794-A

Company Carnegie Natural Gas Company  
 Address 1014 Frick Bldg., Pittsburgh, Penna.  
 Farm Henry Church Acres 170  
 Location (waters) Long Drain  
 Well No. 3-1007 Elev. 1040  
 District Clay County Wetzel  
 The surface of tract is owned in fee by Geo. Church  
Box 61 Address Littleton W Va  
 Mineral rights are owned by See below  
 Address \_\_\_\_\_  
 Drilling commenced Aug 2 1920  
 Drilling completed Oct 5 1920  
 Date shot \_\_\_\_\_ Depth of shot \_\_\_\_\_  
 Open Flow 21 /10ths Water in 2 Inch  
 \_\_\_\_\_ /10ths Merc. in \_\_\_\_\_ Inch  
 Volume \_\_\_\_\_ 215,000 Cu. Ft.  
 Rock Pressure \_\_\_\_\_ 55 lbs. \_\_\_\_\_ hrs.  
 Oil \_\_\_\_\_ bbls., 1st 24 hrs.  
 Fresh water \_\_\_\_\_ feet \_\_\_\_\_ feet  
 Salt water \_\_\_\_\_ feet \_\_\_\_\_ feet

Casing and Tubing	Used in Drilling	Left in Well	Packers
Size			
16			Kind of Packer
13			
10			Size of
8 1/4		1264	
6 5/8		2014	Depth set
5 3/16			
3			Perf. top
2		2345	Perf. bottom
Liners Used			Perf. top
			Perf. bottom

CASING CEMENTED \_\_\_\_\_ SIZE \_\_\_\_\_ No. FT. \_\_\_\_\_ Date \_\_\_\_\_  
 COAL WAS ENCOUNTERED AT 720 FEET \_\_\_\_\_ INCHES  
823 FEET \_\_\_\_\_ INCHES FEET \_\_\_\_\_ INCHES  
 \_\_\_\_\_ FEET \_\_\_\_\_ INCHES FEET \_\_\_\_\_ INCHES

Formation	Color	Hard or Soft	Top	Bottom	Oil Gas or Water	Depth Found	Remarks
Mapletown Coal			720	725			
Pittsburgh Coal			823	829			
Little Dunkard			1190	1205			
Big Dunkard			1350	1385			
Gas Sand			1625	1635			
1st Salt Sand			1765	1817	Gas	1801-1805	
Big Lime			1984	2050			
Big Injun			2050	2300	Gas	2054 2068-83 2172	
Total Depth				2345			
Mineral Rights owned by:-							
Geo. Church		Box 61 Littleton W Va					
Clarence Cosgray		Glover Gap W Va					
A B Cosgray		Glover Gap W Va					
J B Church		Star Route #2 Box 15 Burton W Va					



