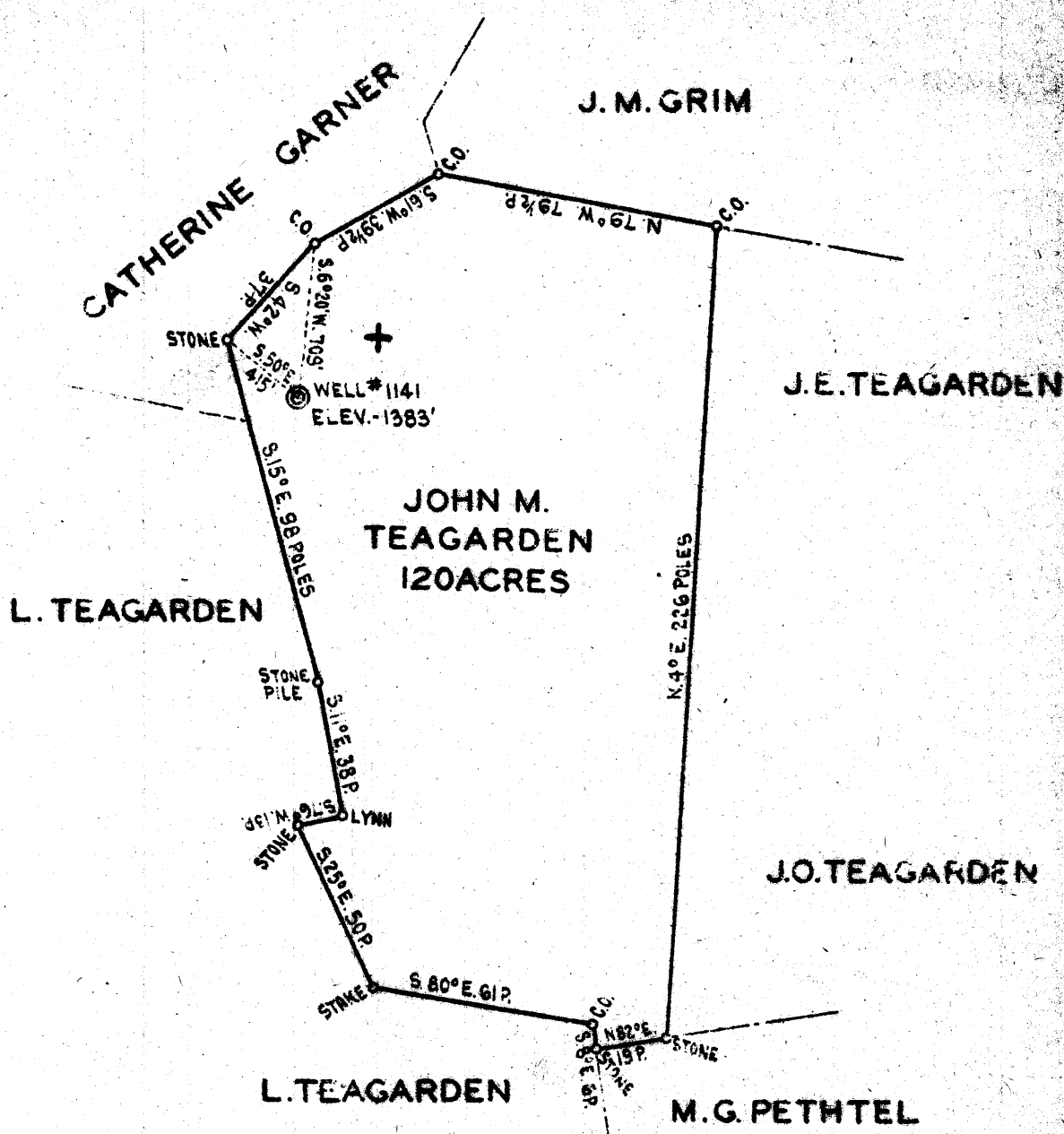


80° 29'



B.E. TEAGARDEN - ADMR. OF
 J.M. TEAGARDEN ESTATE - LITTLETON W. VA
 - OWNS COAL -

New Location...
 Drill Deeper...
 Abandonment...

✓ JAN 23 1940

4.38 ~~4.47~~ W
 2.62 ~~2.67~~ R

Company **THE MANUFACTURERS LIGHT & HEAT CO.**
 Address **800-UNION TRUST BLDG. - PITTSBURGH PA.**
 Farm **JOHN M. TEAGARDEN**
 Tract Acres **120** Lease No. **2978**
 Well (Farm) No. **(1)** Serial No. **1141**
 Elevation (Spirit Level) **1383'**
 Quadrangle **MANNINGTON - N.W. 1/4**
 County **WETZEL** District **CHURCH**
 Engineer **Thomas E. Virgin**
 Engineer's Registration No. _____
 Date No. **JANUARY 11, 1940** Drawing No. **V-8-534**
 Scale **1" = 800'**

STATE OF WEST VIRGINIA
 DEPARTMENT OF MINES
 OIL AND GAS DIVISION
 CHARLESTON
WELL LOCATION MAP
 File No. **WET-316A**

+ Denotes location of well on United States Topographic Maps, scale 1 to 62,500, latitude and longitude lines being represented by border lines as shown.
 - Denotes one inch spaces on border lines of original tracings.

STATE OF WEST VIRGINIA
DEPARTMENT OF MINES
OIL AND GAS DIVISION

792

Act 316 A

WELL RECORD

Permit No. Drilled in 1905

Oil or Gas Well Gas
(Kind)

Company The Mfrs. Light & Heat Co.
Address 800 Union Trust Bldg., Pittsburgh, Pa.
Farm John Teagarden Acres 120
Location (waters) _____
Well No. 1 - 1111 Elev. 1383'
District Church County Wetzel
The surface of tract is owned in fee by J M Teagarden Estate
c/o B E Teagarden Address Littleton, WVa.
Mineral rights are owned by The Mfrs. Light & Heat Co
800 Union Trust Bldg. Address Pittsburgh, Pa.
Drilling commenced Oct. 3, 1905
Drilling completed Dec. 8, 1905
Date shot _____ Depth of shot _____
Open Flow /10ths Water in _____ Inch
/10ths Merc. in _____ Inch
Volume _____ Cu. Ft.
Rock Pressure 680 lbs _____ hrs.
Oil _____ bbls., 1st 24 hrs.
Fresh water _____ feet _____ feet
Salt water _____ feet _____ feet

| Casing and Tubing | Used in Drilling | Left in Well | Packers |
|-------------------|------------------|--------------|-----------------|
| Size | | | |
| 16 | | | Kind of Packer |
| 13 | | | |
| 10 | 170 | | Size of |
| 8 1/4 | 1600 | 1000 | 6 5/8 x 4" |
| 6 5/8 | 2400 | 2400 | Depth set 2450' |
| 5 3/16 | | | |
| 4 1/4 | | 3332 | Perf. top |
| 2 | | | Perf. bottom |
| Liners Used | | | Perf. top |
| | | | Perf. bottom |

CASING CEMENTED _____ SIZE _____ No. FT. _____ Date _____
COAL WAS ENCOUNTERED AT _____ FEET _____ INCHES
_____ FEET _____ INCHES _____ FEET _____ INCHES
_____ FEET _____ INCHES _____ FEET _____ INCHES

| Formation | Color | Hard or Soft | Top | Bottom | Oil Gas or Water | Depth Found | Remarks |
|-----------------|-------|--------------|------|--------|-------------------|-------------|---------|
| Mapletown Coal | | | 1030 | 1034 | | | |
| Pittsburgh Coal | | | 1125 | 1137 | | | |
| Big Dunkard | | | 1625 | 1695 | | | |
| Gas Sand | | | 1740 | 1790 | | | |
| Salt Sand | | | 1865 | 1905 | | | |
| 2nd Salt Sand | | | 1915 | 1985 | Gas at 1925 | | |
| 3rd Salt Sand | | | 2000 | 2090 | | | |
| Maxon Sand | | | 2250 | 2270 | | | |
| Little Lime | | | 2300 | 2315 | | | |
| Pencil Cave | | | 2315 | 2320 | | | |
| Big Lime | | | 2320 | 2395 | | | |
| Big Injun | | | 2395 | 2605 | Gas at 2500 | in Injun | |
| Fifty-Foot Sand | | | 3100 | 3140 | Shelly | | |
| Gordon Stray | | | 3175 | 3195 | | | |
| Gordon Sand | | | 3200 | 3210 | | | |
| 4th Sand | | | 3292 | 3303 | Gas 3295 | | |
| Sand & Shells | | | 3343 | 3350 | | | |
| Total depth | | | | 3354 | Finished in slate | | |

7000 a day well

| Formation | Color | Hard or Soft | Top | Bottom | Oil, Gas or Water | Depth Found | Remarks |
|-----------|-------|--------------|-----|--------|-------------------|-------------|---------|
| | | | | | | | |
| | | | | | | | |
| | | | | | | | |
| | | | | | | | |
| | | | | | | | |
| | | | | | | | |
| | | | | | | | |
| | | | | | | | |
| | | | | | | | |
| | | | | | | | |
| | | | | | | | |
| | | | | | | | |
| | | | | | | | |
| | | | | | | | |
| | | | | | | | |
| | | | | | | | |
| | | | | | | | |
| | | | | | | | |
| | | | | | | | |
| | | | | | | | |
| | | | | | | | |

Date January 15th, 1940

APPROVED THE MANUFACTURERS LIGHT & HEAT CO., Owner

By Harry H. Fowler
Land Dept. (Title) Office Manager