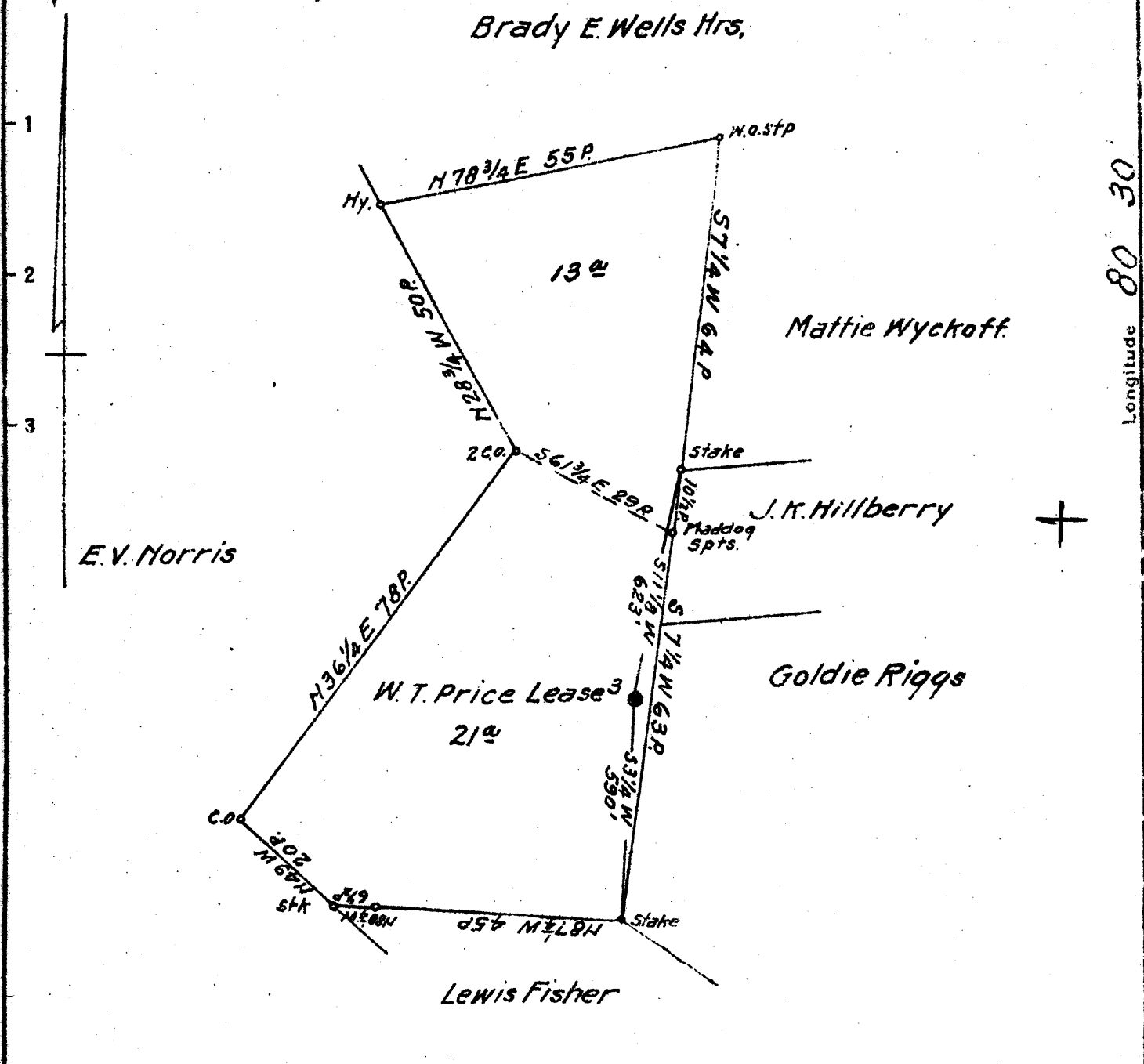


Latitude 39 35'

Brady E. Wells Hrs.

Longitude 80 30'



Coal: State of West Virginia  
 Surface: Louis Fisher  
 R.D.#1, Smithfield, W.Va.

0.53 W

New Location   
 Drill Deeper   
 Abandonment

DEC - 9 1941

3.18 3.18 W

N 6 E 6-7 Map 1159

Company South Penn Natural Gas Co.  
 Address Parkersburg, W.Va.  
 Farm W.T. Price  
 Tract \_\_\_\_\_ Acres 34 Lease No. 15139  
 Well (Farm) No. 3 Serial No. \_\_\_\_\_  
 Elevation (Spirit Level) 1435.94  
 Quadrangle Littleton  
 County Wetzel District Grant  
 Engineer Emmon Haines  
 Engineer's Registration No. \_\_\_\_\_  
 File No. \_\_\_\_\_ Drawing No. \_\_\_\_\_  
 Date Oct. 17, 1941 Scale 1" = 400'

STATE OF WEST VIRGINIA  
 DEPARTMENT OF MINES  
 OIL AND GAS DIVISION  
 CHARLESTON

WELL LOCATION MAP  
 FILE NO. Wet-406A

+ Denotes location of well on United States Topographic Maps, scale 1 to 62,500, latitude and longitude lines being represented by border lines as shown.

- Denotes one inch spaces on border line of original tracing.

54

W. T. PRICE No. 3 - SOUTH PENN NAT. GAS CO. - WET-406-A

STATE OF WEST VIRGINIA  
DEPARTMENT OF MINES  
OIL AND GAS DIVISION

872

WELL RECORD

Permit No. **Y06-A**

Oil or Gas Well (GND)

Company **SOUTH PENN NATURAL GAS COMPANY,**  
Address **Union Trust Bldg. Parkersburg, W. Va.**  
Farm **W. T. Price** Acres **34**  
Location (waters) **Pickenpaw**  
Well No. **3** Elev. **1435.94**  
District **Grant** County **Wetzel**  
The surface of tract is owned in fee by **Louis Fisher**  
**R. D. #1, Smithfield, W. Va.**  
Mineral rights are owned by **W. T. Price**  
**Smithfield, W. Va.**  
Drilling commenced **June 17, 1897**  
Drilling completed **Aug. 10, 1897**  
Date shot **see below** Depth of shot **----**  
Open Flow /10ths Water in **----** Inch  
/10ths Merc. in **----** Inch  
Volume **----** Cu. Ft.  
Rock Pressure **----** lbs. **----** hrs.  
Oil **100** bbls., 1st 24 hrs.  
Fresh water **----** feet **----** feet  
Salt water **----** feet **----** feet

Casing and Tubing	Used in Drilling	Left in Well	Packers
Size			Kind of Packer
16			
13			
10	<b>875'</b>	<b>Pulled</b>	Size of
8 1/4	<b>1742'</b>		
6 5/8	<b>2157'</b>		Depth set
5 3/16	<b>2459'</b>		
3			Perf. top
2			Perf. bottom
Liners Used			Perf. top
			Perf. bottom

CASING CEMENTED **----** SIZE **----** No. Ft. **----** Date **----**  
COAL WAS ENCOUNTERED AT **----** FEET **----** INCHES  
**----** FEET **----** INCHES **----** FEET **----** INCHES  
**----** FEET **----** INCHES **----** FEET **----** INCHES

Formation	Color	Hard or Soft	Top	Bottom	Oil, Gas or Water	Depth Found	Remarks
Pittsburgh Coal			1194	1200			
Little Dunkard			1525	1545			
Big Dunkard			1720	1750			
Gas Sand			2015	2045			
Salt Sand			2090	2240			
Pencil Cave			2435	2438			
Big Lime			2438	2490			
Big Injun			2519'6"				
Total Depth				2606	Oil Oil	2592 2595	
Shot Record:							
	Dec.	20, 1898	12 qts				
	Nov.	24, 1899	20 qts				
	Nov.	14, 1900	20 qts				
	Mar.	28, 1901	30 qts				
	Jan.	2, 1907	60 qts				
	Jan.	1, 1909	120 qts				
	Mar.	13, 1912	60 qts				

