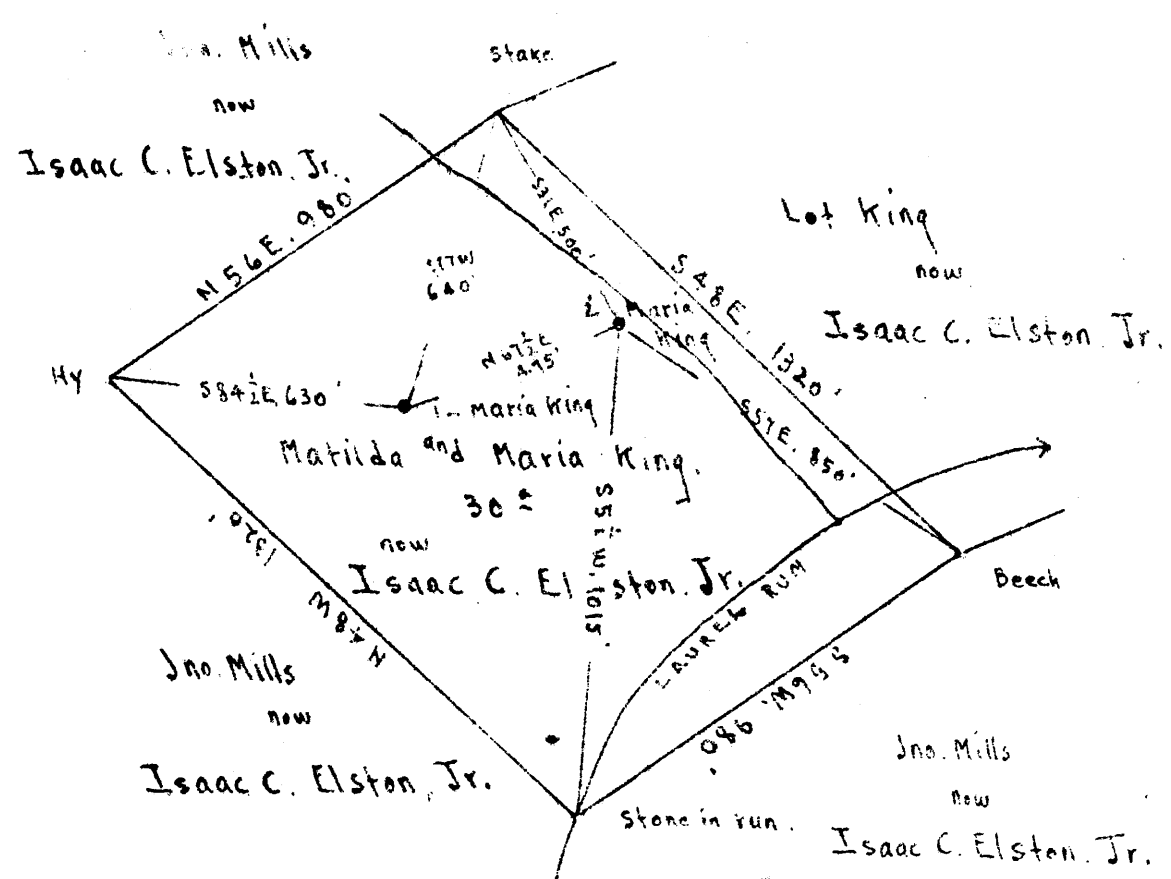


39° 32' 30"

Latitude 39 35

80 35'  
80° 37' 30"

Scale 1" = 400'



Both Pittsburgh Coal & Surface belong to  
 Isaac C. Elston, Jr., Chicago, Ill.

Address: L.N. Dana, Manager, Belpre, Ohio.

#2 2.81 S  
1.63 W  
#1 2.83 S  
1.72 W

found on prop map M14

New Location   
 Drill Deeper   
 Abandonment

✓ OCT 30 1945

#1	4.0 W 3.94
#1	5.99 2.58
#2	3.91 W 3.86
#2	5.9 2.59

Company Raad Supply Co.  
 Address Salem, W. Va.  
 Farm Maria King  
 Tract Acres 30<sup>±</sup> Lease No. 123456  
 Well (Farm) No. 1<sup>and</sup> 2 Serial No. 123456  
 Elevation (Spirit Level) 42 Ground 12.31  
 Quadrangle Littleton  
 County Wetzel District Grant  
 Engineer EC Tabler  
 Engineer's Registration No. \_\_\_\_\_  
 File No. \_\_\_\_\_ Drawing No. \_\_\_\_\_  
 Date Aug. 15<sup>th</sup> 1945 Scale 1" = 400'

STATE OF WEST VIRGINIA  
 DEPARTMENT OF MINES  
 OIL AND GAS DIVISION  
 CHARLESTON

**WELL LOCATION MAP**  
 FILE NO. WEI-506-A #2  
WEI-510-A #1

+ Denotes location of well on United States Topographic Maps, scale 1 to 62,500. latitude and longitude lines being represented by border lines as shown.

○ Denotes one inch spaces on border line of original tracing.

*Handwritten notes:* 39000', 50, Pine Grove 7 1/2'



971

STATE OF WEST VIRGINIA  
DEPARTMENT OF MINES  
OIL AND GAS DIVISION

WELL RECORD

Permit No. ~~506A~~

Oil or Gas Well Oil  
(KIND)

Company Raad Supply Company  
Address 184 E. Main St., Salem, W. Va.  
Farm Maria King Acres 30  
Location (waters) Laurel Run  
Well No. 2 Elev. 1031.71  
District Grant County Wetzel  
The surface of tract is owned in fee by Isaac C. Elston, Jr  
Chicago, Ill. Address L. N. Dana, Mng.  
Mineral rights are owned by Belpre, Ohio  
Same as surface owner.

Casing and Tubing	Used in Drilling	Left in Well	Packers
Size			
16			Kind of Packer
13			
	<b>422'</b>	<b>422'</b>	Size of
8 1/4	<b>1325'</b>	<b>1325'</b>	
6 5/8	<b>2046'</b>	<b>2046'</b>	Depth set
5 3/16			
3			Perf. top
2	<b>2128'</b>	<b>2128'</b>	Perf. bottom
Liners Used			Perf. top
			Perf. bottom

Drilling commenced \_\_\_\_\_  
Drilling completed April 22, 1900  
Date Shot 12/9/04 From 2112' To \_\_\_\_\_  
With 3/20/13 2112'  
7/11/22 2110' - 2120'  
Open Flow \_\_\_\_\_ /10ths Water in \_\_\_\_\_ Inch  
\_\_\_\_\_ /10ths Merc. in \_\_\_\_\_ Inch  
Volume \_\_\_\_\_ Cu. Ft.  
Rock Pressure \_\_\_\_\_ lbs. \_\_\_\_\_ hrs.  
Oil \_\_\_\_\_ bbls., 1st 24 hrs.  
Fresh water \_\_\_\_\_ feet \_\_\_\_\_ feet  
Salt water \_\_\_\_\_ feet \_\_\_\_\_ feet

CASING CEMENTED No SIZE \_\_\_\_\_ No. Ft. \_\_\_\_\_ Date \_\_\_\_\_  
COAL WAS ENCOUNTERED AT 791 FEET \_\_\_\_\_ INCHES  
\_\_\_\_\_ FEET \_\_\_\_\_ INCHES FEET \_\_\_\_\_ INCHES  
\_\_\_\_\_ FEET \_\_\_\_\_ INCHES FEET \_\_\_\_\_ INCHES

Formation	Color	Hard or Soft	Top	Bottom	Oil, Gas or Water	Depth Found	Remarks
<b>Pittsburgh Coal</b>			<b>791'</b>				
<b>Big Injun Sand</b>			<b>2094</b>				
<b>1st Pay Oil</b>			<b>2112</b>	<b>2125</b>	<b>Oil</b>		
<b>Total Depth</b>				<b>2128</b>			

