

39°37'30"

Latitude

80°45'00"

Longitude

+ 1.955
.74w

Topo Location

7.5' Loc. _____ 15' Loc. _____
_____ (calc.) _____

Company Little Creek Oil Co

Farm CS Headlee

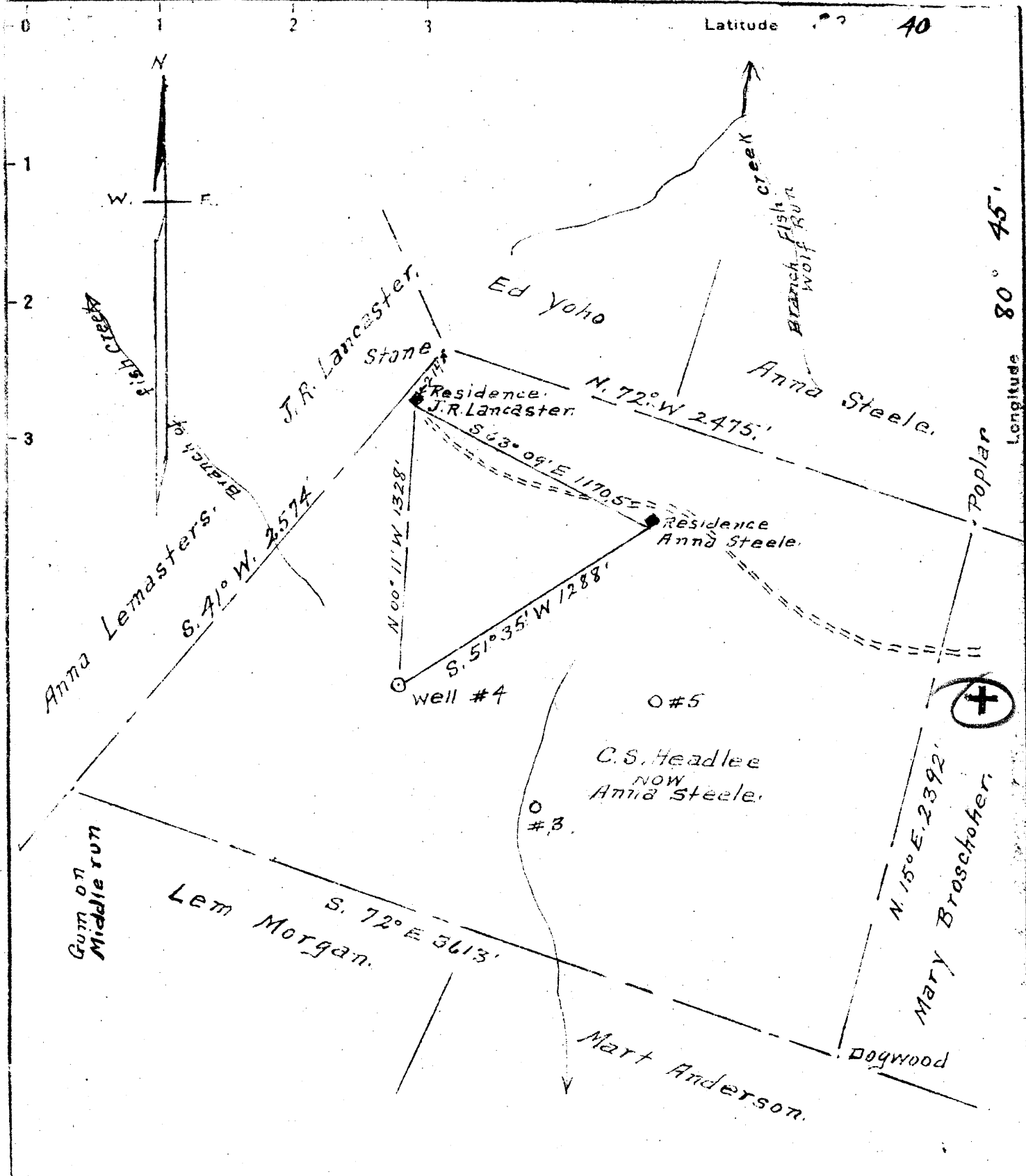
15' Quad _____
(sec.)

7.5' Quad Porters Falls

District GREEN

WELL LOCATION PLAT

County 103 Permit 30561



New Location
 Drill Deeper
 Abandonment

✓ APR 28 1947 5108 JH18

Company Little Creek Oil Co
 Address Hundred, W. Va.
 Farm C.S. Headlee
 Tract one Acres 167 Lease No. _____
 Well (Farm) No. 4 Serial No. _____
 Elevation (Spirit Level) 1125'
 Quadrangle New Martinsville
 County Wetzel District Green
 Engineer A. L. Headley
 Engineer's Registration No. _____
 File No. _____ Drawing No. _____
 Date 4-8-1947 Scale 600 ft = 1 inch

STATE OF WEST VIRGINIA
 DEPARTMENT OF MINES
 OIL AND GAS DIVISION
 CHARLESTON

WELL LOCATION MAP
 FILE NO. WET-561-A

+ Denotes location of well on United States Topographic Maps, scale 1 to 62,500, latitude and longitude lines being represented by border lines as shown.
 - Denotes one inch spaces on border line of original tracing.

EC

O. S. Headley No. 4 Well Record (117-S)(263H)

Green District, Wetzel County, W. Va.; on a branch of Fishing Creek 1.3 miles northeast of Porters Falls; completed March 10, 1918; authority, Silverhill Oil Company; elevation, 1197' (from Silverhill map).

| | Top. Feet. | Bottom. Feet. |
|--|---------------|------------------|
| Coal, <u>Waynesburg "A"</u> | 570 | 575 |
| Slate | 575 | 629 |
| Coal, <u>Waynesburg</u> | 629 | 634 |
| Shells and slate | 634 | 650 |
| Red rock | 650 | 690 |
| Slate | 690 | 720 |
| Red rock | 720 | 730 |
| Slate | 730 | 780 |
| Shells and slate | 780 | 850 |
| Lime | 850 | 885 |
| Shells and slate | 885 | 910 |
| Coal, <u>Sewickley</u> | 910 | 914 |
| Shells | 914 | 980 |
| Lime | 980 | 1004 |
| Slate, dark, <u>Pittsburgh Coal horizon</u> | 1004 | 1015 |
| Shells and slate | 1015 | 1035 |
| Sand, white, <u>Minchall, Connellsville</u> | 1035 | 1065 |
| Red rock | 1065 | 1085 |
| Slate and shells | 1085 | 1180 |
| Slate | 1180 | 1285 |
| Sand, <u>Grafton</u> | 1285 | 1309 |
| Slate | 1309 | 1320 |
| Red rock | 1320 | 1365 |
| Slate | 1365 | 1370 |
| Lime and shells | 1370 | 1400 |
| Coal, <u>Bakerstown</u> | 1400 | 1405 |
| Shells and slate | 1405 | 1475 |
| Lime | 1475 | 1500 |
| Slate | 1500 | 1570 |
| Sand, <u>Burning Springs, Upper Freeport</u> | 1570 | 1580 |
| Slate | 1580 | 1660 |
| Gas Sand, <u>Lower Freeport</u> | 1660 | 1705 |
| Slate | 1705 | 1843 |
| Sand, Salt, <u>Upper Connocrossing</u> | 1843 | 1915 |
| Shells and slate | 1915 | 1960 |
| Slate, dark | 1960 | 2030 |
| Shells | 2030 | 2060 |
| Slate | 2060 | 2120 |
| Sand, dark, <u>Maxton</u> | 2135 | 2150 |
| Sand, white, <u>Maxton (continued)</u> | 2150 | 2163 |
| <u>Big Lime</u> | 2163 | 2224 |

561-A

| | Top. Feet. | Bottom. Feet |
|---|---------------|-----------------|
| Sand, <u>Big Injun</u> (oil, first pay, 2302-2310'; shot with 20 qts. from 2302-2310' and did not help much, possibly making 2 bbis. a day from this pay) | 2324 | 2425 |
| Slate and shells | 2425 | 2870 |
| Red rock | 2870 | 2915 |
| Reduced hole to 5" at | 2939 | -- |
| Liner set from (1st section 423' 5" (2nd section 310' 11").... | 2255 | 2939 |
| Slate and shells | 2915 | 2985 |
| Sand, <u>Gordon Stray</u> | 2985 | 3005 |
| Slate, dark | 3005 | 3020 |
| Sand, <u>Gordon</u> (first oil and gas, 3028-3033') | 3020 | 3036 |
| Slate, dark, very hard | 3033 | 3044 |

10" casing - put in well, 398', and pulled out.
 8" casing - put in well, 1453', and left in.
 6 5/8" casing - put in well, 2163' and left in.
 6 3/16" casing - used as liner, put in well 734' 4" put in well in two sections as given above.

Shot with 20 qts. Mar. 15/18 from 3025' to 3033', (size of shell 4 1/2" x 7' 8"). Hole filled up 2000' in 24 hours after shot. Started cleaning out Mar. 13/18, after shot. Liner comes up to 2255' or 45' 4" above shot hole in Big Injun.

Big Injun oil, 2 bbl.; Gordon oil, 20 bbl.