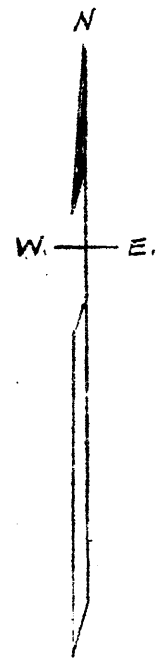
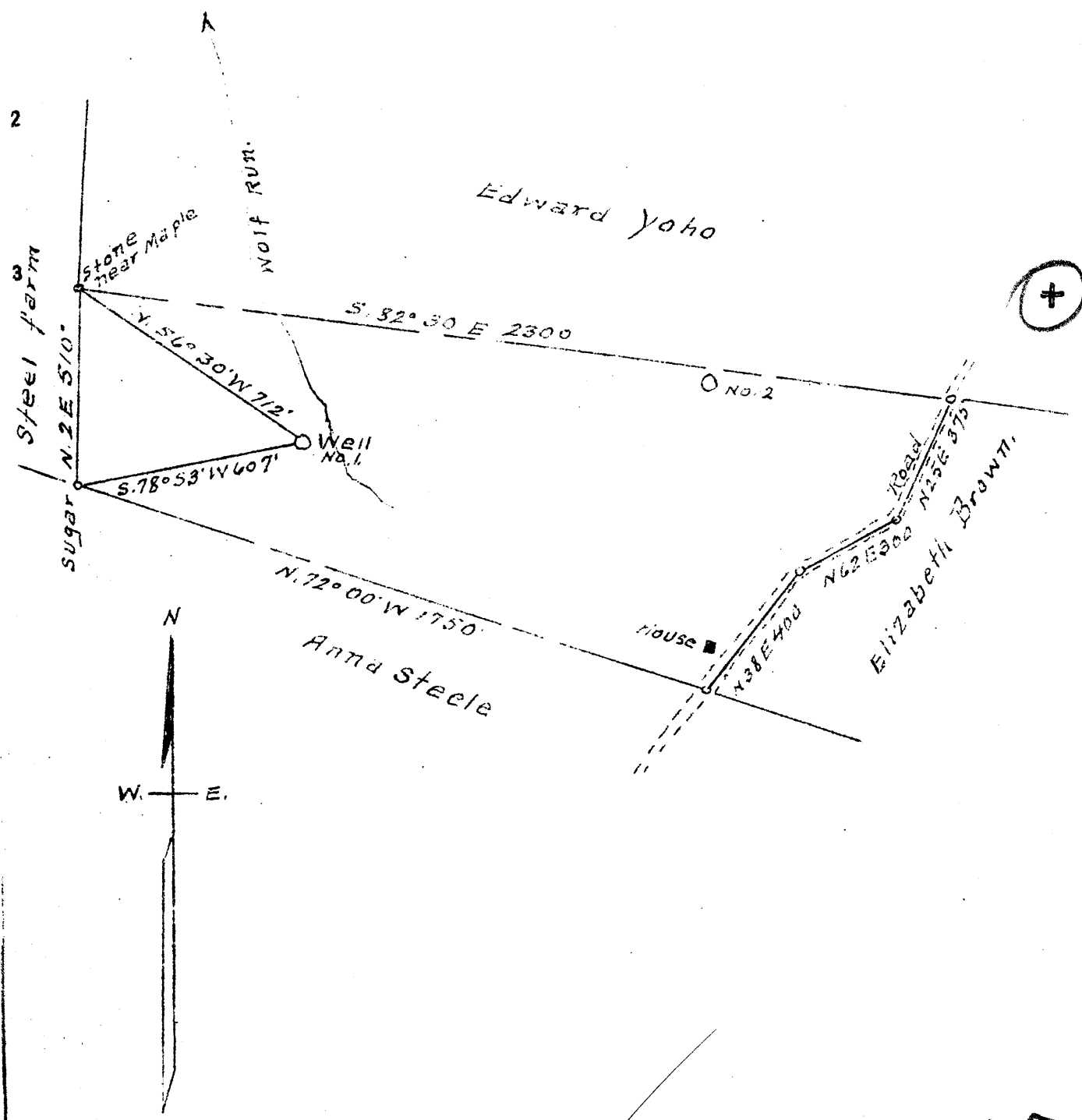


Latitude  $37^{\circ} 40'$

Longitude  $80^{\circ} 45'$



0.54 0.57 W  
 3.42 3.48 Q

New Location  
 Drill Deeper  
 Abandonment X

MAY 26 1947

Company Little Creek Oil Co.  
 Address Hundred W. Va.  
 Farm F. M. Steele  
 Tract ONE Acres 35+ Lease No. \_\_\_\_\_  
 Well (Farm) No. ONE Serial No. \_\_\_\_\_  
 Elevation (Spirit Level) 980  
 Quadrangle New Martinsville  
 County Wetzel District Magnolia  
 Engineer A. L. Headley  
 Engineer's Registration No. \_\_\_\_\_  
 File No. \_\_\_\_\_ Drawing No. \_\_\_\_\_  
 Date 4-27-47 Scale 1 inch = 400'

STATE OF WEST VIRGINIA  
 DEPARTMENT OF MINES  
 OIL AND GAS DIVISION  
 CHARLESTON

WELL LOCATION MAP  
 FILE NO. Wet-571-A

+ Denotes location of well on United States Topographic Maps, scale 1 to 62,500, latitude and longitude lines being represented by border lines as shown.  
 - Denotes one inch spaces on border line of original tracing

F, M, STEELE NO. 1 - LITTLE CREEK OIL CO. - WET-571-A