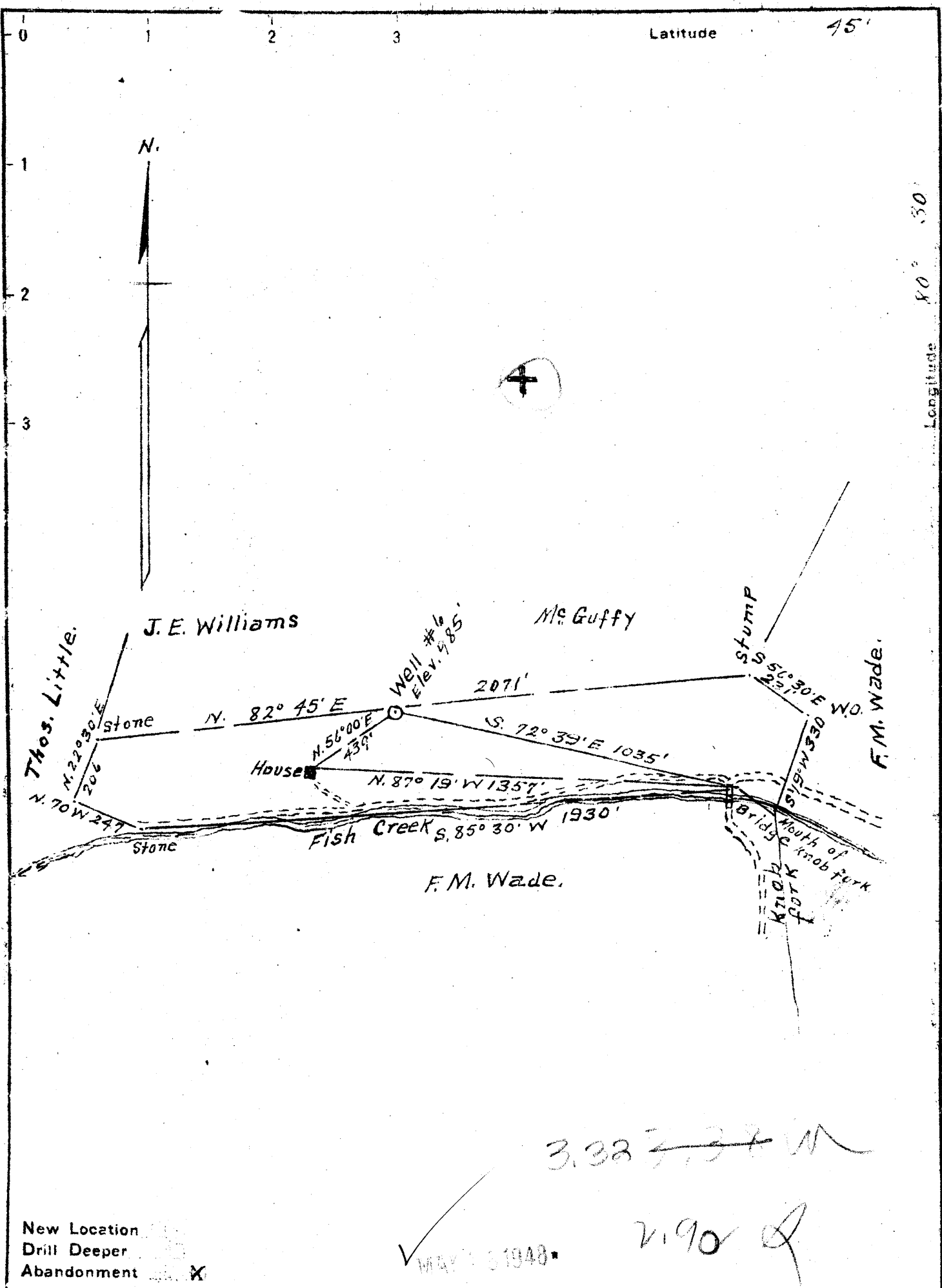


Latitude

45'

Longitude 80° 30'



3.38 ~~7.37~~ W  
 2190 A  
 MAY 15 1948

New Location   
 Drill Deeper   
 Abandonment

Company Little Creek Oil Co.  
 Address Hundred, W. Va.  
 Farm W. B. Peterson  
 Tract No 2 Acres 15 Lease No. \_\_\_\_\_  
 Well (Farm) No. 6 Serial No. \_\_\_\_\_  
 Elevation (Spirit Level) 985'  
 Quadrangle Littleton  
 County Wetzel District Clay  
 Engineer A. L. Headley  
 Engineer's Registration No. \_\_\_\_\_  
 File No. \_\_\_\_\_ Drawing No. \_\_\_\_\_  
 Date 6-9-1947 Scale 1 inch = 400'

STATE OF WEST VIRGINIA  
 DEPARTMENT OF MINES  
 OIL AND GAS DIVISION  
 CHARLESTON

WELL LOCATION MAP  
 FILE NO. WET-662-A

+ Denotes location of well on United States Topographic Maps, scale 1 to 62,500, latitude and longitude lines being represented by border lines as shown.

- Denotes one inch spaces on border line of original tracing



STATE OF WEST VIRGINIA  
DEPARTMENT OF MINES  
OIL AND GAS DIVISION

1101

WELL RECORD

Permit No. \_\_\_\_\_

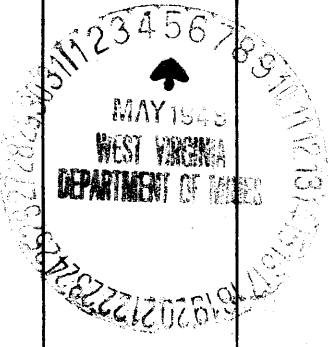
Oil or Gas Well \_\_\_\_\_  
(KIND)

Company Little Creek Oil Co., A. M. Snider Opr.  
 Address Hundred, West Virginia  
 Farm W. B. Peterson Acres 15  
 Location (waters) Fish Creek  
 Well No. Six (6) Elev 285'  
 District Clay County Netral  
 The surface of tract is owned in fee by \_\_\_\_\_  
 Address \_\_\_\_\_  
 Mineral rights are owned by \_\_\_\_\_  
 Address \_\_\_\_\_  
 Drilling commenced No Record  
 Drilling completed \_\_\_\_\_  
 Date Shot \_\_\_\_\_ From \_\_\_\_\_ To \_\_\_\_\_  
 With \_\_\_\_\_  
 Open Flow \_\_\_\_\_ /10ths Water in \_\_\_\_\_ Inch  
 \_\_\_\_\_ /10ths Merc. in \_\_\_\_\_ Inch  
 Volume \_\_\_\_\_ Cu. Ft.  
 Rock Pressure No Record lbs. \_\_\_\_\_ hrs.  
 Oil No Record bbls., 1st 24 hrs.  
 Fresh water \_\_\_\_\_ feet \_\_\_\_\_ feet  
 Salt water \_\_\_\_\_ feet \_\_\_\_\_ feet

Casing and Tubing	Used in Drilling	Left in Well	Packers
Size			
16			Kind of Packer
13			
10			Size of
8 3/4	1114	1114	
6 3/8	2018	2018	Depth set
5 3/16			
3			Perf. top
2			Perf. bottom
Liners Used	5"	610	Perf. top
			Perf. bottom

CASING CEMENTED \_\_\_\_\_ SIZE \_\_\_\_\_ No. Ft. \_\_\_\_\_ Date \_\_\_\_\_  
 COAL WAS ENCOUNTERED AT 835 FEET 84 INCHES  
 \_\_\_\_\_ FEET \_\_\_\_\_ INCHES FEET \_\_\_\_\_ INCHES  
 \_\_\_\_\_ FEET \_\_\_\_\_ INCHES FEET \_\_\_\_\_ INCHES

Formation	Color	Hard or Soft	Top	Bottom	Oil, Gas or Water	Depth Found	Remarks
Pittsburgh Coal			835	842			
Big Dunkard Sand			1310	1360	Gas	1560-1580	
First Salt Sand			1590	1610			
Second Salt Sand			1620	1660	Gas	1625	
Little Line			1985	1992			
Pencil Cave			1992	1996			
Big Line			1996	2054			
Big Injun Sand			2054	2315			
Gordon Stray Sand			2860	2878			
Gordon Sand			2895	2912	Oil	2906	
Total Depth				2912			



23 1948