

39°30'00"

Latitude

+.265  
2.16w

Longitude

80°32'30"

Topo Location

7.5' Loc. \_\_\_\_\_ 15' Loc. \_\_\_\_\_  
\_\_\_\_\_  
(calc.) \_\_\_\_\_

Company Interstate Pipe & Supply Co

Farm ISAAC Hoge #18

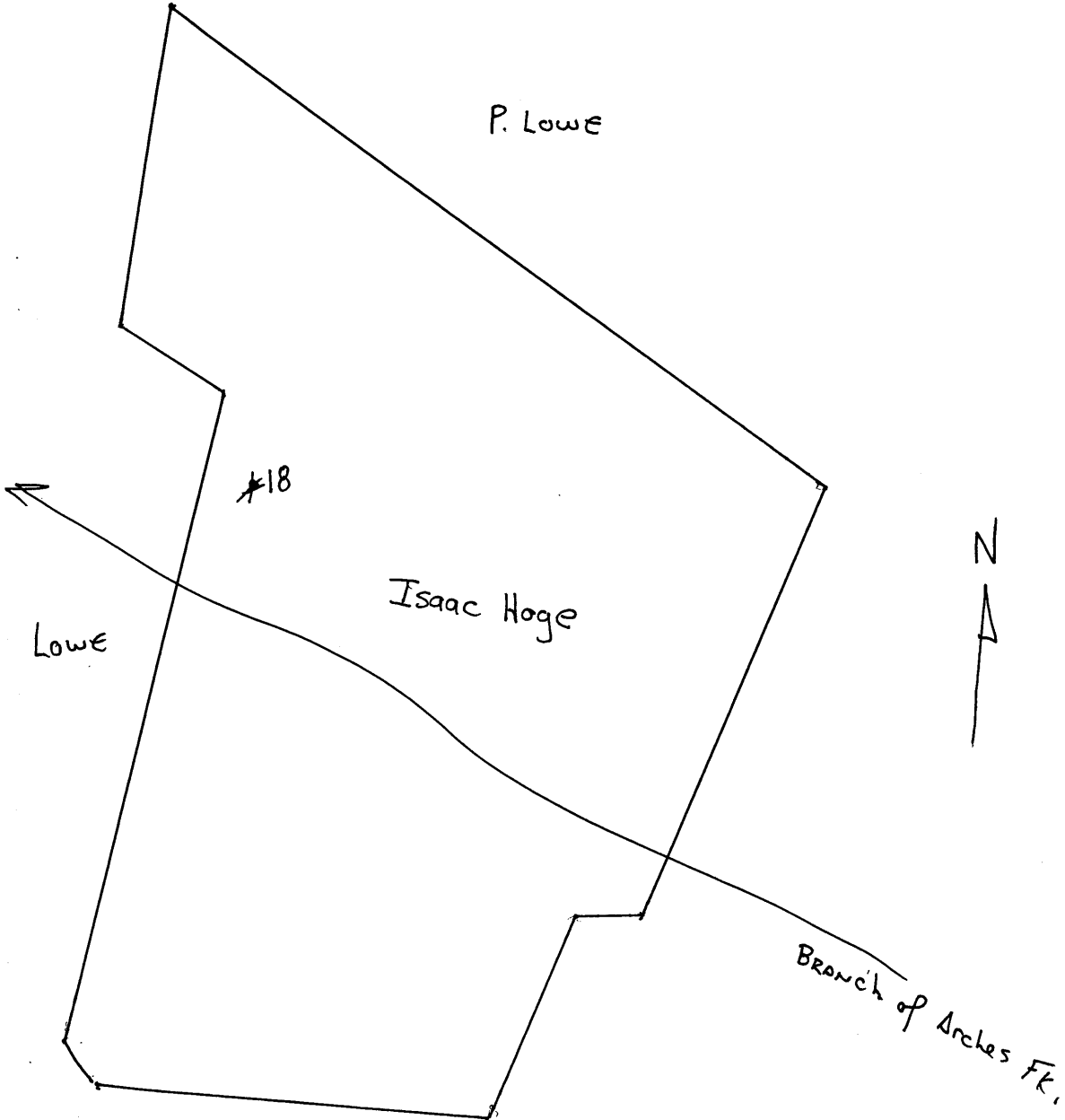
15' Quad \_\_\_\_\_  
(sec.)

7.5' Quad Folsom

District GRANT

WELL LOCATION PLAT

County 103 Permit 30709





1195

STATE OF WEST VIRGINIA  
DEPARTMENT OF MINES  
OIL AND GAS DIVISION

WELL RECORD

Permit No. 709 A Oil or Gas Well \_\_\_\_\_ (KIND)

Company The Interstate Pipe & Supply Company  
 Address P. O. Box 611, Marietta, Ohio  
 Farm Issac Hoge Acres 400  
 Location (waters) Poplar  
 Well No. 18 Elev. 987.58  
 District Grant County Wetzel  
 The surface of tract is owned in fee by Mrs. Dosis B. Lemasters Address Smithfield, W. Va.  
 Mineral rights are owned by Mrs. Mary Walker Address Frankfort, Ky.  
 Drilling commenced March 7, 1912  
 Drilling completed March 31, 1912  
 Date Shot 1912 From \_\_\_\_\_ To 2877  
 With \_\_\_\_\_  
 Open Flow \_\_\_\_\_ /10ths Water in \_\_\_\_\_ Inch  
 \_\_\_\_\_ /10ths Merc. in \_\_\_\_\_ Inch  
 Volume \_\_\_\_\_ Cu. Ft.  
 Rock Pressure \_\_\_\_\_ lbs. \_\_\_\_\_ hrs.  
 Oil \_\_\_\_\_ bbls., 1st 24 hrs.  
 Fresh water \_\_\_\_\_ feet \_\_\_\_\_ feet  
 Salt water \_\_\_\_\_ feet \_\_\_\_\_ feet

Casing and Tubing	Used in Drilling	Left in Well	Packers
Size			
16			Kind of Packer
13			
10	254	26' 3"	Size of
8 1/4	1253' 5"	None	
6 1/2	2031' 9"	2031' 9"	Depth set
5 3/16	2397' 9"	2397' 9"	
3			Perf. top
2			Perf. bottom
Liners Used			Perf. top
			Perf. bottom

CASING CEMENTED \_\_\_\_\_ SIZE \_\_\_\_\_ No. Ft. \_\_\_\_\_ Date \_\_\_\_\_

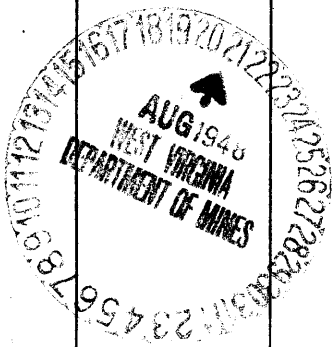
COAL WAS ENCOUNTERED AT 753 FEET 60 INCHES

\_\_\_\_\_ FEET \_\_\_\_\_ INCHES \_\_\_\_\_ FEET \_\_\_\_\_ INCHES

\_\_\_\_\_ FEET \_\_\_\_\_ INCHES \_\_\_\_\_ FEET \_\_\_\_\_ INCHES

Formation	Color	Hard or Soft	Top	Bottom	Oil, Gas or Water	Depth Found	Remarks
Conductor				16			
Pittsburgh Coal			753	758			
Big Dunkard			1250	1270			
Little Dunkard			1185	1235			
Salt Sand			1742	1802			
Maxon Sand			1884	1914			
Big Lime			1996	2056			
Pencil Cave			1986	<del>2056</del>	1996		
Big Injun			2056	2236			
Gas			2086				
Gas Sand			1340	1390			
Gas Sand			1605	1665			
Show of oil			2094				
Water			2166				
Fifty Foot			2617	2637			
Stray Sand			2802	2839			
Gordon Sand			2875	2890			
1st Pay Oil			2879				
Total				2890			

Remarks: None



(Over)

MAR 17 1949