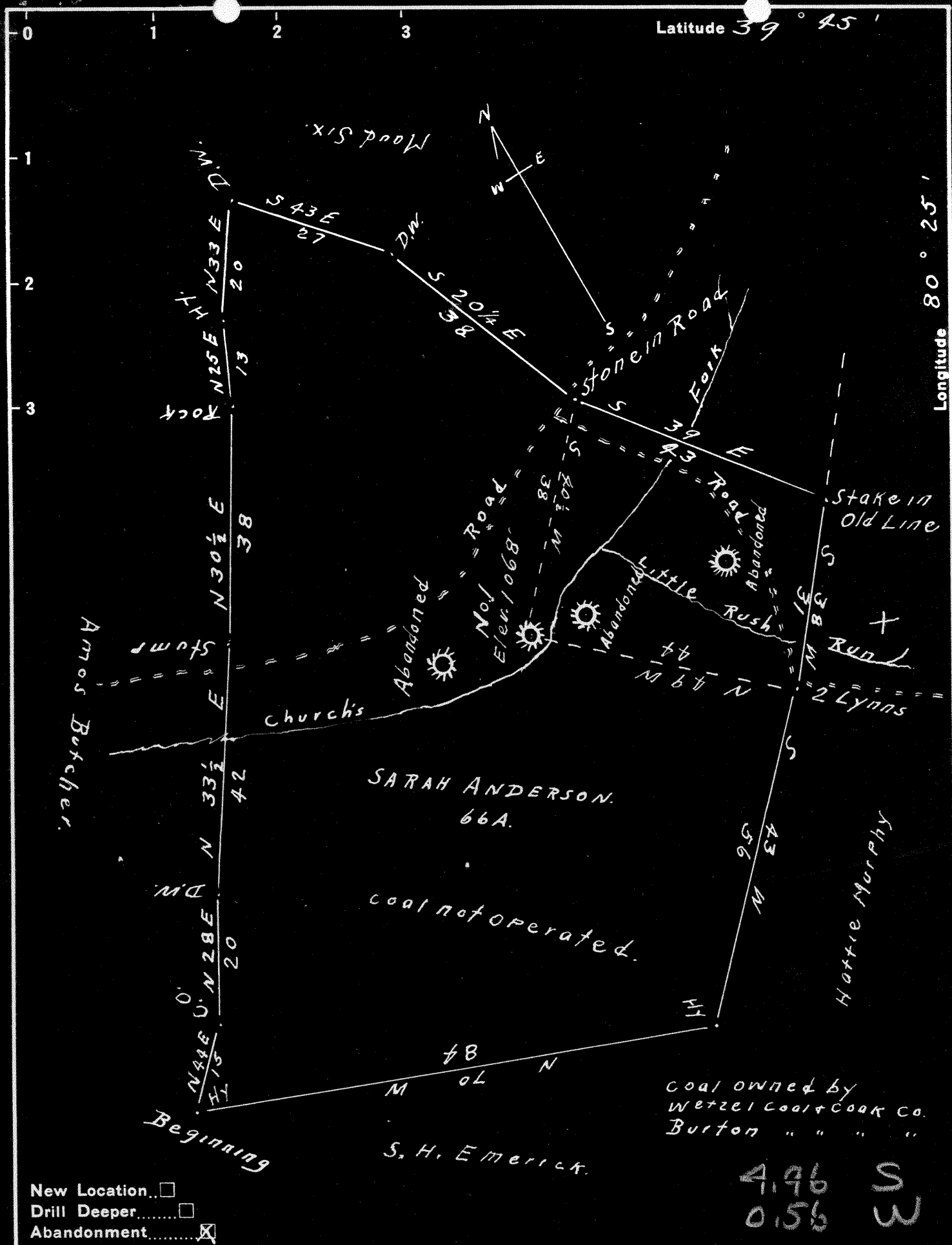


Latitude 39° 45'

Longitude 80° 25'



New Location..   
 Drill Deeper.....   
 Abandonment.....

4.96 S  
 0.56 W

Company SIMON'S PIPE & SUPPLY CO.  
 Address GRANDVILLE, Michigan  
 Farm SARAH ANDERSON  
 Tract One Acres 66 Lease No. NW  
 Well (Farm) No. 1 Serial No. \_\_\_\_\_  
 Elevation (Spirit Level) 1068 Feet  
 Quadrangle Mannington  
 County Wetzel District Church  
 Engineer J. M. Cochran  
 Engineer's Registration No. 60, Surveyor  
 File No. \_\_\_\_\_ Drawing No. \_\_\_\_\_  
 Date Aug 7 1948 Scale 1-inch = 20 Rods.

STATE OF WEST VIRGINIA  
 DEPARTMENT OF MINES  
 OIL AND GAS DIVISION  
 CHARLESTON

**WELL LOCATION MAP**  
 FILE NO. Wet-797-A

+ Denotes location of well on United States Topographic Maps, scale 1 to 62,500, latitude and longitude lines being represented by border lines as shown.  
 - Denotes one inch spaces on border line of original tracing.



30797

Sarah Anderson No. 1 Well (1H)

Church District, Wetzel Co., W. Va.; on Church Fork of  
Fish Creek just below mouth of Little Rush Run 1.8 miles  
east of Hundred; completed \_\_\_\_\_ (before 1919);  
by Curt Fleming; elevation, 1065' B.

Fourth Sand oil well; light.

Church District, Wetzel County, W. Va.

By Philadelphia Gas Co.

Located 1 mile N. 13° E. of Burton, Wetzel County, W. Va.

Drilled in during the month of July, 1904, and after striking the second "pay" in the Fourth Sand, it made 50 bbls. an hour for the first 24 hours, and is yet making 125 bbls. per day (July 22, 1904).

(The names in parentheses are as identified by RVH).

(Doubtful names marked with a "?").

|                                    | Top. | Bottom.    | Thickness. |
|------------------------------------|------|------------|------------|
| Sand and gravel                    | 0    | - 18       | 18         |
| Slate and shells                   | 18   | - 98       | 80         |
| Coal (Jollytown)                   | 98   | - 100      | 2          |
| Slate                              | 100  | - 115      | 15         |
| Lime                               | 115  | - 155      | 40 (30?)   |
| Slate and shells                   | 155  | - 200      | 45         |
| Red rock                           | 200  | - 210      | 10         |
| Slate                              | 210  | - 215      | 5          |
| Lime                               | 215  | - 220      | 5          |
| Slate                              | 220  | - 225      | 5          |
| Red rock                           | 225  | - 240      | 15         |
| Sand (10" casing)                  | 240  | - 270      | 30         |
| Red rock                           | 270  | - 275      | 5          |
| Slate, white                       | 275  | - 285      | 10         |
| Slate, black                       | 285  | - 290      | 5          |
| Lime                               | 290  | - 300      | 10         |
| Slate                              | 300  | - 320      | 20         |
| Lime                               | 320  | - 325      | 5          |
| Slate                              | 325  | - 336      | 11         |
| Black shells                       | 336  | - 350      | 14         |
| Lime                               | 350  | - 355      | 5          |
| Coal (Washington) (a little water) | 355  | - 357      | 2          |
| Slate                              | 357  | - 390      | 33         |
| Lime                               | 390  | - 410      | 20         |
| Sand                               | 410  | - 430      | 20         |
| Slate                              | 430  | - 435      | 5          |
| Lime, dark                         | 435  | - 440      | 5          |
| Lime, white                        | 440  | - 460      | 20         |
| Slate                              | 460  | - 470      | 10 ?       |
| Coal (Waynesburg)                  | 470  | - 485 (15) | 5 ?        |
| Lime                               | 485  | - 514      | 29         |
| Slate                              | 514  | - 520      | 6          |
| Sand (Gilboy)                      | 520  | - 554      | 34         |
| Slate                              | 554  | - 574      | 20         |
| Lime (Great Limestone)             | 574  | - 732      | 158        |
| Coal, Mapletown (Sewickley)        | 732  | - 740      | 8          |
| Lime (Sewickley Limestone)         | 740  | - 793      | 53         |
| Slate                              | 793  | - 798      | 5          |
| Lime                               | 798  | - 825      | 27         |
| Slate                              | 825  | - 834      | 9          |
| Coal, Pittsburgh                   | 834  | - 842      | 8          |
| Lime                               | 842  | - 848      | 6          |
| Slate and shells                   | 848  | - 883      | 35         |
| Red rock                           | 883  | - 888      | 5          |
| Red lime                           | 888  | - 898      | 10         |
| Red rock                           | 898  | - 925      | 27         |
| Lime                               | 925  | - 940      | 15         |

(OVER)

## SARAH ANDERSON NO. 1 WELL (Continued).

|  | Top. | Bottom. | Thickness. |
|--|------|---------|------------|
| Slate  | 940  | - 960   | 20         |
| Red rock                                     | 960  | - 970   | 10         |
| Lime   | 970  | - 988   | 18         |
| Red rock                                     | 988  | - 1005  | 17         |
| Lime   | 1005 | - 1010  | 5          |
| Red rock                                     | 1010 | - 1023  | 13         |
| Lime   | 1023 | - 1045  | 22         |
| Red rock                                     | 1045 | - 1050  | 5          |
| Lime   | 1050 | - 1060  | 10         |
| Slate and shells                             | 1060 | - 1081  | 21         |
| Lime   | 1081 | - 1086  | 5          |
| Slate  | 1086 | - 1140  | 54         |
| Sand (Saltsburg)                             | 1140 | - 1171  | 31         |
| Coal (Bakerstown)                            | 1171 | - 1176  | 5          |
| Slate  | 1176 | - 1228  | 52         |
| Lime (8" casing)                             | 1228 | - 1243  | 15         |
| Sand   | 1243 | - 1265  | 22         |
| Slate  | 1265 | - 1300  | 35         |
| Lime   | 1300 | - 1310  | 10         |
| Sand (Little Dunkard, Buffalo)               | 1310 | - 1347  | 37         |
| Slate  | 1347 | - 1351  | 4          |
| Coal (Mason?)                                | 1351 | - 1354  | 3          |
| Sand (top of Big Dunkard, Mahoning)          | 1354 | - 1392  | 38         |
| Slate  | 1392 | - 1410  | 18         |
| Sand (bottom of Big Dunkard, Mahoning)       | 1410 | - 1440  | 30         |
| Coal (Upper Freeport)                        | 1440 | - 1442  | 2          |
| Lime (Upper Freeport Limestone)              | 1442 | - 1465  | 23         |
| Sand, (Upper Freeport)                       | 1465 | - 1505  | 40         |
| Slate  | 1505 | - 1510  | 5          |
| Lime   | 1510 | - 1525  | 15         |
| Sand (Lower Freeport?)                       | 1525 | - 1575  | 50         |
| Slate  | 1575 | - 1602  | 27         |
| Coal Gum (Upper Kittanning?)                 | 1602 | - 1607  | 5          |
| Lime   | 1607 | - 1623  | 16         |
| Gas Sand (Clarion?) (Lower Freeport)         | 1623 | - 1723  | 100        |
| Slate and shells                             | 1723 | - 1773  | 50         |
| Salt Sand (gas at 1853')                     | 1773 | - 1871  | 98         |
| Slate  | 1871 | - 1916  | 45         |
| Red rock                                     | 1916 | - 1920  | 4          |
| Slate and shells                             | 1920 | - 1941  | 21         |
| Maxton Sand (gas at 1949', 1966', and 1971') | 1941 | - 1983  | 42         |
| Slate  | 1983 | - 1997  | 14         |
| Lime   | 1997 | - 2009  | 12         |
| Slate  | 2009 | - 2013  | 4          |
| Big Lime (6" casing)                         | 2013 | - 2093  | 80         |
| Big Injun Sand (gas at 2167')                | 2093 | - 2325  | 232        |
| Slate and shells                             | 2325 | - 2335  | 10         |
| Lime   | 2335 | - 2345  | 10         |
| Slate and shells                             | 2345 | - 2365  | 20         |
| Lime   | 2365 | - 2445  | 80         |
| Slate  | 2445 | - 2455  | 10         |
| Lime   | 2455 | - 2460  | 5          |
| Slate  | 2460 | - 2465  | 5          |
| Lime   | 2465 | - 2485  | 20 (15?)   |
| Slate and shells                             | 2485 | - 2565  | 80         |

(CONTINUED ON NEXT PAGE)

|  | Top. | Bottom. | Thickness. |
|--|------|---------|------------|
| Lime   | 2565 | - 2580  | 15         |
| Slate and shells   | 2580 | - 2610  | 30         |
| Sand (Berea?)  | 2610 | - 2625  | 15         |
| Lime   | 2625 | - 2665  | 40         |
| Slate  | 2665 | - 2680  | 15         |
| Lime   | 2680 | - 2686  | 6          |
| Slate  | 2686 | - 2723  | 37         |
| Lime   | 2723 | - 2736  | 13         |
| Pink rock  | 2736 | - 2751  | 15         |
| Slate and shells   | 2751 | - 2785  | 34         |
| Gantz Sand   | 2785 | - 2795  | 10         |
| Slate  | 2795 | - 2800  | 5          |
| Sand (top of 50-Ft. Sand)                                | 2800 | - 2809  | 9          |
| Slate  | 2809 | - 2819  | 10         |
| Sand   | 2819 | - 2825  | 6          |
| Slate  | 2825 | - 2830  | 5          |
| Sand (bottom of 50-Ft. Sand)                             | 2830 | - 2851  | 51         |
| Slate  | 2851 | - 2859  | 8          |
| 30-Ft. Sand  | 2859 | - 2894  | 35         |
| Pink sand  | 2894 | - 2897  | 3          |
| Gordon Stray Sand  | 2897 | - 2925  | 28         |
| Slate  | 2925 | - 2929  | 4          |
| Gordon Sand  | 2929 | - 2997  | 68         |
| Slate  | 2997 | - 3022  | 25         |
| Fourth Sand (oil; 1st pay at 3047':<br>2nd pay at 3053') | 3022 | - 3066  | 44         |
| Slate, to bottom   | 3066 | - 3068  | 2          |