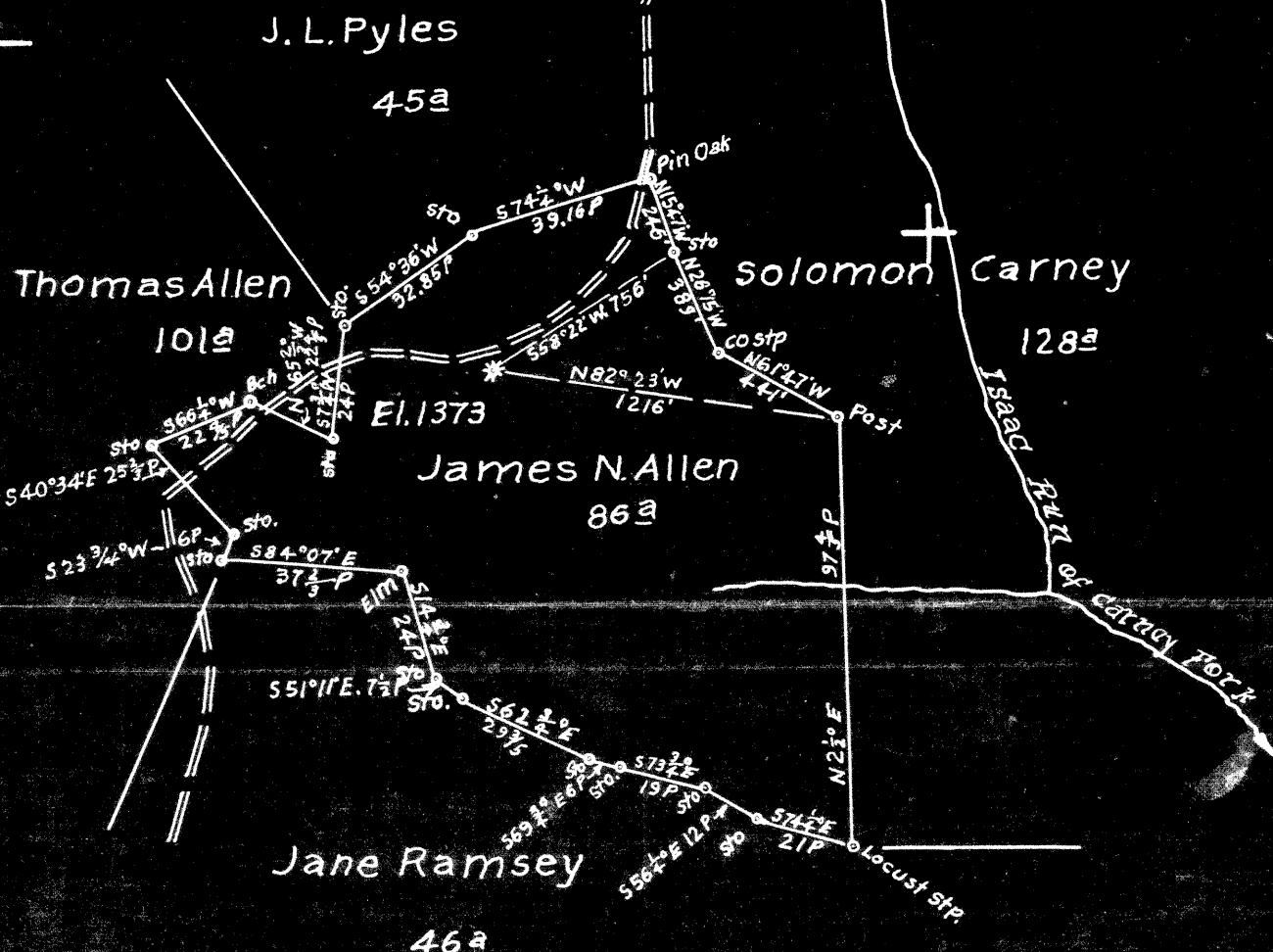


Latitude 39° 45'

Longitude 80° 30'



4.58 S
2.03 W

New Location
 Drill Deeper
 Abandonment

Company Engen & Robinson Oil & Gas
 Address New Martinsville, W.Va.
 Farm James N. Allen
 Tract _____ Acres 86 Lease No. One
 Well (Farm) No. 1 Serial No. _____
 Elevation (Spirit Level) 1373
 Quadrangle Littleton
 County Wetzel District Center
 Engineer George L. McArthur
 Engineer's Registration No. 1187
 File No. _____ Drawing No. _____
 Date July 5, 1949 Scale 1"=40P

STATE OF WEST VIRGINIA
 DEPARTMENT OF MINES
 OIL AND GAS DIVISION
 CHARLESTON

WELL LOCATION MAP
 FILE NO. Wet-818-A

+ Denotes location of well on United States Topographic Maps, scale 1 to 62,500, latitude and longitude lines being represented by border lines as shown.
 - Denotes one inch spaces on border line of original tracing.

(044)

W2T-818-A ~~W-58~~

Grant
.....District, Wetzel County, W. Va.

By Hartman Oil Co.

Near Brink, 3 miles north of Smithfield. *1/4 mi. E of Mabley, on North Fork*

Record revised to "top and bottom" basis.

	Top.	Bottom.
Pittsburgh Coal	610	
Dunkard Sand	1110	- 1175
Gas Sand	1335	- 1455
Salt Sand (water at 1575 and 1600')	1478	- 1648
Pencil Cave	1850	- 1855
Big Lime (Mountain)	1855	- 1905
Big Injun Sand (gas, 1912, 1984, and 2005'; little oil at 2014')	1905	- 2097
Sand	2416	- 2421
Sand, Gantz (?)	2441	- 2451
Stray Sand (Thirty-foot)	2678	- 2698
Gordon Sand (Campbells Run) (gas at 2753')	2728	- 2753

"Here the interval between the Stray and the Gordon Sands of Wetzel and Tyler has thickened to 30 feet, putting the one 2068 feet below the Pittsburgh Coal, and the other (Gordon), 2118 feet below the same coal bed."

Grant District, Wetzel County, W. Va.

By Hartman Oil Co.

Near Brink P. O.

13" casing, 186'; 10", 1118'; 8½", 1556'; 6-5/8", 1883'.

	Top.	Bottom.
Pittsburgh Coal		610
Dunkard Sand	1110	1175
Gas Sand	1335	1455
Salt Sand (water, 1576-1600')	1478	1648
Pencil Cave	1850	1855
Big Lime	1855	1905
Big Injun Sand (gas at 1912, 1984, 2005'; oil, small, at 2014')	1905	2097
Gantz Sand	2416	2421
50-Ft. Sand	2441	2451
Stray Sand	2678	2698
Gordon Sand (gas, 2753')	2728	2753