

- New Location
- Drill Deeper
- Abandonment

Map Sh. 38 NB W 5 RB 940 P 26

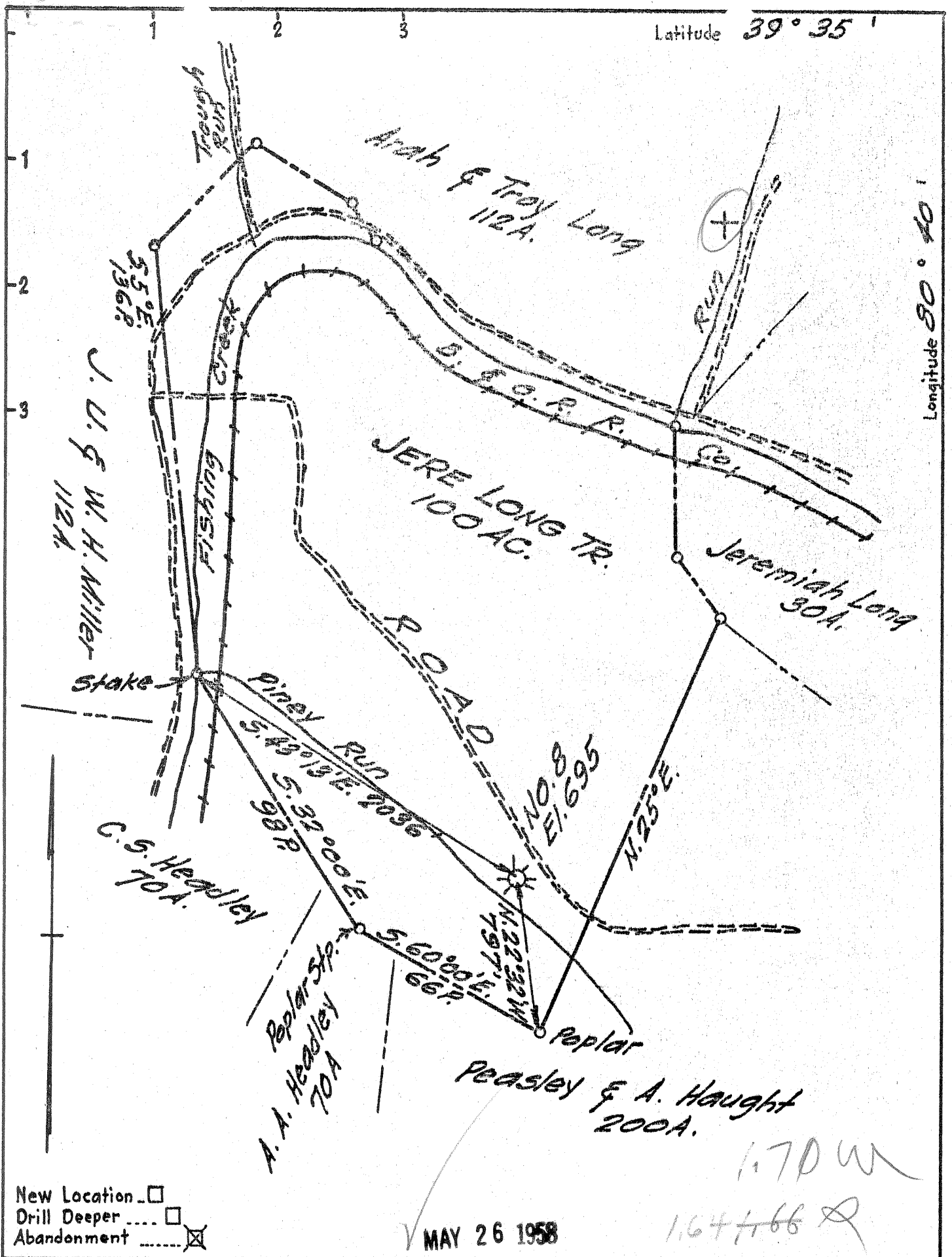
Company Hope Natural Gas Co  
 Address Clarksburg, W.Va.  
 Farm Jere Long  
 Tract \_\_\_\_\_ Acres 100 Lease No. 89  
 Well (Farm) No. \_\_\_\_\_ Serial No. 8  
 Elevation (Spirit Level) 695'  
 Quadrangle Littleton  
 County Wetzel District Green  
 Engineer W.M. Bowers  
 Engineer's Registration No. 900  
 File No. \_\_\_\_\_ Drawing No. \_\_\_\_\_  
 Date 11-1-49 Scale 1" = 40P

STATE OF WEST VIRGINIA  
 DEPARTMENT OF MINES  
 OIL AND GAS DIVISION  
 CHARLESTON

**WELL LOCATION MAP**  
 FILE NO. Wet-835-A

+ Denotes location of well on United States Topographic Maps, scale 1 to 62,500, latitude and longitude lines being represented by border lines as shown.

- Denotes one inch spaces on border line of original tracing.



- New Location
- Drill Deeper
- Abandonment

MAY 26 1958

Company A. M. Snider  
 Address 60 Sunset Dr., Fairmont, W. Va.  
 Farm Jere Long  
 Tract \_\_\_\_\_ Acres 100 Lease No. \_\_\_\_\_  
 Well (Farm) No. \_\_\_\_\_ Serial No. 8  
 Elevation (Spirit Level) 695  
 Quadrangle Littleton  
 County Wetzel District Green  
 Engineer Drain H. Heyman  
 Engineer's Registration No. 1868  
 File No. A. M. S. Drawing No. 1  
 Date Apr. 25 1958 Scale 1" = 40 P.

STATE OF WEST VIRGINIA  
 DEPARTMENT OF MINES  
 OIL AND GAS DIVISION  
 CHARLESTON

WELL LOCATION MAP  
 FILE NO. Wet-168-A

Now 835-A

+ Denotes location of well on United States Topographic Maps, scale 1 to 62,500, latitude and longitude lines being represented by border lines as shown

- Denotes one inch spaces on border line of original tracing.



1001

STATE OF WEST VIRGINIA  
DEPARTMENT OF MINES  
OIL AND GAS DIVISION

Quadrangle Littleton

Permit No. 1051-A

WELL RECORD

Oil or Gas Well Gas  
(KIND)

Company A. M. Snider  
Address Hundred, W. Va.  
Farm Jere Long Acres 100  
Location (waters) Fishing Creek  
Well No. 8 Elev. 695  
District Green County Wetzel  
The surface of tract is owned in fee by C. A. LONG  
Address Pine Grove, W. Va.  
Mineral rights are owned by None  
Address \_\_\_\_\_

Casing and Tubing	Used in Drilling	Left in Well	Packers
Size			Kind of Packer _____
16			
13			
10	200'		Size of <u>6-5/8x3"</u>
8 1/4	975'		
6 3/8	1975'	1975'	Depth set <u>2425'</u>
5 3/16			
3" Rerun	2328'	2158'	Perf. top _____
2	2531'	2531'	Perf. bottom _____
Liners Used			Perf. top _____
			Perf. bottom _____

Drilling commenced June 20, 1898  
Drilling completed August 20, 1898  
Date Shot 1-30-50 From No record To \_\_\_\_\_  
With 20 cts. Glycerin  
Open Flow /10ths Water in \_\_\_\_\_ Inch  
/10ths Merc. in \_\_\_\_\_ Inch  
Volume \_\_\_\_\_ Cu. Ft.  
Rock Pressure \_\_\_\_\_ lbs. \_\_\_\_\_ hrs.  
Oil \_\_\_\_\_ bbls., 1st 24 hrs.  
WELL ACIDIZED \_\_\_\_\_  
WELL FRACTURED \_\_\_\_\_

CASING CEMENTED \_\_\_\_\_ SIZE \_\_\_\_\_ No. Ft. \_\_\_\_\_ Date \_\_\_\_\_

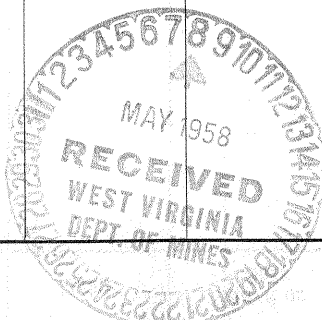
COAL WAS ENCOUNTERED AT \_\_\_\_\_ FEET \_\_\_\_\_ INCHES  
\_\_\_\_\_ FEET \_\_\_\_\_ INCHES \_\_\_\_\_ FEET \_\_\_\_\_ INCHES  
\_\_\_\_\_ FEET \_\_\_\_\_ INCHES \_\_\_\_\_ FEET \_\_\_\_\_ INCHES

RESULT AFTER TREATMENT \_\_\_\_\_

ROCK PRESSURE AFTER TREATMENT \_\_\_\_\_

Fresh Water \_\_\_\_\_ Feet Salt Water \_\_\_\_\_ Feet

Formation	Color	Hard or Soft	Top	Bottom	Oil, Gas or Water	Depth	Remarks
Injun Sand			1700	1925			
Stray Sand			2466		Gas-2467		
Gordon Sand			2470	2499	Oil-2495		
Total Depth				2504			
Drilled deeper				2505			





STATE OF WEST VIRGINIA  
DEPARTMENT OF MINES  
OIL AND GAS DIVISION

1281

835A

WELL RECORD

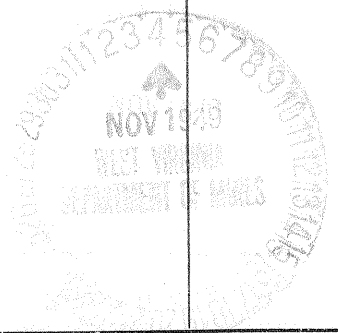
Permit No. \_\_\_\_\_ Oil or Gas Well \_\_\_\_\_ (KIND)

Company Hope Natural Gas Company.  
 Address 445 West Main St., Clarksburg, W. Va.  
 Farm Jerry Long Acres 98  
 Location (waters) \_\_\_\_\_  
 Well No. 8 Elev. 695  
 District Green County Wetzel  
 The surface of tract is owned in fee by \_\_\_\_\_  
 Address \_\_\_\_\_  
 Mineral rights are owned by \_\_\_\_\_  
 Address \_\_\_\_\_  
 Drilling commenced June 20, 1898  
 Drilling completed Aug. 17, 1898  
 Date Shot \_\_\_\_\_ From \_\_\_\_\_ To \_\_\_\_\_  
 With \_\_\_\_\_  
 Open Flow \_\_\_\_\_ /10ths Water in \_\_\_\_\_ Inch  
 \_\_\_\_\_ /10ths Merc. in \_\_\_\_\_ Inch  
 Volume \_\_\_\_\_ Cu. Ft.  
 Rock Pressure \_\_\_\_\_ lbs. \_\_\_\_\_ hrs.  
 Oil \_\_\_\_\_ bbls., 1st 24 hrs.  
 Fresh water none recorded feet \_\_\_\_\_ feet  
 Salt water none recorded feet \_\_\_\_\_ feet

Casing and Tubing	Used in Drilling	Left in Well	Packers
Size			
16			Kind of Packer
13			
10	200	Pulled	Size of
8 3/4	975	Pulled	
6 5/8	1975	1975	Depth set
5 3/16			
3	2504	2504	Perf. top
2			Perf. bottom
Liners Used			Perf. top
			Perf. bottom

NOT  
 CASING CEMENTED \_\_\_\_\_ SIZE \_\_\_\_\_ No. Ft. \_\_\_\_\_ Date \_\_\_\_\_  
 COAL WAS ENCOUNTERED AT 410 FEET 48Est INCHES  
 \_\_\_\_\_ FEET \_\_\_\_\_ INCHES FEET \_\_\_\_\_ INCHES  
 \_\_\_\_\_ FEET \_\_\_\_\_ INCHES FEET \_\_\_\_\_ INCHES

Formation	Color	Hard or Soft	Top	Bottom	Oil, Gas or Water	Depth Found	Remarks
Pittsburgh Coal			410	414Est.			
Big Injun			1700	1925			
Stray sand			2466		gas	2467	
Gordon			2470	2499	oilgas	2495	
Total depth				2504			



Formation	Color	Hard or Soft	Top	Bottom	Oil, Gas or Water	Depth Found	Remarks

Date November 3, 1949., 19

APPROVED Hope Natural Gas Company., Owner

By \_\_\_\_\_

(Title) JAN