

39°30'00"

80°35'00"

Latitude

Longitude

1.37s  
20w

Topo Location

7.5' Loc. \_\_\_\_\_ 15' Loc. \_\_\_\_\_  
(calc.) \_\_\_\_\_

Company Wm. Moses

Farm L.G. ROBINSON #6 55

15' Quad \_\_\_\_\_  
(sec.)

7.5' Quad Folsom

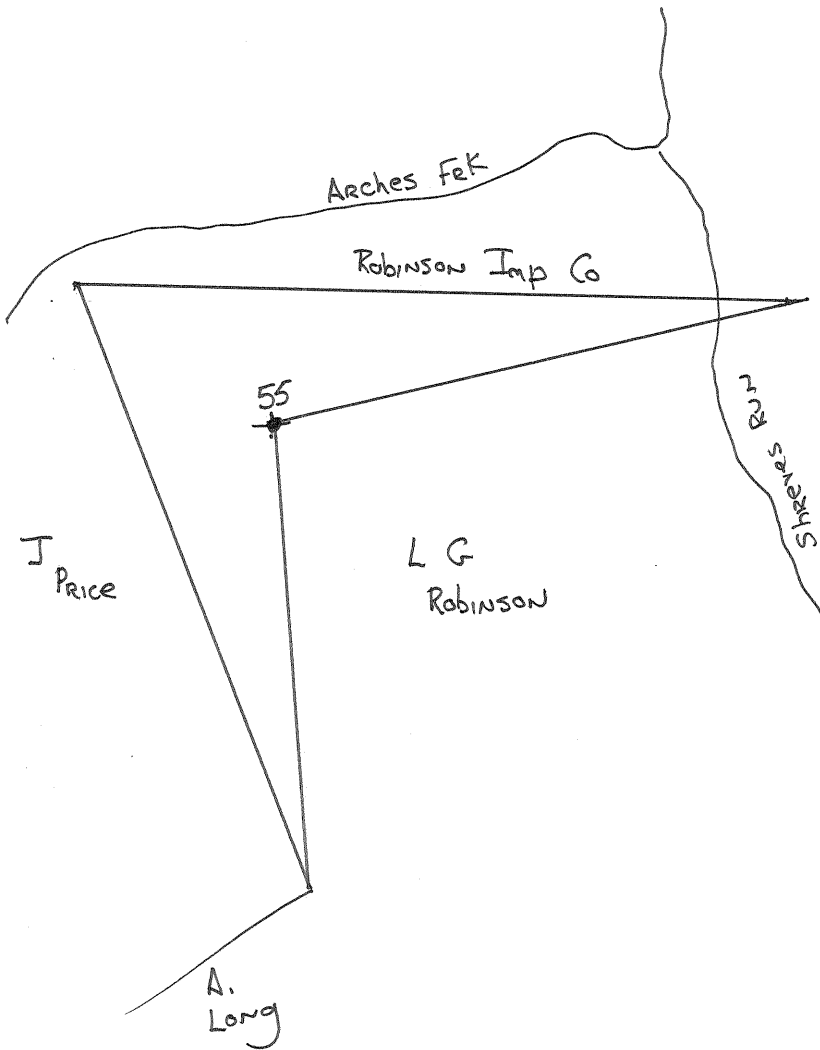
District Grant

WELL LOCATION PLAT

County 103 Permit 30885

30885

GRANT





STATE OF WEST VIRGINIA  
DEPARTMENT OF MINES  
OIL AND GAS DIVISION

WELL RECORD

1355

Permit No. 885A

Oil or Gas Well \_\_\_\_\_ (KIND)

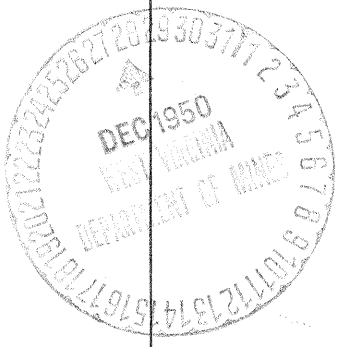
Company Wm. Moses  
 Address Salem, W. Va.  
 Farm L. G. Robinson Acres \_\_\_\_\_  
 Location (waters) \_\_\_\_\_  
 Well No. 55 Elev. \_\_\_\_\_  
 District Grant County Wetzel  
 The surface of tract is owned in fee by \_\_\_\_\_  
 Address \_\_\_\_\_  
 Mineral rights are owned by \_\_\_\_\_  
 Address \_\_\_\_\_  
 Drilling commenced \_\_\_\_\_  
 Drilling completed Nov. 22, 1904  
 Date Shot \_\_\_\_\_ From \_\_\_\_\_ To \_\_\_\_\_  
 With \_\_\_\_\_  
 Open Flow \_\_\_\_\_ /10ths Water in \_\_\_\_\_ Inch  
 \_\_\_\_\_ /10ths Merc. in \_\_\_\_\_ Inch  
 Volume \_\_\_\_\_ Cu. Ft.  
 Rock Pressure \_\_\_\_\_ lbs. \_\_\_\_\_ hrs.  
 Oil \_\_\_\_\_ bbls., 1st 24 hrs.  
 Fresh water \_\_\_\_\_ feet \_\_\_\_\_ feet  
 Salt water \_\_\_\_\_ feet \_\_\_\_\_ feet

Casing and Tubing	Used in Drilling	Left in Well	Packers
Size			Kind of Packer
16			
13			
10			Size of
8 1/4		1413	
6 1/2		2174	Depth set
5 3/16			
3			Perf. top
2			Perf. bottom
Liners Used			Perf. top
			Perf. bottom

CASING CEMENTED \_\_\_\_\_ SIZE \_\_\_\_\_ No. Ft. \_\_\_\_\_ Date \_\_\_\_\_

COAL WAS ENCOUNTERED AT 887 FEET 60 INCHES  
 \_\_\_\_\_ FEET \_\_\_\_\_ INCHES \_\_\_\_\_ FEET \_\_\_\_\_ INCHES  
 \_\_\_\_\_ FEET \_\_\_\_\_ INCHES \_\_\_\_\_ FEET \_\_\_\_\_ INCHES

Formation	Color	Hard or Soft	Top	Bottom	Oil, Gas or Water	Depth Found	Remarks
Pgh Coal			887	902			
Dunkard			1413	1431			
Salt			1710	1750			
Maxon			2079	2087			
Big Lime			2167	2255			
" Injun			2255	2300			
Total Depth				2315			



NOV 26 1951